

- (A) Exit from building is 7'x3' door w/ deadbolt only.
 7" Step down to existing granite 4'x3' landing from door.
 7" Step down from landing to existing granite step. All decking & aggregate surfaces will be at this level. i.e. - from landing, one step down to entire rest of construction.

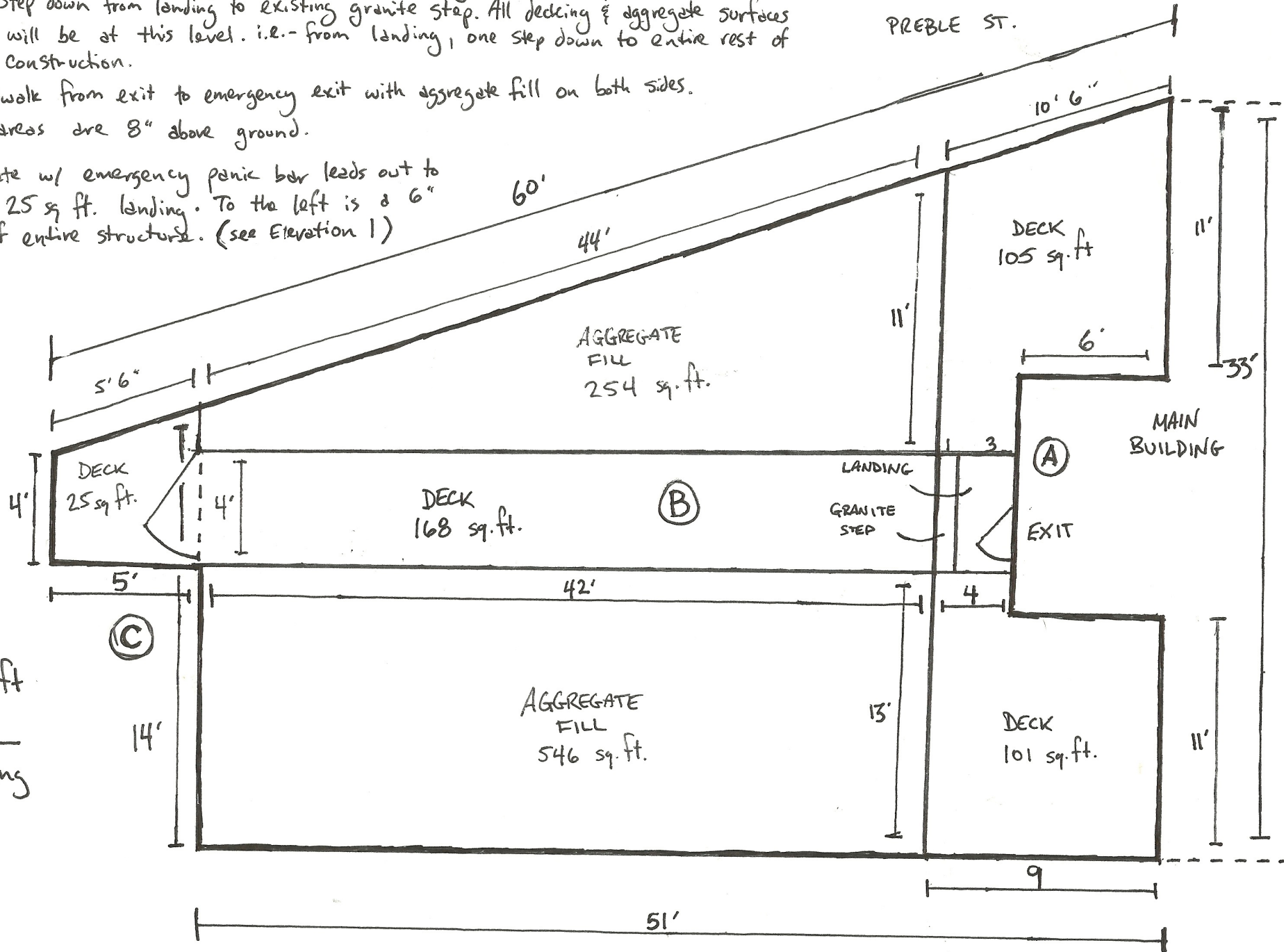
- (B) Boardwalk from exit to emergency exit with aggregate fill on both sides.
 All areas are 8" above ground.

- (C) A gate w/ emergency panic bar leads out to level 25 sq. ft. landing. To the left is a 6" step off entire structure. (see Elevation 1)

KENNEBEC ST.

DIMENSIONS

PREBLE ST.



Total Sq. ft.
 1,199

Total Seating
 Area sq. ft.
 1,006

ALDER ST.