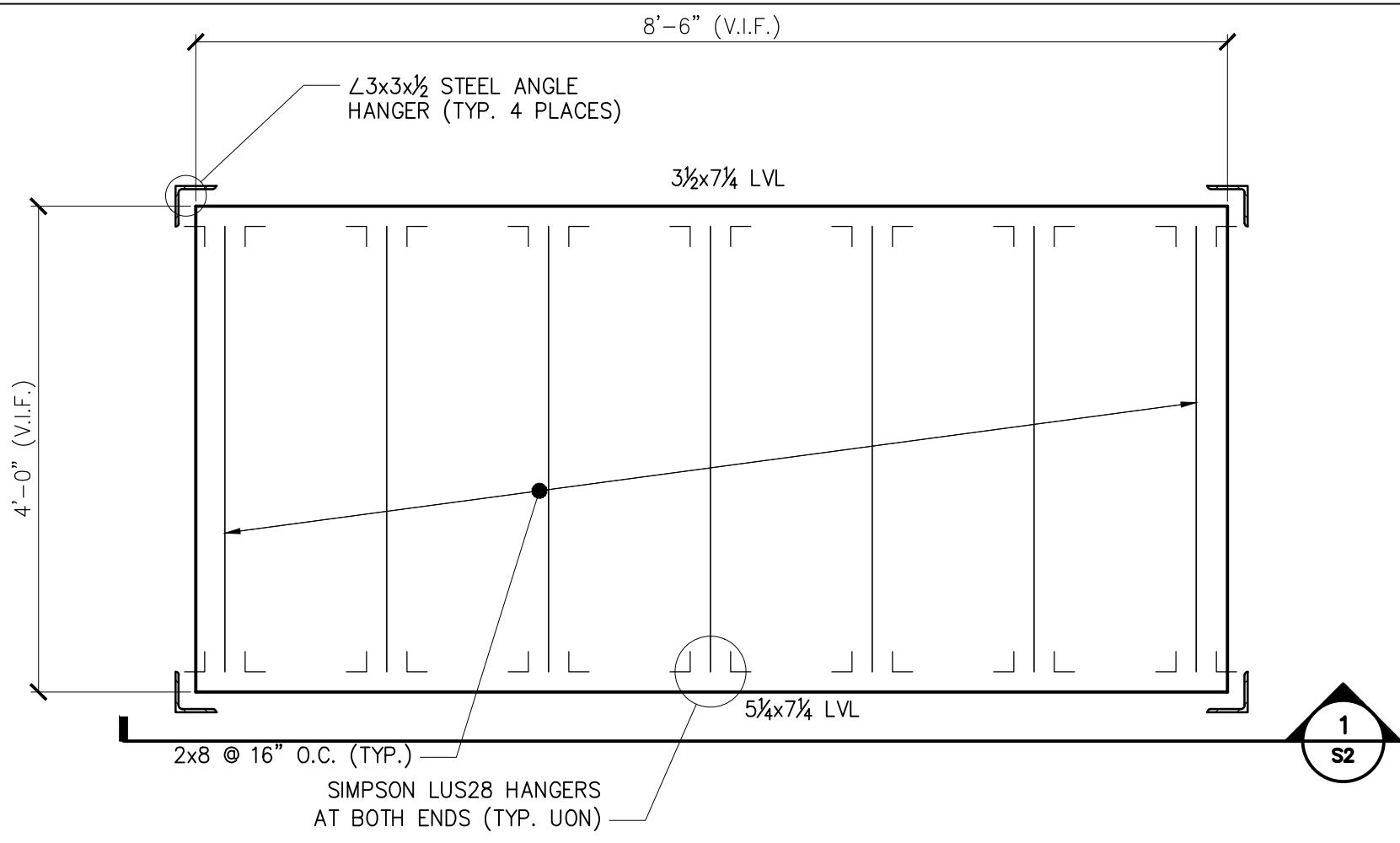
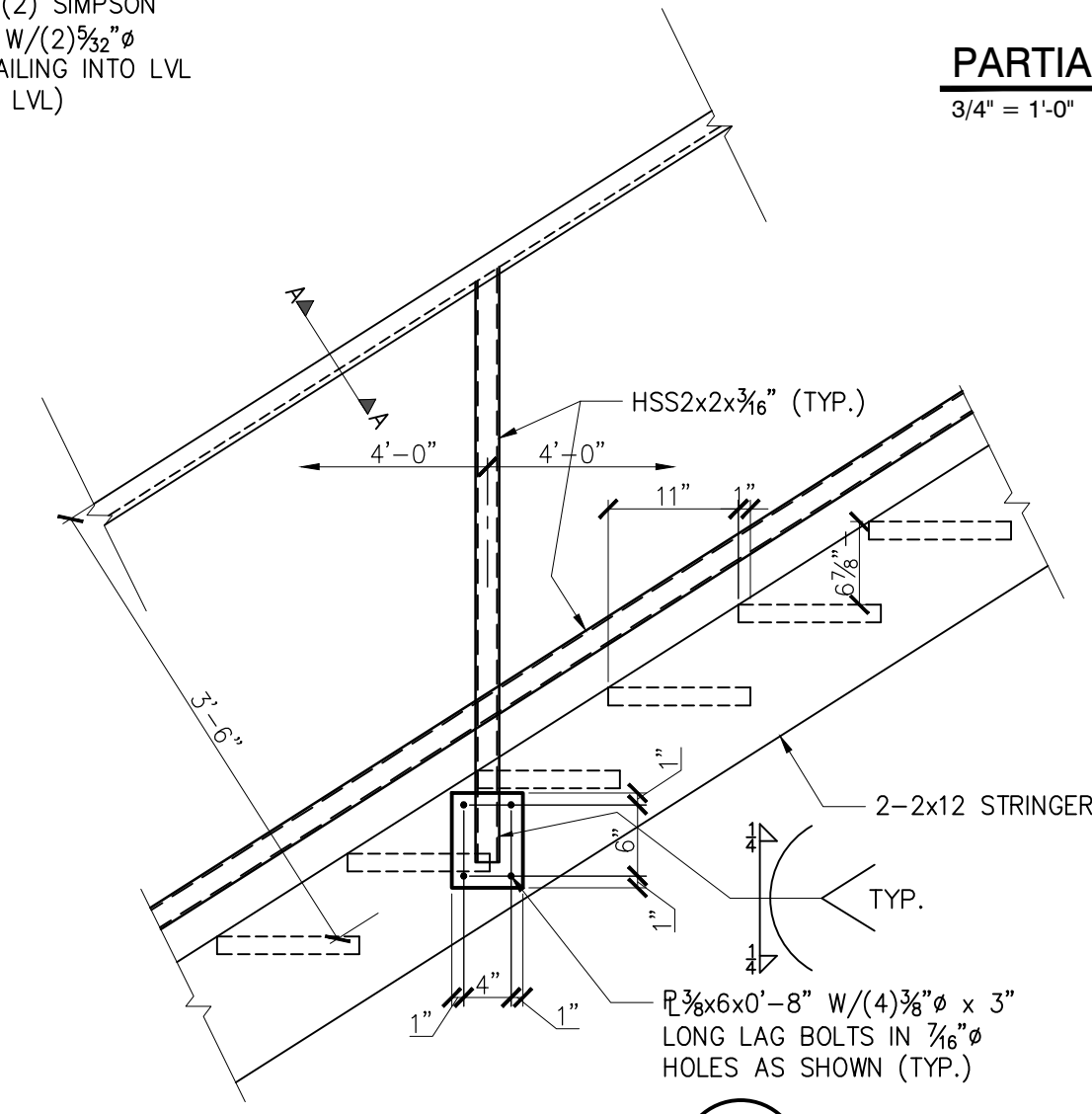


**PARTIAL SECOND FLOOR FRAMING PLAN**  
1/4" = 1'-0"

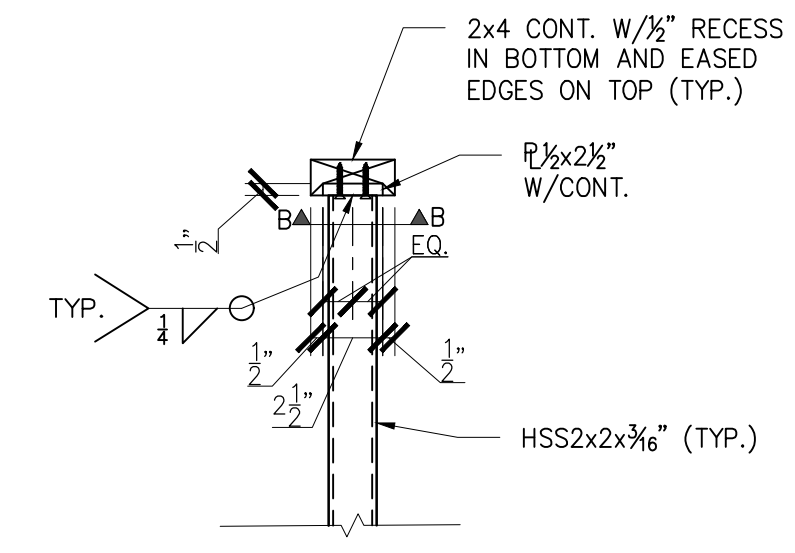
- NOTES:
1. SEE GENERAL NOTES ON DWG S1.
  2. "E" INDICATES: EXISTING CONDITIONS, OR MEMBERS.
  3. "TYP." INDICATES: TYPICAL (ALSO SEE GENERAL NOTE #5).
  4. "V.I.F." INDICATES: O.C. SHALL "VERIFY IN FIELD" EXISTING DIMENSIONS, ELEVATIONS, OR CONDITIONS INDICATED AND REPORT ANY DISCREPANCIES TO THE ENGINEER.
  5. "U.O.N." INDICATES: UNLESS OTHERWISE NOTED.
  6. "S.S." INDICATES: STAINLESS STEEL.
  7. "\*" INDICATES: COORDINATE STAIR AND STAIR LANDING DIMENSIONS AND ELEVATIONS W/ARCHITECTURAL DRAWINGS AND (E) CONDITIONS.



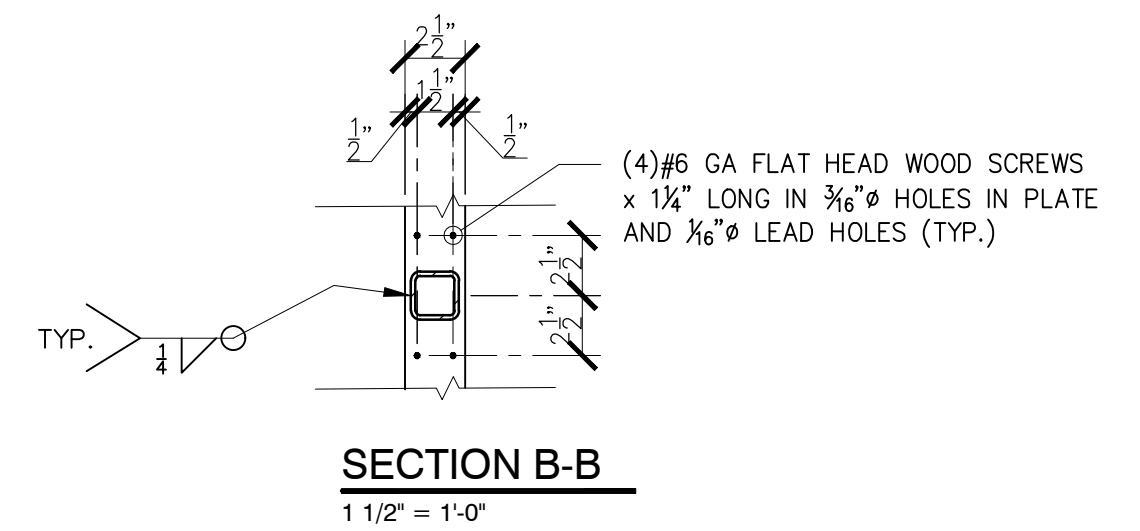
**PARTIAL LANDING FRAMING PLAN**  
3/4" = 1'-0"



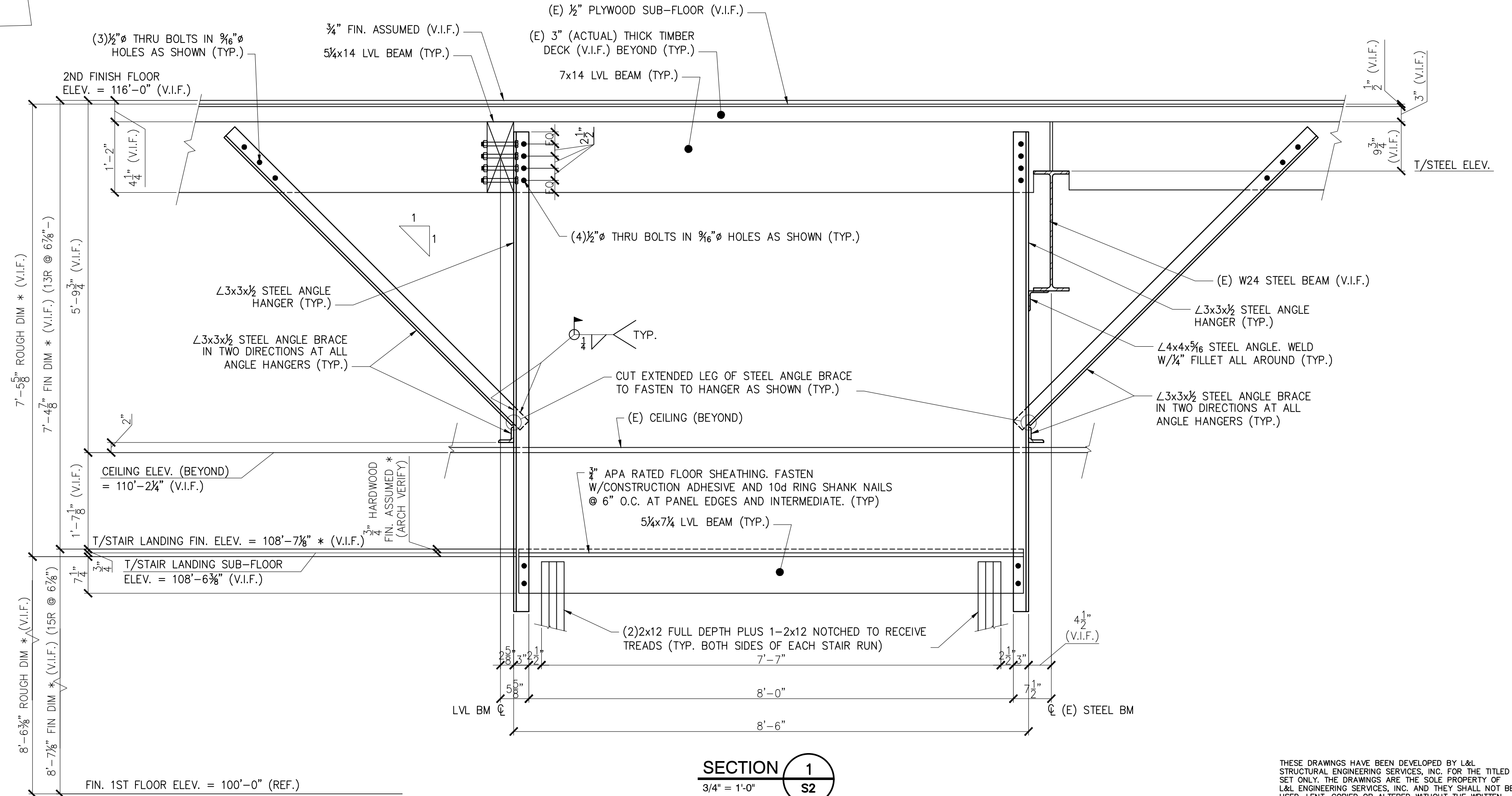
**SECTION 2**  
3/4" = 1'-0"



**SECTION A-A**  
1 1/2" = 1'-0"



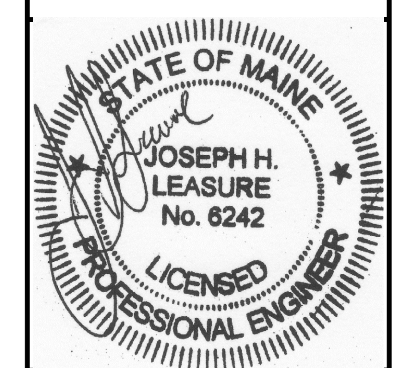
**SECTION B-B**  
1 1/2" = 1'-0"



**SECTION 1**  
3/4" = 1'-0"

**PRELIMINARY  
NOT FOR CONSTRUCTION**

**L & L STRUCTURAL  
ENGINEERING SERVICES, INC.**  
SIX Q. STREET  
SOUTH PORTLAND, MAINE 04106  
PHONE: (207) 767-4830  
FAX: (207) 799-5432  
EMAIL: JLEASURE@L-L-ENG.COM



rev.	date	description	drawn by	checked by	scale	plot date	project #
A	10/05/15	FOR PERMIT & PRICING	JHL	JHL	AS NOTED	10/05/2015	# 2015-???

**AVESTA**  
301 CUMBERLAND AVE  
PORTLAND, ME  
STAIR & LANDING ADDITIONS  
PARTIAL 2ND FLOOR FRAMING PLAN, SECTIONS, & DETAILS



THESE DRAWINGS HAVE BEEN DEVELOPED BY L&L STRUCTURAL ENGINEERING SERVICES, INC. FOR THE TITLED SET ONLY. THE DRAWINGS ARE THE SOLE PROPERTY OF L&L ENGINEERING SERVICES, INC. AND THEY SHALL NOT BE USED, LENT, COPIED OR ALTERED WITHOUT THE WRITTEN CONSENT OF L&L STRUCTURAL ENGINEERING SERVICES, INC.