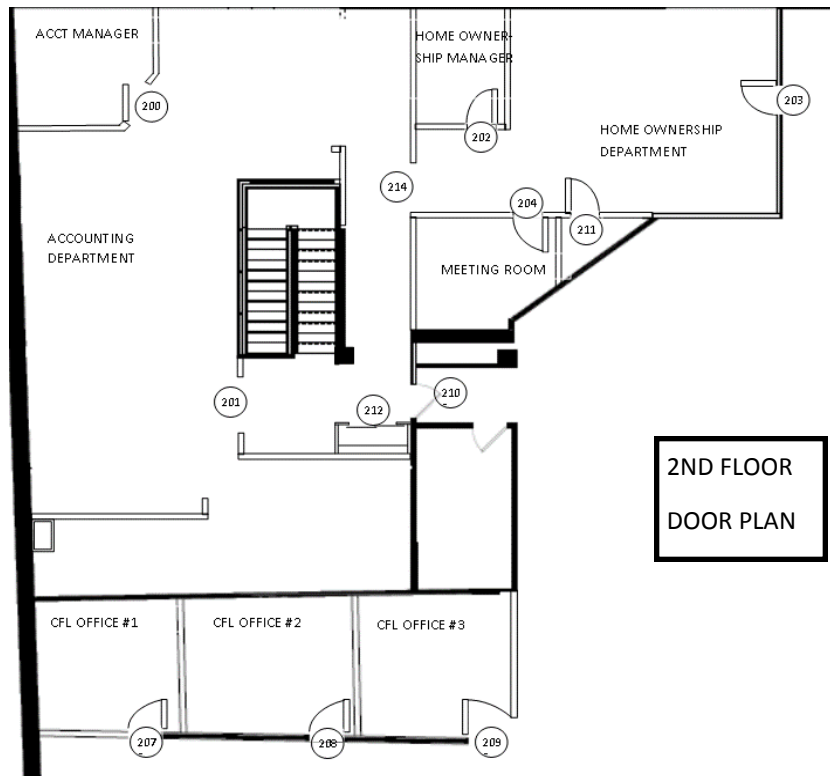


DOOR NO.	LOCATION	SIZE			DOOR TYPE	DOOR MATERIAL	FRAME	FRAME FINISH	LABEL
		WIDTH	HEIGHT	THICKNESS					
200	ACCONT MANAGER	3'-0"	7'-0"	1 3/4"		WOOD/GLASS	HM	PTD	20 MIN
201	ACCOUNTING BARN DOOR	2'-0"	7'-0"	1 3/4"		WOOD	MTL	STAIN	
201A	ACCOUNTING BARN DOOR	2'-0"	7'-0"	1 3/4"		WOOD	MTL	STAIN	
202	HOME MANAGER	3'-0"	7'-0"	1 3/4"		WOOD/GLASS	HM	PTD	20 MIN
203	HOME OWN ENTRANCE	3'-0"	7'-0"	1 3/4"		ALUM/GLASS	ALUM		
204	MEETING ROOM	3'-0"	7'-0"	1 3/4"		WOOD/GLASS	HM	PTD	20 MIN
207	CFL OFFICE #1	3'-0"	7'-0"	1 3/4"		WOOD	WD	PTD	20 MIN
208	CFL OFFICE #2	3'-0"	7'-0"	1 3/4"		WOOD	WD	PTD	20 MIN
209	CFL OFFICE #3	3'-0"	7'-0"	1 3/4"		WOOD	WD	PTD	20 MIN
210	AVESTA 2ND FLR ENTRANCE	3'-0"	7'-0"	1 3/4"		WOOD/GLASS	HM	PTD	20 MIN
211	SUPPLY CLOSET	3'-0"	7'-0"	1 3/4"		WOOD	WD	PTD	20 MIN
212	COAT CLOSET	6'-0"	7'-0"	1 3/4"		WOOD	WD	PTD	20 MIN
214	HOME BARN DOOR	3'-6"	7'-0"	1 3/4"		WOOD	MTL	STAIN	



Prepared For:	Avesta Housing	Architect:	Project:	Revisions:	Date:	Scale: NTS
			307 Cumberland Ave.			
			307 Cumberland Ave. Portland, ME			
DOOR SCHEDULE						
A3.01						