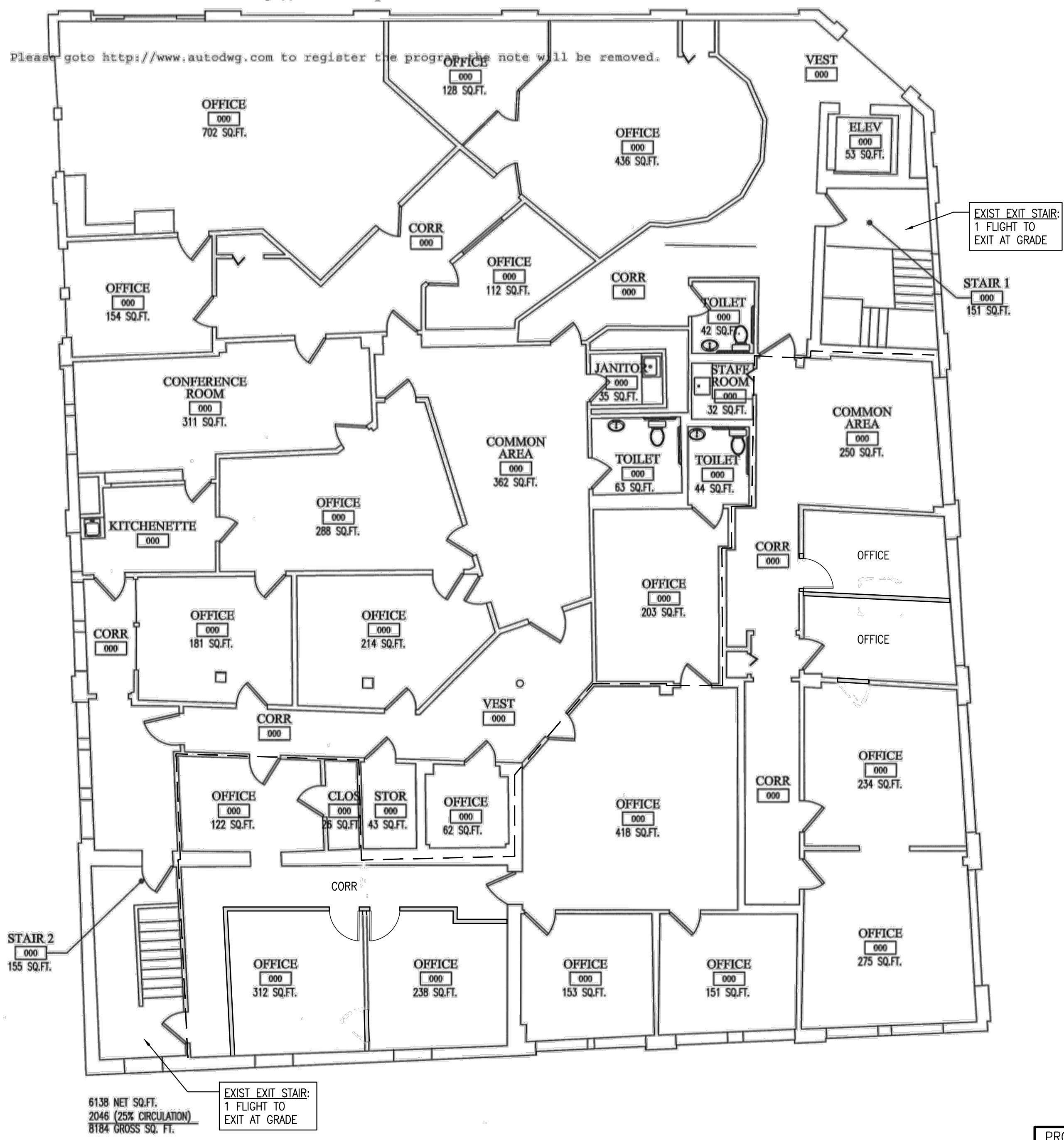


- LIFE SAFETY NOTES
- EXISTING BUILDING IS SPRINKLERED THROUGHOUT.
 - NO CHANGE TO OCCUPANCY CLASS.
 - OCCUPANT LOAD HAS BEEN REDUCED BY TWO (2) PEOPLE.
 - ALTERATIONS ARE TO INTERIOR, NON-FIRE-RATED PARTITIONS ONLY, WITHIN A CONTINUOUS INDIVIDUAL TENANT SPACE.
 - NEW DOOR LOCATIONS ARE WITHIN NON-FIRE-RATED INTERIOR PARTITIONS ONLY.
 - EXIT TRAVEL DISTANCES WILL NOT INCREASE

AutoDWG DWGSee Trial Version. <http://www.autodwg.com>

Please goto <http://www.autodwg.com> to register the program the note will be removed.

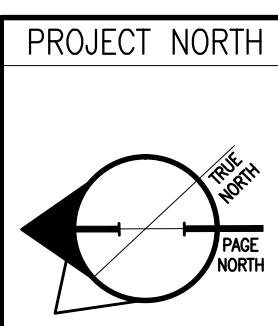


OWNER / DEVELOPER
AVESTA HOUSING
AVESTA HOUSING
307 CUMBERLAND AVENUE
PORTLAND, ME

PROJECT TITLE
**309 CUMBERLAND AVE
INTERIOR ALTERATIONS**
309 CUMBERLAND AVE,
PORTLAND, ME 04101

DRAWING TITLE
**SECOND FLOOR LIFE
SAFETY PLAN**

REVISION DESCRIPTION	DATE



PROJECT NORTH

DRAWING NUMBER
LS1.12

SCALE: AS NOTED
DATE: 9/13/2013

D5 SECOND FLOOR PLAN LIFE SAFETY PLAN
REFERENCED FROM: SCALE: 1/8"=1'-0"