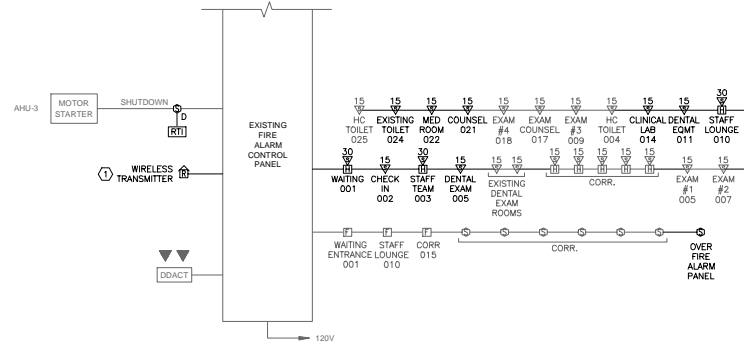


LIGHTING SCHEDULE					
TYPE	DESCRIPTION	MANUFACTURER	LAMPS	MOUNTING	NOTES
A	2' x 4' LED VOLUMETRIC TROFFER. 120V	LITHONIA LIGHTING	34W LED 3500K 3945 LUMENS	CEILING GRID	MODEL #: 2BLT4-40L-ADP-EZ1-LP835 DLC PREMIUM LISTED
B	2' x 2' LED VOLUMETRIC TROFFER. 120V	LITHONIA LIGHTING	39W LED 3500K 4000 LUMENS	CEILING GRID	MODEL #: 2BLT2-40L-ADP-EZ1-LP835 DLC PREMIUM LISTED
C	2' x 2' LED LENSED TROFFER. 120V	LITHONIA LIGHTING	29W LED 3500K 3317 LUMENS	CEILING GRID	MODEL #: 2TL2-33-L-FW-A19-EZ1-LP835
WD	WALL MOUNT DIMMING PASSIVE INFRARED OCCUPANCY SENSOR. 120V	SENSOR SWITCH	N/A	WALL SURFACE	MODEL #: WSX-D-SSA-IV
C	CEILING MOUNTED DUAL TECHNOLOGY ULTRASONIC AND PASSIVE INFRARED OCCUPANCY SENSOR 120V	HUBBELL	N/A	CEILING SURFACE	MODEL #: OMNIDT500 FURNISH RELAYS/POWER PACKS AS REQUIRED FOR A COMPLETE AND OPERABLE INSTALLATION
W	WALL MOUNT PASSIVE INFRARED OCCUPANCY SENSOR 120V	HUBBELL	N/A	WALL SURFACE	MODEL #: LHIRS11
	EMERGENCY BATTERY UNIT 120V	DUAL-LITE	2W LED	WALL SURFACE	MODEL #: EV40-02L
WR	WEATHER PROOF REMOTE HEAD, WHITE FINISH. 120V	DUAL-LITE	(2) 1W LED	WALL SURFACE	MODEL #: EVO-D-W
	LED EXIT SIGN EMERGENCY BATTERY UNIT COMBINATION WITH REMOTE CAPACITY 120V	DUAL-LITE	(2) 1W LED	CEILING SURFACE	MODEL #: EVCU-R-W-D4
	LED EXIT SIGN EMERGENCY BATTERY UNIT 120V	DUAL-LITE	2W LED	CEILING SURFACE	MODEL #: EVEU-R-W

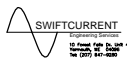
1 LIGHTING SCHEDULE
SCALE: NOT TO SCALE



1 FIRE ALARM RISER DIAGRAM
SCALE: NOT TO SCALE

NOTES:
1. SEE ED.0 FOR LEGEND, ABBREVIATIONS AND GENERAL NOTES.

KEYED NOTES:
① CITY OF PORTLAND REQUIRES INSTALLATION OF NEW RADIO-BASED TELEMETRY WHEN ALTERATIONS/UPGRADES ARE MADE TO FIRE ALARM PANELS.



Greater Portland Health
63 Preble Street Renovation
Portland, Maine

REV	DESCRIPTION	DATE

SEAL
PROJECT NUMBER: 201706
DATE: 02/02/2017
ELECTRICAL LIGHTING SCHEDULE & FIRE ALARM RISER DIAGRAM

E2.1
Unnamed