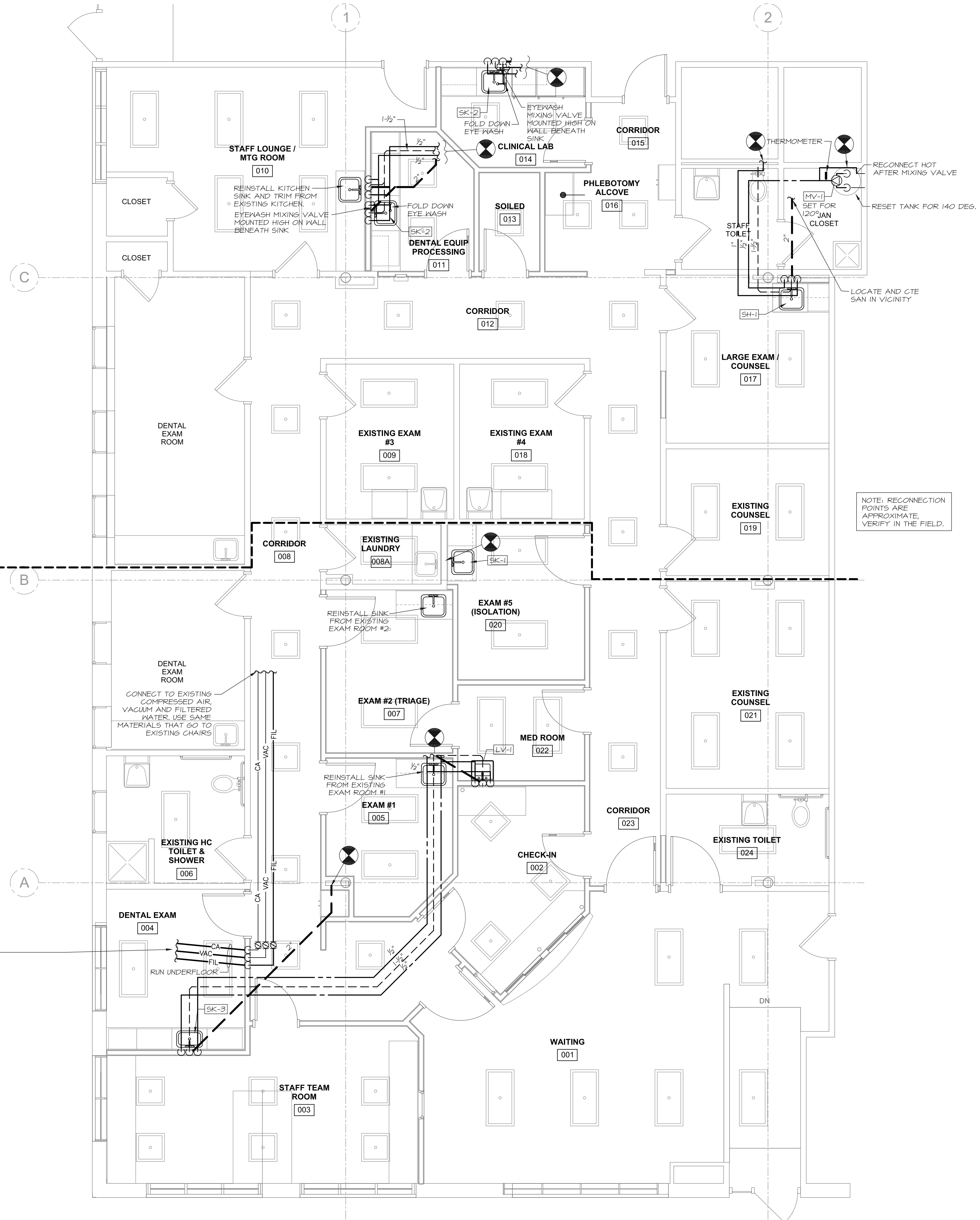


July 25, 2017 - 12:45 pm
X:\Projects\702_63_Prebler\Drawings\1702-P1.dwg

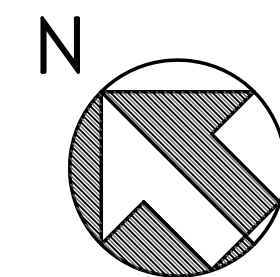
PHASE 2

PHASE 1

Note: Run the following utilities under the floor to the toe of the patient chair:
Cold Water: Run 1/2" and terminate with a 1/2" angle stop X 3/8" compression.
Compressed Air: Run 1/2" and terminate with a 1/2" angle stop X 3/8" compression.
Vacuum: Run minimum 1" line from the patient chair. At that point install a reduction bushing and convert to 1/2" copper. Terminate with 3" AFI with a cap. No angle stop or valve needed. Upon installation the equipment supplier will remove the cap & slide tubing from the equipment over the copper pipe. The hoses and valve on the equipment act as the valve. Coordinate space with Electric.



NOTE: RECONNECTION POINTS ARE APPROXIMATE. VERIFY IN THE FIELD.



Morris Switzer ENVIRONMENTS FOR HEALTH ARCHITECTURE
183 Middle Street, Portland, ME 04101
888.791.8444 207.773.8841
BOSTON | DALLAS | NEW YORK | BURLINGTON | PORTLAND
©2017 Environments For Health e4harchitecture.com

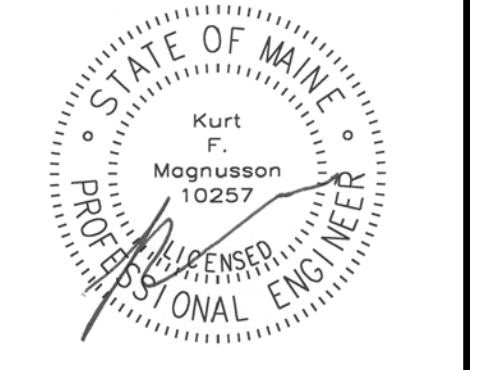


MECHANICAL SYSTEMS ENGINEERS
ROYAL BANK CENTER, UNIT 118
10 FOREST FALLS DRIVE, YARMOUTH, MAINE 04066
207.866.4411
FACEBOOK: MECHANICAL SYSTEMS ENGINEERS
© COPYRIGHT 2017
Project 1702

**Greater Portland Health
63 Preble Street Renovation**
Portland, Maine

REV	DESCRIPTION	DATE

ISSUED FOR CONSTRUCTION 07-26-2017



SEAL:
PROJECT NUMBER: 201708
DATE: 07/24/2017
SHEET TITLE AND NUMBER:

P1

Plumbing Plan
New Work