

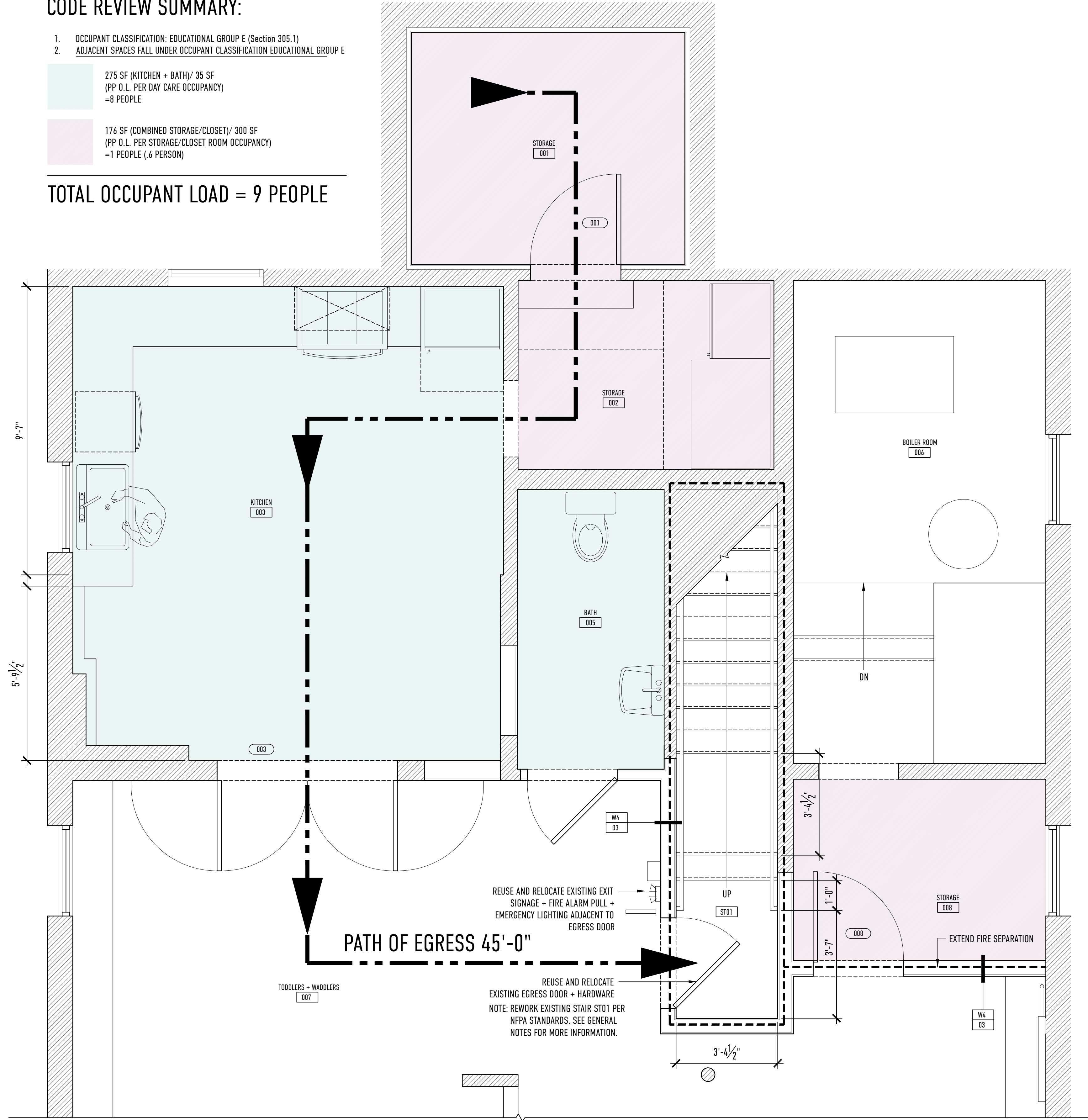
CODE REVIEW SUMMARY:

1. OCCUPANT CLASSIFICATION: EDUCATIONAL GROUP E (Section 305.1)
2. ADJACENT SPACES FALL UNDER OCCUPANT CLASSIFICATION EDUCATIONAL GROUP E

275 SF (KITCHEN + BATH)/ 35 SF
(PP O.L. PER DAY CARE OCCUPANCY)
=8 PEOPLE

176 SF (COMBINED STORAGE/CLOSET)/ 300 SF
(PP O.L. PER STORAGE/CLOSET ROOM OCCUPANCY)
=1 PEOPLE (6 PERSON)

TOTAL OCCUPANT LOAD = 9 PEOPLE



1 LIFE SAFETY PLAN
SCALE: 1/2" = 1'-0"

REVISIONS:

DRAWING TITLE:
A.001 LIFE SAFETY PLAN

PROJECT NAME:
YOUTH & FAMILY OUTREACH

331 CUMBERLAND AVENUE
PORTLAND, MAINE 04101

DATE OF ISSUE:
JANUARY 9, 2018

ISSUED FOR:
PERMIT DOCUMENTS

SCALE:
1/2" = 1'-0"

THIS DRAWING IS THE PROPERTY OF BARRETT MADE AND IS NOT TO BE COPIED OR REPRODUCED IN ANY MANNER WITHOUT THE WRITTEN CONSENT OF BARRETT MADE.

**BARRETT
MADE**

HOUSES · SPACES · DETAILS