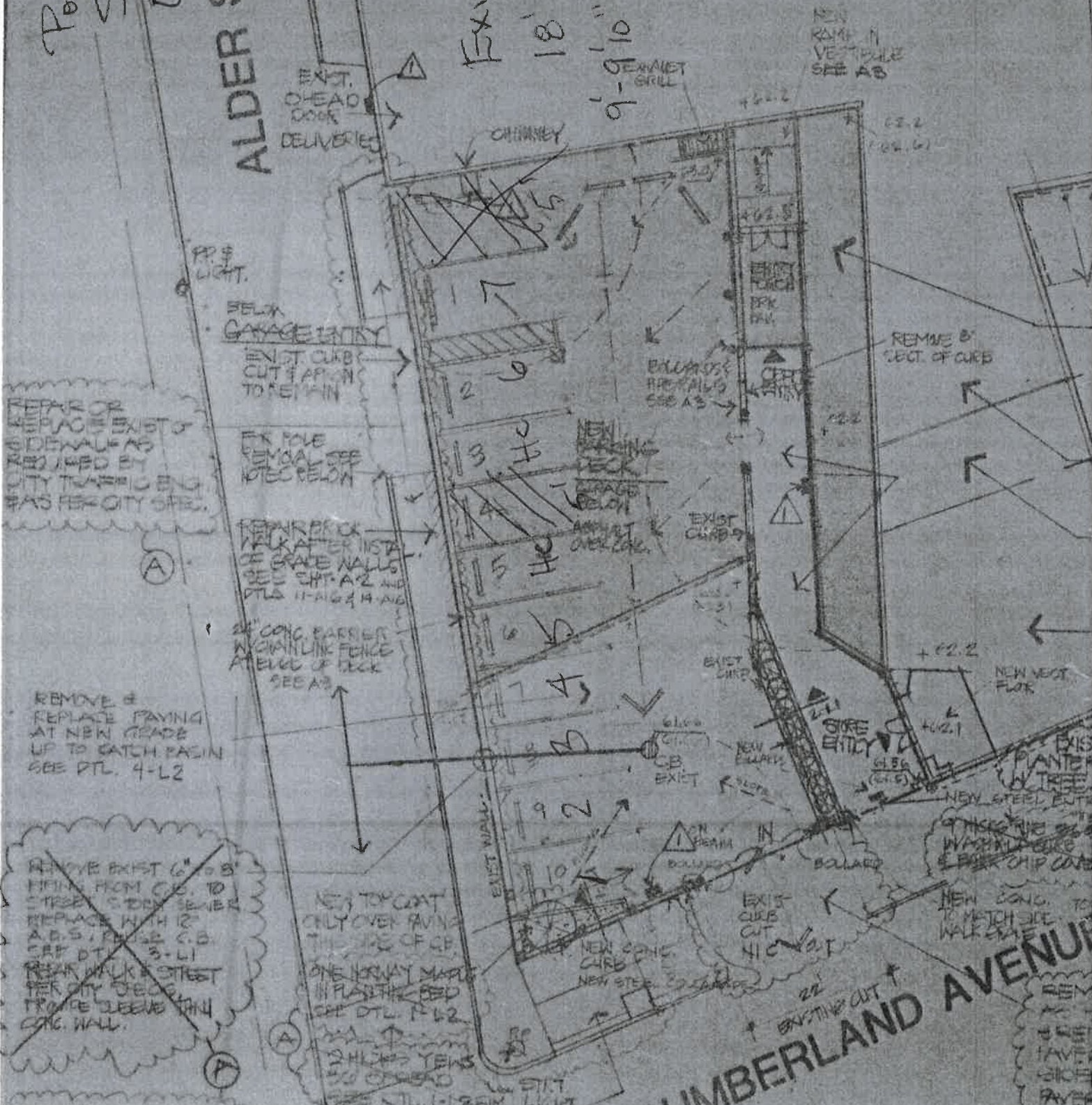


Portland Public Schools - ~~Estimate~~
 Office - ~~Estimate~~
ALDER STREET
 353 Cumberland Avenue

PROCESSING
 1ST LEVEL FFE 51.25
 2ND LEVEL FFE 38.25

Existing Parking
 18' depth
 9'-0" width



REMOVE OR REPLACE EXIST. SIDEWALK AS REQUIRED BY CITY TRAFFIC ENG. WAS PER CITY SPEC.

REMOVE 8' SECT. OF CURB
 REPLACE PAVING AT NEW GRADE UP TO CATCH BASIN SEE DTL. 4-L2

REMOVE EXIST. 6" x 8" FINISH FROM C.B. TO STREET SIDE NEVER REPLACE WITH 12" A.B.S. REUSE C.B. SEE DTL. 3-L1
 REPAIR WALKWAY STREET PER CITY SPEC. FROM CURB TO CONC. WALL.

NEW TOP COAT ONLY OVER PAVING THE SIDE OF CURB ONE ROW WAY MARK IN PLANTING BED SEE DTL. 1-L2

NEW CONC. TO MATCH SIDE WALKWAY

CUMBERLAND AVENUE