

Portland Public
Schools - District
Office

353 Cumberland
Avenue

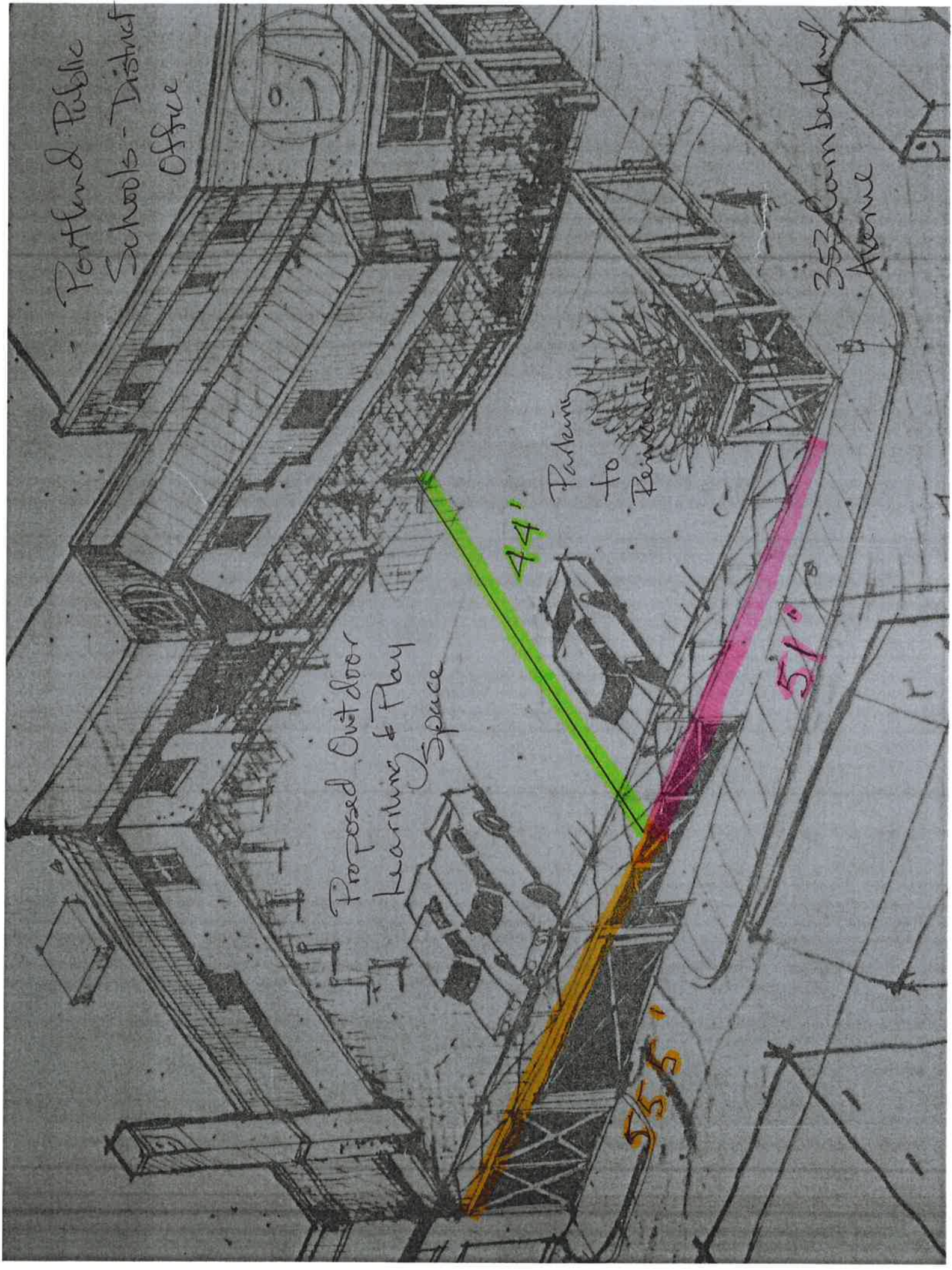
Proposed Outdoor
Learning & Play
Space

Parking
to
Reinstate

44'

51'

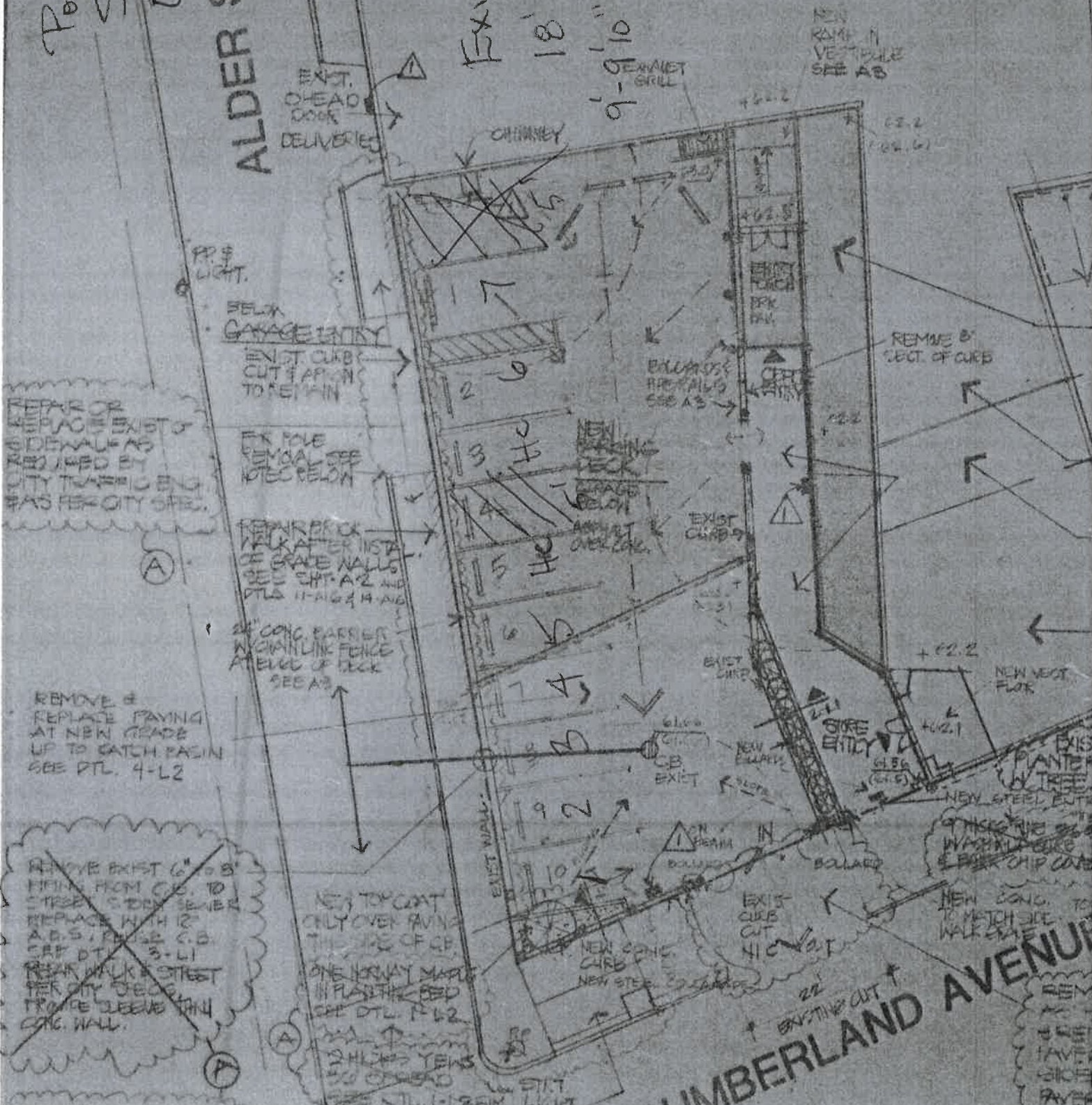
55.5'



Portland Public Schools - ~~Estimate~~
 Office - ~~Estimate~~
ALDER STREET
 353 Cumberland Avenue

PROCESSING
 1ST LEVEL FFE 51.25
 2ND LEVEL FFE 38.25

Existing Parking
 18' depth
 9'-0" width



REMOVE OR REPLACE EXIST. SIDEWALK AS REQUIRED BY CITY TRAFFIC ENG. WAS PER CITY SPEC.

REMOVE EXIST. WALKWAY INST. OF GRAVE WALLS. SEE SHT. A-2 AND DTL. 11-AUG-14-ANG.

REMOVE & REPLACE PAVING AT NEW GRADE UP TO CATCH BASIN. SEE DTL. 4-L2.

REMOVE EXIST. 6" x 8" FINISH FROM C.B. TO STREET. SIDEWALK. REPLACE WITH 12" A.B.S. REUSE C.B. SEE DTL. 3-L1. REPAIR WALKWAY STREET PER CITY SPEC. FROM CURB TO CONC. WALL.

NEW TOP COAT ONLY OVER PAVING THE SIDE OF C.B. ONE ROW WAY MARK IN PLANTING BED. SEE DTL. 1-L2.

REMOVE EXIST. 6" x 8" FINISH FROM C.B. TO STREET. SIDEWALK. REPLACE WITH 12" A.B.S. REUSE C.B. SEE DTL. 3-L1. REPAIR WALKWAY STREET PER CITY SPEC. FROM CURB TO CONC. WALL.

REMOVE EXIST. 6" x 8" FINISH FROM C.B. TO STREET. SIDEWALK. REPLACE WITH 12" A.B.S. REUSE C.B. SEE DTL. 3-L1. REPAIR WALKWAY STREET PER CITY SPEC. FROM CURB TO CONC. WALL.