



PDT ARCHITECTS
 48 DARTMOUTH STREET
 PORTLAND, MAINE 04101
 207-775-1059
 www.pdtarch.com

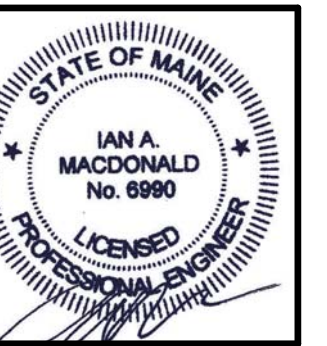


Allied Engineering
 Structural Mechanical Electrical Commissioning
 160 Veranda Street
 Portland, Maine 04103
 P: 207.221.2266
 F: 207.221.2268
 Web: www.allied-eng.com

ALLIED PROJECT No.:
 14009
 CAD FILE:
 14009M.rvt

COPYRIGHT 2014
 PDT Architects
 Reuse or reproduction of the
 contents of this document is not
 permitted without written
 permission of PDT Architects.

Portland Public Schools' Downtown Project
353 Cumberland Avenue, Portland, ME 04101



PDT JOB NO.
 14018

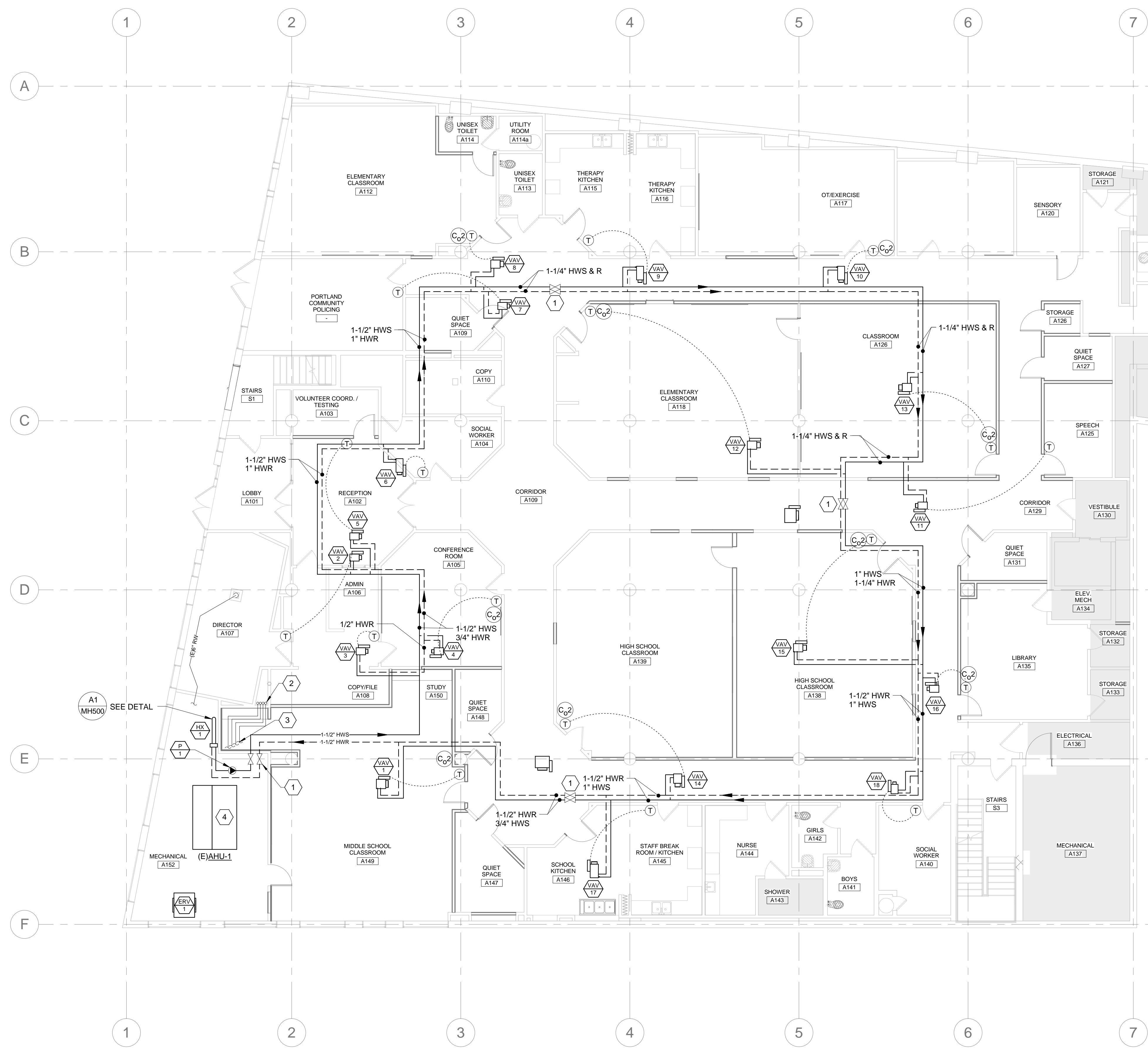
DRWN. CHK
 Checker

SCALE:
 AS NOTED

ISSUE:
 BID DOCUMENTS
 MARCH 12, 2014

TITLE
 MECHANICAL
 PIPING PLAN -
 FIRST FLOOR

SHEET
MP100



- KEYED NOTES:**
- 1 MAINTENANCE SHUT-OFF VALVES.
 - 2 REFRIGERANT PIPES UP. PROVIDE FIRE STOPPING. (SEE SPEC. 232300)
 - 3 REFRIGERANT PIPES TO NEW DX COIL IN (E) AHU-1.
 - 4 PROVIDE NEW DX COIL. SEE 238216.

3/17/2014 9:23:37 AM N:\Projects\2014\14009 - Portland Public Schools - Downtown Project\00 Drawing Files Revit 2014\14009M.rvt

A1 MECHANICAL PLAN - FIRST FLOOR
 1/8" = 1'-0"