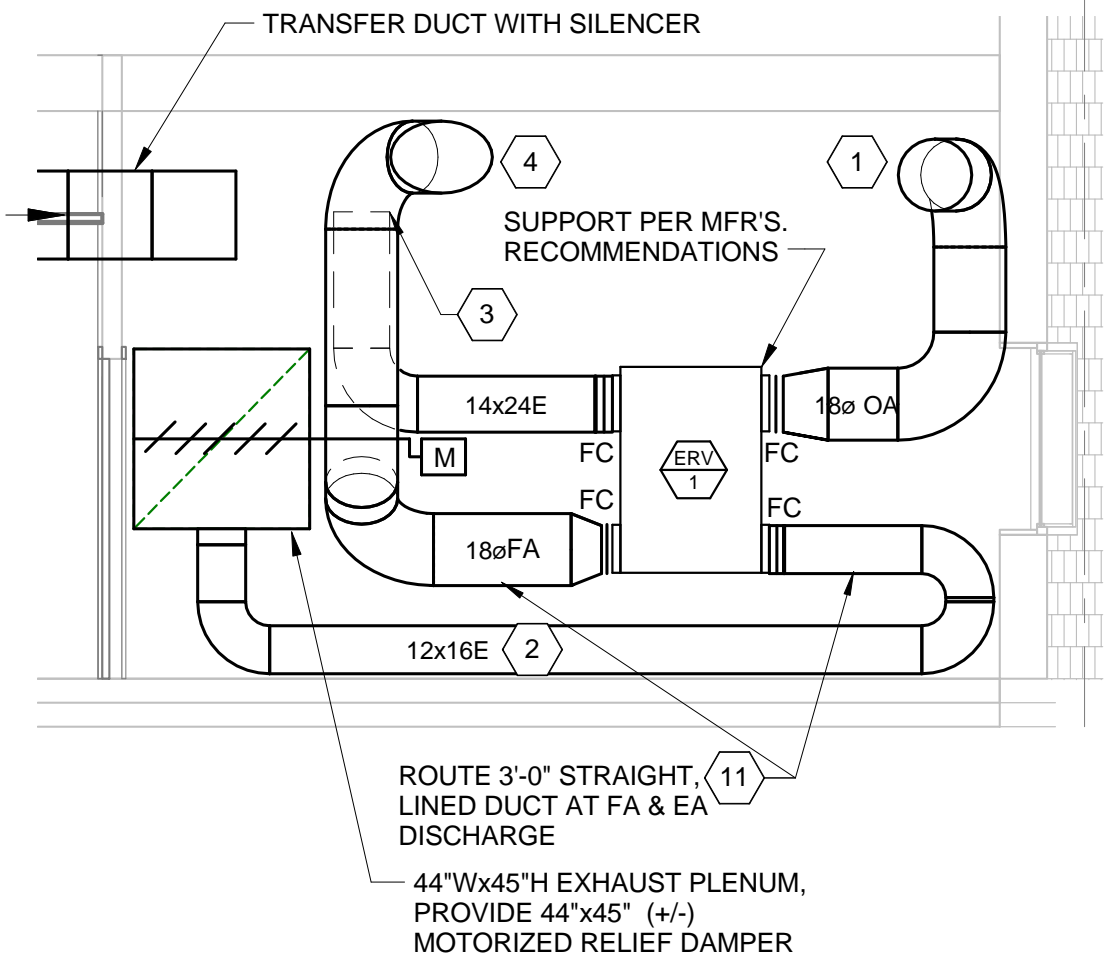


- KEYED NOTES:**
- 18" OUTSIDE AIR (OA) DUCT HIGH ALONG WALL, CONNECT TO EXISTING OA RISER.
 - 24x14 LINED EXHAUST DUCT BELOW ERU, TO BOTTOM OF RELIEF PLENUM.
 - 24x14 OPEN-ENDED LINED RETURN DUCT UP 4'-0" (SOUND ELBOW)
 - 18" FRESH AIR (FA) DUCT ACROSS AND OVER, DROP DOWN AND AIM TO EXISTING AHU RETURN OPENING. BOTTOM OF DUCT AT 7'-0" ABOVE FINISHED FLOOR, MINIMUM.
 - EXISTING BATHROOM EXHAUST FAN TO REMAIN.
 - CAP DRYER EXHAUST DUCT.
 - SHIFT EXISTING DUCT IF REQUIRED TO AVOID WALL TO DECK.
 - RELOCATE EXISTING BATHROOM EXHAUST FAN. RE-CONNECT AND RESTORE TO WORKING CONDITION.
 - TRANSFER DUCT WITH SMOKE DAMPER, SIZE AS INDICATED.
 - TRANSFER DUCT WITHOUT SMOKE DAMPER, SIZE AS INDICATED.
 - REPLACE EXISTING AHU MOTOR AND DRIVE, SEE SPECIFICATION SECTION 230500.
 - PROVIDE A 3'-0" DUCT SILENCER IN EXISTING AIR TRANSFER OPENING. SEE SECTION 233113 FOR SPEC.
 - PROVIDE NEW RANGE HOOD, SEE SECTION 233813.
 - 14



3/17/2014 9:23:00 AM N:\Projects\2014\1414009 - Portland Public Schools - Downtown Project\00 Drawing Files Revit 2014\1414009M.rvt

A1 DETAIL - SECTION AT ERV
 1/4" = 1'-0" ALT. #6 SEE SPEC. 012300

A3 MECHANICAL PLAN - FIRST FLOOR
 1/8" = 1'-0"

