

3/17/2014 9:11:17 AM N:\Projects\2014\14009 - Portland Public Schools - Downtown Project\00 Drawing Files Revit 2014\14009E.rvt



48 DARTMOUTH STREET
PORTLAND, MAINE 04101
207-775-1059
www.pdtarch.com

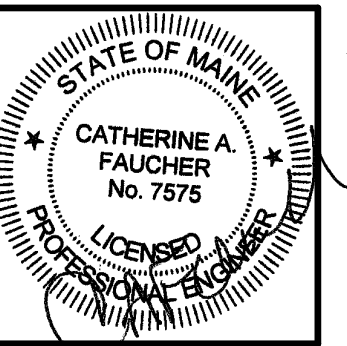


160 Veranda Street
Portland, Maine 04103
Tel: 207.221.2266
Fax: 207.221.2266
Web: www.allied-eng.com

ALLIED PROJECT No.:
14009
CAD FILE:

COPYRIGHT 2014
PDT Architects
Reuse or reproduction of the
contents of this document is not
permitted without written
permission of PDT Architects.

Portland Public Schools' Downtown Project
353 Cumberland Avenue, Portland, ME 04101



PDT JOB NO.
14018

DRWN. CHK
Checker

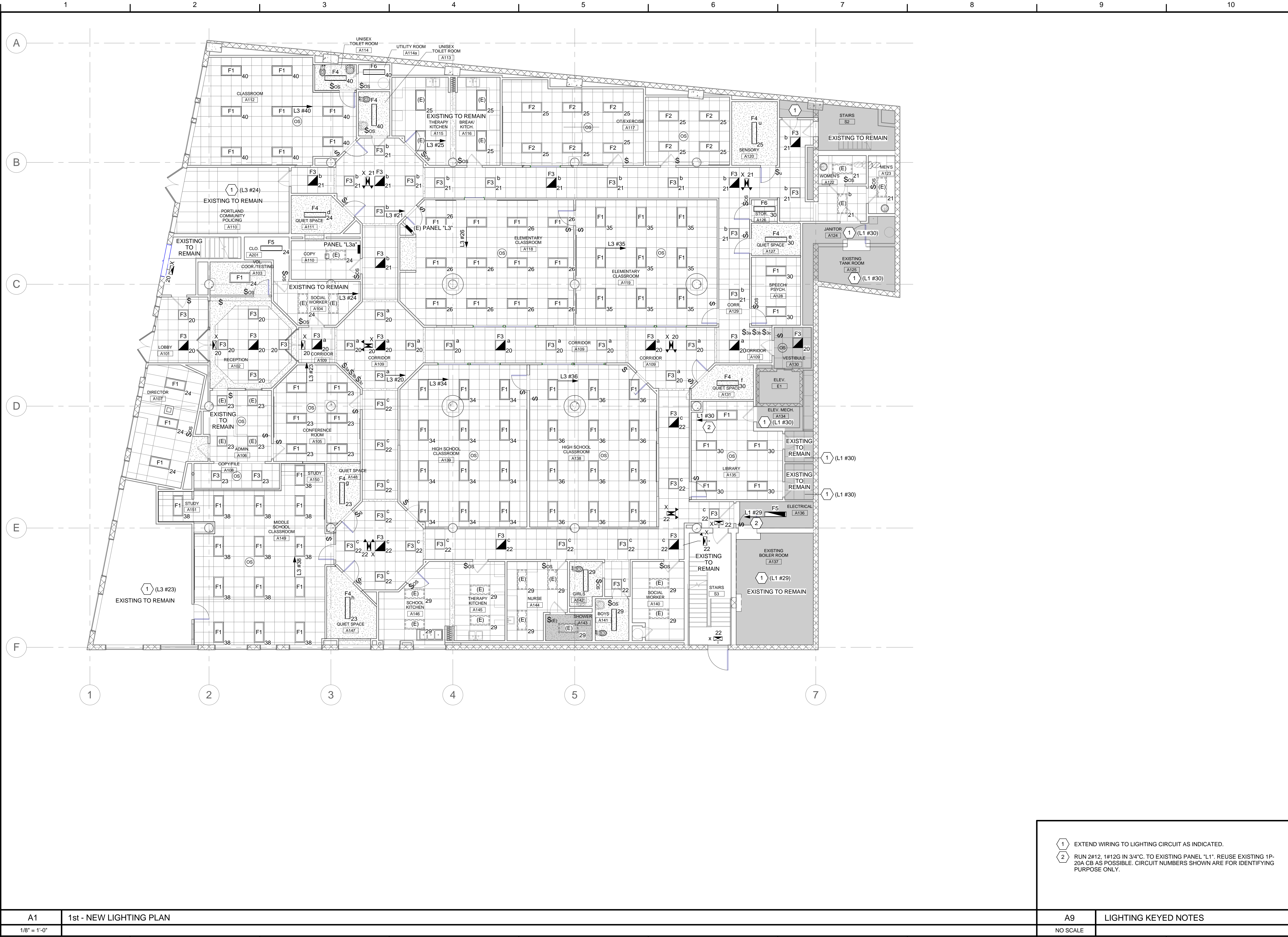
SCALE:
AS NOTED

ISSUE:
BID DOCUMENTS
MARCH 12, 2014

TITLE
FIRST FLOOR
LIGHTING PLAN

SHEET

EL100



- 1 EXTEND WIRING TO LIGHTING CIRCUIT AS INDICATED.
- 2 RUN 2#12, 1#12G IN 3/4" C. TO EXISTING PANEL "L1". REUSE EXISTING 1P-20A CB AS POSSIBLE. CIRCUIT NUMBERS SHOWN ARE FOR IDENTIFYING PURPOSE ONLY.

A1	1st - NEW LIGHTING PLAN	A9	LIGHTING KEYED NOTES
1/8" = 1'-0"		NO SCALE	