



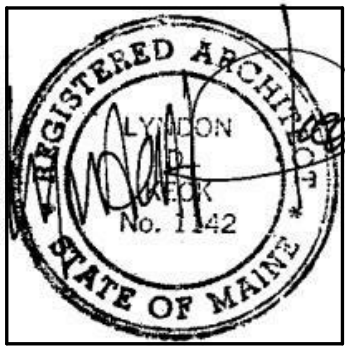
49 DARTMOUTH STREET  
PORTLAND, MAINE 04101  
207-775-1059  
www.pdtarchts.com



160 Veranda Street  
Portland, Maine 04103  
Tel: 207.221.2360  
Fax: 207.221.2366  
Web: www.allied-eng.com

COPYRIGHT 2014  
PDT Architects  
Reuse or reproduction of the  
contents of this document is not  
permitted without written  
permission of PDT Architects.

Portland Public Schools' Downtown Project  
353 CUMBERLAND AVE., PORTLAND, MAINE 04101



JOB NO.  
14018

DRWN. CHK  
AJK

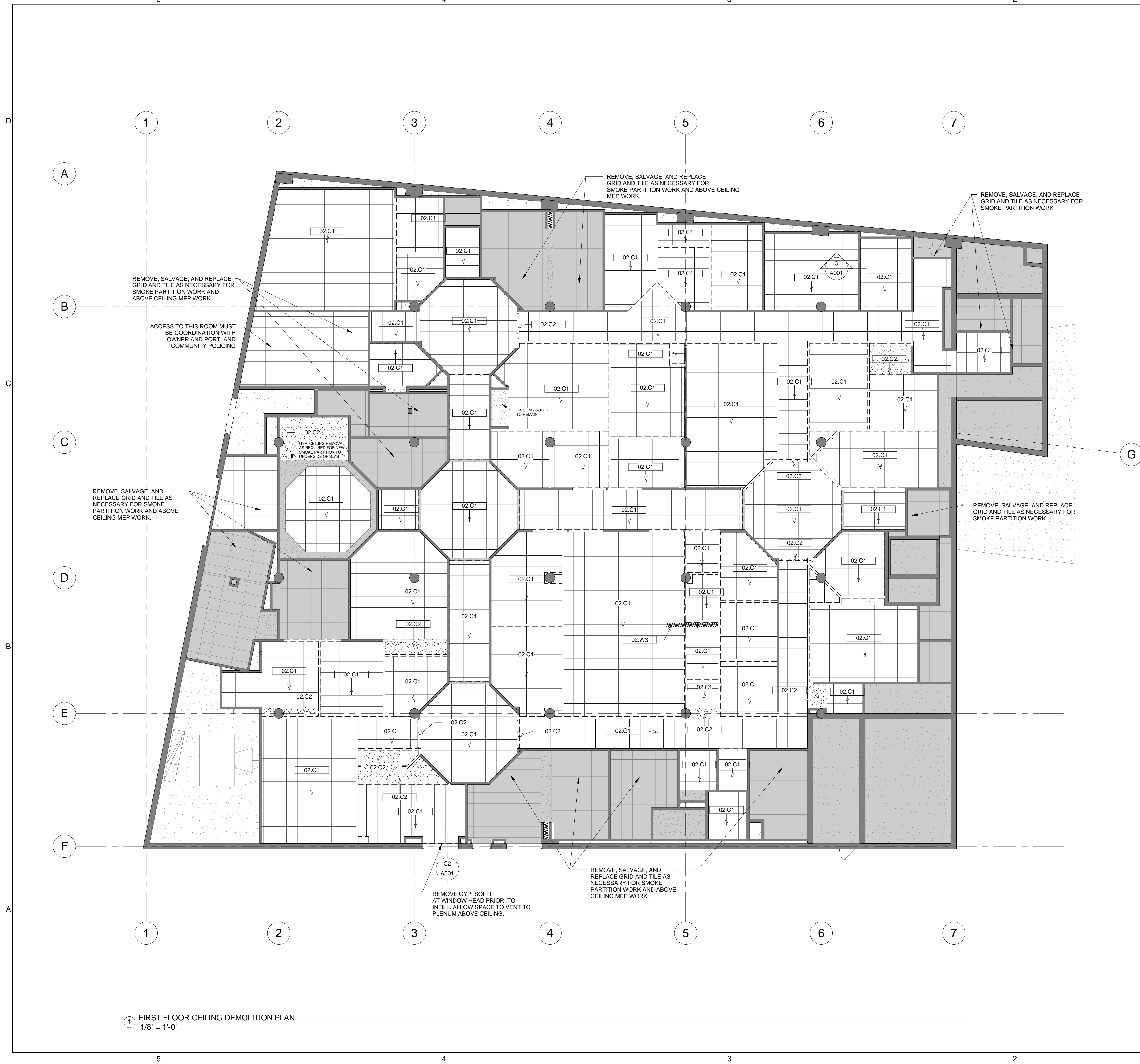
SCALE:  
As indicated

ISSUE  
BID DOCUMENTS  
MARCH 12, 2014

TITLE  
FIRST FLOOR  
CEILING  
DEMOLITION PLAN

SHEET  
AD101.A

- NOTES
- SEE AD100.A GENERAL DEMOLITION AND REMOVAL NOTES AND GENERAL PATCHING AND REPAIRING NOTES
  - CEILING NOT TAGGED FOR DEMOLITION ARE TO REMAIN.
  - COORDINATE CEILING DEMOLITION WITH FIRST FLOOR CEILING PLAN A101.A.



**DEMO LEGEND**

- TO BE DEMOLISHED (DASHED)
- EXISTING CONSTRUCTION TO REMAIN
- NOT-IN-SCOPE (CONFIRM WORK REQUIRED FOR ALL DOORS WITH DOOR SCHEDULE)

**DEMOLITION KEYNOTE LEGEND**

WT	Keynote Text
02.A1	Remove Existing Equipment Complete. Salvage And Safeguard And Return to Owner
02.C1	Ceiling And Grid To Be Removed, Including Associated Suspension Items. Salvage and Safeguard All Ceiling Tiles For Reinstallation. Coordinate Storage Location With Owner.
02.C2	Gyp. Soffit To Be Removed, Including Associated Suspension Items.
02.D1	Door Slab To Be Removed By Owner, Salvaged, And Safeguarded. See Door Schedule A601
02.D2	Door Slab, Frame, And Hardware To Be Removed By Owner, Salvaged, And Safeguarded. Re-purpose Doors and Frames When Possible
02.D3	Remove And Relocate Door, Hardware, And Frame. Safeguard. See Drawing Sheet A100.A For New Location.
02.F1	Flooring To Be Removed To Slab Or Subfloor, Including All Trim, Base, Sleepers, And Associated Items
02.F2	Concrete Slab To Be Removed
02.F3	Resilient Tile Or Sheet Flooring To Be Removed As Part of Controlled Removals.
02.M1	Casework To Be Removed By Owner
02.P1	See MEP Plumbing Demo Sheet
02.P2	Remove Plumbing Fixture Complete. Relocate To Room A123 Per A100. A. See MEP Plumbing Demo Sheet
02.P4	Remove Sink. Reinstall At 34" A.F.F. Per ADA Requirements. See B1/A401
02.W1	Wall To Be Removed, Including All Associated Finishes and Trim
02.W2	Window, Frame, And Hardware To Be Removed Complete By Owner
02.W3	Operable Partition To Be Removed Complete Including Track and Hardware
02.W5	Remove Wainscot Complete. Patch, Repair, and Paint
02.W6	Remove Wainscot And Other Bathroom Accessories
02.W7	Remove Portion of Partition Wall For New Door. Patch And Repair To Match Adjacent.
02.W8	Existing Frame To Be Removed and Salvaged. Alternate 4-Replace Glazing With One-Way Tempered And Reinstall.
02.W9	Remove Two Layers Of GWB. Replace With 1-layer Of GWB and 1-layer Of Plywood. V.I.F.
02.W10	Remove Portion Of Exterior Wall, Including CMU, concrete beam, brick, plaster And All Associated Items As Required For New Door and Lintel. Cut, Patch And Repair.
02.W11	Remove Chair Rail Complete Where Indicated, By Owner

1 FIRST FLOOR CEILING DEMOLITION PLAN  
1/8" = 1'-0"