



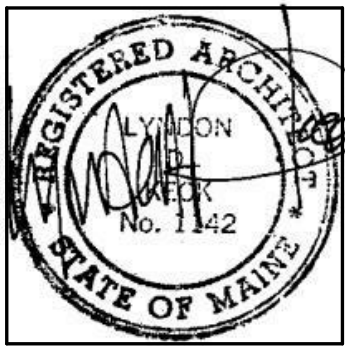
49 DARTMOUTH STREET
PORTLAND, MAINE 04101
207-775-1059
www.pdtarchts.com

Allied Engineering
Structural Mechanical Electrical Commissioning

160 Veranda Street
Portland, Maine 04103
T: 207.221.2260
F: 207.221.2266
Web: www.allied-eng.com

COPYRIGHT 2014
PDT Architects
Reuse or reproduction of the
contents of this document is not
permitted without written
permission of PDT Architects.

Portland Public Schools' Downtown Project
353 CUMBERLAND AVE., PORTLAND, MAINE 04101



JOB NO.
14018

DRWN. CHK
AJK

SCALE:
As indicated

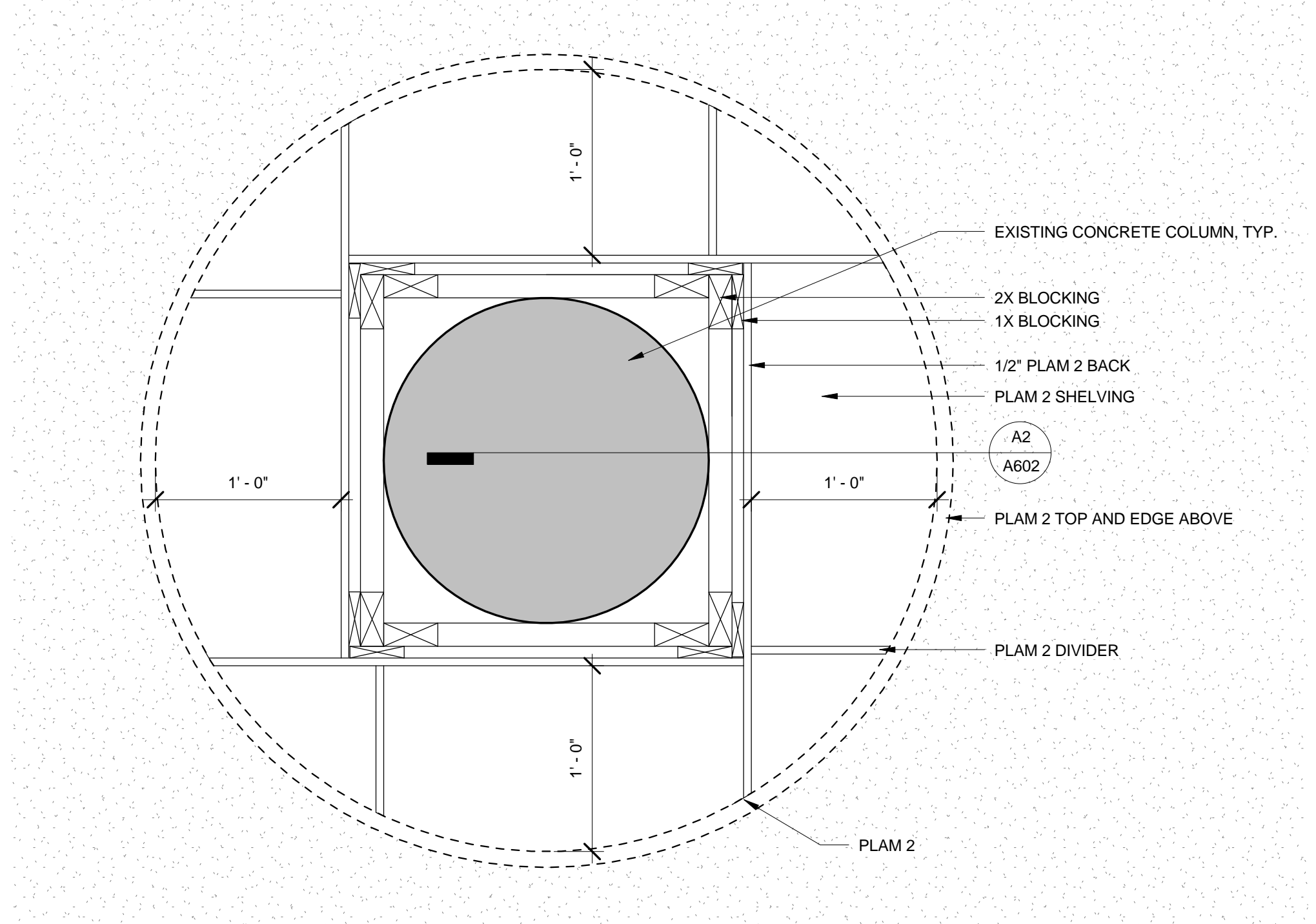
ISSUE
BID DOCUMENTS
MARCH 12, 2014

TITLE
CASEWORK
DETAILS

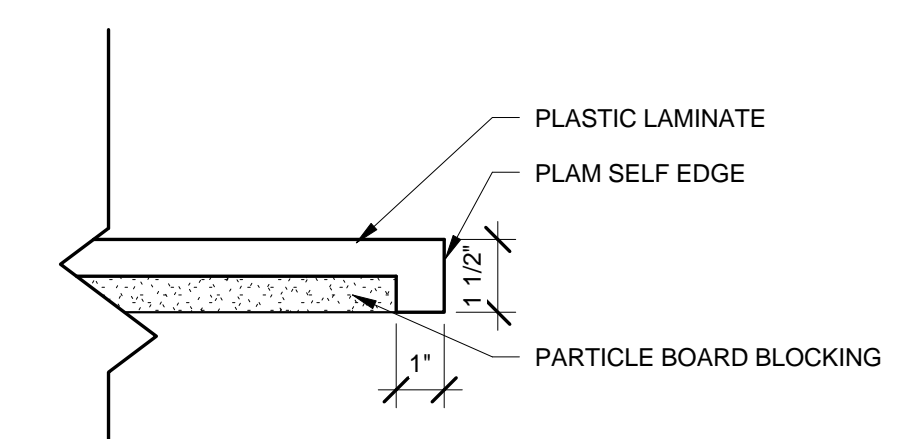
SHEET
A602

GENERAL CASEWORK NOTES

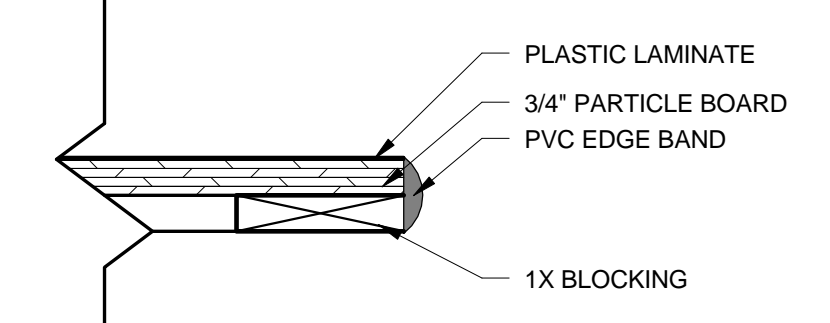
1. Refer to A001 for Project General Notes, Abbreviations, and Symbols.
2. See Plans and Interior Elevations for size and location.



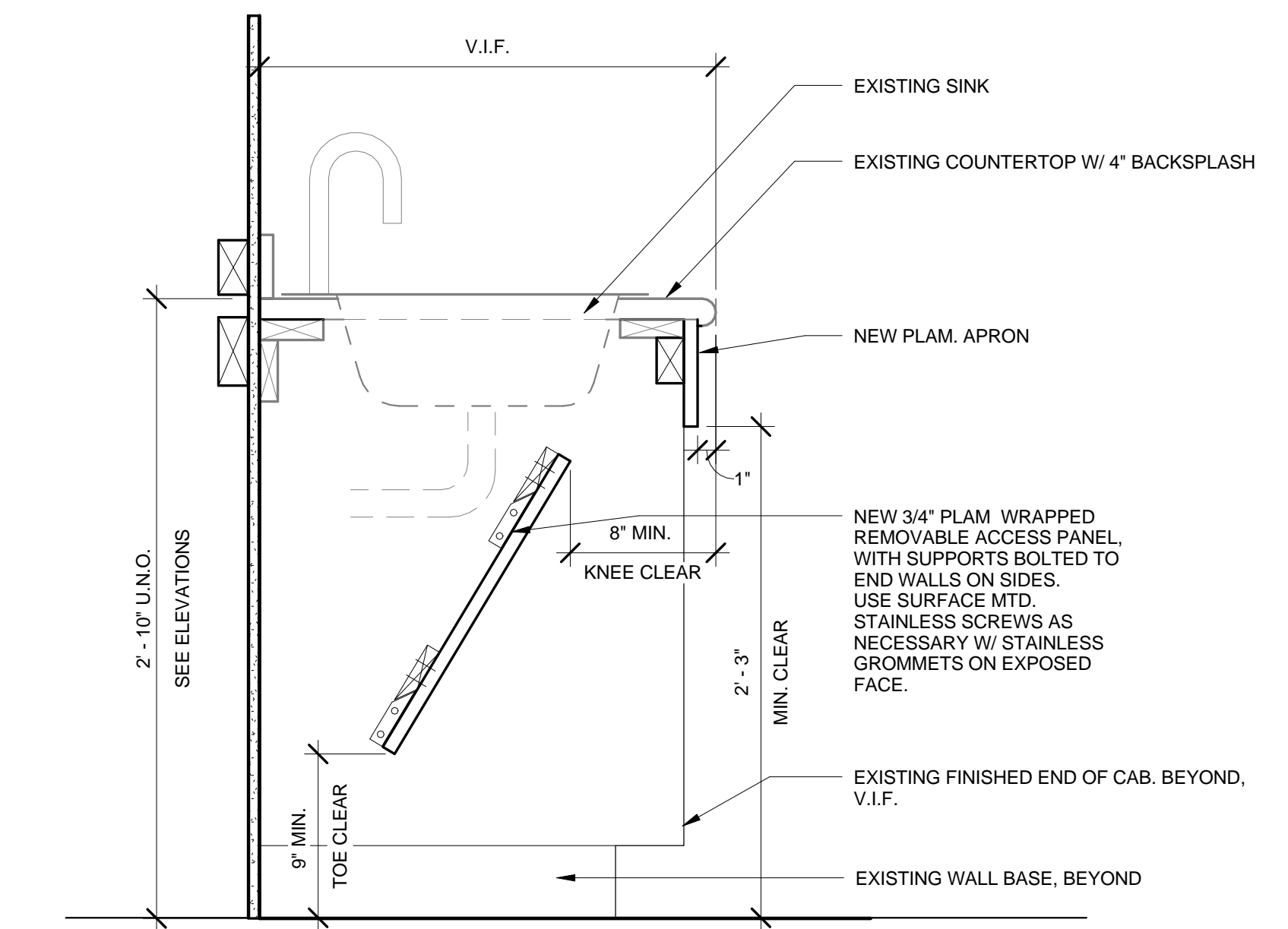
B5 ALTERNATE 5 - PLAN DETAIL AT RADIAL CASEWORK, TYP.
1 1/2" = 1'-0"



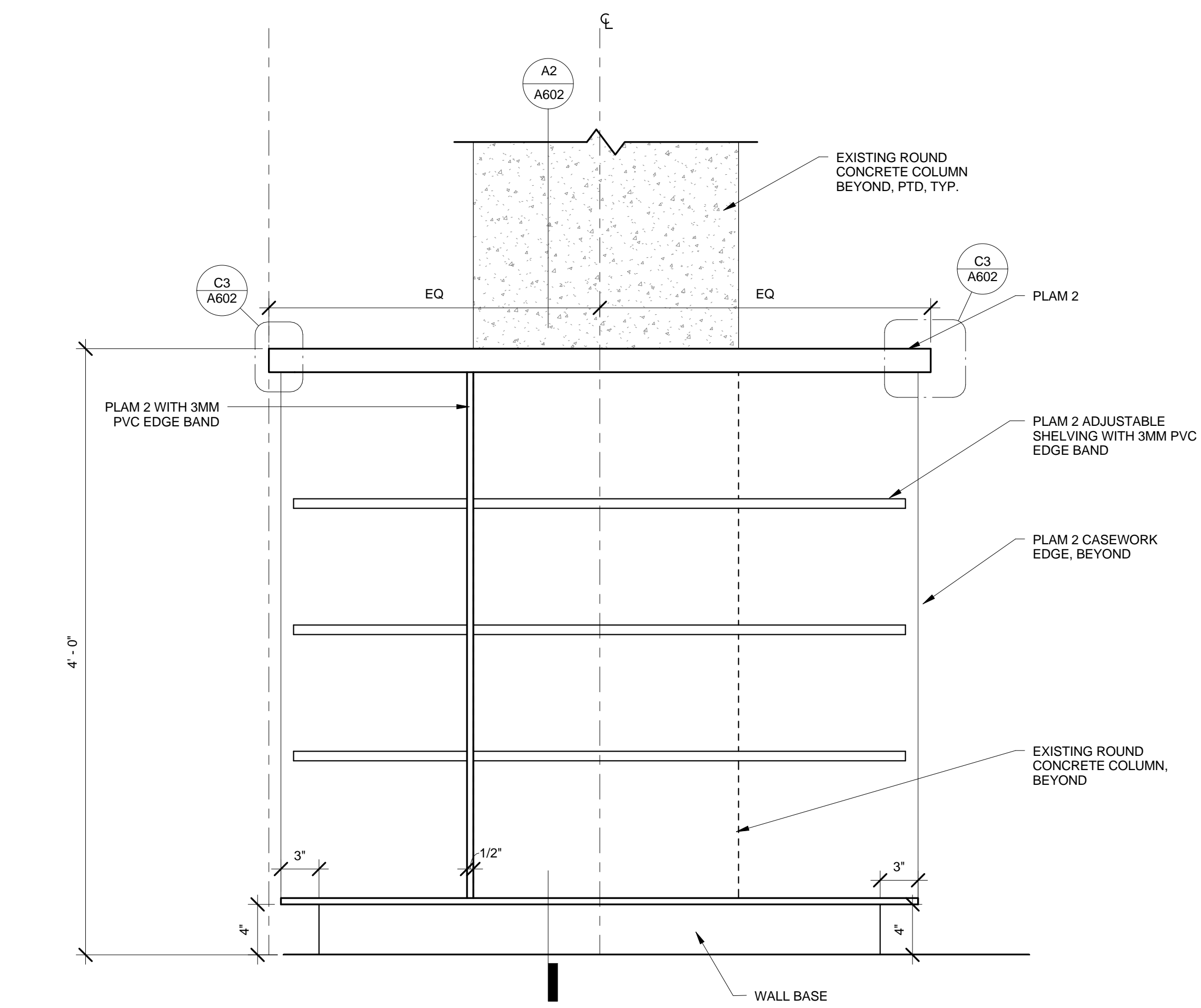
C3 ALTERNATE #5 - BOOKCASE EDGE DETAIL
3" = 1'-0"



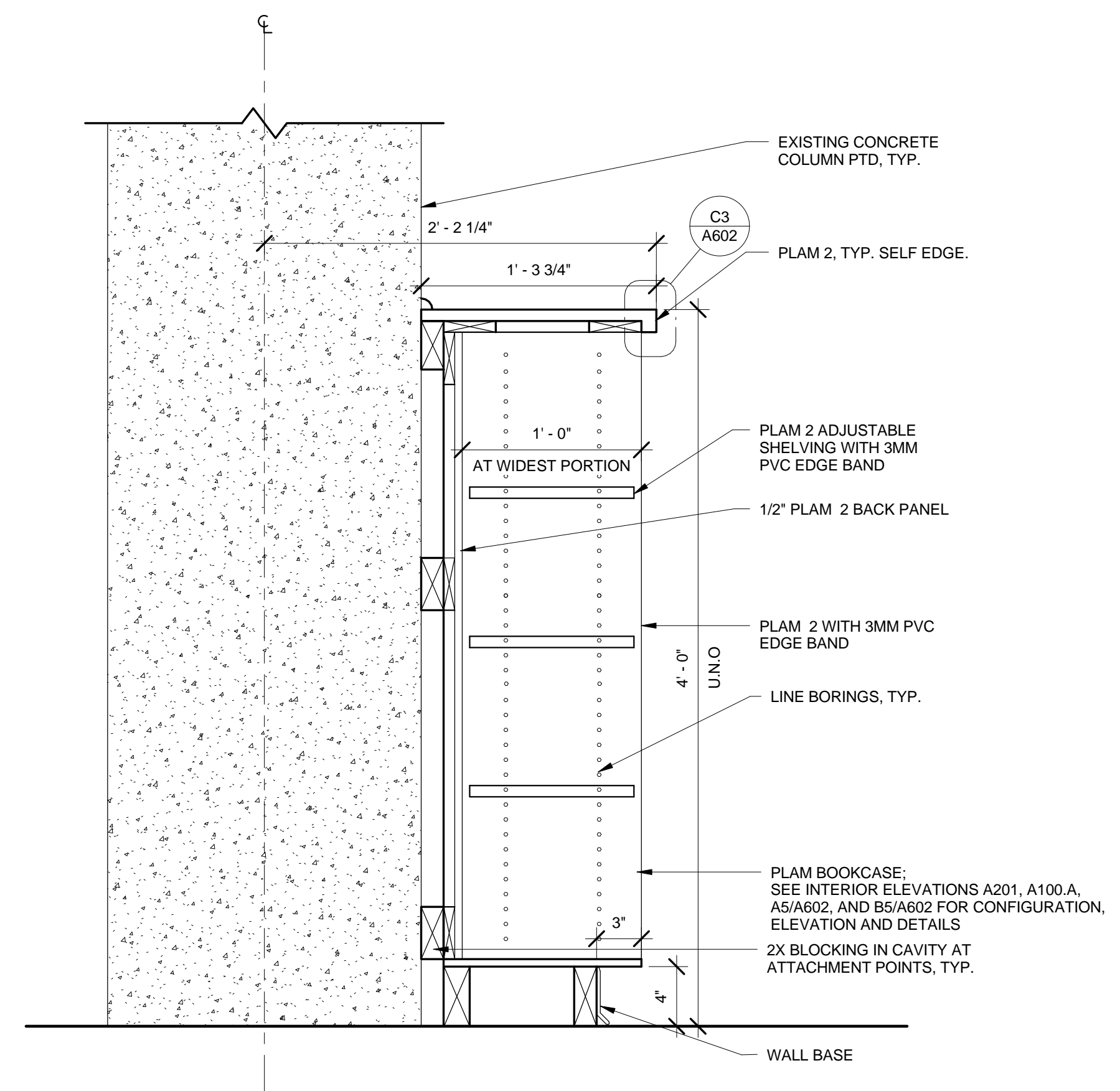
B3 COUNTER EDGE DETAIL
3" = 1'-0"



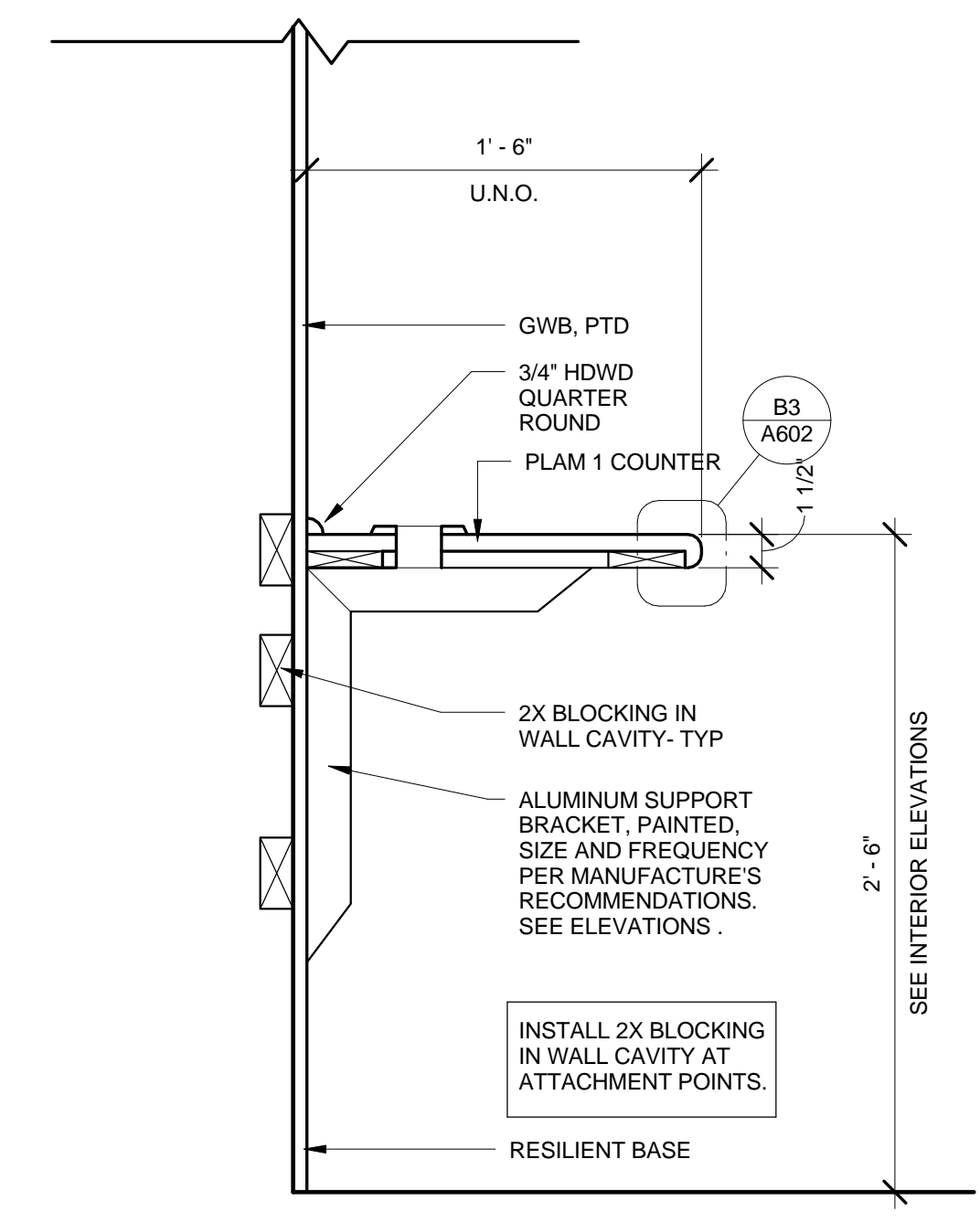
B1 SINK WITH APRON
1 1/2" = 1'-0"



A5 ALTERNATE 5 - CIRCULAR BOOKCASE ELEVATION - TYPICAL
1 1/2" = 1'-0"



A2 ALTERNATE 5 - CLASSROOM BOOKCASE SECTION
1 1/2" = 1'-0"



A1 TYPICAL COUNTER
1 1/2" = 1'-0"