



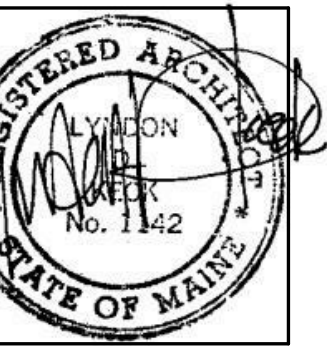
49 DARTMOUTH STREET
PORTLAND, MAINE 04101
207-775-1059
www.pdtarchts.com

Allied Engineering
Structural Mechanical Electrical Commissioning

160 Veranda Street
Portland, Maine 04103
T: 207.221.2360
F: 207.221.2366
Web: www.allied-eng.com

COPYRIGHT 2014
PDT Architects
Reuse or reproduction of the
contents of this document is not
permitted without written
permission of PDT Architects.

Portland Public Schools' Downtown Project
353 CUMBERLAND AVE., PORTLAND, MAINE 04101



JOB NO.
14018

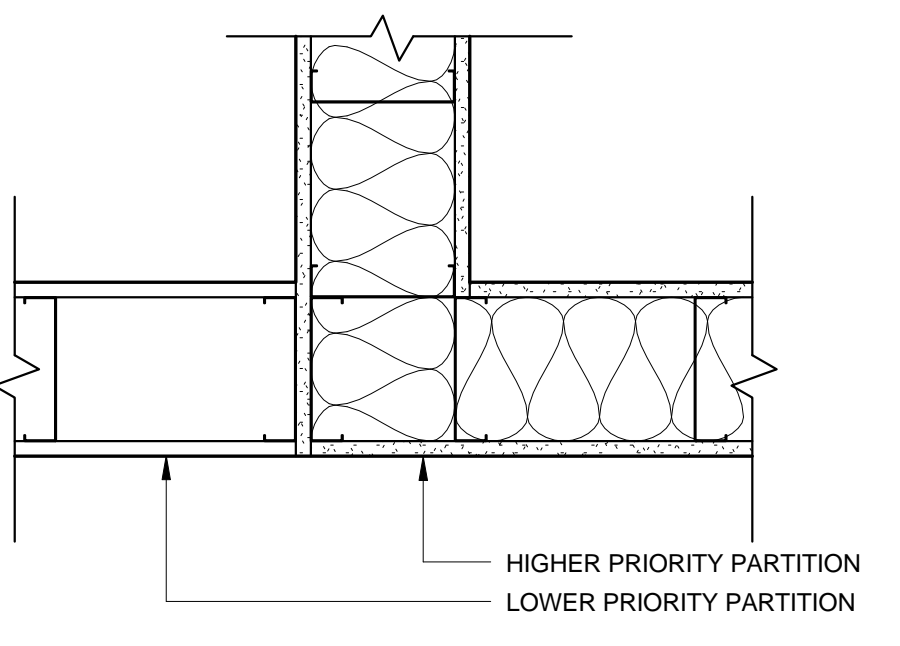
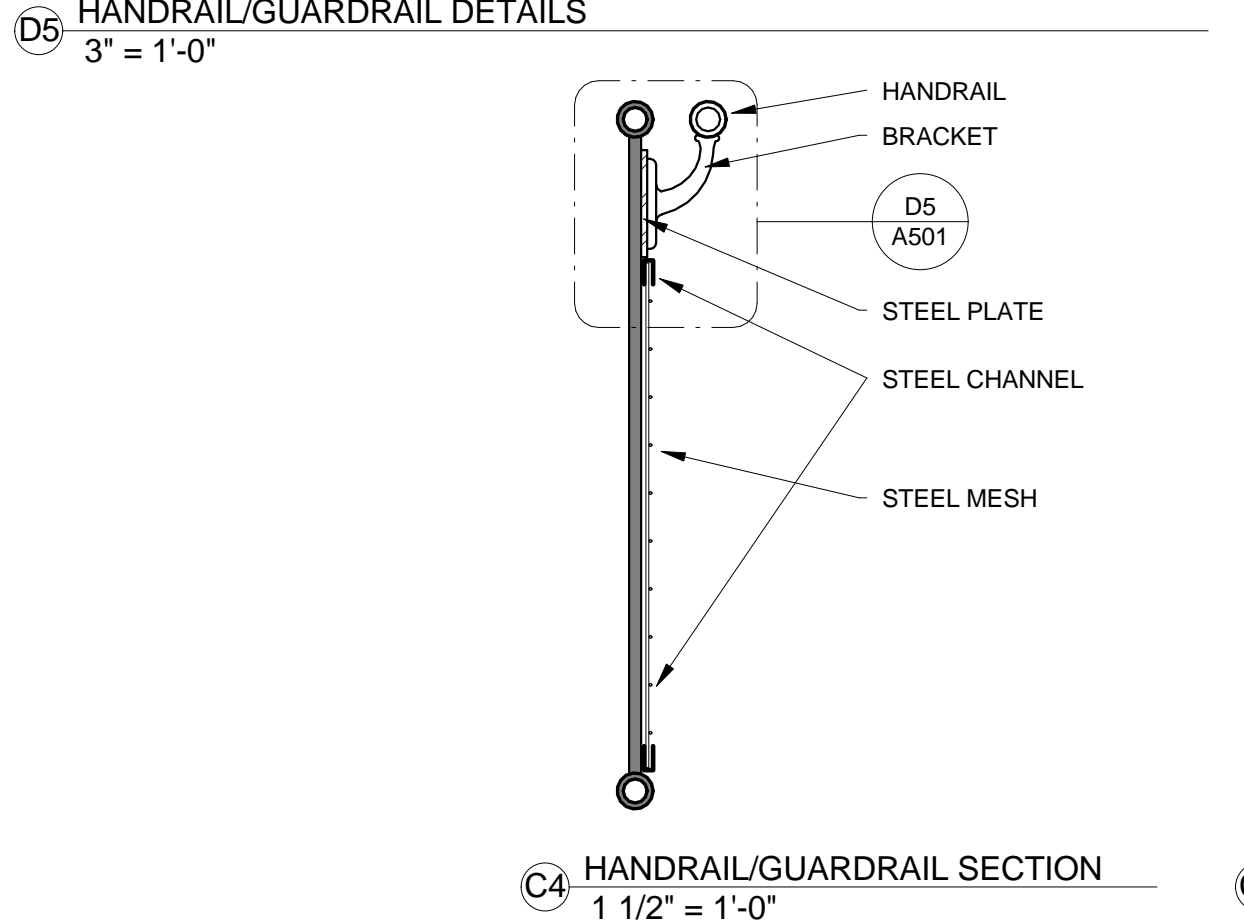
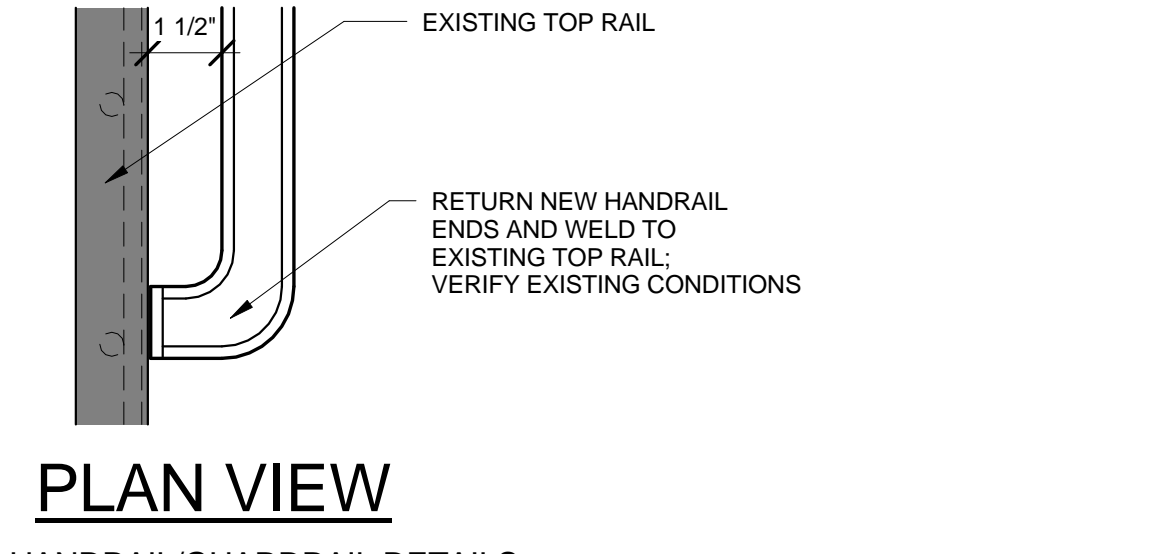
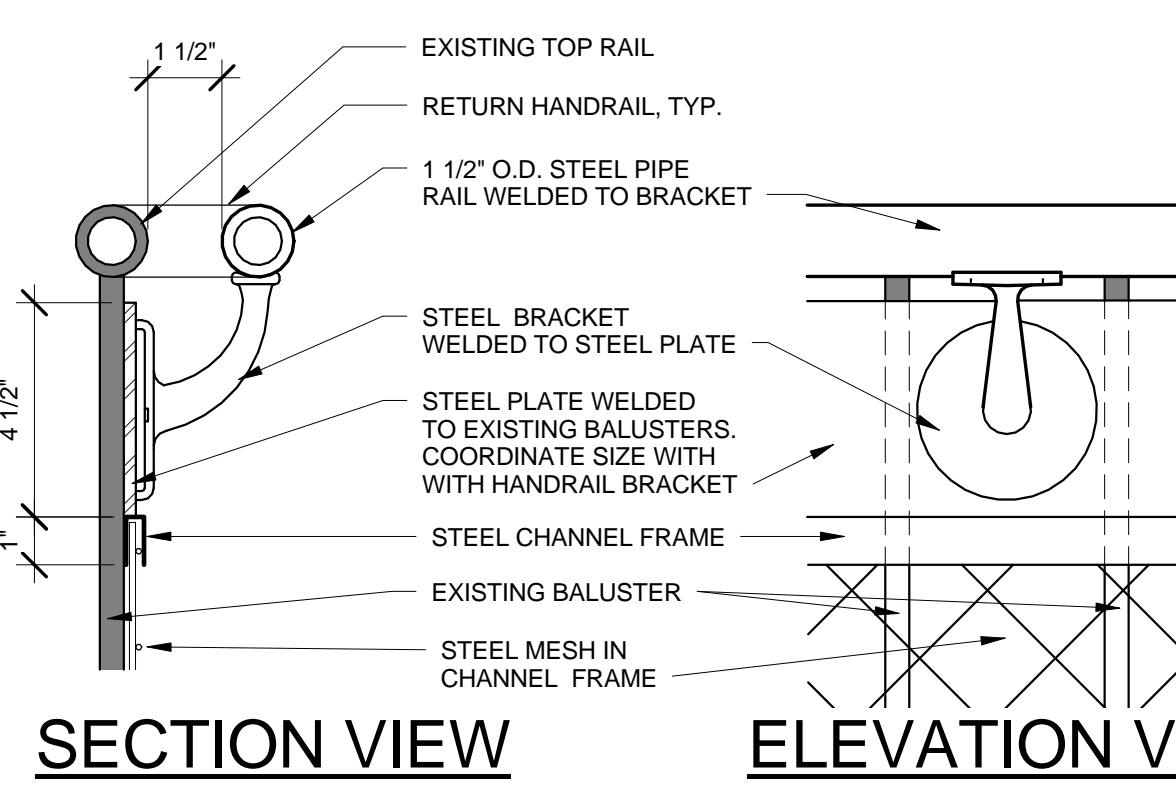
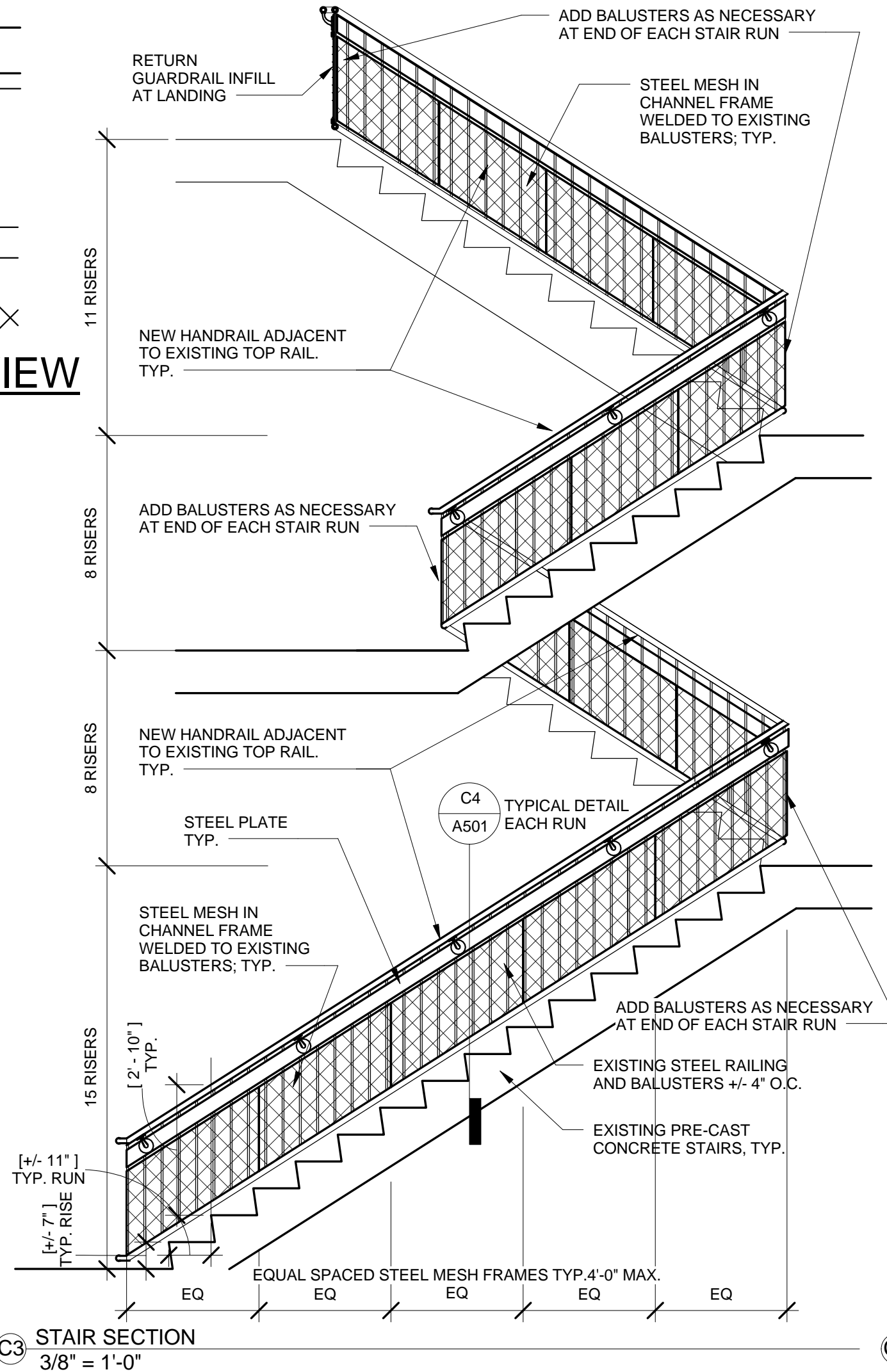
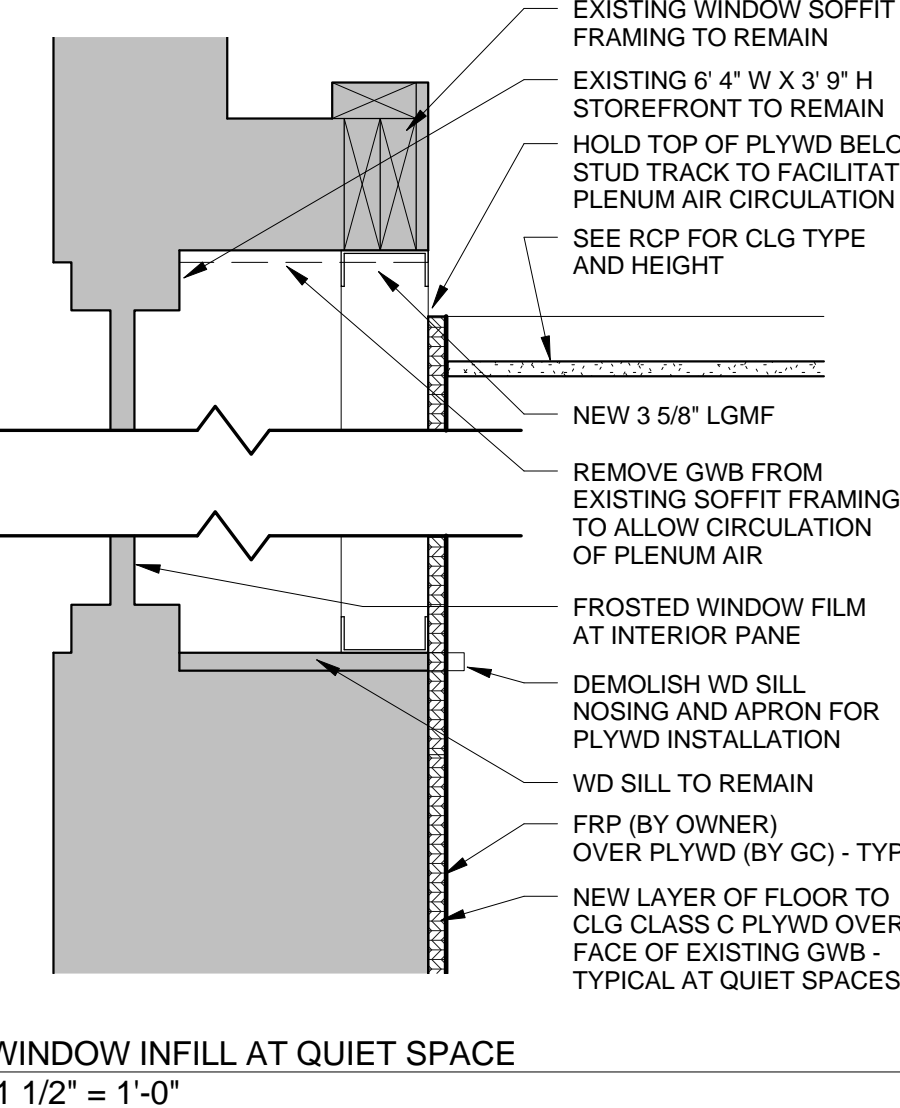
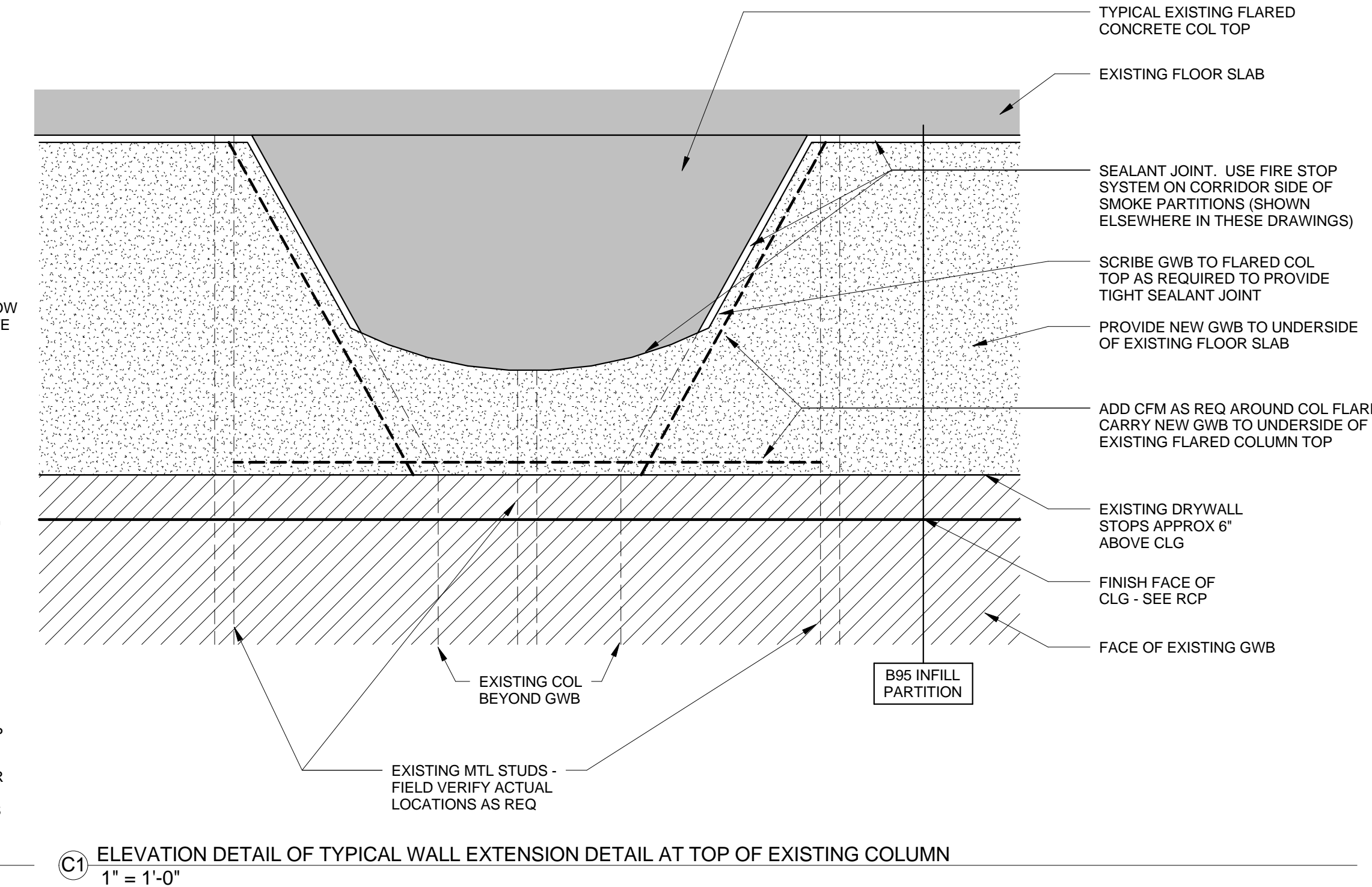
DRWN. CHK
AJK

SCALE:
As indicated

ISSUE
BID DOCUMENTS
MARCH 12, 2014

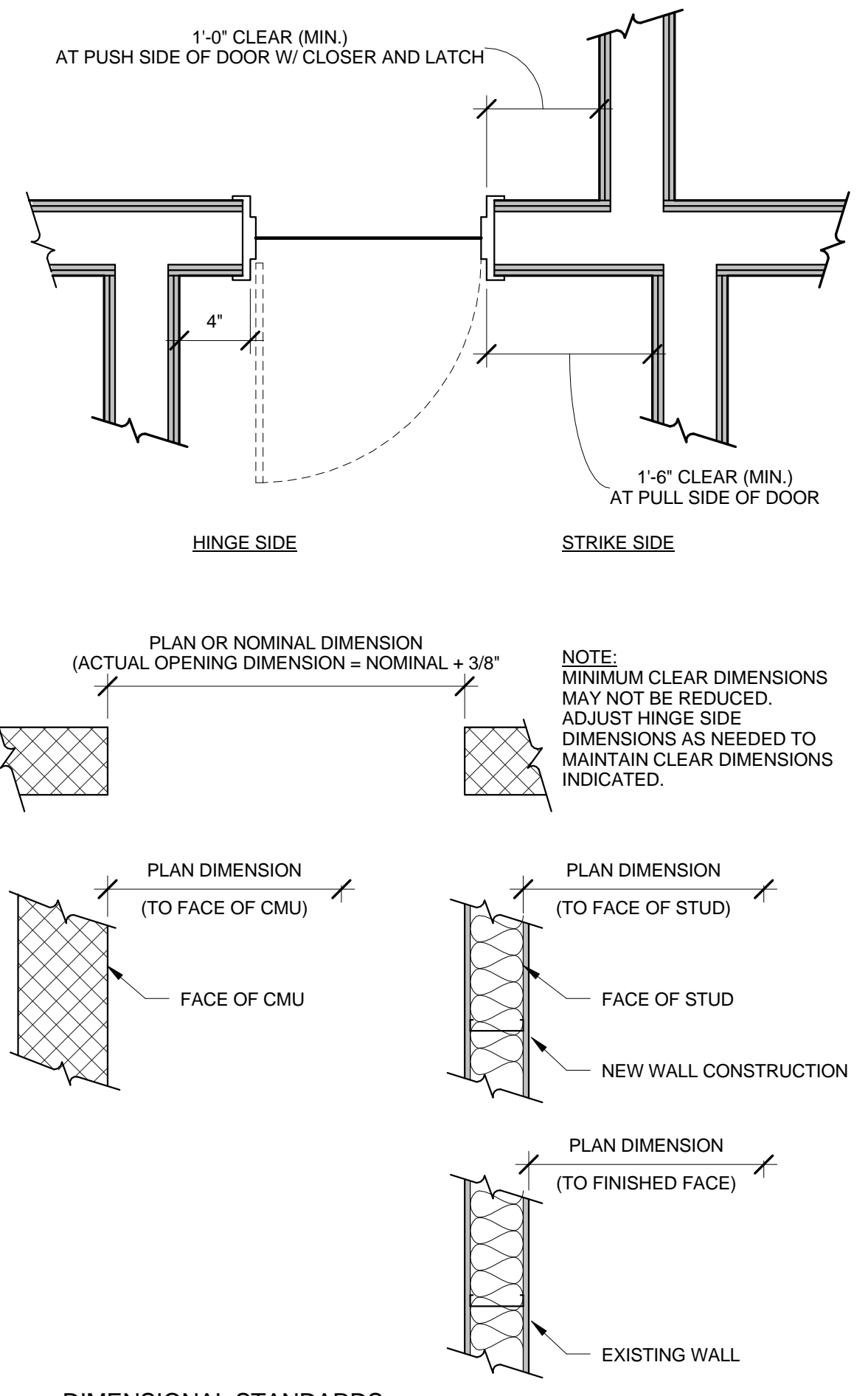
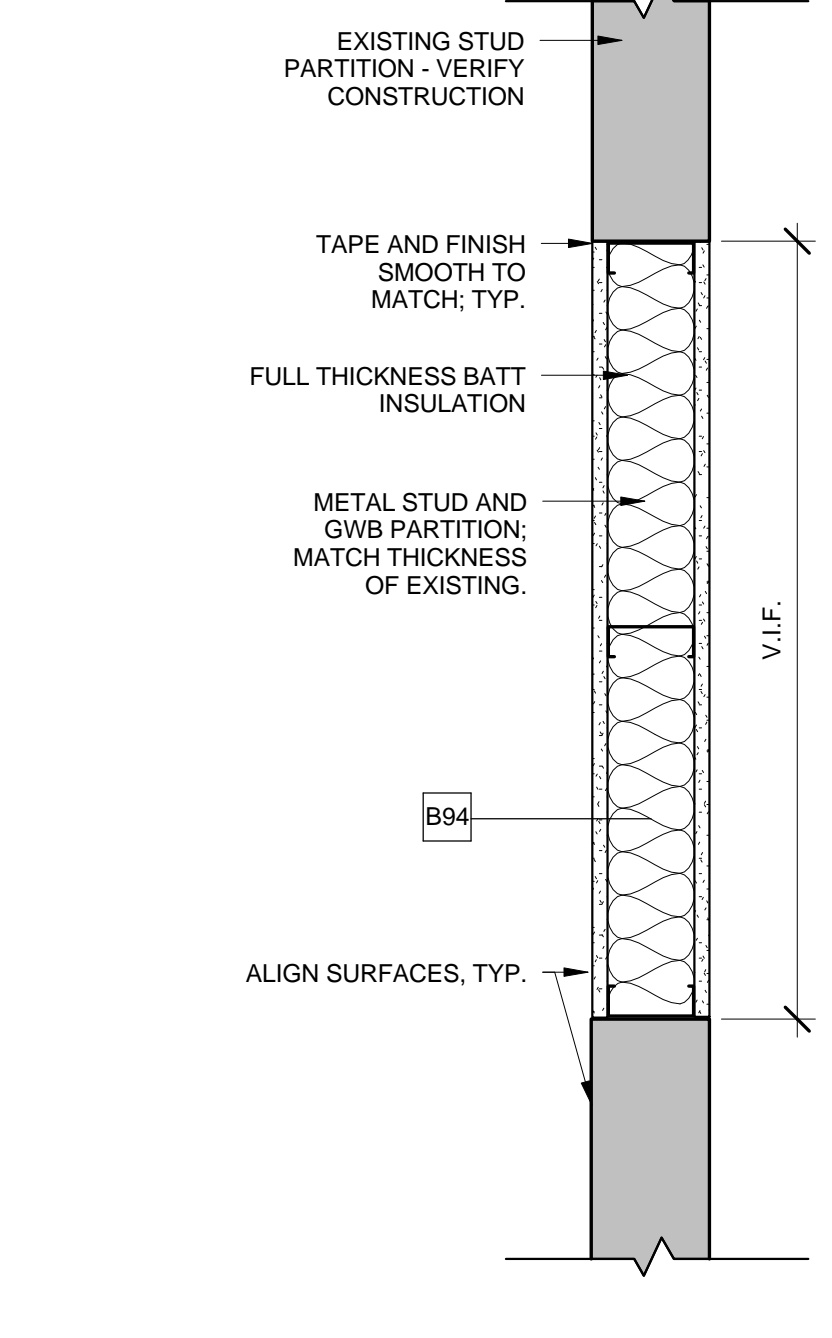
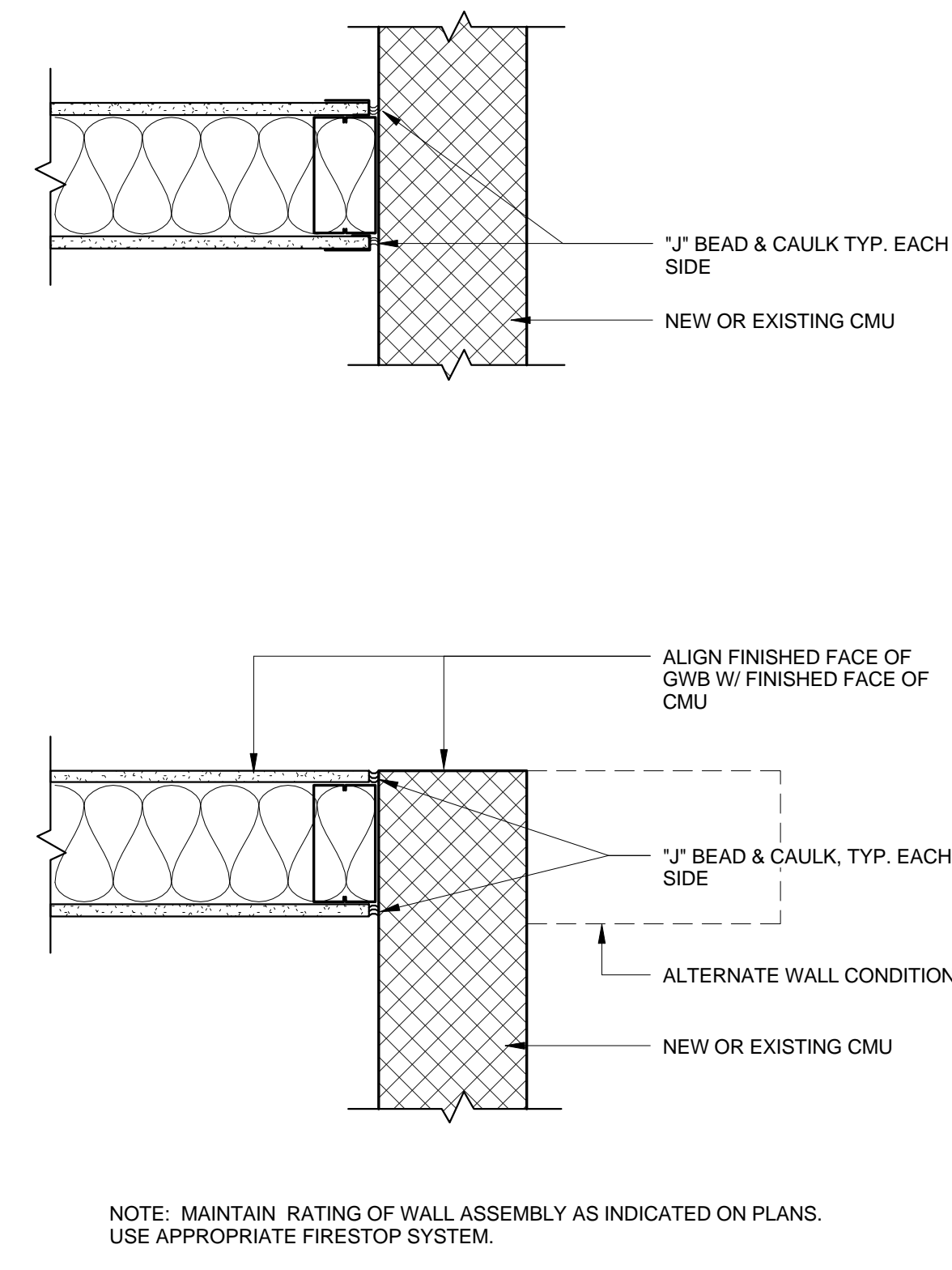
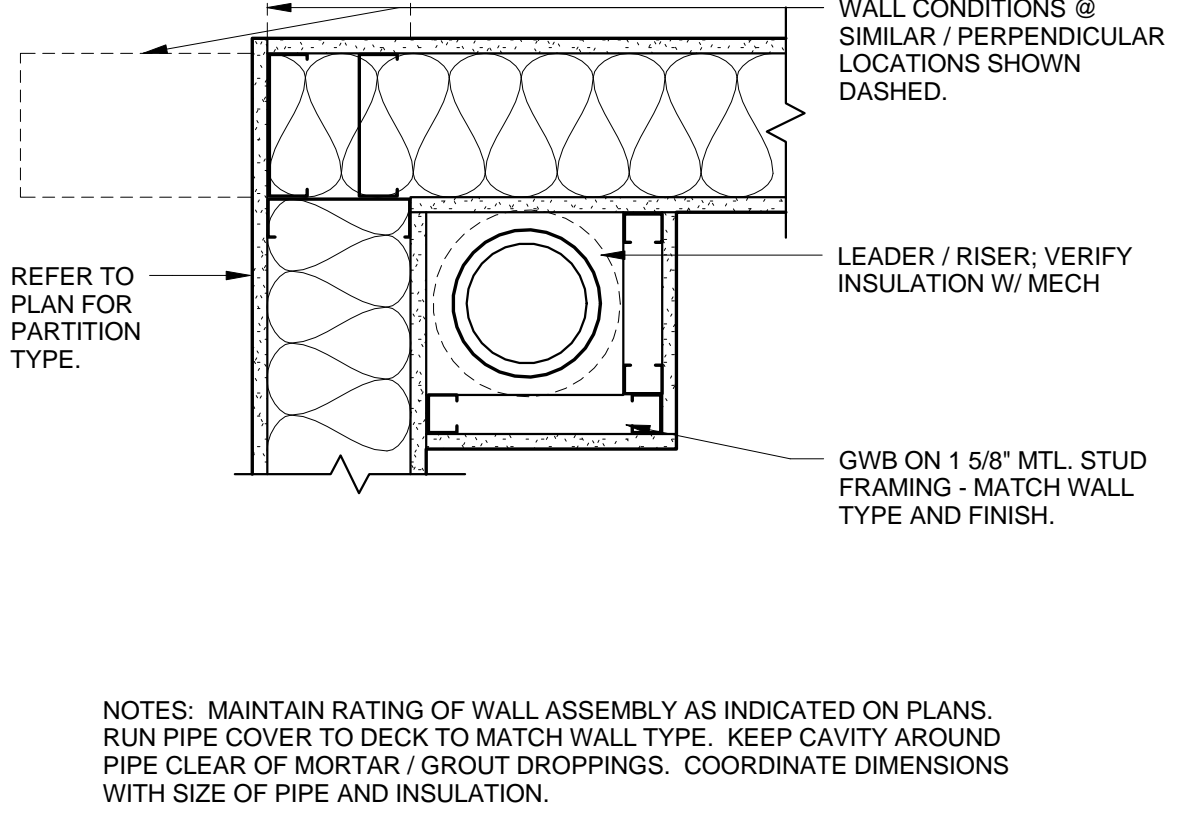
TITLE
DETAILS

SHEET
A501



PARTITION PRIORITY LEGEND		
FIRE & SMOKE	HIGHEST ↑	2-HOUR FIRE WALL 2-HOUR FIRE BARRIER AT EXIT ENCLOSURE 1-HOUR FIRE BARRIER 1-HOUR FIRE BARRIER AT EXIT ENCLOSURE 1-HOUR FIRE BARRIER SMOKE PARTITION
	LOWEST ↓	NON-RATED PARTITION OR FURRING
SOUND CLASS	HIGHEST ↑	STC >= 60
	MIDDLE	60 > STC > 50
	LOWEST ↓	NO STC

ALL COMPONENTS OF THE HIGHER PRIORITY PARTITION ASSEMBLY MUST CONTINUE UNINTERRUPTED PAST THE LOWER PRIORITY PARTITION ASSEMBLY.
SEE SHEET A0.2 FOR FIRE, SMOKE AND STC VALUES OF PARTITION ASSEMBLIES.



HANDRAIL & GUARDRAIL GENERAL NOTES:

- HANDRAIL AND GUARDRAILS SHALL COMPLY WITH MINIMUM SPECIFIED STRUCTURAL PERFORMANCE REQUIREMENTS
- GUARDRAILS SHALL NOT ALLOW THE PASSAGE OF A 4-INCH SPHERE BETWEEN MEMBERS. PROVIDE INFILL BALUSTERS AS NECESSARY.
- ALL HANDRAIL AND GUARDRAIL COMPONENTS SHALL COMPLY WITH THE APPLICABLE PROVISIONS OF THE IBC, NFPA 101, AND ADA.
- EASE ALL EDGES