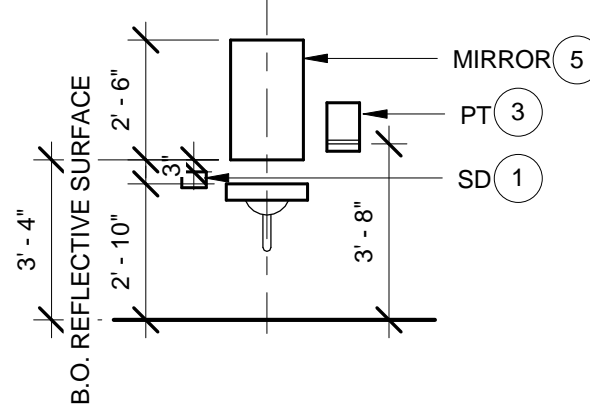
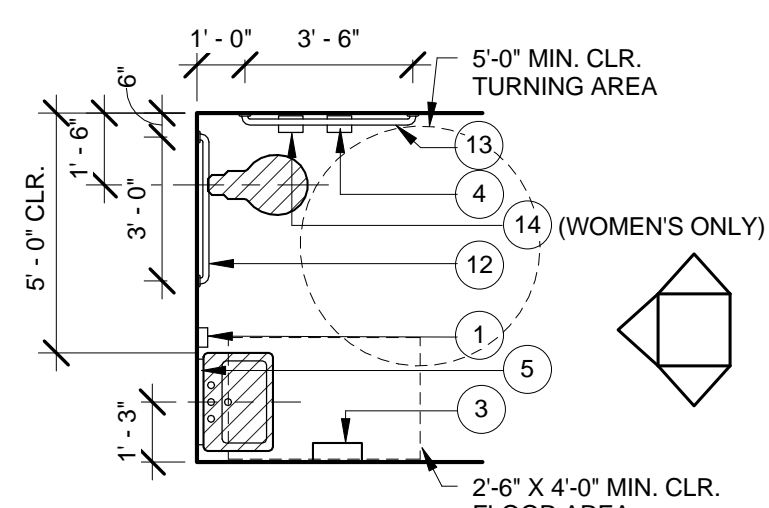


TYPICAL BARRIER FREE WATER CLOSET ASSEMBLY ELEVATION (REFER TO ACCESSORIES SCHEDULE BELOW)

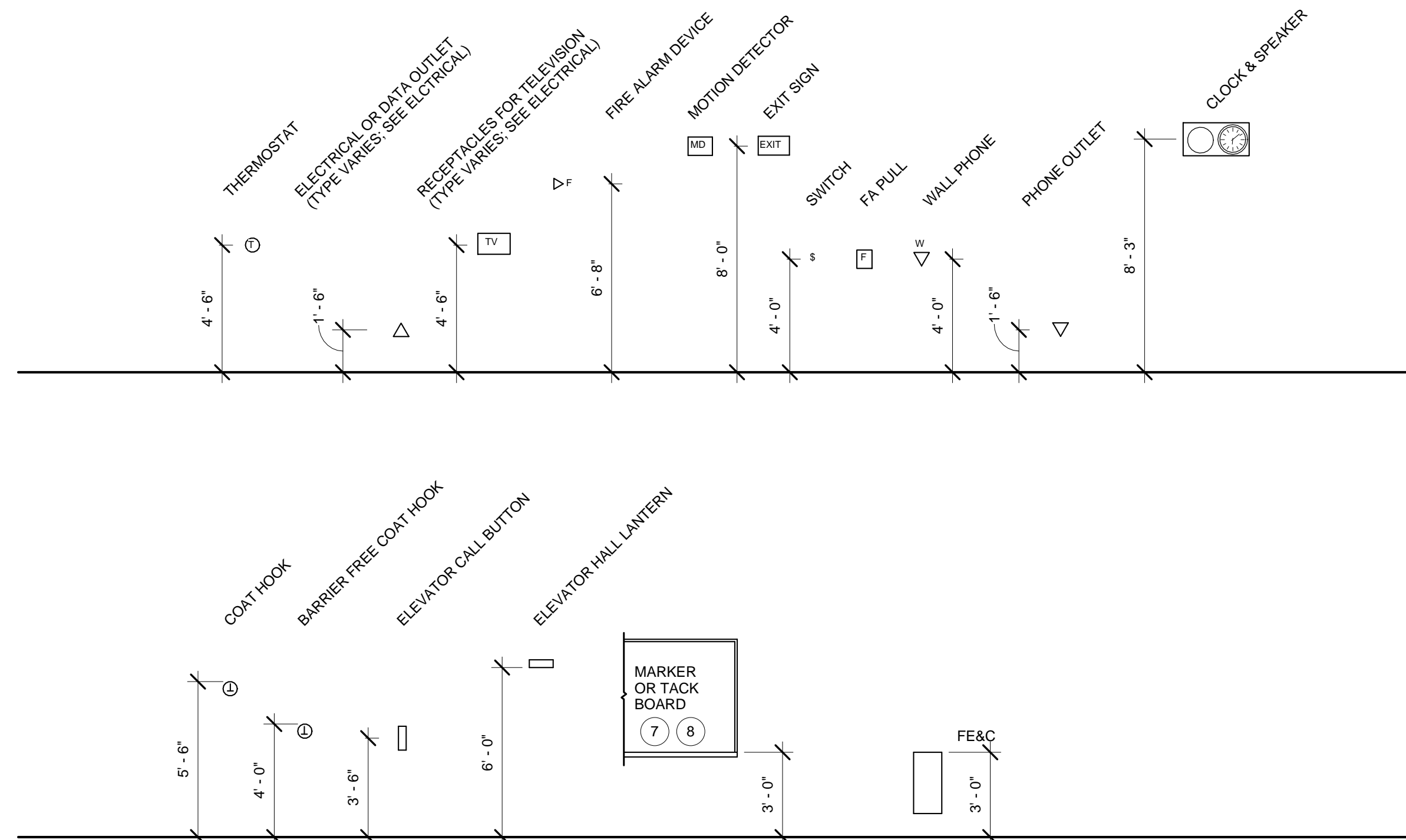


TYPICAL BARRIER FREE LAVATORY ASSEMBLY ELEVATION (REFER TO ACCESSORIES SCHEDULE BELOW)



TYPICAL BARRIER FREE SINGLE TOILET PLAN (REFER TO ACCESSORIES SCHEDULE BELOW)

(B5) TYPICAL MOUNTING HEIGHTS
1/4" = 1'-0"

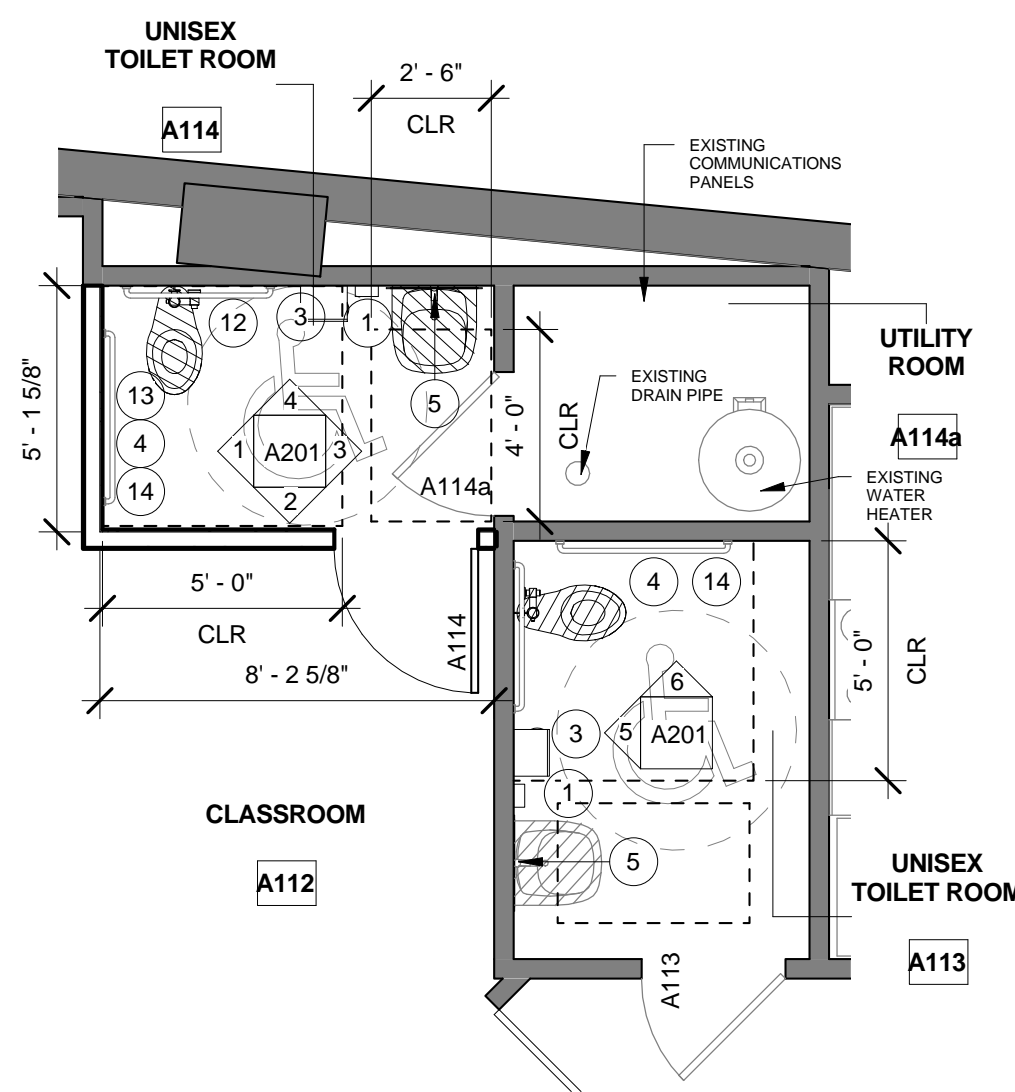


- MOUNTING HEIGHT GENERAL NOTES:**
- SEE MECHANICAL, ELECTRICAL, AND TECHNOLOGY DRAWINGS FOR SPECIFIC FIXTURE OR DEVICE LOCATION AND DESIGNATION AND ADDITIONAL MOUNTING REQUIREMENTS.
 - COORDINATE LOCATION OF ALL RECEPTACLES, FIXTURES OR DEVICES WITH INTERIOR ELEVATIONS AND CASEWORK LOCATIONS.
 - REFER TO MANUFACTURER'S INSTRUCTIONS FOR SPECIFIC ADA REQUIRED MOUNTING HEIGHTS AS APPLICABLE.

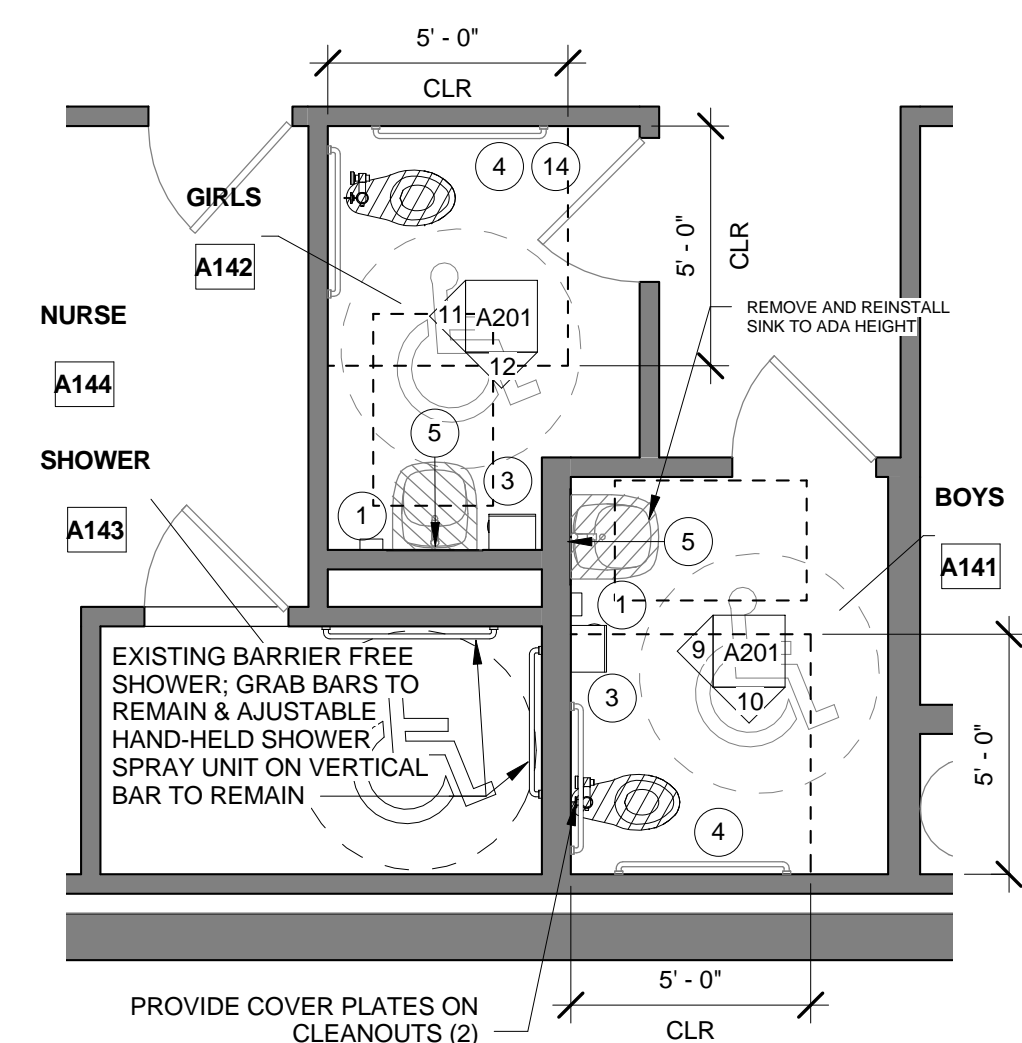
ACCESSORIES SCHEDULE		
1	SOAP DISPENSER (SD)	O/O
2	HAND SANITIZER	O/O
3	PAPER TOWEL DISPENSER (PT)	O/O
4	TOILET PAPER DISPENSER (TPD)	O/O
5	MIRROR	O/O
6	COUNTER-MOUNTED EYEWASH	C/C
7	MARKER BOARD (4H X 8W) (MB)	O/O
8	TACK BOARD (4W X 4H) (TB)	O/O
9	UNDER COUNTER REFRIGERATOR	O/O
10	COPIER	O/O
11	TRIPLE BASIN SINK	O/O
12	36" GRAB BAR	C/C
13	42" GRAB BAR	C/C
14	SANITARY NAPKIN RECEPTACLE (SNR)	O/O
15	WIRE SHELVING	O/O
16	SALAD BAR	O/O
17	MILK COOLER	O/O
18	DELI COOLER	O/O
19	WORK TABLE	O/O
20	REFRIGERATOR	O/O

PROVIDE BLOCKING AT ALL WALL MOUNTED ACCESSORIES.
O/O=OWNER PROVIDED/OWNER INSTALLED
C/C=CONTRACTOR PROVIDED/CONTRACTOR INSTALLED
O/C=OWNER PROVIDED/CONTRACTOR INSTALLED

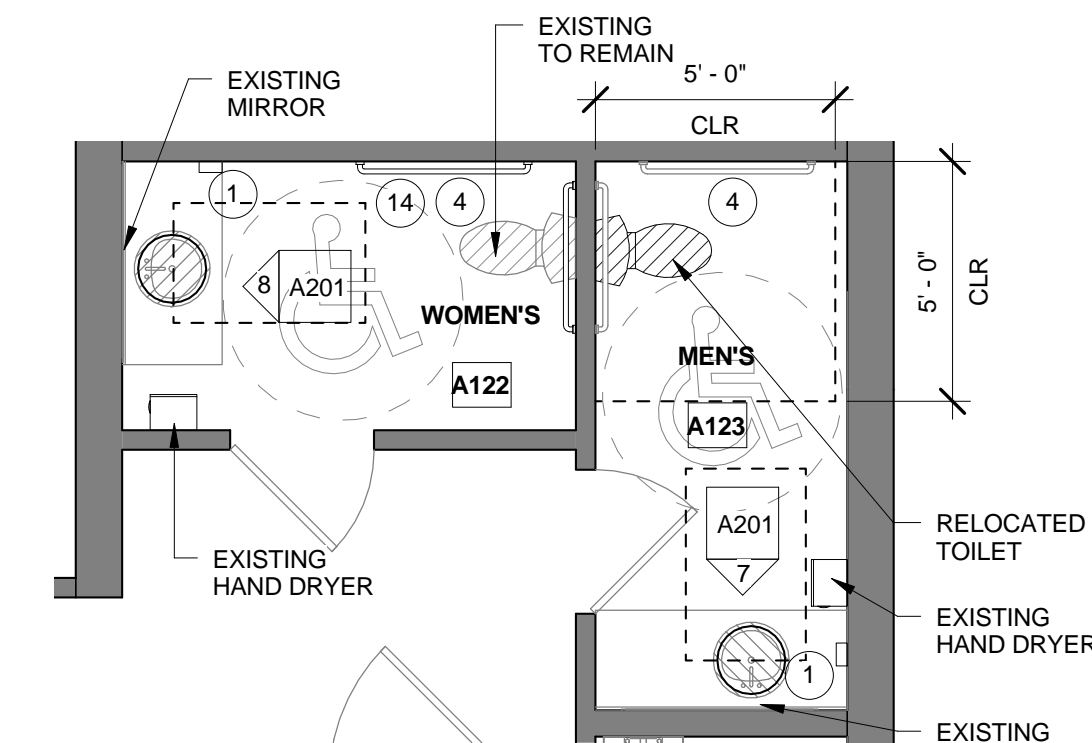
NOTE:
1. REFER TO TYPICAL MOUNTING HEIGHTS PER B5/A401
2. HATCHED PLUMBING FIXTURES DENOTE ADA COMPLIANT FIXTURES



(3) ENLARGED UNISEX TOILET ROOMS
1/4" = 1'-0"



(2) ENLARGED TOILET ROOMS PLAN
1/4" = 1'-0"



(1) ENLARGED STAFF TOILET ROOM PLAN
1/4" = 1'-0"

INTERIOR GENERAL NOTES

- All mounting heights and clearances at Toilet rooms and elsewhere shall comply with the latest version of the ADA Accessibility Guidelines (ADAAG).
 - Barrier-Free clearances are given. These **clear** dimensions shall be maintained in cases of discrepancy.
 - All dimensions given for fixture and accessory locations are **clear** dimensions from finished surfaces, unless noted otherwise. Coordinate actual dimensions with wall construction and finishes.
 - Locate all controls, flush valves, shutoffs and similar items in accordance with the latest version of the ADA Accessibility Guidelines (ADAAG).
 - A range of mounting heights may be given for some items. Maintain a consistent mounting height, within the given range, throughout the Project, unless noted otherwise.
- Install blocking behind all surface-applied fixtures, trim, grab bars, shelves, chair rails, picture rails, base moldings, tack or marker boards, window treatment, wall or base cabinets or counters, and miscellaneous accessories mounted on stud walls.
- At existing wall construction, coordinate appropriate fasteners for objects not receiving loads. Install per manufacturer's recommendations. At wall mounted items that carry loads (grab bars, handrails, counters, shelves, etc.), provide solid blocking within the wall construction and cut and patch as necessary.
- Install transition strips between dissimilar flooring materials.
- All wood not indicated to be painted shall be natural finish (clear).
- All grab bar components shall be able to withstand a horizontal load of 250lbs at any point.
- At metal stud partitions, use MR GWB at all Toilet Rooms.



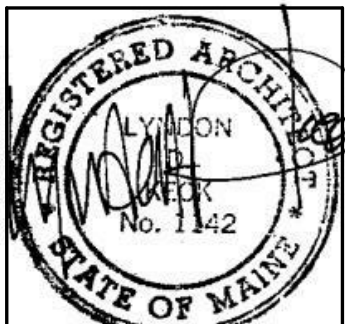
49 DARTMOUTH STREET
PORTLAND, MAINE 04101
207-775-1059
www.pdtarchts.com



160 Veranda Street
Portland, Maine 04103
T: 207.221.2360
F: 207.221.2366
Web: www.allied-eng.com

COPYRIGHT 2014
PDT Architects
Reuse or reproduction of the contents of this document is not permitted without written permission of PDT Architects.

Portland Public Schools' Downtown Project
353 CUMBERLAND AVE., PORTLAND, MAINE 04101



JOB NO.
14018

DRWN. CHK
AJK

SCALE:
As indicated

ISSUE
BID DOCUMENTS
MARCH 12, 2014

TITLE
ENLARGED TOILET ROOMS & TYP. MOUNTING HEIGHTS & LAYOUTS

SHEET
A401