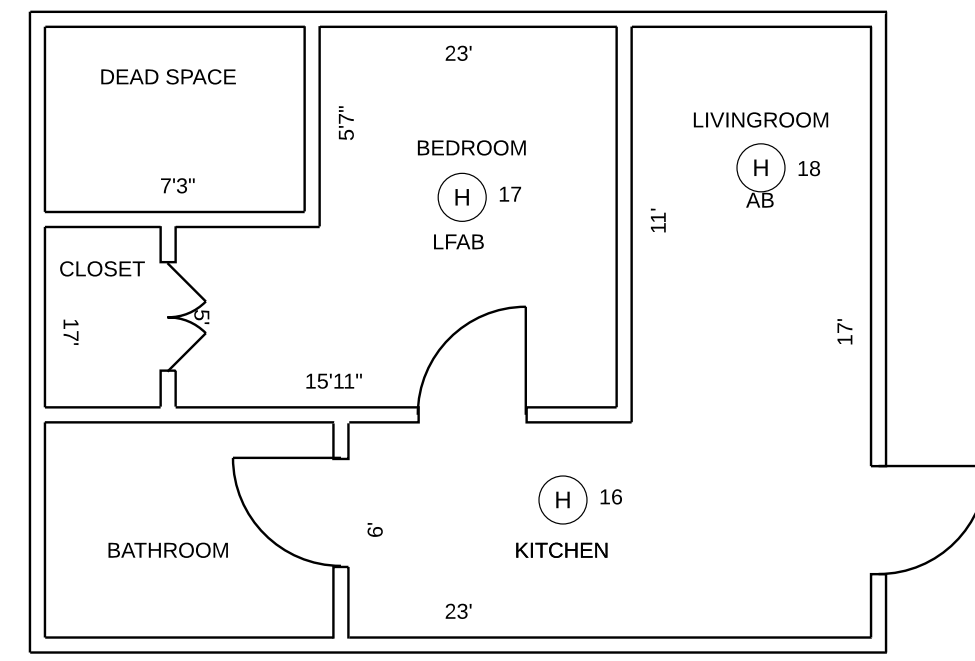
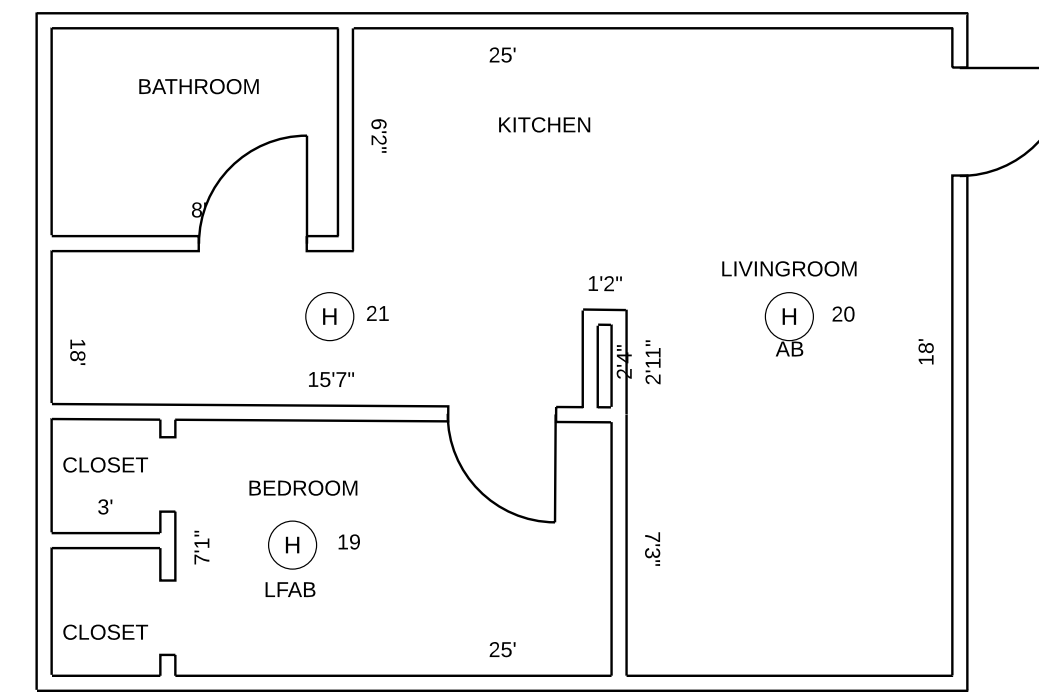


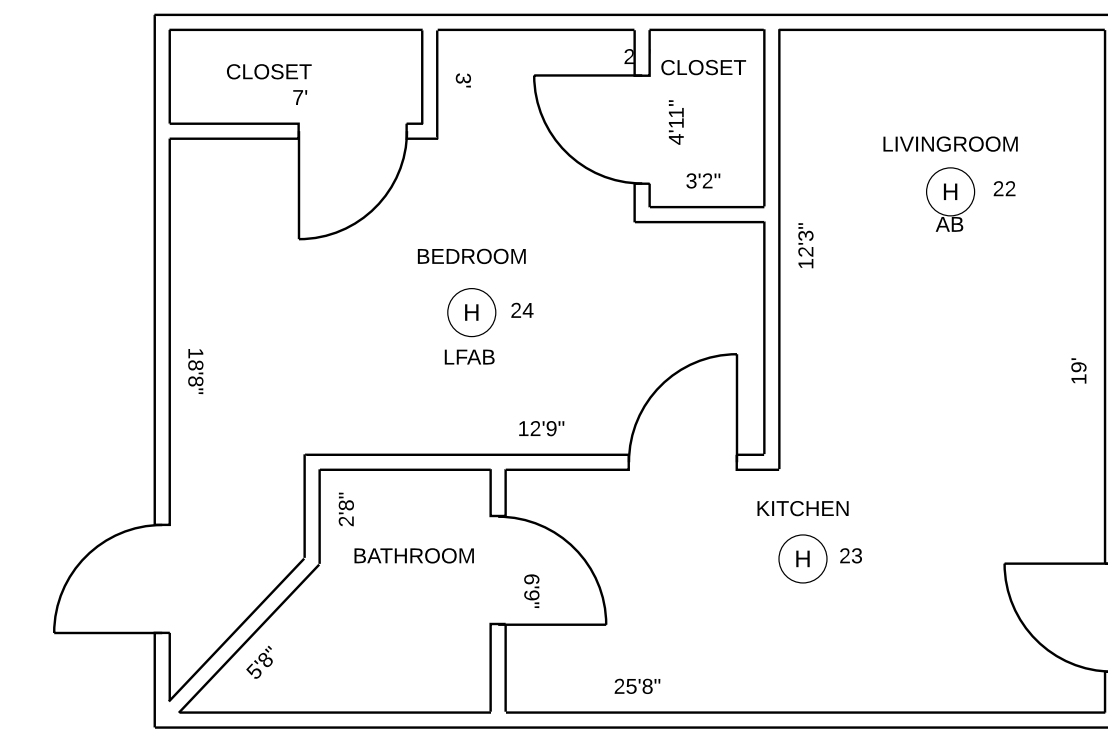
APARTMENT #1



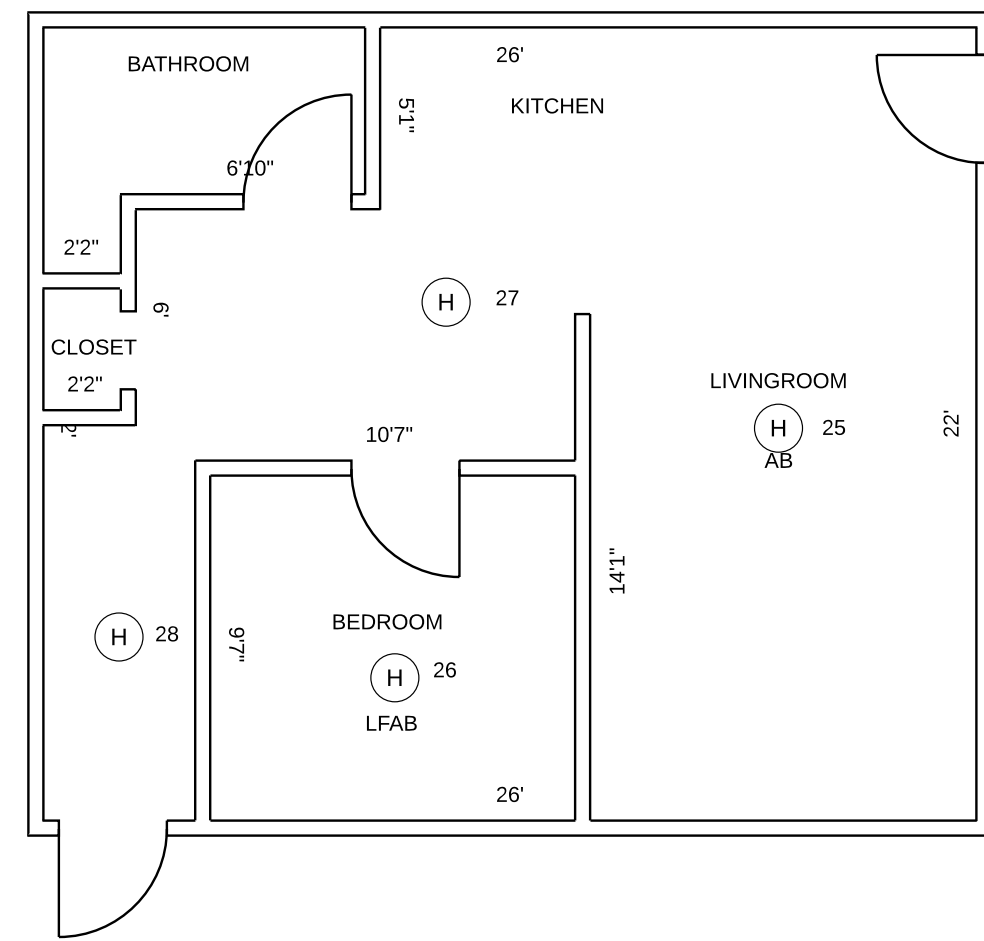
APARTMENT #2



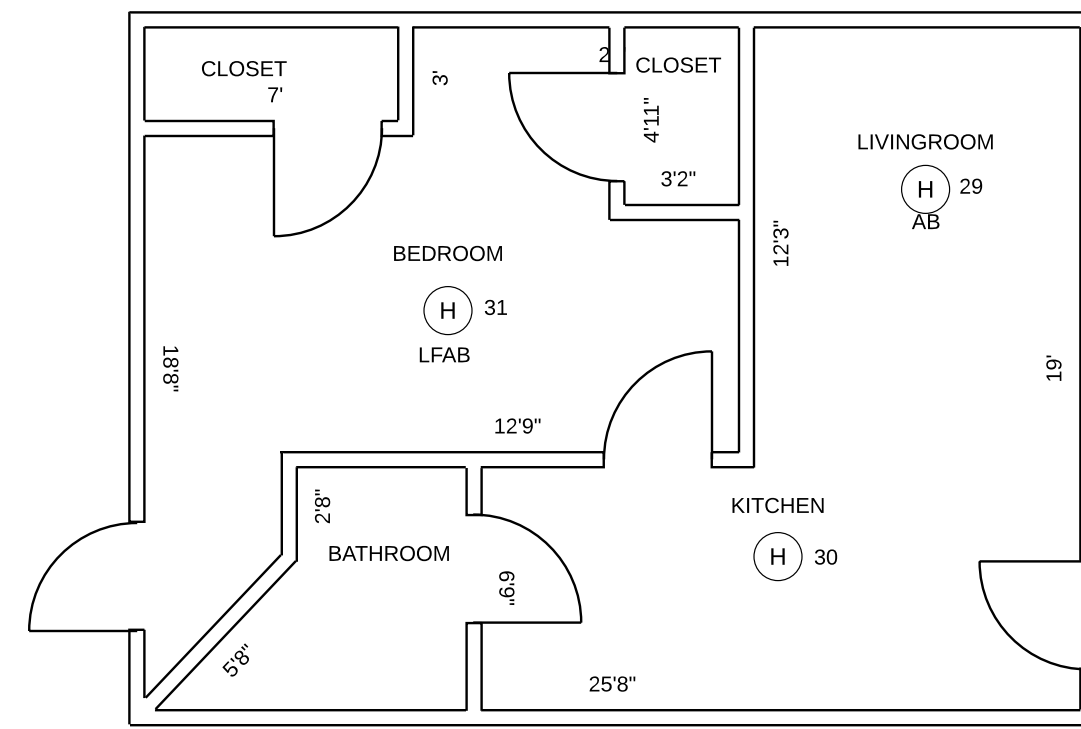
APARTMENT #3



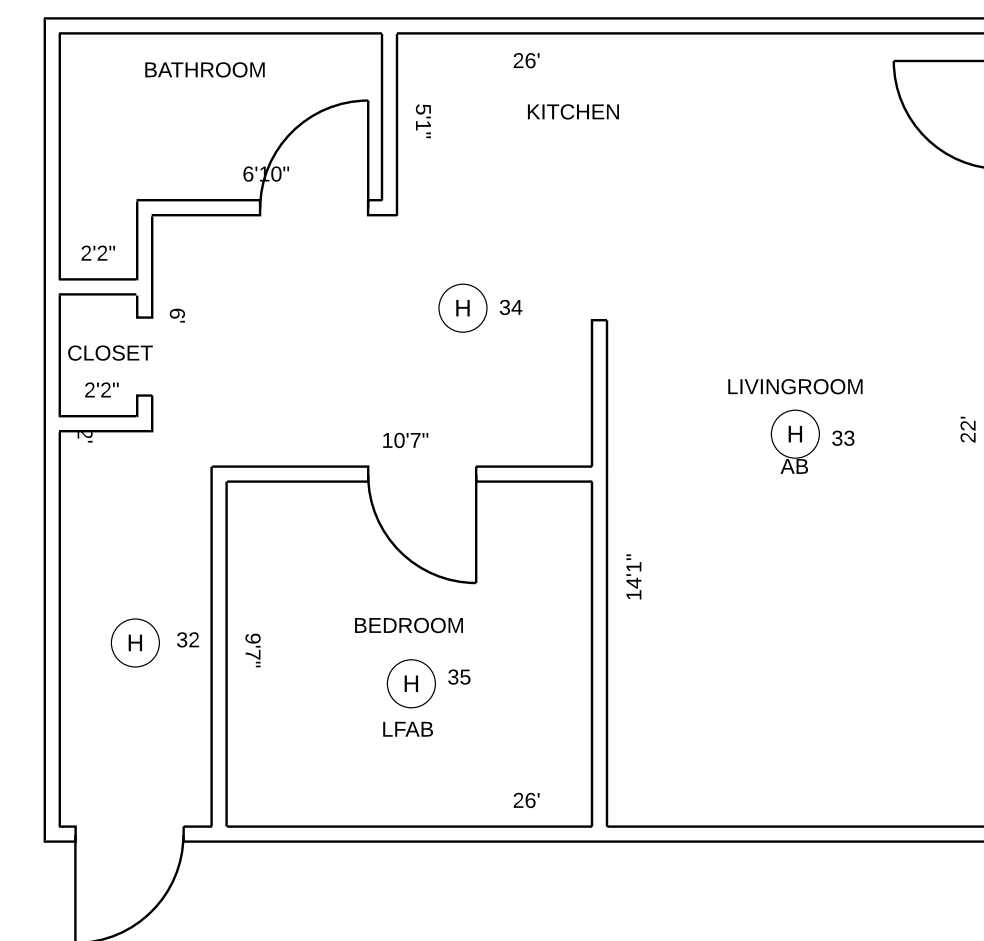
APARTMENT #4



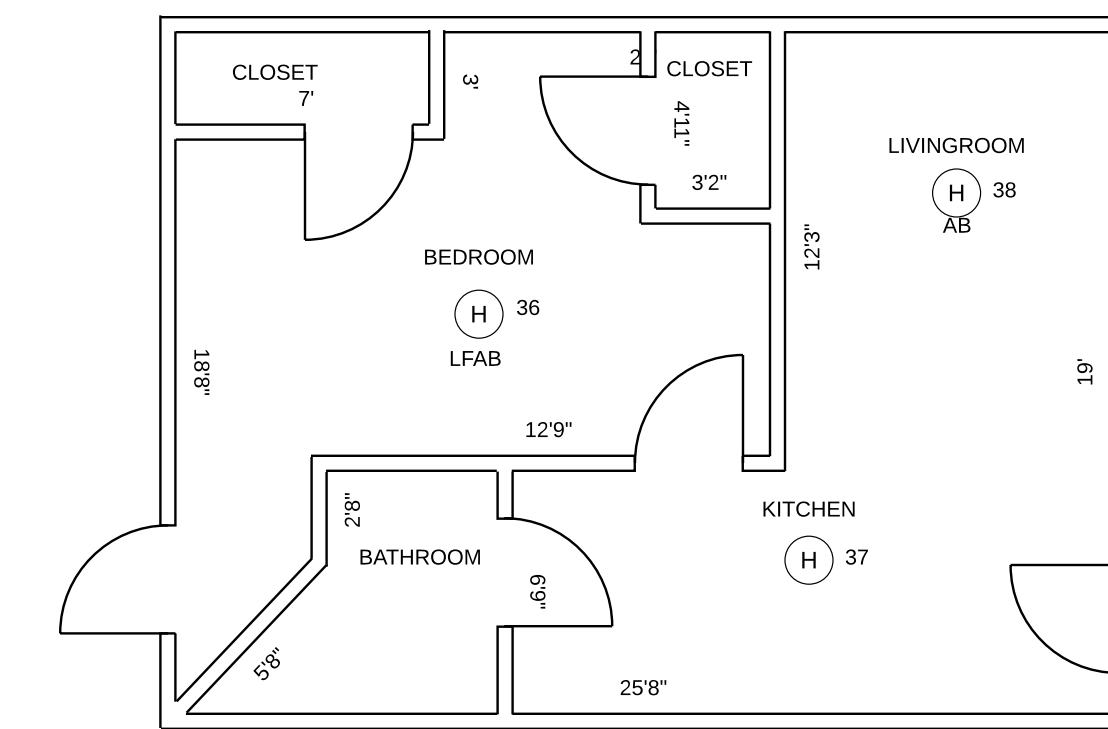
APARTMENT #5



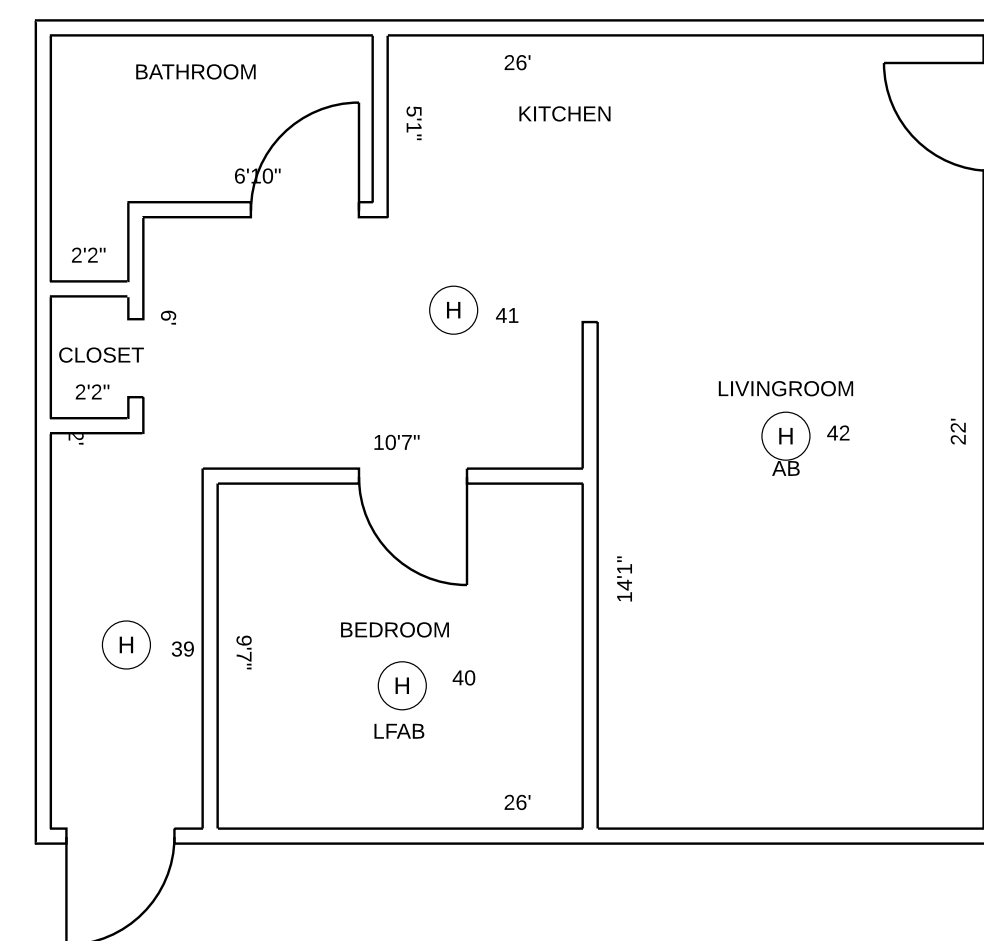
APARTMENT #6



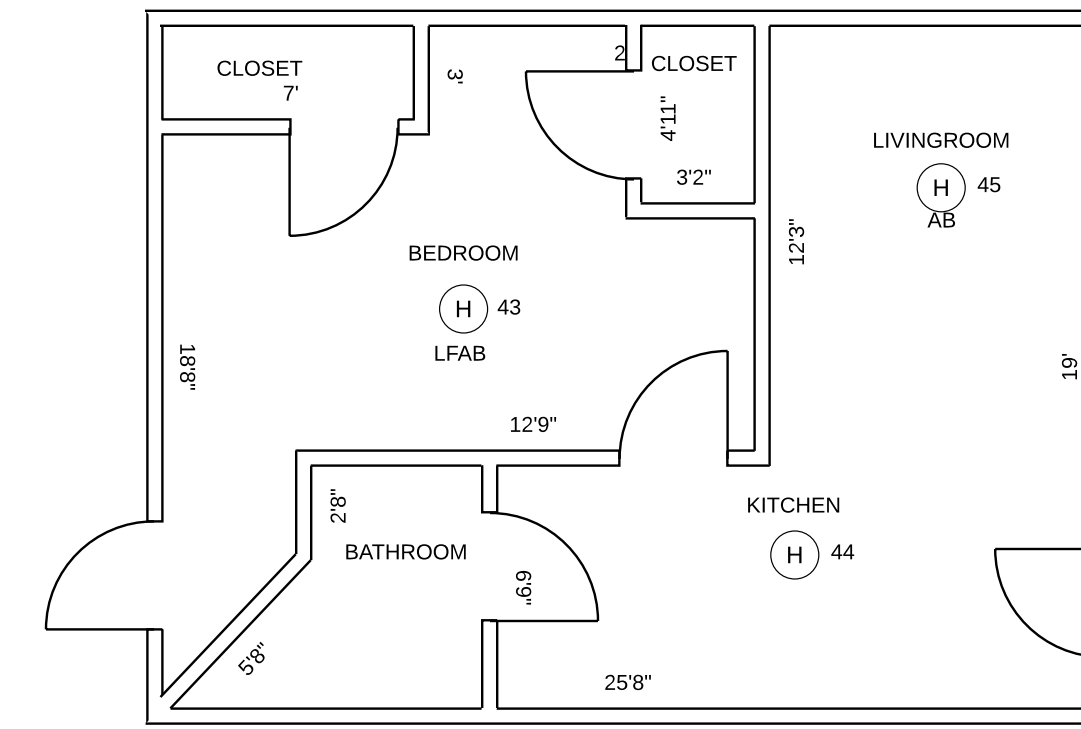
APARTMENT #7



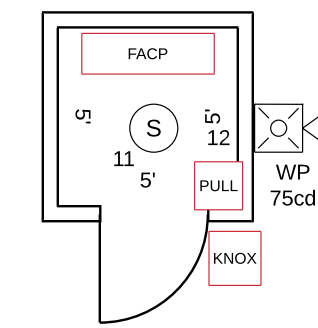
APARTMENT #8



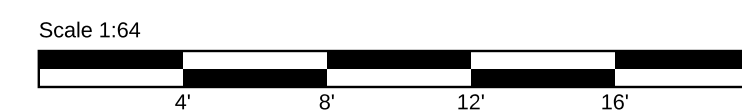
APARTMENT #9



APARTMENT #10



BACK RIGHT WATER CLOSET FACP ROOM



PROTECTION PROFESSIONALS  
 DATE 9/26/2020  
 REVISION: 1.0  
 8 ALDER STREET  
 PORTLAND MAINE  
 APARTMENT 1-10  
 FACP ROOM  
 SCALE: NS  
 SHEET: 1 OF 3  
 DESIGNER: PROTECTION PROFESSIONALS



CO	CO DETECTOR	IB	ISOLATOR BASE
RF	CO RF WIRELESS	H	HEAT DETECTOR
S	SMOKE RF WIRELESS	H	HEAT RF WIRELESS
SIM	SINGLE INPUT MODULE	15cd	STROBE
2 AB	SCOURER BASE	15cd	HORN STROBE
H	HEAT DETECTOR	15cd	WEATHER PROOF HORN STROBE
MODUL	DUAL MODULE	WP	MANUAL PULL STATION
PULL	MANUAL PULL STATION	M	MINI HORN
CO	CO DETECTOR	CL	CEILING MOUNTED HORN STROBE
MM	MICRO MODULE	15cd	SPEAKER STROBE
2	SMOKE DETECTOR	V	SPEAKER STROBE
RM	RELAY MODULE	TS	SPRINKLER TAMPER SWITCH
M	ISOLATOR MODULE	FS	SPRINKLER WATERFLOW SWITCH
LFAB	LOW FREQUENCY SCOURER BASE		

GENERAL NOTES  
 A) FIRE ALARM SYSTEM WIRING SHALL COMPLY WITH THE NATIONAL ELECTRIC CODE, APPLICABLE STATE AND LOCAL CODES AND SHALL BE COORDINATED WITH THE LOCAL AUTHORITY HAVING JURISDICTION.  
 B) CAUTION, DO NOT CONNECT ANY POWER TO THE CONTROL PANEL (BATTERIES OR 120VAC) UNTIL ALL FIELD WIRING HAS BEEN TESTED.  
 C) DO NOT INSTALL FIRE ALARM CONTROL PANEL OR ANY ADDRESSABLE DEVICES IN UNHEATED SPACE.  
 D) DO NOT INSTALL ANY AC CURRENT CARRYING CONDUCTORS CLOSE TO OR IN THE SAME RACEWAY WITH FIRE ALARM SYSTEM CONDUCTORS.  
 E) SOLID LINES REPRESENT CONNECTIONS MADE BY THE SYSTEM INSTALLER.  
 F) ALL RELAYS ARE SHOWN IN NORMAL SUPERVISORY CONDITION. ALL RELAYS ARE FORM "C" TYPE.

INSTALLATION NOTES  
 A) SMOKE DETECTORS SHALL NOT BE MOUNTED ANY CLOSER THAN 5' FROM ANY AIR DUCT OPENINGS.  
 B) ELEVATOR LOBBY SMOKE SHALL BE MOUNTED WITHIN 10' OF THE ELEVATOR DOOR.  
 C) MANUAL PULL STATIONS SHALL BE MOUNTED PER ADA REQUIREMENTS: 48" AFF OR 42" AFF TO COMPLY WITH SIDE/FRONT REACH REQUIREMENTS.  
 D) WALL MOUNTED HORN STROBES AND STROBES SHALL BE MOUNTED 5' FROM CEILING, OR 96" TO 80" AFF TO THE CENTER OF THE STROBE.  
 E) HORN STROBES AND STROBES SHALL BE MOUNTED 15" FROM THE CORNER OF THE WALL. IF THIS IS NOT POSSIBLE, DEVICE SHALL BE CENTERED ON THAT WALL.  
 F) CEILING MOUNTED HALLWAY DEVICES SHALL BE LOCATED IN A SYMMETRICAL MANNER DOWN THE CENTER OF THE HALLWAY WHEN POSSIBLE.



Reviewed for Code Compliance  
 Permitting and Inspections Department  
 Approved with Conditions  
 05/21/2020

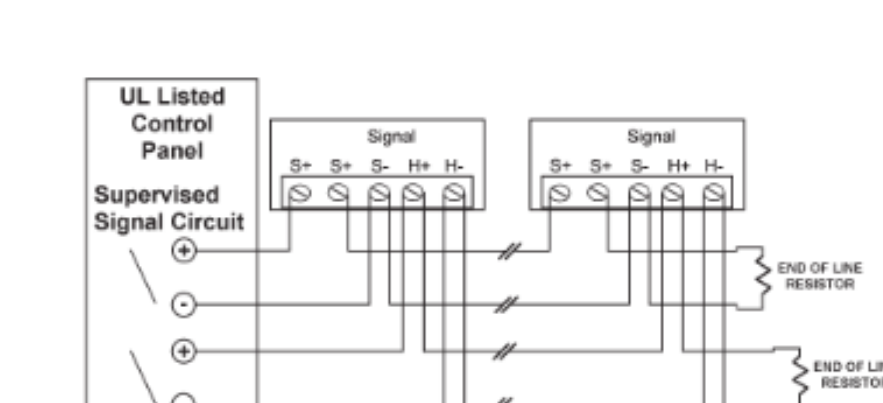
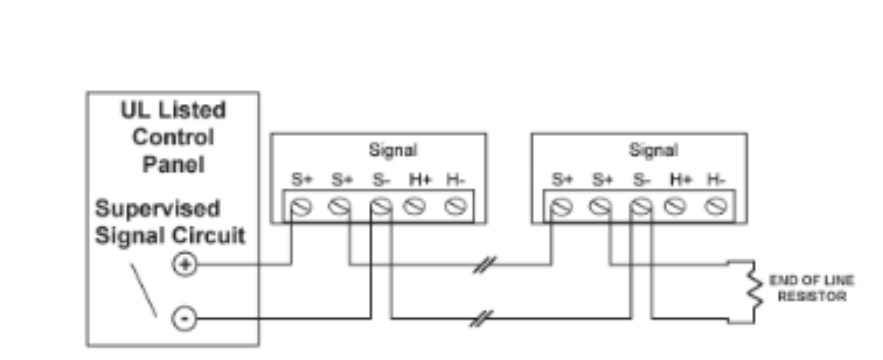
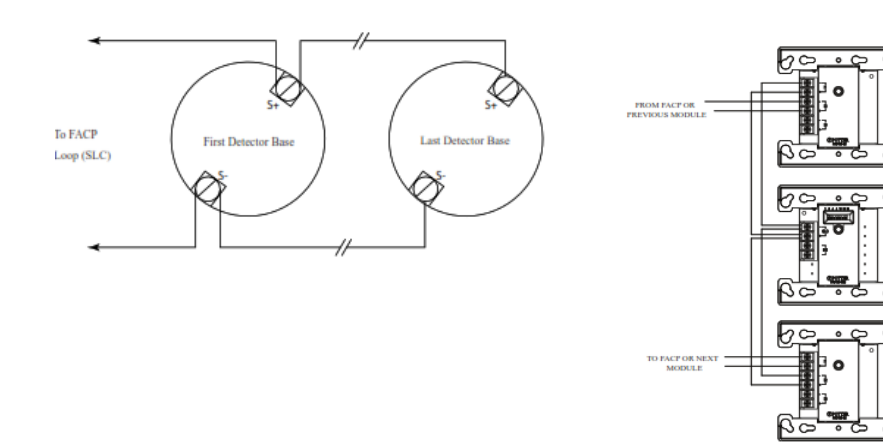
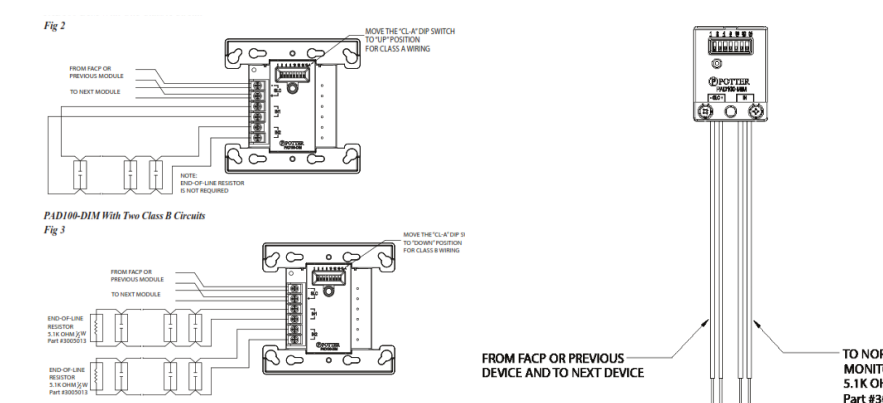
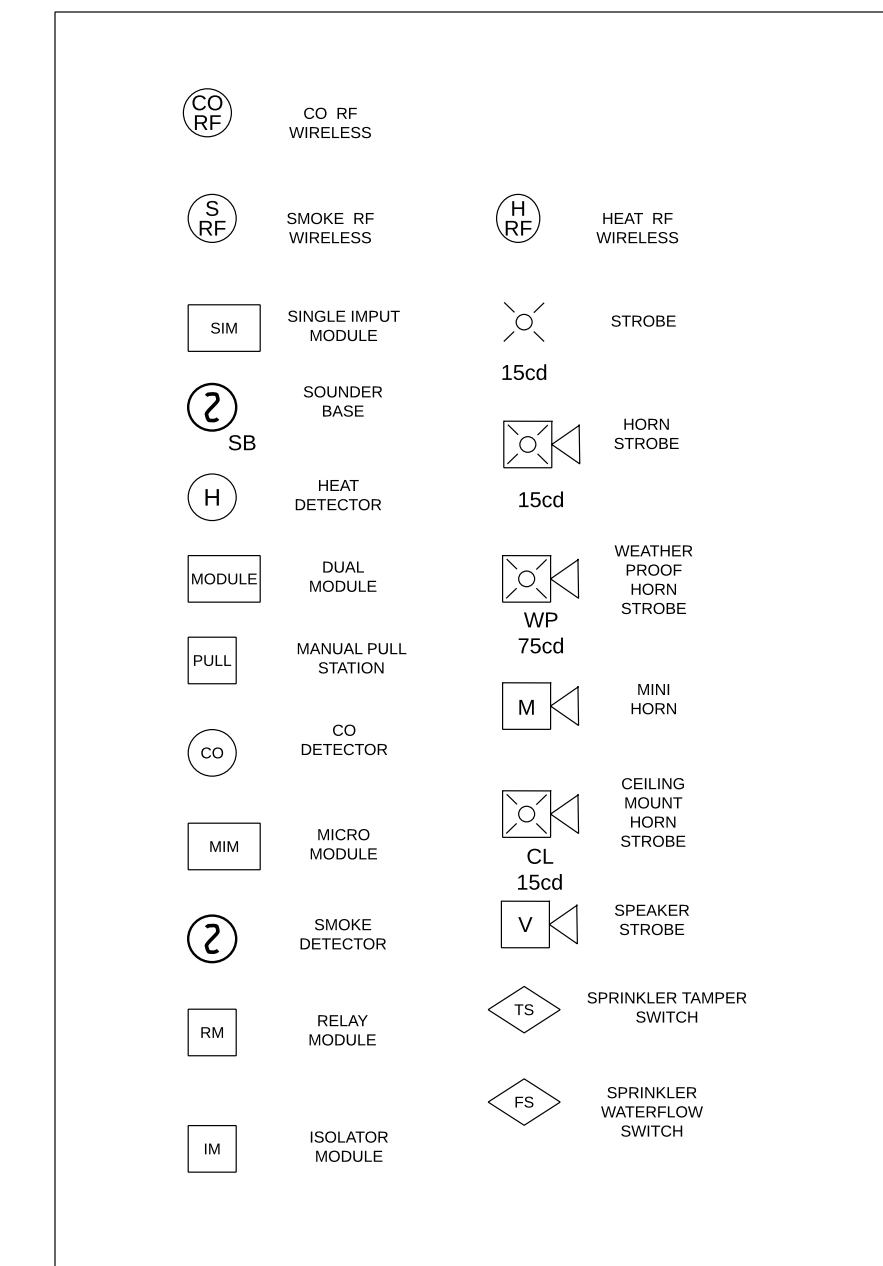
REPRODUCTION OF THIS DOCUMENT IS NOT PERMITTED WITHOUT THE PRIOR WRITTEN CONSENT OF PROTECTION PROFESSIONALS



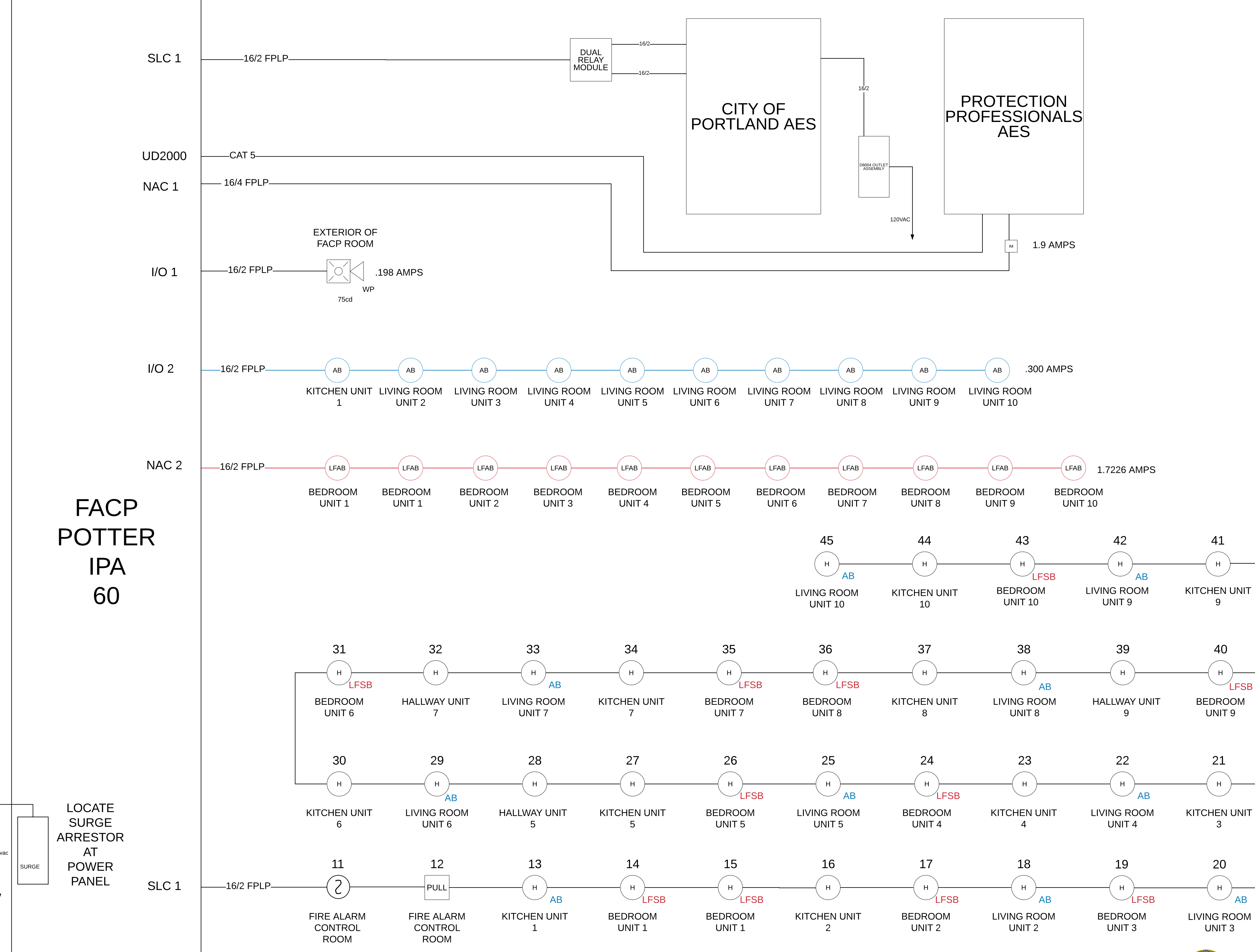


GENERAL NOTES  
 A) FIRE ALARM SYSTEM WIRING SHALL COMPLY WITH THE NATIONAL ELECTRIC CODE, APPLICABLE STATE AND LOCAL CODES AND SHALL BE COORDINATED WITH THE LOCAL AUTHORITY HAVING JURISDICTION.  
 B.) CAUTION: DO NOT CONNECT ANY POWER TO THE CONTROL PANEL (BATTERIES OR 120VAC) UNTIL ALL FIELD WIRING HAS BEEN TESTED.  
 C.) DO NOT INSTALL FIRE ALARM CONTROL PANEL OR ANY ADDRESSABLE DEVICES IN UNHEATED SPACE.  
 D.) DO NOT INSTALL ANY AC CURRENT CARRYING CONDUCTORS CLOSE TO OR IN THE SAME RACEWAY WITH FIRE ALARM SYSTEM CONDUCTORS.  
 E.) SOLID LINES REPRESENT CONNECTIONS MADE BY THE SYSTEM INSTALLER.  
 F.) ALL RELAYS ARE SHOWN IN NORMAL SUPERVISORY CONDITION. ALL RELAYS ARE FORM "C" TYPE.

INSTALLATION NOTES  
 A.) SMOKE DETECTORS SHALL NOT BE MOUNTED ANY CLOSER THAN 3' FROM ANY AIR DUCT OPENINGS.  
 B.) ELEVATOR LOBBY SMOKE SHALL BE MOUNTED WITHIN 10' OF THE ELEVATOR DOOR.  
 C.) MANUAL PULL STATIONS SHALL BE MOUNTED PER ADA REQUIREMENTS: 48" AFF OR 42" AFF TO COMPLY WITH SIDEFRONT REACH REQUIREMENTS.  
 D.) WALL MOUNTED HORN STROBES AND STROBES SHALL BE MOUNTED 6" FROM CEILING, OR 96" TO 80" AFF TO THE CENTER OF THE STROBE.  
 E.) HORN STROBES AND STROBES SHALL BE MOUNTED 15" FROM THE CORNER OF THE WALL. IF THIS IS NOT POSSIBLE, DEVICE SHALL BE CENTERED ON THAT WALL.  
 F.) CEILING MOUNTED HALLWAY DEVICES SHALL BE LOCATED IN A SYMMETRICAL MANNER DOWN THE CENTER OF THE HALLWAY WHEN POSSIBLE.

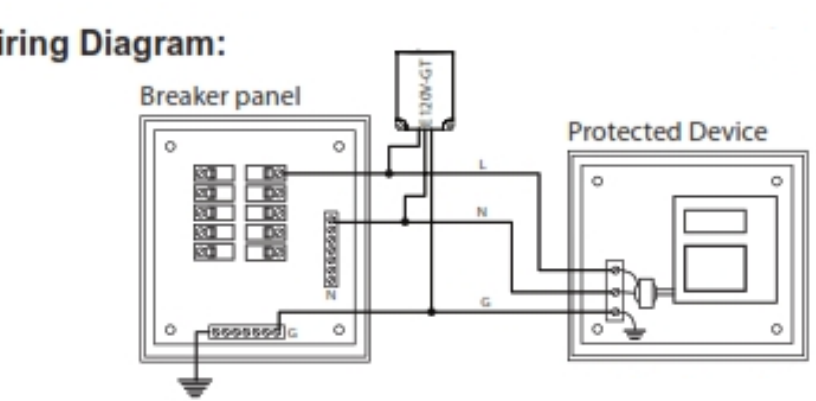


Reviewed for Code Compliance  
 Permitting and Inspections Department  
 Approved with Conditions  
 05/21/2020



FACP  
 POTTER  
 IPA  
 60

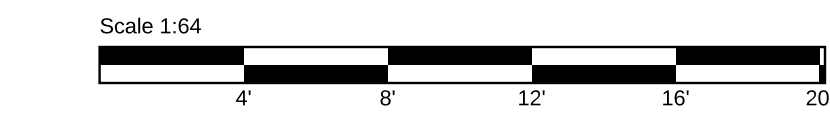
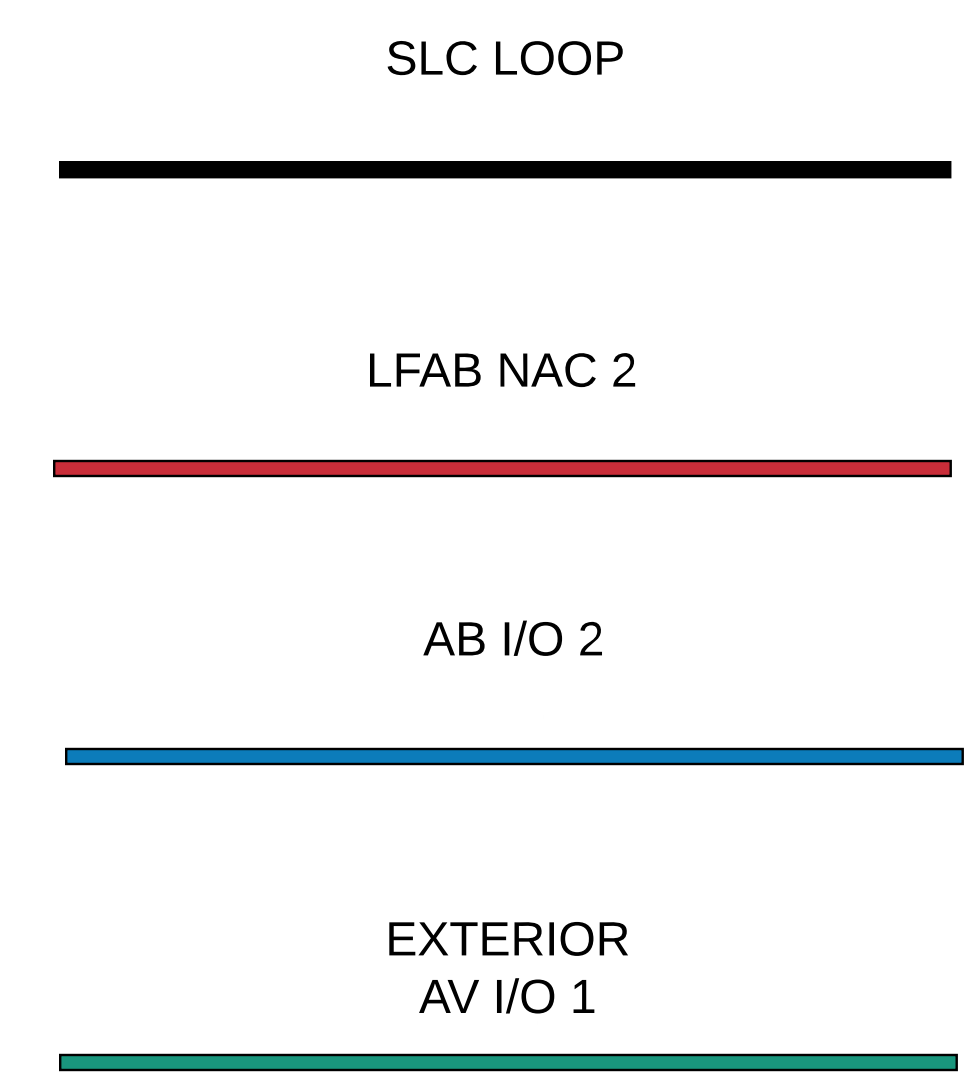
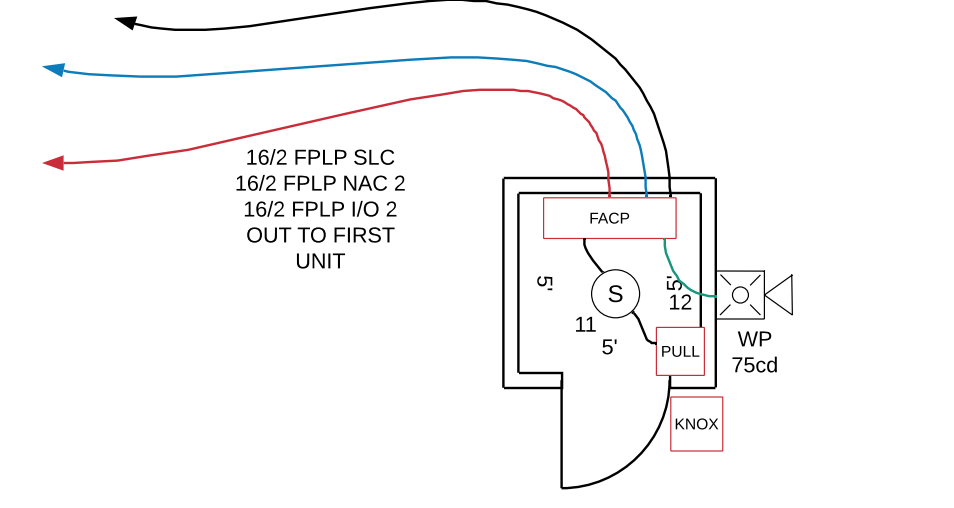
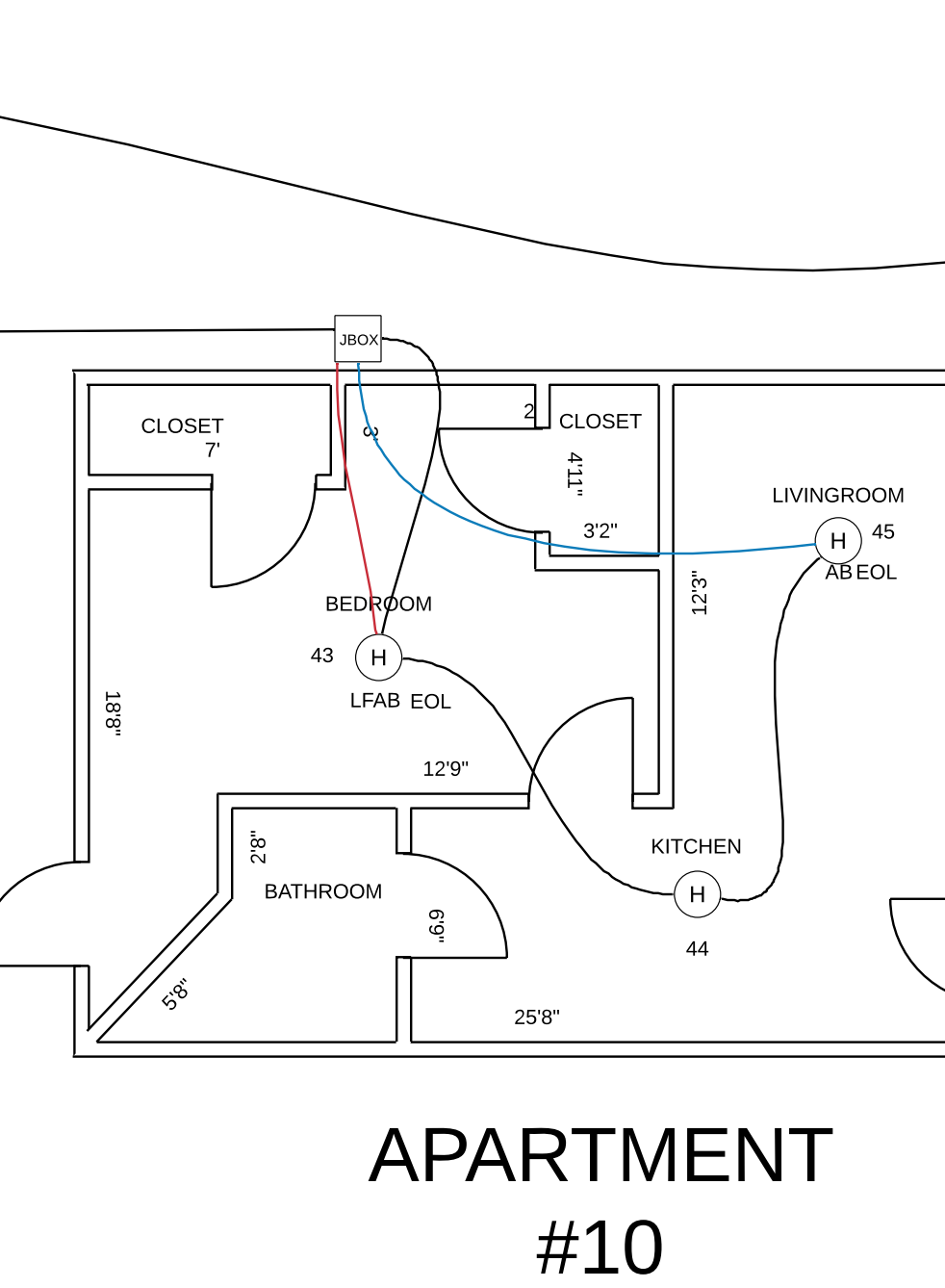
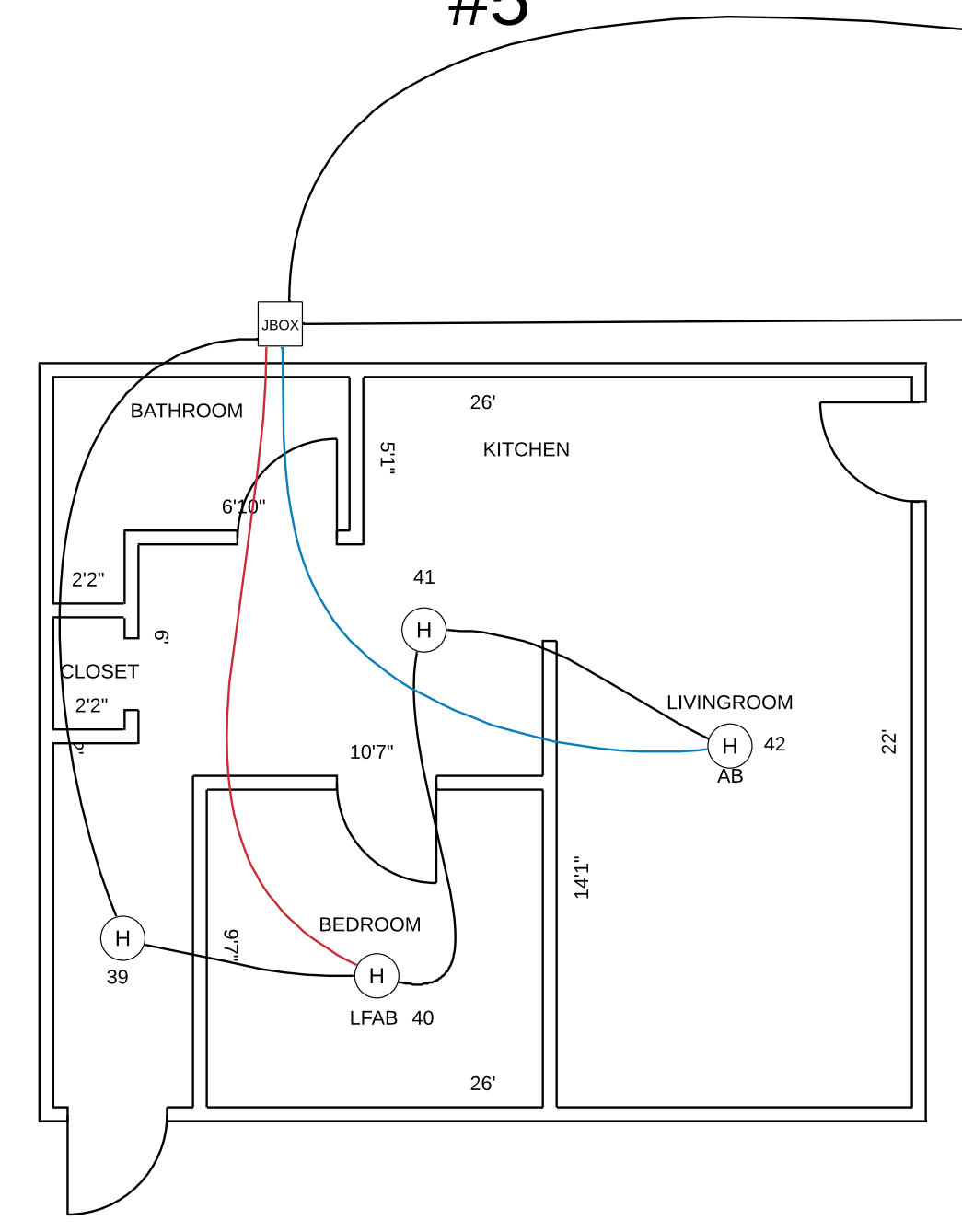
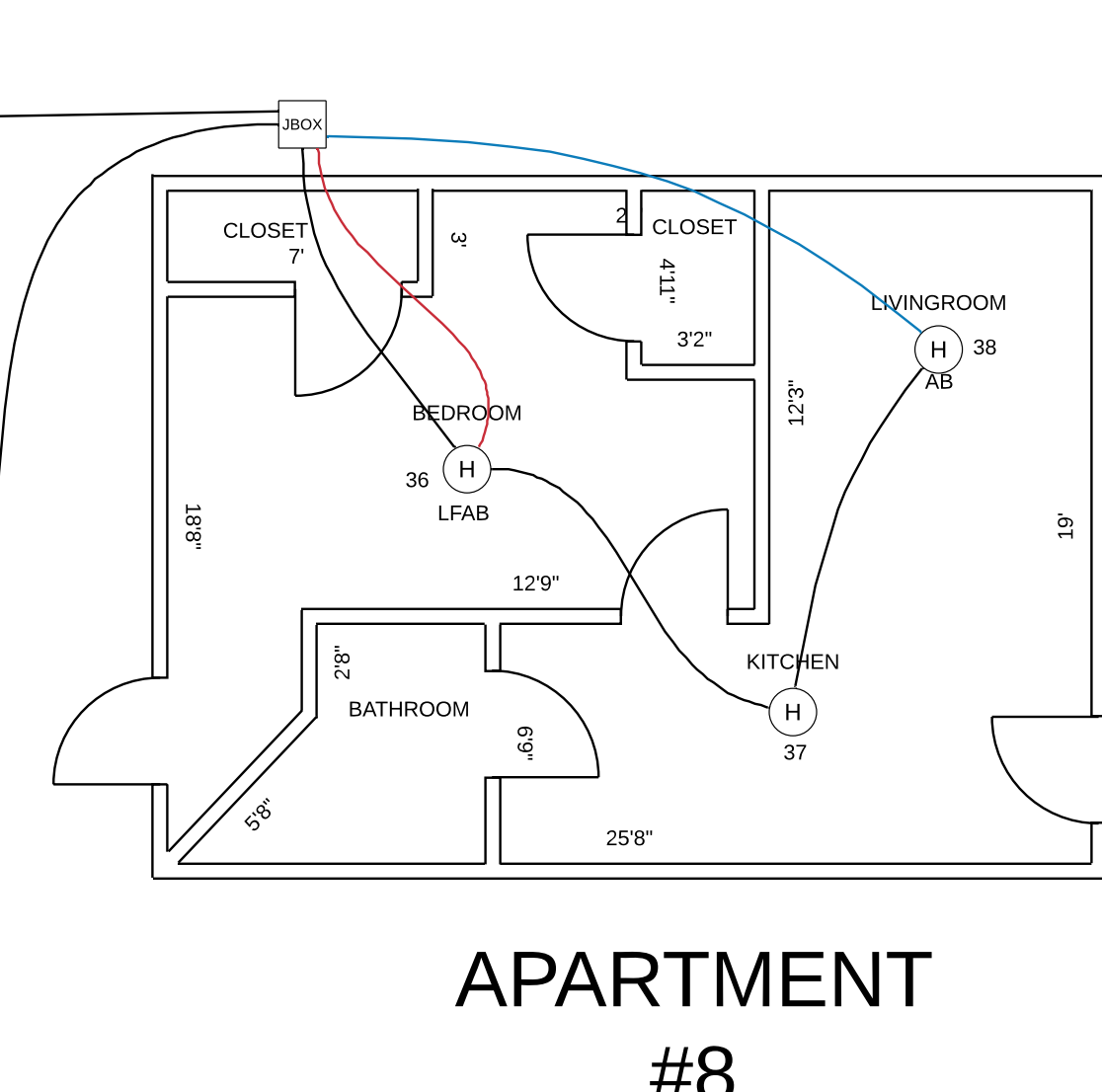
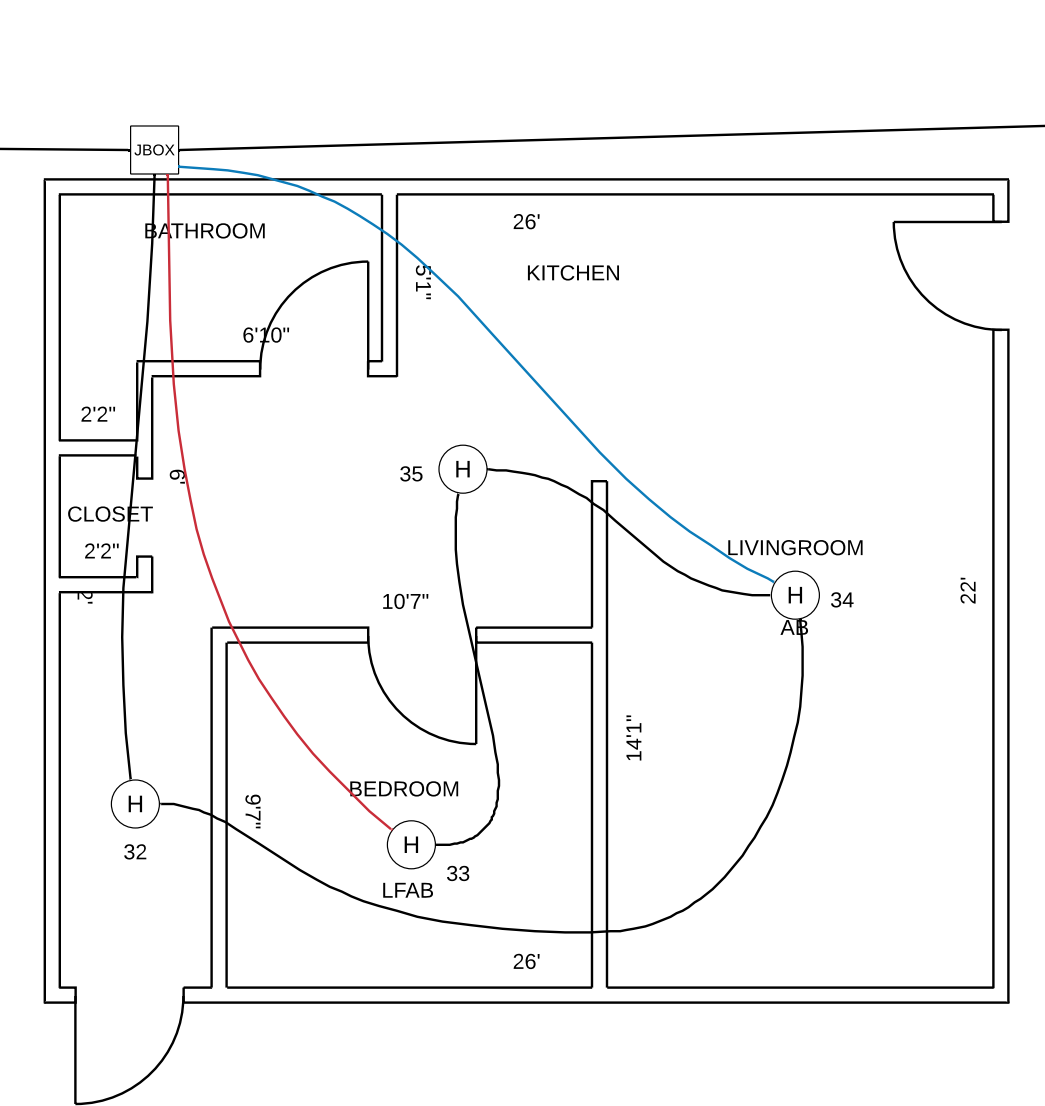
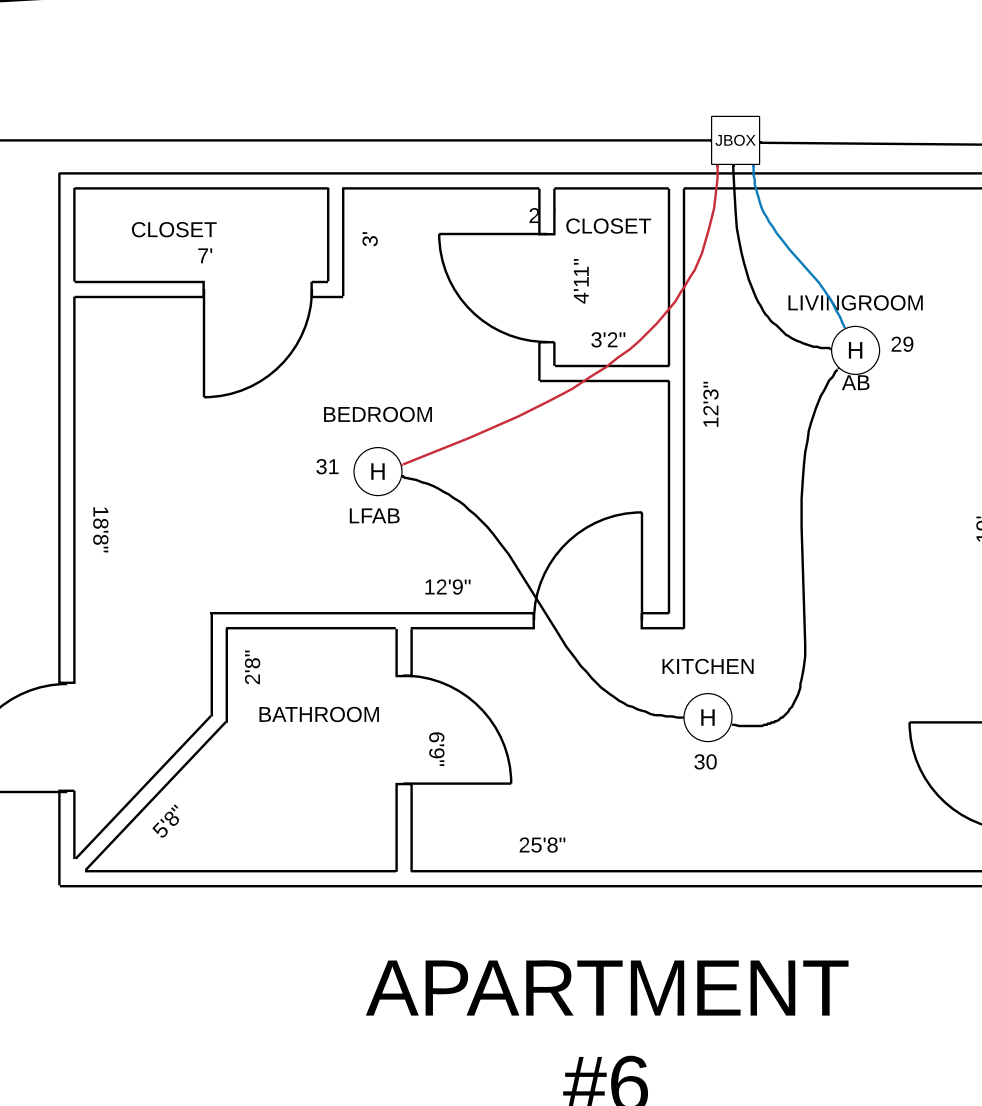
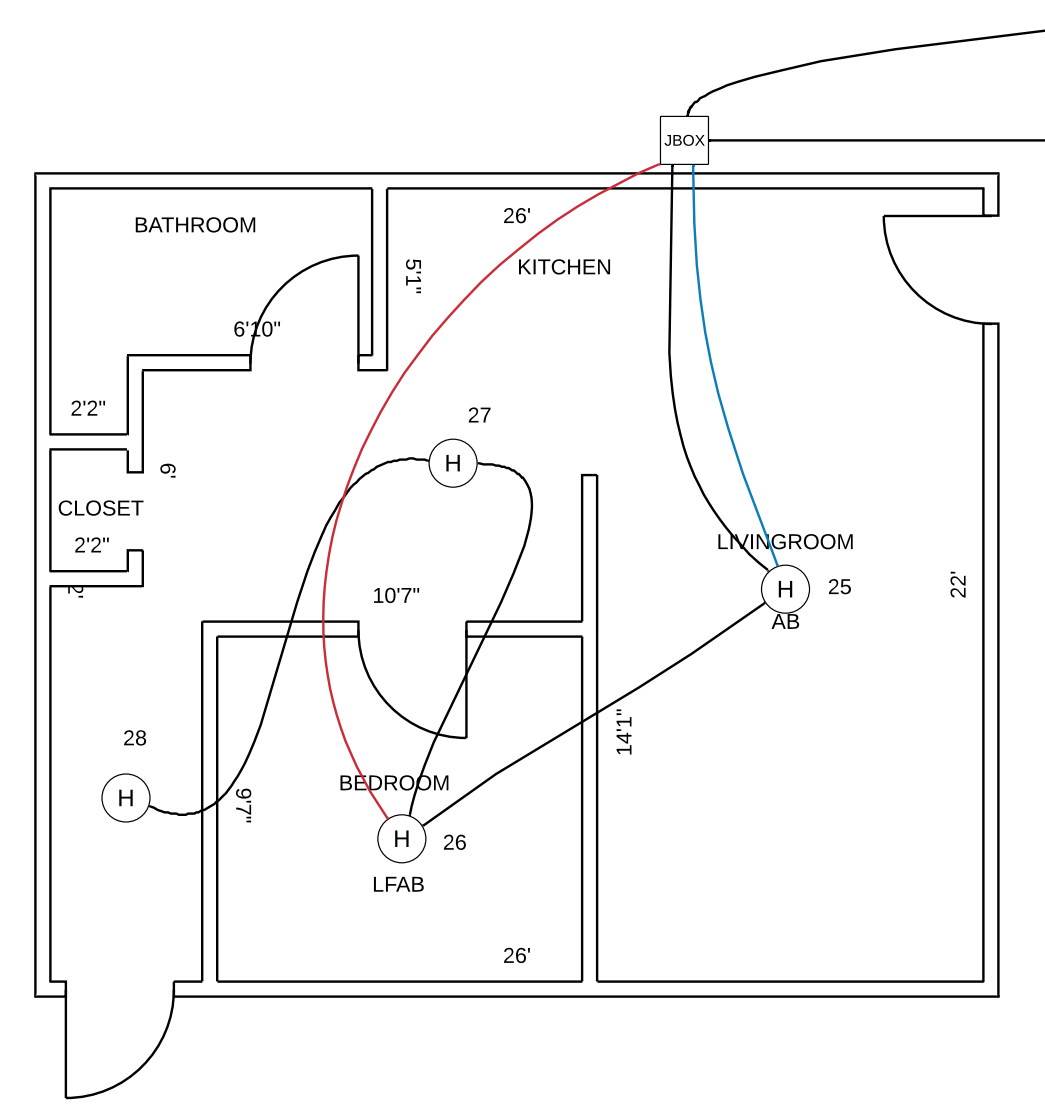
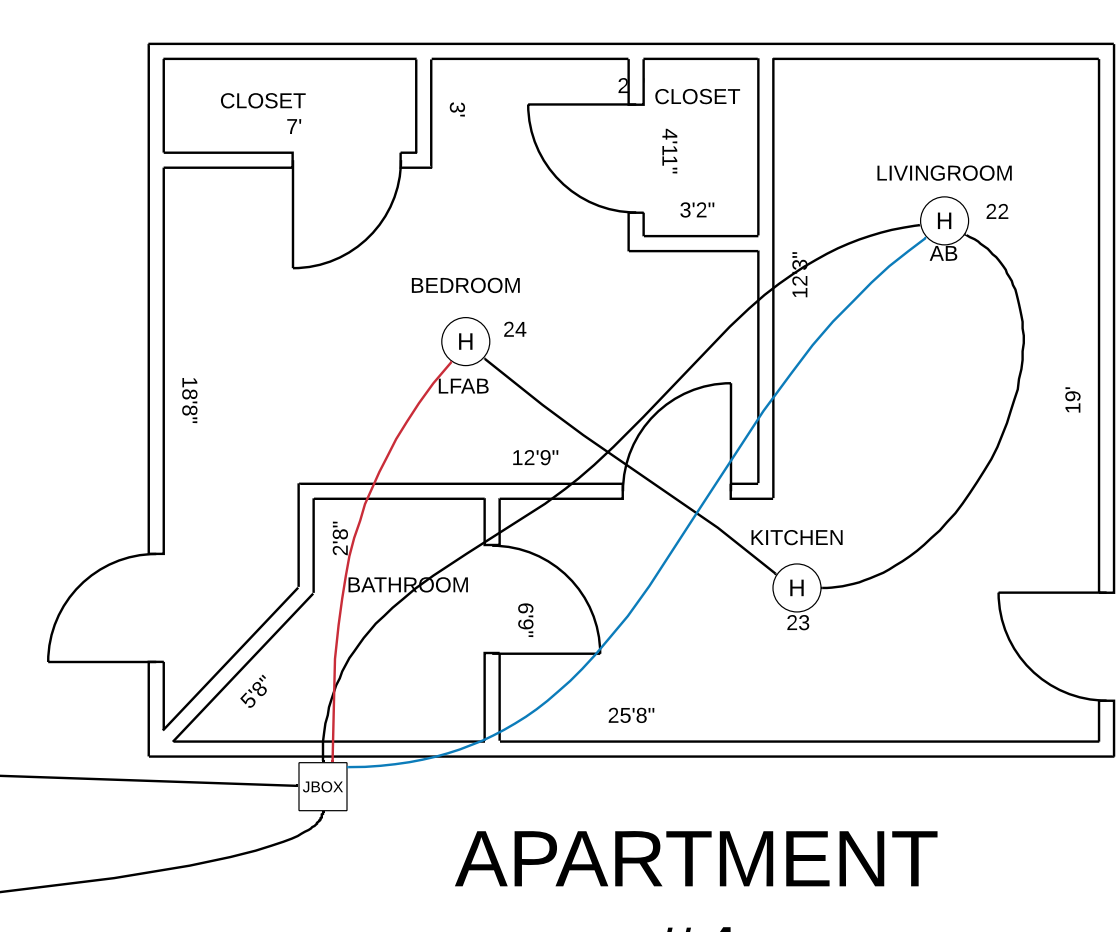
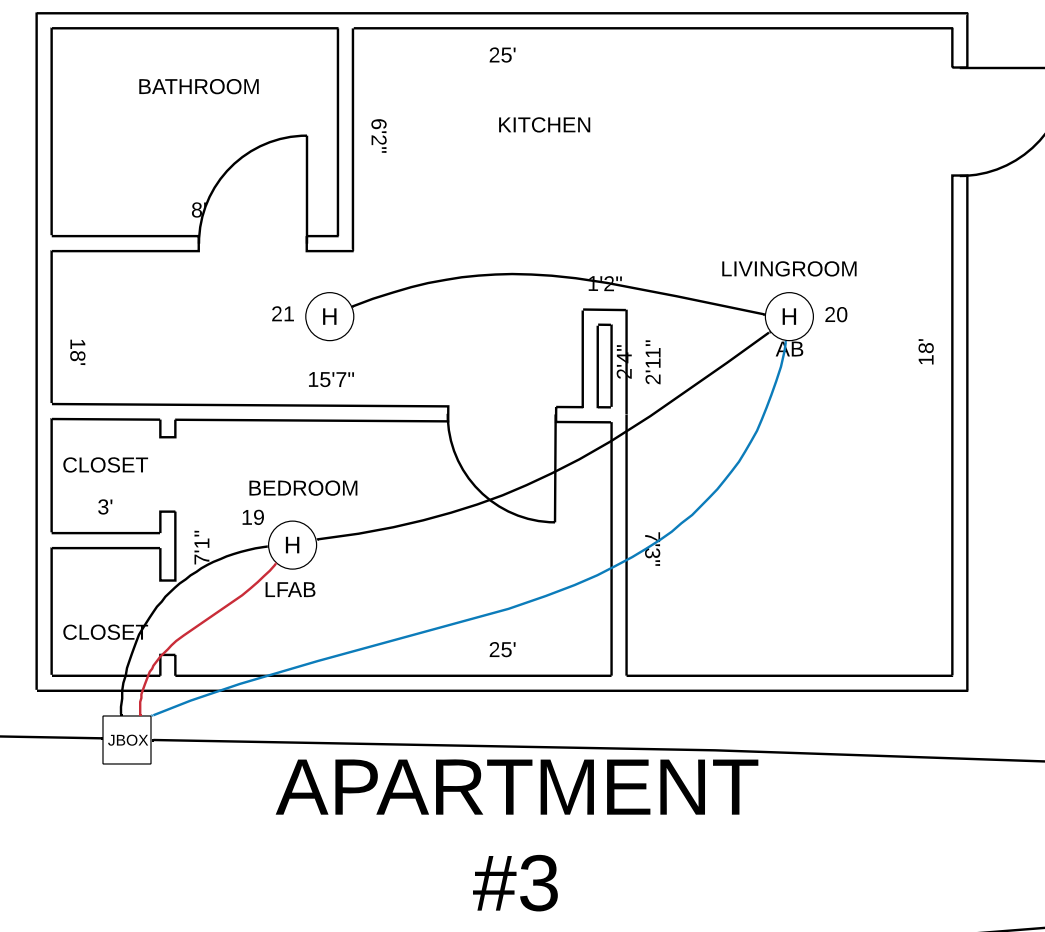
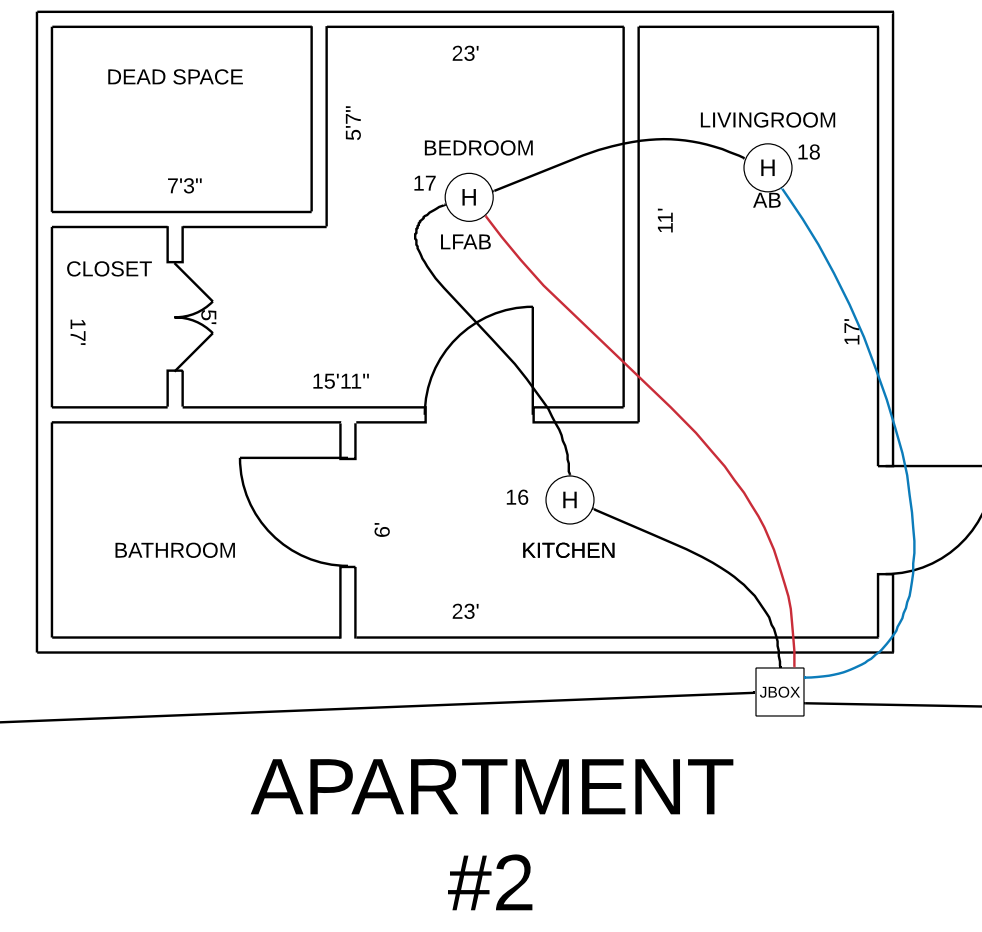
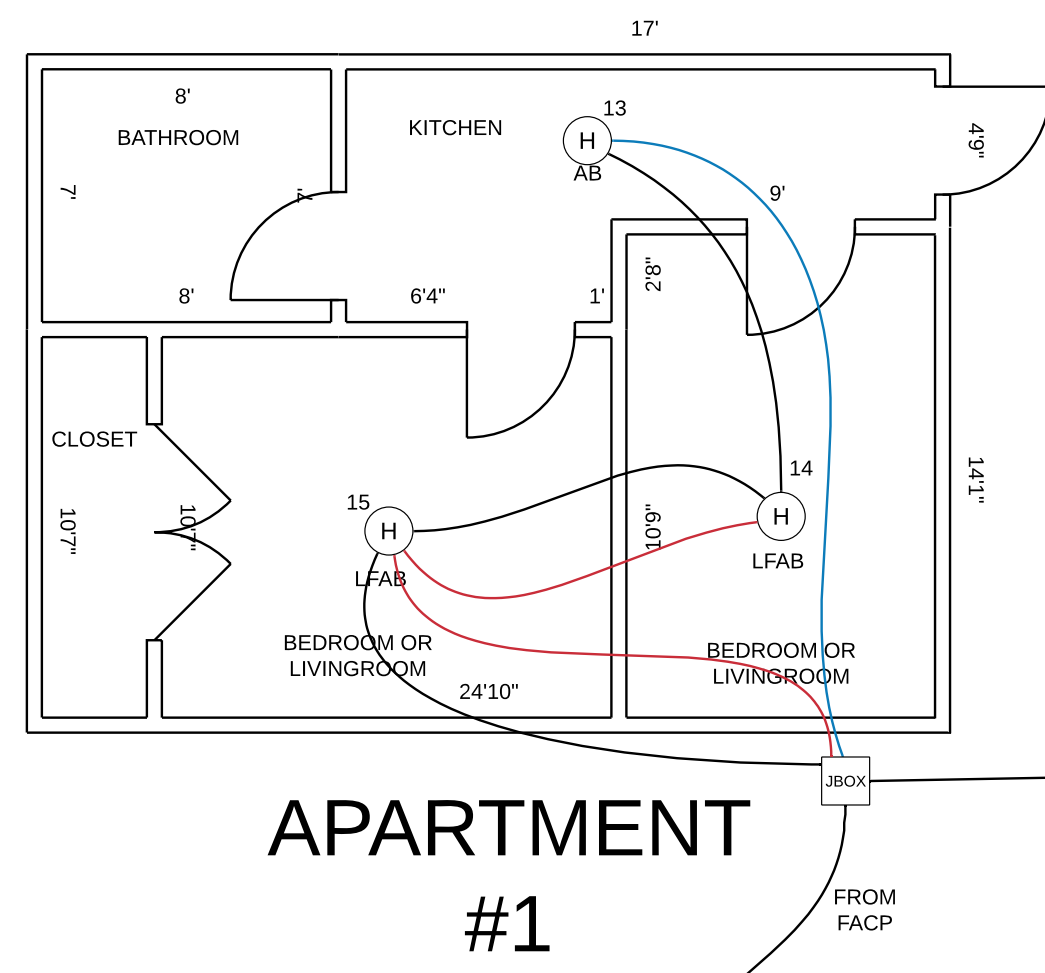
LOCATE  
 SURGE  
 ARRESTOR  
 AT  
 POWER  
 PANEL



Wiring Diagram:  
 Breaker panel  
 Protected Device



CO RF WIRELESS	ISOLATOR BASE IB
SMOKE RF WIRELESS	HEAT RF WIRELESS
SINGLE INPUT MODULE	STROBE
SOUNDER BASE	HORN STROBE
HEAT DETECTOR	15cd
DUAL MODULE	WEATHER PROOF HORN STROBE
MANUAL PULL STATION	WP 75cd
CO DETECTOR	MINI HORN
MICRO MODULE	CEILING MOUNTED HORN STROBE
SMOKE DETECTOR	15cd
RELAY MODULE	SPEAKER STROBE
ISOLATOR MODULE	SPRINKLER TAMPER SWITCH
LFAB LOW FREQUENCY SOUNDER BASE	SPRINKLER WATERFLOW SWITCH



GENERAL NOTES  
 A) FIRE ALARM SYSTEM WIRING SHALL COMPLY WITH THE NATIONAL ELECTRIC CODE, APPLICABLE STATE AND LOCAL CODES AND SHALL BE COORDINATED WITH THE LOCAL AUTHORITY HAVING JURISDICTION.  
 B) CAUTION, DO NOT CONNECT ANY POWER TO THE CONTROL PANEL (BATTERIES OR 120VAC) UNTIL ALL FIELD WIRING HAS BEEN TESTED.  
 C) DO NOT INSTALL FIRE ALARM CONTROL PANEL OR ANY ADDRESSABLE DEVICES IN UNHEATED SPACE.  
 D) DO NOT INSTALL ANY AC CURRENT CARRYING CONDUCTORS CLOSE TO OR IN THE SAME RACEWAY WITH FIRE ALARM SYSTEM CONDUCTORS.  
 E) SOLID LINES REPRESENT CONNECTIONS MADE BY THE SYSTEM INSTALLER.  
 F) ALL RELAYS ARE SHOWN IN NORMAL SUPERVISORY CONDITION. ALL RELAYS ARE FORM "C" TYPE.

INSTALLATION NOTES  
 A) SMOKE DETECTORS SHALL NOT BE MOUNTED ANY CLOSER THAN 5' FROM ANY AIR DUCT OPENINGS.  
 B) ELEVATOR LOBBY SMOKE SHALL BE MOUNTED WITHIN 10' OF THE ELEVATOR DOOR.  
 C) MANUAL PULL STATIONS SHALL BE MOUNTED PER ADA REQUIREMENTS: 48" AFF OR 42" AFF TO COMPLY WITH SIDE/FRONT REACH REQUIREMENTS.  
 D) WALL MOUNTED HORN STROBES AND STROBES SHALL BE MOUNTED 5' FROM CEILING, OR 96" TO 80" AFF TO THE CENTER OF THE STROBE.  
 E) HORN STROBES AND STROBES SHALL BE MOUNTED 15" FROM THE CORNER OF THE WALL, IF THIS IS NOT POSSIBLE, DEVICE SHALL BE CENTERED ON THAT WALL.  
 F) CEILING MOUNTED HALLWAY DEVICES SHALL BE LOCATED IN A SYMMETRICAL MANNER DOWN THE CENTER OF THE HALLWAY WHEN POSSIBLE.



Reviewed for Code Compliance  
 Permitting and Inspections Department  
 Approved with Conditions

05/21/2020

REPRODUCTION OF THIS DOCUMENT IS NOT PERMITTED WITHOUT THE PRIOR WRITTEN CONSENT OF PROTECTION PROFESSIONALS

