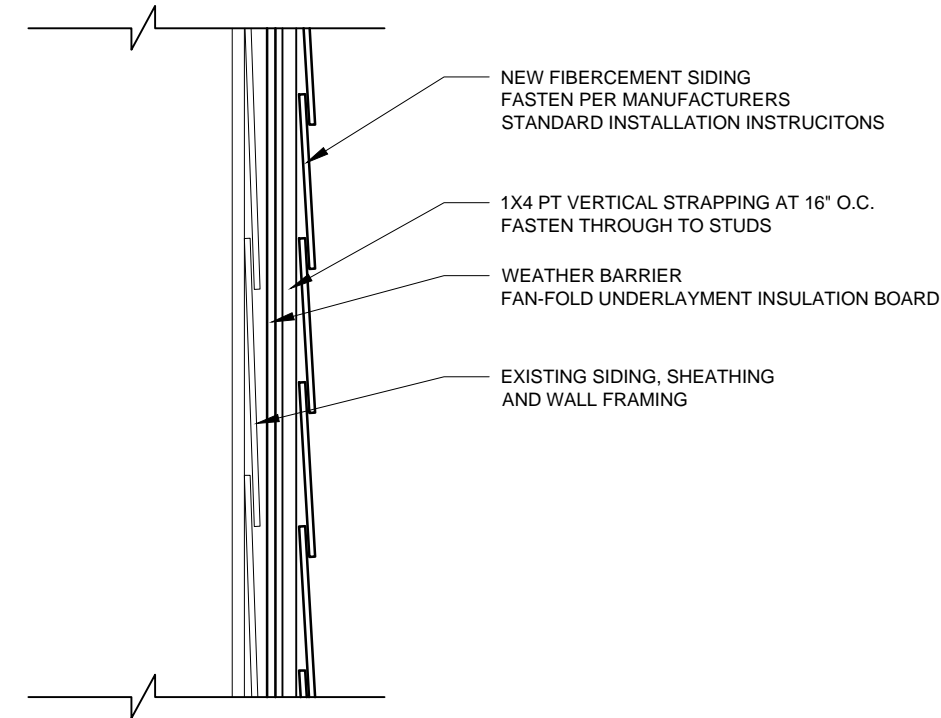


# 12 ALDER STREET PORTLAND, ME

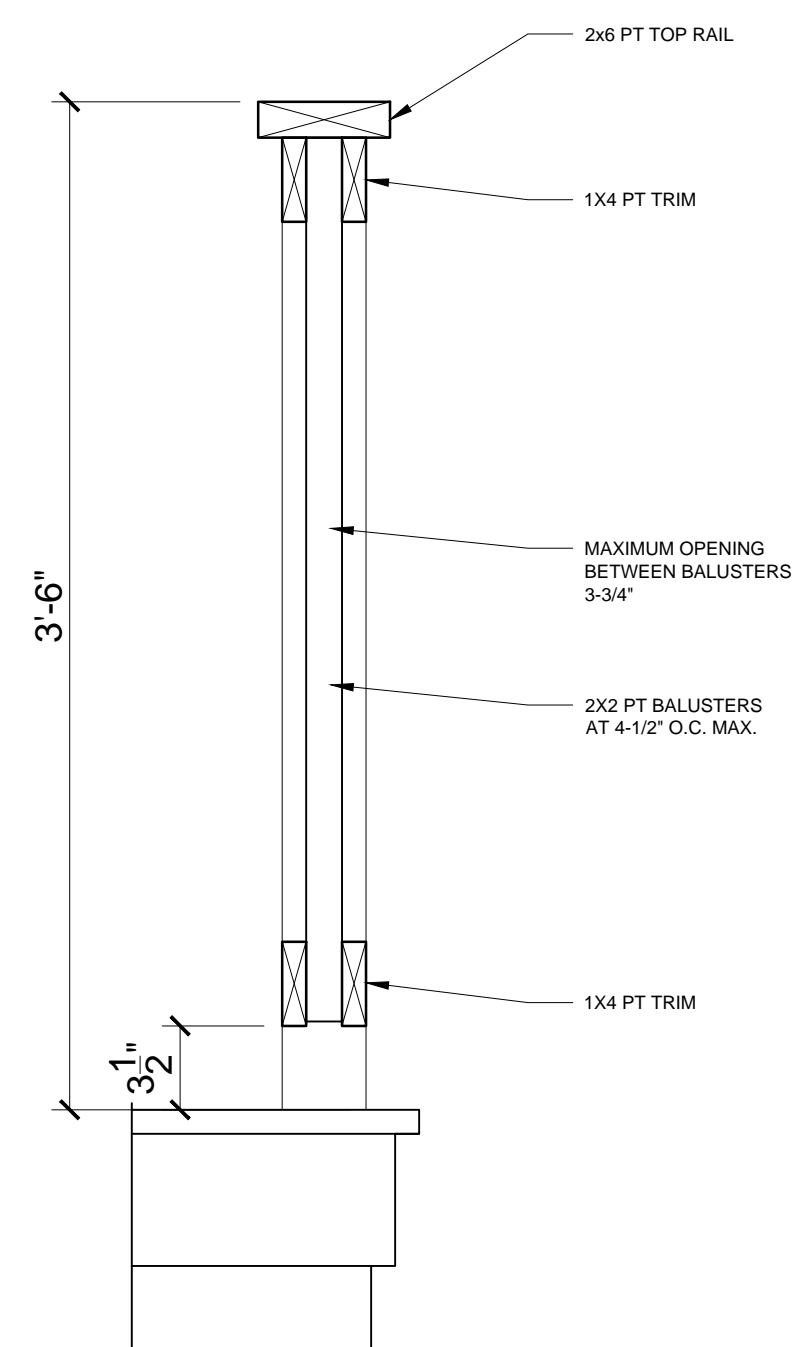
SEPTEMBER 6, 2017

UPDATED MARCH 26, 2018

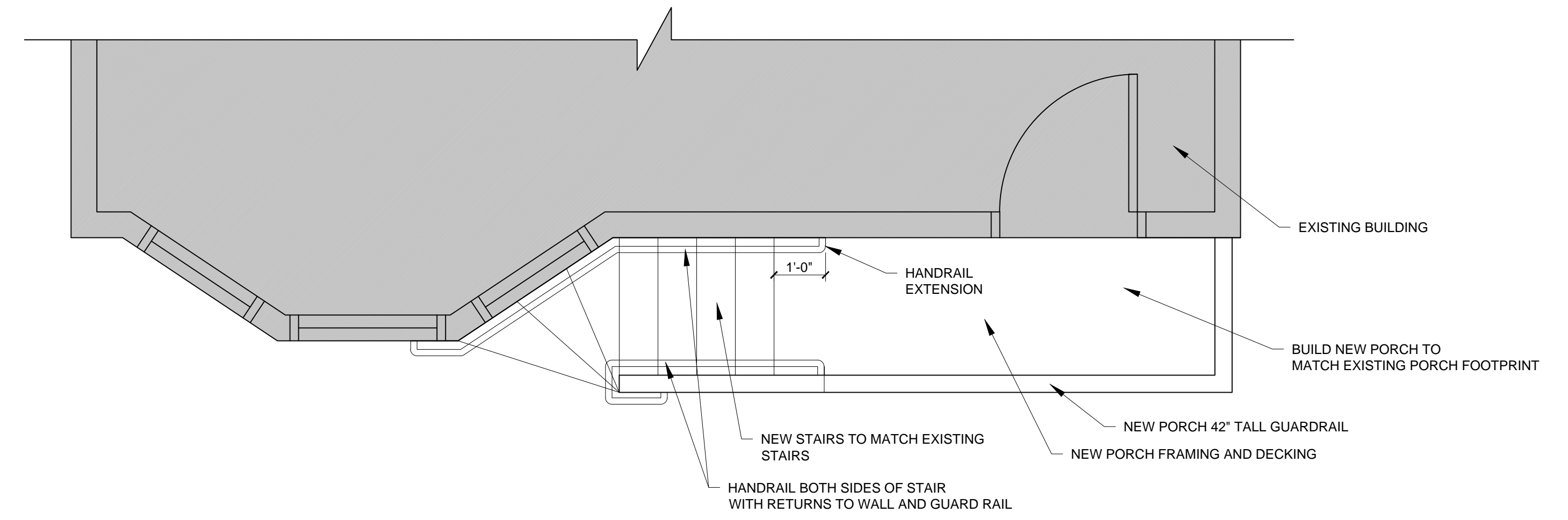
REMOVAL AND / OR COVERING, CLEAN UP AND DISPOSAL OF EXISTING ASBESTOS SIDING MUST BE IN COMPLIANCE WITH MAINE DEPARTMENT OF ENVIRONMENTAL PROTECTION STANDARDS, GUIDELINES AND REGULATIONS.



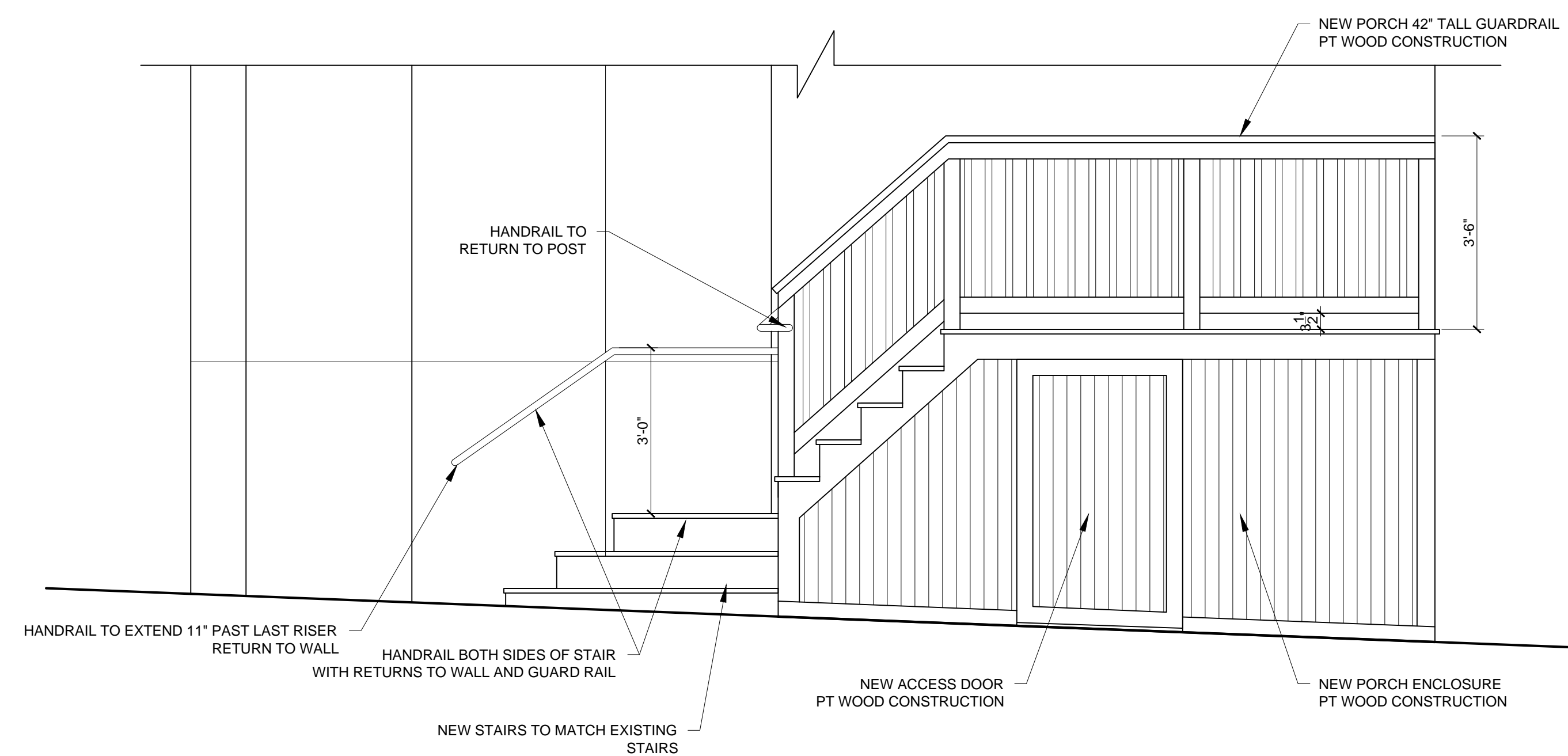
4 TYPICAL NEW SIDING DETAIL AT EXISTING WALL  
1/4" = 1'-0"



3 PORCH GUARDRAIL SECTION DETAIL  
1/4" = 1'-0"



2 PORCH PLAN  
1/2" = 1'-0"



1 PORCH ELEVATION  
1/2" = 1'-0"