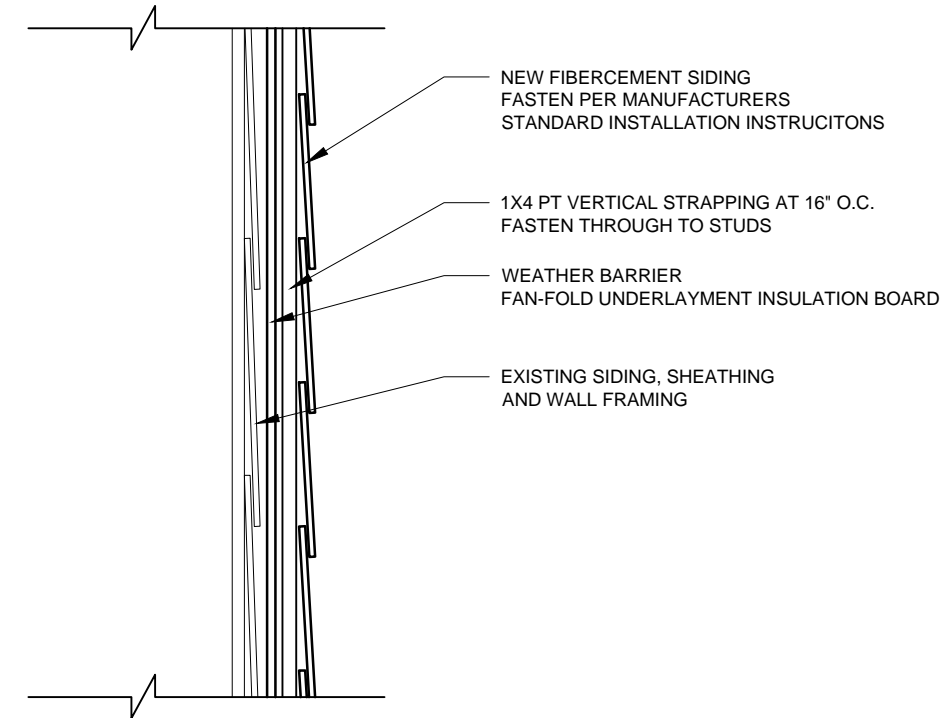


12 ALDER STREET PORTLAND, ME

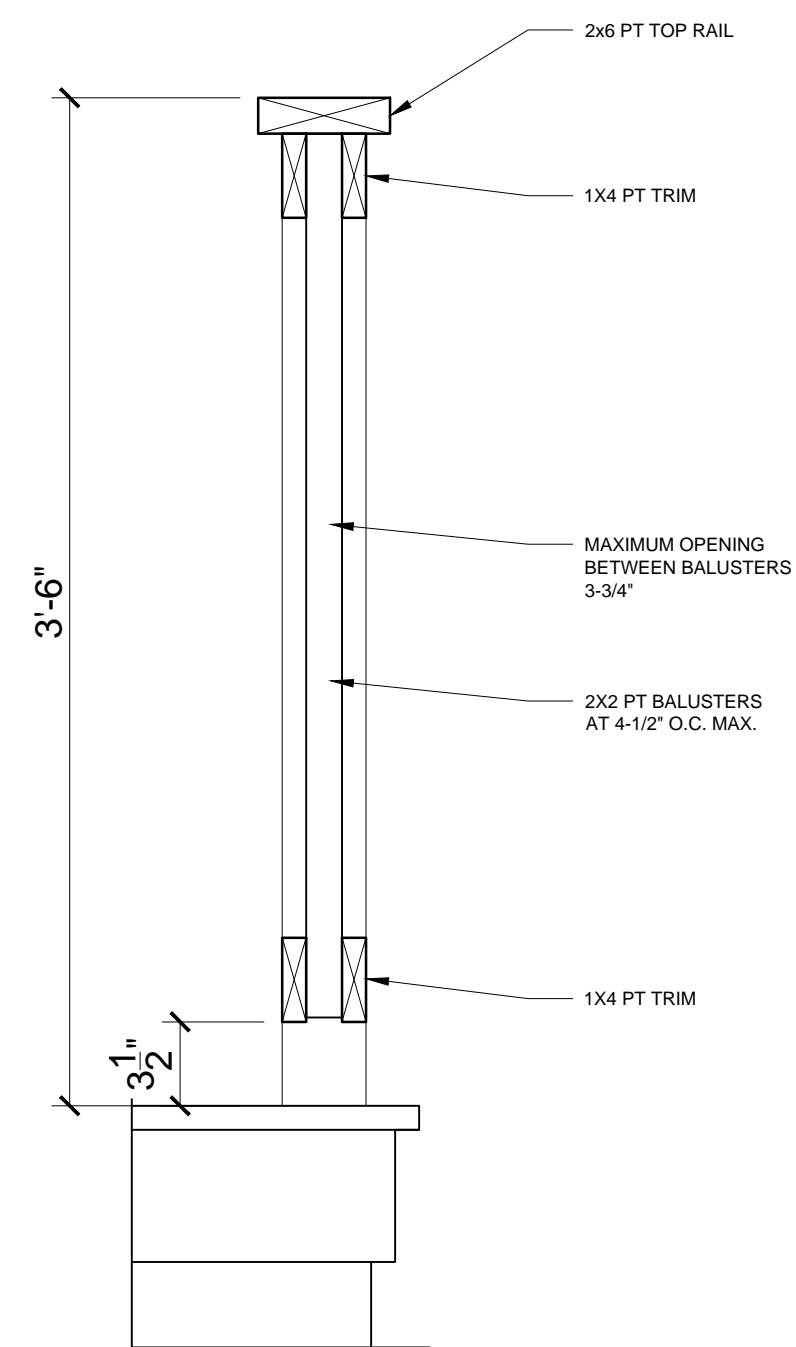
SEPTEMBER 6, 2017

UPDATED MARCH 28, 2018

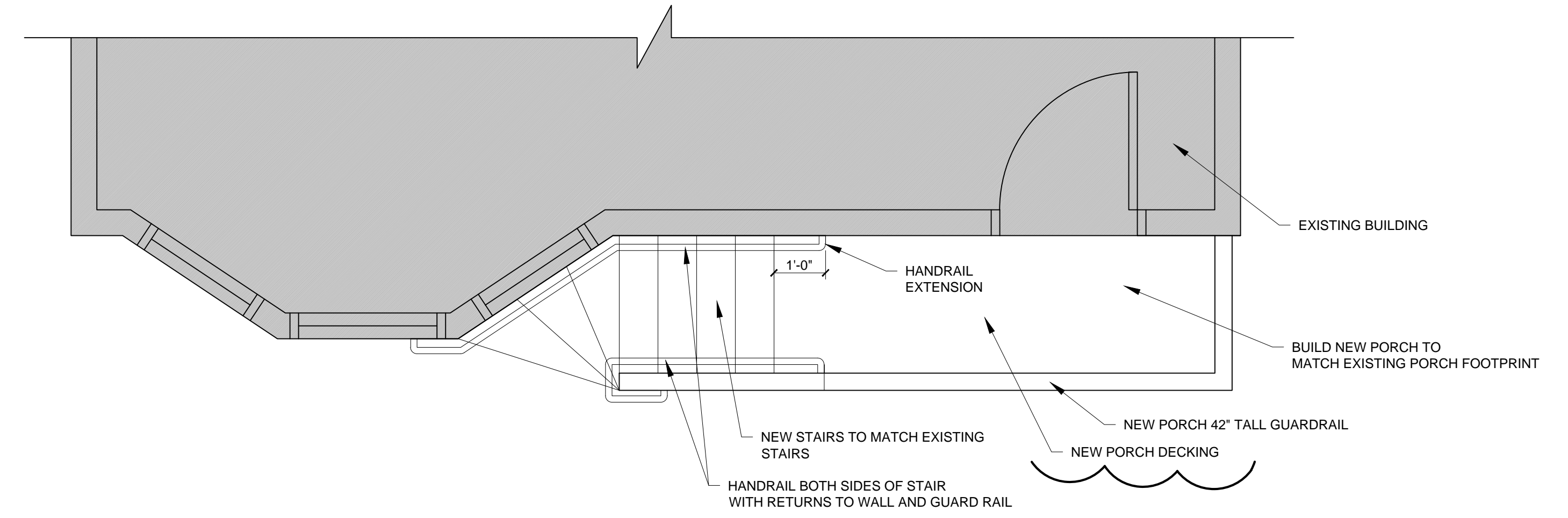
REMOVAL AND / OR COVERING, CLEAN UP AND DISPOSAL OF EXISTING ASBESTOS SIDING MUST BE IN COMPLIANCE WITH MAINE DEPARTMENT OF ENVIRONMENTAL PROTECTION STANDARDS, GUIDELINES AND REGULATIONS.



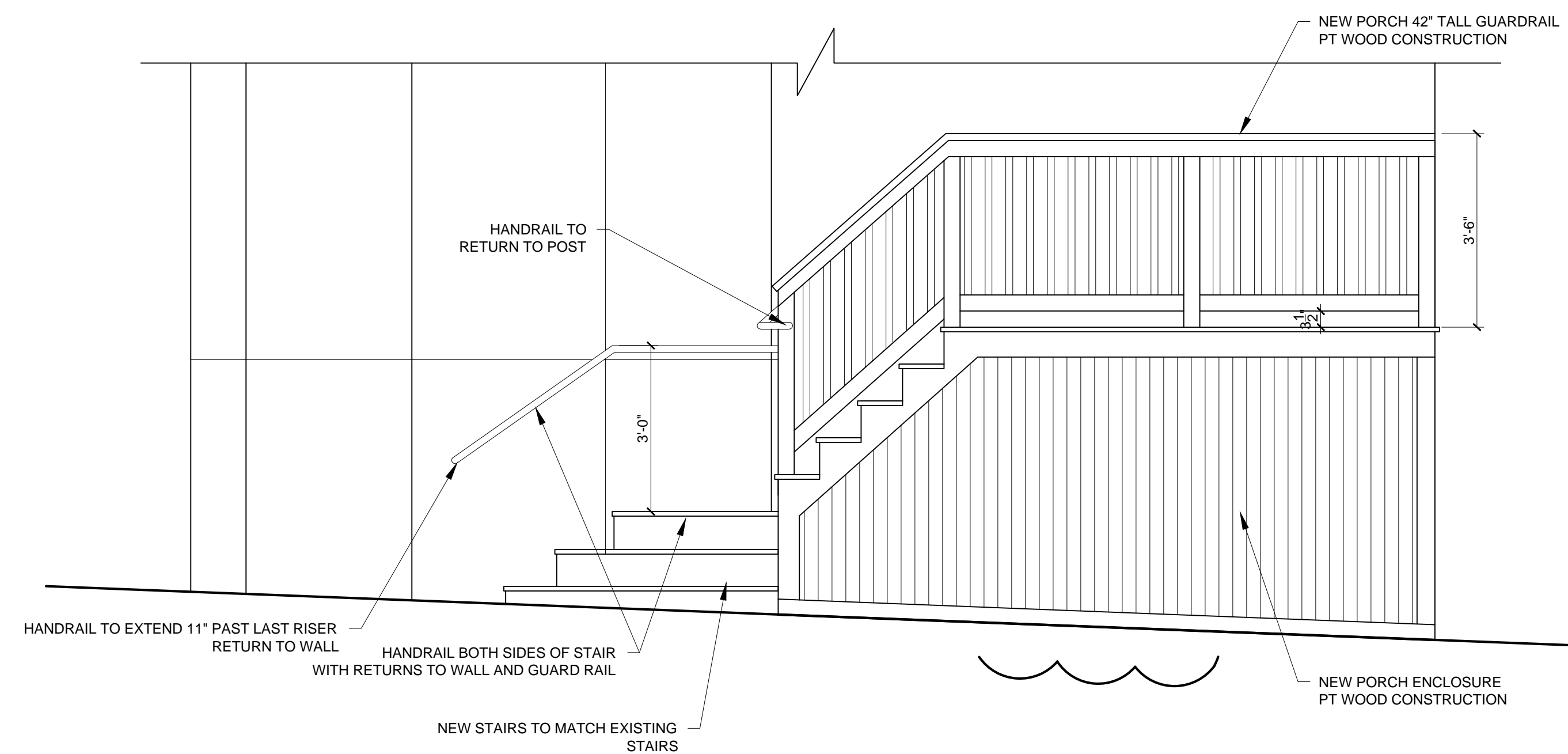
4 TYPICAL NEW SIDING DETAIL AT EXISTING WALL
1-1/2\"/>



3 PORCH GUARDRAIL SECTION DETAIL
1-1/2\"/>



2 PORCH PLAN
1/2\"/>



1 PORCH ELEVATION
1/2\"/>