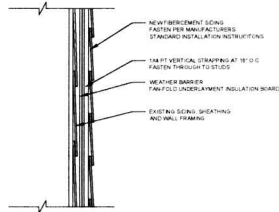
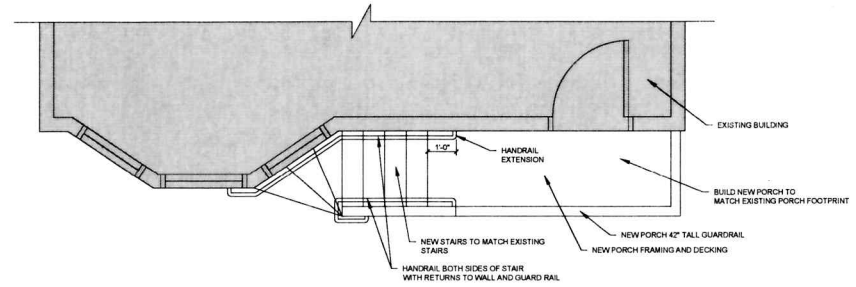


# 12 ALDER STREET PORTLAND, ME

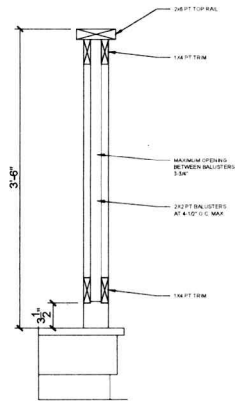
SEPTEMBER 6, 2017



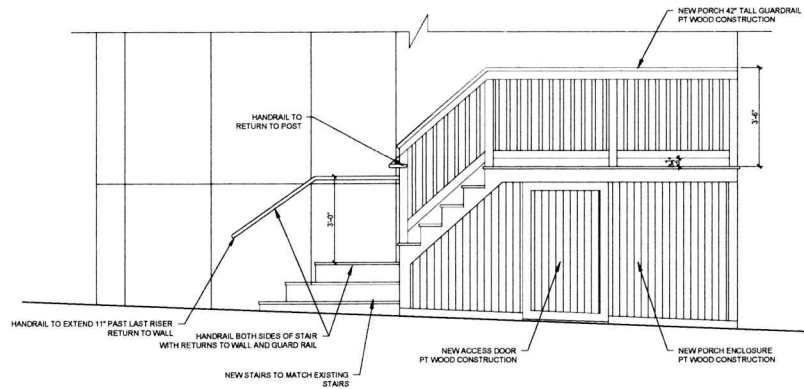
4 TYPICAL NEW SIDING DETAIL AT EXISTING WALL  
1/16" = 1'-0"



2 PORCH PLAN  
1/32" = 1'-0"



3 PORCH GUARDRAIL SECTION DETAIL  
1/32" = 1'-0"



1 PORCH ELEVATION  
1/32" = 1'-0"

PROGRESS PRINT ONLY  
Not for Construction

RYAN SENATORE ARCHITECTURE