



MAINE LICENSE # 102

ARCHITECT:
SHIELDS ARCHITECTURE CUMBERLAND, ME

CONTRACTOR:
THE THAXTER COMPANY PORTLAND, ME

SPECIAL APPLICATIONS:

LEGEND:
 ● RISE PIPE RISER UP
 ○ RISE PIPE RISER DOWN
 — STEEL PIPE (WET)
 - - CPVC PIPE (WET)
 ○ HYDRAULIC CALC. POINT

DESIGN NOTES:
 "ALL PIPING 1/2" AND LARGER TO BE SCHEDULE 10 STEEL W/ GROOVED FITTING.
 "ALL PIPING 1/2" AND SMALLER TO BE SCHEDULE 40 STEEL WITH THREADED FITTING OR CPVC AS INDICATED.
 "POSITION, LOCATION, SPACING, AND USE OF SPRINKLERS AND HANGERS SHALL BE IN ACCORDANCE WITH NFPA 13R 2010 ed.
 "HYDRAULIC CALCULATION PROCEDURES HAVE BEEN DONE IN ACCORDANCE WITH NFPA 13R 2010 ed. (SEE PLANS FOR LOCATION OF REMOTE AREAS, HYDRAULIC REFERENCE POINTS, AND SYSTEM DEMANDS)
 "ALL ELECTRICAL WORK TO BE DONE BY OTHERS.
 "DIMENSIONS AND LOCATIONS GIVEN FOR SPRINKLER HEADS AND PIPE MAY VARY TO ACCOMMODATE ACTUAL FIELD CONDITIONS.
 "OWNER TO PROVIDE SUFFICIENT HEAT TO PREVENT FREEZING IN WATER FILLED SPRINKLER PIPE AND EQUIPMENT.
 "OTHER TRADES TO COORDINATE THEIR WORK WITH SPRINKLER CONTRACTOR.

RELIABLE* MODEL F1 RES 49
 (23 / 155")
 K=4.9
 1/2" SEMI RECESSED WHITE PENDENT (16' x 16' SPACING)

RELIABLE* MODEL F1 RES 44
 (45 / 155")
 K=4.4
 1/2" SEMI RECESSED WHITE SIDEWALL (14' x 14' SPACING)

GLOBE* MODEL GL5615
 (9 / 200")
 K=5.6
 1/2" BRASS UPRIGHT W/ HEAD CAGE (130 SQ. FT. SPACING)

* OR APPROVED EQUAL
 TOTAL HEADS ON SHEET: 77
 SCALE: 3/16" = 1'-0"
 DATE: SEPTEMBER 25, 2012

DRAWN BY: JEREMY A. FOSS
 MAINE RMS #808
 NICET LEVEL III CERT. #126901
 CHECKED BY: E. POULIN (RMS# 515)
 NICET LEVEL IV CERT. # 108534

LOCATION:
385 CUMBERLAND AVENUE PORTLAND, ME

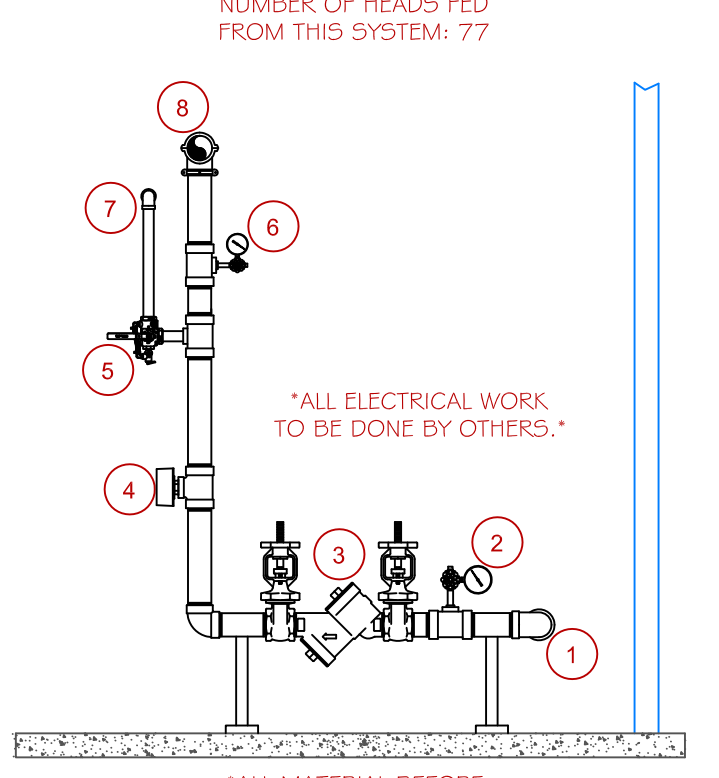
DRAWING TITLE:
SHALOM HOUSE
 FIRE PROTECTION PLAN (NFPA 13R 2010 ed.)

DRAWING NO.:
FP-1.1 REVISED

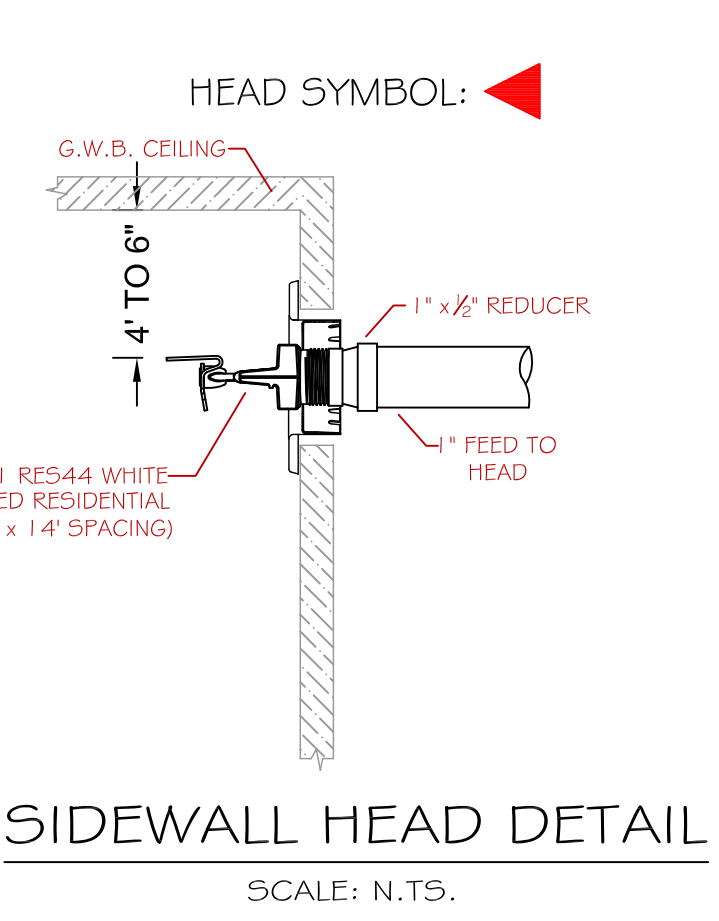
PROJECT DESCRIPTION
BUILDING CONST: THE BUILDING IS FOUR STORIES IN HEIGHT AND IS CONSTRUCTED WITH WOOD FRAMING THROUGHOUT. THE BUILDING IS EXISTING WITH THE EXCEPTION OF THE NEW EXTERIOR STAIR TOWER BEING ADDED. THE ROOF SYSTEM IS FINISHED WITH ASPHALT SHINGLES. INTERIOR WALLS ARE ALL FINISHED WITH G.W.B. CEILINGS THROUGHOUT ARE EITHER G.W.B. OR A.C.T. AS INDICATED.
BUILDING OCCUP: THE BUILDING IS DESIGNED TO HOUSE EIGHT APARTMENT UNITS AND CONTAINS MECHANICAL SYSTEMS IN THE BASEMENT AREA.
SPRINKLER DESIGN: THE SPRINKLER SYSTEM HAS BEEN DESIGNED USING A LIGHT HAZARD CLASSIFICATION FOR ALL AREAS ABOVE THE BASEMENT. THE BASEMENT HAS BEEN DESIGNED USING AN ORDINARY HAZARD GROUP I CLASSIFICATION DUE TO THE MECHANICAL EQUIPMENT. THE BASEMENT IS NOT ACCESSIBLE TO BUILDING TENANTS. THE SPRINKLER SYSTEM HAS BEEN DESIGNED TO MEET ALL APPLICABLE STANDARDS REGARDING AN NFPA 13R 2010 ed. SYSTEM. THE STANDPIPE SYSTEM HAS BEEN DESIGNED AS A MANUAL WET CLASS I SYSTEM AS REQUIRED BY THE PORTLAND FIRE DEPARTMENT. THE STANDPIPE SYSTEM HAS BEEN DESIGNED TO MEET ALL APPLICABLE STANDARDS REGARDING AN NFPA 14 2007 ed. SYSTEM.

RISER DETAIL LEGEND

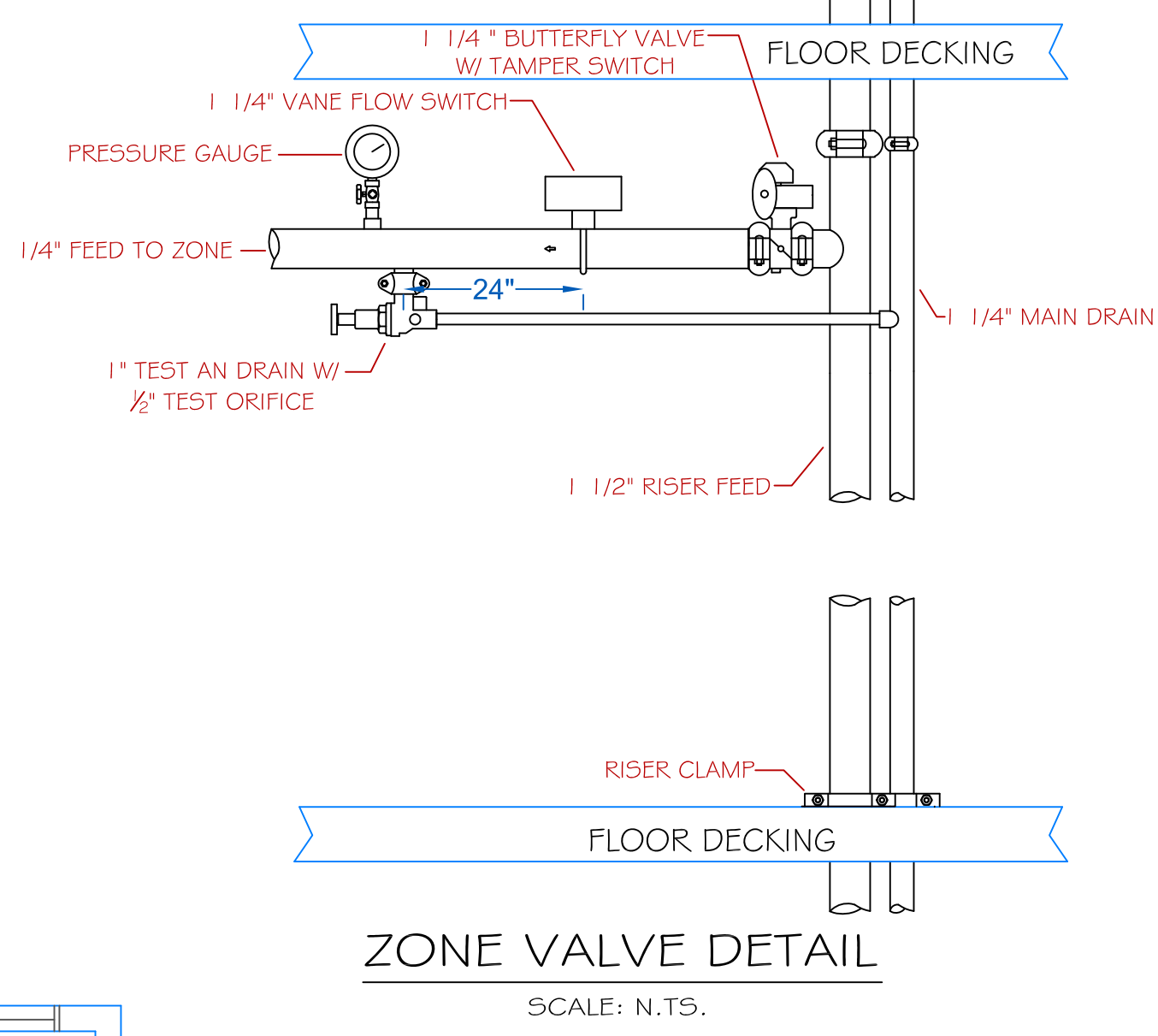
1) 2" POLY UNDERGROUND (BY OTHERS)	6) 1/4" PRESSURE GAUGE (SYSTEM)
2) 1/4" PRESSURE GAUGE (SUPPLY)	7) 1" TEST N. DRAIN - 1/2" TEST W/ RELIEF VALVE
3) 1-1/2" WILKINS 950XL BACKFLOW PREVENTER W/ GATE VALVES	8) 1" MAIN DRAIN TO SYSTEM
4) 1-1/2" VANE FLOW SWITCH	



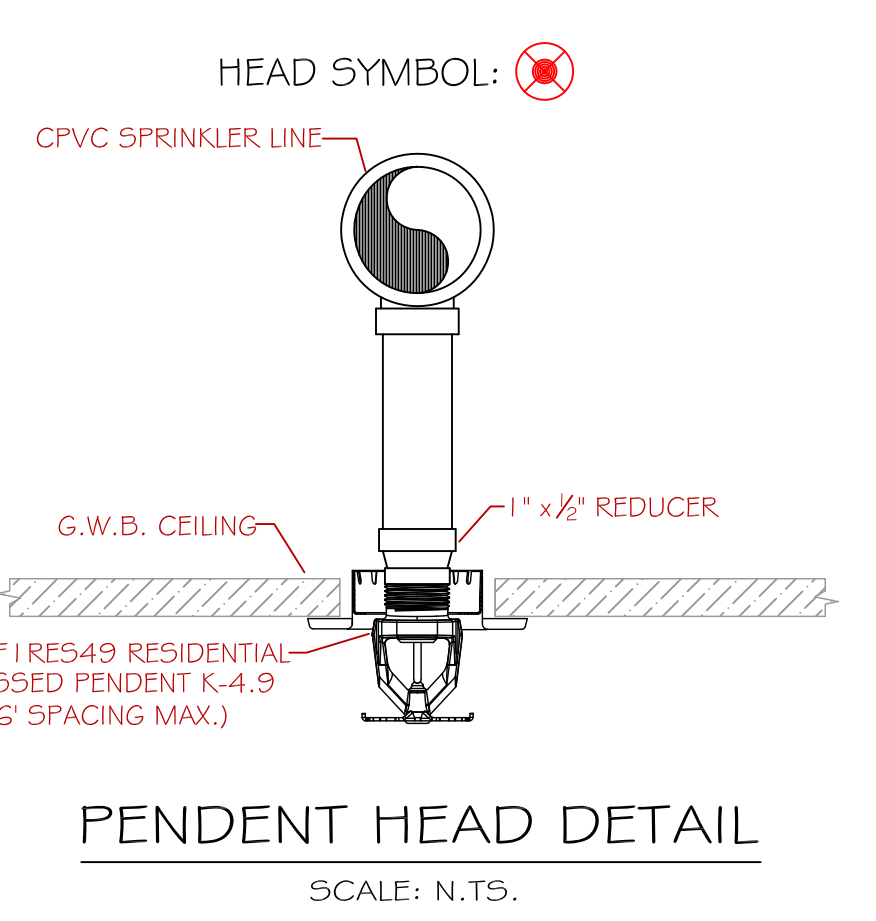
RISER DETAIL
 SCALE: N.T.S.



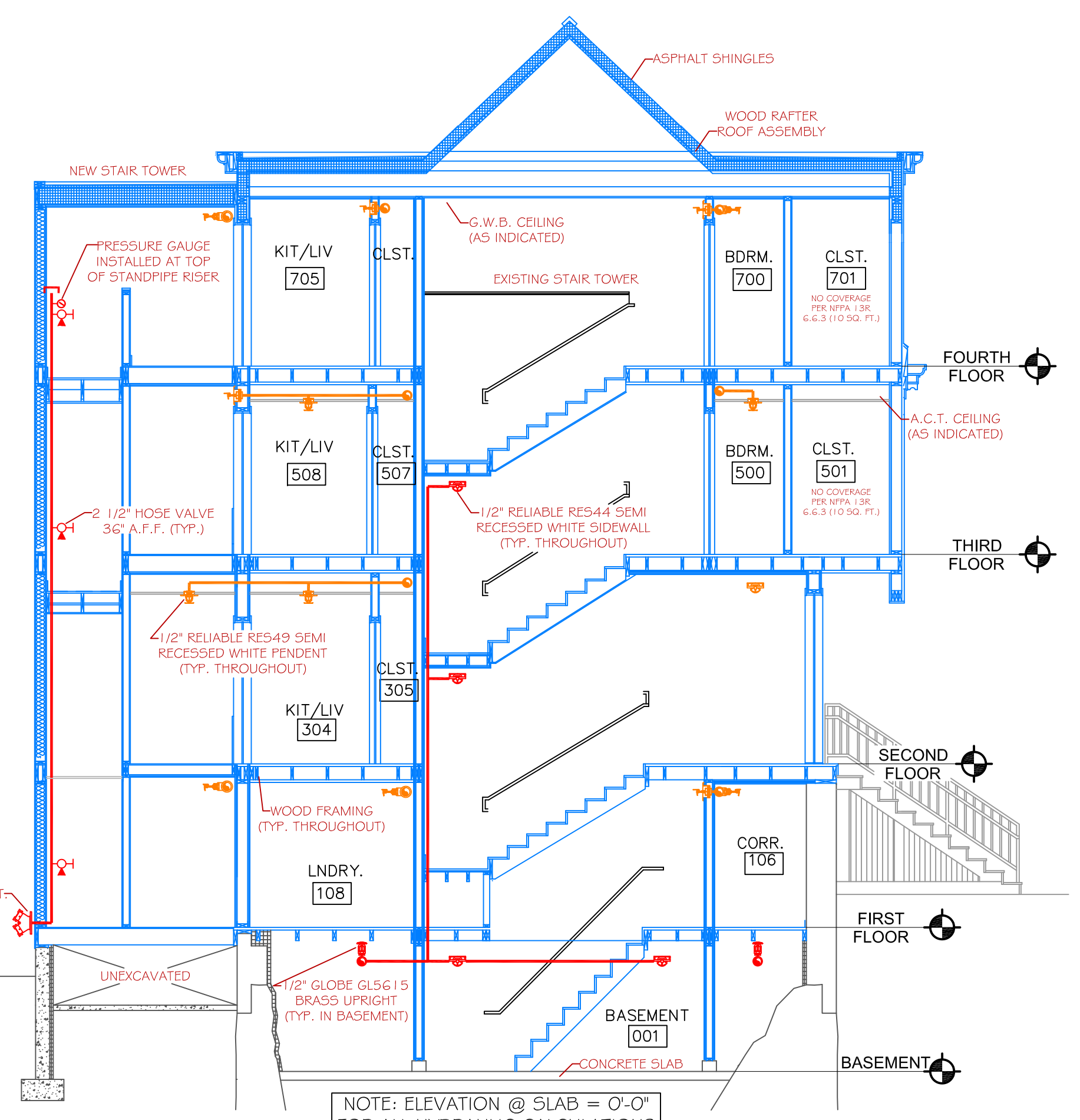
SIDEWALL HEAD DETAIL
 SCALE: N.T.S.



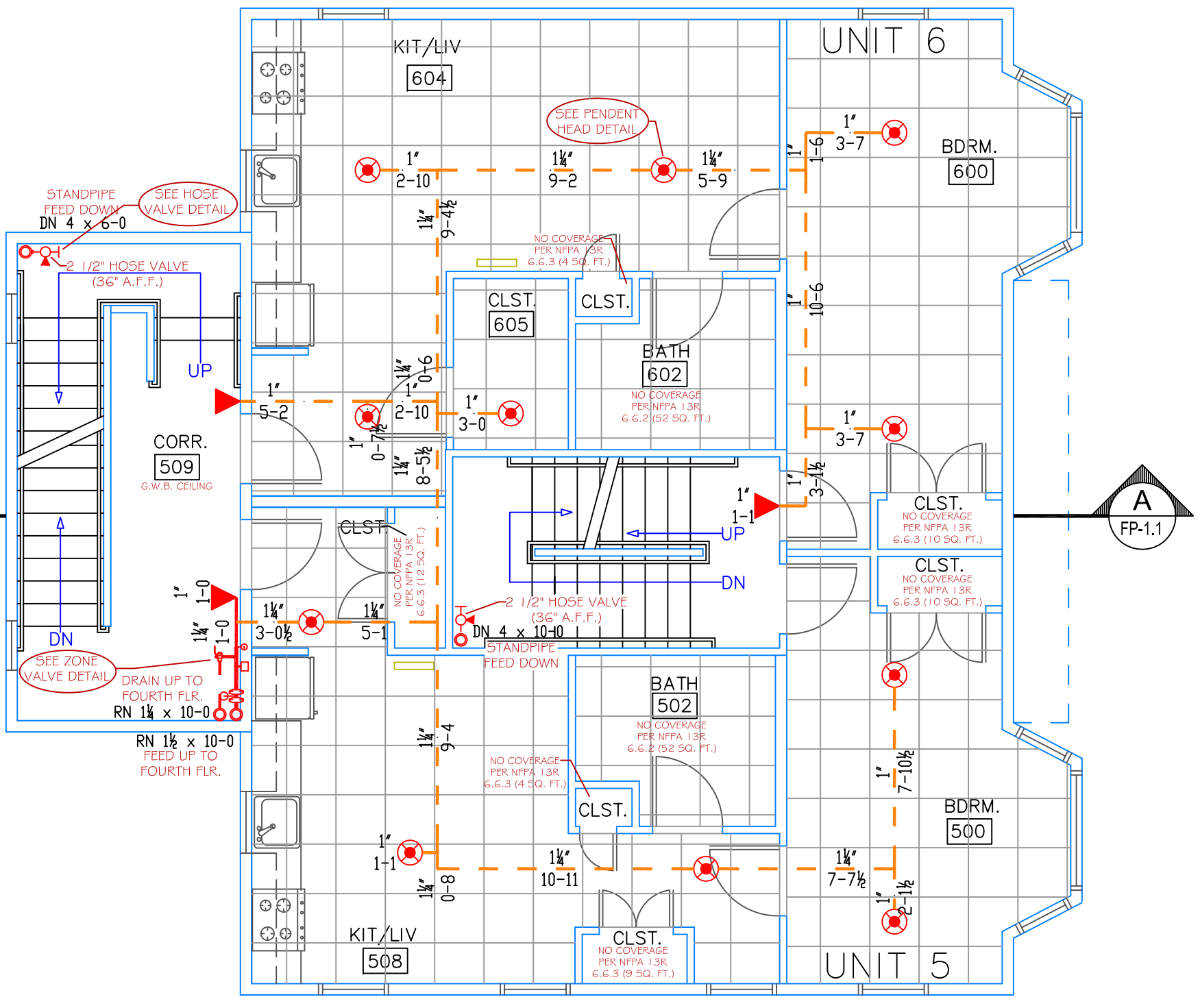
ZONE VALVE DETAIL
 SCALE: N.T.S.



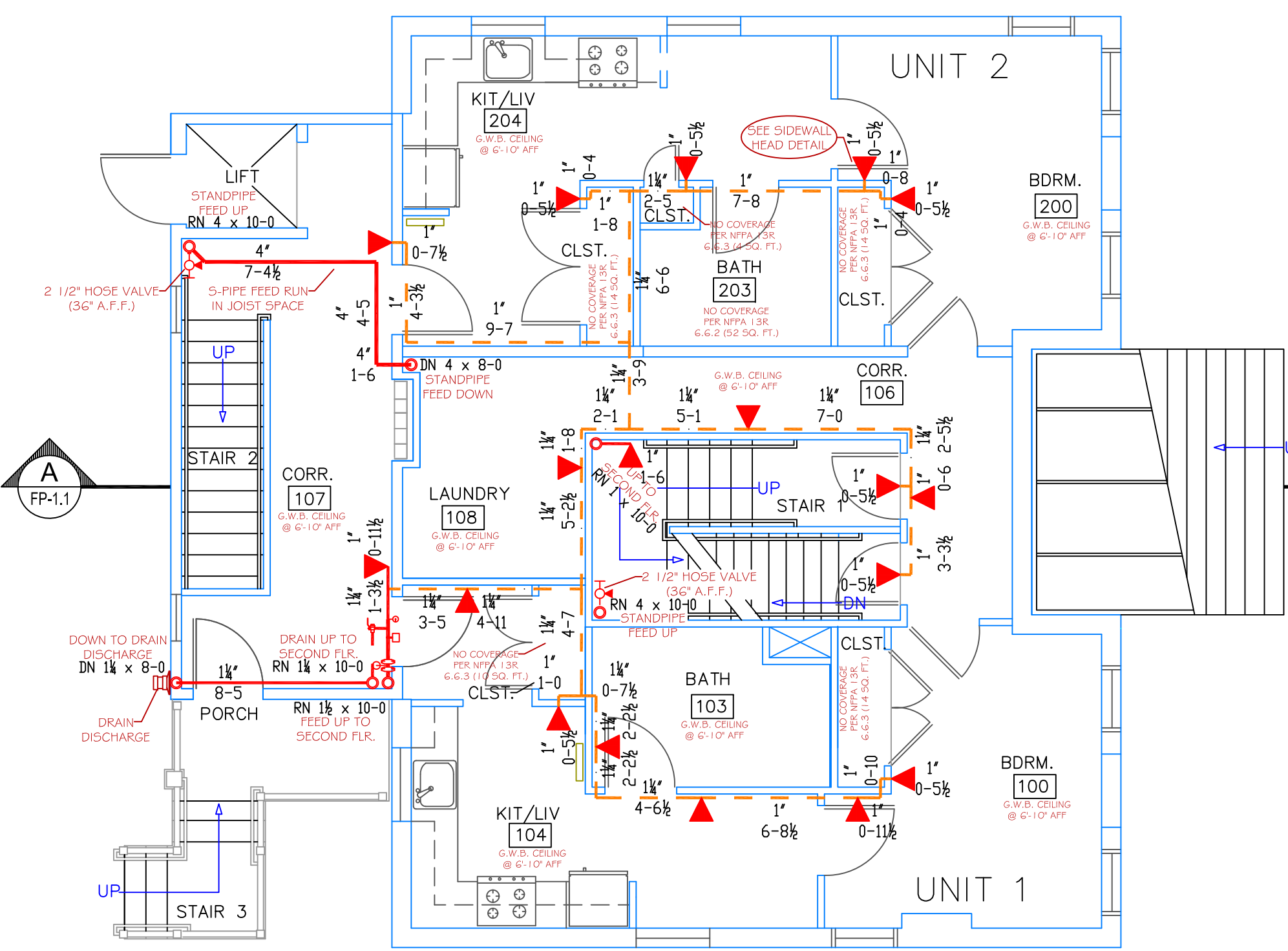
PENDENT HEAD DETAIL
 SCALE: N.T.S.



SECTION DETAIL "A"
 SCALE: N.T.S.



THIRD FLOOR PLAN
 SCALE: 3/16" = 1'-0"
 PROTECTED AREA: 1,410 SQ. FT.



FIRST FLOOR PLAN
 SCALE: 3/16" = 1'-0"
 PROTECTED AREA: 1,325 SQ. FT.

EXCEPTIONS FOR 13R 2010ed. SYSTEM

SPRINKLERS SHALL BE INSTALLED IN ALL AREAS.

(13R) 6.6.2 SPRINKLERS SHALL NOT BE REQUIRED IN BATHROOMS WHERE BOTH OF THE FOLLOWING CONDITIONS ARE MET:

- 1) THE BATHROOM AREA DOES NOT EXCEED 55 FT SQ.
- 2) THE WALLS AND CEILING INCLUDING WALLS AND CEILINGS BEHIND FIXTURES, ARE OF NON-COMBUSTIBLE OR LIMITED-COMBUSTIBLE MATERIALS PROVIDING A 15 MINUTE THERMAL BARRIER.

(13R) 6.6.3 SPRINKLERS SHALL NOT BE REQUIRED IN CLOTHES CLOSETS, LINEN CLOSETS, AND PANTRIES WITHIN THE DWELLING UNITS WHEN THE FOLLOWING CONDITIONS ARE MET:

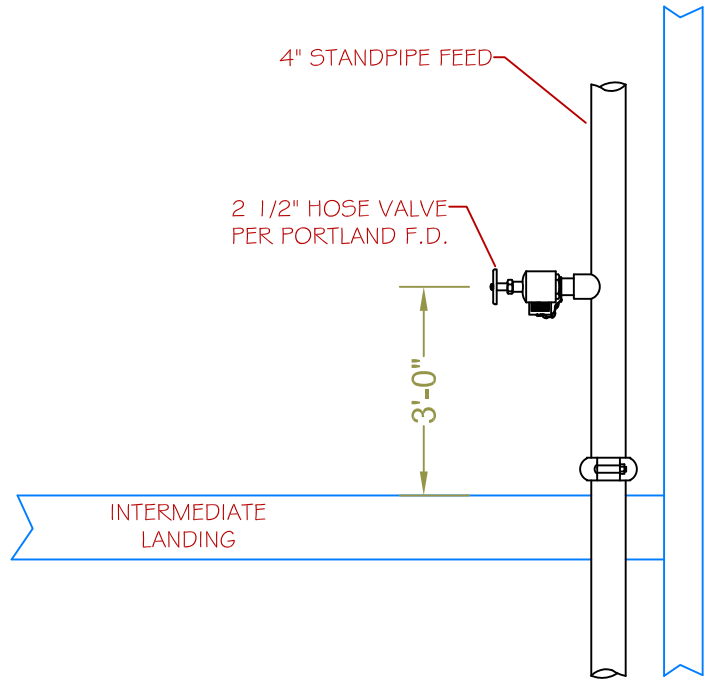
- 1) THE AREA OF THE SPACE DOES NOT EXCEED 24 FT SQ.
- 2) THE LEAST DIMENSION DOES NOT EXCEED 3FT.
- 3) THE WALLS AND CEILING ARE SURFACED WITH NON-COMBUSTIBLE OR LIMITED-COMBUSTIBLE MATERIAL.

(13R) 6.6.5 SPRINKLERS SHALL NOT BE REQUIRED IN ANY PORCHES, BALCONIES, CORRIDORS, CARPORTS, AND STAIRS THAT ARE OPEN AND ATTACHED

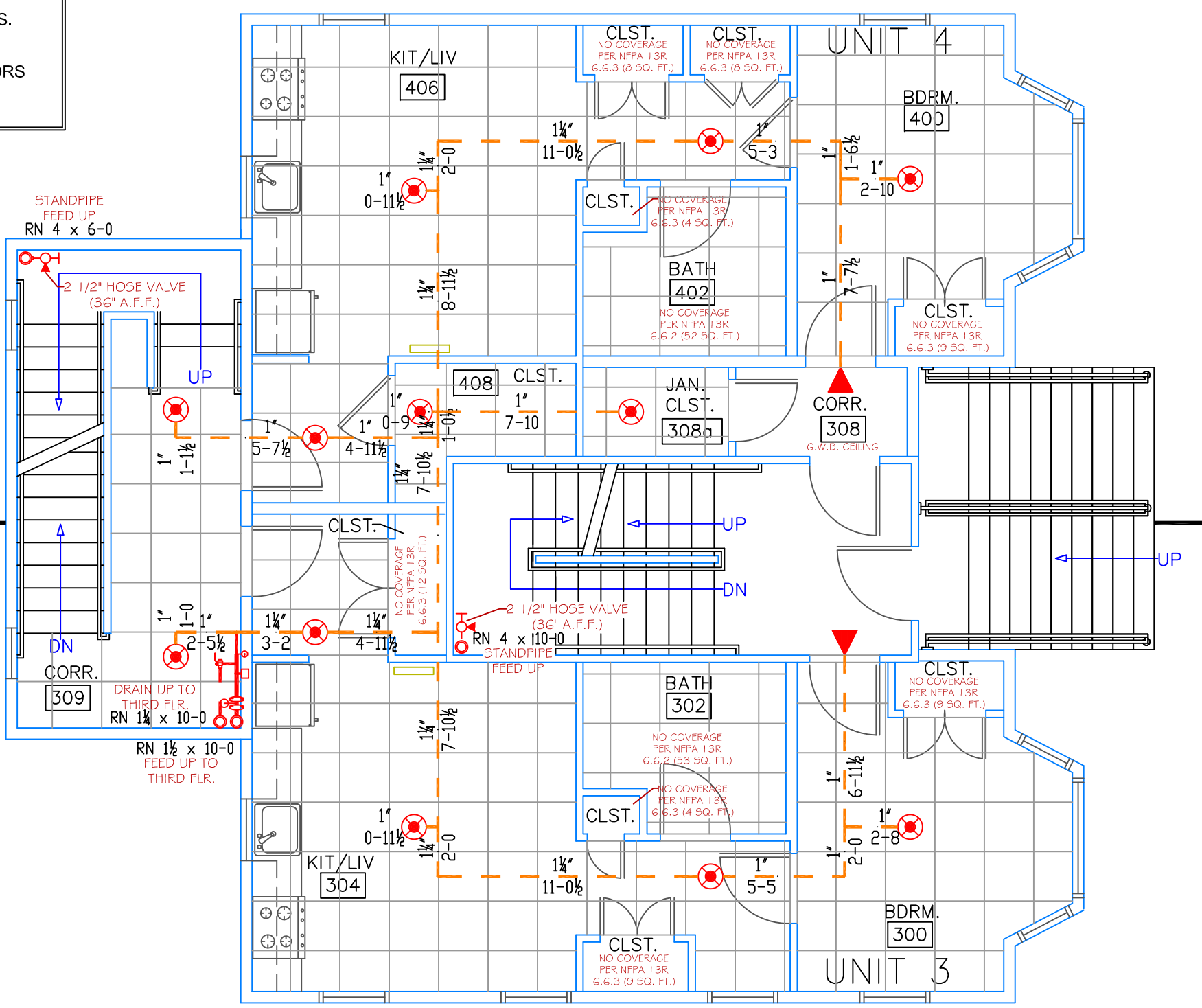
(13R) 6.6.6 SPRINKLERS SHALL NOT BE REQUIRED IN ATTICS, PENTHOUSE, EQUIPMENT ROOMS, ELEVATOR MACHINE ROOMS.

(13R) 6.6.7 SPRINKLERS SHALL NOT BE REQUIRED IN CLOSETS ON EXTERIOR BALCONIES OR EXTERIOR BREEZEWAYS/CORRIDORS REGARDLESS OF SIZE UNLESS THERE IS AN ACCESS DOOR DIRECTLY INTO THE DWELLING UNIT.

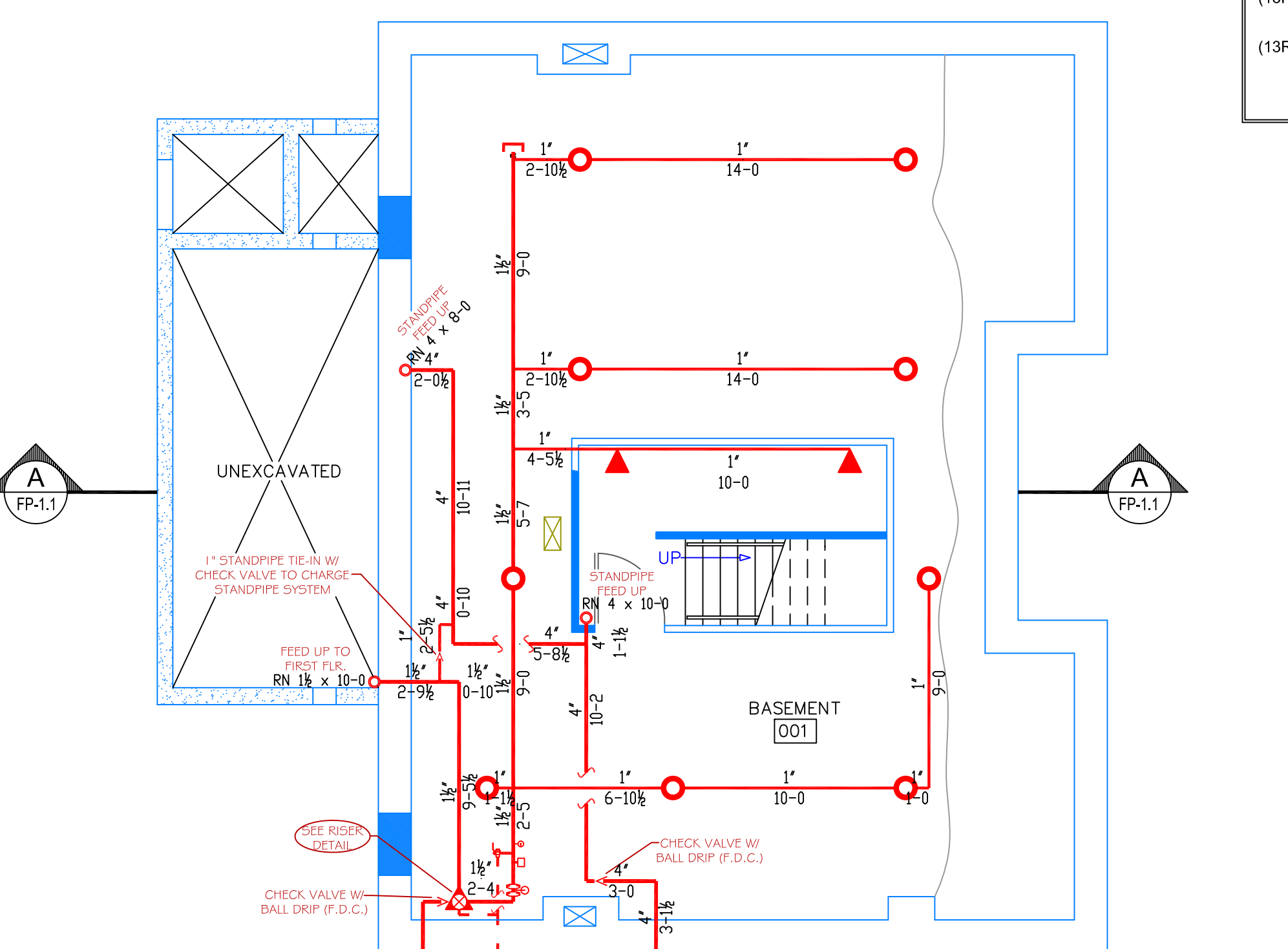
NOTE: THE STANDPIPE SYSTEM HAS BEEN DESIGNED AS A CLASS I MANUAL WET STANDPIPE SYSTEM IN ACCORDANCE WITH NFPA 14 2007 ed. -STANDPIPE SYSTEM IS BEING INSTALLED PER PORTLAND FIRE DEPARTMENT-



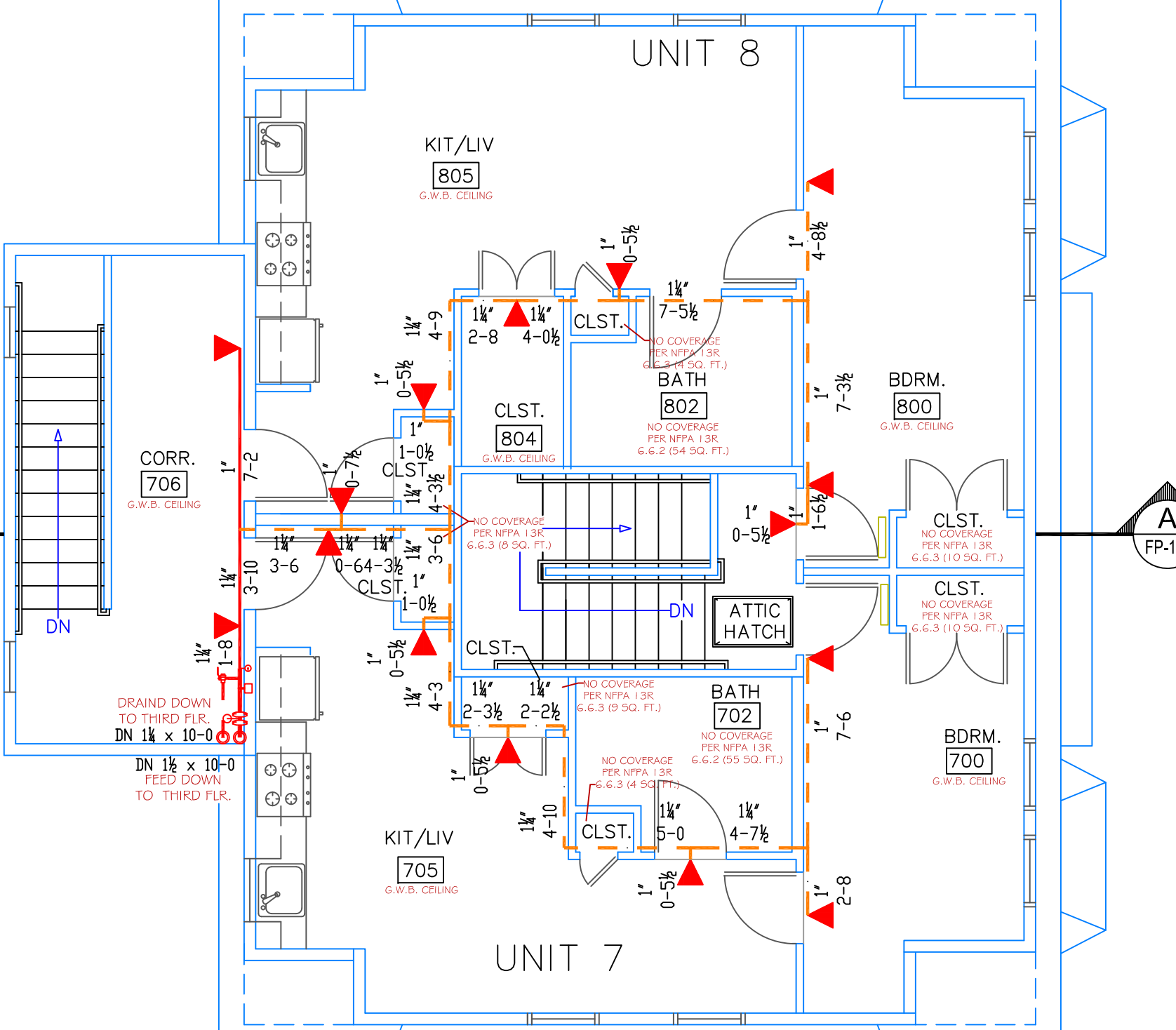
HOSE VALVE DETAIL
 SCALE: N.T.S.



SECOND FLOOR PLAN
 SCALE: 3/16" = 1'-0"
 PROTECTED AREA: 1,365 SQ. FT.



BASEMENT PLAN
 SCALE: 3/16" = 1'-0"
 PROTECTED AREA: 1,005 SQ. FT.



FOURTH FLOOR PLAN
 SCALE: 3/16" = 1'-0"
 PROTECTED AREA: 1,325 SQ. FT.