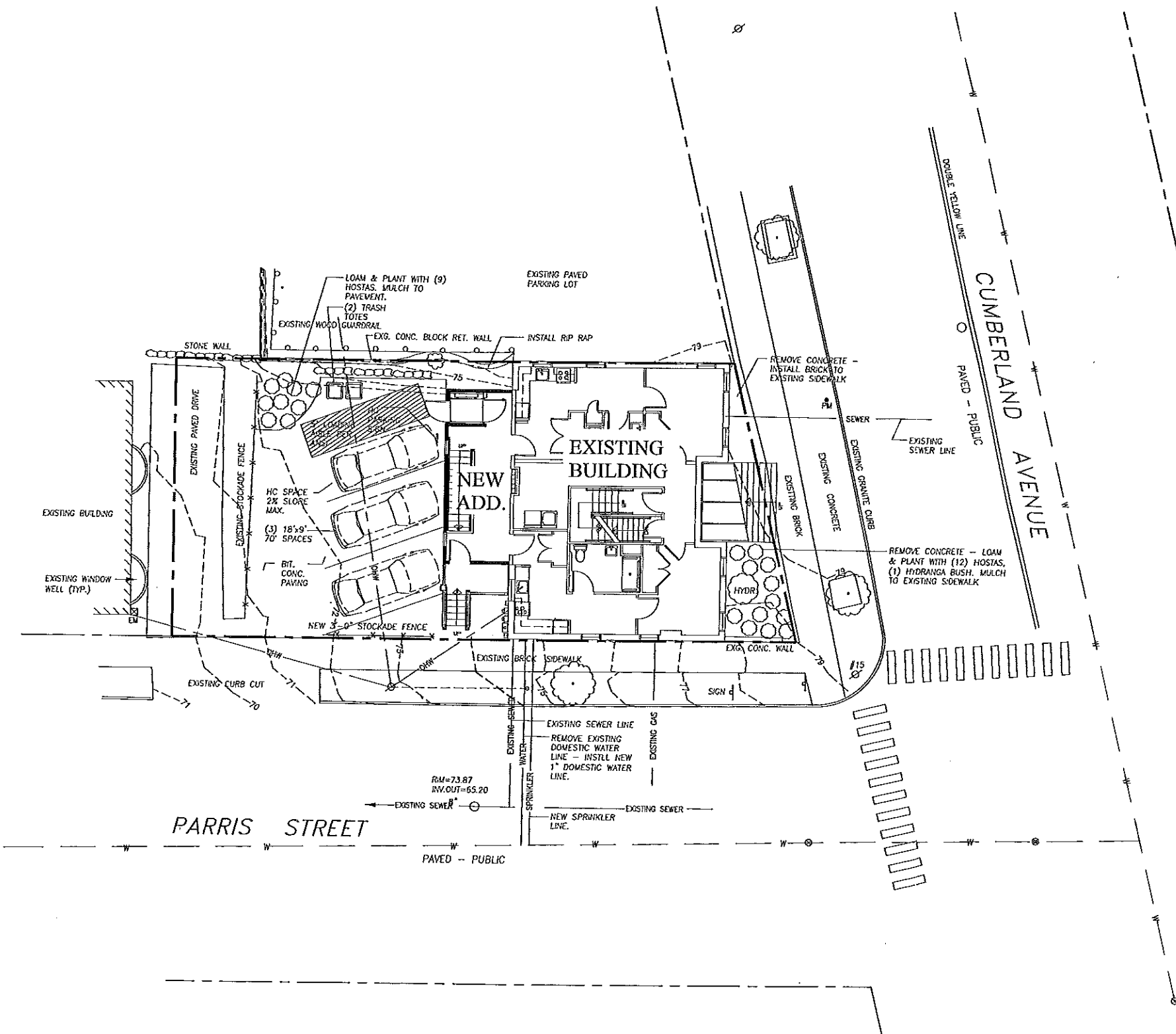
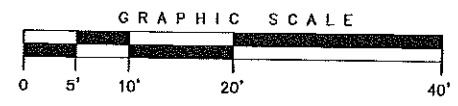
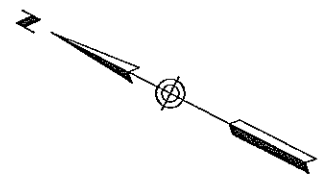


Final Approved Plan
 Stockade fence required as
 shown along Parris Street
 Barbara Burdette
 12/9/11



- LEGEND:**
- ⊙ GAS VALVE
 - ⊕ WATER VALVE
 - ⊗ UTILITY POLE
 - MANHOLE
 - ⊖ EM ELECTRIC METER
 - ⊙ PM PARKING METER
 - ⊙ SIGN
 - ⊙ DECIDUOUS TREE
 - FENCE
 - STONE WALL
 - CURB
 - OHW OVERHEAD WIRES
 - G GAS LINE
 - 100 1" CONTOUR
 - W WATER LINE
 - — — PROPERTY LINE



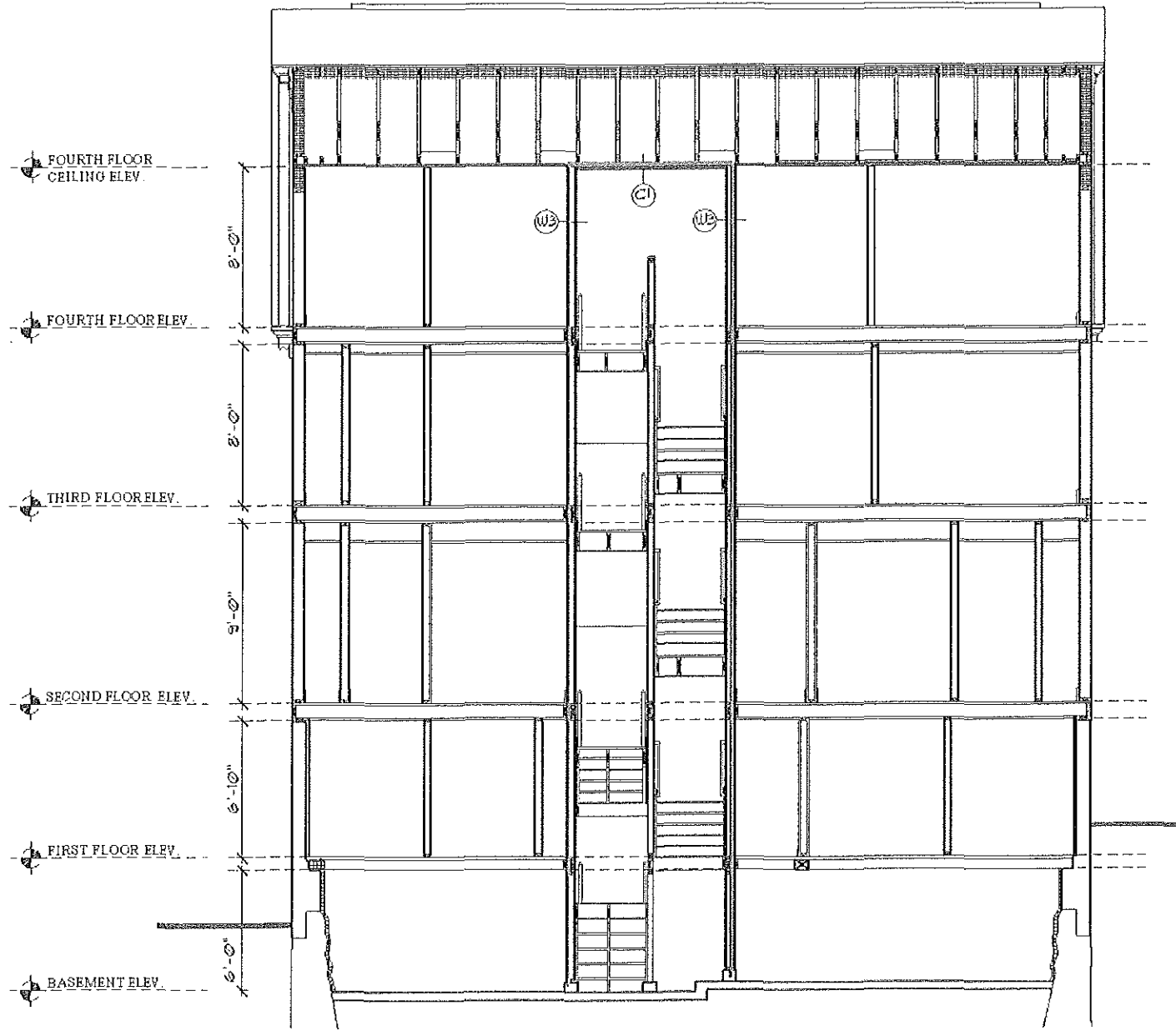
SHIELDS ARCHITECTURE
 216 Range Road, Cumberland, Maine
 (207) 776-8926

ADDITION & RENOVATION
 385 CUMBERLAND AVENUE
 PORTLAND, MAINE

Project: _____
 Scale: 1/8" = 1'-0"
 Date: 12/07/11
 City of Portland - Administrative
 Authorization Site Plan Application.

SITE PLAN

S-1

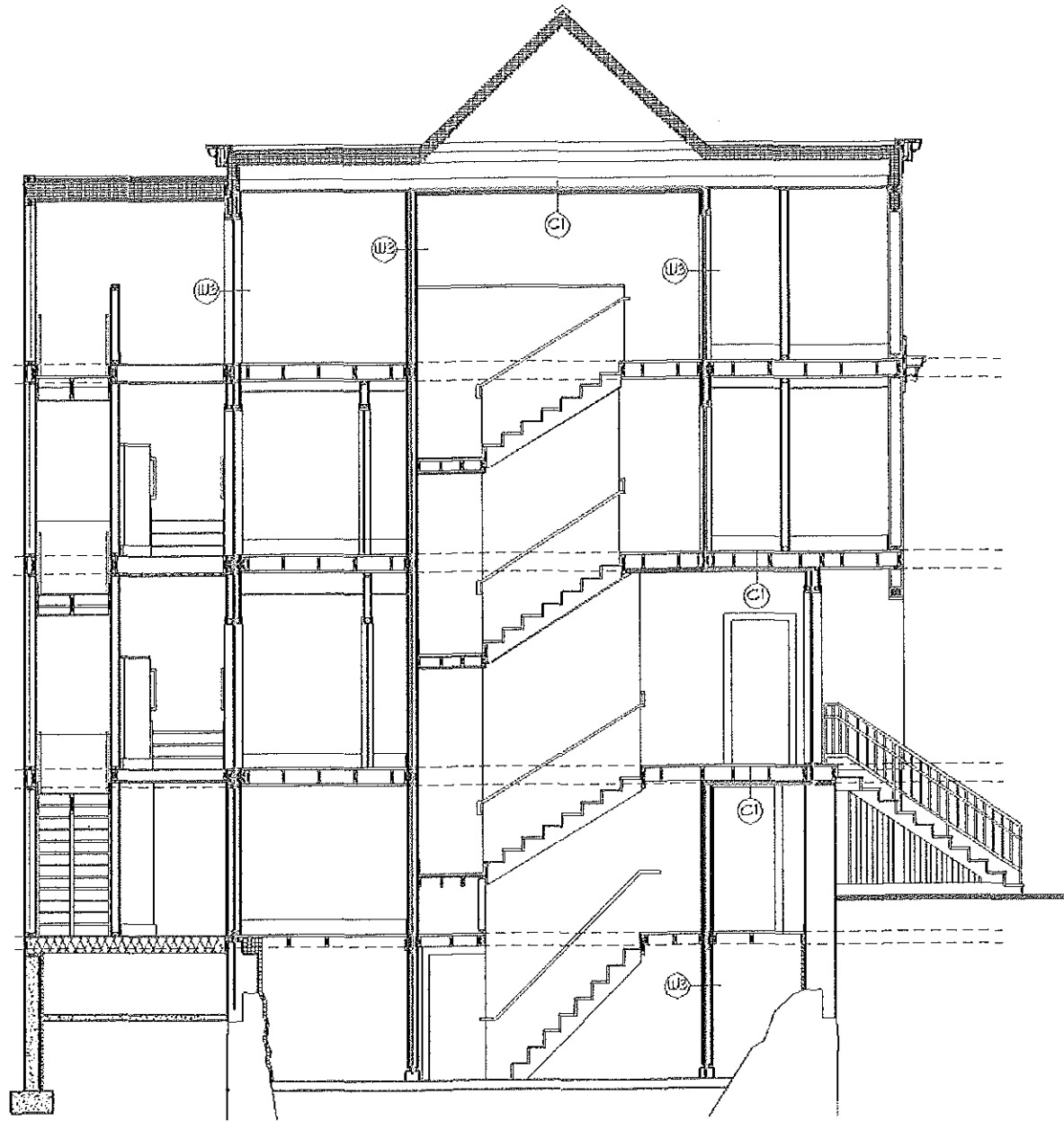


BUILDING SECTION

LEGEND

(2) HOUR RATED CONSTRUCTION

WALL / CEILING TYPES - REFER TO CONSTRUCTION SET DATED 11/9/11, DRAWINGS A-11 & A-11a.



BUILDING SECTION

W3

C1

RECEIVED
FEB - 8 2012
Dept. of Building Inspections
City of Portland Maine

Drawing
LIFE SAFETY - BUILDING SECTIONS

Architect:
SHIELDS ARCHITECTURE

216 Range Road,
Cumberland, Maine

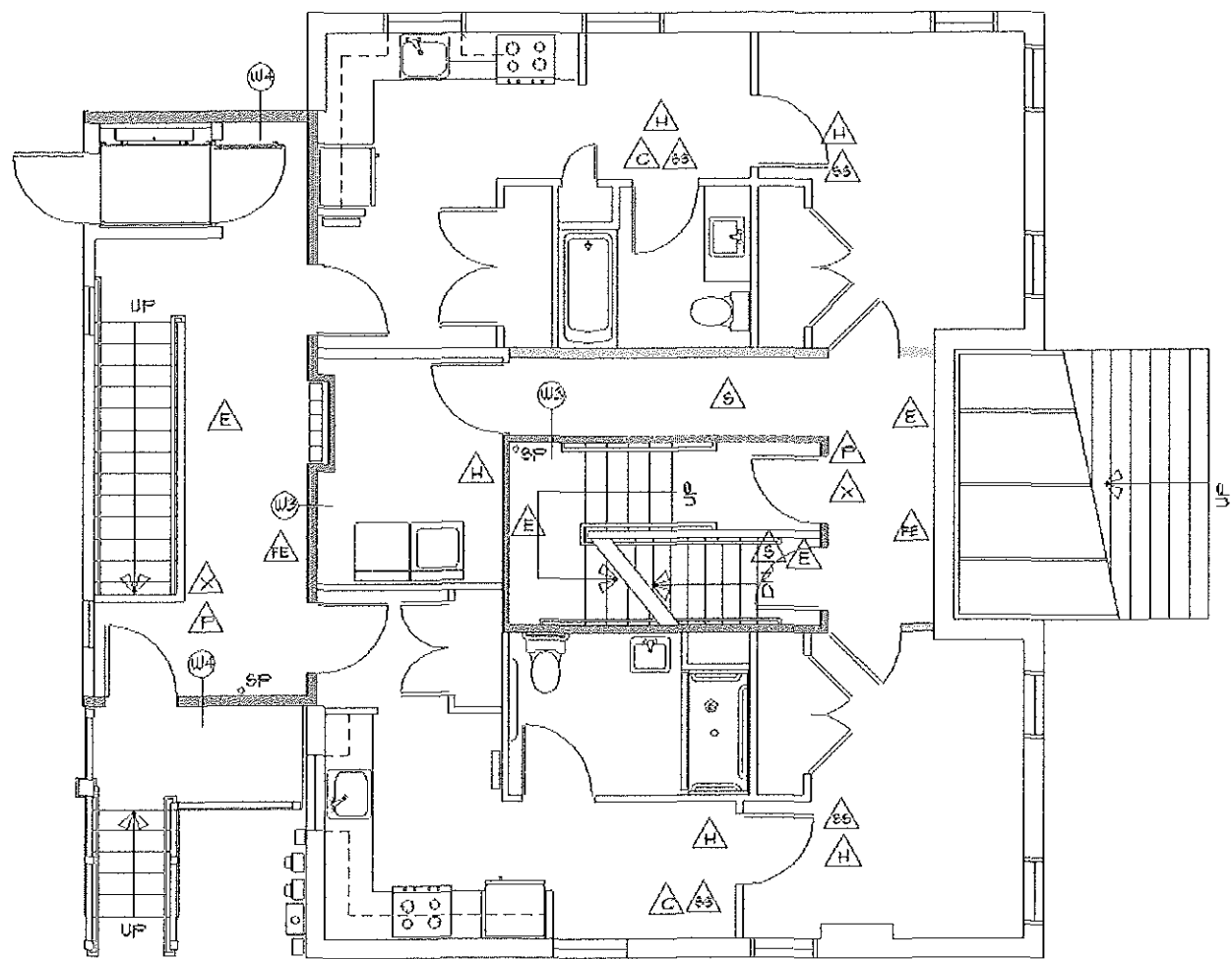
Date
2/2/12

Scale
1/8" = 1'-0"

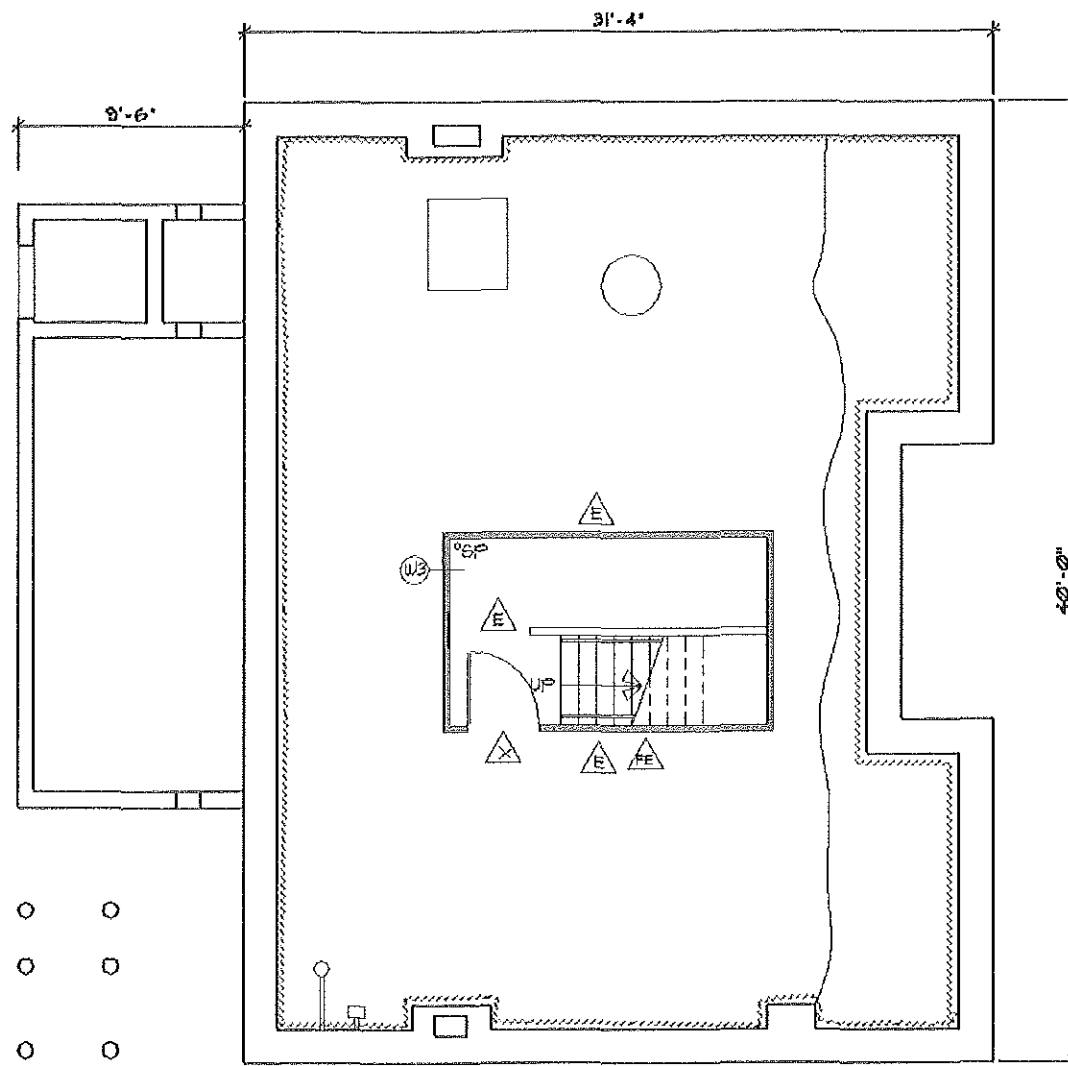
Project:
SHALOM HOUSE
ADDITION & RENOVATION

385 Cumberland Avenue
Portland, Maine

LP-1



FIRST FLOOR PLAN



BASEMENT PLAN

LEGEND

(2) HOUR RATED CONSTRUCTION

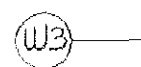


(1/2) HOUR RATED CORRIDOR WALL



WALL TYPES - REFER TO CONSTRUCTION SET DATED 11/9/11, DRAWINGS A-11.

STAND PIPE



EMERGENCY LIGHTING



PULL STATION



EXIT SIGN



SINGLE STATION SMOKE DETECTOR - AUDIO/VISUAL



SYSTEM SMOKE DETECTOR AUDIO/VISUAL



SYSTEM HEAT DETECTOR AUDIO/VISUAL



SINGLE STATION CARBON MONOXIDE DETECTOR - AUDIO/VISUAL



FIRE EXTINGUISHER



RECEIVED
FEB - 8 2012
Dept. of Building Inspections
City of Portland, Maine

Drawing
LIFE SAFETY - BASEMENT & FIRST
FLOOR PLANS

Architect:
SHIELDS ARCHITECTURE

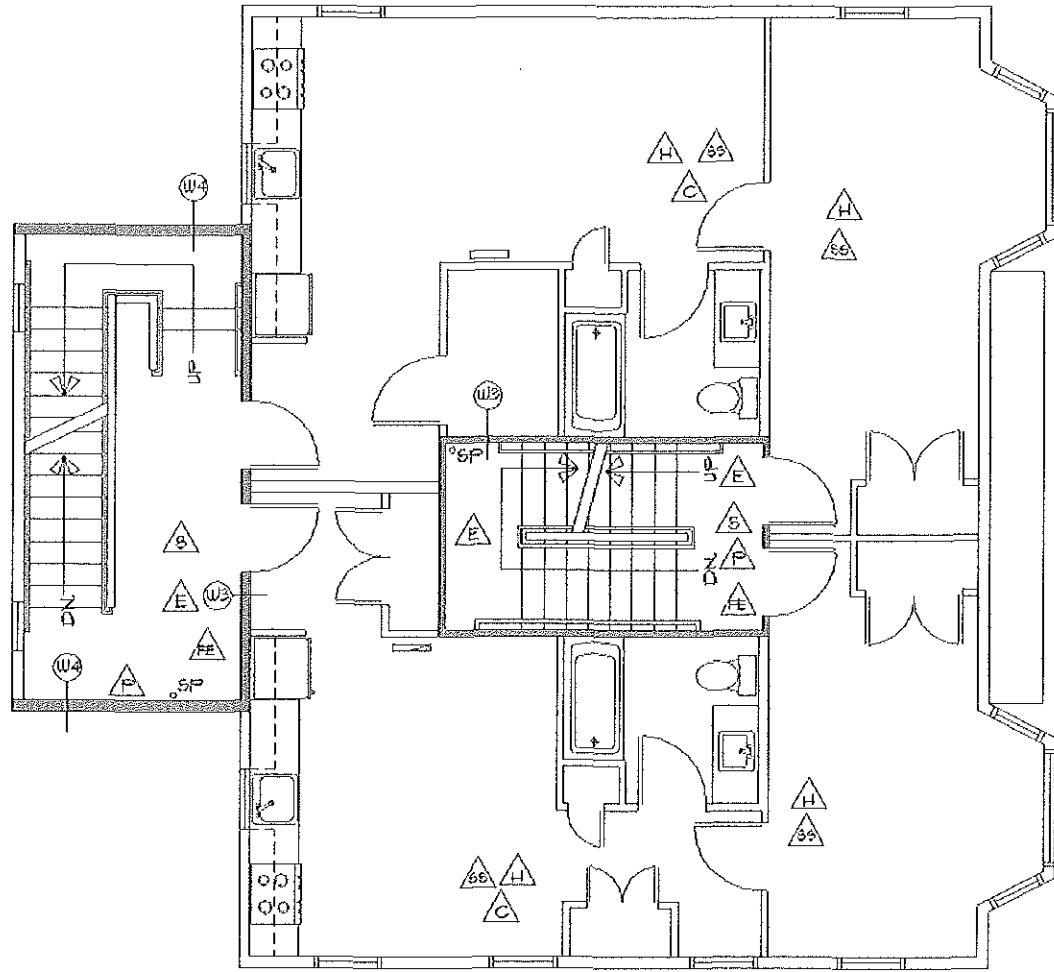
216 Range Road,
Cumberland, Maine

Date 2/2/12
Scale 1/8" = 1'-0"

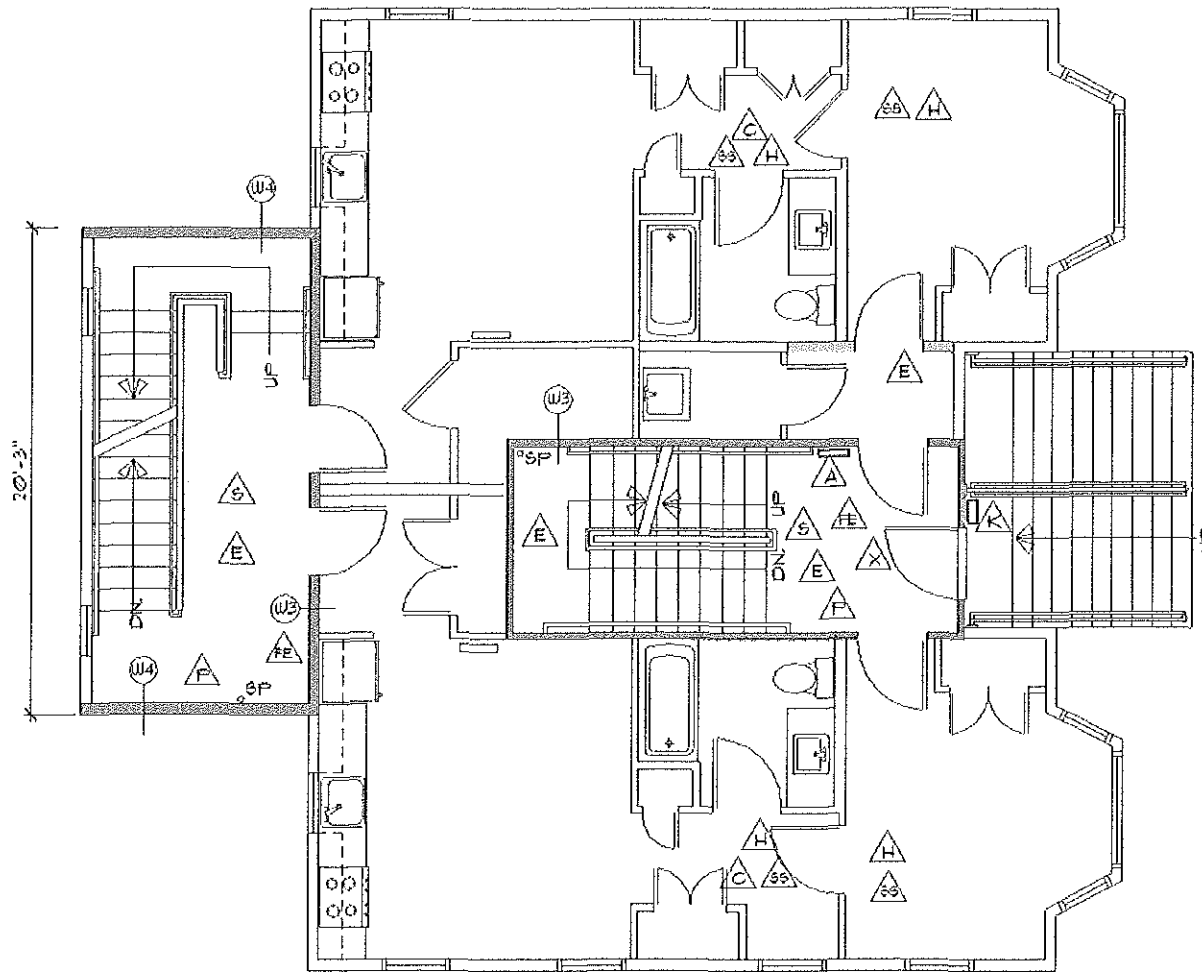
Project:
SHALOM HOUSE
ADDITION & RENOVATION

385 Cumberland Avenue
Portland, Maine

LP-2



THIRD FLOOR PLAN



SECOND FLOOR PLAN

LEGEND

(2) HOUR RATED CONSTRUCTION

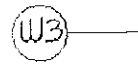


(1/2) HOUR RATED CORRIDOR WALL



WALL TYPES - REFER TO CONSTRUCTION SET DATED 11/9/11, DRAWINGS A-II.

STAND PIPE



. SP

EMERGENCY LIGHTING



PULL STATION



EXIT SIGN



SINGLE STATION SMOKE DETECTOR - AUDIO/VISUAL



SYSTEM SMOKE DETECTOR AUDIO/VISUAL



SYSTEM HEAT DETECTOR AUDIO/VISUAL



SINGLE STATION CARBON MONOXIDE DETECTOR - AUDIO/VISUAL



FIRE EXTINGUISHER



RECEIVED
FEB - 8 2012
Dept. of Building Inspections
City of Portland, Maine

Drawing

LIFE SAFETY - SECOND & THIRD FLOOR PLANS

Architect:

SHIELDS ARCHITECTURE

216 Range Road,
Cumberland, Maine

Scale

1/8" = 1'-0"

Date

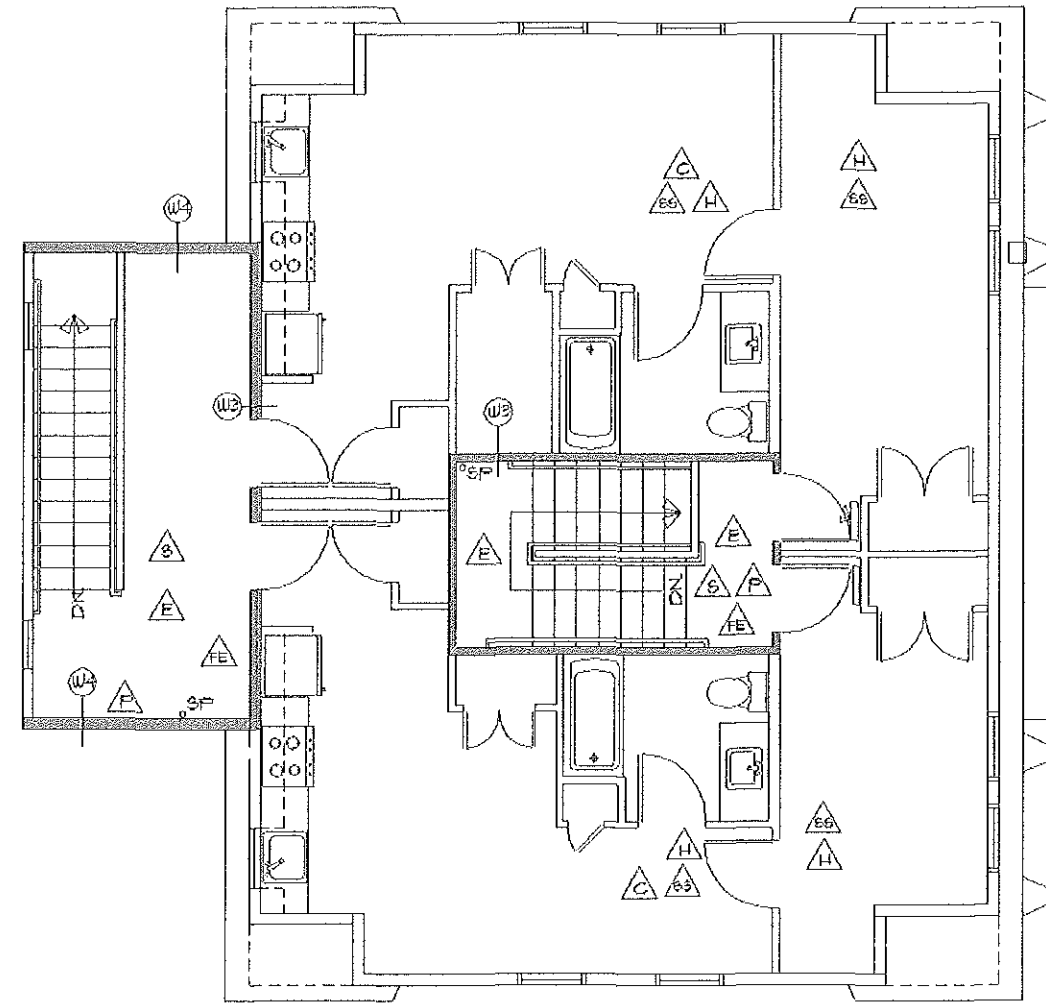
2/2/12

Project

SHALOM HOUSE
ADDITION & RENOVATION

385 Cumberland Avenue
Portland, Maine

LP-3

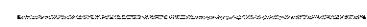


FOURTH FLOOR PLAN

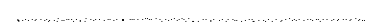
RECEIVED
 FEB - 8 2012
 Dept. of Building Inspections
 City of Portland, Maine

LEGEND

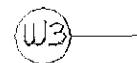
(2) HOUR RATED CONSTRUCTION



(1/2) HOUR RATED CORRIDOR WALL



WALL TYPES - REFER TO CONSTRUCTION SET DATED 11/9/11, DRAWINGS A-11.



STAND PIPE



EMERGENCY LIGHTING



FULL STATION



EXIT SIGN



SINGLE STATION SMOKE DETECTOR - AUDIO/VISUAL



SYSTEM SMOKE DETECTOR AUDIO/VISUAL



SYSTEM HEAT DETECTOR AUDIO/VISUAL



SINGLE STATION CARBON MONOXIDE DETECTOR - AUDIO/VISUAL



FIRE EXTINGUISHER



Drawing
 LIFE SAFETY - FOURTH FLOOR PLAN

Architect:
 SHIELDS ARCHITECTURE

216 Range Road,
 Cumberland, Maine

Date

2/2/12

Scale

1/8" = 1'-0"

Project:
 SHALOM HOUSE
 ADDITION & RENOVATION

385 Cumberland Avenue
 Portland, Maine

LP-4