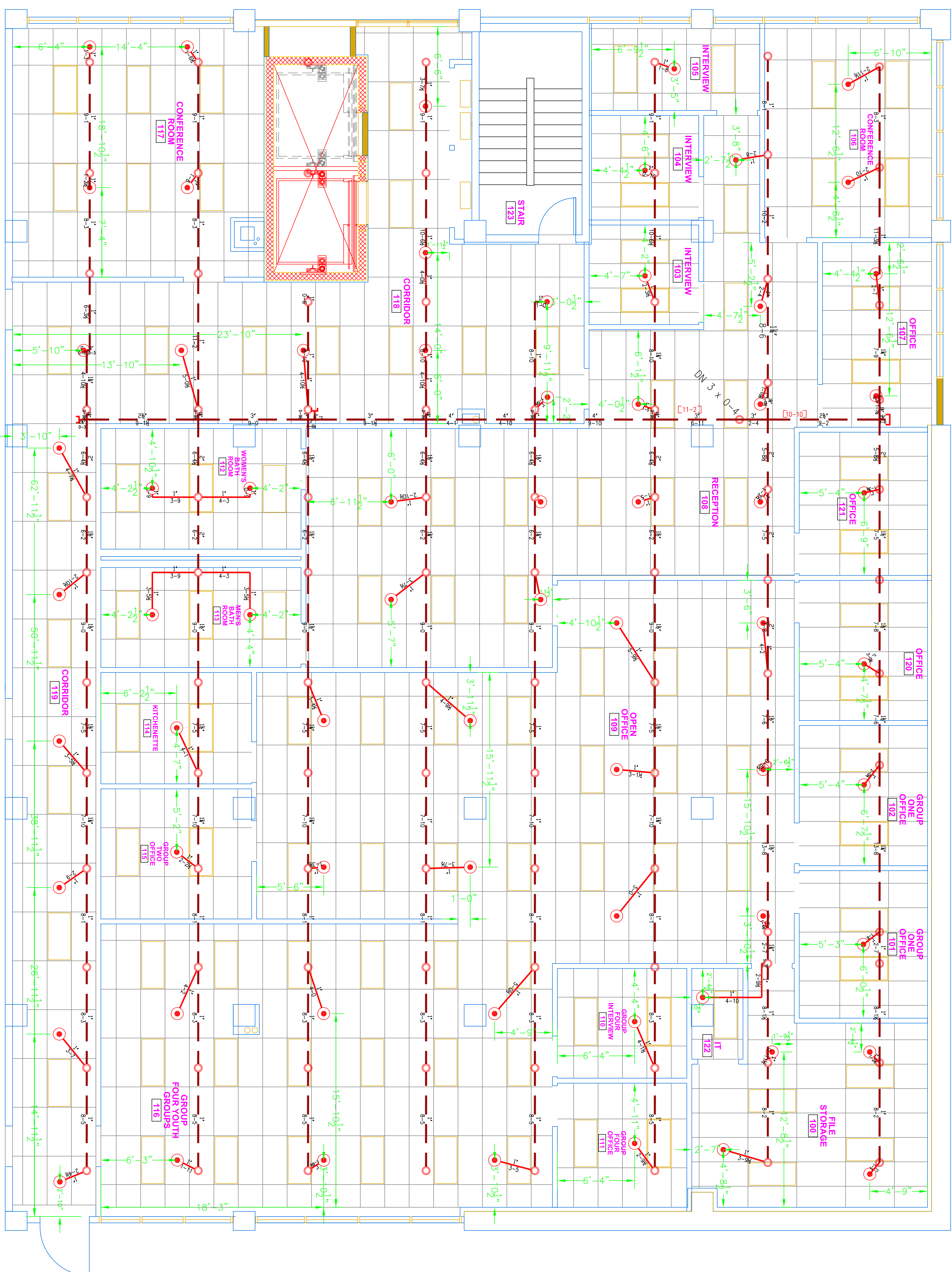


LEGEND:  
 ○ NEW PIPE RISEN UP OR DOWN  
 ○ NEW PIPE RISEN UP  
 ○ NEW PIPE RISEN DOWN  
 ○ PROPOSED NEW PIPE  
 ○ EXISTING PIPE  
 ○ SYSTEM RISE  
 ○ PIPE PITCH 1/4" MANS. 1/2" LINES  
 ○ HYDRAULIC CALC. POINT

DESIGN & SYSTEM NOTES:  
 WITH APPROVED EQUALS\*  
 ALL PIPING 1 1/2" & SMALLER TO BE SCHEDULE 40  
 ALL PIPING 2" & LARGER TO BE SCHEDULE 80  
 POSITION, LOCATION, SPACING AND USE OF HANGERS  
 SHALL BE IN ACCORDANCE WITH NFPA 13 (SEE PLAN  
 FOR HANGER SCHEDULES AND SYSTEM HANGERS)  
 ALL PIPING SHALL BE IN ACCORDANCE WITH NFPA 13  
 SHALL BE IN ACCORDANCE WITH NFPA 13 (SEE PLAN  
 FOR HANGER SCHEDULES AND SYSTEM HANGERS)  
 HIGH TIE FIRE PROTECTION IS TO BE IN WORK  
 AT 4" MAN 7" AFF NEAR OF BUILDING.  
 DIMENSIONS AND LOCATIONS GIVEN FOR SPRINKLER  
 ACTUAL FIELD CONDITIONS  
 OWNER TO PROVIDE ADEQUATE HEAT THROUGHOUT  
 BUILDING TO PROTECT WATER FILLED PIPING AND  
 EQUIPMENT FROM FREEZING TEMPERATURES  
 ON "DRY" AND "PRE" ACTION SYSTEMS  
 OWNER IS RESPONSIBLE TO MAINTAIN THE SPRINKLER  
 SYSTEM IN ACCORDANCE WITH NFPA 13 (SEE PLAN  
 FOR PIPING SCHEDULES AND SYSTEM HANGERS)  
 OWNER IS RESPONSIBLE TO MAINTAIN THE PROTECTION OF  
 WATER-BASED FIRE PROTECTION SYSTEMS AND  
 LINES, COES AND BRANCHES, AND/OR LOCAL  
 ALL MECHANICAL, ELECTRICAL AND PLUMBING  
 TRADES TO COORDINATE THEIR WORK WITH  
 SPRINKLER CONNECTIONS.  
 ALL ELECTRICAL WORK IS TO BE DONE BY OTHERS.  
 HEAD LEGEND: 2, 0, 0, 0, 0  
 MODEL: 015601  
 68 / 7155  
 6-2-5-8  
 1/2" WHITE PIGEON  
 SEMI-RECESSED ESC.



1 FIRST FLOOR (WET)  
 TOTAL PROTECTED AREA 7,300 SQ.FT.  
 SCALE 1/4" = 1'-0"