

© 2014 RYAN SENATORE ARCHITECTURE

NEW ELEVATOR AND LOBBY
200 LANCASTER STREET
PORTLAND, MAINE



RYAN SENATORE ARCHITECTURE
565 CONGRESS STREET
PORTLAND, MAINE 04101
207-859-6414
senatorearchitecture.com

CONSULTANTS:
STRUCTURAL: Structural Integrity
77 Oak Street
Portland, ME 04101
207-774-4614

REVISIONS:

DATE: MARCH 11, 2014

PROJECT No. 1326

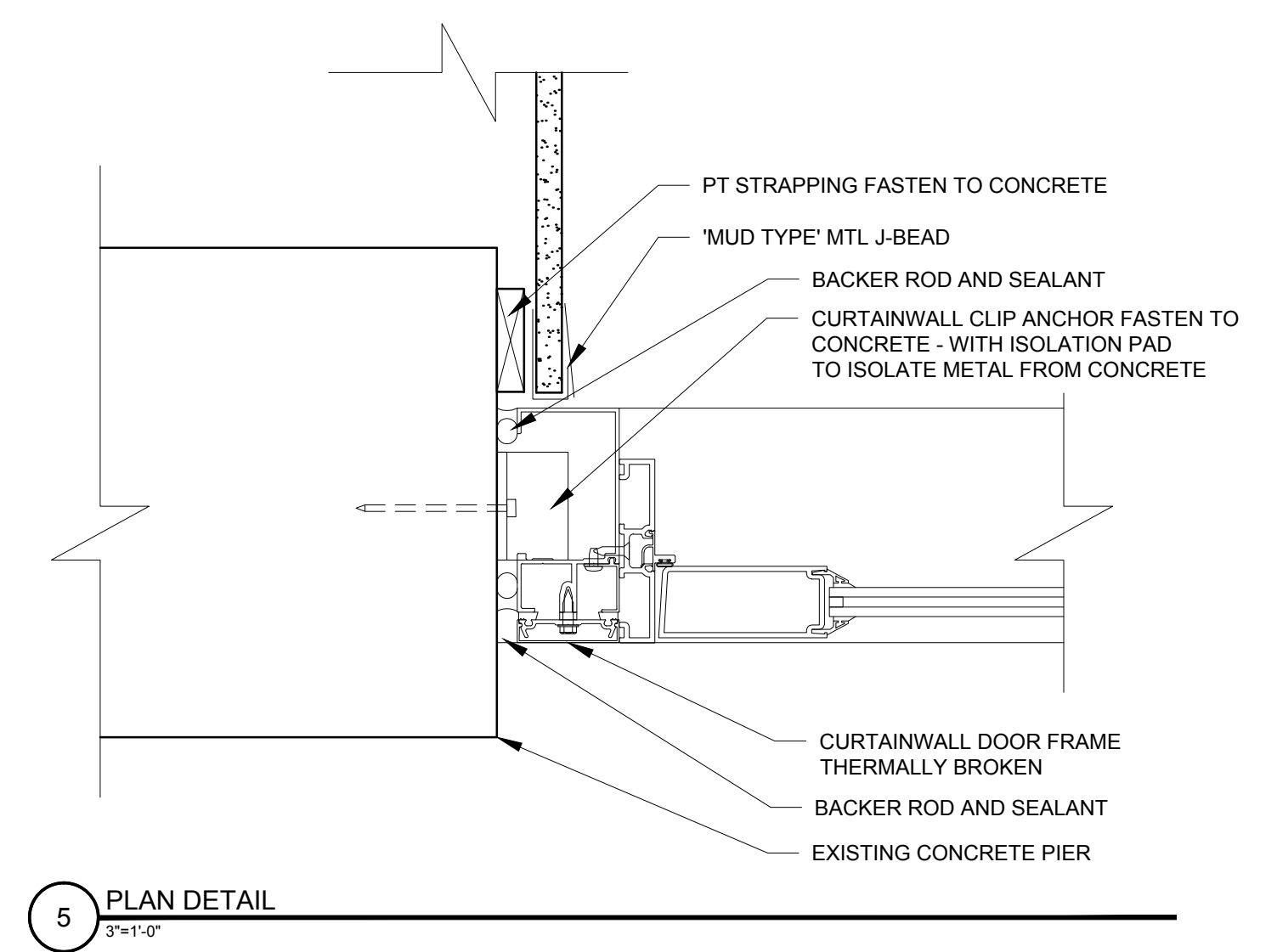
DRAWN BY:

CHECKED BY: RJS

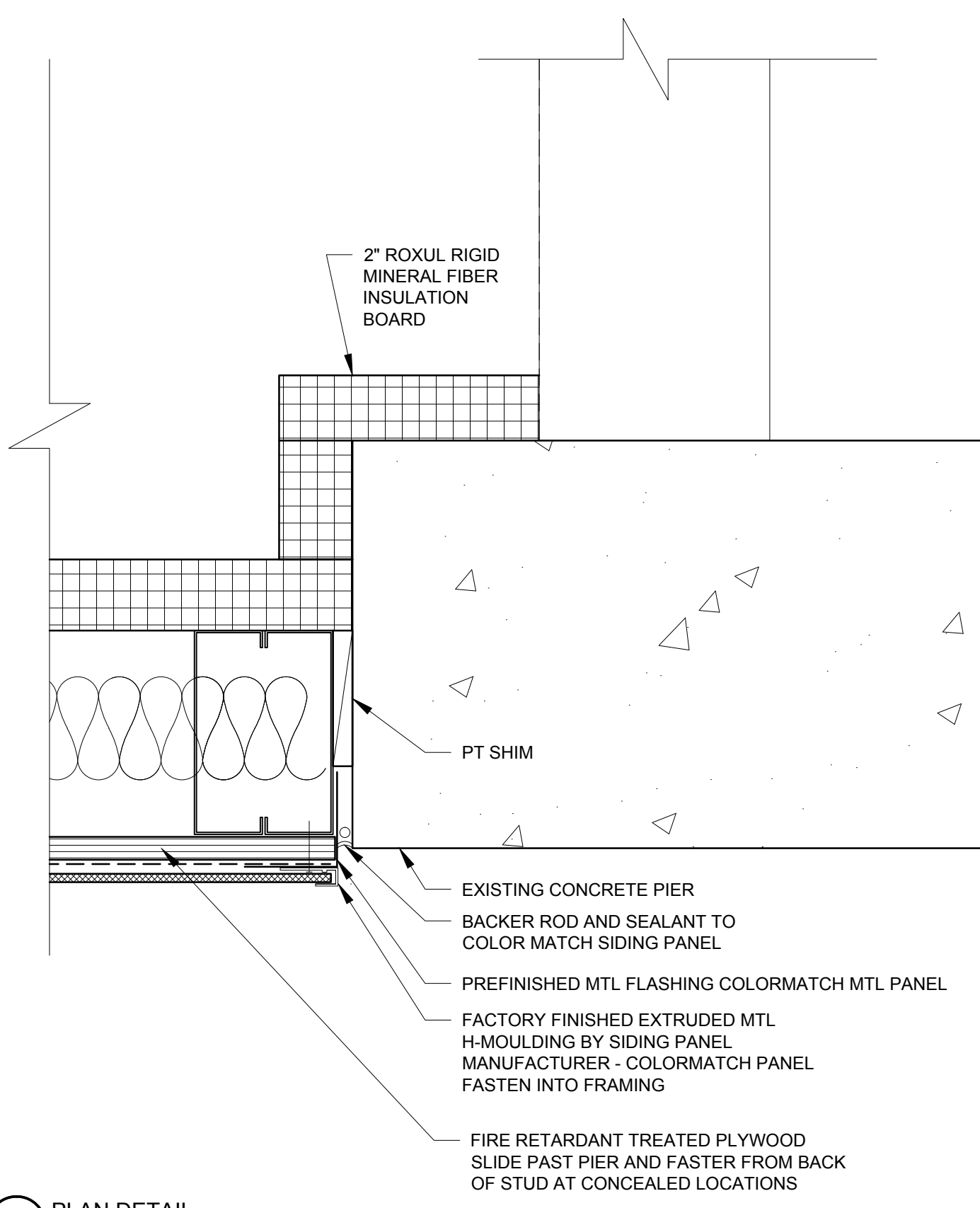
SCALE: AS NOTED

SHEET TITLE:
DETAILS

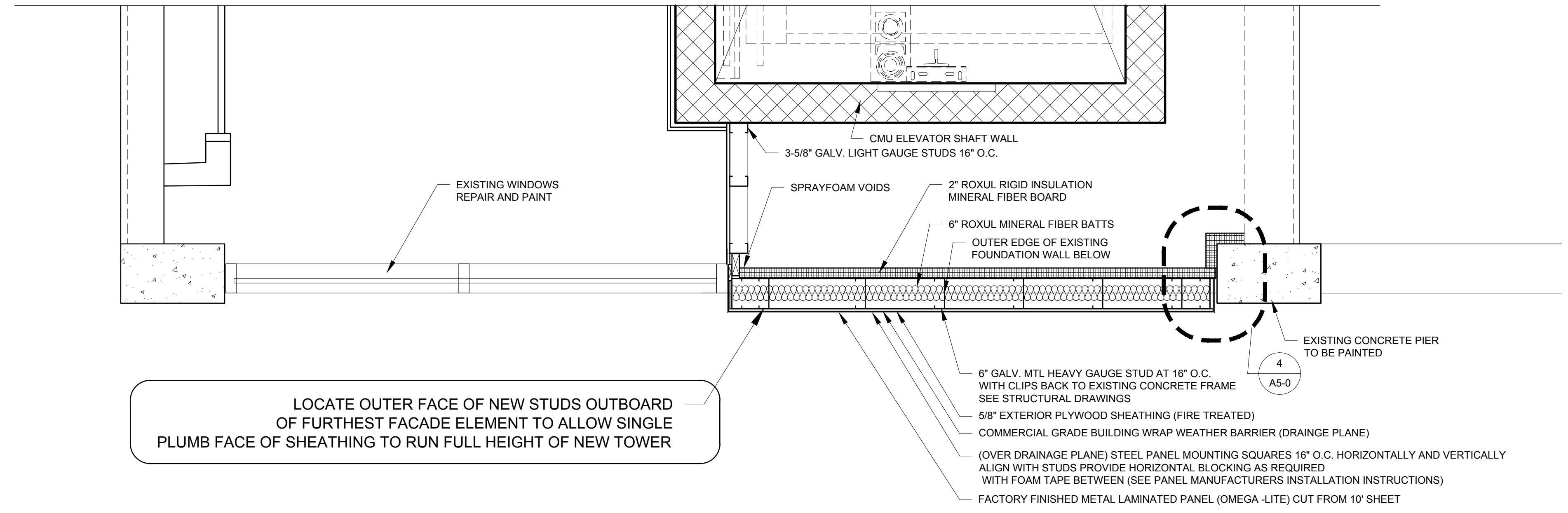
A5-0



5 PLAN DETAIL
3/4"=1'-0"

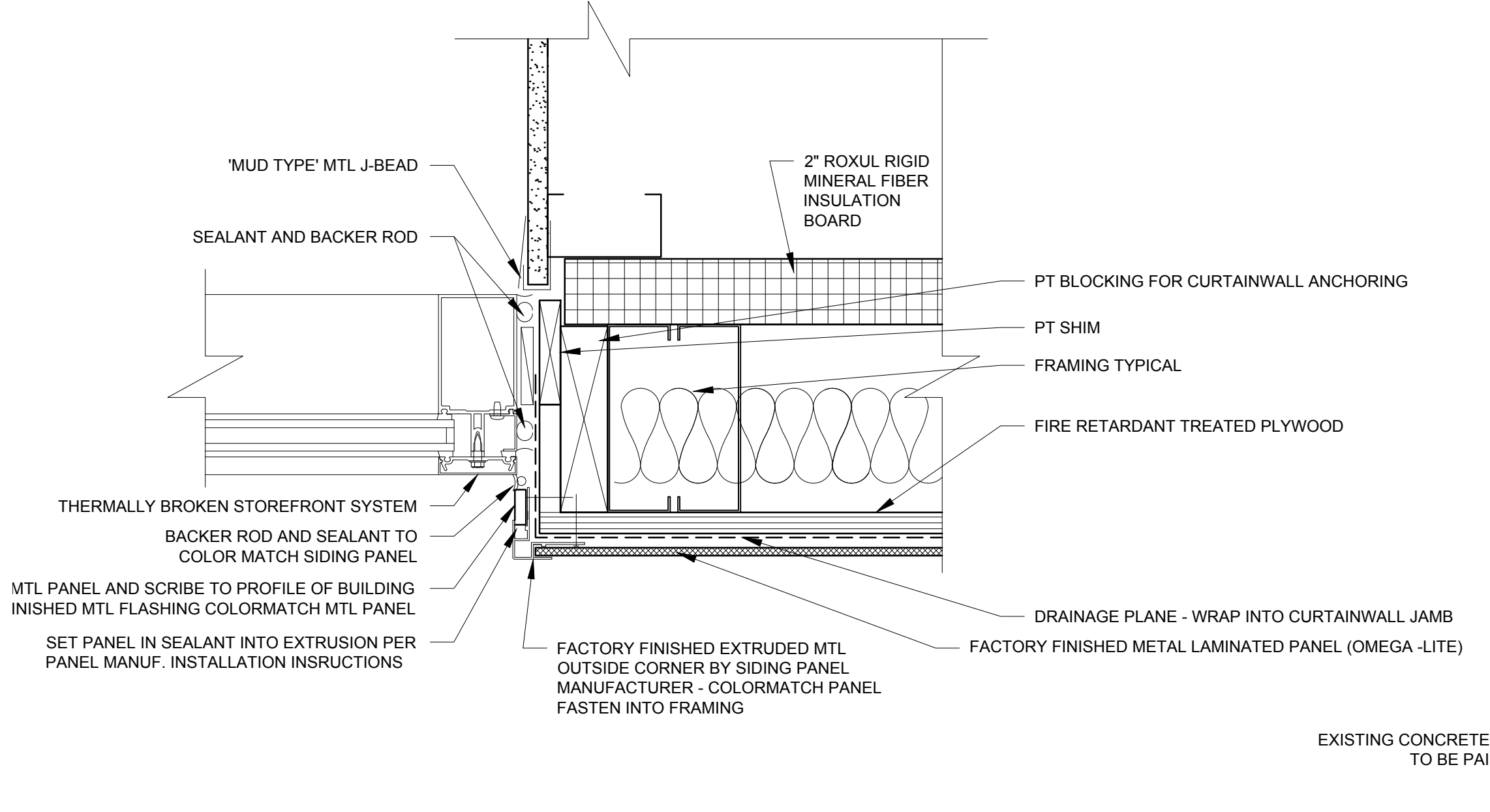


4 PLAN DETAIL
3/4"=1'-0"

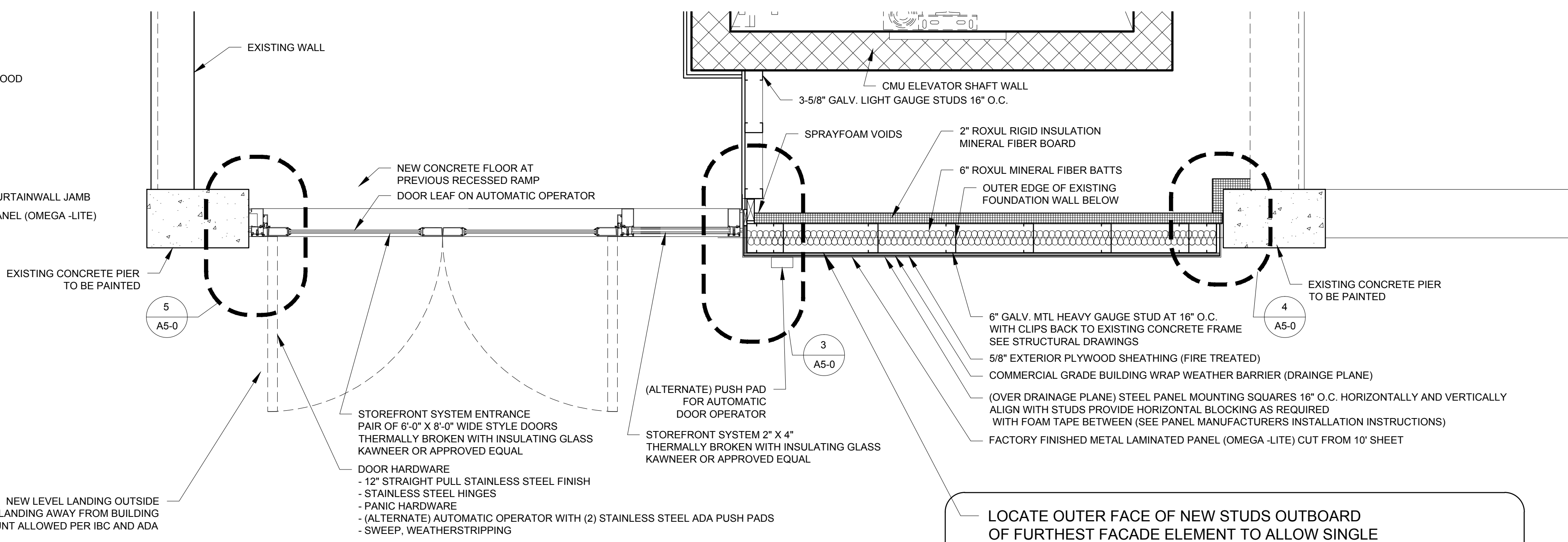


LOCATE OUTER FACE OF NEW STUDS OUTBOARD OF FURTHEST FACADE ELEMENT TO ALLOW SINGLE PLUMB FACE OF SHEATHING TO RUN FULL HEIGHT OF NEW TOWER

2 FACADE PLAN AT SECOND FLOOR (THIRD FLOOR)
3/4"=1'-0"



3 PLAN DETAIL
3/4"=1'-0"



LOCATE OUTER FACE OF NEW STUDS OUTBOARD OF FURTHEST FACADE ELEMENT TO ALLOW SINGLE PLUMB FACE OF SHEATHING TO RUN FULL HEIGHT OF NEW TOWER

1 FACADE PLAN AT FIRST FLOOR
3/4"=1'-0"

NEW LEVEL LANDING OUTSIDE DOOR, SLOPE LANDING AWAY FROM BUILDING MAXIMUM AMOUNT ALLOWED PER IBC AND ADA

DOOR HARDWARE
- 12\"/>

(ALTERNATE) PUSH PAD FOR AUTOMATIC DOOR OPERATOR
STOREFRONT SYSTEM 2\"/>

STOREFRONT SYSTEM ENTRANCE PAIR OF 6\"/>