

DRAINAGE STRUCTURE SCHEDULE

ALL CATCH BASIN PRECAST CONCRETE STRUCTURES SHALL BE 4'-0" DIAMETER (INSIDE).

CB#1
RIM: 10.75
INV. OUT (8"): 8.60

CB#2
RIM: 11.10
INV. IN (8"): 8.47
INV. OUT (12"): 8.37

CB#3
RIM: 10.80
INV. IN (12"): 8.07
INV. OUT (12"): 7.97

CB#4
RIM: 10.40
INV. IN (12"): 7.79
INV. OUT (12"): 7.69

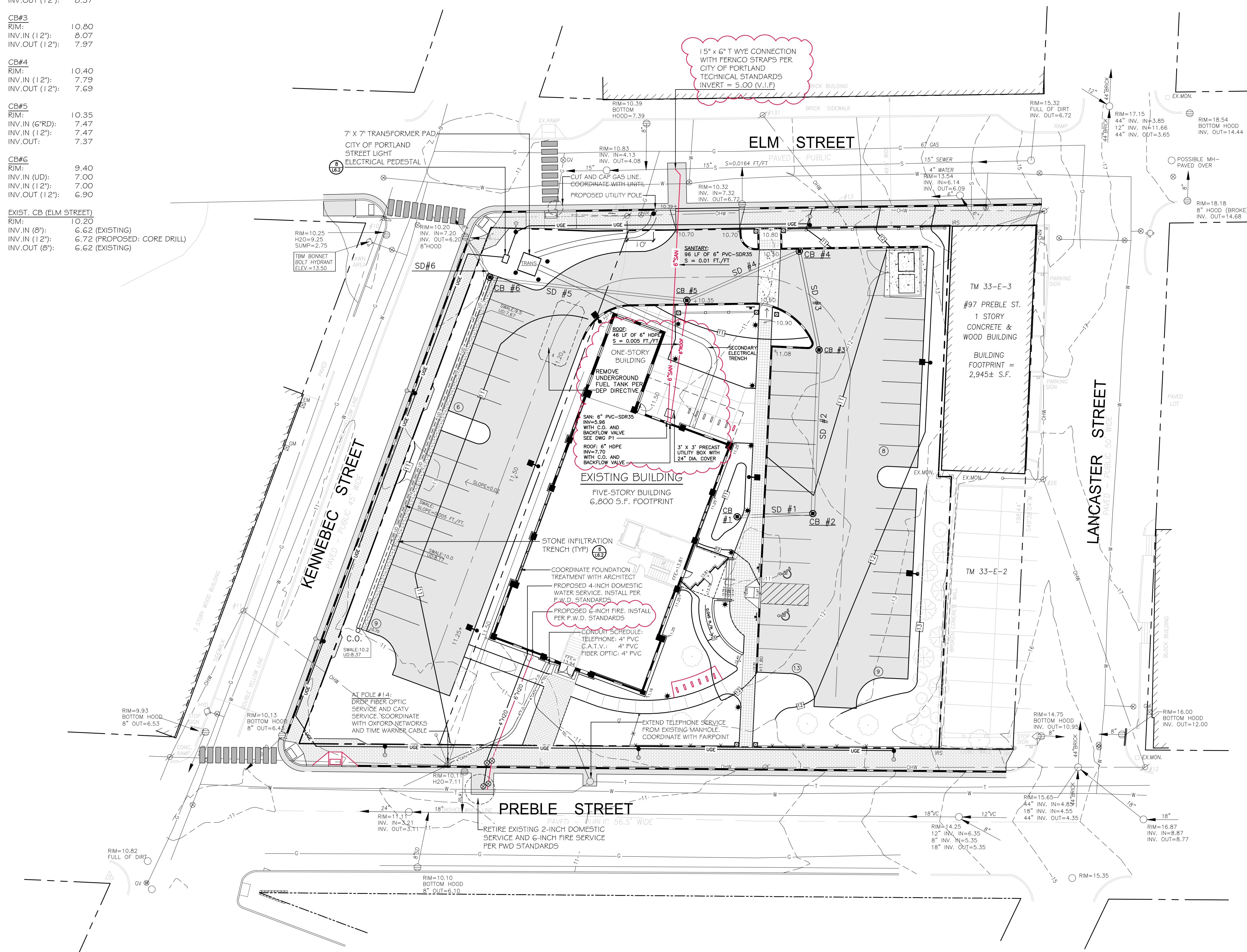
CB#5
RIM: 10.35
INV. IN (6"RD): 7.47
INV. IN (12"): 7.47
INV. OUT: 7.37

CB#6
RIM: 9.40
INV. IN (UD): 7.00
INV. IN (12"): 7.00
INV. OUT (12"): 6.90

EXIST. CB (ELM STREET)
RIM: 10.20
INV. IN (8"): 6.62 (EXISTING)
INV. IN (12"): 6.72 (PROPOSED: CORE DRILL)
INV. OUT (8"): 6.62 (EXISTING)

STORM DRAIN SCHEDULE

SD NO.	PIPE TYPE	LENGTH	SLOPE (FT/FT)
SD#1	8" HDPE	26 L.F.	0.005
SD#2	12" HDPE	60 L.F.	0.005
SD#3	12" HDPE	36 L.F.	0.005
SD#4	12" HDPE	44 L.F.	0.005
SD#5	12" HDPE	73 L.F.	0.005
SD#6	12" SDR-35	16 L.F.	0.005



GRADING AND DRAINAGE NOTES:

- DO NOT SCALE THESE DRAWINGS. ANY DISCREPANCIES BETWEEN DRAWINGS, DETAILS, NOTES AND SPECIFICATIONS SHALL BE IMMEDIATELY REPORTED TO THE LANDSCAPE ARCHITECT FOR FURTHER DIRECTION AND RESOLUTION BEFORE ADDITIONAL WORK PROCEEDS.
- CONTRACTOR SHALL VERIFY ALL DIMENSIONS AND GRADES ON THE GROUND. ANY DISCREPANCIES SHALL BE REPORTED IMMEDIATELY TO THE LANDSCAPE ARCHITECT FOR DIRECTION AND RESOLUTION PRIOR TO ANY FURTHER WORK.
- CONTRACTOR SHALL FIELD VERIFY LOCATION AND DEPTH OF ALL EXISTING UTILITIES WITH THE APPROPRIATE UTILITY COMPANIES PRIOR TO EXCAVATION OF OR INSTALLATION OF ANY PART OF THIS WORK.
- CONTRACTOR SHALL AVOID ALL AREAS NOT REQUIRING GRADING. CONTRACTOR SHALL NOT DISTURB THESE AREAS.
- THE UNDERGROUND UTILITIES SHOWN HAVE BEEN LOCATED FROM FIELD SURVEY INFORMATION AND EXISTING DRAWINGS. THE SURVEYOR MAKES NO GUARANTEES THAT THE UNDERGROUND UTILITIES SHOWN COMPRISE ALL SUCH UTILITIES IN THE AREA, EITHER IN SERVICE OR ABANDONED. THE SURVEYOR FURTHER DOES NOT WARRANT THAT THE UNDERGROUND UTILITIES SHOWN ARE IN THE EXACT LOCATION INDICATED ALTHOUGH HE DOES CERTIFY THAT THEY ARE LOCATED AS ACCURATELY AS POSSIBLE FROM INFORMATION AVAILABLE. THE SURVEYOR HAS NOT PHYSICALLY LOCATED THE UNDERGROUND UTILITIES. CALL DIGSAFE (1-888-344-7233) AT LEAST THREE BUSINESS DAYS BEFORE PERFORMING ANY CONSTRUCTION.
- CONTRACTOR SHALL CONDUCT TEST PIT EXCAVATION TO CONFIRM LOCATION OF EXISTING UTILITIES WHERE NEW UNDERGROUND ELECTRICAL, TELEPHONE AND CATV SERVICES ARE PROPOSED.
- WHERE STORM DRAINS OR SEWER MAINS HAVE LESS THAN FOUR (4) FEET OF COVER BETWEEN TOP OF PIPE AND FINISH GRADE, INSULATE PIPE USING TWO (2) INCH THICK STYROFOAM INSULATION BOARD OVER AND ALONG SIDES OF THE PIPE.
- EXISTING DRAINAGE CATCHBASIN SHALL BE CORED TO ACCEPT NEW DRAINAGE PIPE AS NOTED.
- PIPE LENGTH EQUALS THE CENTER TO CENTER DISTANCES BETWEEN CATCH BASINS AND/OR MANHOLES MINUS ONE-HALF OF THE DIAMETER OF EACH CATCH BASIN OR MANHOLE.
- ALL UTILITIES SHALL BE INSTALLED IN CONFORMANCE WITH INDIVIDUAL UTILITY DISTRICT REQUIREMENTS; CONTRACTOR SHALL COORDINATE INSTALLATION WITH APPROPRIATE UTILITY DISTRICT BEFORE INSTALLATION.
- ALL WORK WITHIN THE ROAD RIGHT-OF-WAY AND ALL UTILITIES CONNECTING TO INFRASTRUCTURE WITHIN THE ROAD SHALL MEET CITY OF PORTLAND TECHNICAL MANUAL STANDARDS.
- DISCONTINUED UTILITY SERVICES INCLUDING WATER, GAS AND SANITARY SEWER SHALL BE PERMANENTLY CAPPED CONFORMING TO UTILITY COMPANY AND CITY OF PORTLAND STANDARDS, CONTRACTOR SHALL COORDINATE WITH PUBLIC SERVICES AND/OR UTILITY COMPANY.
- THE PROJECT BENCH MARK IS BONNET BOLT OF FIRE HYDRANT LOCATED AT INTERSECTION OF ELM STREET AND KENNEBEC STREET. BENCHMARK ELEVATION: 13.50.
- BMP INSPECTIONS: THE OWNER SHALL HIRE A QUALIFIED POST-CONSTRUCTION STORMWATER INSPECTOR TO ANNUALLY, INSPECT THE BMPs, INCLUDING CATCH BASIN, DRYWELL, IN-LINE ROOF FILTERS, PIPES AND RELATED STRUCTURES, IN ACCORDANCE WITH ALL MUNICIPAL AND STATE INSPECTION, CLEANING AND MAINTENANCE REQUIREMENTS OF THE APPROVED POST-CONSTRUCTION STORMWATER MANAGEMENT PLAN (PER SECTION 32 OF THE CITY OF PORTLAND CODE OF ORDINANCES).
- SITE LIGHTING SHALL MEET THE CITY OF PORTLAND STANDARDS AS OUTLINED IN SECTION 12 OF THE CITY OF PORTLAND TECHNICAL DESIGN STANDARDS. SITE LIGHTING SHALL ADHERE TO SECTION 12.2.5 LIGHT TRESPASS-LIGHTING SHALL NOT BE GREATER THAN 0.1 FOOTCANDLES AT THE PROPERTY LINE.

LEGEND	EXISTING	PROPOSED
PROPERTY LINE	[Symbol]	[Symbol]
IRON PIPE OR ROD FOUND	[Symbol]	[Symbol]
MONUMENT FOUND	[Symbol]	[Symbol]
UTILITY POLE	[Symbol]	[Symbol]
MANHOLE	[Symbol]	[Symbol]
ELECTR/GAS METER	[Symbol]	[Symbol]
SIGN	[Symbol]	[Symbol]
CATCH BASIN	[Symbol]	[Symbol]
HYDRANT	[Symbol]	[Symbol]
WATER VALVE	[Symbol]	[Symbol]
LIGHT POLE	[Symbol]	[Symbol]
FENCE	[Symbol]	[Symbol]
GRANITE CURB	[Symbol]	[Symbol]
OVERHEAD WIRES	[Symbol]	[Symbol]
WATER LINE	[Symbol]	[Symbol]
GAS LINE	[Symbol]	[Symbol]
TELEPHONE	[Symbol]	[Symbol]
STORM DRAIN	[Symbol]	[Symbol]
SANITARY SEWER	[Symbol]	[Symbol]
1' CONTOUR	[Symbol]	[Symbol]
BRICK PAVERS	[Symbol]	[Symbol]
CONCRETE PAVERS	[Symbol]	[Symbol]
GRANITE PILLAR	[Symbol]	[Symbol]
CLEANOUT	[Symbol]	[Symbol]
STONE INFILTRATION TRENCH	[Symbol]	[Symbol]
SECONDARY ELECTRIC (FOR CITY LIGHTS)	[Symbol]	[Symbol]

Prepared For:
Owner and Applicant:
SCHLOTTERBECK BLOCK L.L.C.
104 Grant Street
Portland, Maine 04101
Tel.: 207-650-8979

Prepared By:
MITCHELL & ASSOCIATES
Landscape Architects
70 Center Street
Portland, Maine 04101
Tel.: 207-774-4247

RANSOM CONSULTING ENGINEERS
400 Commercial Street # 4
Portland, Maine 04101
Phone: 207-773-2891

GODUTI-THOMAS ARCHITECTS
44 Oak Street # 2
Portland, Maine 04101
Phone: 207-775-3184

The Schlotterbeck Block
Portland, Maine
117 Preble Street

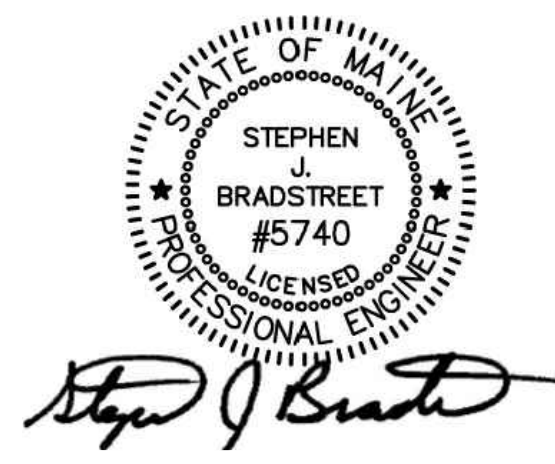
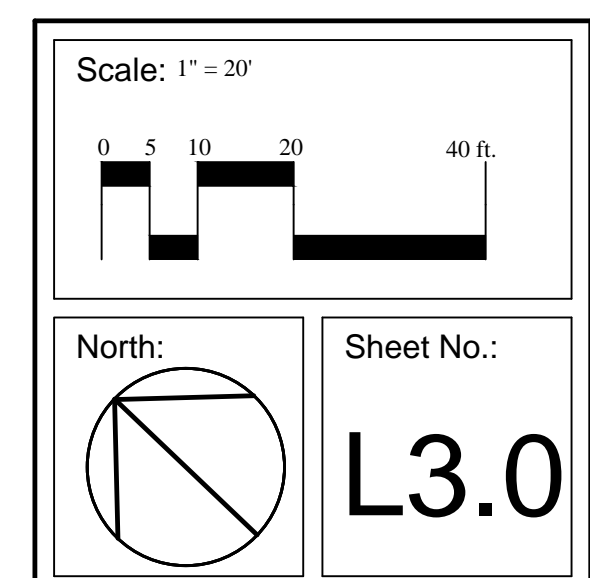
Date: OCTOBER 5, 2015

Issued For:

Revisions:
DEC. 1, 2015: REVISED PER STAFF REVIEW COMMENTS
DEC. 10, 2015: REVISED PER STAFF REVIEW COMMENTS
FEB. 25, 2016: REVISED PER CONDITIONS OF APPROVAL
APR. 5, 2016: AMENDED SUBDIVISION AND SITE PLAN SUBMISSION

Reproduction or reuse of this document without the expressed written consent of Mitchell & Associates is prohibited. © 2016

Title: **GRADING, DRAINAGE AND UTILITIES PLAN**



PERMITTING DRAWINGS -- NOT FOR CONSTRUCTION

I:\Projects\Drawings\2011\Preble_Sheet16.022_Rev.mxd 4/5/2016 2:44 PM