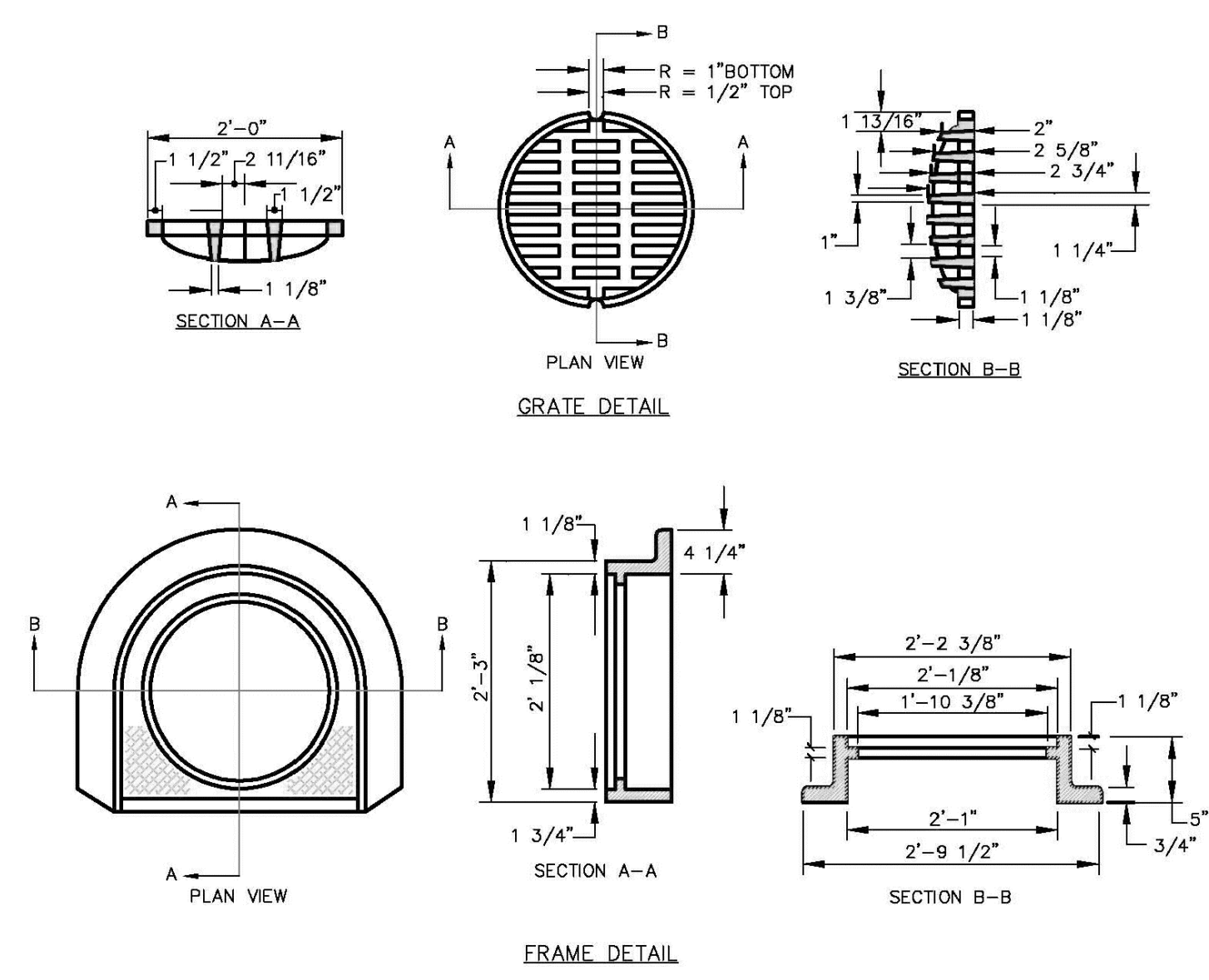


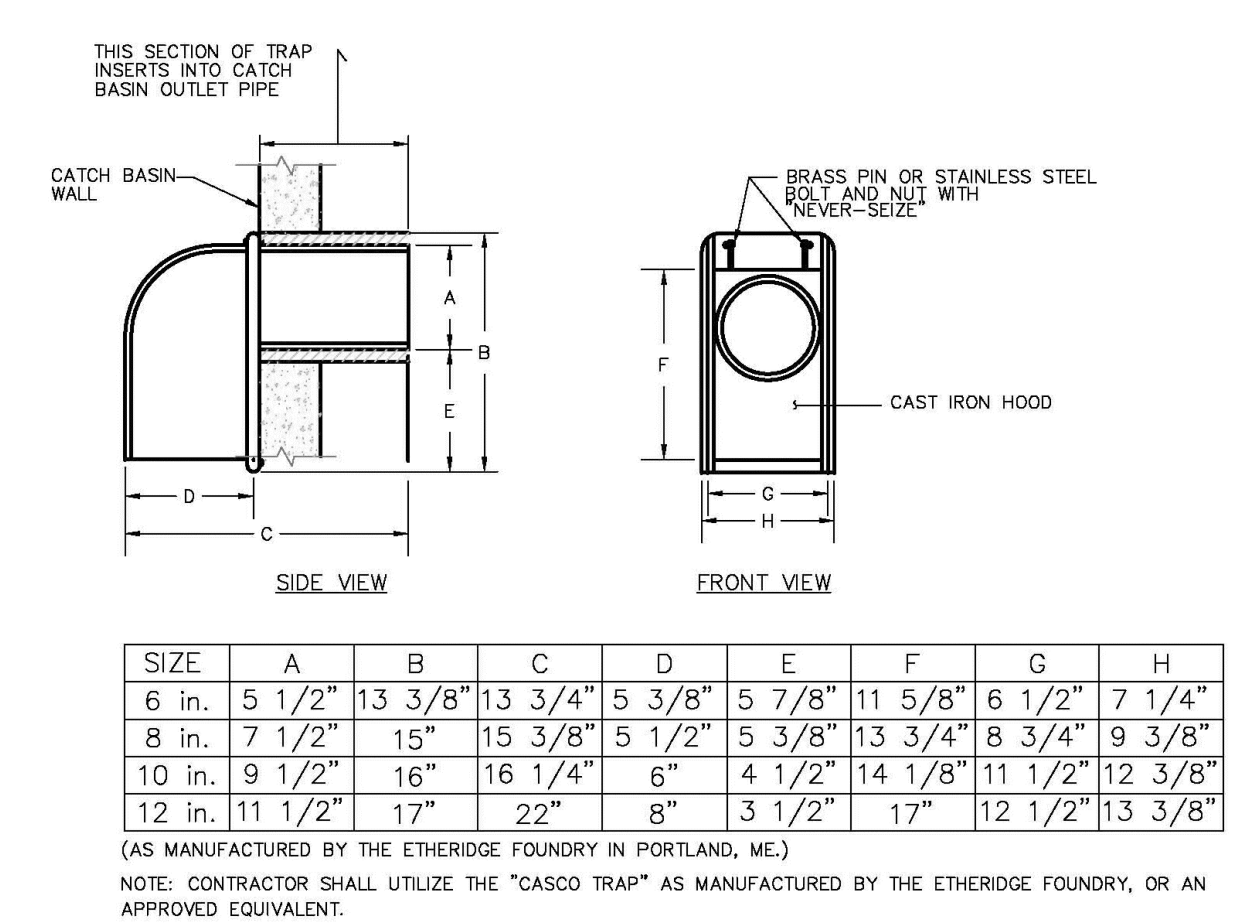
GENERAL NOTES FOR MANHOLES AND CATCH BASINS

- ALL CONCRETE SHALL HAVE A MINIMUM ULTIMATE COMPRESSIVE STRENGTH OF 4000 PSI PER 50 INCH AT THE END OF 28 DAYS, UNLESS OTHERWISE NOTED.
- MANHOLES MAY BE CONSTRUCTED OF PRECAST REINFORCED CONCRETE, OR CAST IN PLACE.
- PRECAST REINFORCED CONE BARREL MANHOLES PER ASTM SPEC. C-478.
- ALL STORM AND SEWER MANHOLE COVERS SHALL BE SOLID AND SHALL HAVE ONE 7/8" DIAMETER DRILLED PICK HOLE LOCATED 9" FROM THE CENTER OF THE COVER.
- ALL SANITARY MANHOLE COVERS SHALL HAVE "SEWER" CAST INTO THE COVER. ALL STORMWATER/RAIN MANHOLE COVERS SHALL HAVE "RAIN" CAST INTO THE COVER.
- ALL MANHOLE RISERS SHALL BE EITHER 24" OR APPROVED EQUAL.
- SEWER BRICK SHALL CONFORM TO ASTM SPEC. DESIGNATE ON C-32-63, GRADE, WA AND SA.
- ALL SANITARY MANHOLES SHALL HAVE A WATERPROOFING COATING APPLIED TO THE EXTERIOR SURFACE.
- CATCH BASIN FRAMES FOR TYPE A4 CATCH BASIN CURB SLEETS SHALL BE EITHER DRAIN OR APPROVED EQUAL.
- CASTINGS SHALL CONFORM TO ASTM DESIGNATION A48-CLASS 35.
- EXISTING MANHOLES, CATCH BASINS, FRAMES, AND COVERS SHALL BE SALVAGED BY THE CONTRACTOR, AND SHALL REMAIN THE PROPERTY OF THE CITY OF PORTLAND.
- ALL CATCH BASIN OUTLETS SHALL BE INSTALLED WITH A CASCO TRAP. SEE FIGURE FOR.

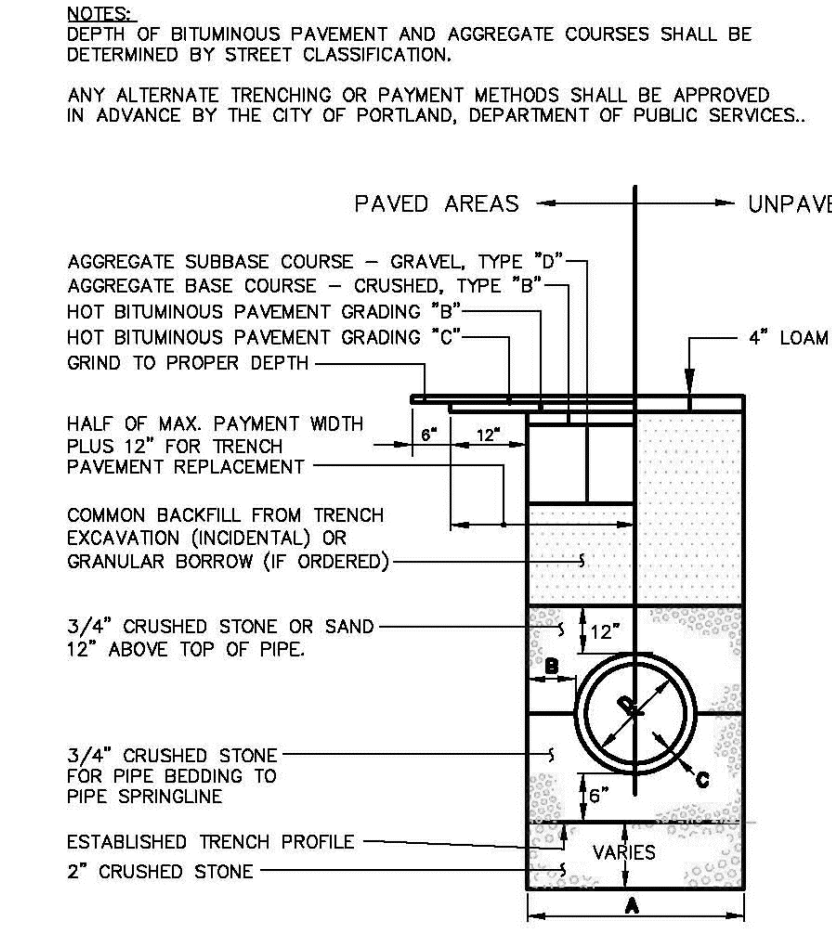
1 PRECAST CONCRETE CATCHBASIN
NOT TO SCALE



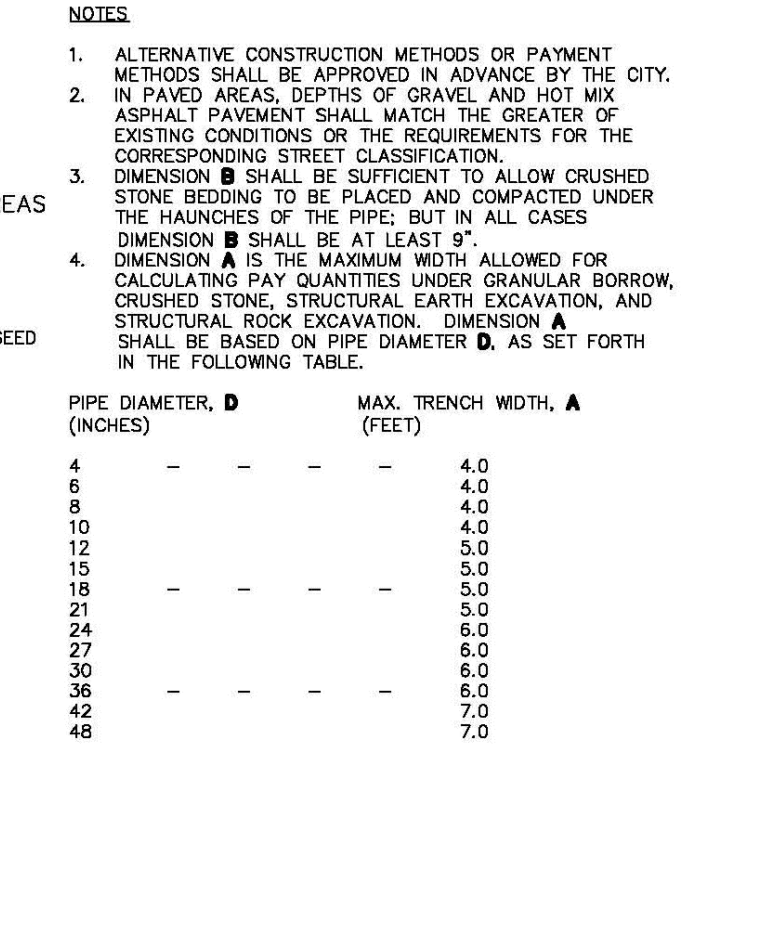
2 CAST IRON CATCH BASIN COVER AND FRAME
NOT TO SCALE



3 CASCO TRAP (ALL CATCHBASIN DRAINAGE STRUCTURES)
NOT TO SCALE

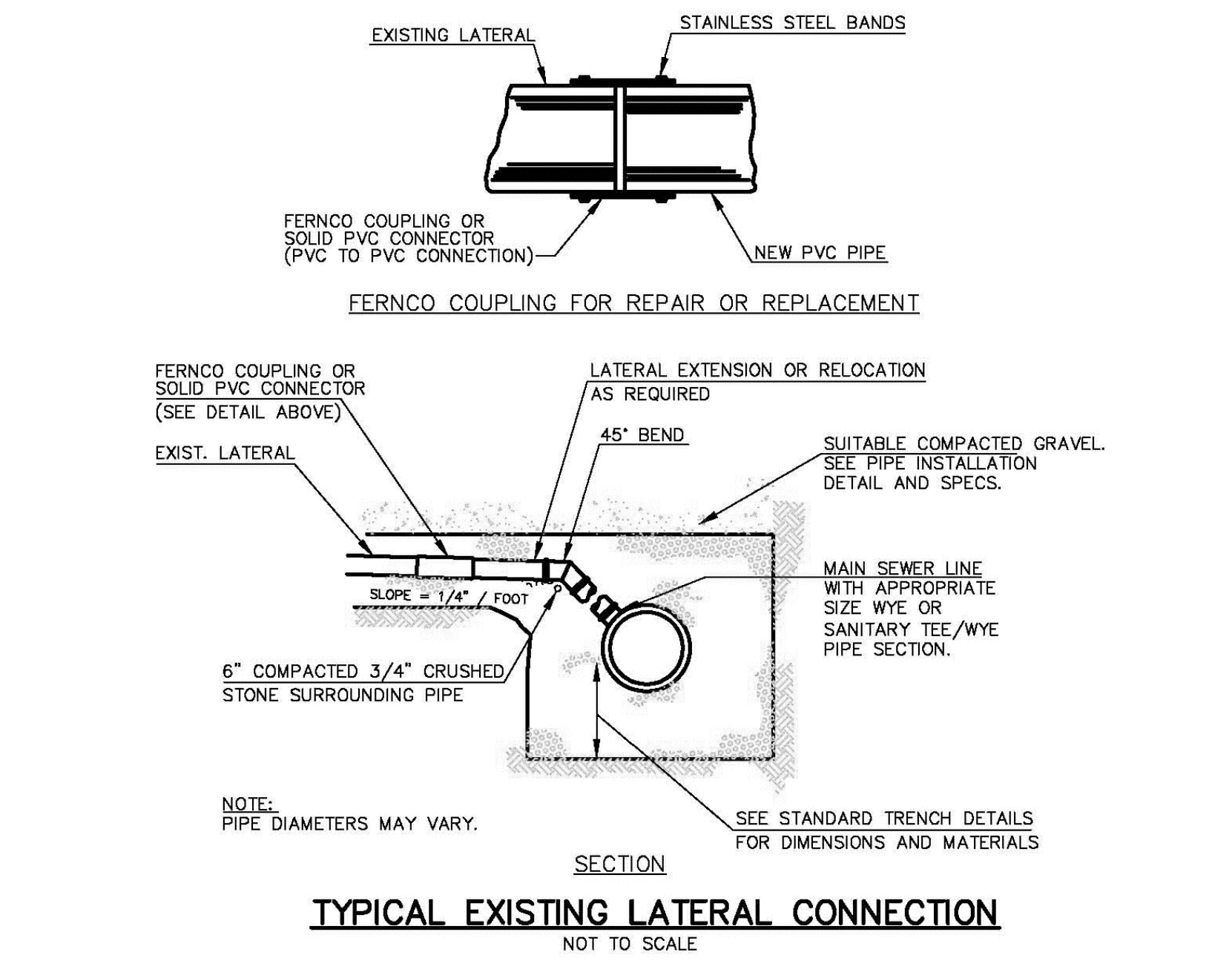
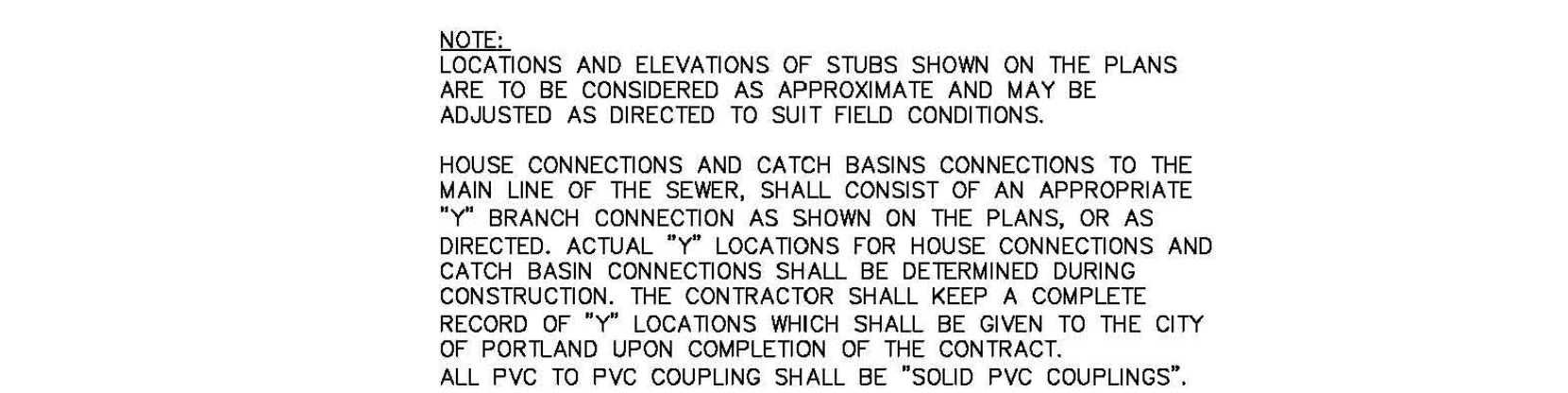


4 TYPICAL PIPE TRENCH INSTALLATION
NOT TO SCALE

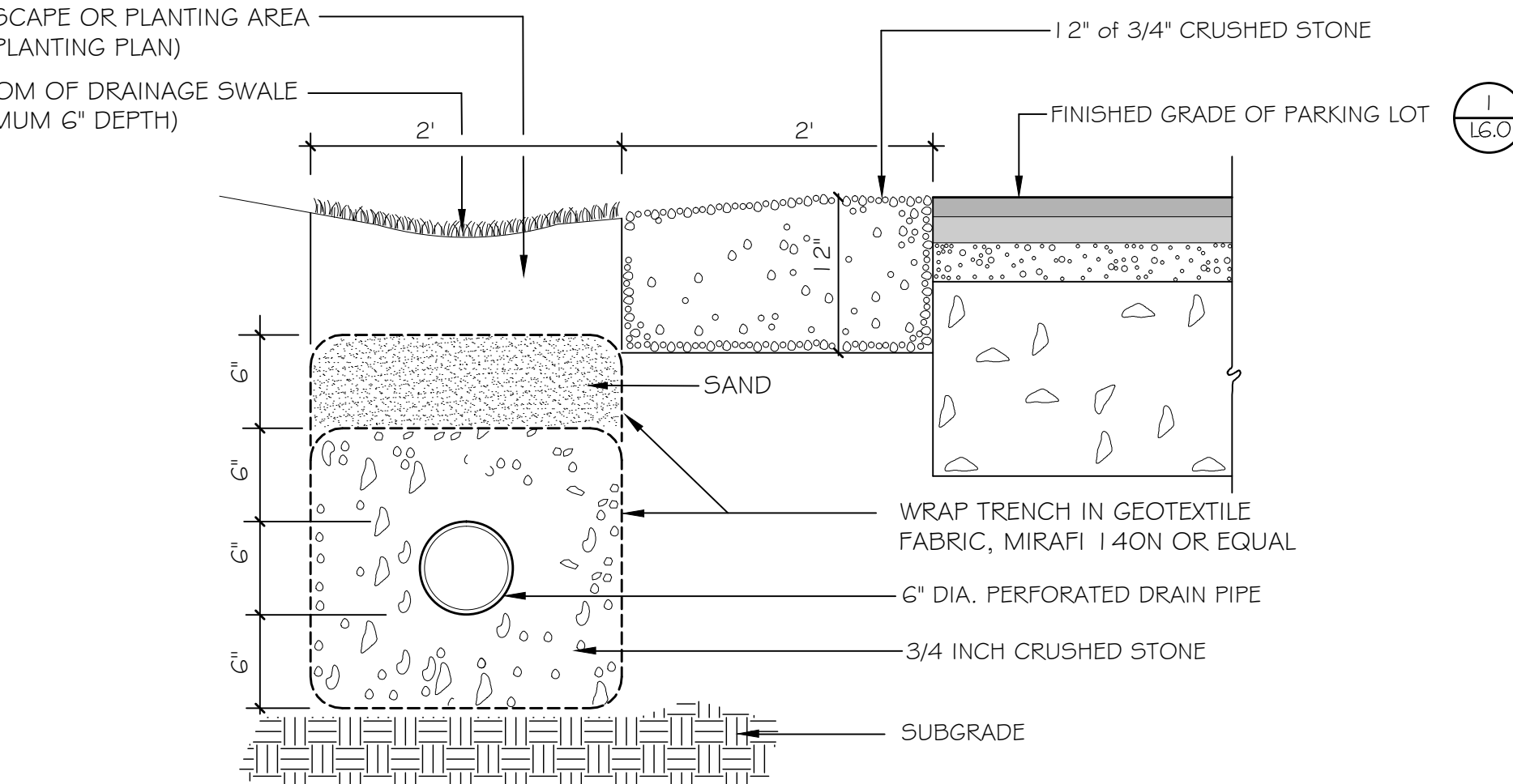


5 TYPICAL PIPE INSTALLATION - NOTES
NOT TO SCALE

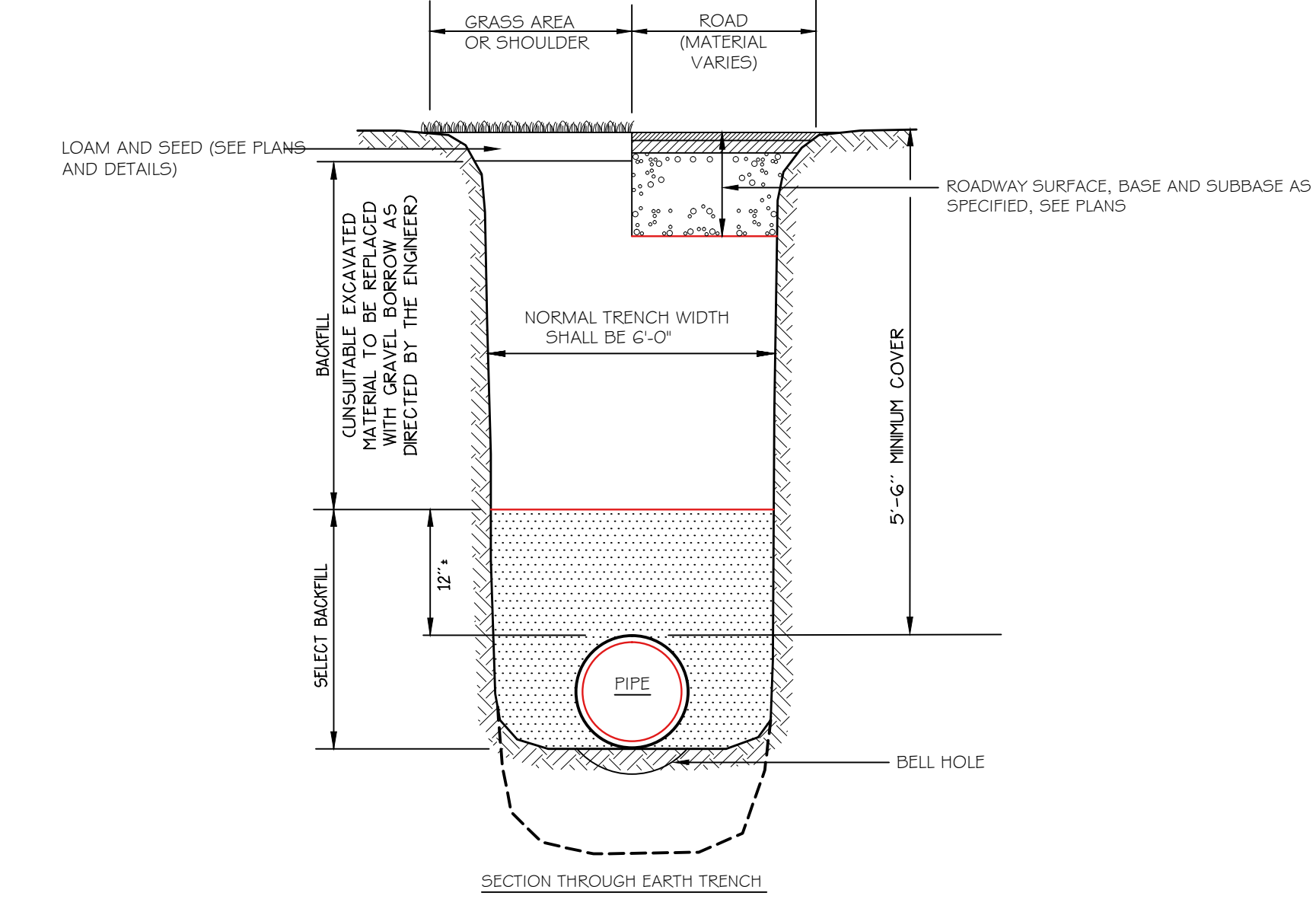
4 CITY OF PORTLAND TRENCH DETAIL
NOT TO SCALE



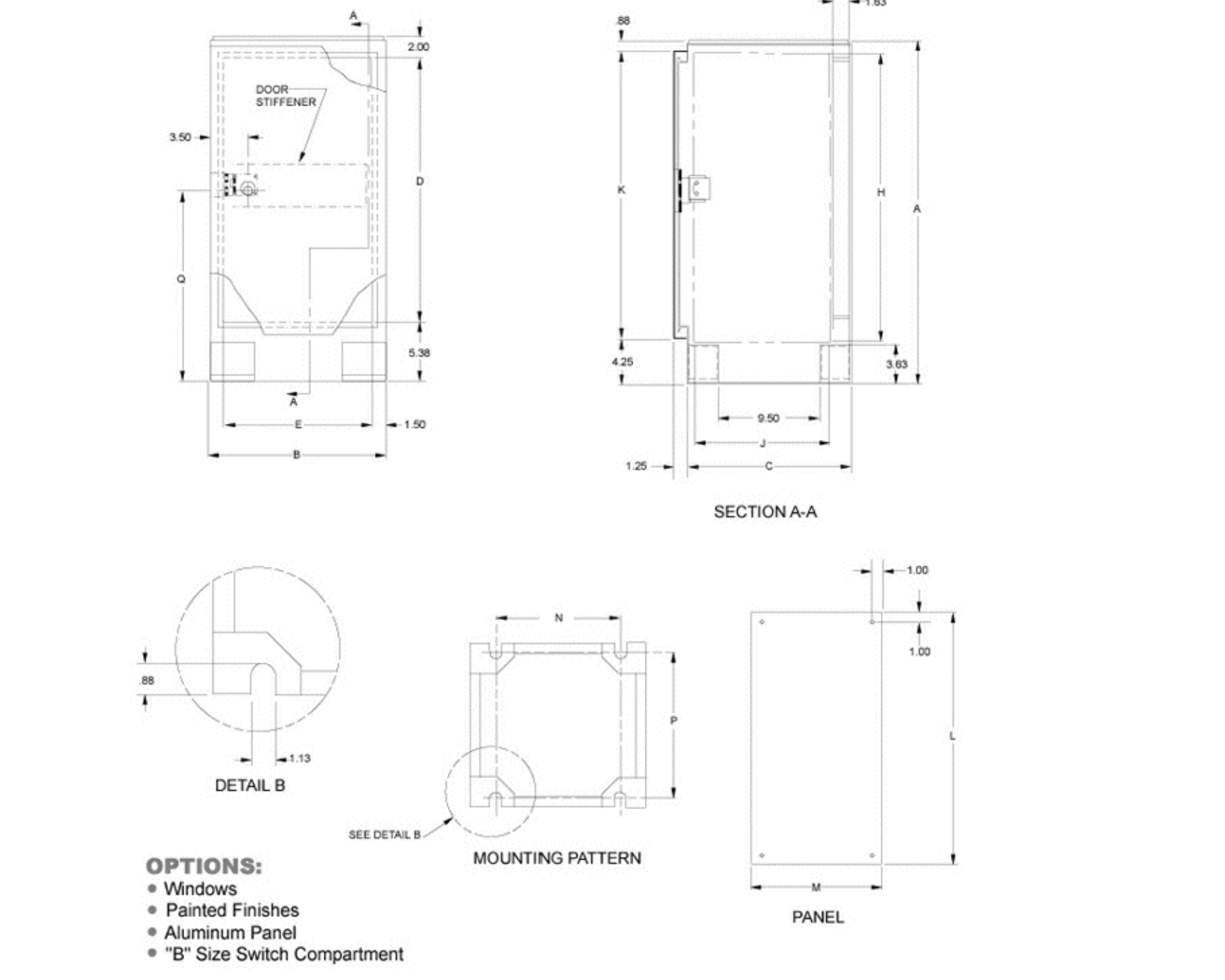
5 CITY OF PORTLAND LATERAL CONNECTION DETAIL
NOT TO SCALE



6 SAND INFILTRATION TRENCH DETAIL
SCALE: 1" = 1'-0"



7 PORTLAND WATER DISTRICT PIPE TRENCH DETAIL
NOT TO SCALE



OPTIONS:

- Windows
- Painted Finishes
- Aluminum Panel
- "B" Size Switch Compartment

8 CITY OF PORTLAND STREET LIGHT PEDESTAL (TCPE40 | G | 15)
NOT TO SCALE



8 CITY OF PORTLAND STREET LIGHT PEDESTAL (TCPE40 | G | 15)
NOT TO SCALE

Prepared For:
Owner and Applicant:
SCHLOTTERBECK BLOCK L.L.C.
104 Grant Street
Portland, Maine 04101
Tel.: 207-650-8979

Prepared By:
MITCHELL & ASSOCIATES
Landscape Architects
70 Center Street
Portland, Maine 04101
Tel.: 207-774-4427

RANSOM CONSULTING ENGINEERS
400 Commercial Street # 4
Portland, Maine 04101
Phone: 207-772-2891

GODUTI-THOMAS ARCHITECTS
44 Oak Street # 2
Portland, Maine 04101
Phone: 207-775-3184

The Schlotterbeck Block
Portland, Maine
117 Preble Street

Date: OCTOBER 5, 2015

Issued For:

Revisions:
DEC. 1, 2015: REVISED PER STAFF REVIEW COMMENTS
DEC. 10, 2015: REVISED PER STAFF REVIEW COMMENTS
FEB. 25, 2016: REVISED PER CONDITIONS OF APPROVAL

Reproduction or reuse of this document without the expressed written consent of Mitchell & Associates is prohibited.
© 2016

Title: SITE DETAILS

Scale: AS SHOWN

North: Sheet No.: **L6.2**

CITY OF PORTLAND APPROVED SITE PLAN
Subject to Conditions of Approval and Standard Conditions

DATE OF APPROVAL: 12.15.2015
PLANNER: Shukria Wiar
PROJECT NO.: 2015-174

STEPHEN J. BRADSTREET #5740
LICENSED PROFESSIONAL ENGINEER

PERMITTING DRAWINGS -- NOT FOR CONSTRUCTION