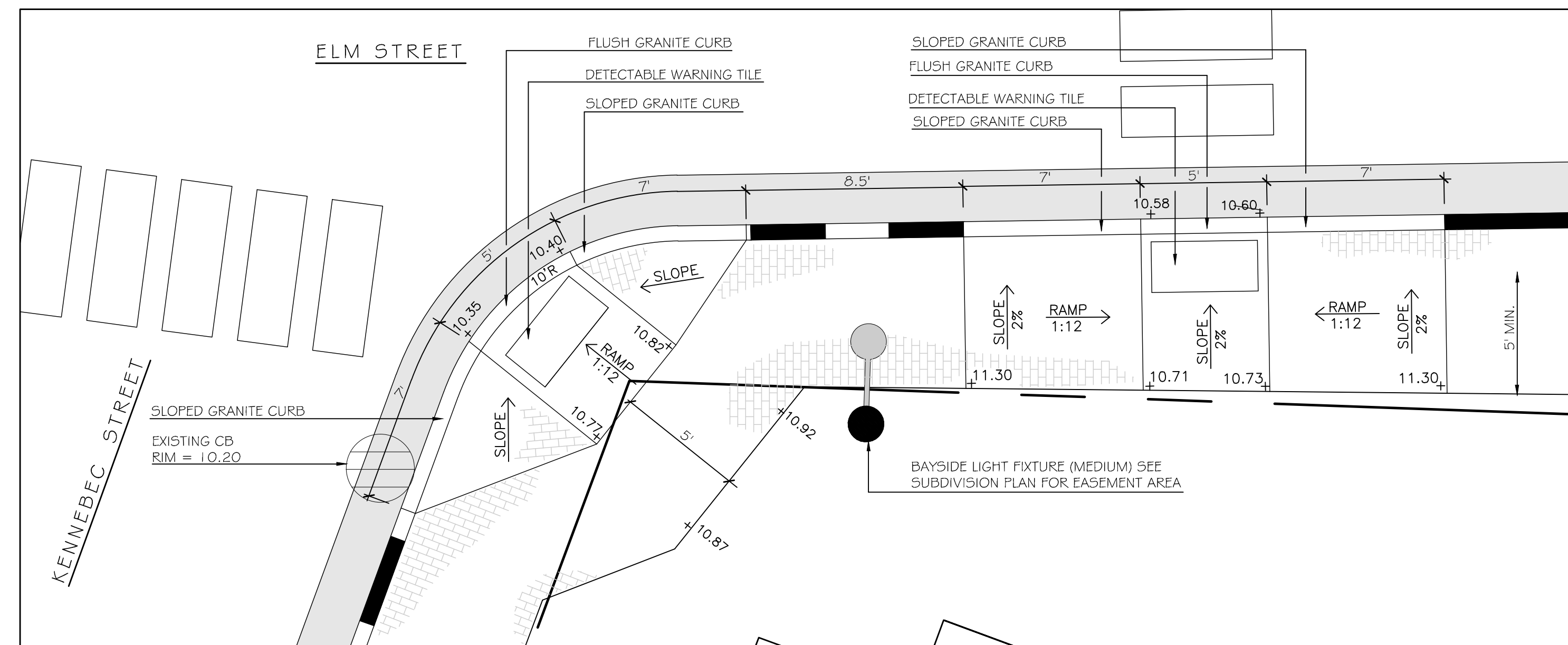
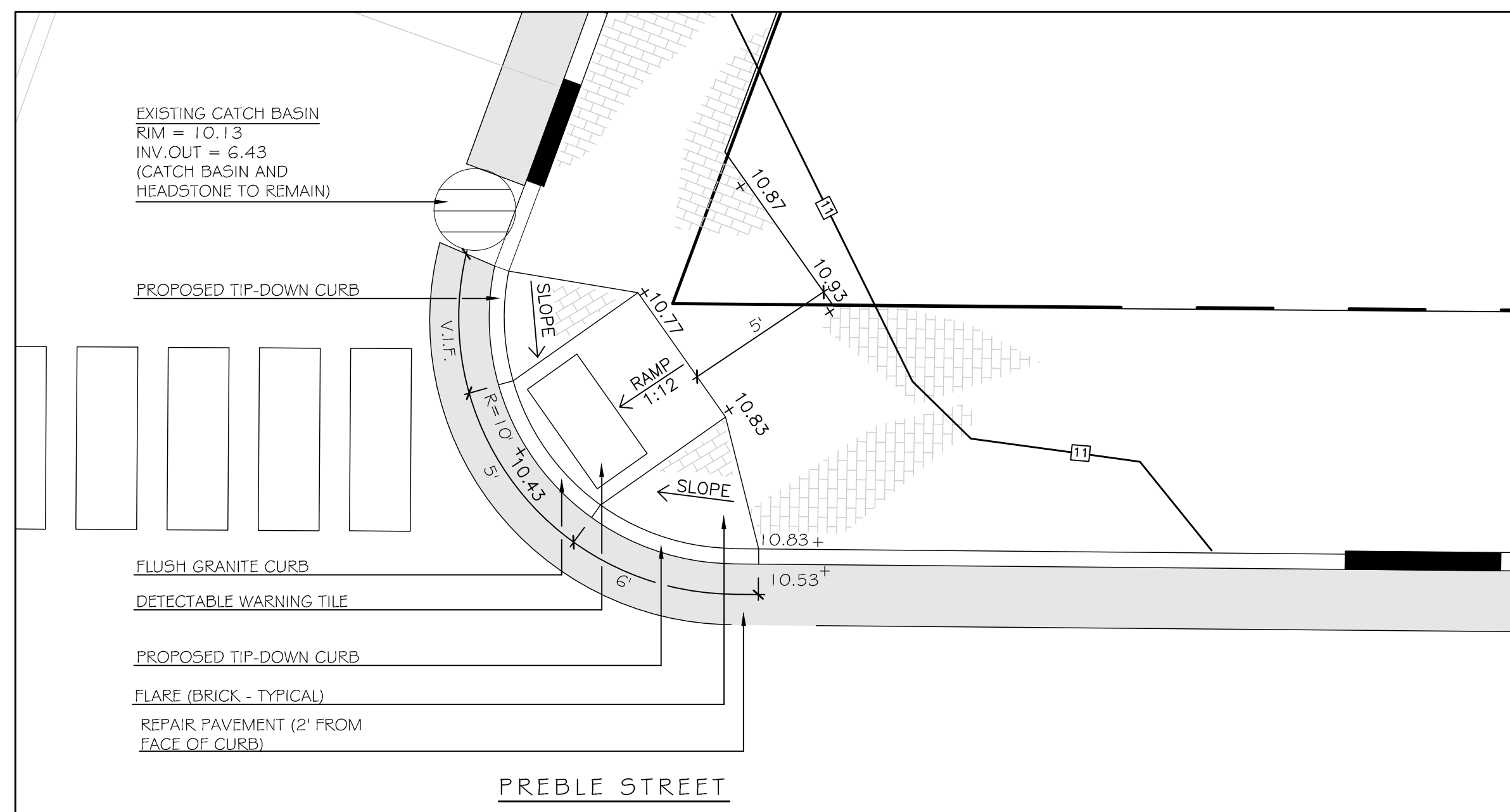


1
1/2" = 1' NOT TO SCALE
SIDEWALK RAMP: KENNEBEC STREET AND ELM

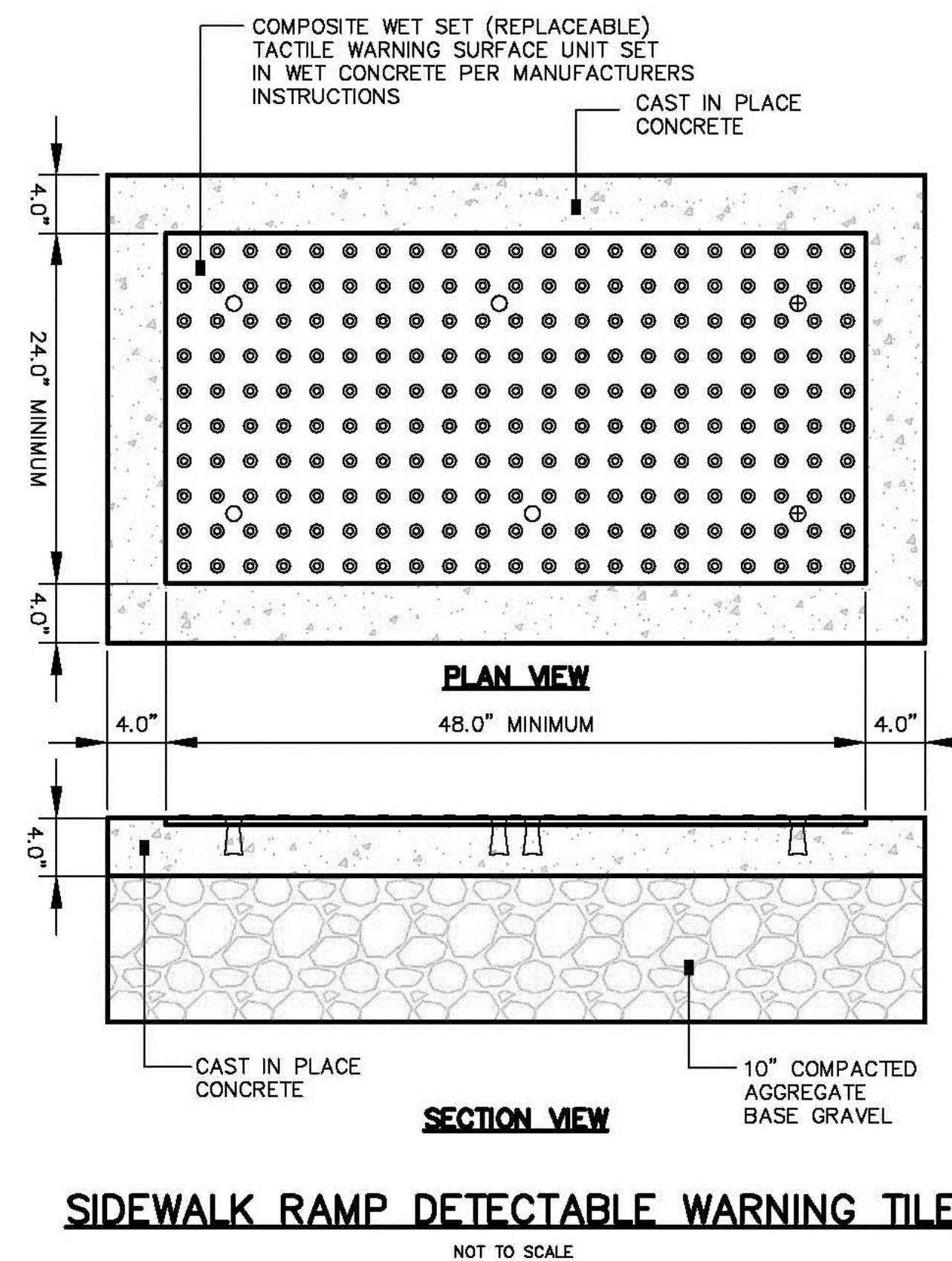


1/2" = 1' NOT TO SCALE
SIDEWALK RAMP: KENNEBEC STREET AND ELM

NOTE: CONTRACTOR SHALL COORDINATE WITH CITY OF PORTLAND AND OWNER'S REPRESENTATIVE BEFORE CONSTRUCTING CURB CUTS.



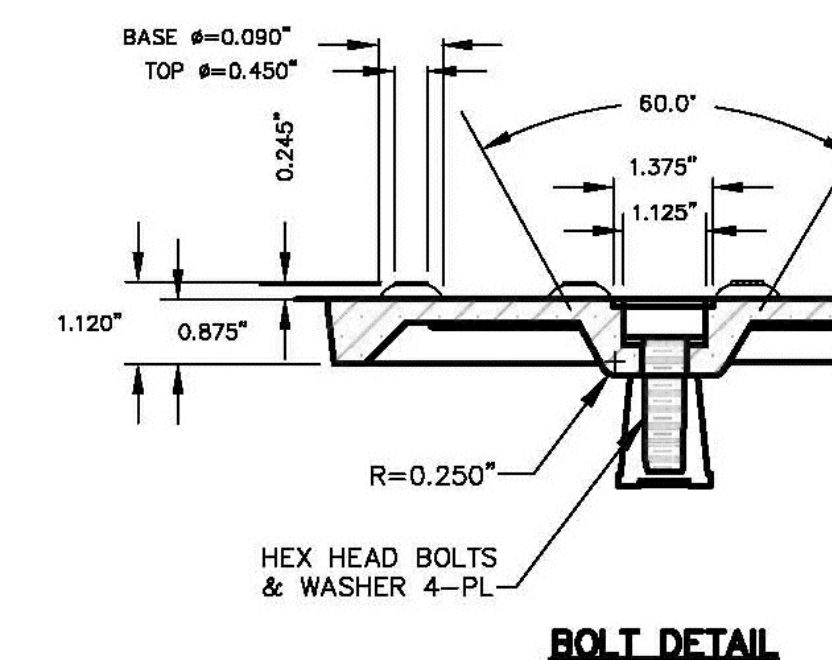
2
1/2" = 4' SCALE
SIDEWALK RAMP: KENNEBEC STREET AND PREBLE STREET (NORTH)



5
1/2" = 1' NOT TO SCALE
SIDEWALK RAMP DETECTABLE WARNING TILE

NOTES:

1. COMPOSITE WET SET (REPLACEABLE) TACTILE WARNING SURFACE UNITS SHALL BE AS MANUFACTURED BY ADA SOLUTIONS, INC. (WWW.ADATILE.COM), OR APPROVED EQUAL.
2. CAST IN PLACE CONCRETE SHALL MEET SPECIFICATIONS FOR MDT CLASS A STRUCTURAL CONCRETE, MINIMUM COMPRESSIVE STRENGTH 4,000 PSI. THE CONCRETE SHALL BE SEALED PRIOR TO SETTING PANELS. THE EXPOSED CONCRETE BORDER SHALL RECEIVE A GROOVED EDGE BETWEEN THE TILE AND CONCRETE, ALONG WITH A UNIFORM BROOM FINISH PERPENDICULAR TO THE FLOW OF PEDESTRIAN TRAFFIC.
3. TRUNCATED DOMES SHALL BE ALIGNED IN ROWS, PARALLEL AND PERPENDICULAR TO THE PREDOMINANT DIRECTION OF TRAVEL. TRUNCATED DOME BRICKS AND GRANITE PAVERS ARE NOT ALLOWED.
4. FOR ALL SIDEWALK RAMPS MADE OF CONCRETE OR ASPHALT, FEDERAL YELLOW COLORED (#33538) TILES SHALL BE USED. FOLLOW MANUFACTURER'S INSTRUCTIONS FOR INSTALLATION.
5. FOR ALL SIDEWALK RAMPS MADE OF BRICK, SEATTLE YELLOW (#23594) COATED COLORED TILES SHALL BE USED.



CITY OF PORTLAND
APPROVED SITE PLAN
Subject to Conditions of Approval
and Standard Conditions

DATE OF APPROVAL 12.15.2015

PLANNER Shukria Wiar

PROJECT NO. 2015-174



Prepared For:
Owner and Applicant:
SCHLOTTERBECK BLOCK L.L.C.
104 Grant Street
Portland, Maine 04101
Tel.: 207-650-8979

Prepared By:
MITCHELL & ASSOCIATES
Landscape Architects
70 Center Street
Portland, Maine 04101
Tel.: 207-774-4427

RANSOM CONSULTING ENGINEERS
400 Commercial Street # 4
Portland, Maine 04101
Phone: 207-772-2891

GODUTI-THOMAS ARCHITECTS
44 Oak Street # 2
Portland, Maine 04101
Phone: 207-775-3184

The Schlotterbeck Block
Portland, Maine
117 Preble Street

Date: OCTOBER 5, 2015

Issued For:

Revisions:

- DEC. 1, 2015: REVISED PER STAFF REVIEW COMMENTS
- DEC. 10, 2015: REVISED PER STAFF REVIEW COMMENTS
- FEB. 25, 2016: REVISED PER CONDITIONS OF APPROVAL

Reproduction or reuse of this document without the expressed written consent of Mitchell & Associates is prohibited. © 2016

Title: DETAIL SITE PLANS: SIDEWALK RAMPS

Scale: AS SHOWN

North: Sheet No.: L2.1