

Prepared For:
 Owner and Applicant:
SCHLOTTERBECK BLOCK L.L.C.
 77 Spruce Street
 Portland, Maine 04101
 Tel.: 207-650-8979

Prepared By:
MITCHELL & ASSOCIATES
 Landscape Architects
 70 Center Street
 Portland, Maine 04101
 Tel.: 207-774-4427

RANSOM CONSULTING ENGINEERS
 400 Commercial Street # 4
 Portland, Maine 04101
 Phone: 207-772-2891

GODUTI-THOMAS ARCHITECTS
 44 Oak Street # 2
 Portland, Maine 04101
 Phone: 207-775-3184

The Schlotterbeck Block

Portland, Maine

117 Preble Street



Date: OCTOBER 5, 2015

Issued For:

Revisions:

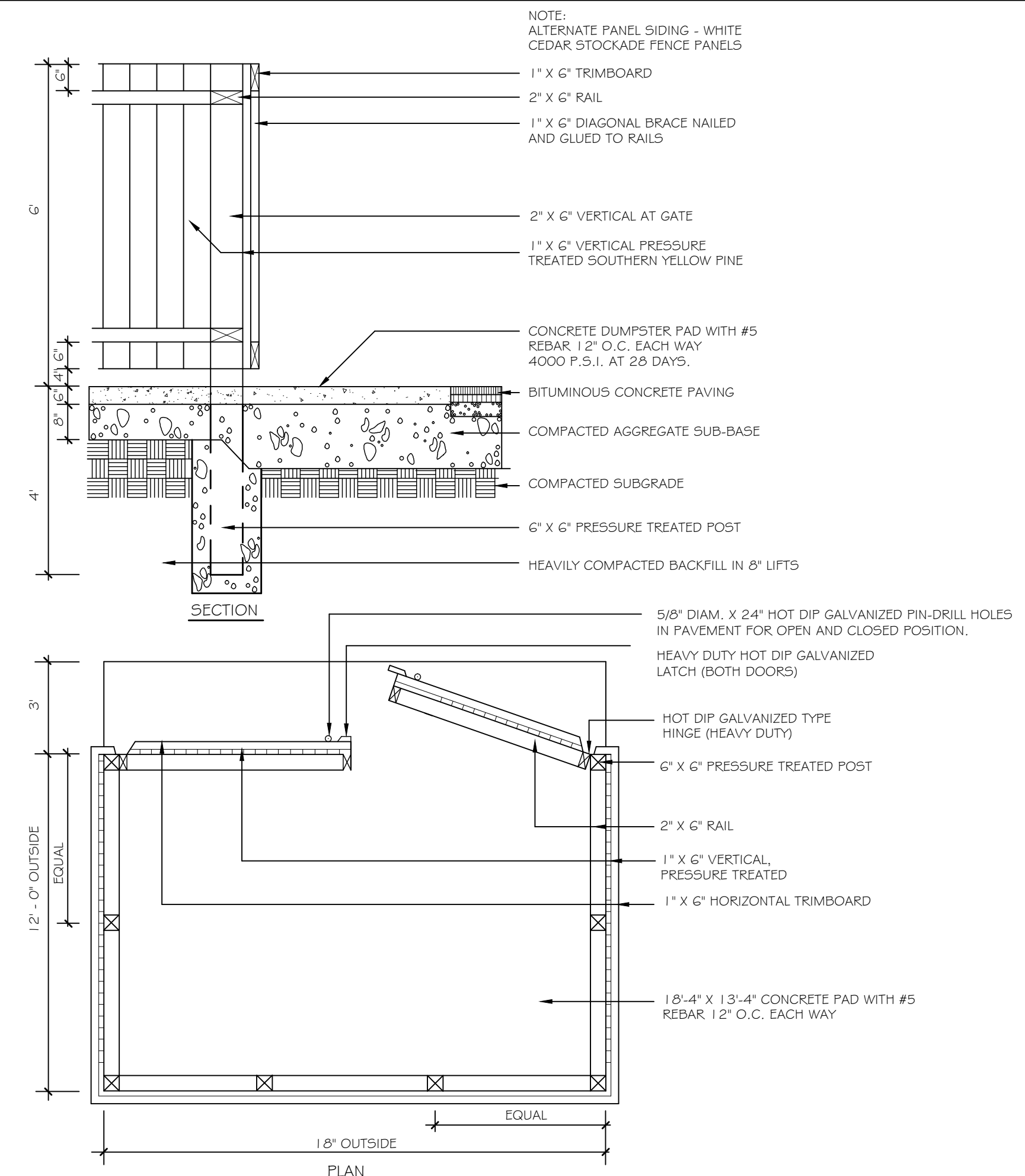
Reproduction or reuse of this document without the expressed written consent of Mitchell & Associates is prohibited. © 2015

Title: SITE DETAILS

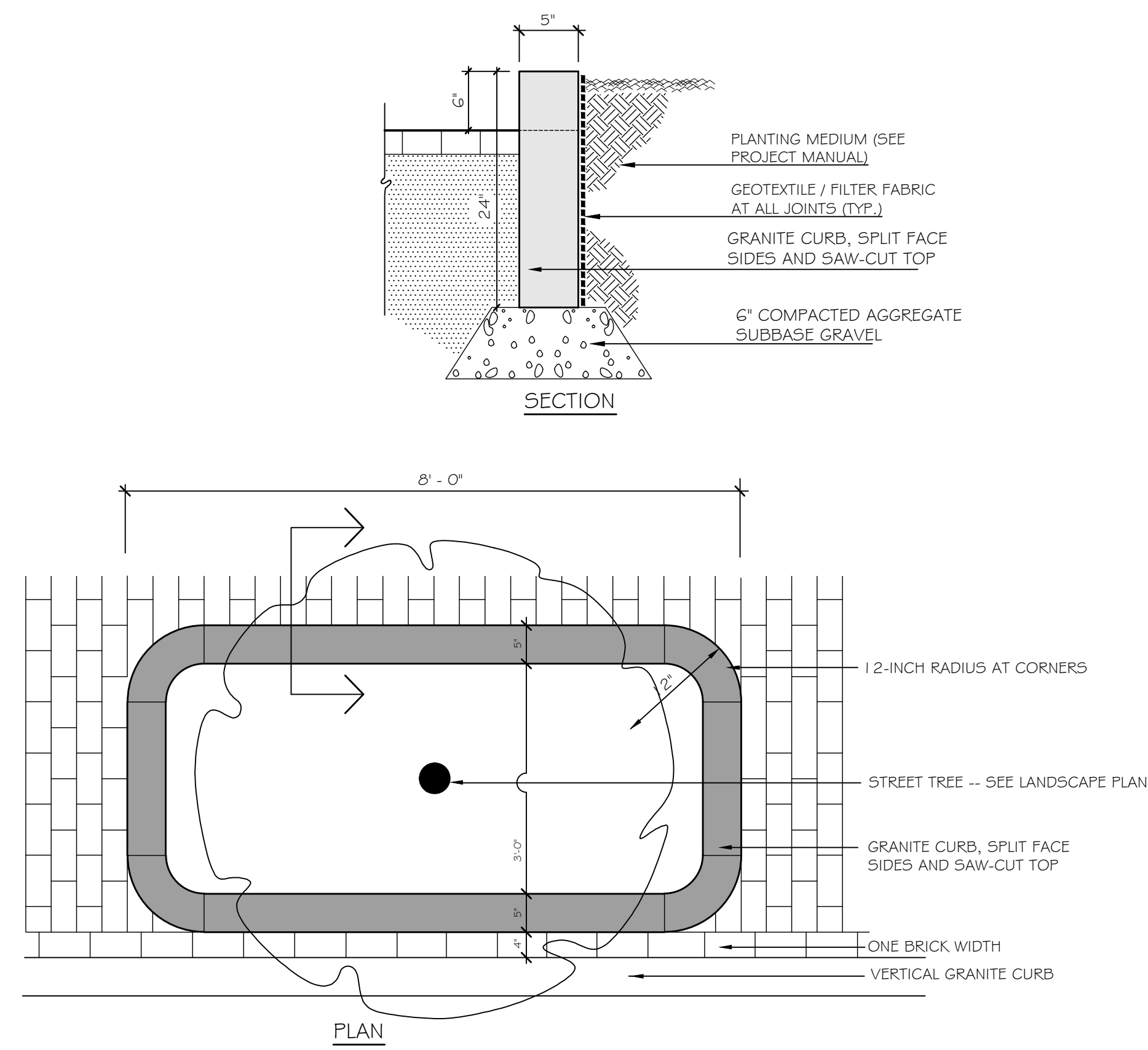
Scale: AS SHOWN

North:

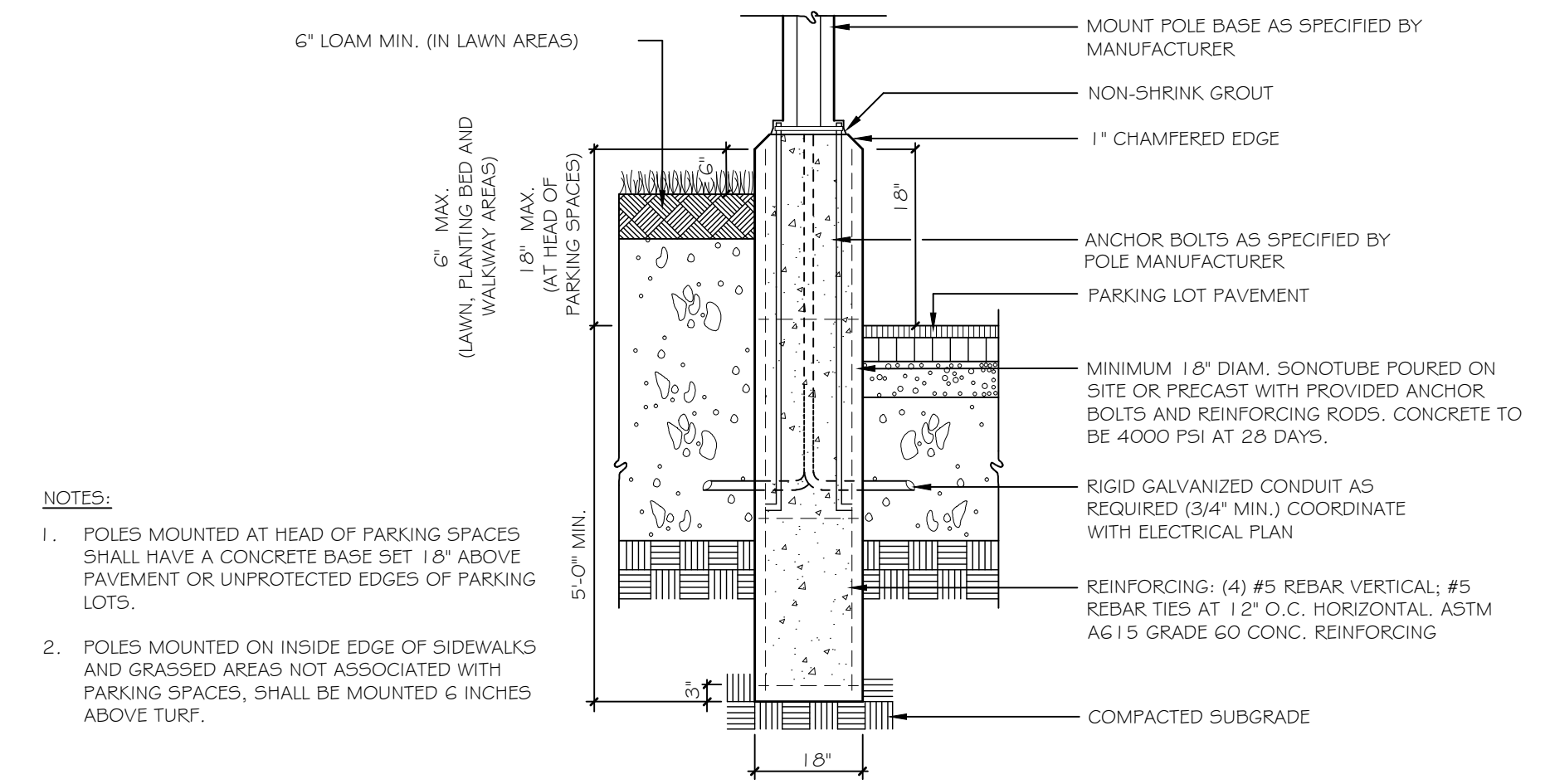
Sheet No.: **L6.1**



1 DUMPSTER ENCLOSURE
 NOT TO SCALE

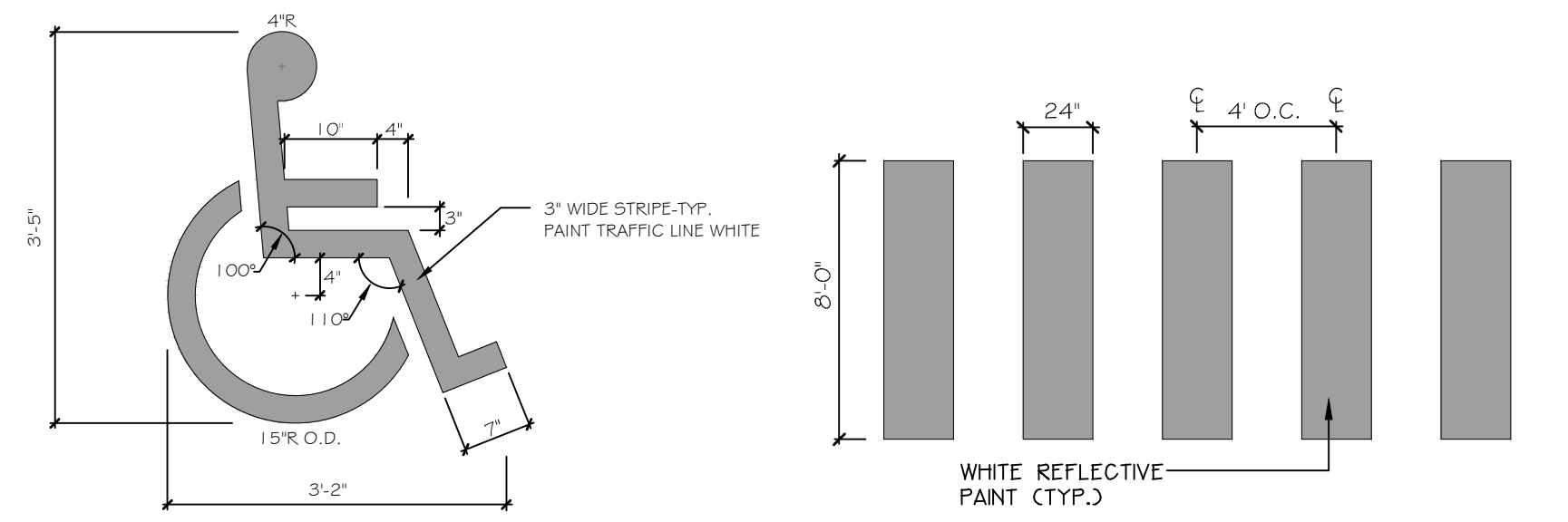


4 STREET TREE RAISED PLANTING BED
 NOT TO SCALE



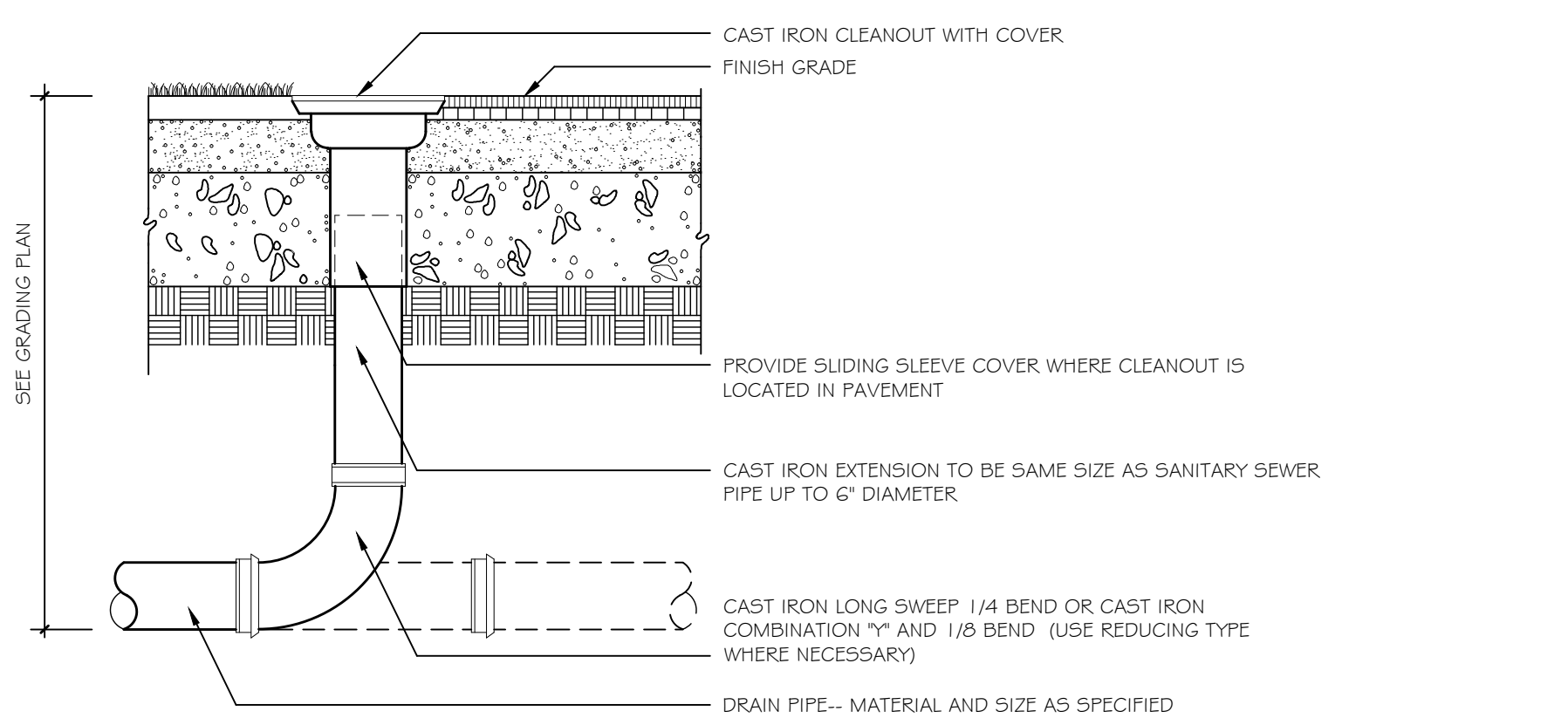
7 CONCRETE LIGHT POLE BASE
 NOT TO SCALE

- NOTES:**
- POLES MOUNTED AT HEAD OF PARKING SPACES SHALL HAVE A CONCRETE BASE SET 1.8' ABOVE PAVEMENT OR UNPROTECTED EDGES OF PARKING LOTS.
 - POLES MOUNTED ON INSIDE EDGE OF SIDEWALKS AND GRASSED AREAS NOT ASSOCIATED WITH PARKING SPACES, SHALL BE MOUNTED 6 INCHES ABOVE TURF.

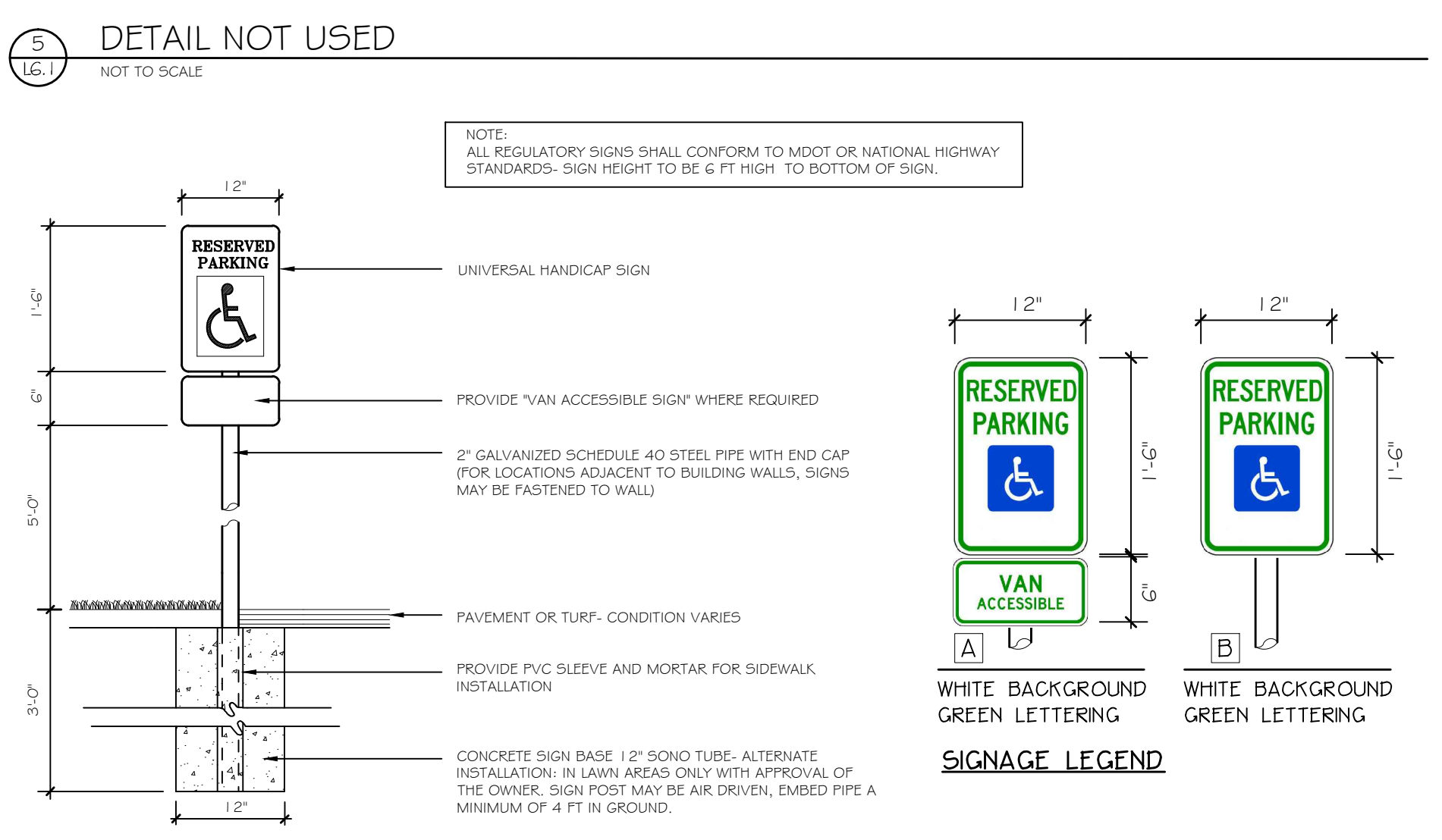


8 ACCESSIBLE SPACE MARKINGS
 NOT TO SCALE

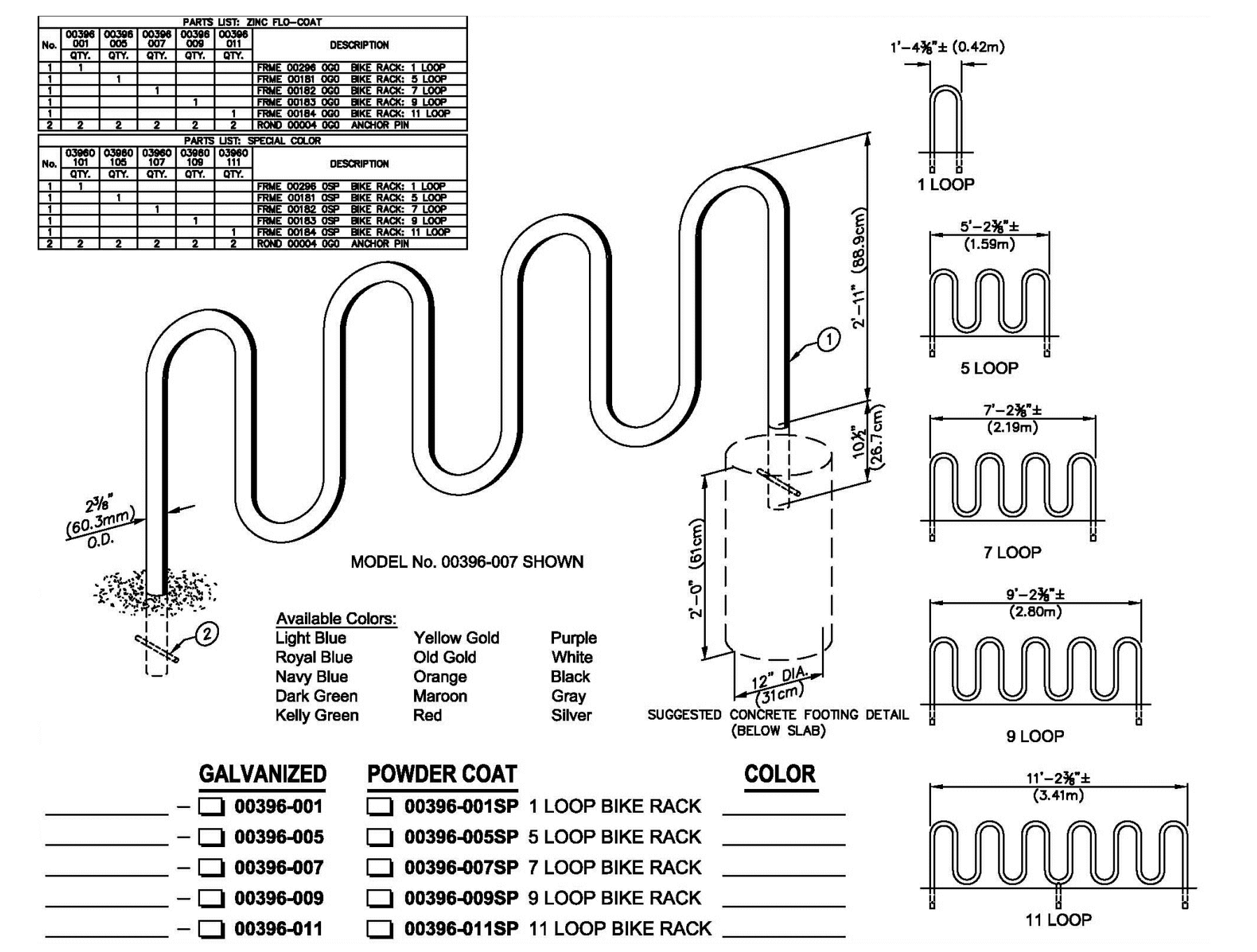
9 PAINTED CROSSWALK
 NOT TO SCALE



2 FOUNDATION DRAIN CLEANOUT DETAIL
 NOT TO SCALE



5 SIGNAGE
 NOT TO SCALE



10 BIKE RACK
 NOT TO SCALE

PERMITTING SET -- NOT FOR CONSTRUCTION

I:\Projects\2015\117 Preble Street\15-05-DETAILS.dwg mjb 10/5/15 1:51 PM