

CONSTRUCTION MANAGEMENT PLAN NOTES

1. THE SITE CAN ACCOMMODATE A TOTAL OF 30 (THIRTY) CONTRACTOR AND SUB-CONTRACTOR VEHICLES. THE OWNER AND CONTRACTOR WILL NOT PROVIDE PARKING BEYOND THESE 30 PARKING SPACES. IF PARKING DEMAND EXCEEDS THESE 30 SPACES, IT WILL BE THE RESPONSIBILITY OF THE SUBCONTRACTOR TO UTILIZE LEGAL CITY OF PORTLAND PARKING SPACES IN THE VICINITY OF THE PROJECT.
2. THE CONTRACTOR ANTICIPATES MAINTAINING THE ACCESSIBILITY OF THE ELM STREET AND PREBLE STREET SIDE WALKS UNTIL SIDEWALK RE-CONSTRUCTION OF THESE SIDEWALKS OCCURS.
3. HOURS OF CONSTRUCTION: 6:30 AM -- 5:00 PM, MONDAY THROUGH FRIDAY.
4. SITE WILL HAVE SECURITY LIGHTING AT NIGHT.

Prepared For:
 Owner and Applicant:
SCHLOTTERBECK BLOCK L.L.C.
 77 Spruce Street
 Portland, Maine 04101
 Tel.: 207-650-8979

Prepared By:
MITCHELL & ASSOCIATES
 Landscape Architects
 70 Center Street
 Portland, Maine 04101
 Tel.: 207-774-4427

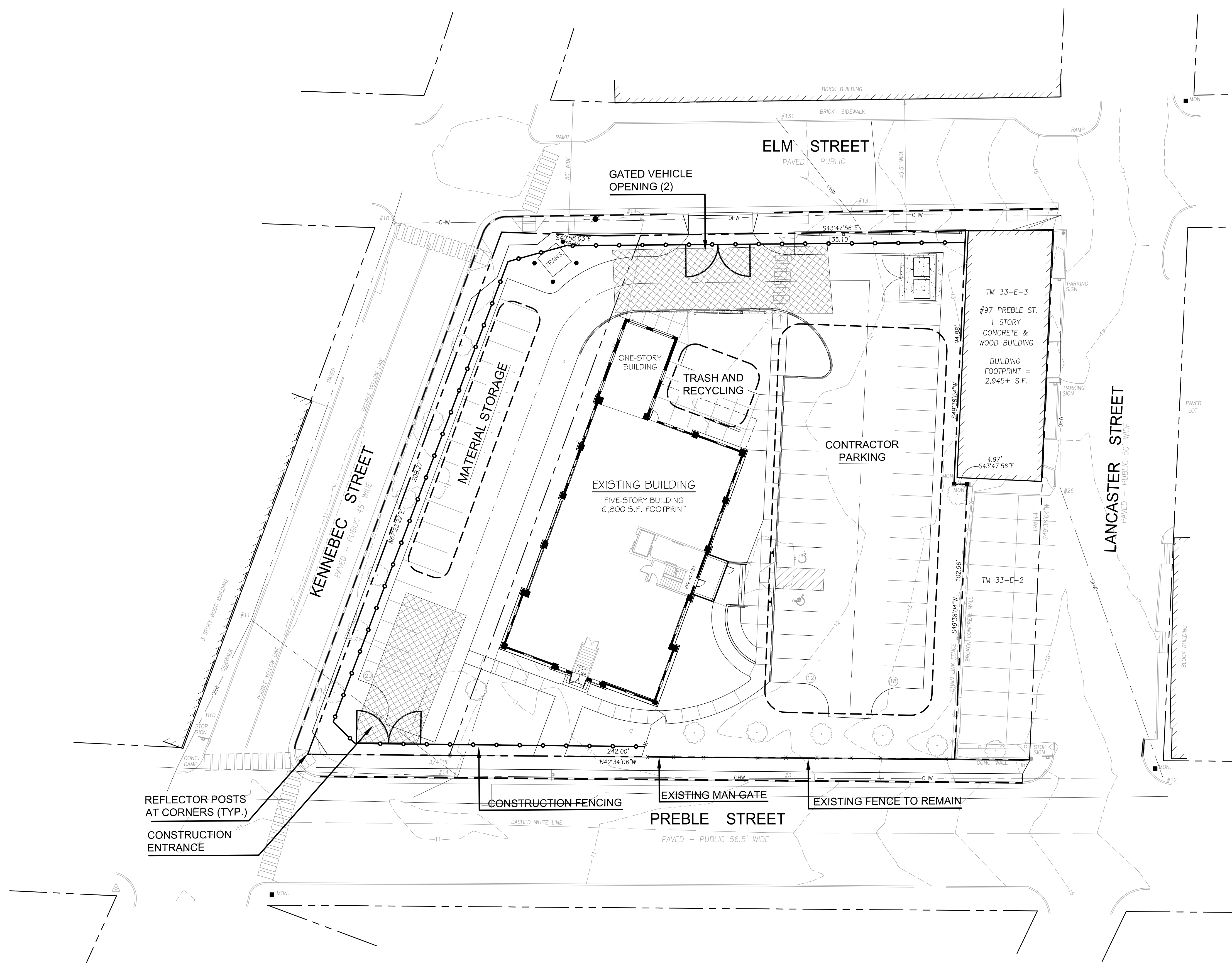
RANSOM CONSULTING ENGINEERS
 400 Commercial Street # 4
 Portland, Maine 04101
 Phone: 207-772-2891

GODUTI-THOMAS ARCHITECTS
 44 Oak Street # 2
 Portland, Maine 04101
 Phone: 207-775-3184

The Schlotterbeck Block

Portland, Maine

117 Preble Street



LEGEND

	EXISTING	PROPOSED
PROPERTY LINE		
IRON PIPE OR ROD FOUND		
MONUMENT FOUND		
UTILITY POLE		
MANHOLE		
ELECTRIC/GAS METER		
SIGN		
CATCH BASIN		
HYDRANT		
WATER VALVE		
LIGHT POLE		
FENCE		
GRANITE CURB		
SLIPFORM CONCRETE CURB		
OVERHEAD WIRES		
WATER LINE		
GAS LINE		
TELEPHONE		
STORM DRAIN		
SANITARY SEWER		
1" CONTOUR		

Date: OCTOBER 5, 2015

Issued For:

Revisions:

Reproduction or reuse of this document without the expressed written consent of Mitchell & Associates is prohibited. © 2015

Title: CONSTRUCTION MANAGEMENT PLAN

Scale: 1" = 20'

North:

Sheet No.: **L1.1**

