

Prepared For:
 Owner and Applicant:
SCHLOTTERBECK BLOCK L.L.C.
 77 Spruce Street
 Portland, Maine 04101
 Tel.: 207-650-8979

Prepared By:
MITCHELL & ASSOCIATES
 Landscape Architects
 70 Center Street
 Portland, Maine 04101
 Tel.: 207-774-4427

RANSOM CONSULTING ENGINEERS
 400 Commercial Street # 4
 Portland, Maine 04101
 Phone: 207-772-2891

GODUTI-THOMAS ARCHITECTS
 44 Oak Street # 2
 Portland, Maine 04101
 Phone: 207-775-3184

The Schlotterbeck Block

Portland, Maine

117 Preble Street

GENERAL NOTES

1. SITE AREA: 40,806 S.F. OR 0.93 ACRE
2. APPLICANT: SCHLOTTERBECK BLOCK, LLC
77 SPRUCE STREET
PORTLAND, MAINE 04101
3. RECORD OWNER: J.B. BROWN & SONS
482 CONGRESS STREET
P.O. BOX 207
PORTLAND, MAINE 04112
4. LOT DATA:
TAX MAP 33, BLOCK E, LOT 1
C.C.R.D BOOK 26354, PAGE 312
AREA: 30,492 S.F.

TAX MAP 33, BLOCK E, LOT 5
C.C.R.D BOOK 26354, PAGE 314
AREA: 10,314 S.F.

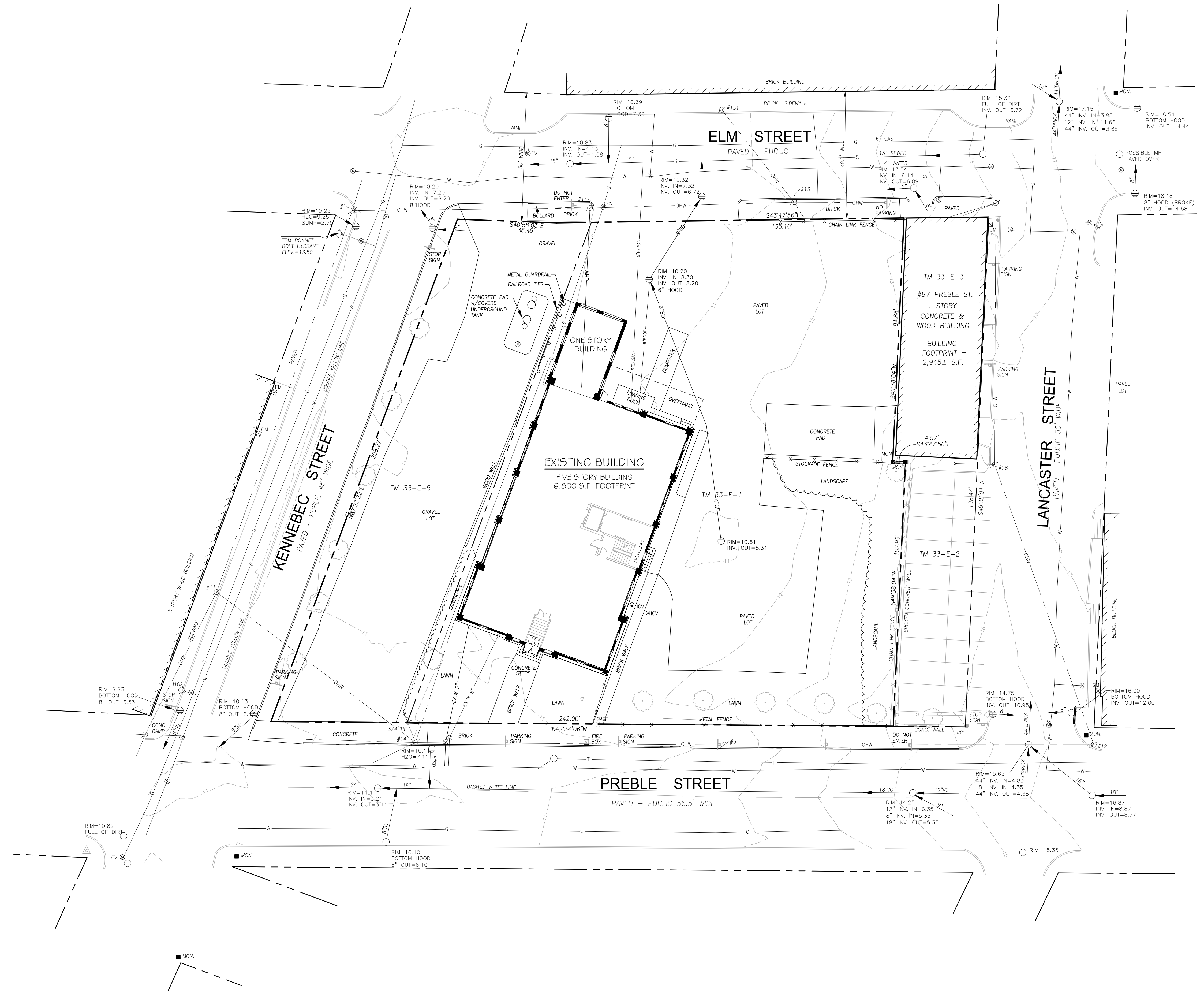
5. BEARINGS ARE BASED ON MAINE STATE PLAN COORDINATE SYSTEM MAINE WEST NAD 83, BASED ON CITY POINT 55 N:301742.42 E: 2927203.68 AND POINT 59 N:301442.06 E:2927035.61 FROM PLAN REFERENCE 1.
6. ELEVATIONS BASED ON NGVD 1929, CITY BENCHMARK TBM 307 PLAN REFERENCE 1. MDOT DISK 1612-(1)-10 1983" IN CONCRETE BASE OF LIGHT POLE AT NORTHEAST CORNER ELMSOMERSET ELEV. = 9.02.

PLAN REFERENCES

1. ELM STREET, STREET LINE RETRACEMENT PLAN, SOMERSET STREET TO LANCASTER STREET, CITY OF PORTLAND, MAINE PUBLIC SERVICES DEPARTMENT ENGINEERING DIVISION DATED OCT. 16, 2012.
2. BAYSIDE TRAIL SOMERSET STREET EXTENTION, ELM STREET TO KENNEBEC STREET, CITY OF PORTLAND, MAINE PUBLIC SERVICES DEPARTMENT ENGINEERING DIVISION DATED JULY 3, 2012.
3. ALTA/ACSM LAND TITLE SURVEY ON PREBLE STREET, LANCASTER STREET EAST, ELM STREET & OXFORD STREET, PORTLAND, MAINE MADE FOR BAYSIDE I, LLC JAN. 26, 2000 BY OWEN HASKELL, INC. RECORDED IN PLAN BOOK 200 PAGE 40.

UTILITIES NOTE

THE UNDERGROUND UTILITIES SHOWN HAVE BEEN LOCATED FROM FIELD SURVEY INFORMATION AND EXISTING DRAWINGS. THE SURVEYOR MAKES NO GUARANTEES THAT THE UNDERGROUND UTILITIES SHOWN COMPRISE ALL SUCH UTILITIES IN THE AREA, EITHER IN SERVICE OR ABANDONED. THE SURVEYOR FURTHER DOES NOT WARRANT THAT THE UNDERGROUND UTILITIES SHOWN ARE IN THE EXACT LOCATION INDICATED ALTHOUGH HE DOES CERTIFY THAT THEY ARE LOCATED AS ACCURATELY AS POSSIBLE FROM INFORMATION AVAILABLE. THE SURVEYOR HAS NOT PHYSICALLY LOCATED THE UNDERGROUND UTILITIES. CALL 1-888-DIGSAFE AT LEAST THREE BUSINESS DAYS BEFORE PERFORMING ANY CONSTRUCTION. DUE TO OSHA CONFINED SPACE REQUIREMENTS, ALL INVERTS AND PIPE SIZES MUST BE VERIFIED PRIOR TO ANY CONSTRUCTION.



LEGEND

PROPERTY LINE	
IRON PIPE OR ROD FOUND	
MONUMENT FOUND	
UTILITY POLE	
MANHOLE	
ELECTRIC/GAS METER	
SIGN	
CATCH BASIN	
HYDRANT	
WATER VALVE	
LIGHT POLE	
FENCE	
GRANITE CURB	
OVERHEAD WIRES	
WATER LINE	
GAS LINE	
TELEPHONE	
STORM DRAIN	
SANITARY SEWER	
1' CONTOUR	

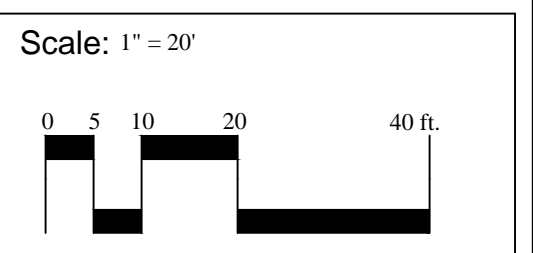
Date: OCTOBER 5, 2015

Issued For:

Revisions:

Reproduction or reuse of this document without the expressed written consent of Mitchell & Associates is prohibited. © 2015

Title: EXISTING CONDITION PLAN



North:

Sheet No.: **L1.0**