

NOTES:

- SEE E.O.0 FOR LEGEND, ABBREVIATIONS AND GENERAL NOTES.
- SEE OVERALL FLOOR PLANS FOR AIR HANDLER UNIT NUMBERS.

KEYED NOTES:

- MOUNT 42" AFF.
- MOUNT RECEPTACLE 6" ABOVE COUNTERTOP. COORDINATE WITH BACKSPLASH.
- REFRIGERATOR WIRE GFI PROJECTION FROM ADJACENT COUNTERTOP RECEPTACLE.
- RANGE WIRING TO BE 3#8AWG & #10GND. COORDINATE NEMA RATING OF RECEPTACLE WITH EQUIPMENT PLUG.
- STACKED WASHER/DRYER. WIRING TO BE 3#10 & #10GND. COORDINATE NEMA RATING OF RECEPTACLE WITH EQUIPMENT PLUG.
- RANGE HOOD WITH LIGHT AND FAN. COORDINATE MOUNTING HEIGHT WITH ARCHITECTURAL ELEVATIONS.
- ELECTRIC WATER HEATER MOUNTED ABOVE BATHROOM WIRING TO BE 2#10 & #10GND.
- DISHWASHER MOUNT UNDER COUNTER. COORDINATE WITH CASEWORK.
- FURNISH BOXES AND CONDUITS TO UNIT CLOSET FOR CARD READER AND ELECTRIC STRIKE LOCATION. (ADD ALTERNATE 1)
- INSTALL PANELBOARD TO RETAIN FIRE RATING OF WALL.

project name

Schlotterbeck Block

117 Preble Street
Portland, Maine

Schlotterbeck Block LLC

goduti/thomas architects

44 oak st.

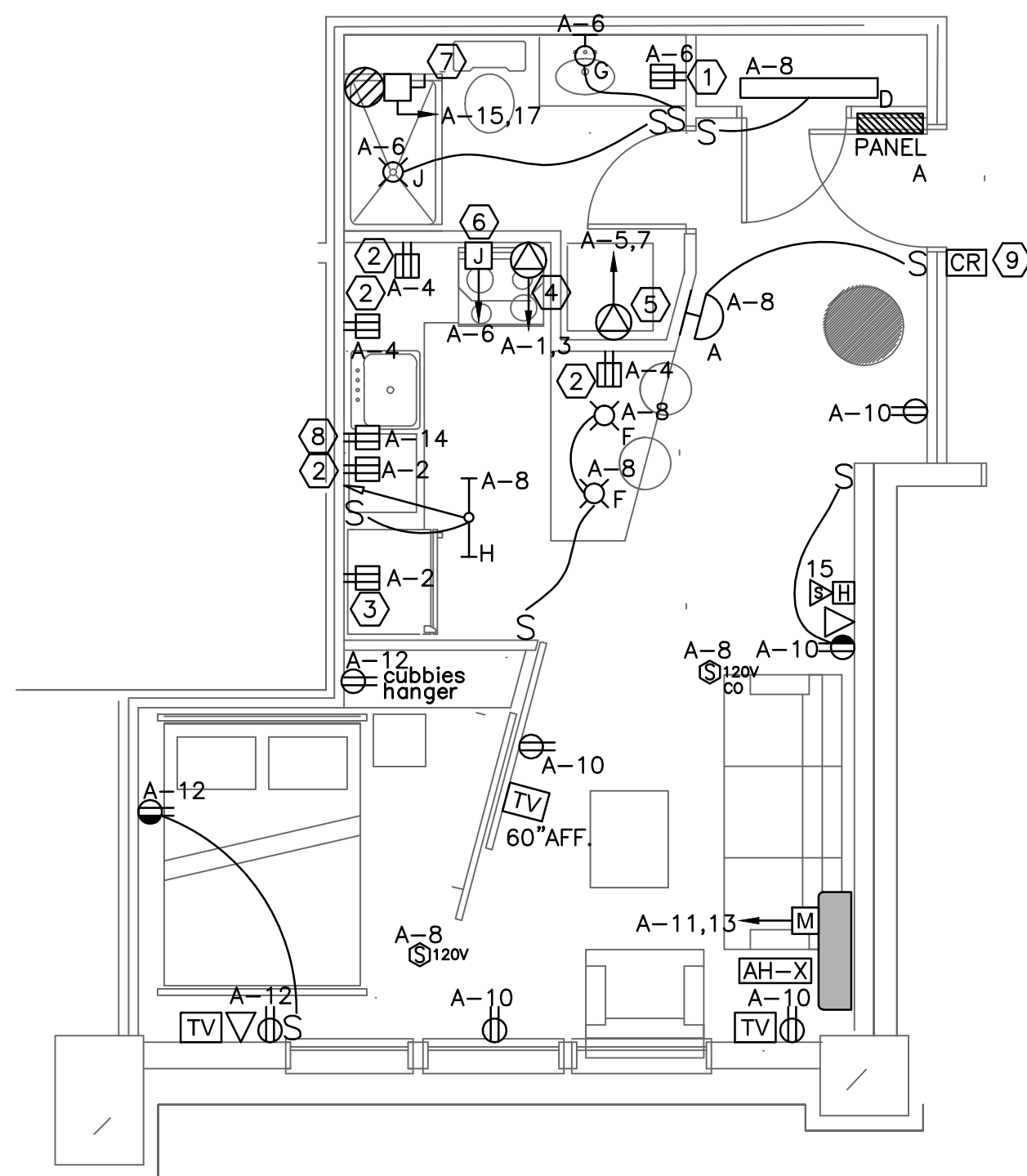
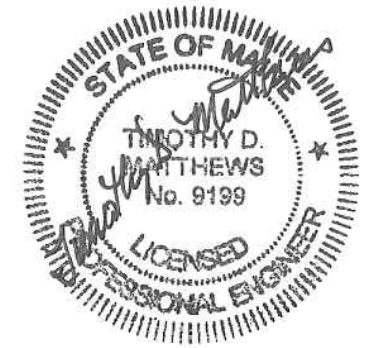
portland, maine 04101

ph. 207-775-3184

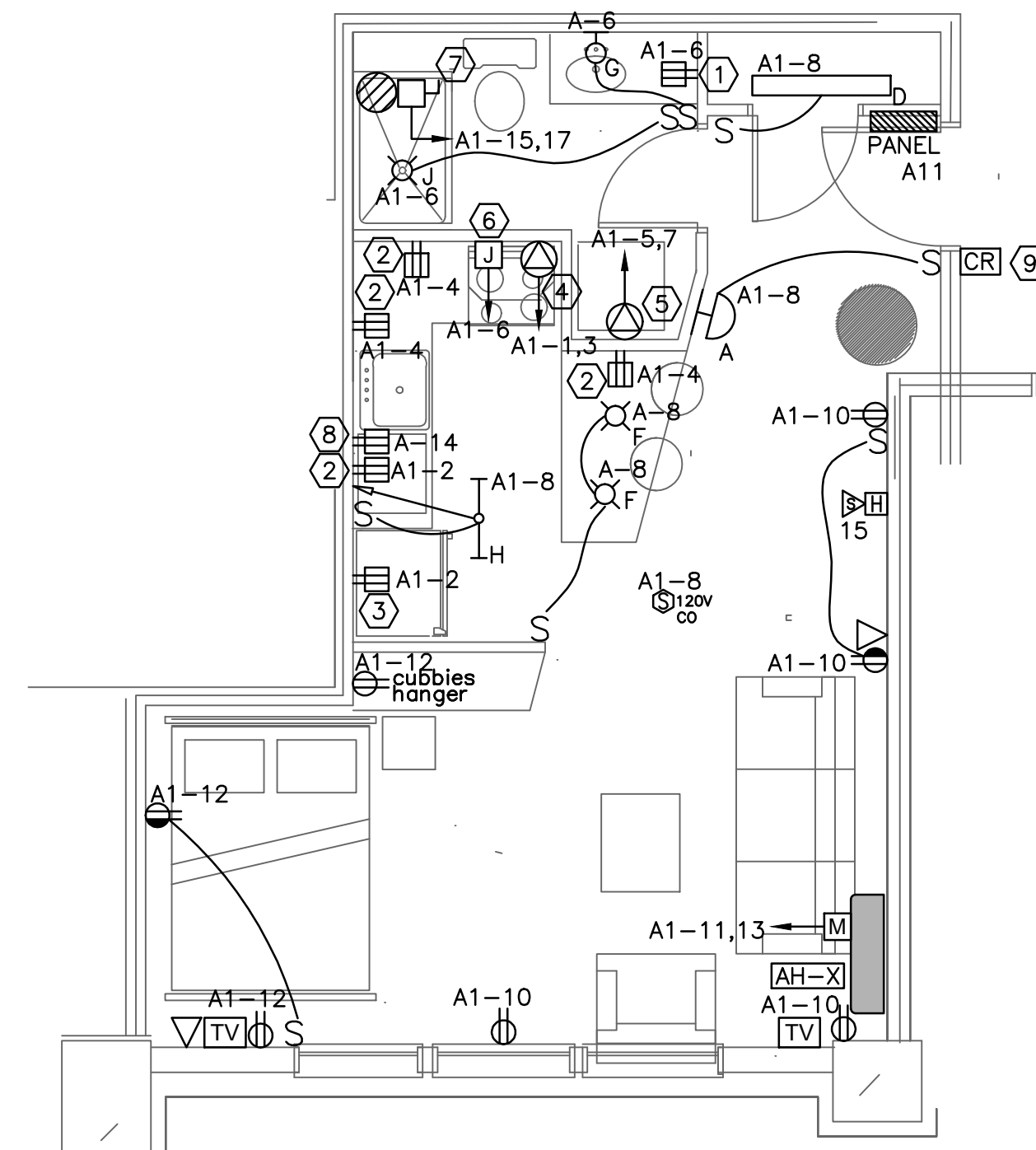
fax 207-774-0846

SWIFTCURRENT

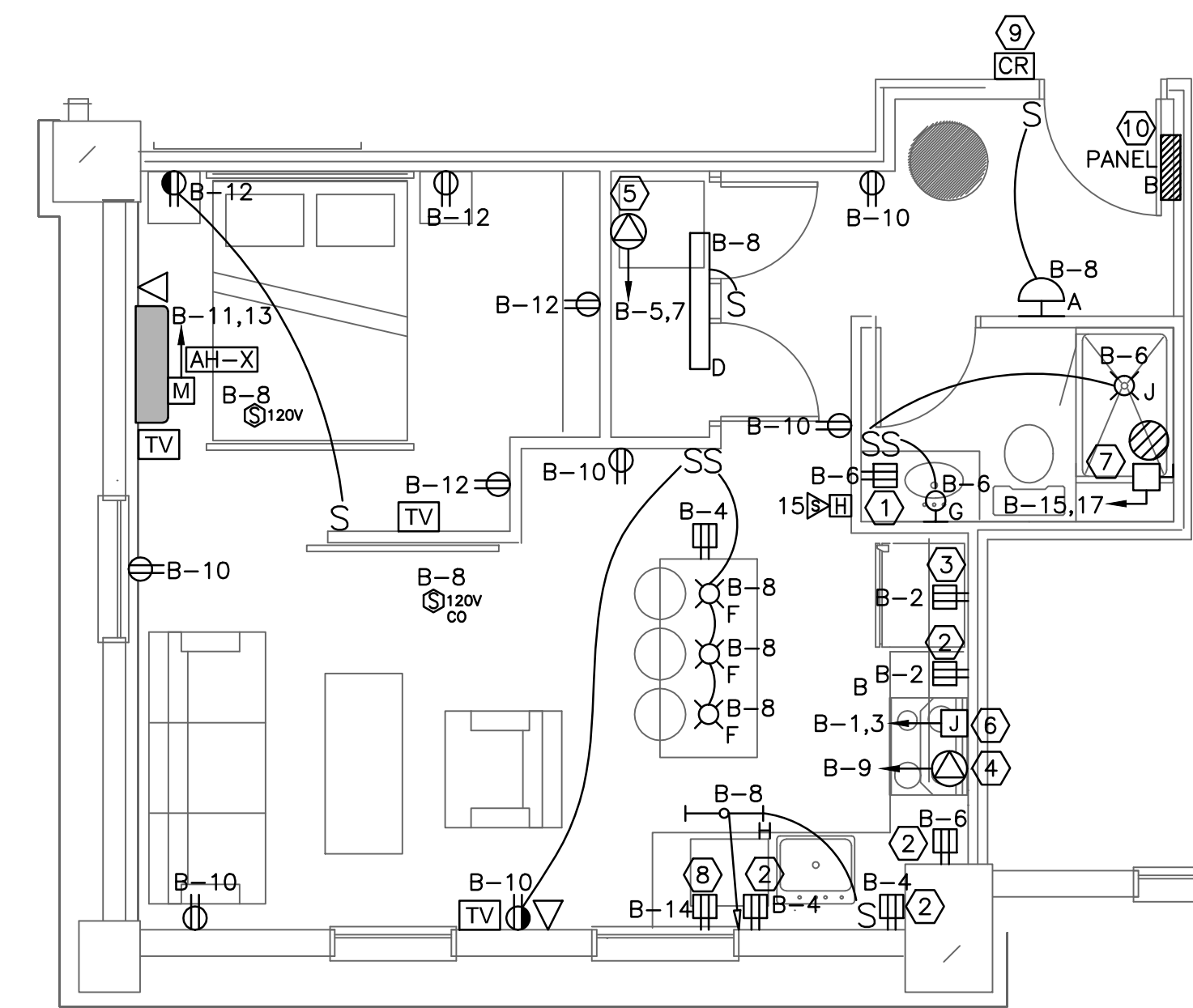
Engineering Services
10 Forest Falls Dr. Unit 4B
Yarmouth, ME 04096
Tel: (207) 847-9280



1 UNIT TYPE A (TYP.)
SCALE: 1/4"=1'



3 UNIT TYPE A1 (TYP.)
SCALE: 1/4"=1'



5 UNIT TYPE B (TYP.)
SCALE: 1/4"=1'

DIRECTORY	KVA LOAD		BRK #	BRK AMPS	PHASE	BRK AMPS	CKT #	KVA LOAD		DIRECTORY	
	A	B						A	B		
RANGE	4.0		1	50	A	20(1)	2	1.5		KITCHEN COUNTERTOP RECEPTACLES	
		4.0	3		B	20(1)	4	1.5		KITCHEN COUNTERTOP RECEPTACLES	
STACKABLE/WASHER/DRYER	2.3		5	30	A	20(1)	6	0.3		BATHROOM RECEPTACLE	
		2.3	7		B	20(1)	8	0.3		LIGHTS	
RANGE HOOD	0.3		9	20(1)	A	20(1)	10	0.9		LIVING RECEPTACLES	
AH-X		0.1	11	15	B	20(1)	12	0.6		BEDROOM RECEPTACLES	
		0.1	13		A	20(1)	14	1.0		DISHWASHER	
ELECTRIC WATER HEATER		2.3	15	30	B	20(1)	16	*		SPARE	
		2.3	17		A	20(1)	18	*		SPARE	
SPARE		*	19	20(1)	B	20(1)	20	*		SPARE	
SUBTOTAL	9.0	8.7						3.7	2.4	SUBTOTAL	
VOLTAGE: 120Y/240V PHASE: 1 POLES: 3				TOTAL KVA A-PHASE		12.7				PANEL P21, P25, P31, P35, P41, P45, P51, P55	
MAIN LUGS ONLY BUS AMPS: 100A				TOTAL KVA B-PHASE		11.1				LOCATION UNITS 201, 205, 301, 305, 401, 405, 501, & 505	
MOUNTING: RECESSED				TOTAL KVA		23.8					
SHORT CIRCUIT RATING: 10KAIC				TOTAL KVA		23.8					
NOTES: (1) ARC FAULT BREAKER											

2 ELECTRICAL PANEL - UNIT TYPE A (TYP.)
SCALE: NOT TO SCALE

DIRECTORY	KVA LOAD		BRK #	BRK AMPS	PHASE	BRK AMPS	CKT #	KVA LOAD		DIRECTORY	
	A	B						A	B		
RANGE	4.0		1	50	A	20(1)	2	1.5		KITCHEN COUNTERTOP RECEPTACLES	
		4.0	3		B	20(1)	4	1.5		KITCHEN COUNTERTOP RECEPTACLES	
STACKABLE/WASHER/DRYER	2.3		5	30	A	20(1)	6	0.3		BATHROOM RECEPTACLE	
		2.3	7		B	20(1)	8	0.3		LIGHTS	
RANGE HOOD	0.3		9	20(1)	A	20(1)	10	0.9		LIVING RECEPTACLES	
AH-X		0.1	11	15	B	20(1)	12	0.6		BEDROOM RECEPTACLES	
		0.1	13		A	20(1)	14	1.0		DISHWASHER	
ELECTRIC WATER HEATER		2.3	15	30	B	20(1)	16	*		SPARE	
		2.3	17		A	20(1)	18	*		SPARE	
SPARE		*	19	20(1)	B	20(1)	20	*		SPARE	
SUBTOTAL	9.0	8.7						3.7	2.4	SUBTOTAL	
VOLTAGE: 120Y/240V PHASE: 1 POLES: 3				TOTAL KVA A-PHASE		12.7				PANEL PL1 & PL4	
MAIN LUGS ONLY BUS AMPS: 100A				TOTAL KVA B-PHASE		11.1				LOCATION UNITS L01 & L04	
MOUNTING: RECESSED				TOTAL KVA		23.8					
SHORT CIRCUIT RATING: 10KAIC				TOTAL KVA		23.8					
NOTES: (1) ARC FAULT BREAKER											

4 ELECTRICAL PANEL - UNIT TYPE A1 (TYP.)
SCALE: NOT TO SCALE

DIRECTORY	KVA LOAD		BRK #	BRK AMPS	PHASE	BRK AMPS	CKT #	KVA LOAD		DIRECTORY	
	A	B						A	B		
RANGE	4.0		1	50	A	20(1)	2	1.5		KITCHEN COUNTERTOP RECEPTACLES	
		4.0	3		B	20(1)	4	1.5		KITCHEN COUNTERTOP RECEPTACLES	
STACKABLE/WASHER/DRYER	2.3		5	30	A	20(1)	6	0.3		BATHROOM RECEPTACLE	
		2.3	7		B	20(1)	8	0.3		LIGHTS	
RANGE HOOD	0.3		9	20(1)	A	20(1)	10	1.3		LIVING RECEPTACLES	
AH-X		0.1	11	15	B	20(1)	12	0.8		BEDROOM RECEPTACLES	
		0.1	13		A	20(1)	14	1.0		DISHWASHER	
ELECTRIC WATER HEATER		2.3	15	30	B	20(1)	16	*		SPARE	
		2.3	17		A	20(1)	18	*		SPARE	
SPARE		*	19	20(1)	B	20(1)	20	*		SPARE	
SUBTOTAL	9.0	8.7						4.1	2.6	SUBTOTAL	
VOLTAGE: 120Y/240V PHASE: 1 POLES: 3				TOTAL KVA A-PHASE		13.1				PANEL P22, P24, P32, P34, P42, P44, P52, & P54	
MAIN LUGS ONLY BUS AMPS: 100A				TOTAL KVA B-PHASE		11.3				LOCATION UNITS 202, 204, 302, 304, 402, 404, 502, & 504	
MOUNTING: RECESSED				TOTAL KVA		24.4					
SHORT CIRCUIT RATING: 10KAIC				TOTAL KVA		24.4					
NOTES: (1) ARC FAULT BREAKER											

6 ELECTRICAL PANEL - UNIT TYPE B (TYP.)
SCALE: NOT TO SCALE

revisions

date

MARCH 16th 2016

sheet title

ELECTRICAL DETAILS & PANEL SCHEDULES

scale

AS NOTED

drawn by

JMD

project number

shlotterbeck

sheet number

E3.0

ISSUED FOR CONSTRUCTION
3-16-2016

NOTES:

- SEE E.O.0 FOR LEGEND, ABBREVIATIONS AND GENERAL NOTES.
- SEE OVERALL FLOOR PLANS FOR AIR HANDLER UNIT NUMBERS.

KEYED NOTES:

- MOUNT 42" AFF.
- MOUNT RECEPTACLE 6" ABOVE COUNTERTOP. COORDINATE WITH BACKSPASH.
- REFRIGERATOR WIRE GFI PROJECTION FROM ADJACENT COUNTERTOP RECEPTACLE.
- RANGE WIRING TO BE 3#8AWG & #10GND. COORDINATE NEMA RATING OF RECEPTACLE WITH EQUIPMENT PLUG.
- STACKED WASHER/DRYER. WIRING TO BE 3#10 & #10GND. COORDINATE NEMA RATING OF RECEPTACLE WITH EQUIPMENT PLUG.
- RANGE HOOD WITH LIGHT AND FAN. COORDINATE MOUNTING HEIGHT WITH ARCHITECTURAL ELEVATIONS.
- ELECTRIC WATER HEATER MOUNTED ABOVE BATHROOM WIRING TO BE 2#10 & #10GND.
- DISHWASHER MOUNT UNDER COUNTER. COORDINATE WITH CASEWORK.
- FURNISH BOXES AND CONDUITS TO UNIT CLOSET FOR CARD READER AND ELECTRIC STRIKE LOCATION.
- INSTALL PANELBOARD TO RETAIN FIRE RATING OF WALL.

project name

Schlotterbeck Block

117 Preble Street
Portland, Maine

Schlotterbeck Block LLC

goduti/thomas architects

44 oak st.

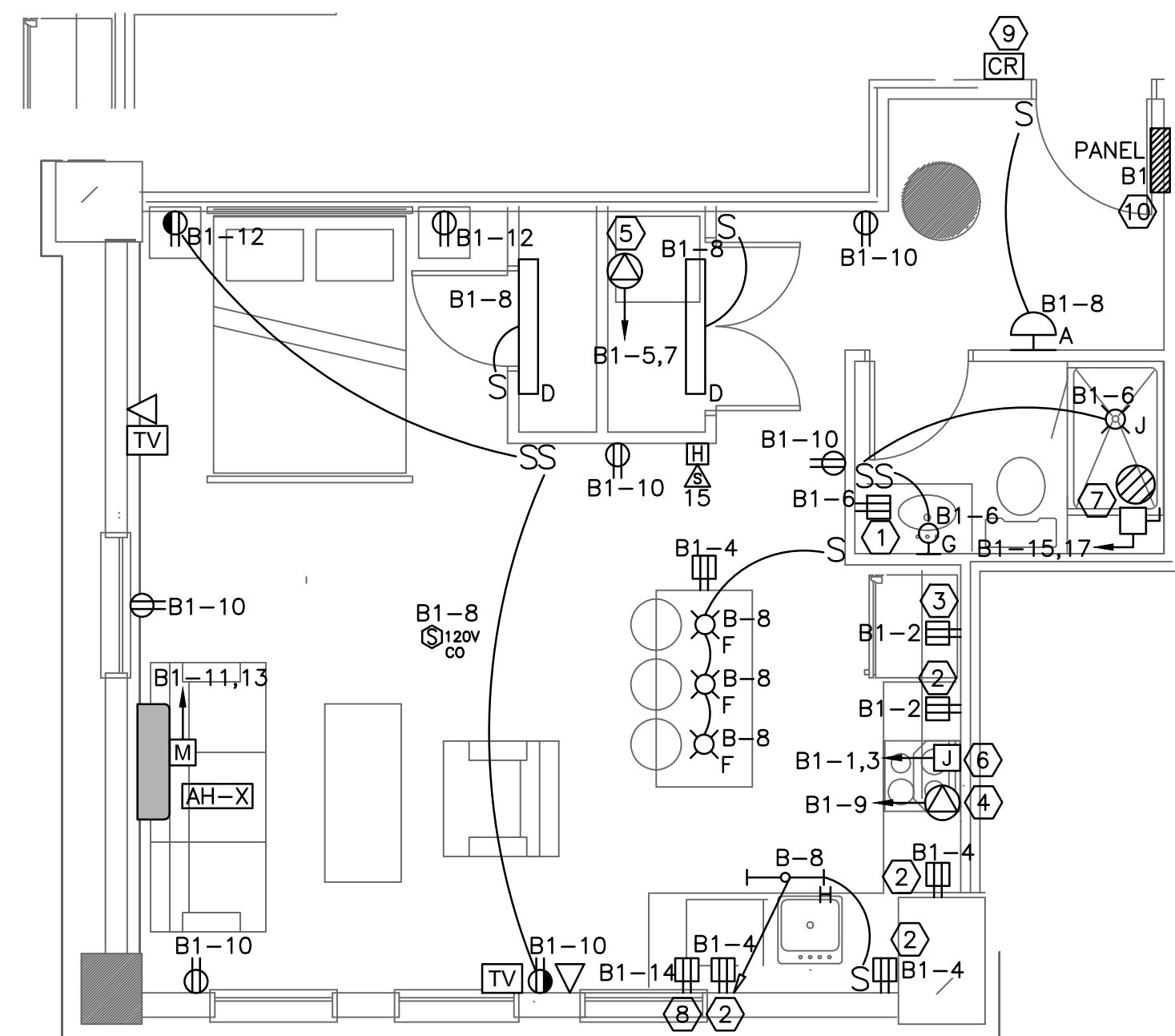
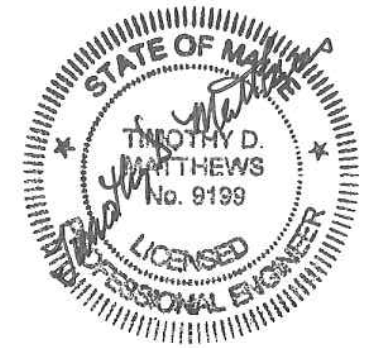
portland, maine 04101

ph. 207-775-3184

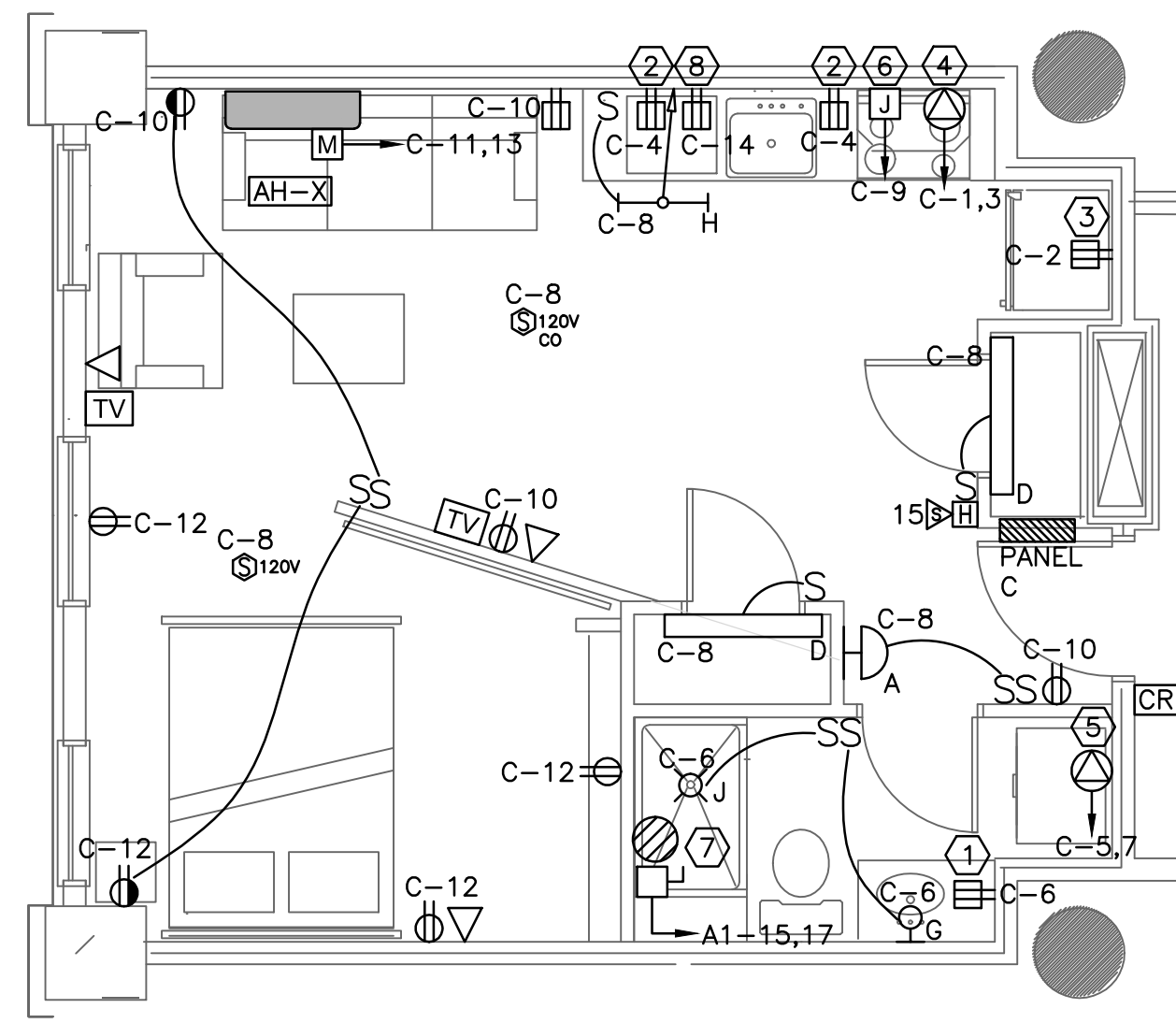
fax 207-774-0846

SWIFTCURRENT

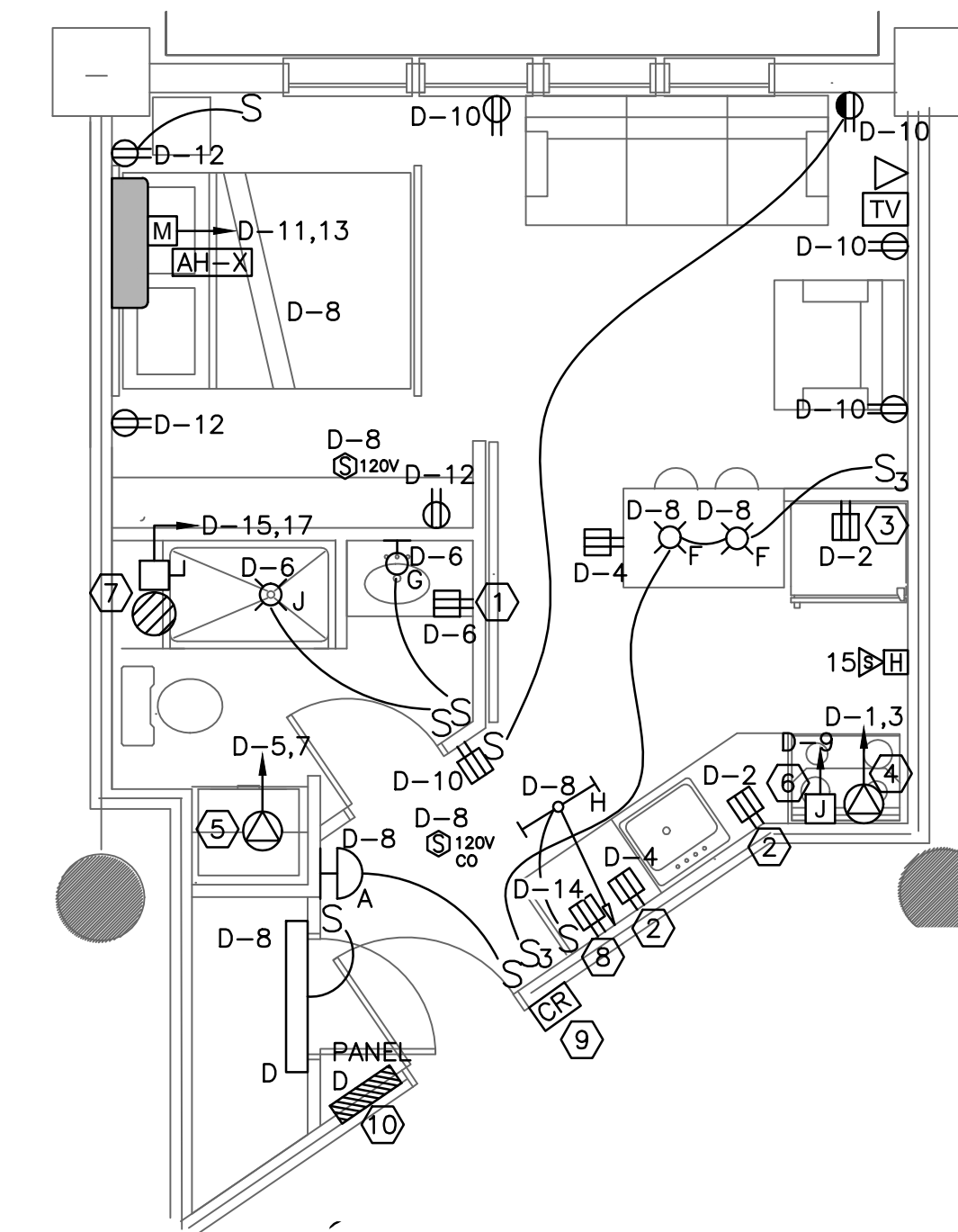
Engineering Services
10 Forest Falls Dr. Unit 4B
Yarmouth, ME 04096
Tel: (207) 847-9280



1 UNIT TYPE B1 (TYP.)
SCALE: 1/4"=1'



3 UNIT TYPE C (TYP.)
SCALE: 1/4"=1'



5 UNIT TYPE D (TYP.)
SCALE: 1/4"=1'

DIRECTORY	KVA LOAD		BRK #	BRK AMPS	PHASE	BRK AMPS	CKT #	KVA LOAD		DIRECTORY	
	A	B						A	B		
RANGE	4.0		1	50	A	20(1)	2	1.5		KITCHEN COUNTERTOP RECEPTACLES	
		4.0	3		B	20(1)	4	1.5		KITCHEN COUNTERTOP RECEPTACLES	
STACKABLE/WASHER/DRYER	2.3		5	30	A	20(1)	6	0.3		BATHROOM RECEPTACLE	
		2.3	7		B	20(1)	8	0.3		LIGHTS	
RANGE HOOD	0.3		9	20(1)	A	20(1)	10	1.1		LIVING RECEPTACLES	
AH-X		0.1	11	15	B	20(1)	12	0.6		BEDROOM RECEPTACLES	
		0.1	13		A	20(1)	14	1.0		DISHWASHER	
ELECTRIC WATER HEATER		2.3	15	30	B	20(1)	16	*		SPARE	
		2.3	17		A	20(1)	18	*		SPARE	
SPARE		*	19	20(1)	B	20(1)	20	*		SPARE	
SUBTOTAL	9.0	8.7						3.9	2.4	SUBTOTAL	
VOLTAGE: 120Y/240V PHASE: 1 POLES: 3				TOTAL KVA A-PHASE				12.9		PANEL	
MAIN LUGS ONLY BUS AMPS: 100A				TOTAL KVA B-PHASE				11.1		PL2	
MOUNTING: RECESSED				TOTAL KVA				24.0		LOCATION UNITS L02	
SHORT CIRCUIT RATING: 10KAIC				TOTAL KVA				24.0		UNITS 102, 206, 306, 406, 506	
NOTES: (1) ARC FAULT BREAKER											

2 ELECTRICAL PANEL - UNIT TYPE B1 (TYP.)
SCALE: NOT TO SCALE

DIRECTORY	KVA LOAD		BRK #	BRK AMPS	PHASE	BRK AMPS	CKT #	KVA LOAD		DIRECTORY	
	A	B						A	B		
RANGE	4.0		1	50	A	20(1)	2	1.5		KITCHEN COUNTERTOP RECEPTACLES	
		4.0	3		B	20(1)	4	1.5		KITCHEN COUNTERTOP RECEPTACLES	
STACKABLE/WASHER/DRYER	2.3		5	30	A	20(1)	6	0.3		BATHROOM RECEPTACLE	
		2.3	7		B	20(1)	8	0.3		LIGHTS	
RANGE HOOD	0.3		9	20(1)	A	20(1)	10	0.9		LIVING RECEPTACLES	
AH-X		0.1	11	15	B	20(1)	12	0.8		BEDROOM RECEPTACLES	
		0.1	13		A	20(1)	14	1.0		DISHWASHER	
ELECTRIC WATER HEATER		2.3	15	30	B	20(1)	16	*		SPARE	
		2.3	17		A	20(1)	18	*		SPARE	
SPARE		*	19	20(1)	B	20(1)	20	*		SPARE	
SUBTOTAL	9.0	8.7						3.7	2.6	SUBTOTAL	
VOLTAGE: 120Y/240V PHASE: 1 POLES: 3				TOTAL KVA A-PHASE				12.7		PANEL P23, P33, P43, & P53	
MAIN LUGS ONLY BUS AMPS: 100A				TOTAL KVA B-PHASE				11.3		UNITS 203, 303, 403, & 503	
MOUNTING: RECESSED				TOTAL KVA				24.0		LOCATION	
SHORT CIRCUIT RATING: 10KAIC				TOTAL KVA				24.0		UNITS 203, 303, 403, & 503	
NOTES: (1) ARC FAULT BREAKER											

4 ELECTRICAL PANEL - UNIT TYPE C (TYP.)
SCALE: NOT TO SCALE

DIRECTORY	KVA LOAD		BRK #	BRK AMPS	PHASE	BRK AMPS	CKT #	KVA LOAD		DIRECTORY	
	A	B						A	B		
RANGE	4.0		1	50	A	20(1)	2	1.5		KITCHEN COUNTERTOP RECEPTACLES	
		4.0	3		B	20(1)	4	1.5		KITCHEN COUNTERTOP RECEPTACLES	
STACKABLE/WASHER/DRYER	2.3		5	30	A	20(1)	6	0.3		BATHROOM RECEPTACLE	
		2.3	7		B	20(1)	8	0.3		LIGHTS	
RANGE HOOD	0.3		9	20(1)	A	20(1)	10	1.3		LIVING RECEPTACLES	
AH-X		0.1	11	15	B	20(1)	12	0.8		BEDROOM RECEPTACLES	
		0.1	13		A	20(1)	14	1.0		DISHWASHER	
ELECTRIC WATER HEATER		2.3	15	30	B	20(1)	16	*		SPARE	
		2.3	17		A	20(1)	18	*		SPARE	
SPARE		*	19	20(1)	B	20(1)	20	*		SPARE	
SUBTOTAL	9.0	8.7						4.1	2.6	SUBTOTAL	
VOLTAGE: 120Y/240V PHASE: 1 POLES: 3				TOTAL KVA A-PHASE				13.1		PANEL P12, P26, P36, P46, & P56	
MAIN LUGS ONLY BUS AMPS: 100A				TOTAL KVA B-PHASE				11.3		UNITS 102, 206, 306, 406, 506	
MOUNTING: RECESSED				TOTAL KVA				24.4		LOCATION	
SHORT CIRCUIT RATING: 10KAIC				TOTAL KVA				24.4		UNITS 102, 206, 306, 406, 506	
NOTES: (1) ARC FAULT BREAKER											

6 ELECTRICAL PANEL - UNIT TYPE D (TYP.)
SCALE: NOT TO SCALE

revisions

date

MARCH 16th 2016

sheet title

ELECTRICAL DETAILS & PANEL SCHEDULES

scale

AS NOTED

drawn by

JMD

project number

shlotterbeck

sheet number

ISSUED FOR CONSTRUCTION
3-16-2016

E3.1

project name

Schlotterbeck Block

117 Preble Street
Portland, Maine

Schlotterbeck Block LLC

goduti/thomas architects

44 oak st.

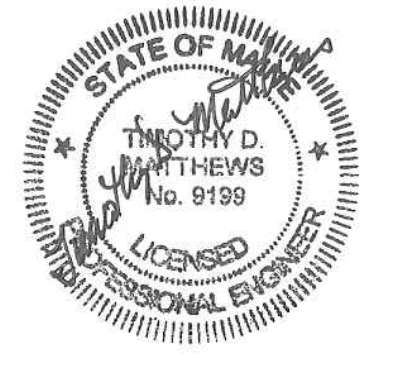
portland, maine 04101

ph. 207-775-3184

fax 207-774-0846

SWIFTCURRENT

Engineering Services
10 Forest Falls Dr. Unit 4B
Yarmouth, ME 04096
Tel: (207) 847-9280

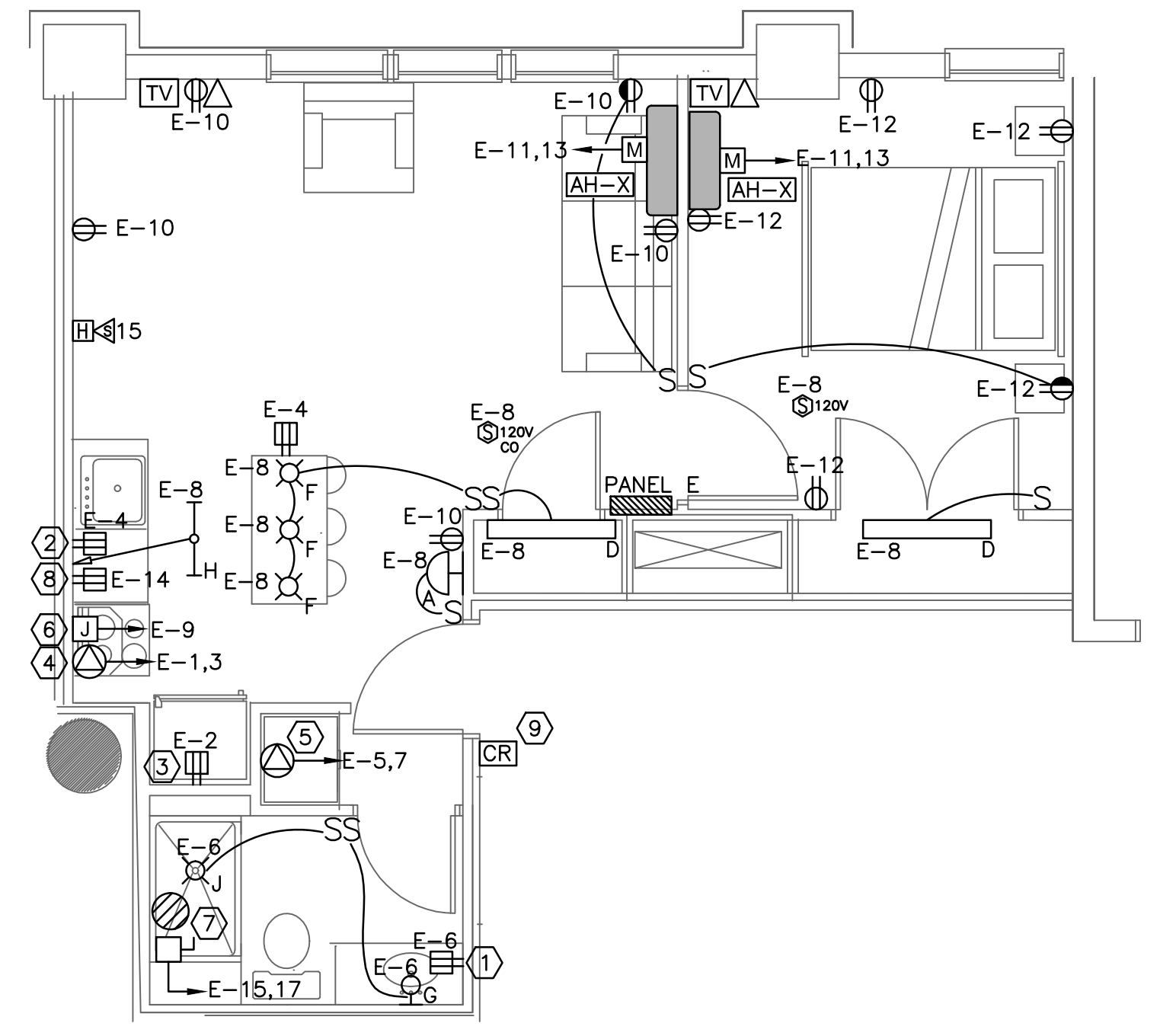


NOTES:

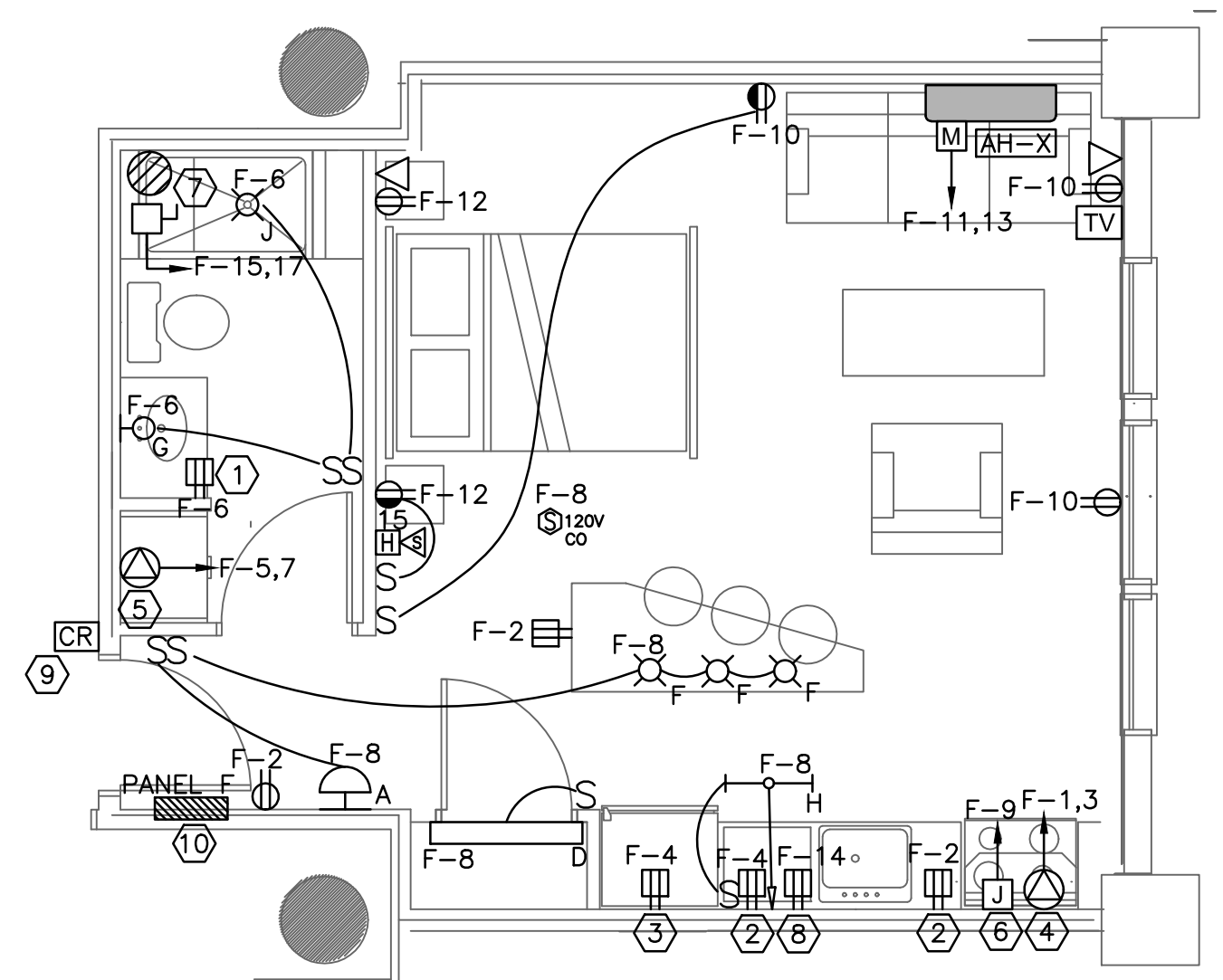
- SEE E.O. FOR LEGEND, ABBREVIATIONS AND GENERAL NOTES.
- SEE OVERALL FLOOR PLANS FOR AIR HANDLER UNIT NUMBERS.

KEYED NOTES:

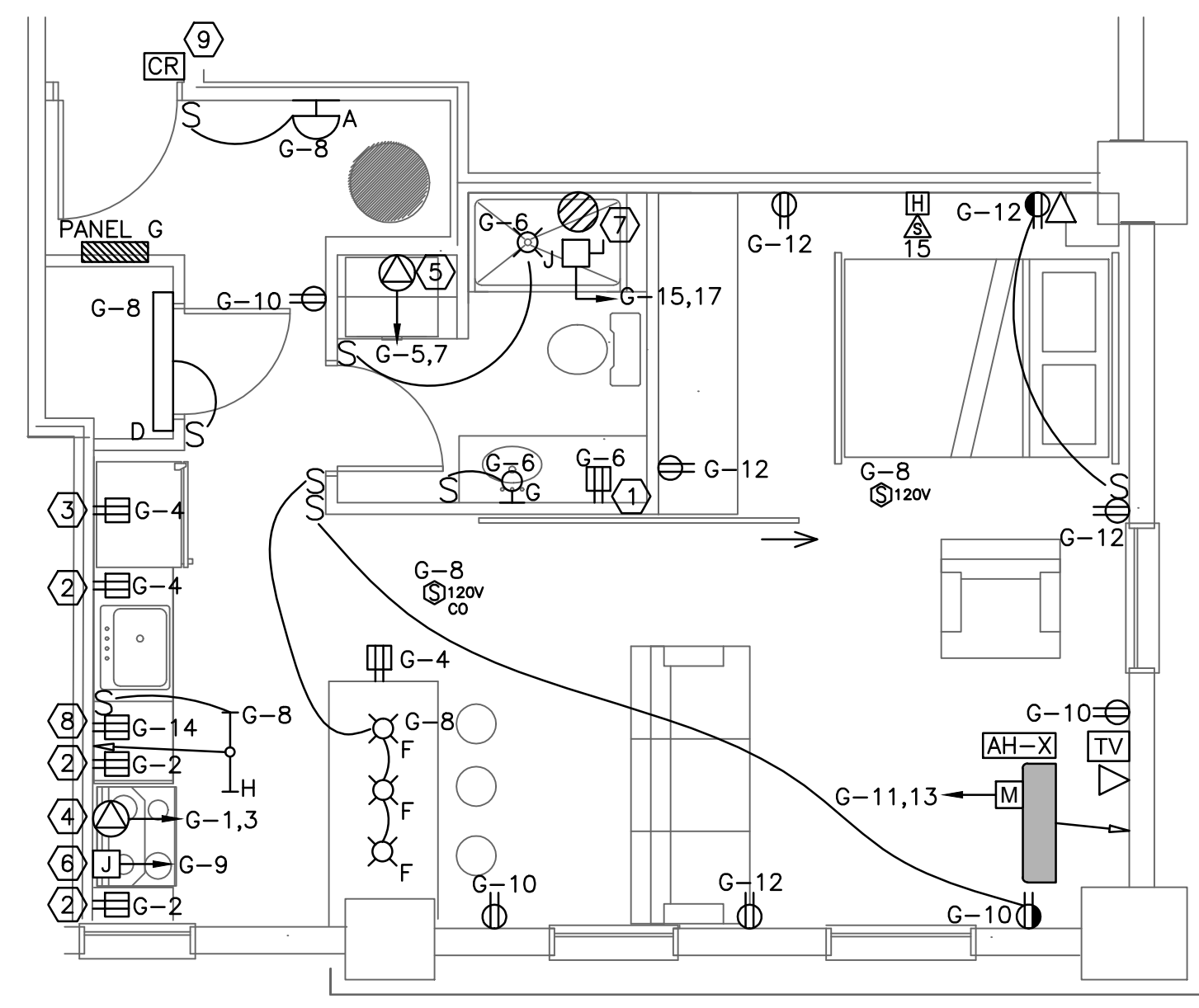
- MOUNT 42" AFF.
- MOUNT RECEPTACLE 6" ABOVE COUNTERTOP. COORDINATE WITH BACKSPLASH.
- REFRIGERATOR WIRE GFI PROJECTION FROM ADJACENT COUNTERTOP RECEPTACLE.
- RANGE WIRING TO BE 3#8AWG & #10GND. COORDINATE NEMA RATING OF RECEPTACLE WITH EQUIPMENT PLUG.
- STACKED WASHER/DRYER. WIRING TO BE 3#10 & #10GND. COORDINATE NEMA RATING OF RECEPTACLE WITH EQUIPMENT PLUG.
- RANGE HOOD WITH LIGHT AND FAN. COORDINATE MOUNTING HEIGHT WITH ARCHITECTURAL ELEVATIONS.
- ELECTRIC WATER HEATER MOUNTED ABOVE BATHROOM WIRING TO BE 2#10AWG & #10GND.
- DISHWASHER. MOUNT UNDER COUNTER. COORDINATE WITH CASEWORK.
- FURNISH BOXES AND CONDUITS TO UNIT CLOSET FOR CARD READER AND ELECTRIC STRIKE LOCATION.
- INSTALL PANELBOARD TO RETAIN FIRE RATING OF WALL.



1 UNIT TYPE E (TYP.)
SCALE: 1/4"=1'



3 UNIT TYPE F (TYP.)
SCALE: 1/4"=1'



5 UNIT TYPE G (TYP.)
SCALE: 1/4"=1'

DIRECTORY	KVA LOAD		BRK #	BRK AMPS	PHASE	BRK AMPS	CKT #	KVA LOAD		DIRECTORY	
	A	B						A	B		
RANGE	4.0		1	50	A	20(1)	2	1.5	KITCHEN COUNTERTOP RECEPTACLES		
		4.0	3		B	20(1)	4	1.5			
STACKABLE/WASHER/DRYER	2.3		5	30	A	20(1)	6	0.3	BATHROOM RECEPTACLE		
		2.3	7		B	20(1)	8	0.3	LIGHTS		
RANGE HOOD	0.3		9	20(1)	A	20(1)	10	0.9	LIVING RECEPTACLES		
AH-X	0.1		11	15	B	20(1)	12	0.9	BEDROOM RECEPTACLES		
		0.1	13		A	20(1)	14	1.0	DISHWASHER		
ELECTRIC WATER HEATER		2.3	15	30	B	20(1)	16	*	SPARE		
		2.3	17		A	20(1)	18	*	SPARE		
SPARE		*	19	20(1)	B	20(1)	20	*	SPARE		
SUBTOTAL		9.0	8.7					3.7	2.7	SUBTOTAL	
VOLTAGE: 120Y/240V		PHASE: 1		POLES: 3		TOTAL KVA A-PHASE		12.7		PANEL	P27, P37, P47, & P57
MAIN LUGS ONLY		BUS AMPS: 100A		TOTAL KVA B-PHASE		11.4					
MOUNTING: RECESSED										LOCATION	UNITS 207, 307, 407, & 507
SHORT CIRCUIT RATING: 10KAIC				TOTAL KVA		24.1					
NOTES: (1) ARC FAULT BREAKER											

2 ELECTRICAL PANEL - UNIT TYPE E (TYP.)
SCALE: NOT TO SCALE

DIRECTORY	KVA LOAD		BRK #	BRK AMPS	PHASE	BRK AMPS	CKT #	KVA LOAD		DIRECTORY	
	A	B						A	B		
RANGE	4.0		1	50	A	20(1)	2	1.5	KITCHEN COUNTERTOP RECEPTACLES		
		4.0	3		B	20(1)	4	1.5			
STACKABLE/WASHER/DRYER	2.3		5	30	A	20(1)	6	0.3	BATHROOM RECEPTACLE		
		2.3	7		B	20(1)	8	0.3	LIGHTS		
RANGE HOOD	0.3		9	20(1)	A	20(1)	10	1.3	LIVING RECEPTACLES		
AH-X	0.1		11	15	B	20(1)	12	0.8	BEDROOM RECEPTACLES		
		0.1	13		A	20(1)	14	1.0	DISHWASHER		
ELECTRIC WATER HEATER		2.3	15	30	B	20(1)	16	*	SPARE		
		2.3	17		A	20(1)	18	*	SPARE		
SPARE		*	19	20(1)	B	20(1)	20	*	SPARE		
SUBTOTAL		9.0	8.7					4.1	2.6	SUBTOTAL	
VOLTAGE: 120Y/240V		PHASE: 1		POLES: 3		TOTAL KVA A-PHASE		13.1		PANEL	P28, P38, P48, & P58
MAIN LUGS ONLY		BUS AMPS: 100A		TOTAL KVA B-PHASE		11.3					
MOUNTING: RECESSED										LOCATION	UNITS 208, 308, 408, & 508
SHORT CIRCUIT RATING: 10KAIC				TOTAL KVA		24.4					
NOTES: (1) ARC FAULT BREAKER											

4 ELECTRICAL PANEL - UNIT TYPE F (TYP.)
SCALE: NOT TO SCALE

DIRECTORY	KVA LOAD		BRK #	BRK AMPS	PHASE	BRK AMPS	CKT #	KVA LOAD		DIRECTORY	
	A	B						A	B		
RANGE	4.0		1	50	A	20(1)	2	1.5	KITCHEN COUNTERTOP RECEPTACLES		
		4.0	3		B	20(1)	4	1.5			
STACKABLE/WASHER/DRYER	2.3		5	30	A	20(1)	6	0.3	BATHROOM RECEPTACLE		
		2.3	7		B	20(1)	8	0.3	LIGHTS		
RANGE HOOD	0.3		9	20(1)	A	20(1)	10	1.3	LIVING RECEPTACLES		
AH-X	0.1		11	15	B	20(1)	12	0.8	BEDROOM RECEPTACLES		
		0.1	13		A	20(1)	14	1.0	DISHWASHER		
ELECTRIC WATER HEATER		2.3	15	30	B	20(1)	16	*	SPARE		
		2.3	17		A	20(1)	18	*	SPARE		
SPARE		*	19	20(1)	B	20(1)	20	*	SPARE		
SUBTOTAL		9.0	8.7					4.1	2.6	SUBTOTAL	
VOLTAGE: 120Y/240V		PHASE: 1		POLES: 3		TOTAL KVA A-PHASE		13.1		PANEL	PL8, P15, P29, P39, P49, & P59
MAIN LUGS ONLY		BUS AMPS: 100A		TOTAL KVA B-PHASE		11.3					
MOUNTING: RECESSED										LOCATION	UNITS 108, 105, 209, 309, 409, & 509
SHORT CIRCUIT RATING: 10KAIC				TOTAL KVA		24.4					
NOTES: (1) ARC FAULT BREAKER											

6 ELECTRICAL PANEL - UNIT TYPE G (TYP.)
SCALE: NOT TO SCALE

revisions

date

MARCH 16th 2016

sheet title

ELECTRICAL DETAILS & PANEL SCHEDULES

scale

AS NOTED

drawn by

JMD

project number

shlotterbeck

sheet number

ISSUED FOR CONSTRUCTION
3-16-2016

E3.2

NOTES:

- SEE E0.0 FOR LEGEND, ABBREVIATIONS AND GENERAL NOTES.
- SEE OVERALL FLOOR PLANS FOR AIR HANDLER UNIT NUMBERS.

KEYED NOTES:

- MOUNT 42" AFF.
- MOUNT RECEPTACLE 6" ABOVE COUNTERTOP. COORDINATE WITH BACKSPASH.
- REFRIGERATOR WIRE GFI PROJECTION FROM ADJACENT COUNTERTOP RECEPTACLE.
- RANGE WIRING TO BE 3#8AWG & #10GND. COORDINATE NEMA RATING OF RECEPTACLE WITH EQUIPMENT PLUG.
- STACKED WASHER/DRYER. WIRING TO BE 3#10 & #10GND. COORDINATE NEMA RATING OF RECEPTACLE WITH EQUIPMENT PLUG.
- RANGE HOOD WITH LIGHT AND FAN. COORDINATE MOUNTING HEIGHT WITH ARCHITECTURAL ELEVATIONS.
- ELECTRIC WATER HEATER MOUNTED ABOVE BATHROOM WIRING TO BE 2#10 & #10GND.
- DISHWASHER MOUNT UNDER COUNTER. COORDINATE WITH CASEWORK.
- FURNISH BOXES AND CONDUITS TO UNIT CLOSET FOR CARD READER AND ELECTRIC STRIKE LOCATION.
- INSTALL PANELBOARD TO RETAIN FIRE RATING OF WALL.

project name

Schlotterbeck Block

117 Preble Street
Portland, Maine

Schlotterbeck Block LLC

goduti/thomas architects

44 oak st.

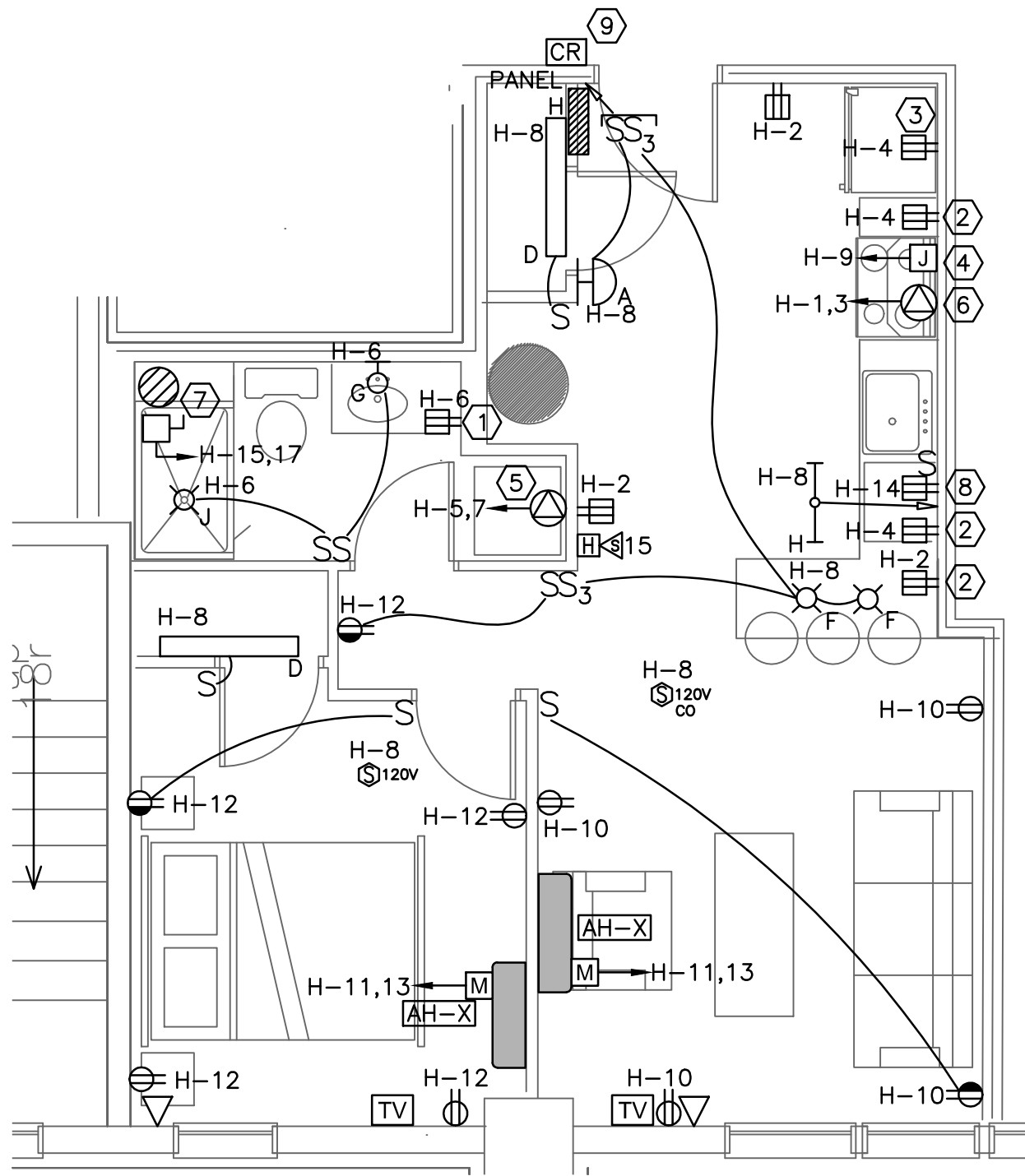
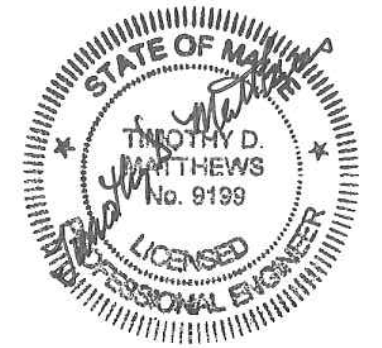
portland, maine 04101

ph. 207-775-3184

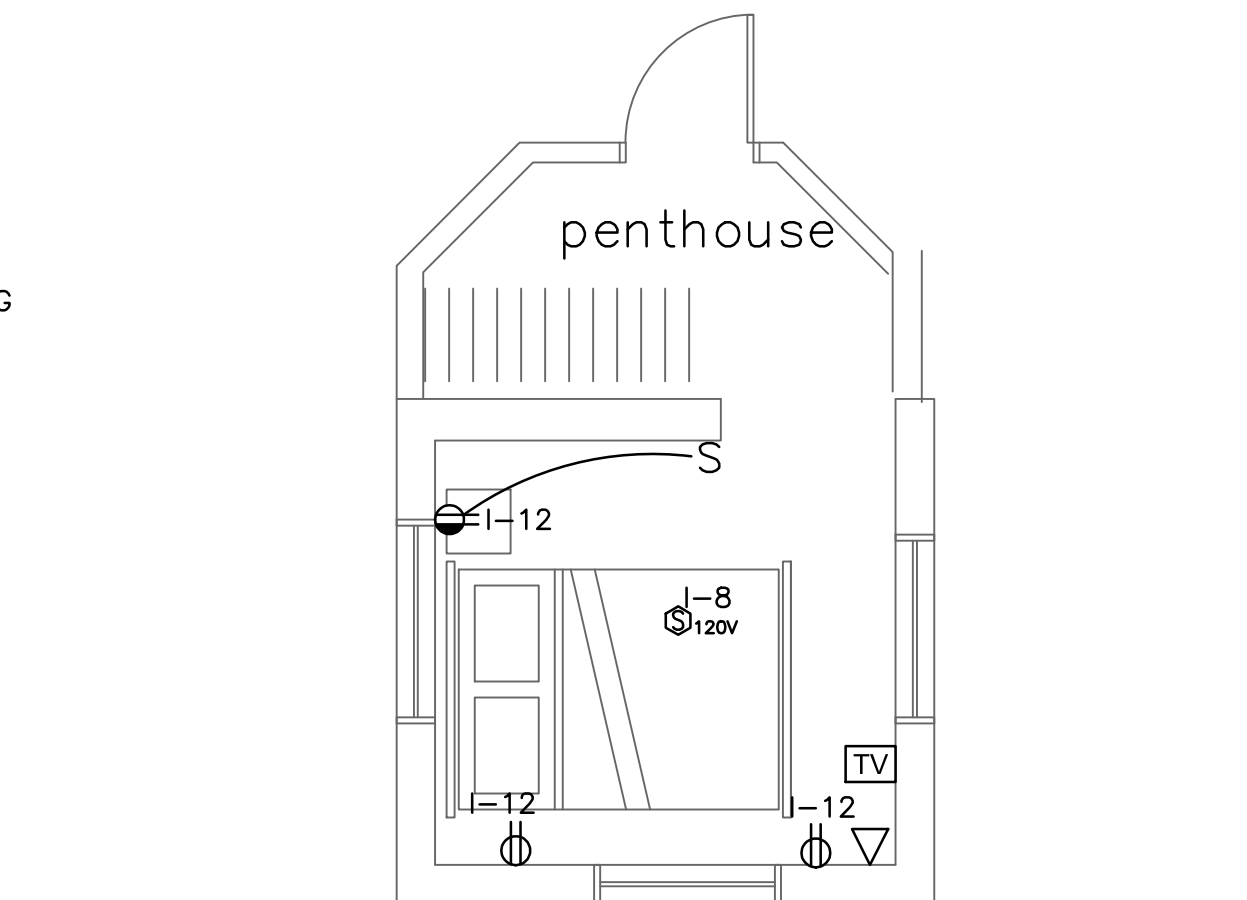
fax 207-774-0846

SWIFTCURRENT

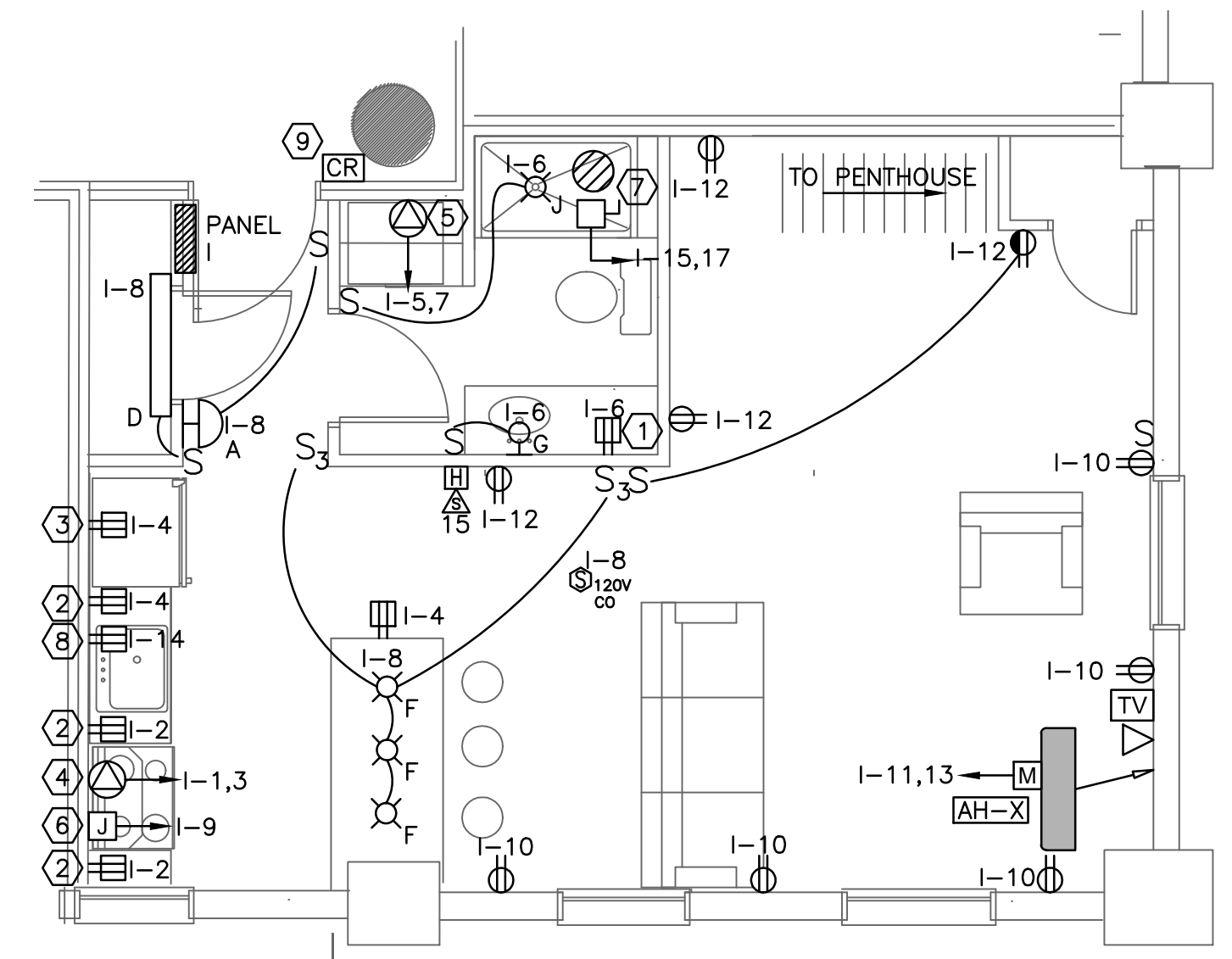
Engineering Services
10 Forest Falls Dr. Unit 4B
Yarmouth, ME 04096
Tel: (207) 847-9280



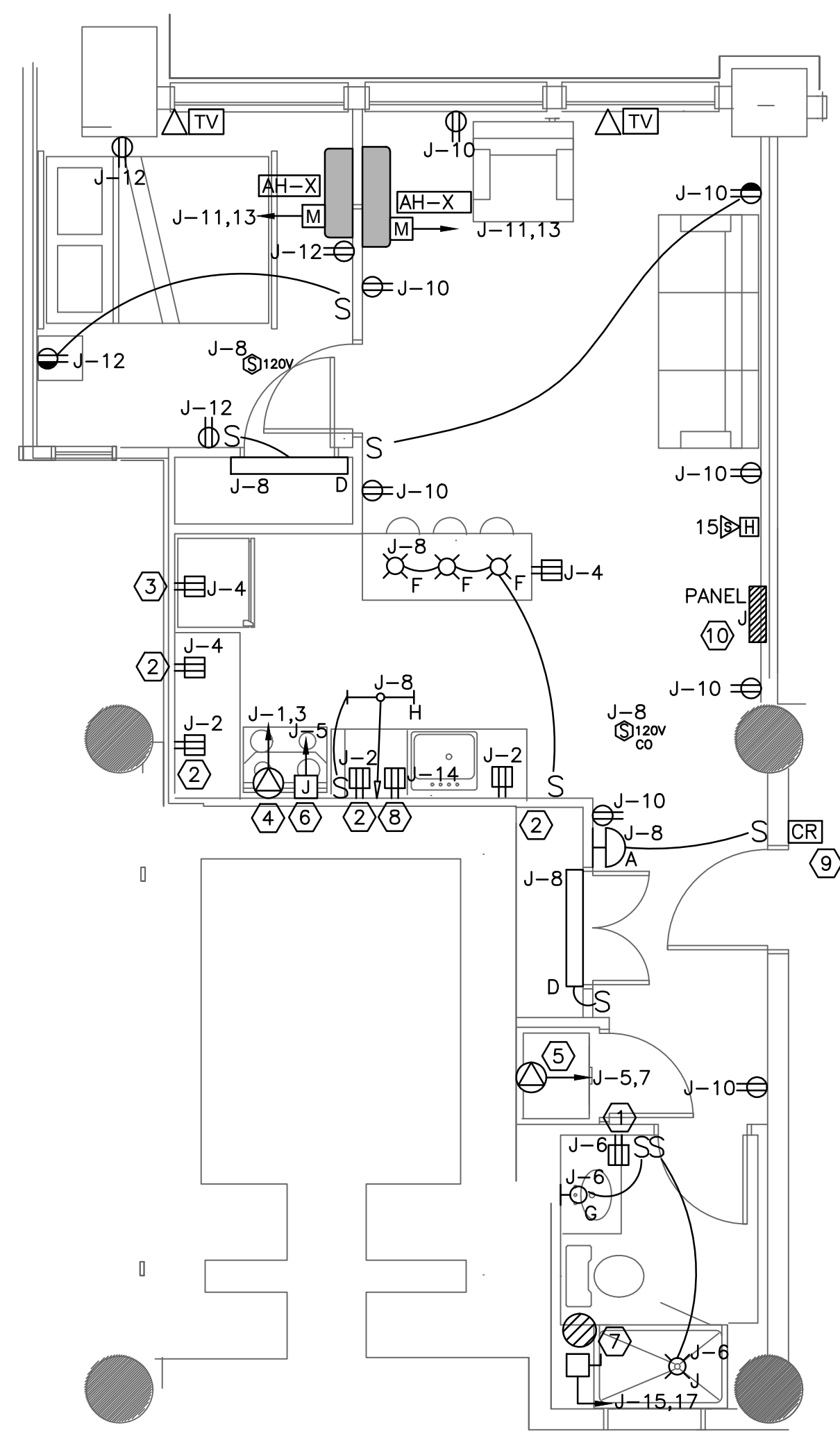
1 UNIT TYPE H (TYP.)
SCALE: 1/4"=1'



7 UNIT TYPE I - PENTHOUSE DETAIL
SCALE: 1/4"=1'



3 UNIT TYPE I
SCALE: 1/4"=1'



5 UNIT TYPE J
SCALE: 1/4"=1'

DIRECTORY	KVA LOAD		CKT #	BKR AMPS	PHASE	BKR AMPS	CKT #	KVA LOAD		DIRECTORY	
	A	B						A	B		
RANGE	4.0		1	50	A	20(1)	2	1.5		KITCHEN COUNTERTOP RECEPTACLES	
		4.0	3		B	20(1)	4	1.5		KITCHEN COUNTERTOP RECEPTACLES	
STACKABLE/WASHER/DRYER	2.3		5	30	A	20(1)	6	0.3		BATHROOM RECEPTACLE	
		2.3	7		B	20(1)	8	0.3		LIGHTS	
RANGE HOOD	0.3		9	20(1)	A	20(1)	10	0.9		LIVING RECEPTACLES	
		0.1	11		B	20(1)	12	0.9		BEDROOM RECEPTACLES	
AH-X	0.1		13	15	A	20(1)	14	1.0		DISHWASHER	
		2.3	15		B	20(1)	16	*		SPARE	
ELECTRIC WATER HEATER		2.3	15	30	A	20(1)	16	*		SPARE	
			17		B	20(1)	18	*		SPARE	
SPARE		*	19	20(1)	A	20(1)	18	*		SPARE	
			19		B	20(1)	20	*		SPARE	
SUBTOTAL	9.0	8.7						3.7	2.7	SUBTOTAL	
VOLTAGE: 120Y/240V		PHASE: 1		POLES: 3		TOTAL KVA A-PHASE		12.7		PANEL	
MAIN LUGS ONLY		BUS AMPS: 100A		TOTAL KVA B-PHASE		11.4				P11	
MOUNTING: RECESSED										LOCATION	
SHORT CIRCUIT RATING: 10KAIC						TOTAL KVA		24.1		UNIT 101	
NOTES: (1) ARC FAULT BREAKER											

2 ELECTRICAL PANEL - UNIT TYPE H (TYP.)
SCALE: NOT TO SCALE

DIRECTORY	KVA LOAD		CKT #	BKR AMPS	PHASE	BKR AMPS	CKT #	KVA LOAD		DIRECTORY	
	A	B						A	B		
RANGE	4.0		1	50	A	20(1)	2	1.5		KITCHEN COUNTERTOP RECEPTACLES	
		4.0	3		B	20(1)	4	1.5		KITCHEN COUNTERTOP RECEPTACLES	
STACKABLE/WASHER/DRYER	2.3		5	30	A	20(1)	6	0.3		BATHROOM RECEPTACLE	
		2.3	7		B	20(1)	8	0.3		LIGHTS	
RANGE HOOD	0.3		9	20(1)	A	20(1)	10	0.9		LIVING RECEPTACLES	
		0.1	11		B	20(1)	12	0.9		BEDROOM RECEPTACLES	
AH-X	0.1		13	15	A	20(1)	14	1.0		DISHWASHER	
		2.3	15		B	20(1)	16	*		SPARE	
ELECTRIC WATER HEATER		2.3	15	30	A	20(1)	16	*		SPARE	
			17		B	20(1)	18	*		SPARE	
SPARE		*	19	20	A	20(1)	18	*		SPARE	
			19		B	20(1)	20	*		SPARE	
SUBTOTAL	9.0	8.7						3.7	2.7	SUBTOTAL	
VOLTAGE: 120Y/240V		PHASE: 1		POLES: 3		TOTAL KVA A-PHASE		12.7		PANEL	
MAIN LUGS ONLY		BUS AMPS: 100A		TOTAL KVA B-PHASE		11.4				PL8	
MOUNTING: RECESSED										LOCATION	
SHORT CIRCUIT RATING: 10KAIC						TOTAL KVA		24.1		UNIT 108	
NOTES: (1) ARC FAULT BREAKER											

4 ELECTRICAL PANEL - UNIT TYPE I
SCALE: NOT TO SCALE

DIRECTORY	KVA LOAD		CKT #	BKR AMPS	PHASE	BKR AMPS	CKT #	KVA LOAD		DIRECTORY	
	A	B						A	B		
RANGE	4.0		1	50	A	20(1)	2	1.5		KITCHEN COUNTERTOP RECEPTACLES	
		4.0	3		B	20(1)	4	1.5		KITCHEN COUNTERTOP RECEPTACLES	
STACKABLE/WASHER/DRYER	2.3		5	30	A	20(1)	6	0.3		BATHROOM RECEPTACLE	
		2.3	7		B	20(1)	8	0.3		LIGHTS	
RANGE HOOD	0.3		9	20(1)	A	20(1)	10	0.9		LIVING RECEPTACLES	
		0.1	11		B	20(1)	12	0.9		BEDROOM RECEPTACLES	
AH-X	0.1		13	15	A	20(1)	14	1.0		DISHWASHER	
		2.3	15		B	20(1)	16	*		SPARE	
ELECTRIC WATER HEATER		2.3	15	30	A	20(1)	16	*		SPARE	
			17		B	20(1)	18	*		SPARE	
SPARE		*	19	20	A	20(1)	18	*		SPARE	
			19		B	20(1)	20	*		SPARE	
SUBTOTAL	9.0	8.7						3.7	2.7	SUBTOTAL	
VOLTAGE: 120Y/240V		PHASE: 1		POLES: 3		TOTAL KVA A-PHASE		12.7		PANEL	
MAIN LUGS ONLY		BUS AMPS: 100A		TOTAL KVA B-PHASE		11.4				P11	
MOUNTING: RECESSED										LOCATION	
SHORT CIRCUIT RATING: 10KAIC						TOTAL KVA		24.1		UNIT 101	
NOTES: (1) ARC FAULT BREAKER											

6 ELECTRICAL PANEL - UNIT TYPE J
SCALE: NOT TO SCALE

ISSUED FOR CONSTRUCTION
3-16-2016

revisions

date

MARCH 16th 2016

sheet title

ELECTRICAL DETAILS & PANEL SCHEDULES

scale

AS NOTED

drawn by

JMD

project number

slotterbeck

sheet number

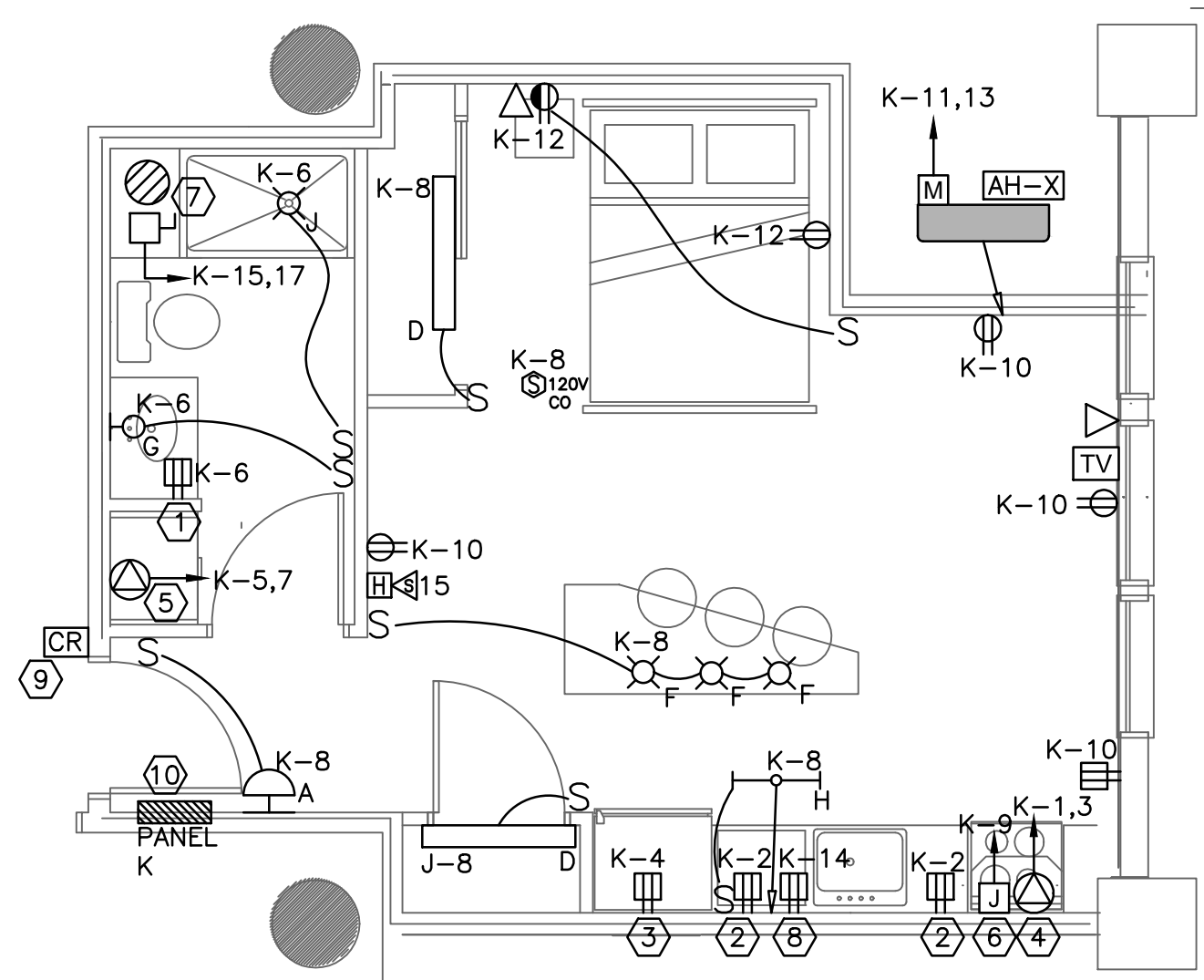
E3.3

NOTES:

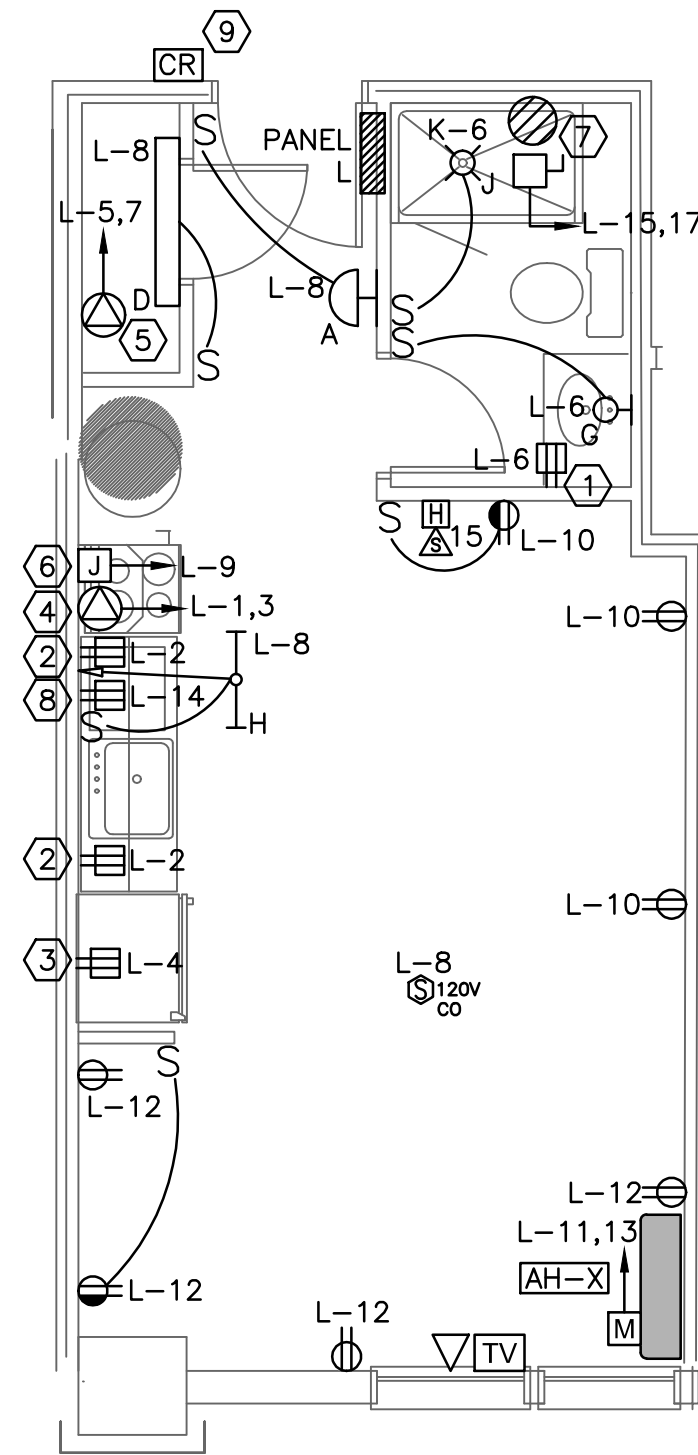
- SEE E0.0 FOR LEGEND, ABBREVIATIONS AND GENERAL NOTES.
- SEE OVERALL FLOOR PLANS FOR AIR HANDLER UNIT NUMBERS.

KEYED NOTES:

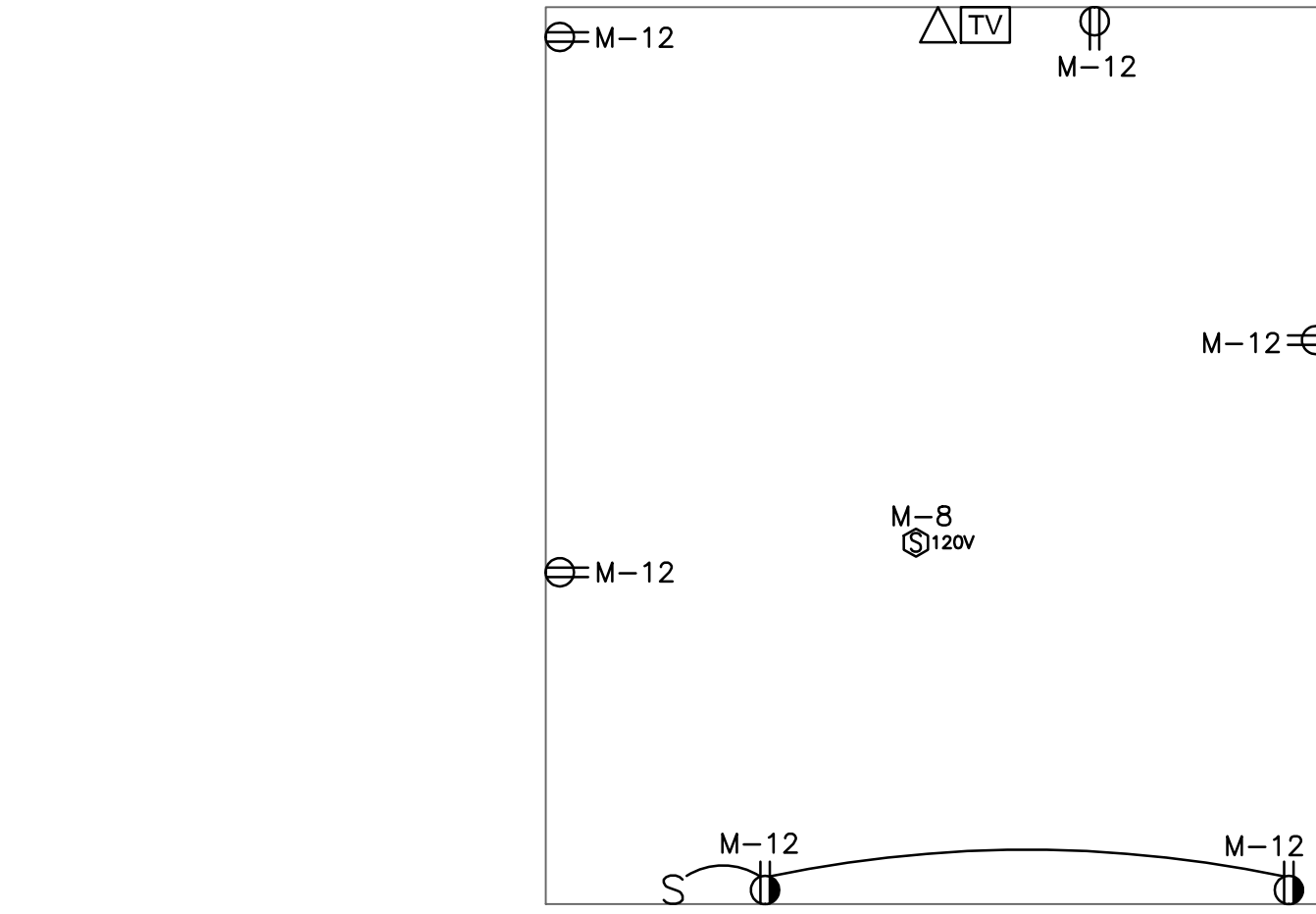
- MOUNT 42" AFF.
- MOUNT RECEPTACLE 6" ABOVE COUNTERTOP. COORDINATE WITH BACKSPLASH.
- REFRIGERATOR WIRE GFI PROJECTION FROM ADJACENT COUNTERTOP RECEPTACLE.
- RANGE WIRING TO BE 3#8AWG & #10GND. COORDINATE NEMA RATING OF RECEPTACLE WITH EQUIPMENT PLUG.
- STACKED WASHER/DRYER. WIRING TO BE 3#10 & #10GND. COORDINATE NEMA RATING OF RECEPTACLE WITH EQUIPMENT PLUG.
- RANGE HOOD WITH LIGHT AND FAN. COORDINATE MOUNTING HEIGHT WITH ARCHITECTURAL ELEVATIONS.
- ELECTRIC WATER HEATER MOUNTED ABOVE BATHROOM WIRING TO BE 2#10 & #10GND.
- DISHWASHER MOUNT UNDER COUNTER. COORDINATE WITH CASEWORK.
- FURNISH BOXES AND CONDUITS TO UNIT CLOSET FOR CARD READER AND ELECTRIC STRIKE LOCATION.
- INSTALL PANELBOARD TO RETAIN FIRE RATING OF WALL.



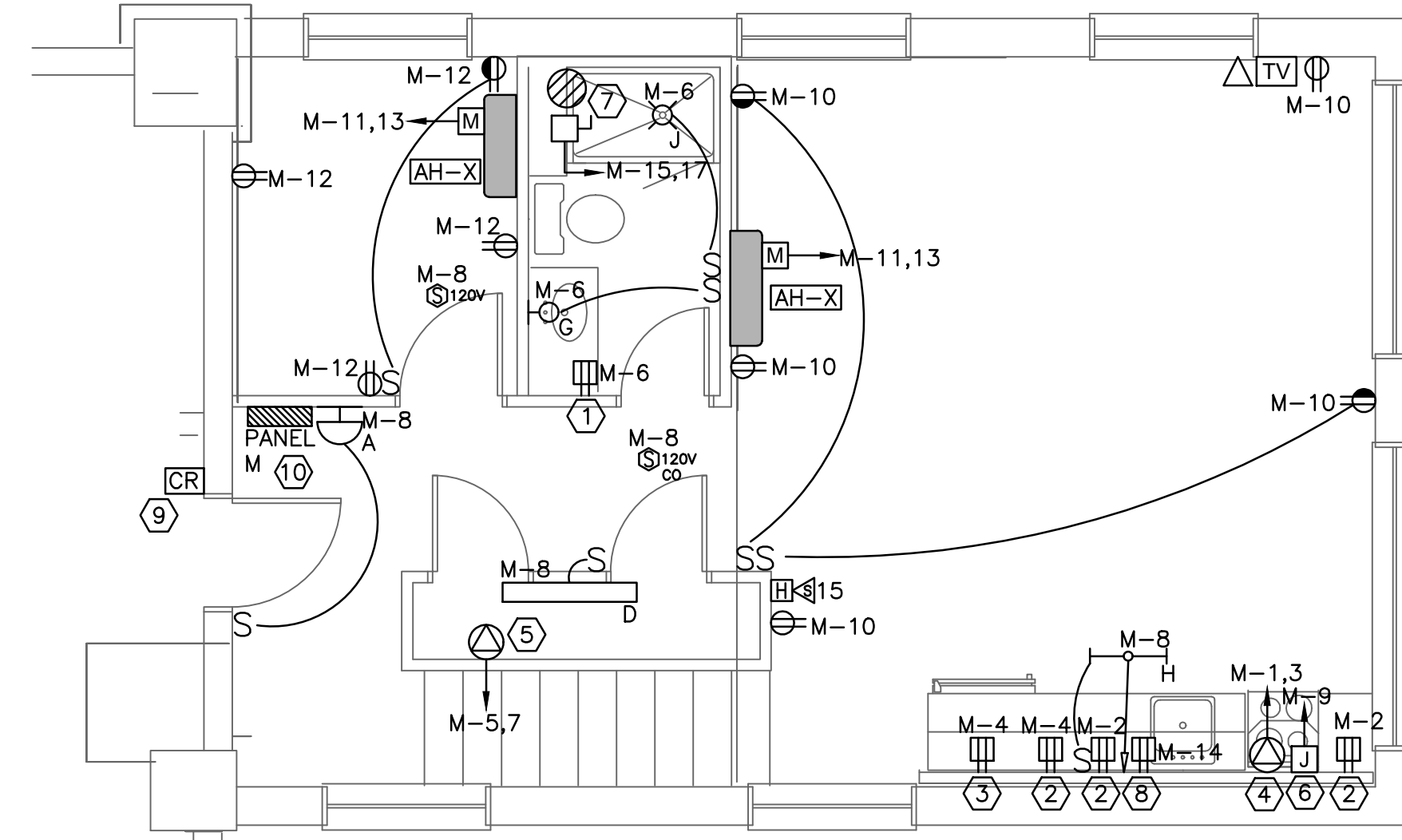
1 UNIT TYPE K (TYP.)
SCALE: 1/4"=1'



3 UNIT TYPE L (TYP.)
SCALE: 1/4"=1'



7 BEDROOM LOFT - TYPE M
SCALE: 1/4"=1'



5 UNIT TYPE M
SCALE: 1/4"=1'

DIRECTORY	KVA LOAD		BRK #	BRK AMPS	PHASE	BRK AMPS	CKT #	KVA LOAD		DIRECTORY	
	A	B						A	B		
RANGE	4.0	1	50		A	20(1)	2	1.5		KITCHEN COUNTERTOP RECEPTACLES	
	4.0	3			B	20(1)	4	1.5		KITCHEN COUNTERTOP RECEPTACLES	
STACKABLE/WASHER/DRYER	2.3	5	30		A	20(1)	6	0.3		BATHROOM RECEPTACLE	
	2.3	7			B	20(1)	8	0.3		LIGHTS	
RANGE HOOD	0.3	9	20(1)		A	20(1)	10	0.9		LIVING RECEPTACLES	
AH-X	0.1	11	15		B	20(1)	12	0.9		BEDROOM RECEPTACLES	
	0.1	13			A	20(1)	14	1.0		DISHWASHER	
ELECTRIC WATER HEATER	2.3	15	30		B	20(1)	16	*		SPARE	
	2.3	17			A	20(1)	18	*		SPARE	
SPARE	*	19	20(1)		B	20(1)	20	*		SPARE	
SUBTOTAL	9.0	8.7						3.7	2.7	SUBTOTAL	
VOLTAGE: 120Y/240V		PHASE: 1		POLES: 3		TOTAL KVA A-PHASE		12.7		PANEL	PL7 & P14
MAIN LUGS ONLY		BUS AMPS: 100A		TOTAL KVA B-PHASE		11.4					
MOUNTING: RECESSED										LOCATION	UNITS L07 & 104
SHORT CIRCUIT RATING: 10KAIC						TOTAL KVA		24.1			
NOTES: (1) ARC FAULT BREAKER											

2 ELECTRICAL PANEL - UNIT TYPE K (TYP.)
SCALE: NOT TO SCALE

DIRECTORY	KVA LOAD		BRK #	BRK AMPS	PHASE	BRK AMPS	CKT #	KVA LOAD		DIRECTORY	
	A	B						A	B		
RANGE	4.0	1	50		A	20(1)	2	1.5		KITCHEN COUNTERTOP RECEPTACLES	
	4.0	3			B	20(1)	4	1.5		KITCHEN COUNTERTOP RECEPTACLES	
STACKABLE/WASHER/DRYER	2.3	5	30		A	20(1)	6	0.3		BATHROOM RECEPTACLE	
	2.3	7			B	20(1)	8	0.3		LIGHTS	
RANGE HOOD	0.3	9	20(1)		A	20(1)	10	0.5		LIVING RECEPTACLES	
AH-X	0.1	11	15		B	20(1)	12	0.7		BEDROOM RECEPTACLES	
	0.1	13			A	20(1)	14	1.0		DISHWASHER	
ELECTRIC WATER HEATER	2.3	15	30		B	20(1)	16	*		SPARE	
	2.3	17			A	20(1)	18	*		SPARE	
SPARE	*	19	20(1)		B	20(1)	20	*		SPARE	
SUBTOTAL	9.0	8.7						3.3	2.5	SUBTOTAL	
VOLTAGE: 120Y/240V		PHASE: 1		POLES: 3		TOTAL KVA A-PHASE		12.3		PANEL	PL9, P16
MAIN LUGS ONLY		BUS AMPS: 100A		TOTAL KVA B-PHASE		11.2					
MOUNTING: RECESSED										LOCATION	UNIT L09 & 106
SHORT CIRCUIT RATING: 10KAIC						TOTAL KVA		23.5			
NOTES: (1) ARC FAULT BREAKER											

4 ELECTRICAL PANEL - UNIT TYPE L (TYP.)
SCALE: NOT TO SCALE

DIRECTORY	KVA LOAD		BRK #	BRK AMPS	PHASE	BRK AMPS	CKT #	KVA LOAD		DIRECTORY	
	A	B						A	B		
RANGE	4.0	1	50		A	20(1)	2	0.4		KITCHEN COUNTERTOP RECEPTACLES	
	4.0	3			B	20(1)	4	0.4		KITCHEN COUNTERTOP RECEPTACLES	
STACKABLE/WASHER/DRYER	2.3	5	30		A	20(1)	6	0.3		BATHROOM RECEPTACLE	
	2.3	7			B	20(1)	8	0.3		LIGHTS	
RANGE HOOD	0.3	9	20(1)		A	20(1)	10	1.0		LIVING RECEPTACLES	
AH-X	0.1	11	15		B	20(1)	12	1.2		BEDROOM RECEPTACLES	
	0.1	13			A	20(1)	14	1.0		DISHWASHER	
ELECTRIC WATER HEATER	2.3	15	30		B	20(1)	16	*		SPARE	
	2.3	17			A	20(1)	18	*		SPARE	
SPARE	*	19	20(1)		B	20(1)	20	*		SPARE	
SUBTOTAL	9.0	8.7						2.7	1.9	SUBTOTAL	
VOLTAGE: 120Y/240V		PHASE: 1		POLES: 3		TOTAL KVA A-PHASE		11.7		PANEL	PL6
MAIN LUGS ONLY		BUS AMPS: 100A		TOTAL KVA B-PHASE		10.6					
MOUNTING: RECESSED										LOCATION	UNIT L06
SHORT CIRCUIT RATING: 10KAIC						TOTAL KVA		22.3			
NOTES: (1) ARC FAULT BREAKER											

6 ELECTRICAL PANEL - UNIT TYPE M
SCALE: NOT TO SCALE

project name

Schlotterbeck Block

117 Preble Street
Portland, Maine

Schlotterbeck Block LLC

goduti/thomas architects

44 oak st.

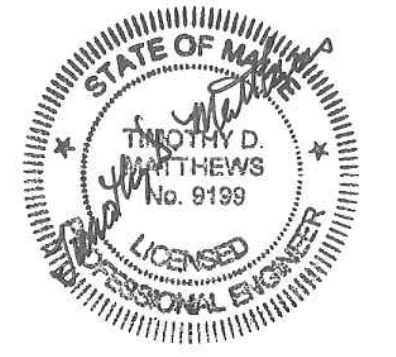
portland, maine 04101

ph. 207-775-3184

fax 207-774-0846

SWIFTCURRENT

Engineering Services
10 Forest Falls Dr. Unit 4B
Yarmouth, ME 04096
Tel: (207) 847-9280



revisions

date

MARCH 16th 2016

sheet title

ELECTRICAL DETAILS & PANEL SCHEDULES

scale

AS NOTED

drawn by

JMD

project number

shlotterbeck

sheet number

ISSUED FOR CONSTRUCTION
3-16-2016

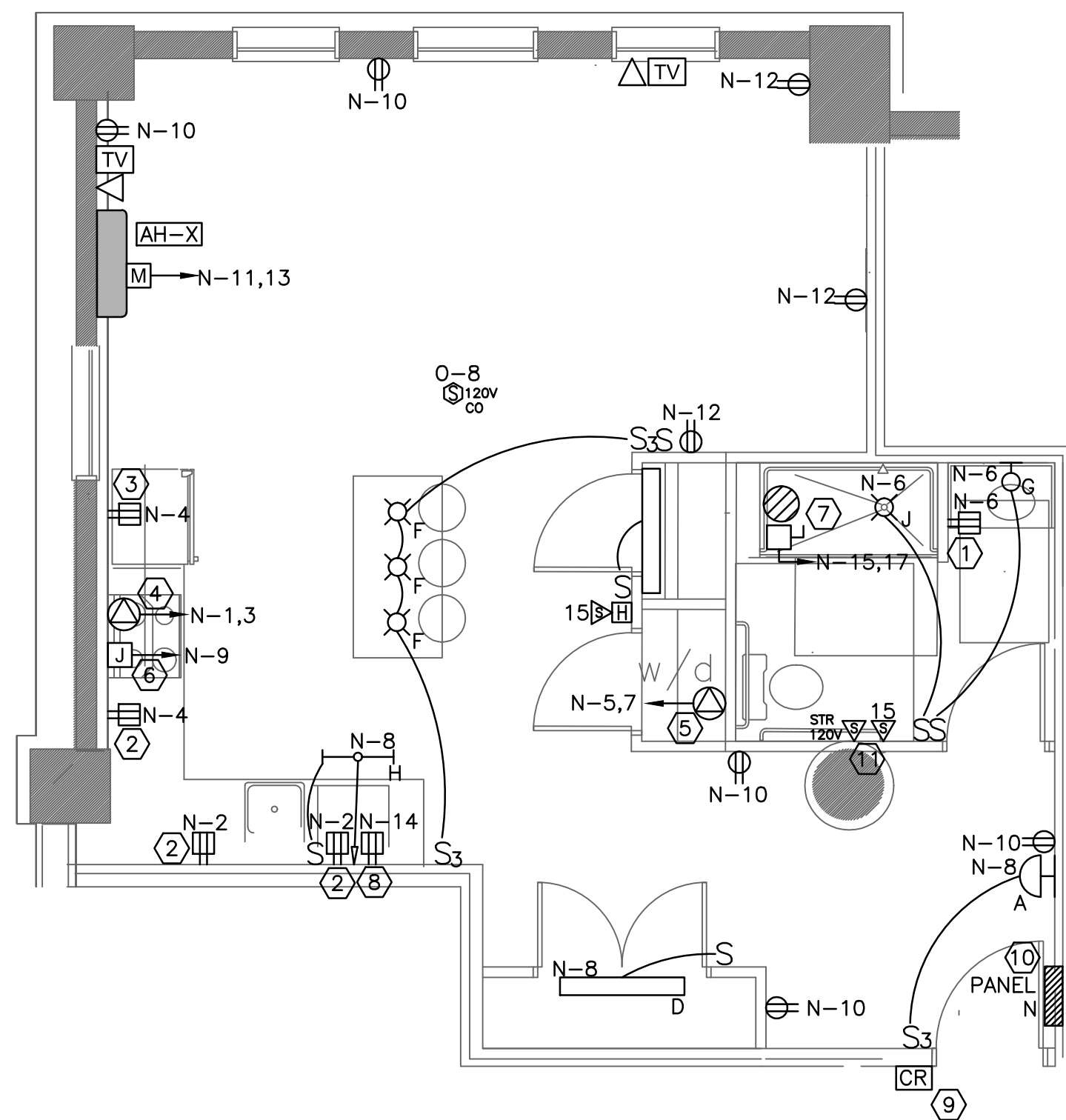
E3.4

NOTES:

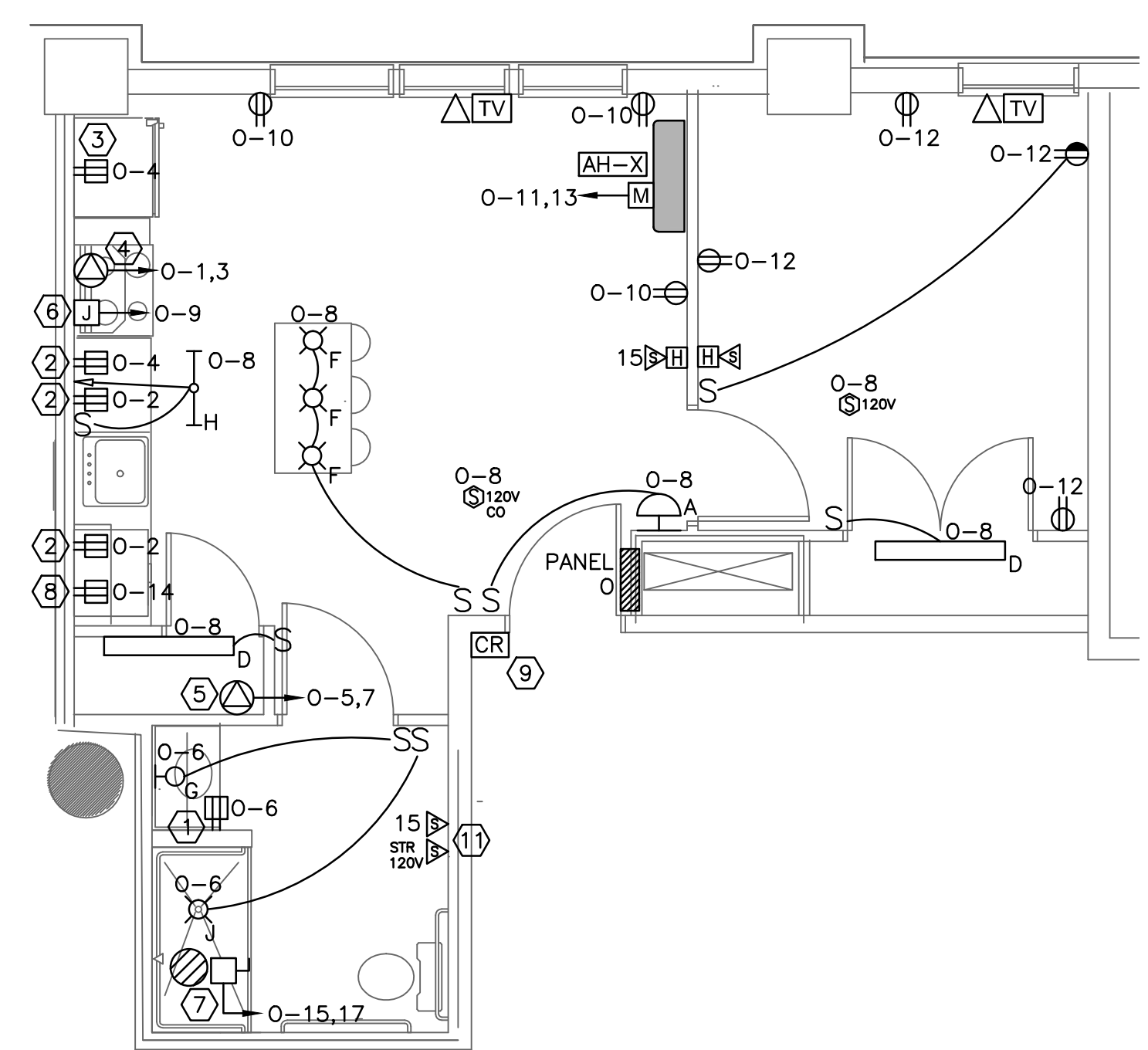
- SEE E.O.0 FOR LEGEND, ABBREVIATIONS AND GENERAL NOTES.
- SEE OVERALL FLOOR PLANS FOR AIR HANDLER UNIT NUMBERS.

KEYED NOTES:

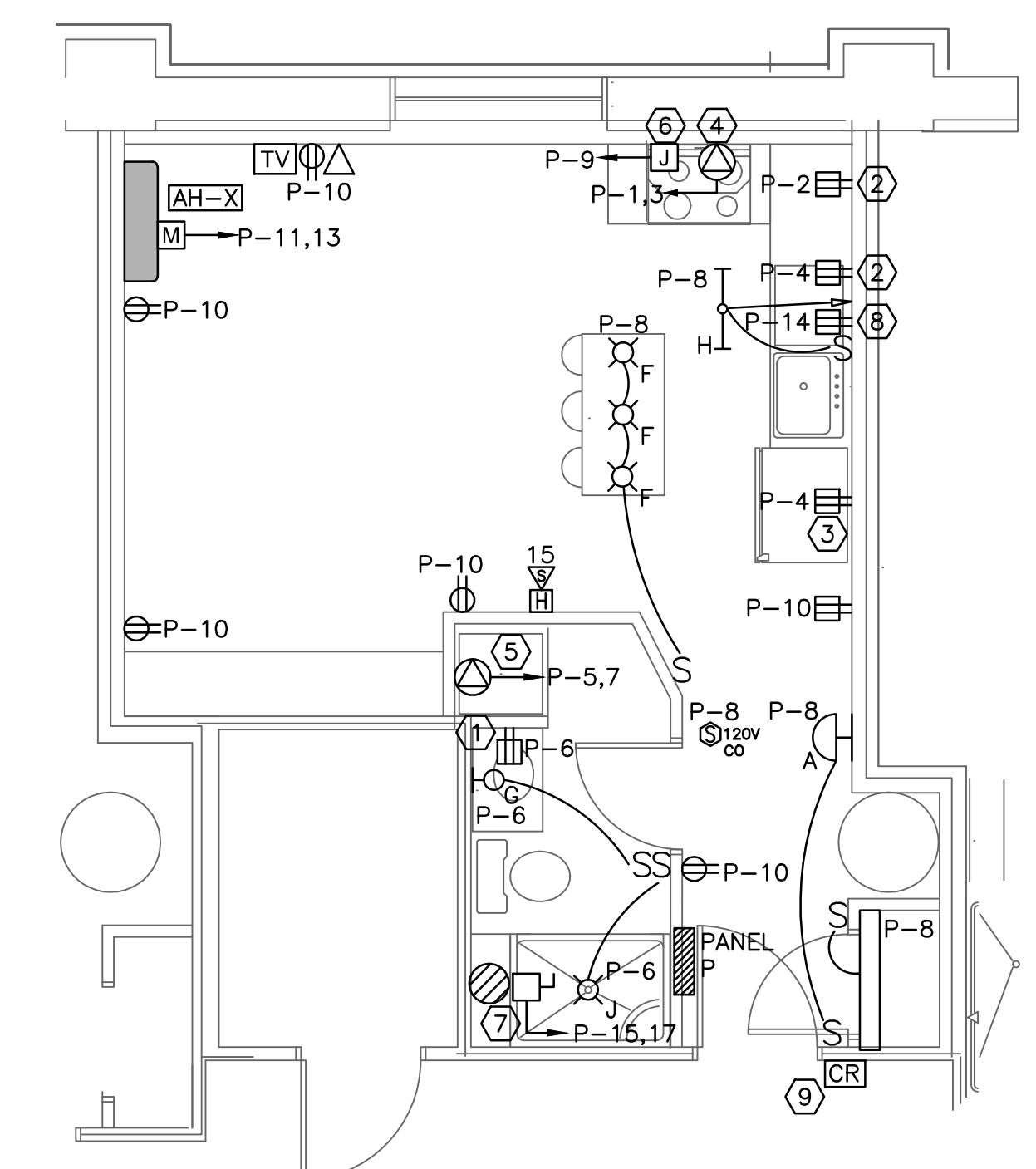
- MOUNT 42" AFF.
- MOUNT RECEPTACLE 6" ABOVE COUNTERTOP. COORDINATE WITH BACKSPLASH.
- REFRIGERATOR WIRE GFI PROJECTION FROM ADJACENT COUNTERTOP RECEPTACLE.
- RANGE WIRING TO BE 3#8AWG & #10GND. COORDINATE NEMA RATING OF RECEPTACLE WITH EQUIPMENT PLUG.
- STACKED WASHER/DRYER. WIRING TO BE 3#10 & #10GND. COORDINATE NEMA RATING OF RECEPTACLE WITH EQUIPMENT PLUG.
- RANGE HOOD WITH LIGHT AND FAN. COORDINATE MOUNTING HEIGHT WITH ARCHITECTURAL ELEVATIONS.
- ELECTRIC WATER HEATER MOUNTED ABOVE BATHROOM WIRING TO BE 2#10 & #10GND.
- DISHWASHER MOUNT UNDER COUNTER. COORDINATE WITH CASEWORK.
- FURNISH BOXES AND CONDUITS TO UNIT CLOSET FOR CARD READER AND ELECTRIC STRIKE LOCATION.
- INSTALL PANELBOARD TO RETAIN FIRE RATING OF WALL.
- STOBE FOR ADA UNITS(L03, L05, 103) ONLY.



1 UNIT TYPE N (UNIT L03)
SCALE: 1/4"=1'



3 UNIT TYPE O (TYP.)
SCALE: 1/4"=1'



5 UNIT TYPE P (TYP.)
SCALE: 1/4"=1'

DIRECTORY	KVA LOAD		BRK #	BRK AMPS	PHASE	BRK AMPS	CTKT #	KVA LOAD		DIRECTORY	
	A	B						A	B		
RANGE	4.0		1	50	A	20(1)	2	1.5		KITCHEN COUNTERTOP RECEPTACLES	
		4.0	3		B	20(1)	4	1.5		KITCHEN COUNTERTOP RECEPTACLES	
STACKABLE/WASHER/DRYER	2.3		5	30	A	20(1)	6	0.3		BATHROOM RECEPTACLE	
		2.3	7		B	20(1)	8	0.3		LIGHTS	
RANGE HOOD	0.3		9	20(1)	A	20(1)	10	0.9		LIVING RECEPTACLES	
AH-X		0.1	11	15	B	20(1)	12	0.6		BEDROOM RECEPTACLES	
		0.1	13		A	20(1)	14	1.0		DISHWASHER	
ELECTRIC WATER HEATER		2.3	15	30	B	20(1)	16	*		SPARE	
		2.3	17		A	20(1)	18	*		SPARE	
SPARE		*	19	20(1)	B	20(1)	20	*		SPARE	
SUBTOTAL	9.0	8.7						3.7	2.4	SUBTOTAL	
VOLTAGE: 120Y/240V PHASE: 1 POLES: 3				TOTAL KVA A-PHASE		12.7				PANEL	
MAIN LUGS ONLY BUS AMPS: 100A				TOTAL KVA B-PHASE		11.1				PL3	
MOUNTING: RECESSED										LOCATION	
SHORT CIRCUIT RATING: 10KAIC				TOTAL KVA		23.8				UNIT L03	
NOTES: (1) ARC FAULT BREAKER											

2 ELECTRICAL PANEL – UNIT L03
SCALE: NOT TO SCALE

DIRECTORY	KVA LOAD		BRK #	BRK AMPS	PHASE	BRK AMPS	CTKT #	KVA LOAD		DIRECTORY	
	A	B						A	B		
RANGE	4.0		1	50	A	20(1)	2	1.5		KITCHEN COUNTERTOP RECEPTACLES	
		4.0	3		B	20(1)	4	1.5		KITCHEN COUNTERTOP RECEPTACLES	
STACKABLE/WASHER/DRYER	2.3		5	30	A	20(1)	6	0.3		BATHROOM RECEPTACLE	
		2.3	7		B	20(1)	8	0.3		LIGHTS	
RANGE HOOD	0.3		9	20(1)	A	20(1)	10	0.9		LIVING RECEPTACLES	
AH-X		0.1	11	15	B	20(1)	12	0.6		BEDROOM RECEPTACLES	
		0.1	13		A	20(1)	14	1.0		DISHWASHER	
ELECTRIC WATER HEATER		2.3	15	30	B	20(1)	16	*		SPARE	
		2.3	17		A	20(1)	18	*		SPARE	
SPARE		*	19	20(1)	B	20(1)	20	*		SPARE	
SUBTOTAL	9.0	8.7						3.7	2.4	SUBTOTAL	
VOLTAGE: 120Y/240V PHASE: 1 POLES: 3				TOTAL KVA A-PHASE		12.7				PANEL	
MAIN LUGS ONLY BUS AMPS: 100A				TOTAL KVA B-PHASE		11.1				PL5 & P13	
MOUNTING: RECESSED										LOCATION	
SHORT CIRCUIT RATING: 10KAIC				TOTAL KVA		23.8				UNITS L05 & 103	
NOTES: (1) ARC FAULT BREAKER											

4 ELECTRICAL PANEL – UNIT TYPE O (TYP.)
SCALE: NOT TO SCALE

DIRECTORY	KVA LOAD		BRK #	BRK AMPS	PHASE	BRK AMPS	CTKT #	KVA LOAD		DIRECTORY	
	A	B						A	B		
RANGE	4.0		1	50	A	20(1)	2	1.5		KITCHEN COUNTERTOP RECEPTACLES	
		4.0	3		B	20(1)	4	1.5		KITCHEN COUNTERTOP RECEPTACLES	
STACKABLE/WASHER/DRYER	2.3		5	30	A	20(1)	6	0.3		BATHROOM RECEPTACLE	
		2.3	7		B	20(1)	8	0.3		LIGHTS	
RANGE HOOD	0.3		9	20(1)	A	20(1)	10	0.9		LIVING RECEPTACLES	
AH-X		0.1	11	15	B	20(1)	12	0.6		BEDROOM RECEPTACLES	
		0.1	13		A	20(1)	14	1.0		DISHWASHER	
ELECTRIC WATER HEATER		2.3	15	30	B	20(1)	16	*		SPARE	
		2.3	17		A	20(1)	18	*		SPARE	
SPARE		*	19	20(1)	B	20(1)	20	*		SPARE	
SUBTOTAL	9.0	8.7						3.7	2.4	SUBTOTAL	
VOLTAGE: 120Y/240V PHASE: 1 POLES: 3				TOTAL KVA A-PHASE		12.7				PANEL	
MAIN LUGS ONLY BUS AMPS: 100A				TOTAL KVA B-PHASE		11.1				PL10	
MOUNTING: RECESSED										LOCATION	
SHORT CIRCUIT RATING: 10KAIC				TOTAL KVA		23.8				UNIT L10	
NOTES: (1) ARC FAULT BREAKER											

6 ELECTRICAL PANEL – UNIT TYPE P (TYP.)
SCALE: NOT TO SCALE

project name

Schlotterbeck Block

117 Preble Street
Portland, Maine

Schlotterbeck Block LLC

goduti/thomas architects

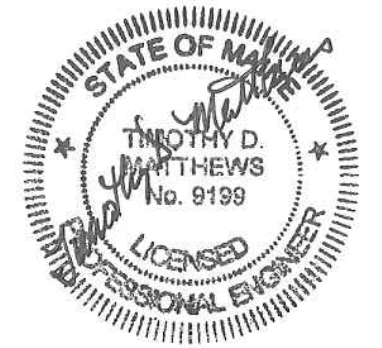
44 oak st.

portland, maine 04101

ph. 207-775-3184

fax 207-774-0846

SWIFTCURRENT
Engineering Services
10 Forest Falls Dr. Unit 4B
Yarmouth, ME 04096
Tel: (207) 847-9280



revisions

date

MARCH 16th 2016

sheet title

ELECTRICAL DETAILS & PANEL SCHEDULES

scale

AS NOTED

drawn by

JMD

project number

shlotterbeck

sheet number

ISSUED FOR CONSTRUCTION
3-16-2016

E3.5