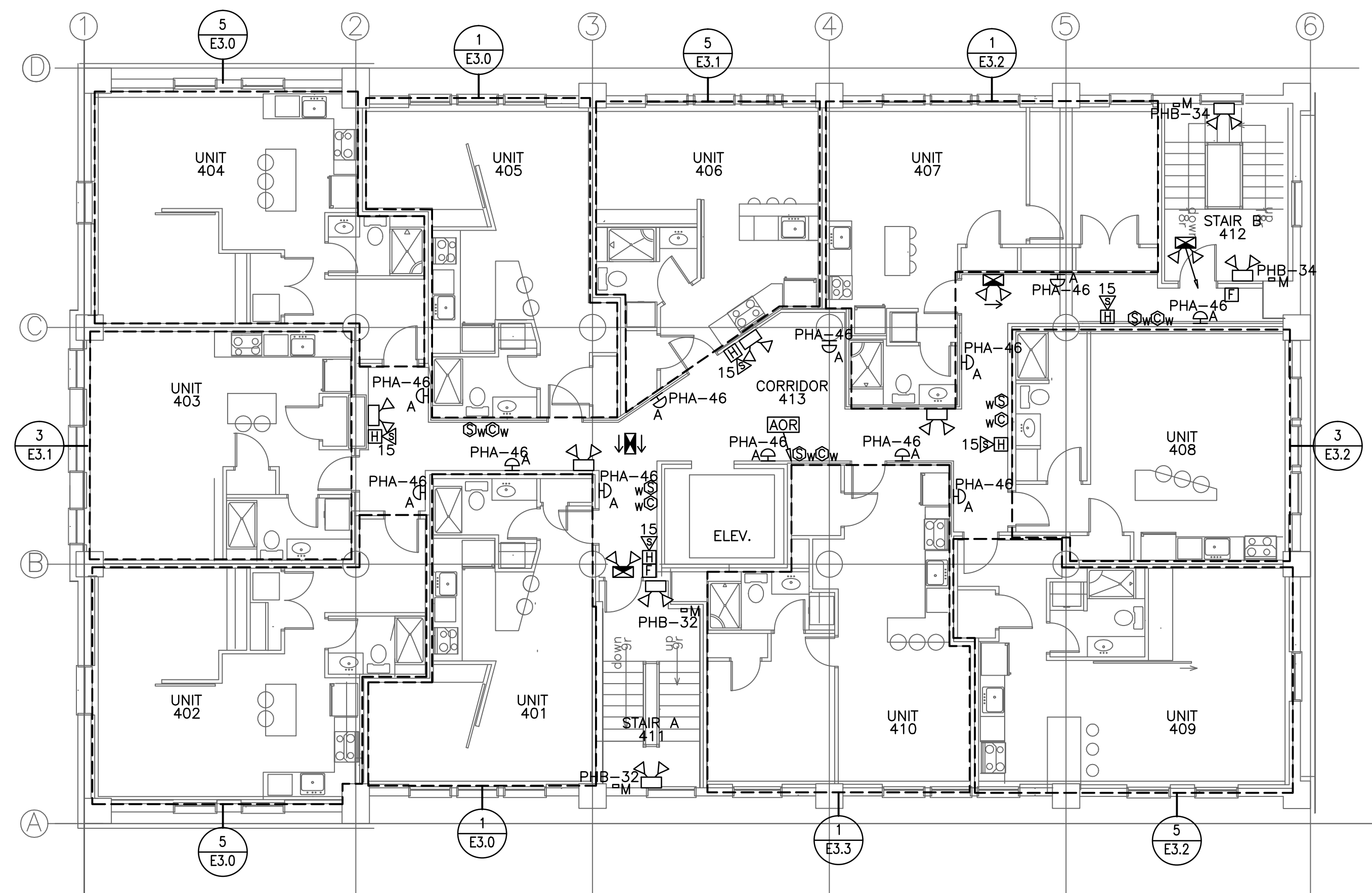


2 ELECTRICAL LIGHTING & FIRE ALARM PLAN – FIFTH FLOOR  
SCALE: 1/8"=1'



1 ELECTRICAL LIGHTING & FIRE ALARM PLAN – FOURTH FLOOR  
SCALE: 1/8"=1'

**NOTES:**

1. SEE E0.0 FOR LEGEND, ABBREVIATIONS AND GENERAL NOTES.

**KEYED NOTES:**

① HRV-1 SUPPLY AND RETURN DUCT SMOKE DETECTORS, LOCATED ABOVE-CEILING.

project name

**Schlotterbeck Block**

117 Preble Street  
Portland, Maine

**Schlotterbeck Block LLC**

goduti/thomas architects

44 oak st.

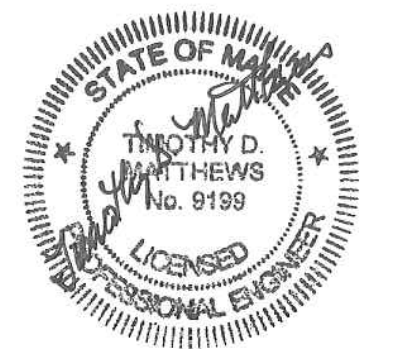
portland, maine 04101

ph. 207-775-3184

fax 207-774-0846

**SWIFTCURRENT**

Engineering Services  
10 Forest Falls Dr. Unit 4B  
Yarmouth, ME 04096  
Tel: (207) 847-9280



revisions

date  
MARCH 16th 2016

sheet title

ELECTRICAL LIGHTING  
& FIRE ALARM PLAN  
– FOURTH & FIFTH  
FLOOR

scale  
AS NOTED

drawn by  
JMD

project number  
shlotterbeck

sheet number

ISSUED FOR CONSTRUCTION  
3-16-2016

E2.2