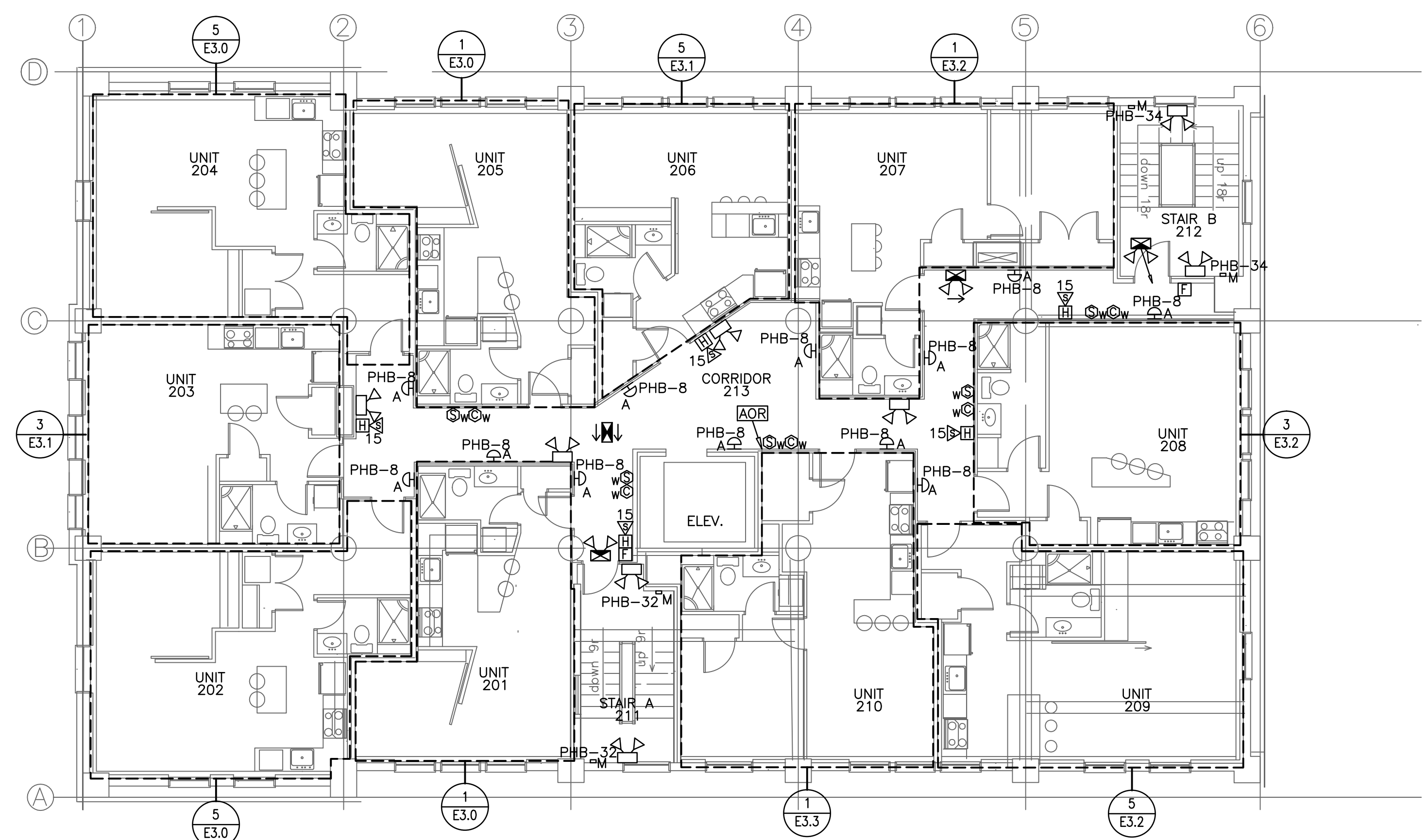


**2** ELECTRICAL LIGHTING & FIRE ALARM PLAN – THIRD FLOOR  
SCALE: 1/8"=1'



**1** ELECTRICAL LIGHTING & FIRE ALARM PLAN – SECOND FLOOR  
SCALE: 1/8"=1'

**NOTES:**

1. SEE E0.0 FOR LEGEND, ABBREVIATIONS AND GENERAL NOTES.

project name

**Schlotterbeck Block**

117 Preble Street  
Portland, Maine

Schlotterbeck Block LLC  
 goduti/thomas architects

44 oak st.

portland, maine 04101

ph. 207-775-3184

fax 207-774-0846

**SWIFTCURRENT**  
Engineering Services  
10 Forest Falls Dr. Unit 4B  
Yarmouth, ME 04096  
Tel: (207) 847-9280



revisions

date  
MARCH 16th 2016

sheet title

ELECTRICAL LIGHTING & FIRE ALARM PLAN – SECOND & THIRD FLOOR

scale  
AS NOTED

drawn by  
JMD

project number  
shlotterbeck

sheet number

ISSUED FOR CONSTRUCTION  
3-16-2016

E2.1