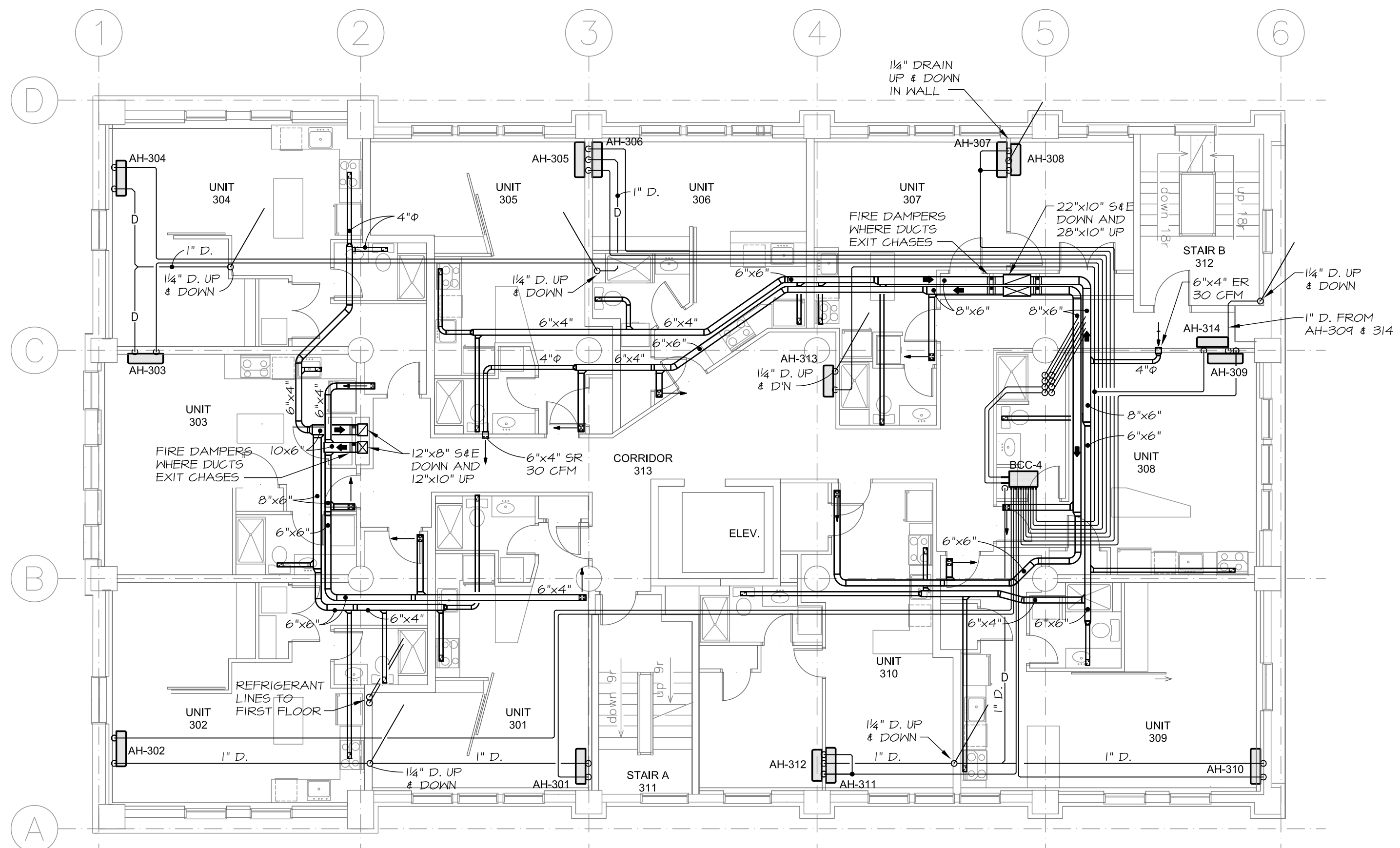


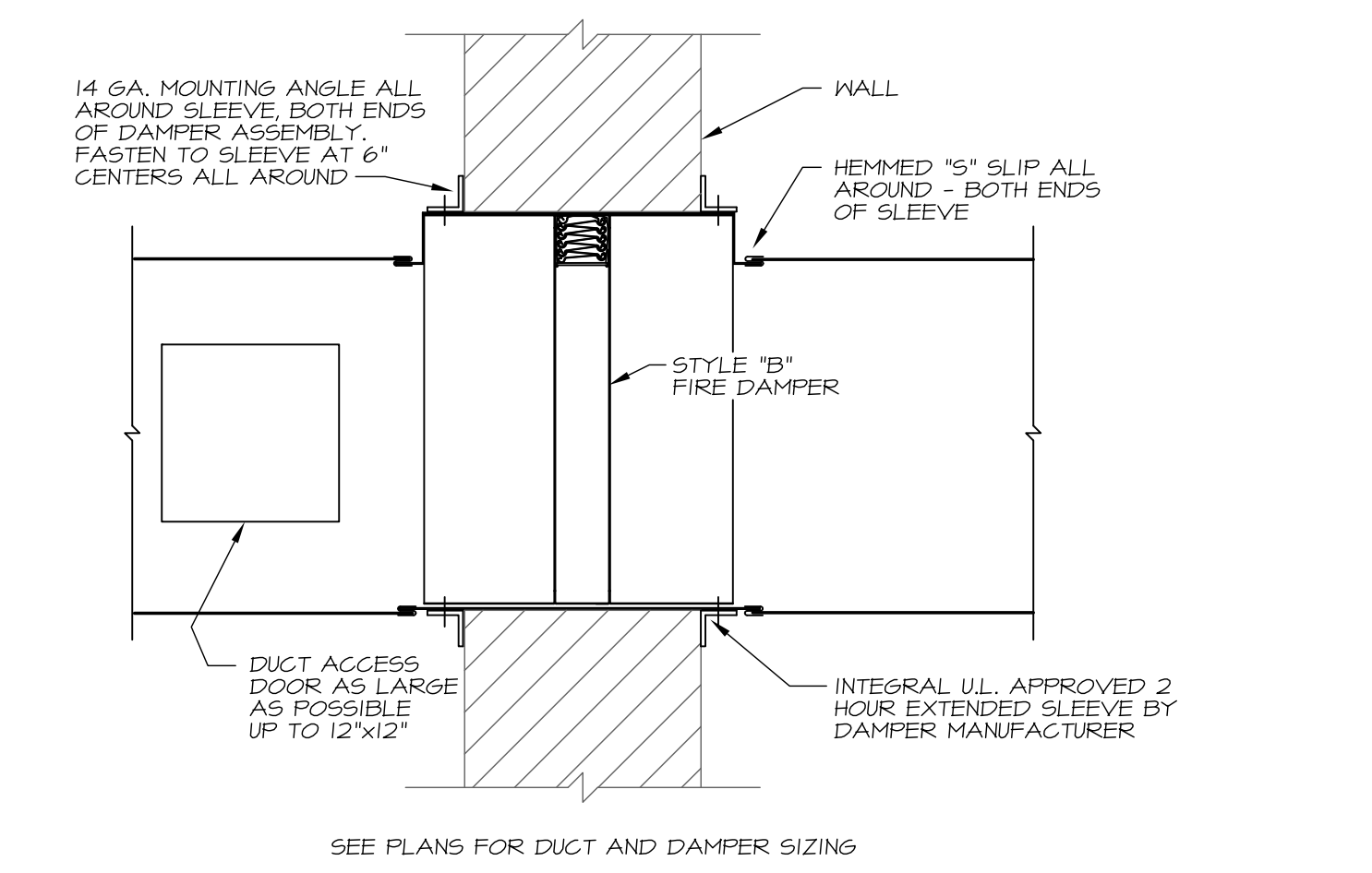
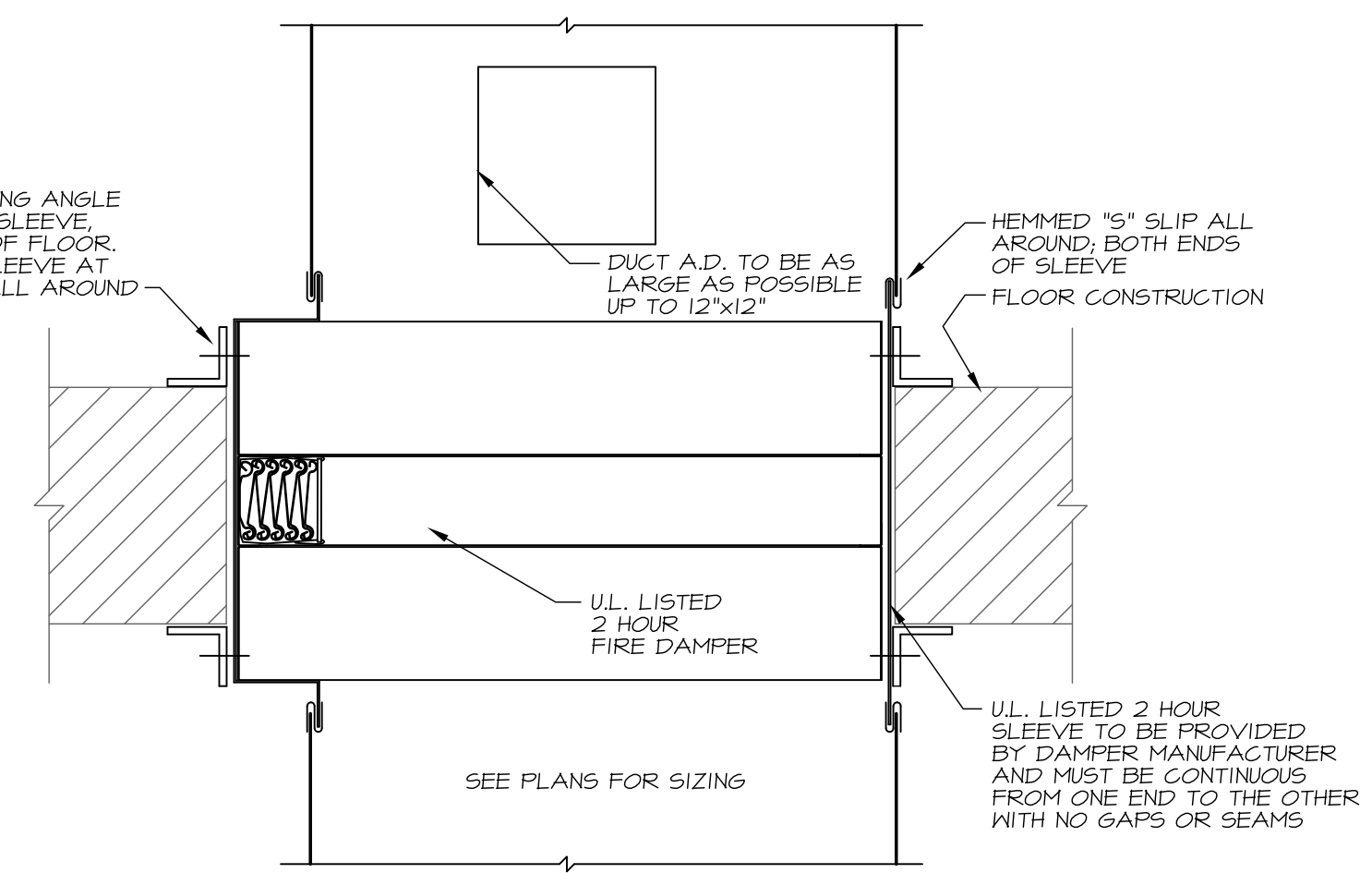
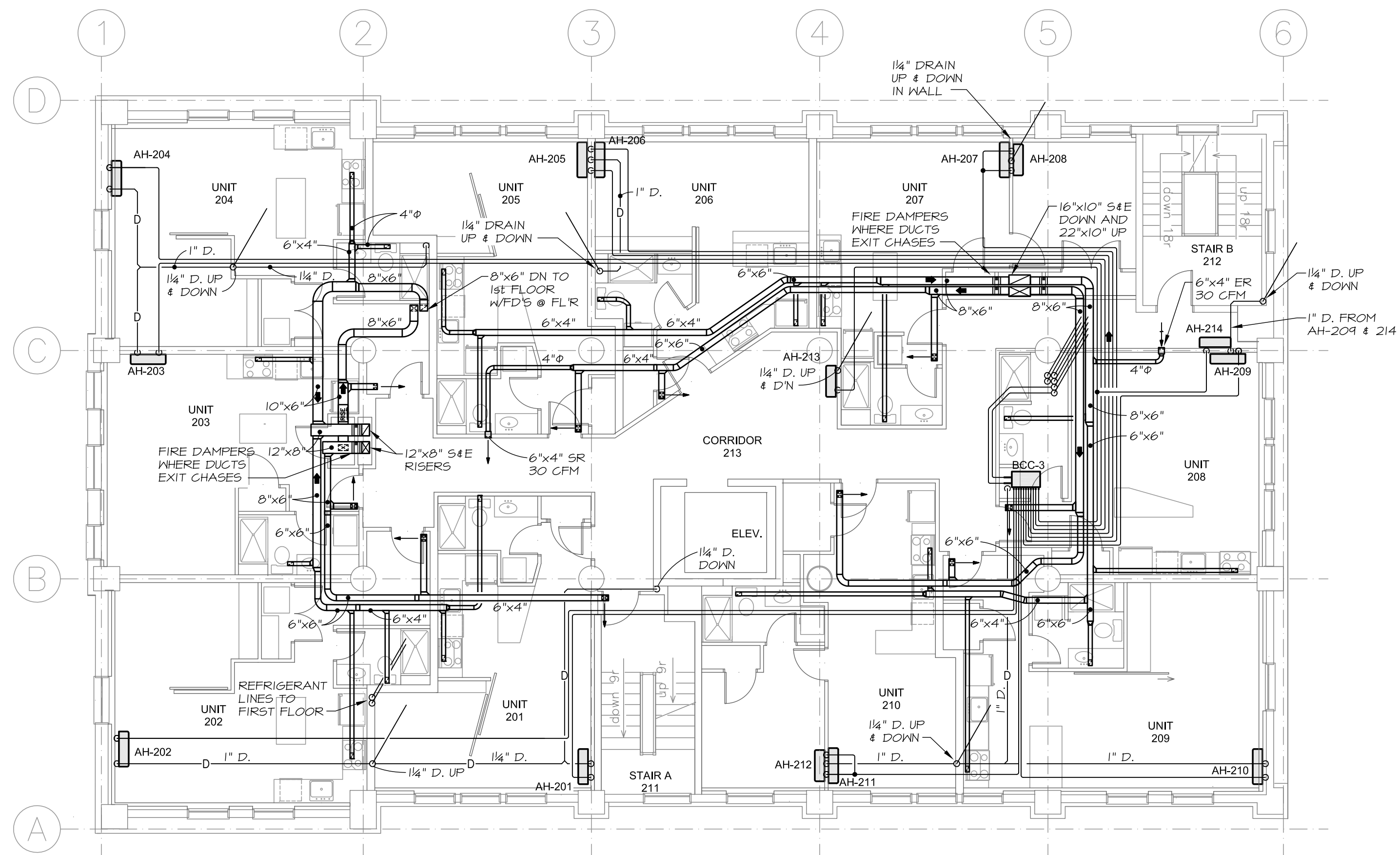
# SYMBOLS AND ABBREVIATIONS

AC	AIR CONDITIONING	HC	HEATING CONTRACTOR	①	THERMOSTAT
AD	ACCESS DOOR	HRU	HEAT RECOVERY UNIT	②	THERMOSTAT WITH GUARD
AFF	ABOVE FINISH FLOOR	IER	INVERTED ECCENTRIC REDUCER	③	MANUAL DAMPER
AH	AIR HANDLER	L	LOUVER	④	FLEXIBLE DUCT
AP	ACCESS PANEL	LAT	LEAVING AIR TEMPERATURE	⑤	LAY-IN DIFFUSER
APD	AIR PRESSURE DROP	LDB	LEAVING DRY BULB	⑥	SURFACE MOUNT DIFFUSER
ATC	AUTOMATIC TEMP. CONTROL	LWB	LEAVING WET BULB	⑦	SUPPLY AIR DUCT
BD	BACKDRAFT DAMPER	MBH	THOUSAND BTU PER HOUR	⑧	RETURN / RELIEF AIR DUCT
CD	CONDENSATE DRAIN	MD	MANUAL DAMPER	⑨	
CFH	CUBIC FEET PER HOUR	MOD	MOTOR OPERATED DAMPER	⑩	
CFM	CUBIC FEET PER MINUTE	NTS	NOT TO SCALE	⑪	
CP	CONDENSATE PUMP	OA	OUTDOOR AIR	⑫	
D	DRAIN	OD	OUTSIDE DIMENSION	⑬	
DIW	DOWN IN WALL	OU	OUTDOOR UNIT	⑭	
DSD	DUCT SMOKE DETECTOR	PC	PLUMBING CONTRACTOR	⑮	
EAT	ENTERING AIR TEMPERATURE	R	RETURN	⑯	
EC	ELECTRICAL CONTRACTOR	RG	RETURN/RELIEF GRILLE	⑰	
EDB	ENTERING DRY BULB	RR	RETURN REGISTER	⑱	
EF	EXHAUST FAN	S	SUPPLY	⑲	
EG	EXHAUST GRILLE	SA	SUPPLY AIR	⑳	
ER	EXHAUST REGISTER	SC	SITE CONTRACTOR	㉑	
ESP	EXTERNAL STATIC PRESSURE	SG	SUPPLY GRILLE	㉒	
EWB	ENTERING WET BULB	SP	STATIC PRESSURE	㉓	
FCV	FLOW CONTROL VALVE	SR	SUPPLY REGISTER	㉔	
FD	FIRE DAMPER	TC	TEMPERATURE CONTROL	㉕	
FO	FUEL OIL	TSP	TOTAL STATIC PRESSURE	㉖	
FOR	FUEL OIL RETURN	T'STAT	THERMOSTAT	㉗	
FOS	FUEL OIL SUPPLY	TV	TURNING VANE	㉘	
FV	FACE VELOCITY	VI	VIBRATION ISOLATOR	㉙	
GC	GENERAL CONTRACTOR	VRF	VARIABLE REFRIGERANT FLOW	㉚	



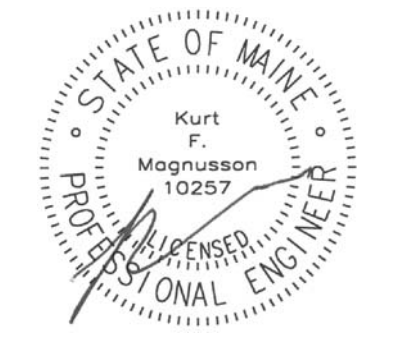
6"x4" DUCT TO EACH INDIVIDUAL SUPPLY REGISTER.  
4" DUCT TO EACH INDIVIDUAL EXHAUST REGISTER  
ALL SUPPLY REGISTERS SERVING LIVING UNITS TO BE 6"x4", 75 CFM  
ALL EXHAUST REGISTERS SERVING LIVING UNITS TO BE 6"x4", 30 CFM IN BATHROOMS & 25 CFM IN KITCHENS.  
FLEXIBLE DUCTWORK IS NOT PERMITTED OTHER THAN FINAL TERMINATIONS AT CLOTHES DRYERS.  
PIPING AND DUCTWORK WILL BE EXPOSED. INSTALLATION & ARRANGEMENTS TO BE AS NEAT & ORGANIZED AS POSSIBLE

PROVIDE A CONDENSATE LIFT PUMP WITH EVERY AIR HANDLER & BCC UNIT. LIFT CONDENSATE AS HIGH AS POSSIBLE THEN DRAIN BY GRAVITY @ 0.10" LF AS SHOWN. DRAIN LINES TO PARALLEL REFRIGERANT LINES AS MUCH AS POSSIBLE.  
DRAINS FROM EACH UNIT TO BE 1" WITH UP TO 2 UNITS ON A 1" LINE. USE 1/2" WHERE MORE THAN TWO UNITS ARE CONNECTED.  
EACH SINGLE REFRIGERANT LINE SHOWN BETWEEN BCC UNITS AND AIR HANDLERS REPRESENTS BOTH LIQUID AND GAS.



project name  
**Schlotterbeck Block**  
117 Preble Street  
Portland, Maine

Schlotterbeck Block LLC  
goduti/thomas architects  
44 oak st.  
portland, maine 04101  
ph. 207-775-3184  
fax 207-774-0486



revisions  
date  
March 15, 2016  
sheet title

2nd and 3rd Floor Mechanical Plans  
sheet title line 3

scale  
Noted  
drawn by  
R.E.M.  
project number  
schlotterbeck  
sheet number



**MECHANICAL SYSTEMS ENGINEERS**  
ROYAL RIVER CENTER, UNIT 108  
10 FOREST FALLS DRIVE, YARMOUTH, MAINE 04096  
(207) 846-1441  
FACEBOOK: MECHANICAL SYSTEMS ENGINEERS  
© COPYRIGHT 2015



**M2**