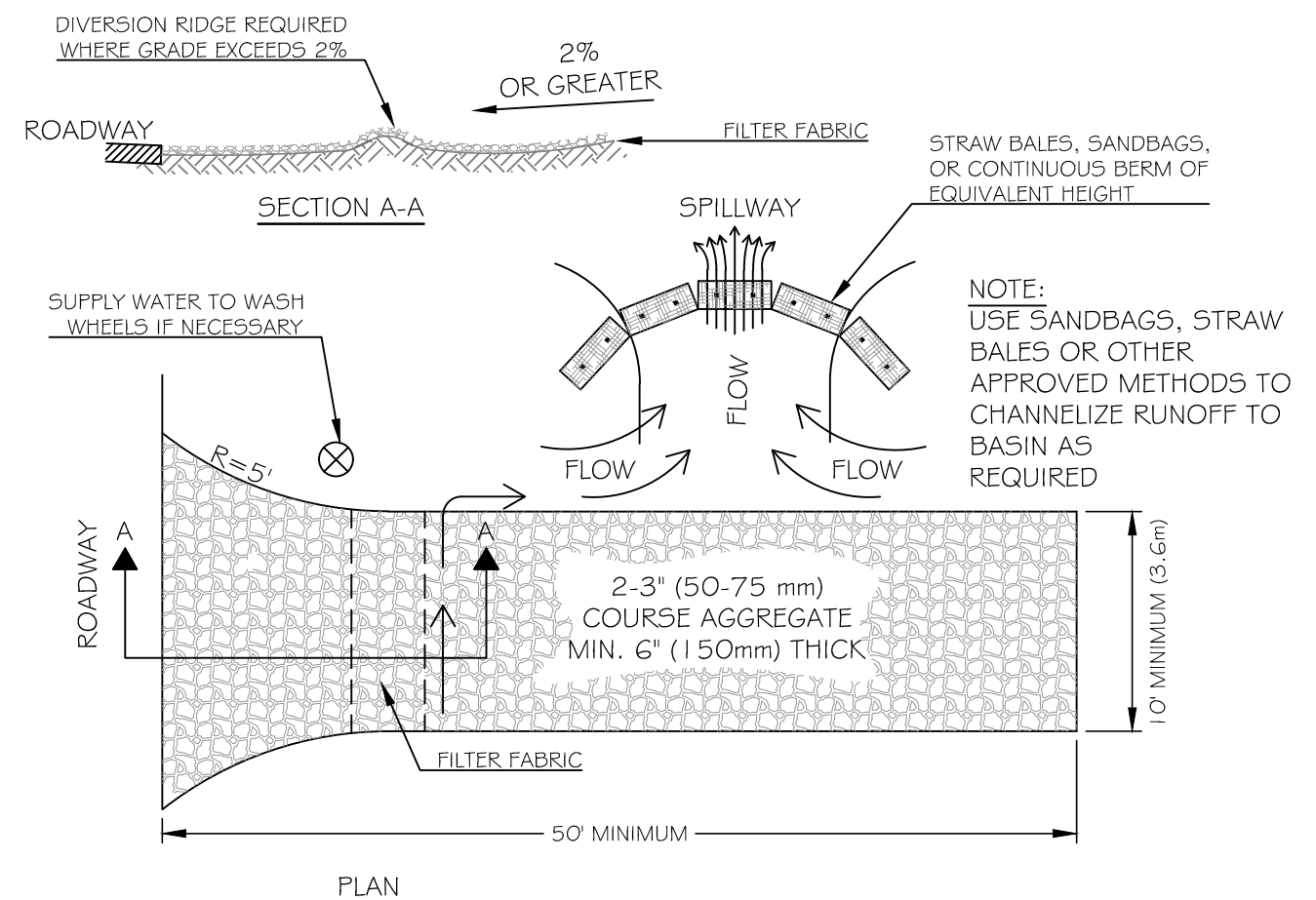
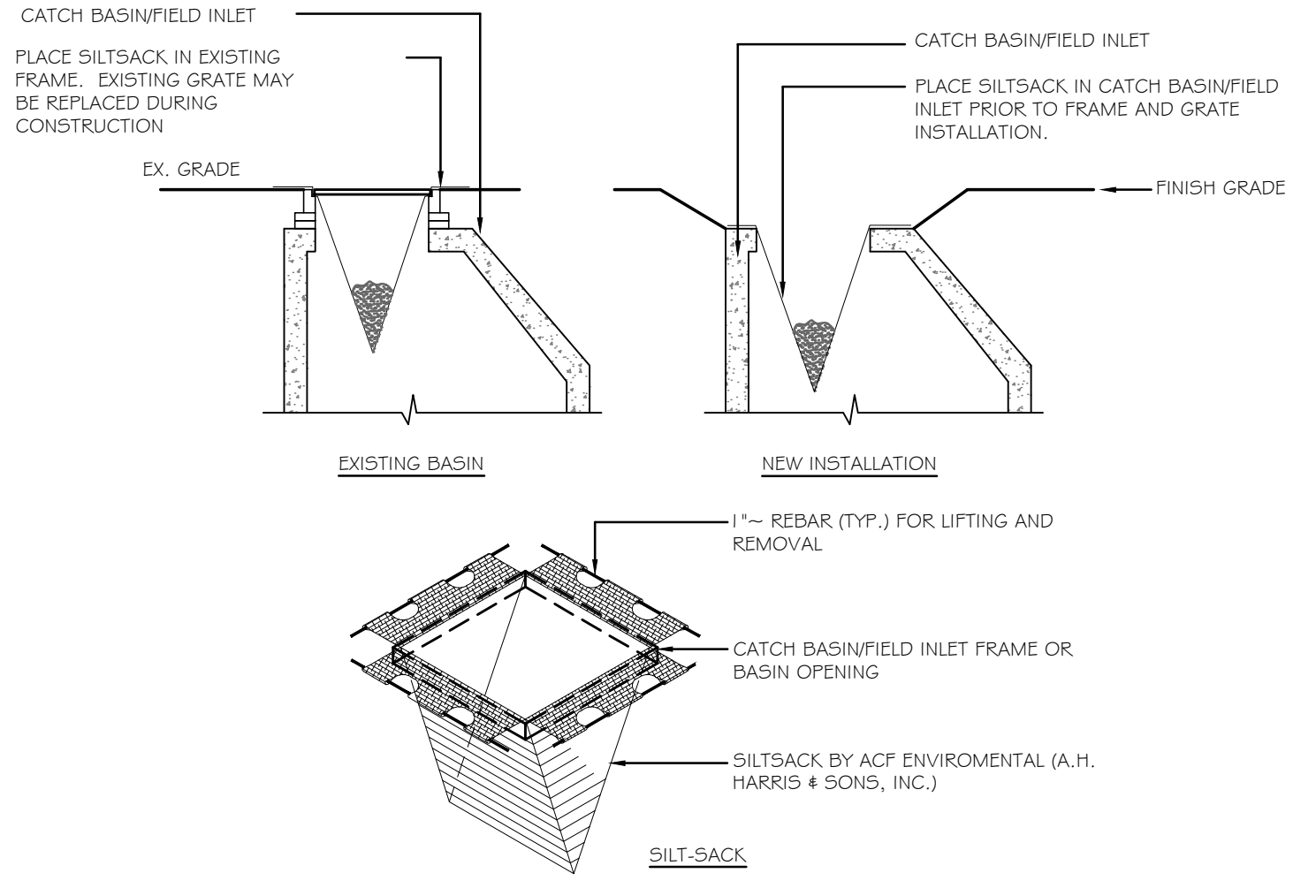


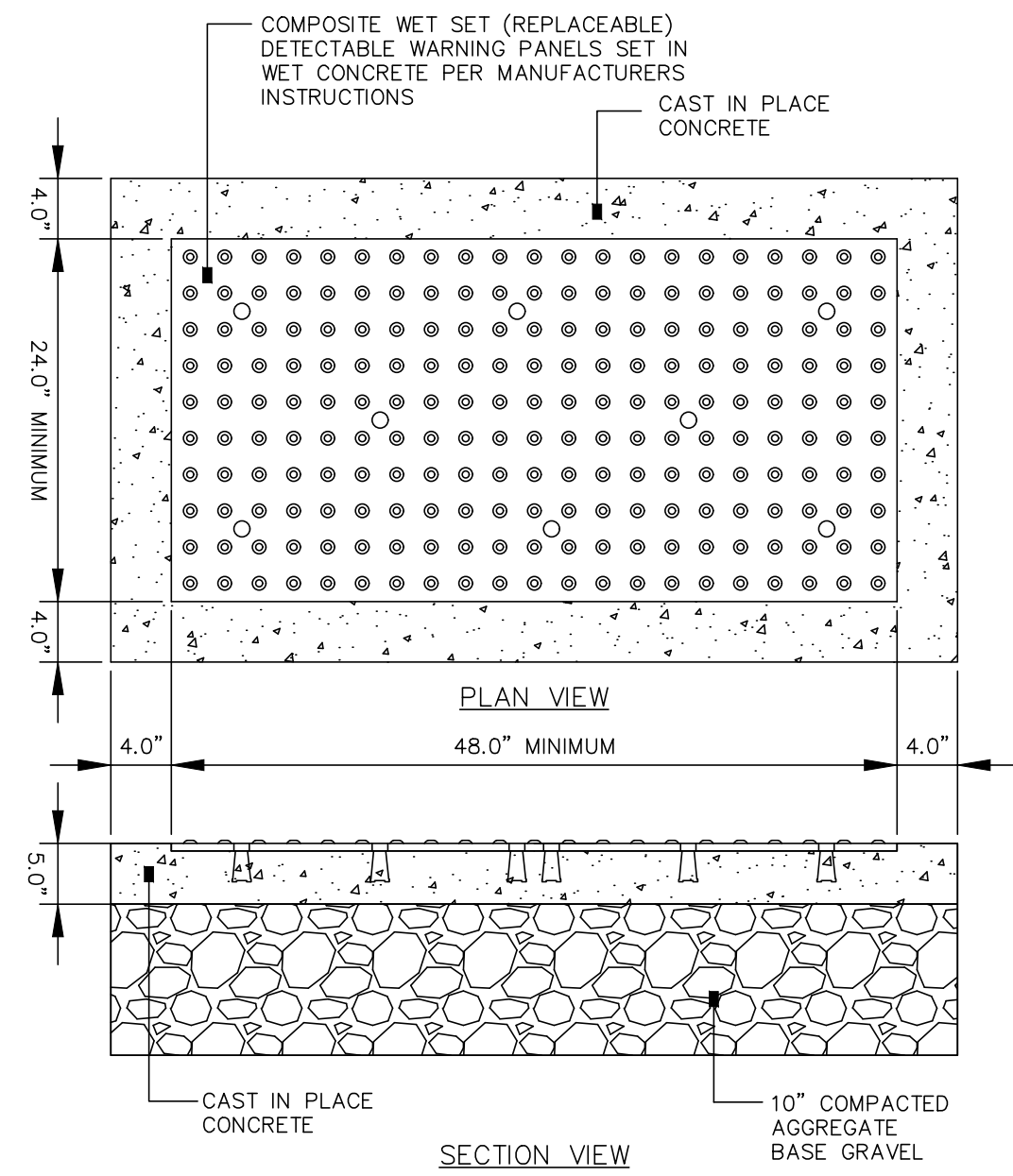
1 PREFABRICATED SILT FENCE
C4.0 NOT TO SCALE



2 STABILIZED CONSTRUCTION ENTRANCE
C4.0 NOT TO SCALE

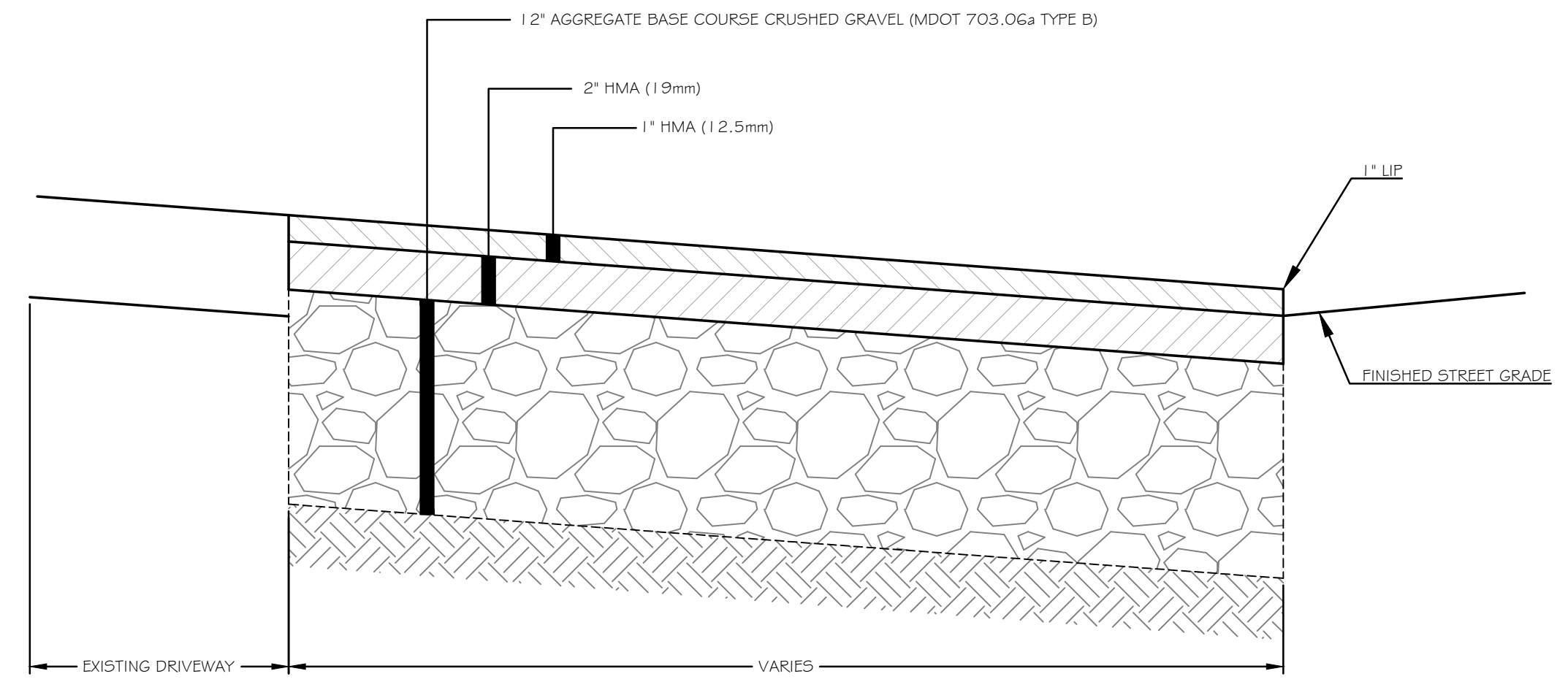


3 CATCH BASIN PROTECTION DETAIL
C4.0 NOT TO SCALE

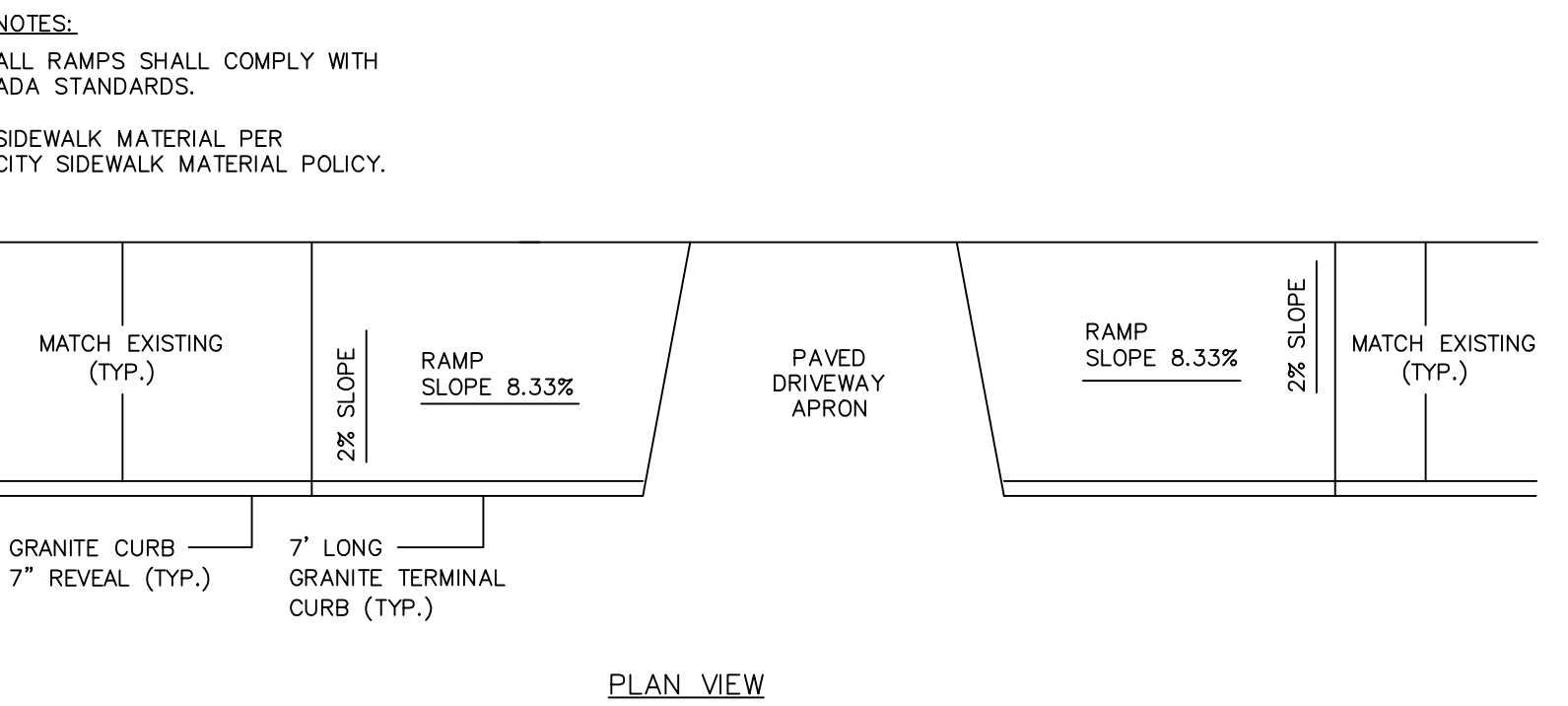


- NOTES:**
- COMPOSITE WET SET (REPLACEABLE) DETECTABLE WARNING PANELS SHALL BE AS MANUFACTURED BY ADA SOLUTIONS, INC. (WWW.ADATILE.COM), OR APPROVED EQUAL.
 - CAST IN PLACE CONCRETE SHALL MEET SPECIFICATIONS FOR MAINE D.O.T. CLASS A STRUCTURAL CONCRETE, MINIMUM COMPRESSIVE STRENGTH 4,000 PSI. THE CONCRETE SHALL BE SEALED PRIOR TO SETTING PANELS. THE EXPOSED CONCRETE BORDER SHALL RECEIVE A GROOVED EDGE BETWEEN THE PANEL AND CONCRETE, ALONG WITH A UNIFORM BROOM FINISH PERPENDICULAR TO THE FLOW OF PEDESTRIAN TRAFFIC.
 - TRUNCATED DOMES SHALL BE ALIGNED IN ROWS, PARALLEL AND PERPENDICULAR TO THE PREDOMINANT DIRECTION OF TRAVEL. TRUNCATED DOME BRICKS AND GRANITE PAVERS ARE NOT ALLOWED.
 - FOR ALL DETECTABLE WARNING PANELS (EXCEPT AS SPECIFIED IN FIGURE 1-7A AND TECHNICAL MANUAL SECTION 1.8.4.), FEDERAL YELLOW COLORED (#33538) PANELS SHALL BE USED. FOLLOW MANUFACTURER'S INSTRUCTIONS FOR INSTALLATION.
 - SIZE: THE DETECTABLE WARNING PANEL(S) SHALL EXTEND 24 INCHES MINIMUM IN THE DIRECTION OF TRAVEL AND THE FULL WIDTH OF THE CURB RAMP, LANDING, OR BLENDED TRANSITION TO THE STREET.
 - ORIENTATION: THE DETECTABLE WARNING PANEL SHALL BE LOCATED SO THAT THE EDGE NEAREST THE CURB LINE IS 6 INCHES MINIMUM AND 8 INCHES MAXIMUM FROM THE CURB LINE. THE PANEL SHALL BE ORIENTED TO THE DIRECTION OF TRAVEL AS IDENTIFIED BY THE POINT OF EGRESS.

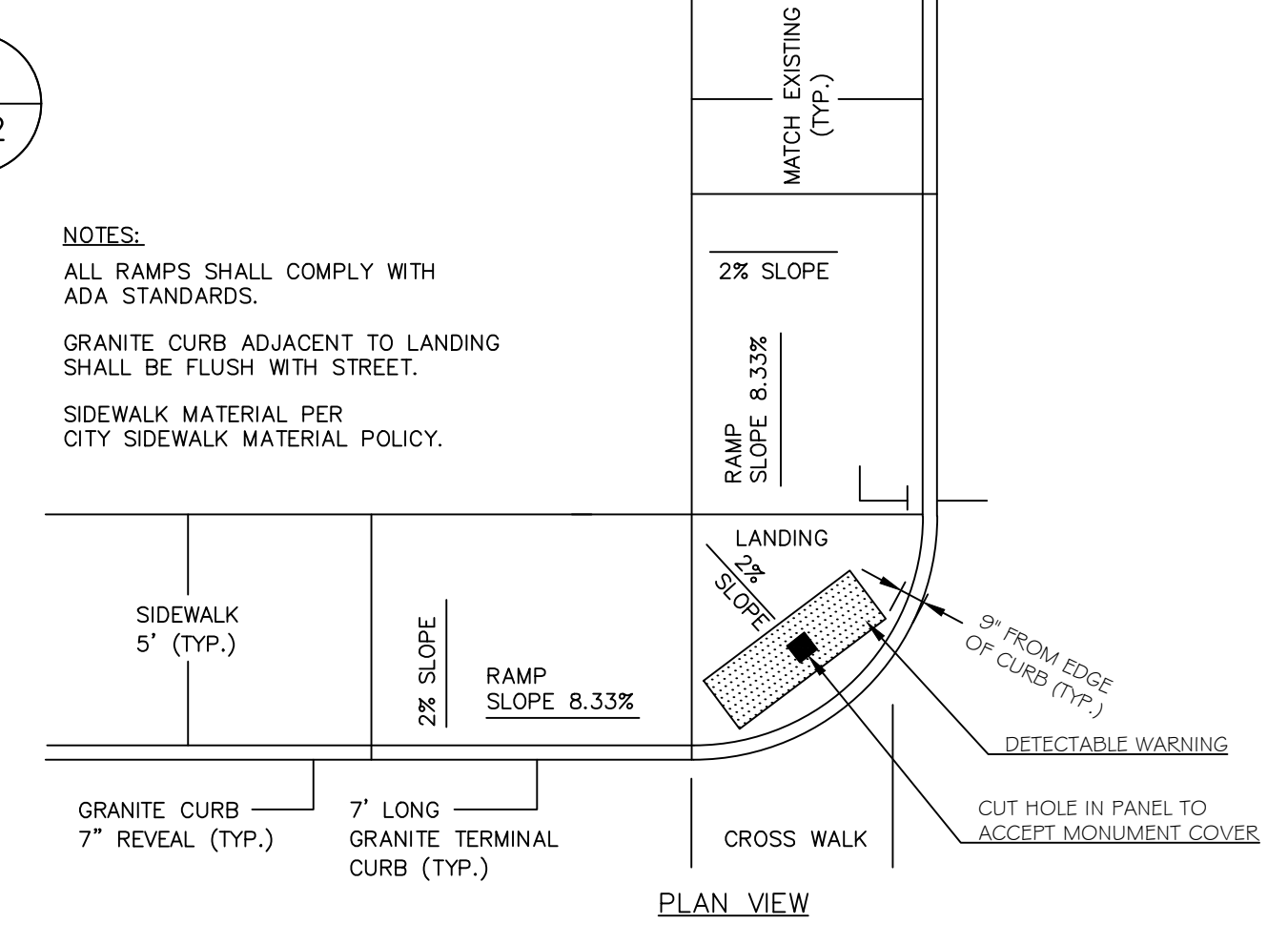
4 SIDEWALK RAMP DETECTABLE WARNING PANEL
C4.0 NOT TO SCALE



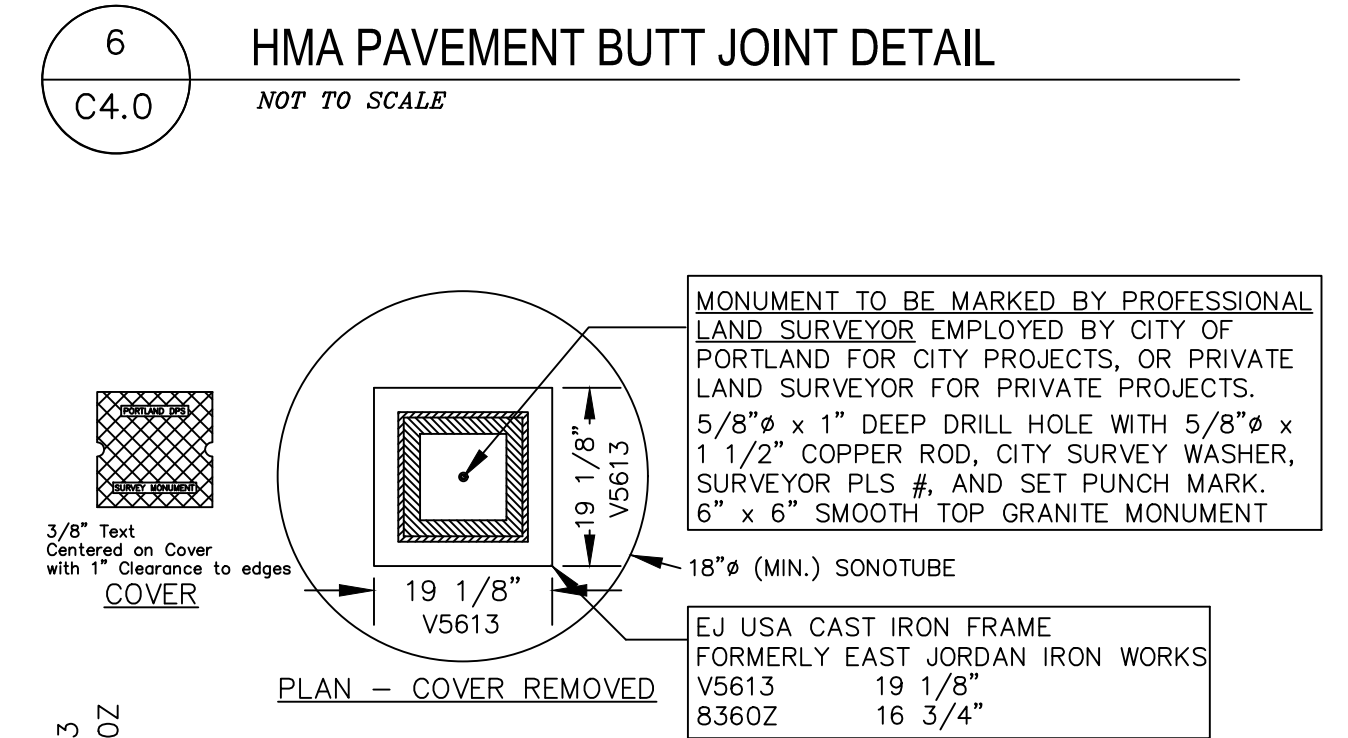
5 BITUMINOUS DRIVEWAY APRON DETAIL
C4.0 NOT TO SCALE



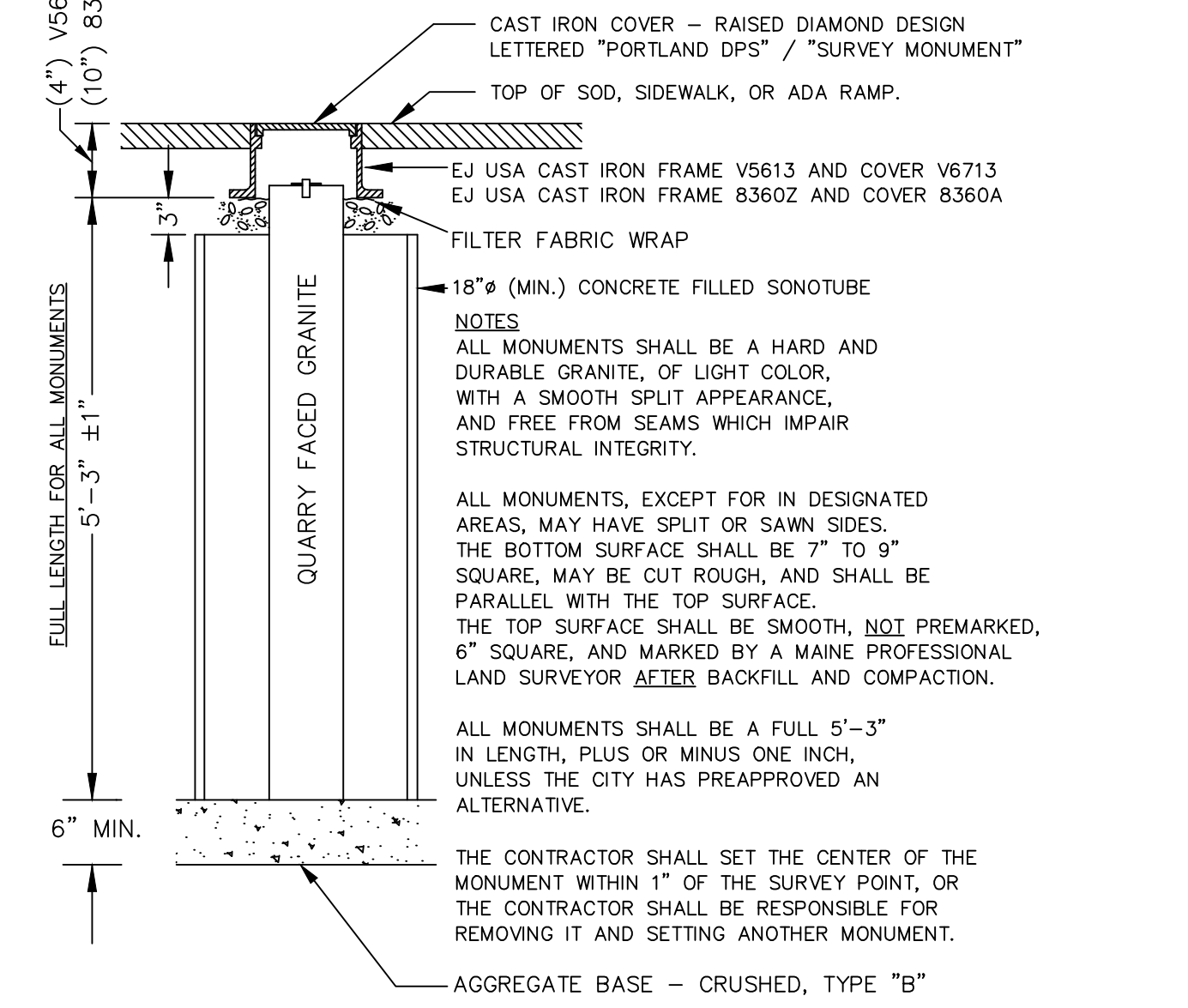
7 CURB RAMP DETAIL AT DRIVEWAY APRON
C4.0 NOT TO SCALE



8 CURB RAMP DETAIL AT CROSSWALK
C4.0 NOT TO SCALE



6 HMA PAVEMENT BUTT JOINT DETAIL
C4.0 NOT TO SCALE



9 GRANITE STREET MONUMENT
C4.0 NOT TO SCALE

ISSUED FOR PERMITTING - NOT FOR CONSTRUCTION

Rev.	Date	Description	Drawn	Check
1	1/8/16	Issued for City Site Plan Application	SWC	NGC

Sheet Title:
Details

Job No.:	317	Sheet No.:	
Date:	Jan. 18, 2016	Scale:	N.T.S.
Drawn:	SWC	Checked:	WFR

C4.0

DATE: 01/18/2016 11:24:44 AM PROJECT: Salvation Army - Portland, ME - Kitchen & Dining Hall Addition - 1510000011000000