

H Heat Detector - replace

P Pull Station - new

▶ Horn/Strobe - new

M
M Monitor Module - new

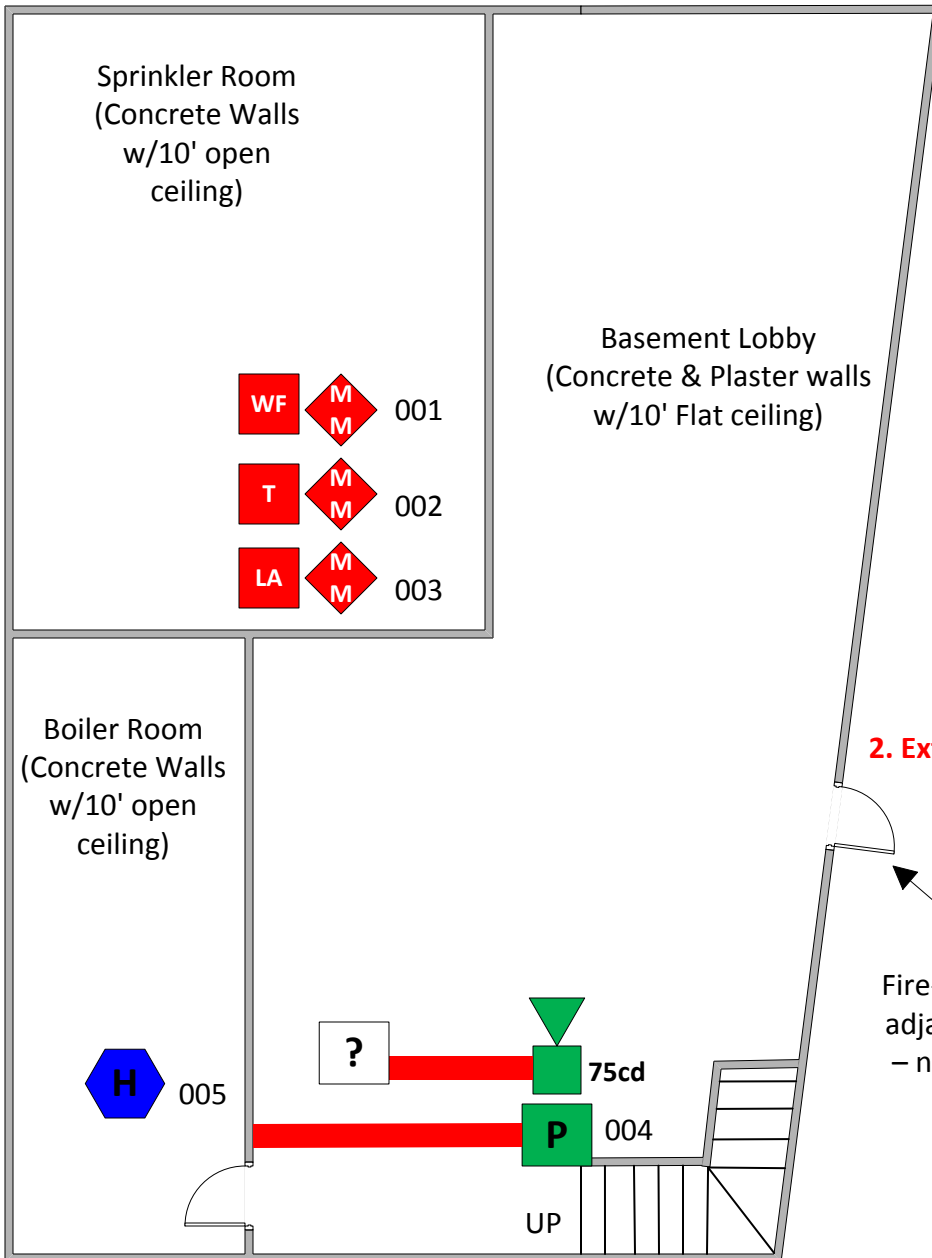
WF Waterflow

T Tamper

LA Low Air

Salvation Army Basement

Preble Street



NOTES:
1. Add pull to SLC.
2. Extend NAC to basement.

Fire-Rated door to adjacent building. – not a means of egress

Eric Colby, Certified Engineering Technician, Level 3		Rev 0
NICET Cert. # 116800		5-1-2014
20 Thomas Drive Westbrook ME 04092		

