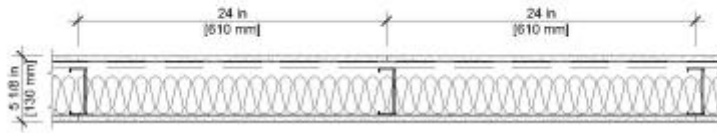




[Home](#) > [System Selector](#) > [UL U419](#)

Fire Rated System Design - UL U419



[CAD](#) · [REVIT](#)

UL U419

Interior Partitions - Steel Stud (Non-load-bearing)

Fire Rating

1 hour

STC / Sound Test

50 dB

Sound Test: RAL-TL87-156

System Thickness

5-1/8"

Detail Description

- **Gypsum Board** - 1/2 in. thick gypsum board applied horizontally or vertically
- **Resilient Channel** -25 ga. furring channels installed horizontally spaced 24 in. OC
- **Steel Studs** -3-5/8 in. deep, 25 ga. spaced max. 24 in. OC
- **Batts and Blankets** -Min. 3 in. thick mineral wool batt insulation
- **Gypsum Board** -1/2 in. thick gypsum board applied horizontally or vertically

United States Gypsum Company : 550 W. Adams, Chicago, IL. 60661 : www.usgdesignstudio.com

Reference URL: <http://www.usgdesignstudio.com/assembly.asp?id=920563&assemblyCategory=921052>