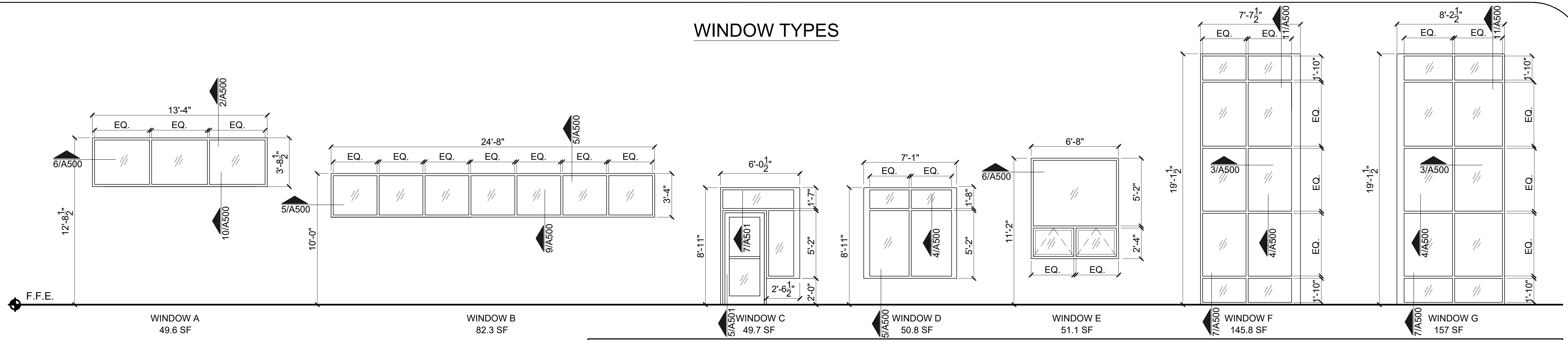
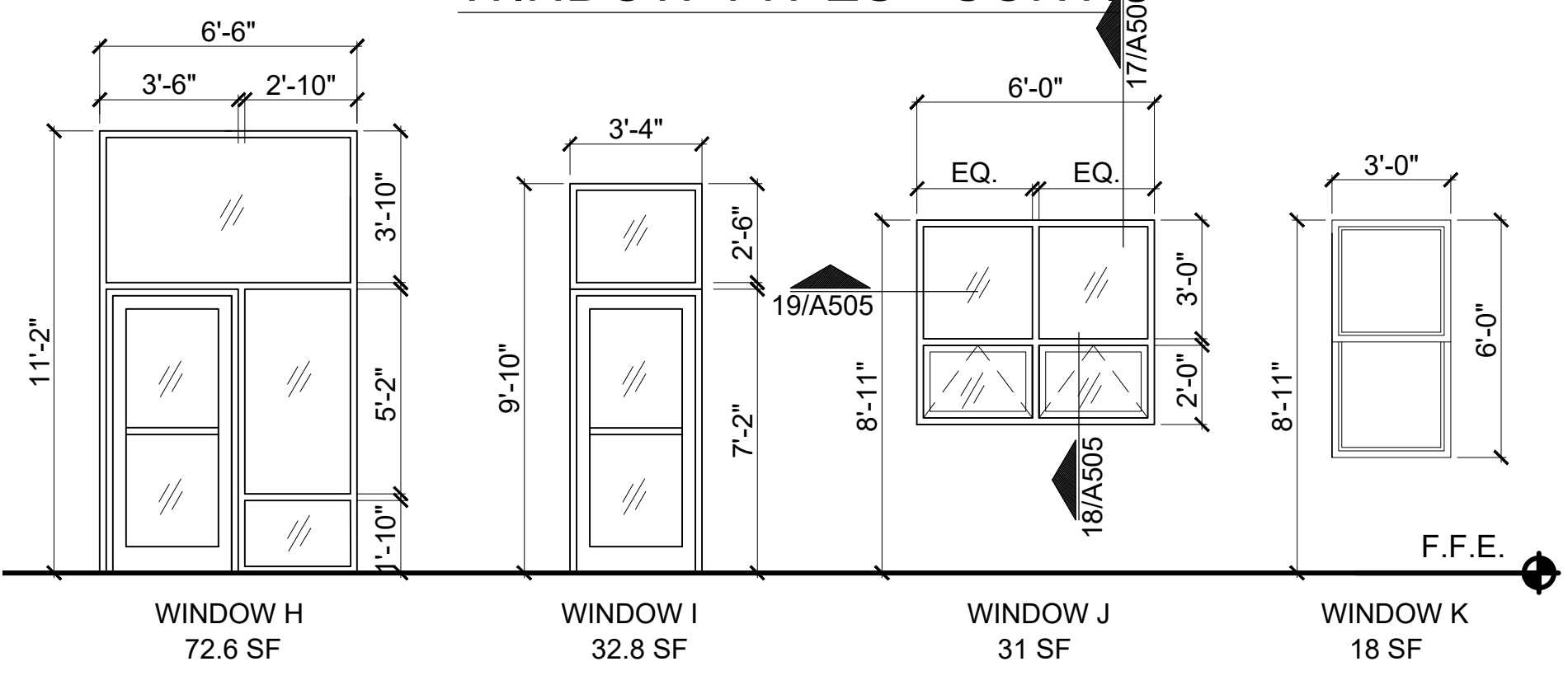


WINDOW TYPES



WINDOW TYPES - CONT



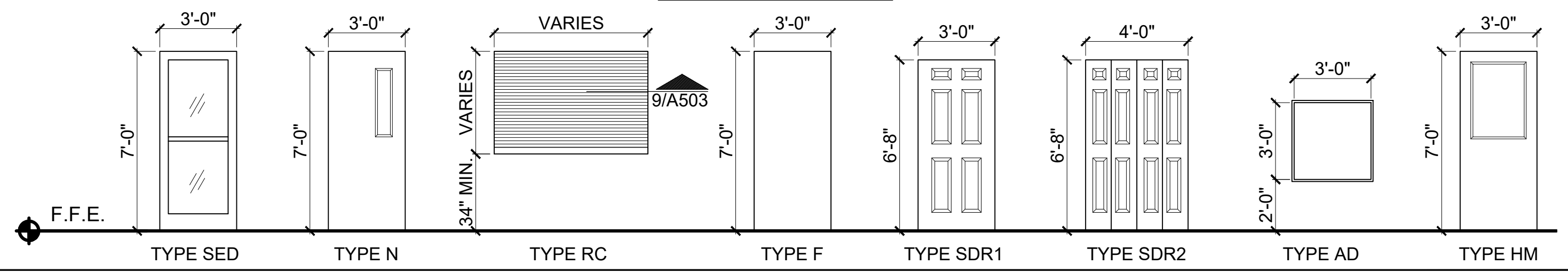
WINDOW SCHEDULE														
TYPE	SIZE	MATERIAL	OPERATION	FINISH	GLAZING	SHGC	MIN U-FACTOR	HARDWARE FINISH	HEAD DETAIL	JAMB DETAIL	SILL DETAIL	MANUFACTURER	SERIES	NOTES
A	13'-4" X 3'-8 1/2"	ALUMINUM	FIXED	ANODIZED	DOUBLE PANE, LOW-E, ARGON FILLED	0.4	0.45	N/A	2/A500	6/A500	10/A500	KAWNEER	TRIFAB 451T	3
B	24'-8" X 3'-4"	ALUMINUM	FIXED	ANODIZED	DOUBLE PANE, LOW-E, ARGON FILLED	0.4	0.45	N/A	1/A500	5/A500	9/A500	KAWNEER	TRIFAB 451T	3, 4
C	6'-0 1/2" X 8'-9"	ALUMINUM	FIXED/STOREFRONT	ANODIZED	DOUBLE PANE, LOW-E, ARGON FILLED	0.4	0.45	N/A	13/A500	16/A500	14/A500	KAWNEER	TRIFAB 451T	1, 2, 3
D	7'-1" X 6'-11"	ALUMINUM	FIXED	ANODIZED	DOUBLE PANE, LOW-E, ARGON FILLED	0.4	0.45	N/A	13/A500	6/A500	14/A500	KAWNEER	TRIFAB 451T	3
E	6'-8" X 7'-8"	ALUMINUM	FIXED/AWNING	ANODIZED	DOUBLE PANE, LOW-E, ARGON FILLED	0.4	0.45	CAST WHITE BRONZE	2/A500	6/A500	10/A500	KAWNEER	TRIFAB 451T	3, 6, 8
F	7'-7 1/2" X 19'-1 1/2"	ALUMINUM	CURTAIN WALL	ANODIZED	DOUBLE PANE, LOW-E, ARGON FILLED	0.4	0.45	N/A	11/A500	6/A500	7/A500	KAWNEER	1600 SYSTEM 1	2, 3, 7, 9
G	8'-2 1/2" X 19'-1 1/2"	ALUMINUM	CURTAIN WALL	ANODIZED	DOUBLE PANE, LOW-E, ARGON FILLED	0.4	0.45	N/A	11/A500	6/A500	7/A500	KAWNEER	1600 SYSTEM 1	2, 3, 7, 9
H	6'-6" X 11'-2"	ALUMINUM	FIXED/STOREFRONT	ANODIZED	DOUBLE PANE, LOW-E, ARGON FILLED	0.4	0.45	N/A	2/A500	6/A500	5/A501, 7/A500	KAWNEER	TRIFAB 451T	1, 2, 3
I	3'-4" X 9'-10"	ALUMINUM	FIXED/STOREFRONT	ANODIZED	DOUBLE PANE, LOW-E, ARGON FILLED	0.4	0.45	N/A	2/A500	6/A500	5/A501	KAWNEER	TRIFAB 451T	1, 3
J	6'-0" X 5'-2"	ALUMINUM	FIXED/AWNING	ANODIZED	DOUBLE PANE, LOW-E, ARGON FILLED	0.4	0.45	CAST WHITE BRONZE	17/A505	19/A505	18/A505	KAWNEER	TRIFAB 451T	3, 4, 5, 6, 8
K	3'-0" X 6'-0"	-	-	-	-	-	-	-	-	-	-	-	-	10, 11

NOTES:
 1. PROVIDE W/ KAWNEER AA425, 3'-0" X 7'-0" STOREFRONT ENTRY DOOR.
 2. TEMPERED SAFETY GLAZING WITHIN 18" OF FINISHED FLOOR.
 3. WINDOW TO BE THERMALLY BROKEN.
 4. SEE STRUCTURAL FOR LITEL SIZING.
 5. COORDINATE FINAL WINDOW SIZING WITH EXISTING BRICKWORK SIZING AND COURSING.
 6. PROVIDE KAWNEER GLASSVENT AWNING WINDOWS.
 7. PROVIDE INTERNAL STEEL REINFORCING PER MANUFACTURER'S REQUIREMENTS.
 8. PROVIDE OPERABLE ROLLER WINDOW SHADES.
 9. COORDINATE HEIGHT OF CURTAINWALL WITH FINAL HEIGHT OF PARAPET.
 10. EXISTING WINDOW TO REMAIN.
 11. PROVIDE NEW HORIZONTAL MINI-BLIND WINDOW TREATMENT.

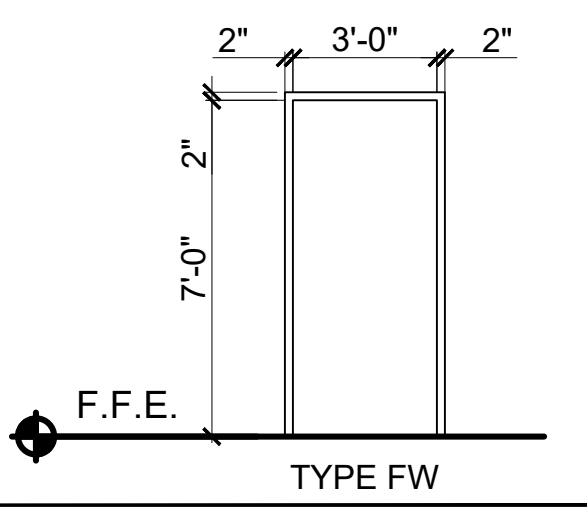
DOOR SCHEDULE														
NO.	LOCATION	DOOR			TYPE	MAT'L	FINISH	FIRE RATING	FRAME			MANUFACTURER	MODEL	NOTES
		W	H	THK					TYPE	MAT'L	FINISH			
100	DINING HALL	36	84	1-3/4	N	SOLID CORE	HPL	20 MIN	FW	HM	FACTORY FINISH	MOHAWK	FLUSH FIRE DOOR	
101	STAIR	36	84	1-3/4	N	SOLID CORE	HPL	90 MIN	FW	HM	FACTORY FINISH	MOHAWK	FLUSH FIRE DOOR	
102	DINING HALL	36	84	1-3/4	F	SOLID CORE	HPL	-	FW	HM	FACTORY FINISH	MARLITE	FLUSH HPL	
103	DINING HALL	96	36	1/2	RC	STAINLESS STEEL	FACTORY FINISH	-	N/A	STEEL	N/A	OVERHEAD DOOR COMPANY	651	
104	DINING HALL	72	36	1/2	RC	STAINLESS STEEL	FACTORY FINISH	-	N/A	STEEL	N/A	OVERHEAD DOOR COMPANY	651	
105	DINING HALL	36	84	1-3/4	N	SOLID CORE	HPL	-	FW	HM	FACTORY FINISH	MARLITE	FLUSH HPL	
106	DINING HALL	36	84	2-1/4	SED	INSULATED ALUM	FACTORY FINISH	-	STOREFRONT	ALUM	FACTORY FINISH	KAWNEER	AA425	1
107	VESTIBULE	36	84	2-1/4	SED	INSULATED ALUM	FACTORY FINISH	-	STOREFRONT	ALUM	FACTORY FINISH	KAWNEER	AA425	1
108	DINING HALL	36	84	2-1/4	SED	INSULATED ALUM	FACTORY FINISH	-	STOREFRONT	ALUM	FACTORY FINISH	KAWNEER	AA425	1
109	DINING HALL	48	36	1/2	RC	STAINLESS STEEL	FACTORY FINISH	-	N/A	STEEL	N/A	OVERHEAD DOOR COMPANY	651	
110	DINING HALL	36	84	1-3/4	HM	INSULATED ALUM	FACTORY FINISH	-	STOREFRONT	ALUM	FACTORY FINISH	KAWNEER	FLUSHLINE, AA425	1
111	KITCHEN	36	84	1-3/4	N	SOLID CORE	HPL	-	FW	HM	FACTORY FINISH	MARLITE	FLUSH HPL	
112	KITCHEN	36	84	1-3/4	F	SOLID CORE	HPL	-	FW	HM	FACTORY FINISH	MARLITE	FLUSH HPL	
113	DINING HALL	36	36	14 GAGE	AD	STEEL	FACTORY FINISH	-	-	STEEL	FACTORY FINISH	KARP	DSC-214M	
201	CORRIDOR	36	84	1-3/4	N	SOLID CORE	HPL	-	FW	HM	FACTORY FINISH	MARLITE	FLUSH HPL	
202	CORRIDOR	36	84	1-3/4	F	SOLID CORE	HPL	20 MIN	FW	HM	FACTORY FINISH	MARLITE	FLUSH HPL	
203	APARTMENT ENTRY	48	80	1-3/4	SDR2	SOLID CORE	STAINED	-	BI-FOLD	WOOD	STAINED	MASONITE	MOLDED PANEL	
204	APARTMENT DINING	36	80	1-3/4	SDR1	SOLID CORE	STAINED	-	PRE-HUNG	WOOD	STAINED	MASONITE	MOLDED PANEL	
205	APARTMENT DINING	36	80	1-3/4	SDR1	SOLID CORE	STAINED	-	PRE-HUNG	WOOD	STAINED	MASONITE	MOLDED PANEL	
206	APARTMENT MASTER BEDROOM	48	80	1-3/4	SDR2	SOLID CORE	STAINED	-	BI-FOLD	WOOD	STAINED	MASONITE	MOLDED PANEL	
207	APARTMENT MASTER BEDROOM	36	80	1-3/4	SDR1	SOLID CORE	STAINED	-	PRE-HUNG	WOOD	STAINED	MASONITE	MOLDED PANEL	
208	APARTMENT LIVING ROOM	36	80	1-3/4	SDR1	SOLID CORE	STAINED	-	PRE-HUNG	WOOD	STAINED	MASONITE	MOLDED PANEL	
209	APARTMENT BEDROOM#1	48	80	1-3/4	SDR2	SOLID CORE	STAINED	-	BI-FOLD	WOOD	STAINED	MASONITE	MOLDED PANEL	
210	CORRIDOR	36	84	1-3/4	F	SOLID CORE	HPL	20 MIN	FW	HM	FACTORY FINISH	MARLITE	FLUSH HPL	
211	SECOND FLOOR CORRIDOR	36	84	1-3/4	N	SOLID CORE	HPL	60 MIN	FW	HM	FACTORY FINISH	MOHAWK	FLUSH FIRE DOOR	
212	EGRESS STAIR	36	84	1-3/4	N	SOLID CORE	HPL	60 MIN	FW	HM	FACTORY FINISH	MOHAWK	FLUSH FIRE DOOR	
213	LOUNGE	36	36	14 GAGE	AD	STEEL	FACTORY FINISH	-	-	STEEL	FACTORY FINISH	KARP	DSC-214M	2
301	THIRD FLOOR CORRIDOR	36	84	1-3/4	N	SOLID CORE	HPL	60 MIN	FW	HM	FACTORY FINISH	MOHAWK	FLUSH FIRE DOOR	

NOTES:
 1. REFER TO WINDOW SCHEDULE FOR ADDITIONAL STOREFRONT ENTRY DOOR INFORMATION.
 2. ACCESS PANEL TO BE MOUNTED IN GYPSUM BOARD CEILING. COORDINATE FINAL LOCATION WITH ERV LOCATION ABOVE.

DOOR TYPES



FRAME TYPE



ISSUE DATE: 10/25/16
 SHEET SCALE: 1/4" = 1'-0"

CONSTRUCTION DOCUMENTS

PROJECT NO. 15031
 PROJECT NAME: SALVATION ARMY ARC PORTLAND, ME

REVISIONS: 1 11/29/2016
 2 -
 3 -
 4 -
 5 -

DRAWN BY: AEW
 SHEET TITLE: WINDOW & DOOR SCHEDULES

10/25/16
 1/4" = 1'-0"

A

600

10/25/16
 EVAN A. CARROLL
 No. 3887
 STATE OF MAINE

10/25/16
 EVAN A. CARROLL
 No. 3887
 STATE OF MAINE

10/25/16
 EVAN A. CARROLL
 No. 3887
 STATE OF MAINE

10/25/16
 EVAN A. CARROLL
 No. 3887
 STATE OF MAINE

10/25/16
 EVAN A. CARROLL
 No. 3887
 STATE OF MAINE

10/25/16
 EVAN A. CARROLL
 No. 3887
 STATE OF MAINE

Bild Architecture
 PO Box 8235
 Portland, ME 04104
 207.408.0168
 evan@bildarchitecture.com

licensed architect
 EVAN A. CARROLL
 No. 3887
 STATE OF MAINE

PROJECT NO. 15031
PROJECT NAME: SALVATION ARMY ARC PORTLAND, ME

CONSTRUCTION DOCUMENTS
WINDOW & DOOR SCHEDULES

A
600