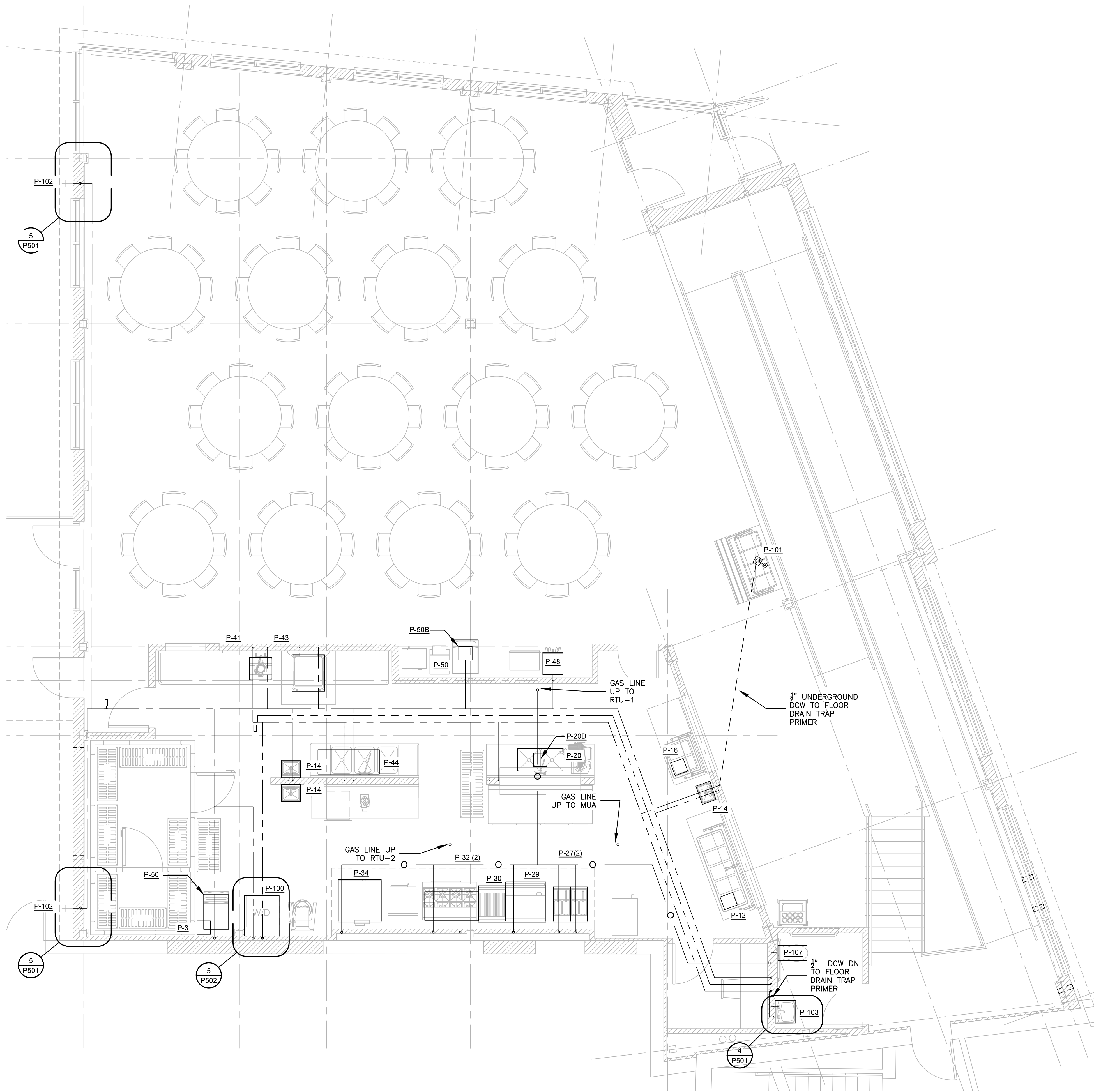
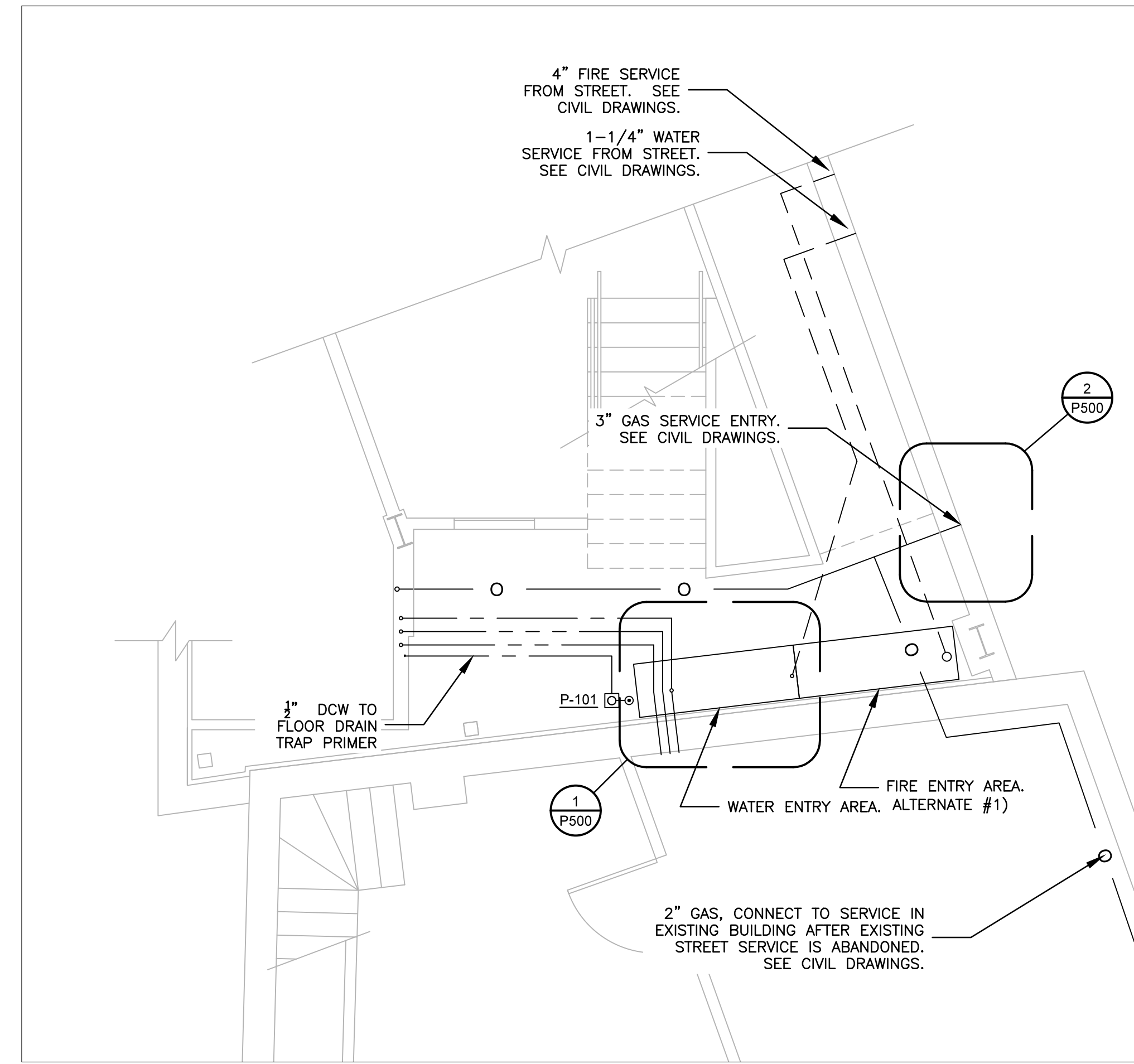


COPYRIGHT: Reuse or reproduction of the contents of this document is not permitted without written permission of Ripcord Engineering, Inc.



1 DINING HALL PLUMBING PIPING PLAN
1/8" = 1'-0"



2 DINING HALL UNDER RAMP PLUMBING PIPING PLAN
1/8" = 1'-0"

GENERAL NOTES

1. SEE DRAWING P400 FOR PLUMBING AND GAS PIPING RISER DIAGRAMS.
2. PLUMBING CONTRACTOR TO INSTALL VACUUM BREAKER, SOLENOID VALVE, AND FLOW CONTROL VALVE (FURNISHED) IN COLD WATER LINE TO DISPOSER.
3. KITCHEN EQUIPMENT CONTRACTOR TO PROVIDE GAS REGULATING VALVES OR ALL GAS OPERATED KITCHEN EQUIPMENT.
4. PLUMBING CONTRACTOR TO INSTALL GAS REGULATORS ON ALL GAS EQUIPMENT.
5. PLUMBING CONTRACTOR TO INSTALL ALL DRAINS AND FAUCETS SUPPLIED BY THE KITCHEN EQUIPMENT CONTRACTOR.
6. PLUMBING CONTRACTOR TO FURNISH AND INSTALL ALL INDIRECT DRAIN INTERPIPING TO FLOOR DRAINS.
7. GENERAL CONTRACTOR TO PROVIDE ALL REQUIRED SLEEVES THROUGH BUILDING FOR REMOTE REFRIGERATION LINES.

REVISIONS

| | |
|---|---|
| 1 | : |
| 2 | : |
| 3 | : |
| 4 | : |
| 5 | : |