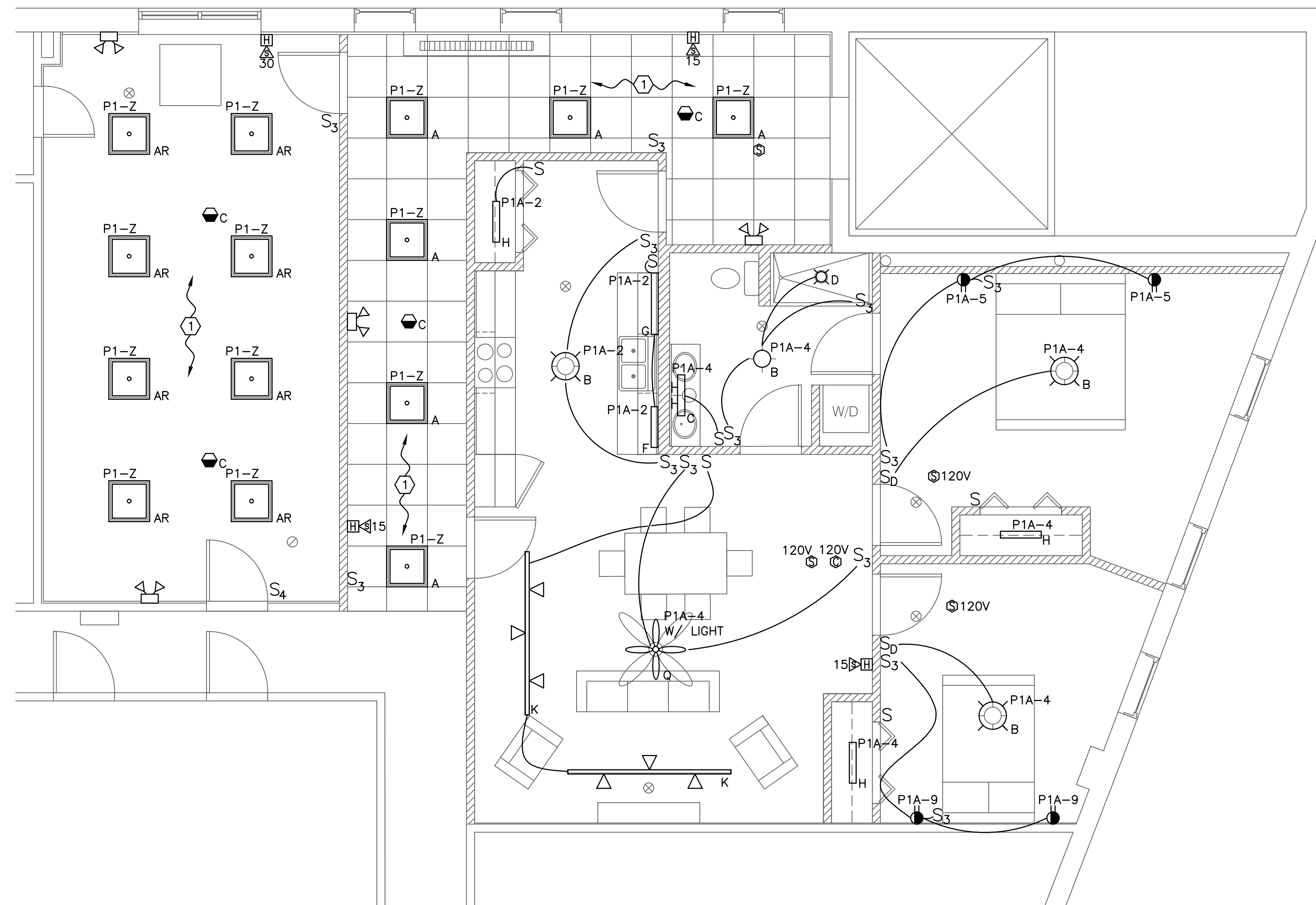


COPYRIGHT: Reuse or reproduction of the contents of this document is not permitted without written permission of Bild Architecture LLC

LIGHTING SCHEDULE					
TYPE	DESCRIPTION	MANUFACTURER	LAMPS	MOUNTING	NOTES
A	2' X 2' LED TROFFER 120V	LITHONIA LIGHTING	19.6W LED 3500K 2088 LUMENS	CEILING GRID	MODEL #: 2GTL-2-20L-EZ1-LP835
A2	2' X 2' LED TROFFER 120V	LITHONIA LIGHTING	35.4W LED 3500K 3453 LUMENS	CEILING GRID	MODEL #: 2GTL-2-33L-EZ1-LP835
AR	2' X 2' LED TROFFER 120V	LITHONIA LIGHTING	19.6W LED 3500K 2088 LUMENS	CEILING RECESSED	MODEL #: 2GTL-2-20L-EZ1-LP835 ORDER ACCESSORY DGA22 DRYWALL GRID ADAPTER
B	14" BEDROOM CEILING FIXTURE WITH TRIAC DIMMING. 120V	LITHONIA LIGHTING	22.6W LED 3500K 1379 LUMENS	CEILING SURFACE	MODEL #: FMLACL-14
C	BATHROOM VANITY FIXTURE. BRUSHED NICKEL FINISH. 120V	GEORGE KOVACS LIGHTING	(2) 60W LED EQUIVALENT E26 BASE	WALL SURFACE	MODEL #: P5042-084
D	6" LED SHOWER LIGHT. WET LOCATION. 120V	LITHONIA LIGHTING	11W LED 3500K 1000 LUMENS	CEILING RECESSED	MODEL #: REAL6-D6-MW-ESL-1000L-35K-.60SC-LC6LED-T24
F	22" LED UNDERCABINET FIXTURE WHITE FINISH. 120V	JUNO LIGHTING	8.1W LED 3000K 454 LUMENS	UNDER CABINET	MODEL #: UPLED22-NS-WH
G	30" LED UNDERCABINET FIXTURE WHITE FINISH. 120V	JUNO LIGHTING	10.7W LED 3000K 601 LUMENS	UNDER CABINET	MODEL #: UPLED30-NS-WH
H	24" LED CLOSET FIXTURE. 120V	LITHONIA LIGHTING	17W LED 4000K 1225 LUMENS	WALL SURFACE	MODEL #: FMMCL-24-840
J	16" CEILING PENDANT. SILVER GRAY WITH TRANSPARENT ACRYLIC SHADE. 120V	SLV LIGHTING	17W LED 3000K 2000 LUMENS	CEILING PENDANT	MODEL #: 7165222U
K	8 FOOT TRACK LIGHTING. 3 LED FIXTURES. WHITE FINISH. 120V	DIRECT LIGHTING	(3) 10W LED 3000K 700 LUMENS	CEILING SURFACE	MODEL #: 50014-8 (8 FOOT TRACK) LAMP: (3) #60088 LED TRACK LIGHT CANOPY: #50090 FLOATING FEED CANOPY FOR POWER FEED
L	LED WALL SCONCE. GUNMETAL GRAY METALLIC FINISH. 120V	V2 LIGHTING GROUP	26W LED 3500K 1300 LUMENS UP 1300 LUMENS DN	WALL SURFACE	MODEL #: C2LU-D-N-D-13-83-35-40-13-83-35-40
M	6" LED RECESSED FIXTURE WITH PEWTER TRIM. 120V	LITHONIA LIGHTING	18W LED 3500K 1089 LUMENS	CEILING RECESSED	MODEL #: LDN6-35/10-L06PR-120
N	8' LED LINEAR PENDANT. INDIRECT LIGHTING. WHITE FINISH. 120V	PEERLESS LIGHTING	60W LED 3500K 6036 LUMENS	CEILING PENDANT	MODEL #: 7CRM7L-L0-8FT-R8-120-SCT-EZB-LP835-F1/24-C210
P	14" SERVING LINE PENDANT WITH RED REFLECTOR SHADE. 120V	BASELITE LIGHTING	20W LED	CEILING PENDANT	MODEL #: CU14-43-LED-CORD. CORD MOUNT WITH 1/2" OR 3/4" TAPPED HUB. LED MODEL HAS REMOTE BALLAST/DRIVER.
Q	52" CEILING FAN WITH LIGHT. WHITE FINISH. 120V	HUNTER FAN	100W LED EQUIVALENT A26 BASE	CEILING SURFACE	MODEL #: 59073
R	4' LED LENSED STRIPLIGHT. WHITE FINISH. 120V	LITHONIA LIGHTING	33W LED 3500K 3000 LUMENS	CEILING SURFACE	MODEL #: ZL1N-L48-3000LM-FST-MVOLT-35K-80CRI-WH
C	CEILING MOUNTED DUAL TECHNOLOGY ULTRASONIC AND PASSIVE INFRARED OCCUPANCY SENSOR 120V	HUBBELL	N/A	CEILING SURFACE	MODEL #: OMNIDT500 FURNISH RELAYS/POWER PACKS AS REQUIRED FOR A COMPLETE AND OPERABLE INSTALLATION
W	WALL MOUNT PASSIVE INFRARED OCCUPANCY SENSOR 120V	HUBBELL	N/A	WALL	MODEL #: LHIRS11
W2	WALL MOUNT PASSIVE INFRARED OCCUPANCY SENSOR WITH DUAL RELAY 120V	HUBBELL	N/A	WALL	MODEL #: LHIRD-2IV
E	EMERGENCY BATTERY UNIT 120V	DUAL-LITE	2W LED	WALL SURFACE	MODEL #: EV4D-02L
WP	WEATHER PROOF REMOTE HEAD. WHITE FINISH. 120V	DUAL-LITE	(2) 1W LED	WALL SURFACE	MODEL #: EVO-D-W
E	LED EXIT SIGN EMERGENCY BATTERY UNIT COMBINATION WITH REMOTE CAPACITY 120V	DUAL-LITE	(2) 1W LED	CEILING SURFACE	MODEL #: EVCU-R-W-D4

1 LIGHTING SCHEDULE



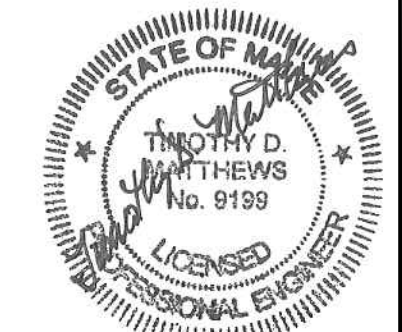
2 ELECTRICAL LIGHTING & FIRE ALARM PLAN - APARTMENT  
SCALE: 1/4" = 1'

**NOTES:**

1. SEE E.O. FOR LEGEND, ABBREVIATIONS AND GENERAL NOTES.

**KEYED NOTES:**

① CONNECT LIGHTING CIRCUIT TO NEW 1-POLE 20 AMP BREAKER IN EXISTING PANEL P1. FURNISH NEW TO MATCH MANUFACTURER PART NUMBER AND KAIC RATING AS IN PANEL. MARK BREAKER "CORRIDOR AND COMMON ROOM LIGHTS." LOAD IS 0.3 KVA.



**SWIFTCURRENT**  
Engineering Services  
10 Forest Falls Dr. Unit 4B  
Yarmouth, ME 04096  
Tel: (207) 847-9280

**Bild Architecture**  
PO Box 8235  
Portland, ME  
04104  
207.408.0168  
evan@bildarchitecture.com



PROJECT NO.  
**15031**  
PROJECT NAME  
**SALVATION ARMY ARC  
PORTLAND, ME**

REVISIONS	1	2	3	4	5

DRAWN BY **CONSTRUCTION DOCUMENTS**  
JMD  
SHEET TITLE  
**LIGHTING & FIRE ALARM PLAN -  
COMMUNITY ROOM & APARTMENT**

ISSUE DATE  
**10/25/16**  
SHEET SCALE

**E**  
**E201**