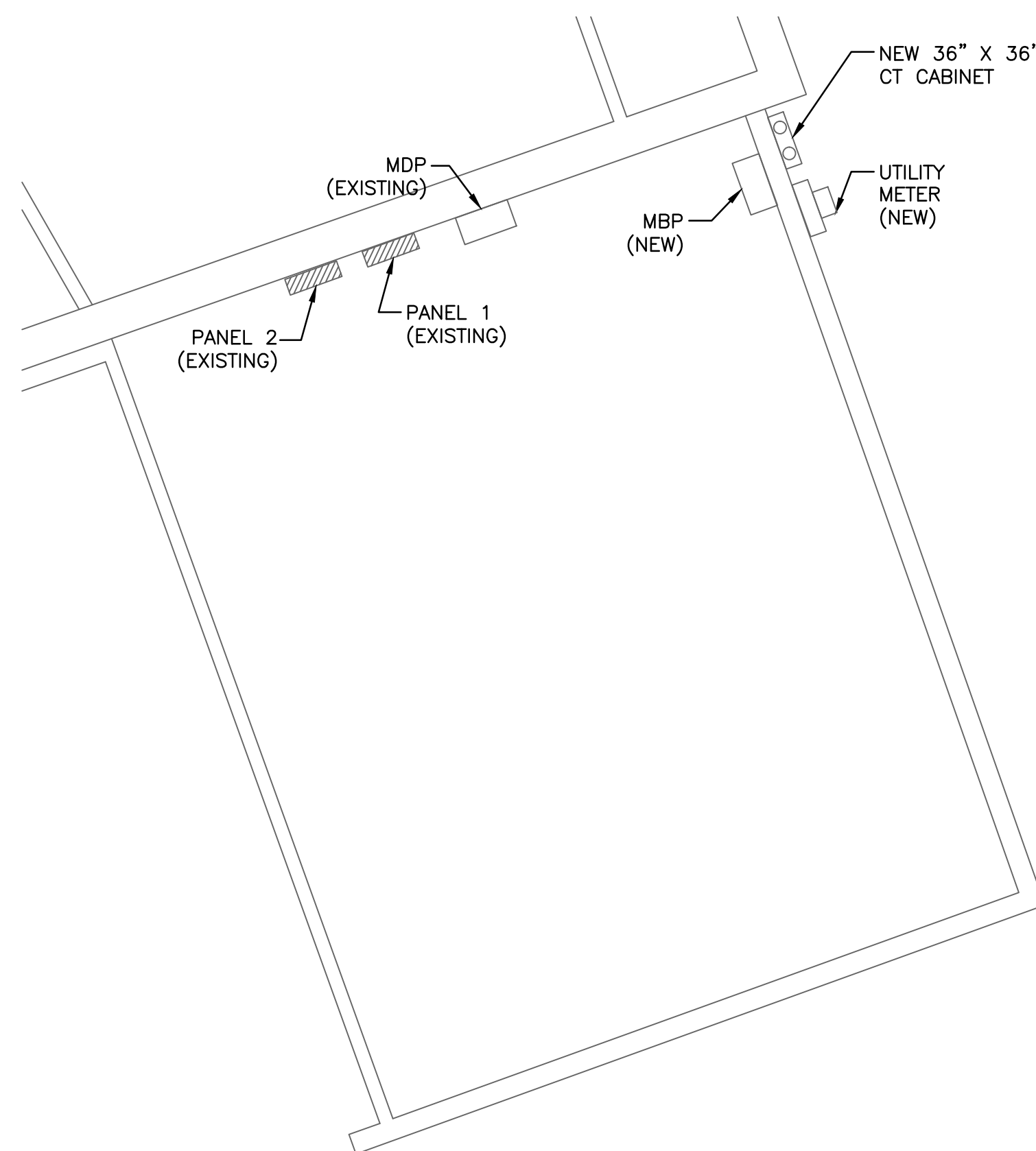


COPYRIGHT: Reuse or reproduction of the contents of this document is not permitted without written permission of Bild Architecture LLC

DIRECTORY	KVA LOAD			CKT #	BKR AMPS	PHASE	BKR AMPS	CKT #	KVA LOAD			DIRECTORY			
	A	B	C						A	B	C				
WALK IN COOLER	1.8			1	20	A	20	2	0.7			EQUIP STAND REFRIG BASE			
COOLER EVAPORATOR	0.2			3	15	B	40	4		3.3		STEAMER			
		0.2		5		6			3.3						
COOLER COMPRESSOR	1.0			7	15	A	20	8	3.3			CONVECTION OVEN			
		1.0		9		10			0.7						
WALK-IN FREEZER			1.8	11	20	C	20	12			0.7	CONVECTION OVEN			
FREEZER EVAPORATOR	0.7			13	15	A	20	14	1.0			EXHAUST HOOD			
		0.7		15		B		20	16		0.8		SALAD BAR		
FREEZER EVAPORATOR			0.5	17	20	C		18			0.4				
FREEZER COMPRESSOR	1.5			19	20	A	15	20	0.4			DISPOSER			
		1.5		21		B		20	22		0.4				
MIXER 40-QT			0.8	23	15	C	60	24			5.5	DISHWASHER W/ BOOSTER HEATER			
	0.8			25		A		20	26	5.5					
		0.8		27		B		20	28		5.5				
HOT FOOD WELLS			2.1	29	30	C	20	30			0.2	MILK DISPENSER			
				31		A		20	32	3.0					
COLD FOOD WELLS		0.9		33	20	B		34		3.0		COFFEE BREWER			
SLICER			0.7	35	20	C	20	36			0.3	BEVERAGE DISPENSER			
REFRIGERATOR WORK TOP	1.5			37	20	A	20	38	1.7			ICE MACHINE			
FOOD PROCESSOR		0.8		39	20	B		40		1.9		CONVEYOR TOASTER			
EQUIP STAND FREEZER BASE			0.7	41	20	C		42			1.9				
KITCHEN LTS	*			43	20	A	20	44	1.4			COUNTERTOP RECEPITS			
DINING HALL LTS		*		45	20	B	20	46		1.7		ICE MACHINE			
DOOR STRIKE			0.4	47	20	C	20	48			0.8	KITCHEN RECEPIT			
DINING ROOM LTS	0.8			49	20	A	20	50	1.7			HEATED/HOLDING CABINET			
SERVING LINE, CORRIDOR, & KITCHEN LTS		1.1		51	20	B	20	52	1.4			COUNTER TOP RECEPITS			
EXTERIOR LIGHT			0.1	53	20	C	20	54			2.0	MICROWAVE OVEN			
SUBTOTAL	10.2	7.0	7.2						18.7	18.7	15.1	SUBTOTAL			
VOLTAGE: 208Y/120V PHASE: 3 POLES: 4				TOTAL KVA A-PHASE				28.9				PANEL		KP	
MAIN BREAKER: 200A				BUS AMPS: 200A				TOTAL KVA B-PHASE				25.7			
MOUNTING: RECESSED				TOTAL KVA C-PHASE				22.3				LOCATION		KITCHEN OFFICE	
SHORT CIRCUIT RATING: 10KAIC				TOTAL KVA				76.9							
NOTES:															

1 PANEL SCHEDULE
SCALE: NOT TO SCALE

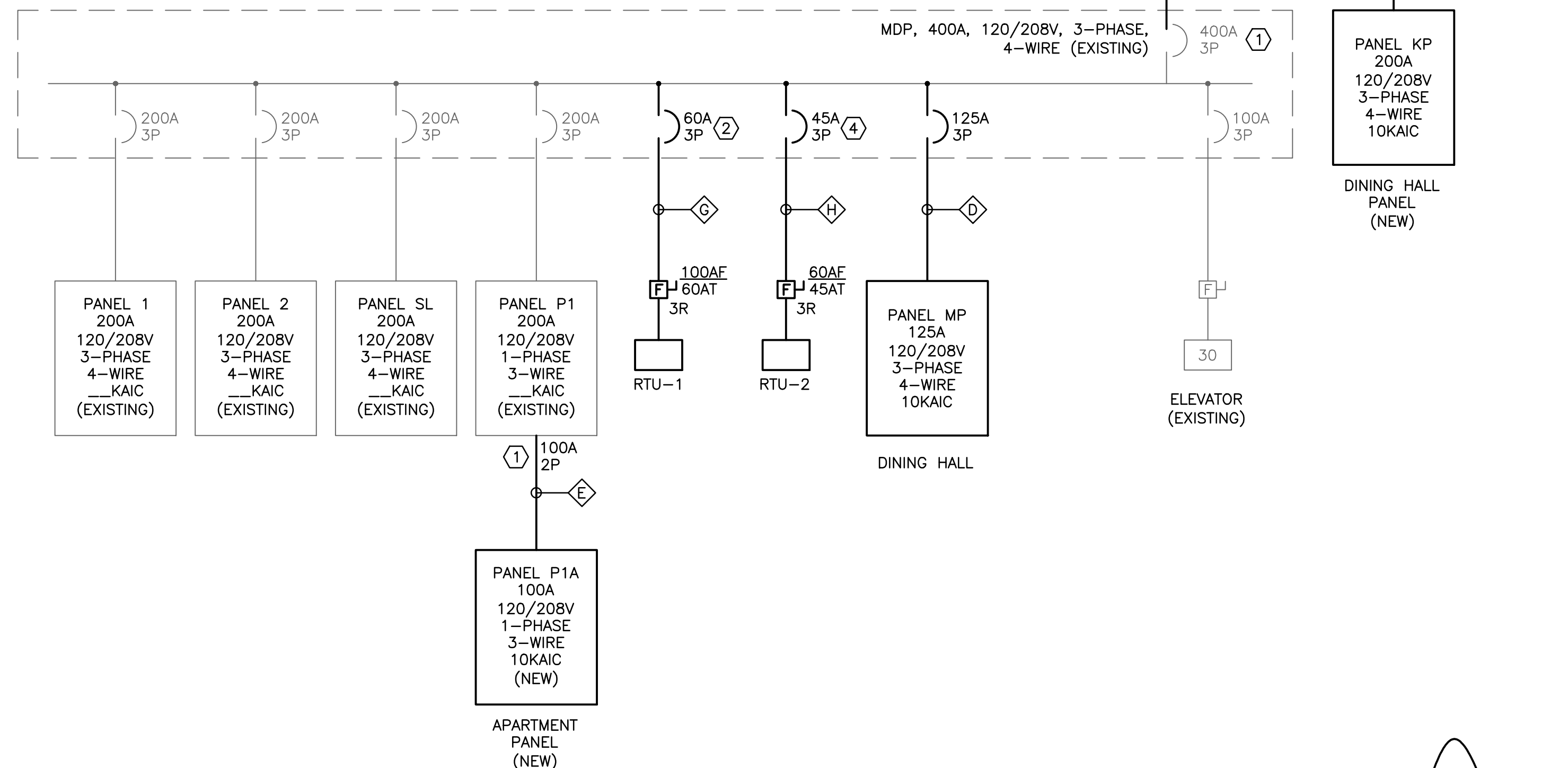


2 ELECTRICAL ROOM
SCALE: 1/4" = 1'

DIRECTORY	KVA LOAD			CKT #	BKR AMPS	PHASE	BKR AMPS	CKT #	KVA LOAD			DIRECTORY			
	A	B	C						A	B	C				
SPARE	*			1	20	A		2	0.5			EF-2 (3/4 HP)			
SPARE		*		3	20	B	15 (ST)	4		0.5					
SPARE			*	5	20	C		6			0.5				
EF-1 (3HP)	1.3			7	20 (ST)	A	15 (ST)	8	0.9			MUA-1 (2HP)			
		1.3		9		B		10		0.9					
			1.3	11		C		12			0.9				
ROOFTOP RECEPITS	0.4			13	20	A	30	14	3.0			STACKABLE WASHER/DRYER			
SPARE		*		15	20	B		16		3.0					
BATH RECEPIT			0.2	17	20	C		18			0.3				
OFFICE RECEPITS	0.6			19	20	A	15	20	0.3			EF-3 (1/4HP)			
EXTERIOR RECEPITS		0.4		21	20	B		22		0.3					
RECEPTACLE FOR DEHUMIDIFIER (FUTURE)			0.8	23	20	C	20	24			1.5	HAND DRYER			
EH-1 KITCHEN HOOD CONTROL CIRCUIT	1.0			25	20	A	20	26	0.4			EXTERIOR BUILDING SIGNAGE			
EH-2 KITCHEN HOOD CONTROL CIRCUIT		1.0		27	20	B	20	28		0.8		RAMP RECEPTACLES			
VIDEO SURVEILLANCE QUAD RECEPTACLE			1.0	29	20	C	20	30			0.6	RAMP RECEPTACLES			
PLATFORM QUAD RECEPIT	0.4			31	20	A	20	32	1.2			DINING HALL RECEPITS			
SPRINKLER RECEPTACLE (5)		1.0		33	20	B	20	34		1.4		DINING HALL RECEPITS			
SPARE		*		35	20	C	20	36			0.4	DOOR STRIKES			
SPARE	*			37	20	A	20	38	*			SPARE			
SPARE		*		39	20	B	20	40	*			SPARE			
SPARE		*		41	20	C	20	42	*			SPARE			
SUBTOTAL	3.7	3.7	3.3						6.3	6.9	4.2	SUBTOTAL			
VOLTAGE: 208Y/120V PHASE: 3 POLES: 4				TOTAL KVA A-PHASE				10.0				PANEL		MP	
MAIN BREAKER: 125A				BUS AMPS: 200A				TOTAL KVA B-PHASE				10.6			
MOUNTING: RECESSED				TOTAL KVA C-PHASE				7.5				LOCATION		KITCHEN	
SHORT CIRCUIT RATING: 10KAIC				TOTAL KVA				28.1							
NOTES: (ST) ARE SHUNT TRIP BREAKERS (3)															

WIRING SCHEDULE:

- ◇ (2)-4#350 KCM CU, (2)-3" GRS C.
- ◇ (2)-4#2AWG CU, (2)-1-1/2" EMT C.
- ◇ 4#4/0 AWG CU & #4 CU GND, 2-1/2" EMT C.
- ◇ 4#1/0AWG CU & #6 CU GND, 1-1/2" EMT C.
- ◇ 3#3 AWG CU & #8GND, 1-1/4" EMT C.
- ◇ 4#500KCM CU & #3GND, 3" C. (REUSE EXISTING SERVICE CONDUITS ADD NEW GROUND)
- ◇ 3#6AWG & #8GND, 1" C.
- ◇ 3#8AWG & #10GND, 1" C.



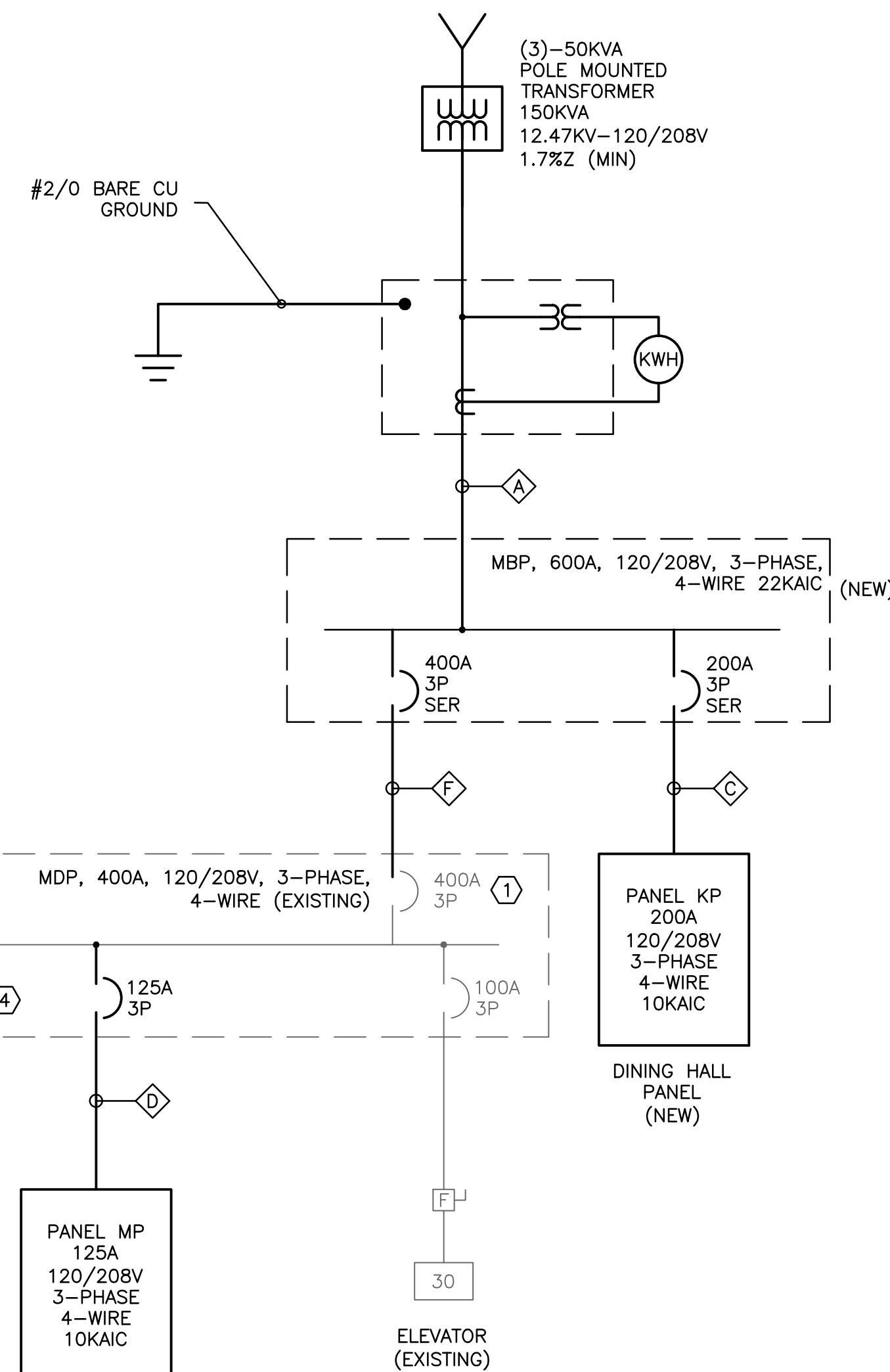
3 ONE-LINE DIAGRAM
SCALE: NOT TO SCALE

NOTES:

1. INTENT IS TO FURNISH NEW 600A SERVICE AND ASSOCIATED METERING EQUIPMENT AS REQUIRED BY CMP. COORDINATE RELOCATION ANY EXTERIOR BUILDING MOUNTED PHONE EQUIPMENT WITH PHONE COMPANY.

KEYED NOTES:

- 1 FURNISH NEW 100A, 2P BREAKER IN EXISTING PANEL P1. MATCH MANUFACTURER AND KAIC RATING OF THE EXISTING BREAKERS IN THE PANEL.
- 2 REPLACE EXISTING 200A, 3P BREAKER WITH NEW 80A, 3P BREAKER. MATCH MANUFACTURER AND KAIC RATING OF THE EXISTING BREAKERS IN THE PANEL.
- 3 FURNISH SHUNT TRIP BREAKERS. UPON A KITCHEN HOOD FIRE SUPPRESSION EVENT, DE-ENERGIZE HOOD EXHAUST FANS EF-1 AND EF-2 AND MAKE UP AIR UNIT MUA-1.
- 4 REPLACE EXISTING 30A, 3P BREAKER FOR DEMO'D WALK-IN COOLER WITH NEW 45A, 3P BREAKER. MATCH MANUFACTURER AND KAIC RATING OF THE EXISTING BREAKERS IN THE PANEL.
- 5 ALTERNATE NO. 1 NEW SPRINKLER SYSTEM. SEE KEYED NOTE 7 ON DRAWING E200 FOR FURTHER DETAILS.



SWIFTCURRENT
Engineering Services
10 Forest Falls Dr. Unit 4B
Yarmouth, ME 04096
Tel: (207) 847-9280

Bild Architecture
PO Box 8235
Portland, ME
04104
207.408.0168
evan@bildarchitecture.com



PROJECT NO.
15031
PROJECT NAME
**SALVATION ARMY ARC
PORTLAND, ME**

REVISIONS	1	2	3	4	5

DRAWN BY **CONSTRUCTION DOCUMENTS**
JMD
SHEET TITLE
**POWER & SYSTEMS PLAN -
ONE-LINE DIAGRAM & PANELS**

ISSUE DATE
10/25/16
SHEET SCALE

E

E102