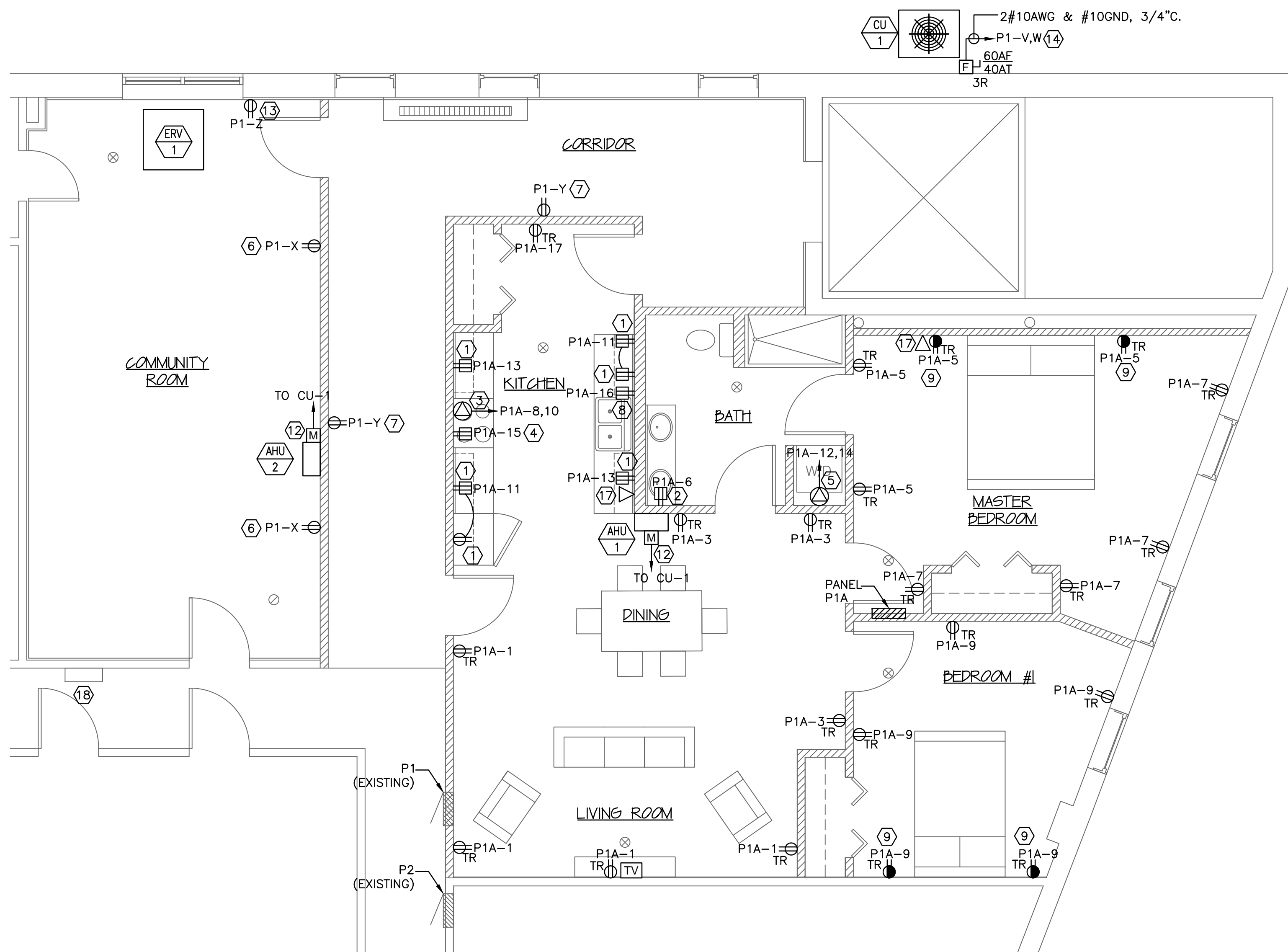


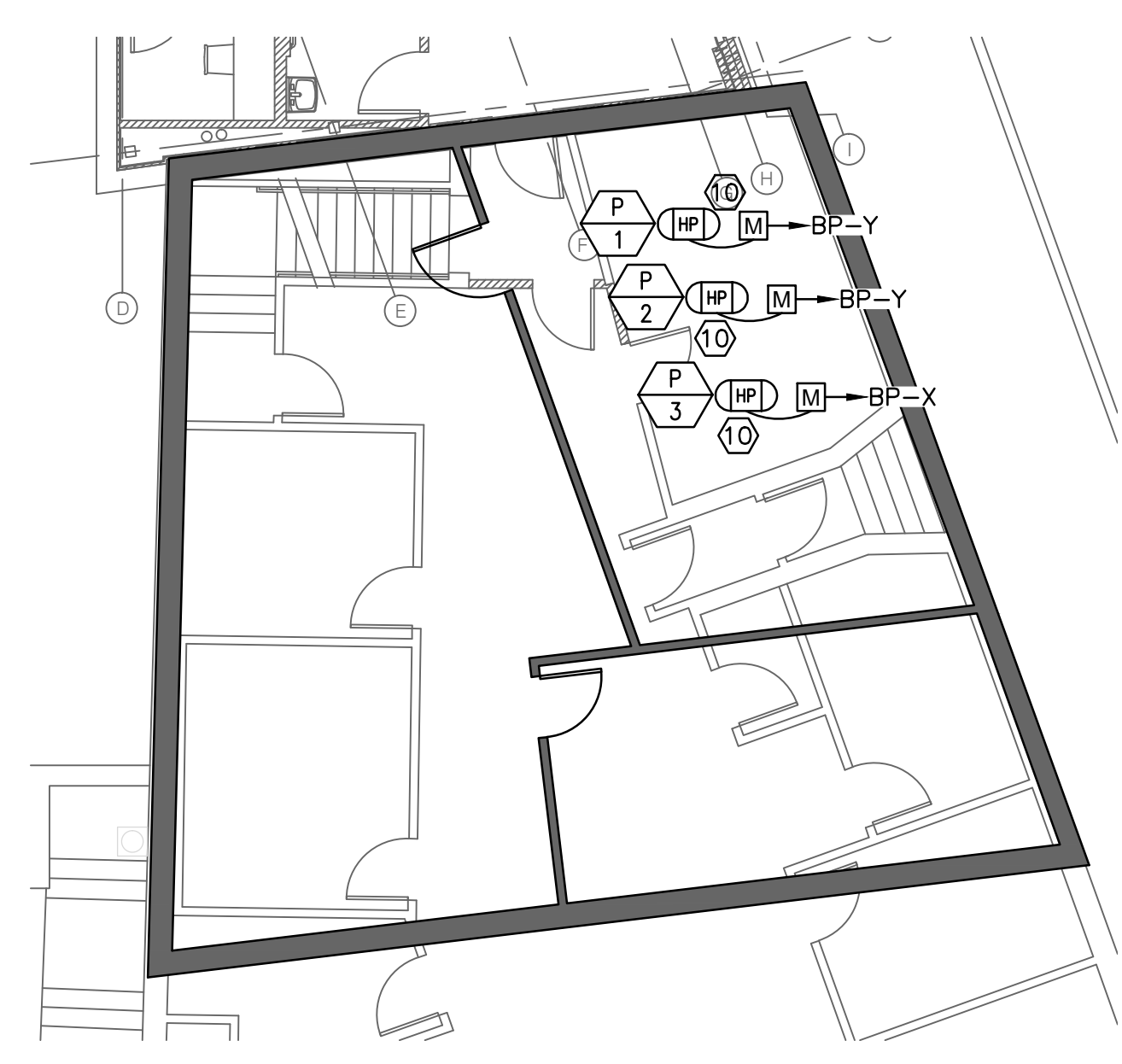
COPYRIGHT: Reuse or reproduction of the contents of this document is not permitted without written permission of Bild Architecture LLC



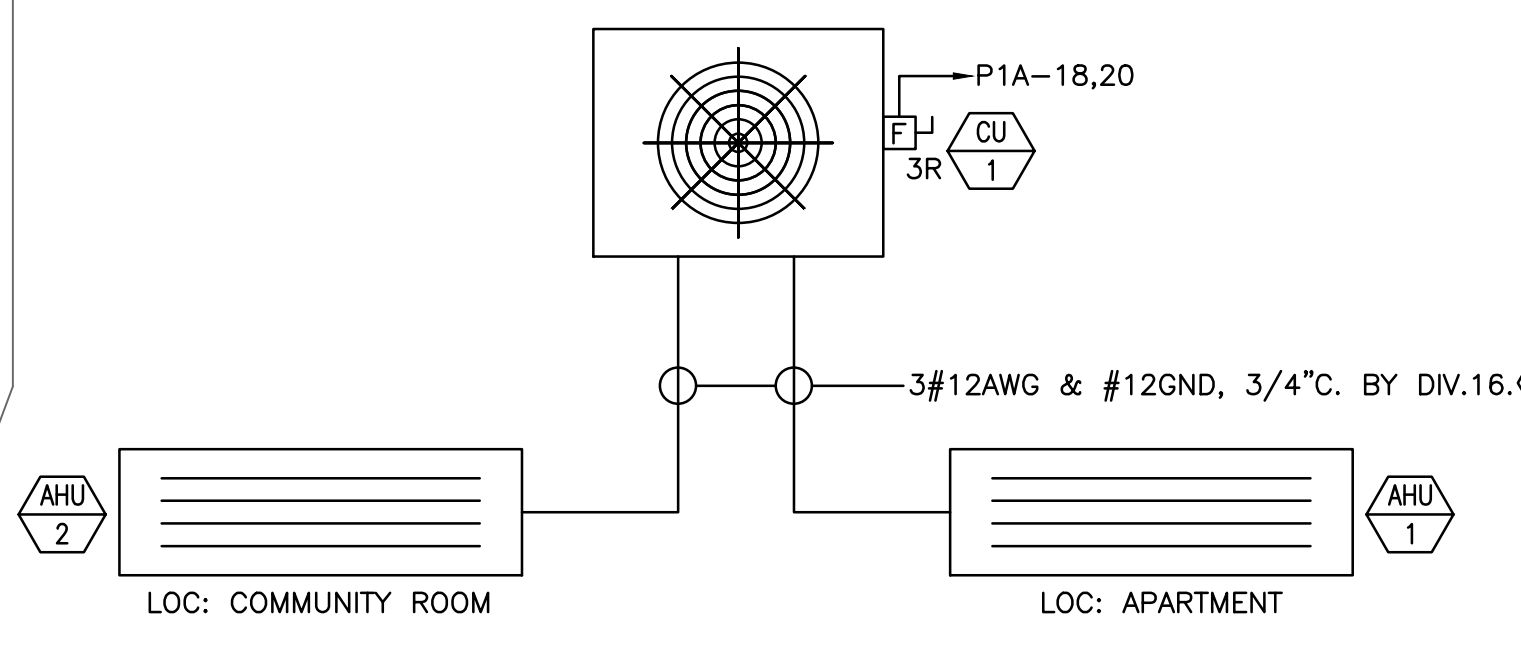
**1 ELECTRICAL POWER & SYSTEMS PLAN – APARTMENT**  
SCALE: 1/4" = 1'

DIRECTORY	KVA LOAD		CKT #	BKR AMPS	PHASE	BKR AMPS	CKT #	KVA LOAD		DIRECTORY	
	A	B						A	B		
LIVING/DINING ROOM RECEPTS (AFCI)	0.8		1	20	A	20	2	0.5		LIVING/DINING KITCHEN LTS AND SMOKES (AFCI)	
LIVING/DINING ROOM RECEPTS (AFCI)		0.6	3	20	B	20	4	0.5		BATH, BEDROOMS LTS (AFCI)	
MASTER BEDROOM RECEPTS (AFCI)	0.8		5	20	A	20	6	0.2		BATHROOM RECEPT (AFCI)	
MASTER BEDROOM RECEPTS (AFCI)		0.8	7	20	B	50	8	4.8		RANGE	
BEDROOM RECEPTS (AFCI)	1.0		9	20	A	10	10	4.8		STACKABLE WASHER/DRYER	
KITCHEN COUNTER, REFRIGERATOR RECEPTS (AFCI)		1.2	11	20	B	12		3.0			
KITCHEN COUNTER RECEPTS (AFCI)	0.4		13	20	A	30	14	3.0			
OVER THE RANGE MICROWAVE (AFCI)		1.1	15	20	B	20	16		1.0	DISHWASHER (AFCI)	
KITCHEN WALL RECEPTS (AFCI)	0.2		17	20	A	20	18	*		SPARE	
SPARE (AFCI)		*	19	20	B	20	20	*		SPARE	
<b>SUBTOTAL</b>	<b>3.2</b>	<b>3.7</b>						<b>8.5</b>	<b>9.3</b>	<b>SUBTOTAL</b>	
VOLTAGE: 120/208V		PHASE: 1		POLES: 3		TOTAL KVA A-PHASE		11.7		PANEL	P1A
MAIN LUGS ONLY		BUS AMPS: 125A		TOTAL KVA B-PHASE		13.0					
MOUNTING: SURFACE										LOCATION	APARTMENT
SHORT CIRCUIT RATING: 10KAIC						TOTAL KVA		24.7			

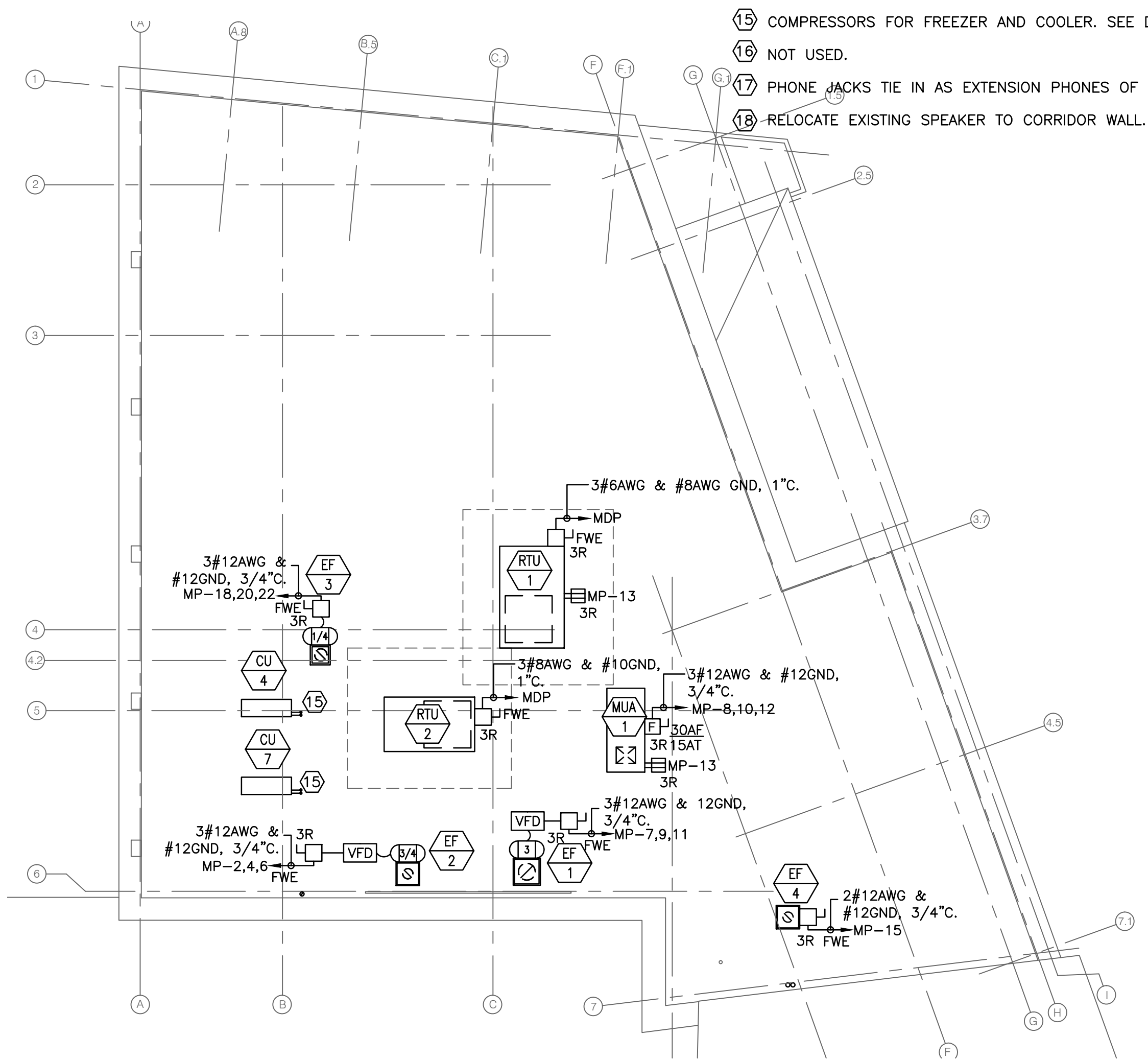
**2 APARTMENT PANEL SCHEDULE**  
NOT TO SCALE



**3 ELECTRICAL DETAIL – BASEMENT PLAN**  
SCALE: 1/8" = 1'



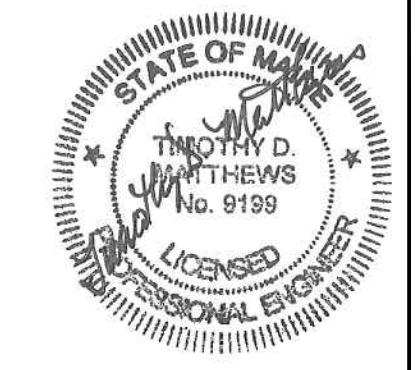
**4 CU-1/AHU-1 WIRING DIAGRAM**  
SCALE: NOT TO SCALE



**5 DINING HALL ROOF PLAN**  
SCALE: 1/8" = 1'

**NOTES:**

- SEE E000 FOR LEGEND, ABBREVIATIONS AND GENERAL NOTES.
- MOUNT 6" ABOVE COUNTERTOP. COORDINATE WITH BACKSPLASH.
- MOUNT 42" AFF TO CENTER.
- RANGE RECEPTACLE. COORDINATE NEMA RATING OF RECEPTACLE WITH RANGE. FURNISH 3#8AWG & #10GND WIRING.
- OVER-THE-RANGE MICROWAVE WITH EXHAUST FAN. COORDINATE HEIGHT WITH ARCHITECTURAL ELEVATIONS.
- WASHER/DRYER (STACKED). MOUNT RECEPTACLE 36" AFF. COORDINATE NEMA RATING OF RECEPTACLE WITH APPLIANCE. FURNISH 3#10AWG & #10GND WIRING.
- CONNECT RECEPTACLES TO NEW 1-POLE 20AMP BREAKER IN EXISTING PANEL P1. FURNISH NEW BREAKER TO MATCH MANUFACTURER PART NUMBER AND KAIC RATING AS IN PANEL. MARK BREAKER "CONFERENCE ROOM RECEPTACLES" IN PANEL BREAKER LIST. LOAD IS 0.8 KVA.
- CONNECT RECEPTACLES TO NEW 1-POLE 20AMP BREAKER IN EXISTING PANEL P1. FURNISH NEW BREAKER TO MATCH MANUFACTURER PART NUMBER AND KAIC RATING AS IN PANEL. MARK BREAKER "CORRIDOR RECEPTACLES" IN PANEL BREAKER LIST. LOAD IS 0.4 KVA.
- DISHWASHER.
- TOP RECEPTACLE ON WALL SWITCH. SEE LIGHTING PLAN FOR WIRING.
- FURNISH NEW 20A, 1P BREAKER IN BOILER ROOM PANEL FOR P-3 AND A SECOND FOR P-1 & P-2. COORDINATE FINAL LOCATION OF PUMPS WITHIN THIS ROOM IN FIELD. FURNISH NEW BREAKER TO MATCH MANUFACTURER PART NUMBER AND KAIC RATING AS IN PANEL.
- REUSE EXISTING 20A, 2P BREAKER IN PANEL P1-6,8 FORMERLY FOR DISH MACHINE. FURNISH 2#12 & #12GND, 3/4"C. WIRING.
- REFERENCE MANUFACTURER'S REQUIREMENTS FOR TERMINATIONS.
- CONNECT TO NEW 1-POLE 20 AMP BREAKER IN EXISTING PANEL P1. FURNISH NEW BREAKER TO MATCH MANUFACTURER PART NUMBER AND KAIC RATING AS IN PANEL. MARK "ERV-1" IN PANEL BREAKER LIST. LOAD IS 0.2 KVA.
- CONNECT TO NEW 2-POLE, 40 AMP BREAKER IN EXISTING PANEL P1. FURNISH NEW BREAKER TO MATCH MANUFACTURER PART NUMBER AND KAIC RATING AS IN PANEL. MARK "CU-1" IN PANEL LIST. LOAD IS 6.2KVA.
- COMPRESSORS FOR FREEZER AND COOLER. SEE DRAWING E100.
- NOT USED.
- PHONE JACKS TIE IN AS EXTENSION PHONES OF EXISTING PHONE SYSTEM.
- RELOCATE EXISTING SPEAKER TO CORRIDOR WALL.



**SWIFTCURRENT**  
Engineering Services  
10 Forest Falls Dr. Unit 4B  
Yarmouth, ME 04096  
Tel: (207) 847-9280

**Bild Architecture**  
PO Box 8235  
Portland, ME  
04104  
207.408.0168  
evan@bildarchitecture.com

PROJECT NO.  
**15031**  
PROJECT NAME  
**SALVATION ARMY ARC  
PORTLAND, ME**

REVISIONS

1	
2	
3	
4	
5	

DRAWN BY **CONSTRUCTION DOCUMENTS**  
**JMD**  
ISSUE DATE **10/25/16**  
SHEET TITLE **POWER & SYSTEMS PLAN -  
COMMUNITY ROOM & APARTMENT**  
SHEET SCALE

**E**  
**E101**