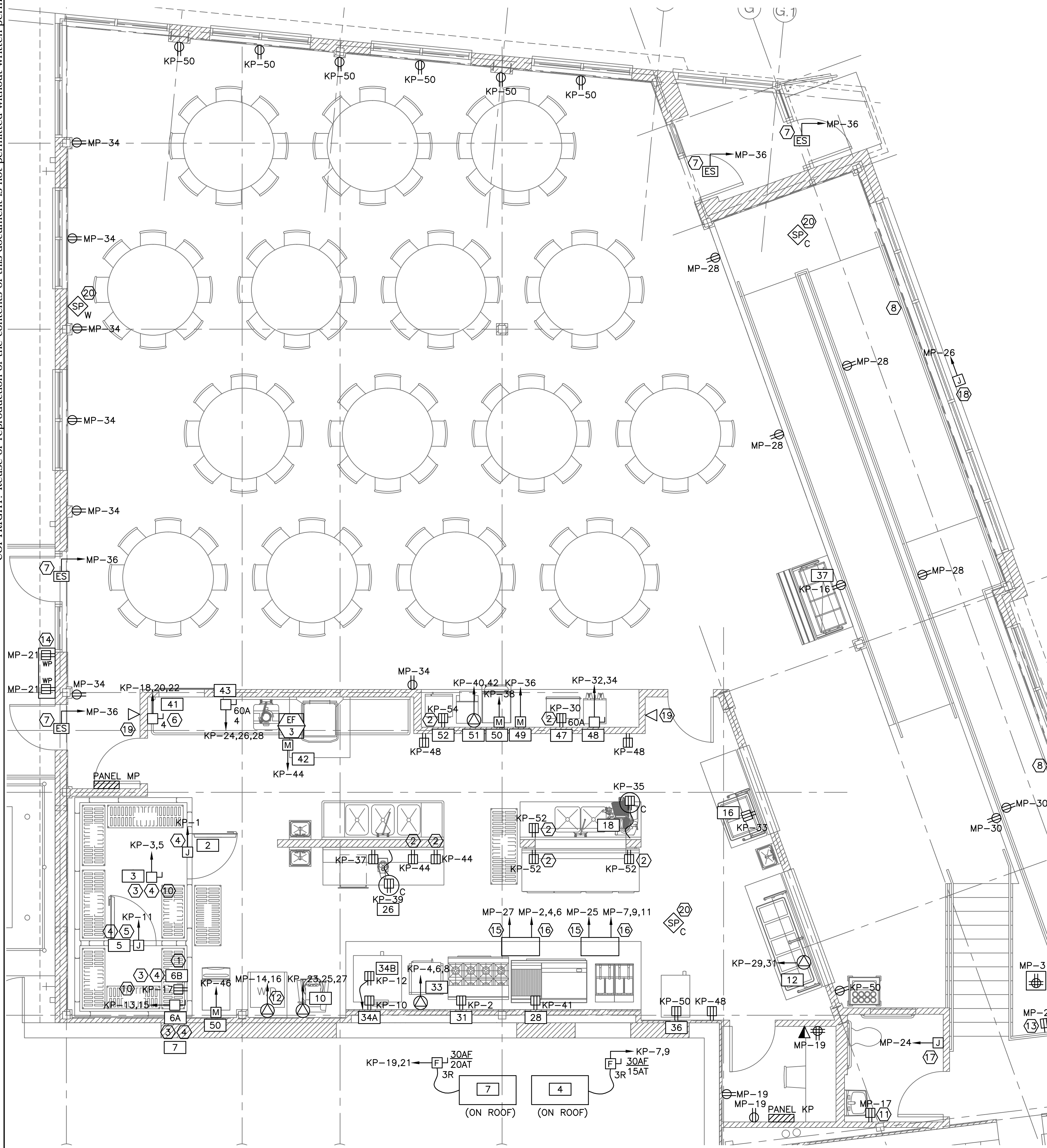


COPYRIGHT: Reuse or reproduction of the contents of this document is not permitted without written permission of Bild Architecture LLC



1 ELECTRICAL POWER & SYSTEMS PLAN - DINING HALL & KITCHEN
SCALE: 3/16" = 1'

KITCHEN EQUIPMENT SCHEDULE

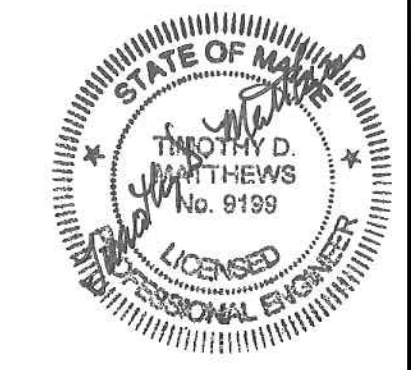
TAG	EQUIPMENT CATEGORY	AMP	KW	HP	VOLTS	PH	DIRECT	PLUG	NEMA	AFF(INCHES)	WIRING	NOTES:
2	WALK-IN COOLER	15.0	-	-	120	1	X		-	-	2#12AWG & #12GND	STUB FROM CEILING AND CONNECT AT TOP OF COOLER.
3	EVAPORATOR COIL, COOLER	1.4	-	-	208	1	X		-	-	2#12AWG & #12GND	STUB FROM CEILING
4	COMPRESSOR, COOLER	9.6	-	1	208	1	X		-	-	2#12AWG & #12GND	MOUNT ON ROOF OF BUILDING
5	WALK-IN FREEZER	15.0	-	-	120	1	X		-	-	2#12AWG & #12GND	STUB FROM CEILING AND CONNECT AT TOP OF FREEZER
6	EVAPORATOR COIL, FREEZER	6.4	-	-	208	1	X		-	-	2#12AWG & #12GND	STUB FROM CEILING
		4.1	-	-	120	1	X	X	72"	2#12AWG & #12GND		
7	COMPRESSOR, FREEZER	14.1	-	1	208	1	X		-	-	2#12AWG & #12GND	MOUNT ON ROOF OF BUILDING
10	MIXER, 40-QUART	7.0	-	2	208	3		X	X	50"	3#12AWG & #12GND	
12	HOT FOOD WELLS	20.4	-		208	1		X	X	24"	2#10AWG & #10GND	X
16	COLD FOOD WELLS	7.8	-	1/3	120	1		X	X	24"	2#12AWG & #12GND	X
18	SLICER	5.4	-	1/2	120	1		X	X	CEILING CORD	2#12AWG & #12GND	FURNISH DROP CORD RECEPTACLE.
19	REFRIGERATOR WORK TOP	12.3	-	1/3	120	1		X	X	FLOOR PEDISTAL	2#12AWG & #12GND	FURNISH FLOOR PEDISTAL RECEPTACLE
26	FOOD PROCESSOR	7.0	-	1	120	1		X	X	CEILING CORD	2#12AWG & #12GND	FURNISH DROP CORD RECEPTACLE
28	EQUIP. STAND FREEZER BASE	5.7	-	1/4	120	1		X	X	24"	2#12AWG & #12GND	X
31	EQUIP. STAND REFRIG. BASE	5.7	-	1/4	120	1		X	X	24"	3#8AWG & #10GND	X
33	STEAMER, CONNECTIONLESS	28.0	10.0	-	208	3		X	X	50"	2#12AWG & #12GND	X
34	CONVECTION OVEN	6.0	-	1/2	120	1		X	X	24"	2#12AWG & #12GND	X
		6.0	-	1/2	120	1		X	X	50"	2#12AWG & #12GND	X
35	EXHAUST HOOD	X		X	X	X				X	2#12AWG & #12GND	X
36	HEATED/HOLDING CABINET	13.8	1.65	X	120	1		X	X	18"	2#12AWG & #12GND	X
37	SALAD BAR	7.0	-	1/4	120	1		X	X	18"	2#12AWG & #12GND	X
41	DISPOSER	3.3	-	2	208	3	X			24"	3#12AWG & #12GND	MOUNT DISCONNECT ON WALL IN ACCESSIBLE LOCATION
42	CONDENSATE HOOD	5.8	-	1/4	120	1	X		X	-	2#12AWG & #12GND	X
43	DISHWASHER W/ BOOSTER HTR.	45.5	-	-	208	3	X			24"	2#12AWG & #12GND	MOUNT DISCONNECT ON WALL IN ACCESSIBLE LOCATION
47	MILK DISPENSER	1.4	-	1/10	120	1		X	X	50"	2#12AWG & #12GND	X
48	COFFEE BREWER, DUAL	28.3	5.9	-	208	1	X			50"	3#8AWG & #10GND	X
49	ICE/BEVERAGE DISPENSER	2.8	-	-	120	1	X			24"	2#12AWG & #12GND	X
50	ICE MACHINE	14.4	-	-	120	1	X			84"	2#12AWG & #12GND	X
51	TOASTER, HORIZ. CONVEYOR	18.5	3.8	-	208	1		X	X	50"	2#10AWG & #10GND	X
52	MICROWAVE OVEN	16.0	2.0	-	120	1		X	X	50"	2#12AWG & #12GND	X

NOTES:

1. SEE E000 FOR LEGEND, ABBREVIATIONS AND GENERAL NOTES.

KEYED NOTES:

- ① MOUNT 6"-0" AFF FOR EVAPORATOR COIL. (IN WALK-IN)
- ② MOUNT 6" ABOVE COUNTERTOP. COORDINATE WITH BACKSPASH.
- ③ ELECTRICAL CONTRACTOR TO RUN CONTROL WIRING BETWEEN EVAPORATORS AND REMOTE CONDENSING UNITS FOR WALK-IN COOLER AND FREEZER. COORDINATE WITH KITCHEN EQUIPMENT CONTRACTOR (KEC).
- ④ ELECTRICAL CONTRACTOR TO INSTALL SEAL-OFF FITTINGS ON ALL CONDUIT PENETRATING WALK-IN COOLER AND FREEZER.
- ⑤ ELECTRICAL CONTRACTOR TO PROVIDE 115 VOLT W/P RECEPTACLE IN FREEZER FOR DRAIN LINE HEAT TAPE HEAT TAPE FURNISHED AND INSTALLED BY ELECTRICAL CONTRACTOR.
- ⑥ ELECTRICAL CONTRACTOR TO INTERWIRE SOLENOID VALVE AND CONTROL PANEL TO DISPOSER.
- ⑦ ELECTRIC DOOR STRIKE TO BE WIRED INTO SECURITY SYSTEM. THIS WILL LOCK, BUT AUTOMATICALLY RELEASE UPON FIRE ALARM ACTIVATION. PROVIDE 120V POWER TO POWER SUPPLY, WIRE THE TAE DRY CONTACT INPUT AND ALL COORDINATION WITH OWNERS SECURITY COMPANY.
- ⑧ THERE ARE CURRENTLY (2) EXISTING ELECTRICAL CONDUITS ON EXTERIOR OF BUILDING THAT SHOULD BE RELOCATED INTO OUT CEILING PLENUM UNDER THE SCOPE OF THIS PROJECT.
- ⑨ NOT USED.
- ⑩ WALK-IN COOLER AND FREEZER ARE FURNISHED WITH DRY-TYPE CONTACTS THAT SHALL BE TIED INTO EXISTING BUILDING SECURITY SYSTEM TO ALARM WHEN EQUIPMENT FAILS TO OPERATE. FURNISH CONDUIT AND WIRING TO OWNERS SECURITY PANEL. COORDINATE INSTALLATION WITH OWNERS SECURITY COMPANY.
- ⑪ MOUNT 42" AFF.
- ⑫ WASHER/DRYER (STACKED) MOUNT RECEPTACLE 36" AFF. COORDINATE NEMA RECEPTACLE NUMBER WITH APPLIANCE. FURNISH 3#10AWG & #10GND WIRING.
- ⑬ RECEPTACLE FOR DEHUMIDIFIER (FUTURE) UNDER RAMP.
- ⑭ TWO-GANG WEATHER PROOF WHILE-IN-USE COVER WITH TWO DUPLEX GFCI RECEPTACLES. THOMAS & BETTS 2KCU OR EQUIVALENT.
- ⑮ KITCHEN HOOD CONTROL CIRCUIT. FURNISH SHUNT TRIP TO ALL BREAKERS FEEDING CIRCUITS LOCATED UNDER THE HOOD. RELAY CONTACT SHALL DE-ENERGIZE ALL CIRCUITS PRIOR TO DISPENSING FIRE SUPPRESSANT. ADDITIONALLY, CONNECT DRY CONTACT CLOSURE TO FIRE ALARM SYSTEM MONITOR MODULE.
- ⑯ HOOD FANS EF-1 AND EF-2 ARE LOCATED ON ROOF ABOVE KITCHEN.
- ⑰ AUTOMATIC HAND DRYER. COORDINATE MOUNTING HEIGHT WITH ARCHITECTURAL ELEVATION PLAN.
- ⑱ JUNCTION BOX FOR BUILDING SIGNAGE, BY OWNER. COORDINATE LOCATION AND HEIGHT WITH OWNER.
- ⑲ PHONE JACKS TIE IN AS EXTENSION PHONES OF EXISTING PHONE SYSTEM.
- ⑳ NEW SPEAKER TO BE TIED INTO EXISTING INTERCOM SYSTEM. COORDINATE WALL MOUNTING HEIGHT WITH ARCHITECTURAL ELEVATIONS.
- ㉑ QUAD RECEPTACLE FLOORBOX SURFACE-MOUNTED ON TOP OF PLATFORM.
- ㉒ RECEPTACLE FOR ALTERNATE NO. 1 NEW SPRINKLER SYSTEM. SEE KEYED NOTE 7 ON DRAWING E200.



SWIFTCURRENT
Engineering Services
10 Forest Falls Dr. Unit 4B
Yarmouth, ME 04096
Tel: (207) 847-9280

Bild Architecture
PO Box 8235
Portland, ME
04104
207.408.0168
evan@bildarchitecture.com

PROJECT NO.
15031
PROJECT NAME
**SALVATION ARMY ARC
PORTLAND, ME**

REVISIONS
1 -
2 -
3 -
4 -
5 -

DRAWN BY **CONSTRUCTION DOCUMENTS**
JMD
SHEET TITLE
**POWER & SYSTEMS PLAN -
DINING HALL & KITCHEN**

ISSUE DATE
10/25/16
SHEET SCALE

E
E100