

POWER SYMBOLS

	CIRCUIT BREAKER
	GROUND CONNECTION
	HOME RUN TO PANEL (CKT. NO. AS SHOWN)
	TRANSFORMER
	CURRENT TRANSFORMER
	POTENTIAL TRANSFORMER
	20 AMPERE, 120 VOLT DUPLEX RECEPTACLE, +18" AFF
	20 AMPERE, 120 VOLT DUPLEX HOSPITAL GRADE RECEPTACLE, +18" AFF
	20 AMPERE, 120 VOLT DOUBLE DUPLEX RECEPTACLE, +18" AFF
	20 AMPERE, 120 VOLT DOUBLE DUPLEX HOSPITAL GRADE RECEPTACLE, +18" AFF
	20 AMPERE, 120 VOLT SINGLE RECEPTACLE
	20 AMPERE, 120 VOLT DUPLEX HOSPITAL GRADE GFCI RECEPTACLE
	20 AMPERE, 120 VOLT DOUBLE DUPLEX HOSPITAL GRADE GFCI RECEPTACLE
	20 AMPERE, 120 VOLT DUPLEX GFCI RECEPTACLE, +18" AFF
	OTHER POWER RECEPTACLE NEMA DESIGNATION AS NOTED
	MOTOR
	JUNCTION BOX
	POWER POLE CONNECTION TO MODULAR FURNITURE WHIP
	TRANSFORMER
	CIRCUIT BREAKER SIZED AS NOTED
	ELECTRICAL PANEL
	BUS DUCT AMPERE RATING AS NOTED
	FLOOR RECEPTACLE CONDUIT INSTALLED IN SLAB
	UNFUSED SAFETY SWITCH, RATING AS NOTED POLES AMPERES
	FUSED SAFETY SWITCH, RATING AS NOTED FRAMESIZE FUSE/TRIP NEMA RATING
	MAGNETIC MOTOR STARTER, RATING AS NOTED
	MANUAL TOGGLE OPERATED MOTOR STARTER
	ELECTRIC ACTUATED VALVE
	MOTOR CONTACTOR
	CONTACT NORMALLY OPEN
	CONTACT NORMALLY CLOSED
	SELECTOR SWITCH
	TEMPERATURE SWITCH
	PILOT LIGHT

LIGHTING SYMBOLS

	LIGHT FIXTURE
	LIGHT FIXTURE W/ EMERGENCY BATTERY BALLAST
	WALL MOUNTED FIXTURE
	PENDANT MOUNTED FIXTURE
	STRIP/WRAP FIXTURE
	EXTERIOR WALL-PACK
	ROUND RECESSED CEILING MOUNTED FIXTURE
	SURFACE MOUNTED FIXTURE
	WALL MOUNTED LIGHTING FIXTURE
	WALL SCONCE
	TRACK LIGHTING FIXTURE (TRACK MOUNTED FIXTURE TYPE MAY VARY)
	EMERGENCY LED EXIT SIGN
	COMBINATION EMERGENCY EXIT SIGN & LIGHTING FIXTURE WITH DUAL LAMPS HEADS BATTERY AND CHARGER
	EMERGENCY LIGHTING FIXTURE WITH DUAL LAMPS HEADS BATTERY AND CHARGER
	REMOTE EMERGENCY LIGHTING LAMP HEAD
	LIGHT SWITCH DENOTES FIXTURE SWITCHED P = PILOT LIGHT (WHERE NOTED) 3 = 3-WAY (WHERE NOTED) 4 = 4-WAY (WHERE NOTED)
	ULTRASONIC/INFRARED OCCUPANCY SENSOR C = CEILING MOUNTED W = WALL MOUNTED 48" AFF (TO TOP)
	TIME CLOCK
	LIGHTING CONTACTOR
	PHOTOCELL

FIRE ALARM SYMBOLS

	PULL STATION
	FIRE ALARM AUDIBLE/VISIBLE NOTIFICATION APPLIANCE (GENERAL EVACUATION)
	STROBE UNIT XX= CANDELA
	NON-SYSTEM STROBE UNIT
	MINI HORN UNIT
	SMOKE DETECTOR
	FIXED TEMP HEAT DETECTOR (135F OR 200F)
	FIRE ALARM CONTROL PANEL
	ANNUNCIATOR
	MASTER BOX
	DIGITAL COMMUNICATOR
	DUCT SMOKE DETECTOR
	REMOTE TEST STATION
	SPRINKLER TAMPER SWITCH
	SPRINKLER FLOW SWITCH
	SPRINKLER PRESSURE SWITCH
	MONITOR MODULE
	CONTROL MODULE
	NON-SYSTEM SMOKE DETECTOR STR = DENOTES INTEGRAL STROBE FOR H/C UNITS
	RED MASTER BOX LIGHT
	KNOX BOX, FBO
	HOOD EXT SYSTEM
	DOOR HOLDER
	SIGNAL POWER EXTENDER

SYSTEMS SYMBOLS

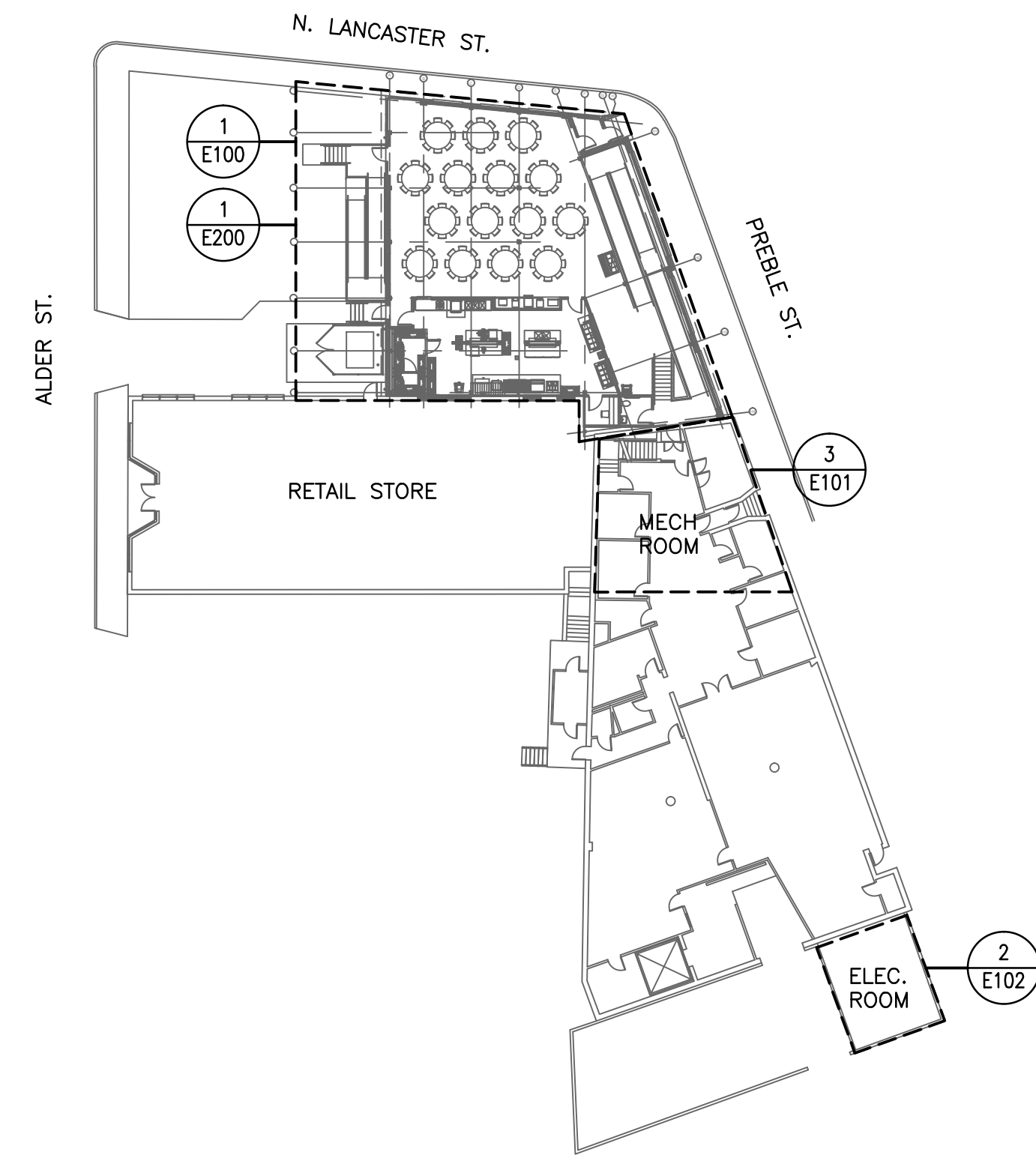
	TELEPHONE SYSTEM WALL JACK
	COMBINATION VOICE/DATA SYSTEM OUTLET
	COMBINATION VOICE/DATA SYSTEM OUTLET IN FLOOR BOX. FURNISH 1" CONDUIT IN SLAB
	CATV JACK
	SECURITY SYSTEM DOOR SWITCH
	ELECTRIC DOOR LOCK SET
	SECURITY SYSTEM CARD ACCESS PAD
	INTERCOM SYSTEM SPEAKER C = CEILING MOUNTED W = WALL MOUNTED 48" AFF (TO TOP)
	INTERCOM MASTER STATION
	CABLE TRAY
	PUSH BUTTON
	DOOR BELL
	CAMERA

ABBREVIATIONS

A	AMPERE
AC	ALTERNATING CURRENT
AFF	ABOVE FINISHED FLOOR
AFG	ABOVE FINISHED GRADE
AIC	AMPERES INTERRUPTING CAPACITY
AL	ALUMINUM
ASYM	ASYMMETRICAL
ATS	AUTOMATIC TRANSFER SWITCH
AUX	AUXILIARY
AWG	AMERICAN WIRE GAUGE
BKR	BREAKER
C	CONDUIT
CAB	CABINET
CB	CIRCUIT BREAKER
CKT	CIRCUIT
CT	CURRENT TRANSFORMER
CU	COPPER
DC	DIRECT CURRENT
DISC	DISCONNECT
EG	EQUIPMENT GROUND
EH	ELECTRICALLY HELED
EM	EMERGENCY
EMT	ELECTRICAL METALLIC TUBING
EO	ELECTRICALLY OPERATED
EPR	ETHYLENE PROPYLENE RUBBER
EQUIP	EQUIPMENT
EX	EXTERIOR
FA	FIRE ALARM
FC	FOOT-CANDLE
FDR	FEEDER
FLUOR	FLUORESCENT
FS	FLOW SWITCH (FA SYSTEM)
FVNR	FULL VOLTAGE NON REVERSING
FVR	FULL VOLTAGE REVERSING
GEN	GENERATOR
GF	GROUND FAULT
GFI	GROUND FAULT CIRCUIT INTERRUPTER
GND	GROUND
H	HAND HOLE
HOA	HAND-OFF-AUTOMATIC
HP	HORSE POWER
HPS	HIGH PRESSURE SODIUM
HV	HIGH VOLTAGE
HZ	HERTZ
IG	ISOLATED GROUND
IMC	INTERMEDIATE METAL CONDUIT
INCAN	INCANDESCENT
JB	JUNCTION BOX
KCMIL	KILOVOLT CIRCULAR MILS
KV	KILOVOLT
KVA	KILO VOLT-AMPERE
KW	KILOWATT
KWH	KILOWATT HOUR
LPS	LOW PRESSURE SODIUM
LTG	LIGHTING
LSW	LIGHT SWITCH
LV	LOW VOLTAGE
MCB	MAIN CIRCUIT BREAKER
MCC	MOTOR CONTROL CENTER
MCP	MOTOR CIRCUIT PROTECTION
MH	METAL HALIDE
EMH	ELECTRICAL MANHOLE
MLO	MAIN LUGS ONLY
MO	MECHANICALLY OPERATED
MOD	MOTOR OPERATED DAMPER
MTS	MANUAL TRANSFER SWITCH
MV	MERCURY VAPOR
MVA	MEGAVOLT-AMPERE
NC	NORMALLY CLOSED
NO	NORMALLY OPENED
OH	OVERHEAD
OL	OVER LOAD
OOA	ON-OFF-AUTOMATIC
OSY	OUTSIDE STEM & YOKE VALVE (FA SYSTEM)
P	POLE
PB	PUSH BUTTON
PF	POWER FACTOR
PH	PHASE
PNL	PANEL
PRI	PRIMARY
PT	POTENTIAL TRANSFORMER
PVC	POLYVINYL CHLORIDE
RGSC	RIGID GALVANIZED STEEL CONDUIT
RVSS	REDUCED VOLTAGE SOLID STATE
RSC	RIGID STEEL CONDUIT
RVAT	REDUCED VOLTAGE AUTO TRANSFORMER
S	SIGNAL
SEC	SECONDARY
SHLD	SHIELDED CABLE
SW	SWITCH
SWBD	SWITCHBOARD
SYM	SYMMETRICAL
T	TELEPHONE
TR	TRANSFORMER
TBD	TO BE DETERMINED
TD	TELEDIALER
TDR	TIME DELAY RELAY
TEL	TELEPHONE
TM	TELEMETRY
UG	UNDERGROUND
UT	UTILITY
V	VOLT
VA	VOLT-AMPERE
VFD	VARIABLE FREQUENCY DRIVE
W	WATT
WH	WATT HOUR
WP	WEATHERPROOF
XFMR	TRANSFORMER
XLP	CROSS LINKED POLYETHYLENE
XP	EXPLOSION PROOF

GENERAL NOTES

- ALL WORK SHALL BE IN COMPLIANCE WITH NFPA-70, NATIONAL ELECTRICAL CODE.
- THE INTENT IS THAT THIS PROJECT WILL BE COMPLETED IN TWO PHASES. THE FIRST PHASE BEING THE WORK ASSOCIATED WITH THE NEW DINING HALL AND ONCE THAT IS COMPLETE PHASE 2 WILL BE THE RENOVATION OF THE EXISTING DINING HALL INTO THE APARTMENT ON THE SECOND FLOOR.
- ALL MOTOR SAFETY SWITCHES, DISCONNECTS AND MOTOR STARTERS ARE FURNISHED BY DIVISION 16000 UNLESS NOTED AS FURNISHED WITH EQUIPMENT (FWE).
- UNLESS OTHERWISE NOTED, CONVENIENCE RECEPTACLES SHALL BE MOUNTED 18 INCHES AFF AND LIGHTING TOGGLE SWITCHES 48 INCHES AFF.
- MOUNTING HEIGHTS FOR EQUIPMENT SHALL BE AS FOLLOWS:
CONVENIENCE RECEPTACLES: 18" AFF TO BOTTOM OF BOX
LIGHTING TOGGLE SWITCHES: 48" AFF TO TOP OF BOX
UNIT LOAD CENTERS: SUCH THAT HIGHEST BREAKER SWITCH DOES NOT EXCEED 48" AFF
UNIT INTERCOM: 48" TO TOP OF BOX.
FIRE ALARM AUDIO/VISUAL DEVICES: 80" AFF OR 6" BELOW CEILING TO TOP OF DEVICE.
FIRE ALARM PULL STATIONS: 48" TO TOP OF BOX.
- ALL PENETRATIONS THROUGH FLOORS, RATED WALLS AND PARTITIONS SHALL BE SEALED WITH A UL APPROVED FIRE SEALANT MATERIAL TO MAINTAIN THE RATING OF THE SEPARATION.
- LIGHTING TOGGLE SWITCHES SHALL BE COMMERCIAL SPECIFICATION GRADE, 120 VOLT, SIDE WIRED AS MANUFACTURED BY LEVITON, PASS & SEYMOUR, OR APPROVED EQUAL.
- CONVENIENCE RECEPTACLES SHALL BE COMMERCIAL SPECIFICATION GRADE UNLESS SHOWN OTHERWISE, GROUNDING TYPE, NEMA 5-20R, SIDE WIRED, AS MANUFACTURED BY LEVITON, PASS & SEYMOUR, OR APPROVED EQUAL.
- DEVICE COVERPLATES SHALL BE THERMOPLASTIC NYLON TYPE WITH IVORY FINISH IN ALL FINISHED SPACES. MECHANICAL ROOMS, ELECTRICAL ROOM, AND UTILITY ROOMS SHALL BE FURNISHED WITH BRUSHED STAINLESS STEEL COVERPLATES.
- UNLESS OTHERWISE NOTED ALL HOMERUNS FOR 15 OR 20A CIRCUITS SHALL BE 2#12AWG & #12 GND. HOMERUNS FED FROM 20A, 1P CIRCUITS IN EXCESS OF 100 FEET (FOR 120V CIRCUITS) SHALL BE #10AWG. ALL WIRING SHALL BE COPPER.
- CONDUIT SYSTEMS: EXPOSED INTERIOR CONDUITS SHALL BE EMT, 3/4" MINIMUM. PROPERLY SUPPORTED MC CABLE ASSEMBLIES MAY BE USED ABOVE CEILINGS AND IN WALLS. FLEXIBLE LIQUIDTIGHT CONDUIT WHIPS SHALL BE USED FOR CONNECTION TO VIBRATING EQUIPMENT IN THE MECHANICAL ROOM.



1 BUILDING KEY
SCALE: 1/32" = 1'



SWIFTCURRENT
Engineering Services
10 Forest Falls Dr. Unit 4B
Yarmouth, ME 04096
Tel: (207) 847-9280

Bild Architecture
PO Box 8235
Portland, ME
04104
207.408.0198
evan@bildarchitecture.com



PROJECT NO.
15031
PROJECT NAME
**SALVATION ARMY ARC
PORTLAND, ME**

REVISIONS
1
2
3
4
5

DRAWN BY **CONSTRUCTION DOCUMENTS**
JMD
ISSUE DATE **10/25/16**
SHEET TITLE **LEGEND, NOTES, SYMBOLS & BUILDING KEY**
SHEET SCALE

E
E000