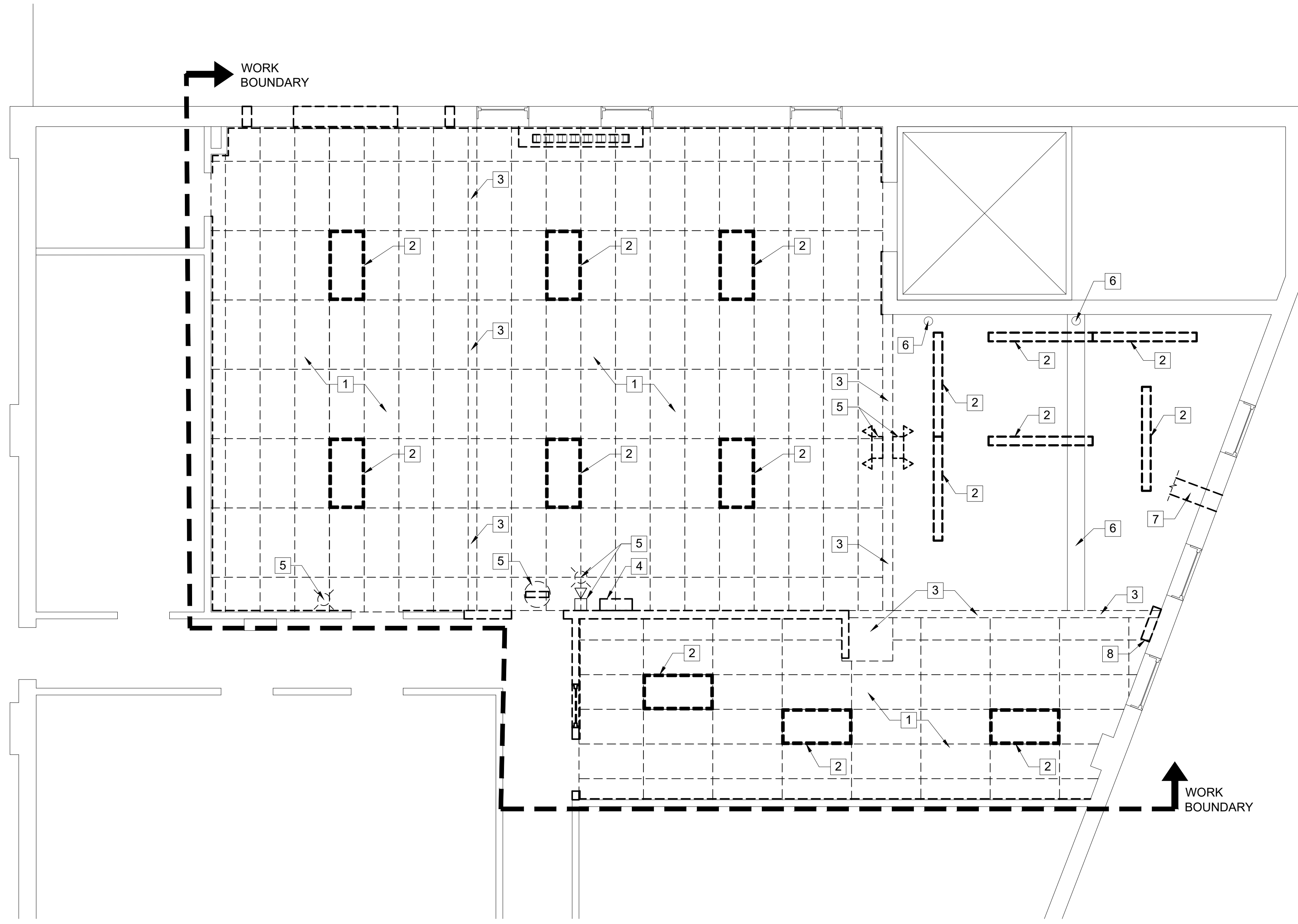


X DEMOLITION KEY NOTES

1. COMPLETELY REMOVE EXISTING SUSPENDED ACOUSTICAL CEILING TILES AND GRID - TYPICAL.
2. REMOVE EXISTING LIGHTING FIXTURES. REFER TO ELECTRICAL DWGS FOR ADDITIONAL INFORMATION - TYPICAL.
3. DEMO EXISTING CEILING SOFFIT - TYPICAL.
4. TEMPORARILY REMOVE EXISTING INTERCOM SPEAKER FOR RELOCATION. STORE IN AN UNDISTURBED LOCATION THROUGHOUT CONSTRUCTION. SEE ELECTRICAL DWGS FOR ADDITIONAL INFORMATION.
5. REMOVE EXISTING EMERGENCY/LIFE SAFETY DEVICES - TYPICAL. SEE ELECTRICAL DWGS FOR ADDITIONAL INFORMATION.
6. EXISTING STRUCTURE TO REMAIN - TYPICAL.
7. DEMO EXISTING EXHAUST & MAKE-UP AIR DUCTWORK. SEE MECHANICAL DWGS FOR ADDITIONAL INFORMATION.
8. DEMO EXISTING STEAM CAST-IRON RADIATOR. SEE MECHANICAL DWGS FOR ADDITIONAL INFORMATION.

GENERAL DEMOLITION NOTES:

1. REMOVE WALLS AS NOTED ON PLANS. VERIFY THAT WALLS TO BE REMOVED ARE NON-LOAD BEARING. IMMEDIATELY NOTIFY THE ARCHITECT OF ANY DISCREPANCIES. BEFORE PENETRATING JOISTS, BEAMS OR OTHER STRUCTURAL MEMBERS, CONSULT WITH THE ARCHITECT FOR APPROVAL.
2. CARE SHALL BE TAKEN BY THE CONTRACTOR TO PROTECT EXISTING SYSTEMS AND SURFACES TO REMAIN. ALL DAMAGE RESULTING FROM THE CONTRACTOR'S OPERATIONS SHALL BE REPAIRED OR REPLACED AS APPROVED BY THE ARCHITECT AT NO ADDITIONAL COST TO THE OWNER.
3. WHERE REMOVALS OCCUR, PATCH HOLES AND AREAS OF MISSING FINISH (IE EXPOSED STUD AREAS WHERE WALLS ARE REMOVED, FLOOR FINISHES, ETC. TO MATCH EXISTING ADJACENT SURFACE). PROVIDE A SMOOTH CONTINUOUS SURFACE FREE OF SHADOW LINES.
4. WHERE NEW WALLS OR INFILLS ABUT OR INTERSECT EXISTING WALLS, ALIGN NEW FINISH WITH EXISTING WALLS, ALIGN NEW FINISH WITH EXISTING FINISH AND FINISH JOINTS AT INTERSECTIONS SMOOTH AND CONTIGUOUS.
6. IT IS NOT EXPECTED THAT HAZARDOUS MATERIALS WILL BE ENCOUNTERED IN THE WORK. IF SUSPECTED HAZARDOUS MATERIALS ARE ENCOUNTERED, DO NOT DISTURB; IMMEDIATELY NOTIFY ARCHITECT AND OWNER. ANY ASBESTOS REMOVAL NECESSARY FOR THE SAFE IMPLEMENTATION OF THIS PROJECT SHALL BE CONTRACTED DIRECTLY BY THE OWNER. IF NECESSARY, THE CONTRACTOR SHALL COORDINATE WITH THESE EFFORTS IF ENCOUNTERED.
7. UNLESS OTHERWISE NOTED, ALL ITEMS ON DEMOLITION PLANS ARE EXISTING.
8. REMOVE ACOUSTICAL CEILING TILES (ACT) AND GRID IN AREAS AFFECTED BY MECHANICAL AND PLUMBING WORK. SEE MECHANICAL AND PLUMBING DRAWINGS FOR LOCATIONS. REINSTALL ACT AND GRID TO MATCH ORIGINAL CONDITION AND CEILING HEIGHT.
9. REFER TO MECHANICAL, ELECTRICAL, AND STRUCTURAL FOR ADDITIONAL DEMOLITION REQUIREMENTS.



SECOND FLOOR DEMO RCP
 SCALE: 1/4" = 1'-0"

Bild Architecture
 PO Box 8235
 Portland, ME
 04104
 207.408.0168
 evan@bildarchitecture.com

10/25/16
 EVAN A. CARROLL
 No. 3687
 STATE OF MAINE

PROJECT NO. **15031**
 PROJECT NAME **SALVATION ARMY ARC PORTLAND, ME**

ISSUE DATE **10/25/16**
 SHEET SCALE **1/4" = 1'-0"**

DRAWN BY **AEW**
 SHEET TITLE **2ND FLOOR DEMO RCP**

CONSTRUCTION DOCUMENTS

REVISIONS	NO.	DESCRIPTION
1	-	-
2	-	-
3	-	-
4	-	-
5	-	-

AD

102