

DOOR NO.	LOCATION		HARDWARE TYPE											MANUFACTURERS	NOTES		
	FROM	TO	HINGES	LATCHES	AUXILIARY LOCK	DEAD BOLT	EXIT DEVICE	OPERATING TRIM	SURFACE CLOSERS	DOOR STOP	DOOR GASKETING	THRESHOLD	BI-FOLD HARDWARE			KICK PLATES	
100	STAIR	ARC	HINGES	-	-	-	-	EXIT DEVICE W/ LEVER	-	SURFACE CLOSER	MAGNETIC	-	THRESHOLD	-	KICK PLATES	IVES, VON DUPRIN, LCN, PEMKO	5, 7, 8
101	DINING HALL	MAIN BUILDING	HINGES	-	-	-	-	EXIT DEVICE W/ LEVER	-	SURFACE CLOSER	MAGNETIC	-	THRESHOLD	-	KICK PLATES	IVES, VON DUPRIN, LCN, PEMKO	5, 7, 8
102	DINING HALL	ADA RESTROOM	HINGES	BATH/BEDROOM PRIVACY LOCK	-	-	-	-	-	SURFACE CLOSER	FLOOR STOP	-	-	-	KICK PLATES	IVES, SCHLAGE, LCN	-
103	DINING HALL	KITCHEN	-	-	-	-	-	-	-	-	-	-	-	-	-	-	1
104	DINING HALL	KITCHEN	-	-	-	-	-	-	-	-	-	-	-	-	-	-	1
105	DINING HALL	KITCHEN	HINGES	-	-	-	DEAD BOLT	-	PUSH AND PULL	SURFACE CLOSER	FLOOR STOP	-	-	-	KICK PLATES	IVES, SCHLAGE, LCN	-
106	DINING HALL	VESTIBULE	HINGES	-	-	KEY CYLINDAR	-	EXIT DEVICE W/ PULL	-	SURFACE CLOSER	FLOOR STOP	GASKET	THRESHOLD	-	-	IVES, SARGENT, LCN, PEMKO	6
107	VESTIBULE	EXTERIOR	HINGES	-	-	KEY CYLINDAR	-	EXIT DEVICE W/ PULL	-	SURFACE CLOSER	FLOOR STOP	GASKET	THRESHOLD	-	-	IVES, SARGENT, LCN, PEMKO	6
108	DINING HALL	EXTERIOR	HINGES	-	-	KEY CYLINDAR	-	EXIT DEVICE W/ PULL	-	SURFACE CLOSER	FLOOR STOP	GASKET	THRESHOLD	-	-	IVES, SARGENT, LCN, PEMKO	6
109	DINING HALL	KITCHEN	-	-	-	-	-	-	-	-	-	-	-	-	-	-	1
110	DINING HALL	EXTERIOR	HINGES	-	-	KEY CYLINDAR	-	EXIT DEVICE W/ PULL	-	SURFACE CLOSER	FLOOR STOP	GASKET	THRESHOLD	-	-	IVES, SARGENT, LCN, PEMKO	6
111	KITCHEN	DINING HALL	HINGES	-	-	-	DEAD BOLT	-	PUSH AND PULL	SURFACE CLOSER	FLOOR STOP	-	-	-	KICK PLATES	IVES, SCHLAGE, LCN	-
112	KITCHEN	OFFICE	HINGES	ENTRANCE/OFFICE LOCK	-	-	-	-	-	-	FLOOR STOP	-	-	-	-	IVES, SCHLAGE	-
113	DINING HALL	UNDER RAMP MECH SPACE	-	-	-	-	-	-	-	-	-	-	-	-	-	-	2
201	CORRIDOR	LOUNGE	SPRING HINGES	PASSAGE LATCH	-	-	-	-	-	-	FLOOR STOP	-	THRESHOLD	-	KICK PLATES	IVES, SCHLAGE, PEMKO	5, 7, 8
202	CORRIDOR	APARTMENT ENTRY	SPRING HINGES	ENTRANCE LOCK	-	-	DEAD BOLT	-	-	-	WALL STOP	-	THRESHOLD	-	-	IVES, SCHLAGE	5, 7, 8
203	APARTMENT ENTRY	APARTMENT CLOSET	-	-	-	-	-	-	-	-	-	-	BI-FOLD KIT	-	-	JOHNSON HARDWARE	-
204	APARTMENT DINING	APARTMENT BATHROOM	-	BATH/BEDROOM PRIVACY LOCK	-	-	-	-	-	-	WALL STOP	-	THRESHOLD	-	-	IVES, SCHLAGE	3, 4
205	APARTMENT DINING	APARTMENT MASTER BEDROOM	-	BATH/BEDROOM PRIVACY LOCK	-	-	-	-	-	-	WALL STOP	-	-	-	-	IVES, SCHLAGE	3
206	APARTMENT MASTER BEDROOM	APARTMENT MASTER CLOSET	-	-	-	-	-	-	-	-	-	-	BI-FOLD KIT	-	-	JOHNSON HARDWARE	-
207	APARTMENT MASTER BEDROOM	APARTMENT BATHROOM	-	BATH/BEDROOM PRIVACY LOCK	-	-	-	-	-	-	WALL STOP	-	THRESHOLD	-	-	IVES, SCHLAGE	3, 4
208	APARTMENT LIVING ROOM	APARTMENT BEDROOM #1	-	BATH/BEDROOM PRIVACY LOCK	-	-	-	-	-	-	WALL STOP	-	-	-	-	IVES, SCHLAGE	3
209	APARTMENT BEDROOM #1	APARTMENT BEDROOM CLOSET	-	-	-	-	-	-	-	-	-	-	BI-FOLD KIT	-	-	JOHNSON HARDWARE	-
210	CORRIDOR	APARTMENT ENTRY	SPRING HINGES	ENTRANCE LOCK	-	-	DEAD BOLT	-	-	-	WALL STOP	-	THRESHOLD	-	-	IVES, SCHLAGE, PEMKO	5, 7, 8
211	SECOND FLOOR CORRIDOR	EGRESS STAIR	HINGES	-	-	-	-	EXIT DEVICE W/ LEVER	-	SURFACE CLOSER	FLOOR STOP	-	THRESHOLD	-	KICK PLATES	IVES, VON DUPRIN, LCN, PEMKO	5, 7, 8
212	EGRESS STAIR	SECOND FLOOR CORRIDOR	HINGES	-	-	-	-	EXIT DEVICE W/ LEVER	-	SURFACE CLOSER	FLOOR STOP	-	THRESHOLD	-	KICK PLATES	IVES, VON DUPRIN, LCN, PEMKO	5, 7, 8
213	LOUNGE	LOUNGE CEILING	-	-	-	-	-	-	-	-	-	-	-	-	-	-	2
301	THIRD FLOOR CORRIDOR	EGRESS STAIR	HINGES	-	-	-	-	EXIT DEVICE W/ LEVER	-	SURFACE CLOSER	FLOOR STOP	-	THRESHOLD	-	KICK PLATES	IVES, VON DUPRIN, LCN, PEMKO	5, 7, 8

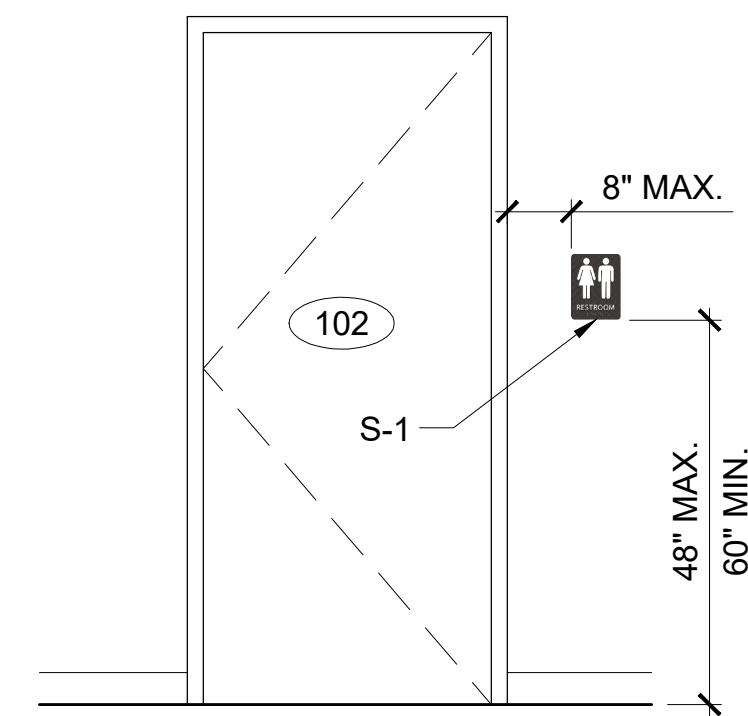
- NOTES:
- DOOR HARDWARE TO BE PROVIDED BY OVERHEAD DOOR MANUFACTURER. REFER TO OVERHEAD DOOR SPECIFICATION FOR SPECIFIED HARDWARE.
 - DOOR HARDWARE TO BE PROVIDED BY ACCESS PANEL MANUFACTURER. REFER TO ACCESS PANEL SPECIFICATION FOR SPECIFIED HARDWARE.
 - PREHUNG DOOR TO BE PROVIDED WITH HINGES.
 - PROVIDE MARBLE DOOR THRESHOLD.
 - PROVIDE UL RATED HARDWARE AT FIRE RATED DOORS.
 - PROVIDE ELECTRIC STRIKE TO BE WIRED INTO SECURITY SYSTEM. REFER TO ELECTRICAL DRAWINGS.
 - DOOR THRESHOLD AND HARDWARE SHALL RESIST THE PASSAGE OF SMOKE.
 - DOORS OPENING ONTO EXIT ACCESS CORRIDORS SHALL BE SELF-CLOSING AND SELF-LATCHING.
 - PROVIDE MAGNETIC, WALL-MOUNTED HOLD-BACK.
 - CLOSER TO HAVE "LOCK-OPEN" MECHANISM.
 - PROVIDE KICK PLATES UP TO 42".

TILE SCHEDULE						
CODE	SIZE (IN)	MANUFACTURER	PRODUCT LINE	COLOR	LOCATION	NOTES
CT-1	12 X 24	DAL-TILE	HAUTE MONDE	T.B.D.	APARTMENT BATHROOM FLOOR	-
CT-2	3 X 6	DAL-TILE	SEMI-GLOSS	WHITE	SERVING COUNTER WAINSCOTTING, BEVERAGE COUNTER BACKSPLASH, ADA RESTROOM, APARTMENT SHOWER SURROUND	1

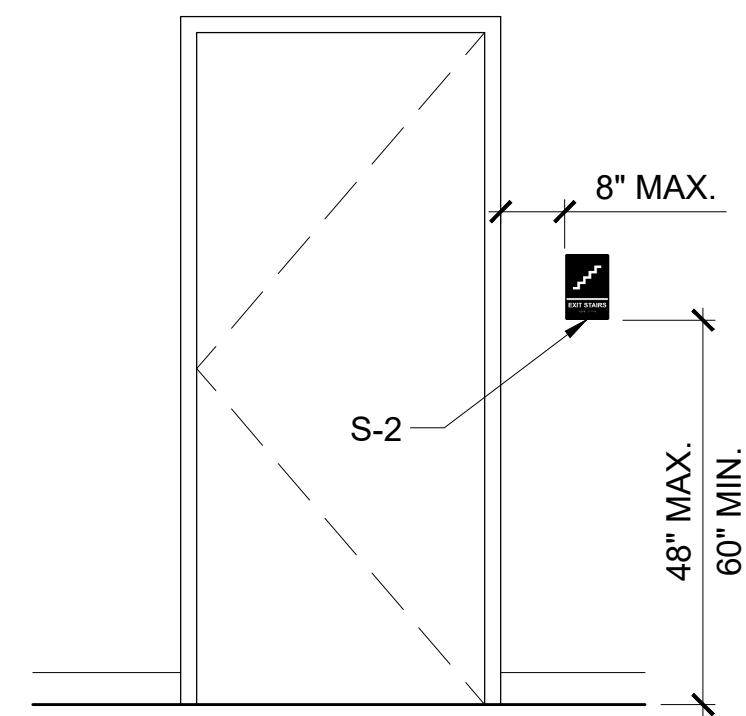
NOTES:
1. WAINSCOTTING TO BE INSTALLED AT 5'-0" AFF, UNLESS OTHERWISE NOTED.

INTERIOR SIGNAGE SCHEDULE				
CODE	LOCATION	SIZE (IN)	MANUFACTURER	NOTES
S-1	ADA RESTROOM	6 X 8	ALPHA DOG ADA SIGNS	1
S-2	EGRESS STAIRS	6 X 8	ALPHA DOG ADA SIGNS	-

NOTES:
1. REFER TO DETAIL THIS SHEET FOR ADA MOUNTING REQUIREMENTS.



ADA SIGNAGE MOUNTING
1/2" = 1'-0"



TYP. EXIT STAIR SIGNAGE MOUNTING
1/2" = 1'-0"

PAINT SCHEDULE						
CODE	DESCRIPTION	MANUFACTURER	FINISH	COLOR	LOCATION	NOTES
PT-1	PAINT PROMAR 200 ZERO VOC	SHERWIN WILLIAMS	SATIN	T.B.D.	DINING HALL, OFFICE, AND ADA RESTROOM WALLS	-
PT-2	PAINT PROMAR 200 ZERO VOC	SHERWIN WILLIAMS	SATIN	T.B.D.	KITCHEN EXTERIOR WALLS	-
PT-3	PRO INDUSTRIAL PRO-CRYL UNIVERSAL PRIMER PRO INDUSTRIAL WATERBASED CATALYZED EPOXY	SHERWIN WILLIAMS	EG-SHEL	T.B.D.	DINING HALL EXPOSED CEILING	-
PT-4	PAINT PROMAR 200 ZERO VOC	SHERWIN WILLIAMS	FLAT	T.B.D.	DINING HALL/VESTIBULE, OFFICE, ADA RESTROOM APARTMENT GYPSUM BOARD CEILING	-
PT-5	PAINT PROMAR 200 ZERO VOC	SHERWIN WILLIAMS	EG-SHEL	T.B.D.	APARTMENT, SECOND FLOOR CORRIDOR, & LOUNGE WALLS	-
PT-6	PAINT HIGH PERFORMANCE EPOXY	SHERWIN WILLIAMS	GLOSS	T.B.D.	ARCHITECTURALLY EXPOSED EXTERIOR STEEL	-
ST-1	STAIN PRE-STAIN & WOOD STAIN POLYURETHANE, WATER BASED, OIL MODIFIED	MINWAX	SEMI-GLOSS	T.B.D.	WOOD DOORS & FRAMES, WINDOW SILLS, TRIM, ARCHITECTURAL WOODWORK	-

NOTES:

FINISH SCHEDULE										
ROOM NAME	FLOOR	WALLS				WAINSCOTTING	BASE	CEILING		NOTES
		N	S	E	W			MATERIAL	FINISH	
DINING HALL	LVT	PT-1	PT-1	PT-1	PT-1	CT-2	RWB/CT-2	EXPOSED	PT-3	3, 5, 6, 9, 11, 14
DINING HALL STAIRS	VINYL	PT-1	PT-1	PLAM	PT-2	GCM	GCM/RWB	GWB	PT-4	3, 4, 5, 14
DINING HALL RAMP	RSF	PT-1	PT-1	PLAM	PLAM	GCM	GCM	GWB	PT-4	3, 4, 12, 14
UNDER RAMP SPACE	CONC	EXPOSED	EXPOSED	EXPOSED	EXPOSED	-	-	EXPOSED	-	2, 3
VESTIBULE	CONC	GLASS	BRICK	GLASS	FC	-	-	GWB	PT-4	3, 14
KITCHEN	EPOXY	PVC	PVC	PVC	PVC	-	EPOXY	ACT	-	1, 2, 3, 5, 10, 14
WALK-IN COOLER/FREEZER	EPOXY	-	-	-	-	-	EPOXY	-	-	11, 14
OFFICE	EPOXY	PT-1	PT-1	PT-1	PT-1	-	EPOXY	ACT	-	3, 14
ADA RESTROOM	EPOXY	PT-1	PT-1	PT-1	PT-1	CT-2	CT-2	ACT	-	2, 3, 11, 14
SECOND FLOOR LOUNGE	LVT	PT-5	PT-5	PT-5	PT-5	-	RWB	ACT	-	3, 14
SECOND FLOOR CORRIDOR	LVT	PT-5	PT-5	PT-5	PT-5	-	RWB	ACT	-	3, 14
APARTMENT BEDROOM #1	ENG	PT-5	PT-5	EXPOSED	PT-5	-	WD	GWB	PT-4	3, 13
APARTMENT MASTER BEDROOM	ENG	PT-5	PT-5	EXPOSED	PT-5	-	WD	GWB	PT-4	3, 13
APARTMENT LIVING ROOM	ENG	PT-5	PT-5	PT-5	PT-5	-	WD	GWB	PT-4	3
APARTMENT DINING ROOM	ENG	PT-5	PT-5	PT-5	PT-5	-	WD	GWB	PT-4	3
APARTMENT KITCHEN	ENG	PT-5	PT-5	PT-5	PT-5	-	WD	GWB	PT-4	3
APARTMENT BATHROOM	CT-1	PT-5	PT-5	PT-5	PT-5	-	CT-1	GWB	PT-4	2, 3, 7, 8, 11

- LEGEND:
- ACT - ACOUSTICAL CEILING TILES
 - CT - CERAMIC TILE
 - ENG - ENGINEERED HARDWOOD
 - EXPOSED - EXPOSED BRICKWORK
 - FC - FIBER CEMENT
 - GCM - GLAZED CONCRETE MASONRY
 - LVT - LUXURY VINYL TILE
 - PLAM - PLASTIC LAMINATE
 - PT - PAINT
 - PVC - WELDED PVC WALLBOARD
 - RSF - RESILIENT SHEET FLOORING
 - RWB - RESILIENT WALLBASE
 - WD - WOOD

- NOTES:
- CEILING TILES TO BE WASHABLE.
 - INSTALL MOISTURE RESISTANT GWB ON ALL WALLS.
 - WALL FINISH LOCATIONS REFERENCE PLAN SOUTH.
 - INSTALL PLAM AT HALF WALL ALONG DINING HALL RAMP AND STAIRS.
 - PAINT EXTERIOR WALLS OF KITCHEN PT-2.
 - WAINSCOTTING TO BE 5'-0" AFF, UNLESS OTHERWISE NOTED.
 - PROVIDE CT-2 AT SHOWER WALLS.
 - INSTALL MARBLE THRESHOLDS AT DOORS.
 - PROVIDE LVT BORDER IN DINING HALL BORDER TO CONSIST OF ONE PLANK WIDTH OF LVT MATCHING OVERALL LVT PATTERN AND COLOR.
 - REFER TO SPECIFICATION FOR PVC PANEL SUBSTRATE REQUIREMENTS.
 - REFER TO SPECIFICATIONS FOR CERAMIC TILE SUBSTRATE REQUIREMENTS.
 - REFER TO SPECIFICATIONS FOR GLAZED CONCRETE MASONRY SUBSTRATE REQUIREMENTS.
 - COMPLETELY REMOVE EXISTING PAINT AT BRICK WALLS TO BE EXPOSED.
 - PROVIDE STAINLESS STEEL CORNER GUARDS AT WINDOW JAMBS AND 5'-0" AFF AT OUTSIDE CORNERS OF GYP BD RETURNS - TYPICAL IN ALL SPACES FOR EXCEPTION OF APARTMENT.

