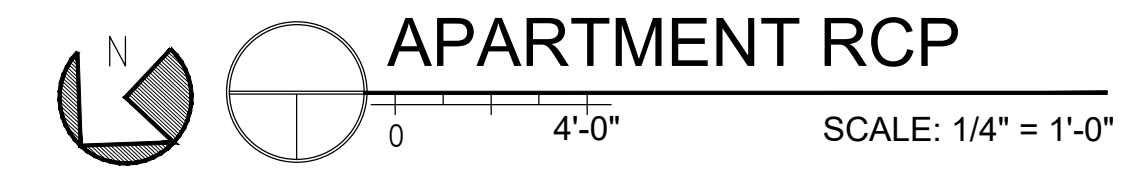


EXISTING RELOCATED SPEAKER TO BE TIED INTO EXISTING INTERCOM SYSTEM. SEE ELECTRICAL.

NEW CORRIDOR CEILING HEIGHT TO MATCH EXISTING CORRIDOR CEILING HEIGHT

36" x 36" CEILING ACCESS PANEL. COORDINATE FINAL LOCATION WITH ERV ABOVE.

SEE 15/A503 FOR SUSPENDED GYP DETAILS



- REFLECTED CEILING PLAN NOTES:
1. ALL CEILING GRID AND TILE TO BE LOCATED IN CENTER OF ROOM UNLESS OTHERWISE SHOWN. INTENT OF ARCHITECTURAL DRAWING IS THAT ALL AREAS BE SHOWN WITH GRID AT CENTER OF ROOM. CONTACT ARCHITECT FOR DIRECTION BEFORE CEILING INSTALLATION IF CENTER ALIGNMENT IS NOT INDICATED ON PLAN.
 2. ALL GYPSUM CEILING TO BE PAINTED PT-X, UNLESS NOTED OTHERWISE.
 3. ALL EXPOSED CEILINGS TO BE PAINTED PT-X, UNLESS NOTED OTHERWISE.
 4. ANY DISCREPANCIES BETWEEN ARCHITECTURAL RCP & ELECTRICAL DRAWINGS TO BE VERIFIED BY ARCHITECT BEFORE INSTALLATION.
 5. ALL EXTERIOR LIGHTING IS LOCATED ON ELECTRICAL DRAWINGS. SEE "E" SHEETS FOR DETAILS.
 6. SEE ELECTRICAL DRAWINGS FOR LOCATIONS OF ALL EMERGENCY LIGHTING.
 7. SEE ELECTRICAL DRAWINGS FOR LOCATIONS OF ALL UNDER COUNTER LIGHTING.
 8. ALL HEIGHTS ARE FROM THE LOWEST FLOOR ELEVATION UNLESS OTHERWISE NOTED.
 9. DECORATIVE PENDANTS AT SERVING COUNTER - ALLOWANCE OF \$300 EACH.
 10. CEILING HEIGHT ELEVATIONS ARE BASED ON A FINISHED FLOOR ELEVATION OF 100'-0".
 11. REFER TO DETAIL X/XX FOR GYPSUM BOARD CEILING MOUNTING.
 12. SEE LIFE SAFETY/ELECTRICAL DWGS FOR EMERGENCY DEVICES.
 13. SEE MECHANICAL DWGS FOR SUPPLY DIFFUSER, RETURN GRILLE, & DUCTWORK ROUTING.

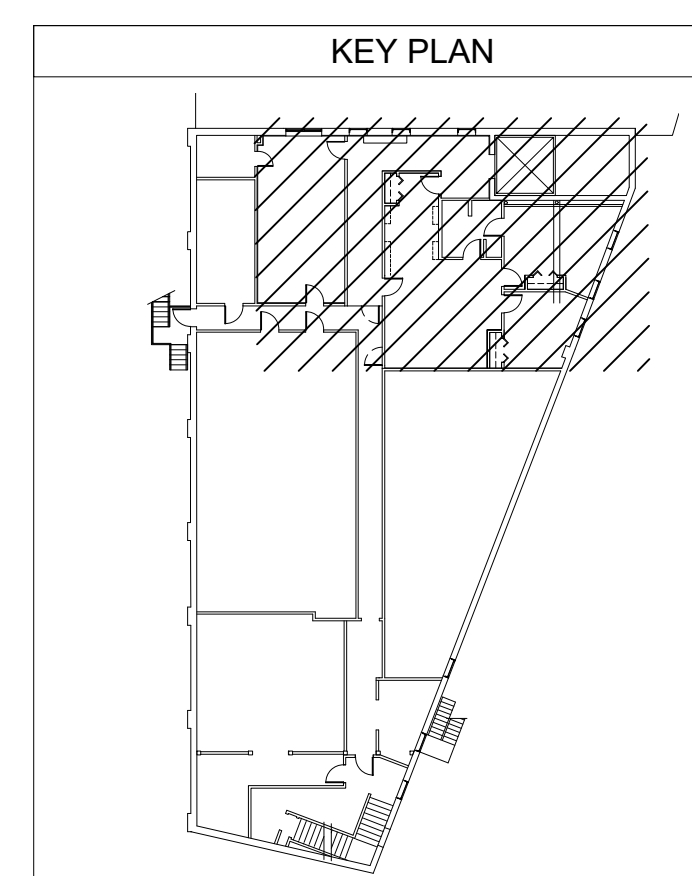
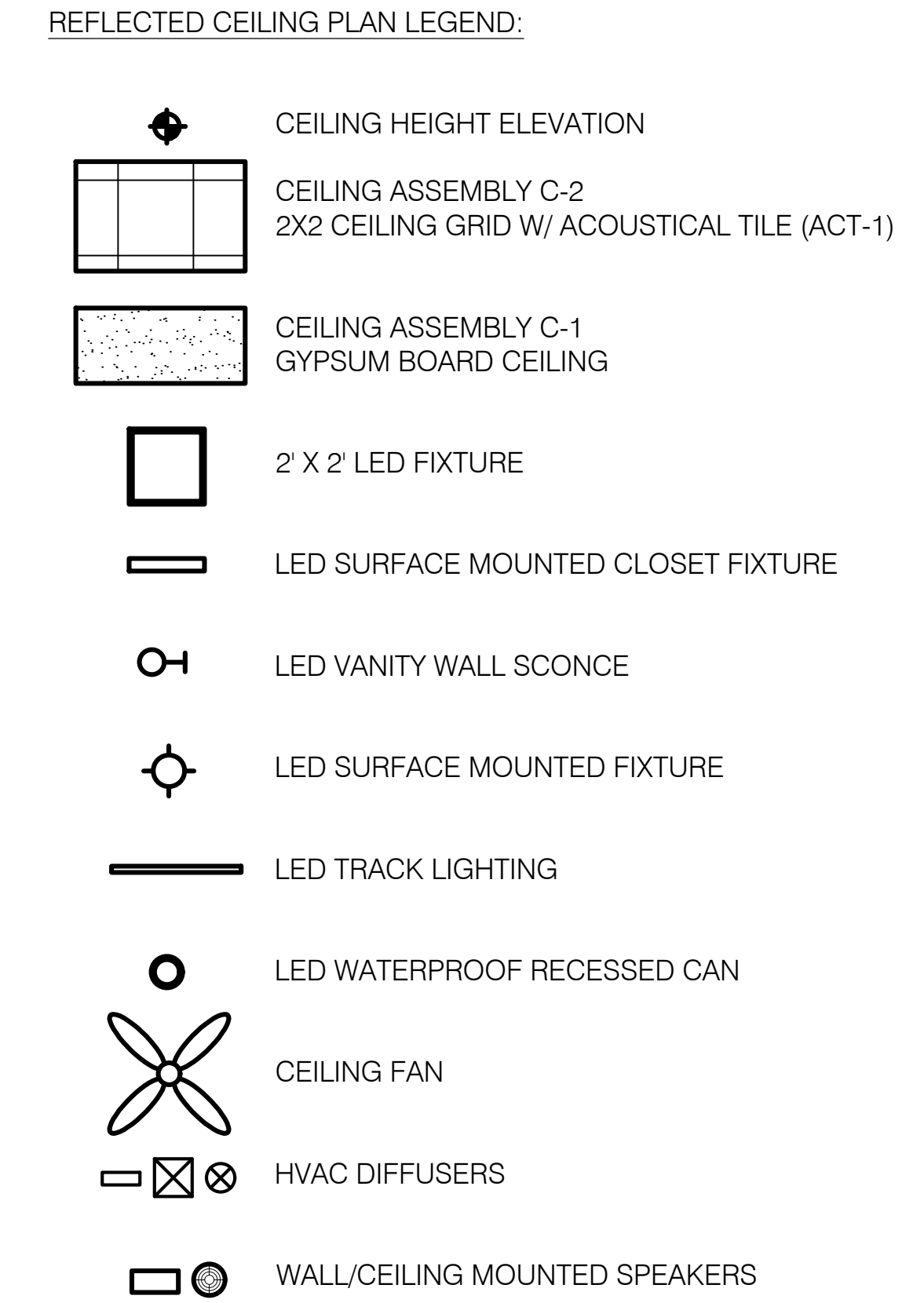


Bild Architecture
PO Box 8235
Portland, ME 04104
207.408.0168
evan@bildarchitecture.com

PROJECT NO. 15031
PROJECT NAME SALVATION ARMY ARC PORTLAND, ME

CONSTRUCTION DOCUMENTS

REVISIONS	NO.	DESCRIPTION
1	1	
2	2	
3	3	
4	4	
5	5	

APARTMENT RCP

ISSUE DATE: **10/25/16**
DRAWN BY: **AEW**
SHEET SCALE: **1/4" = 1'-0"**
SHEET TITLE: **APARTMENT RCP**

A

105