

88 Preble Street: Corner of Alder/Lancaster



88 Preble Street: Corner of Preble/Lancaster

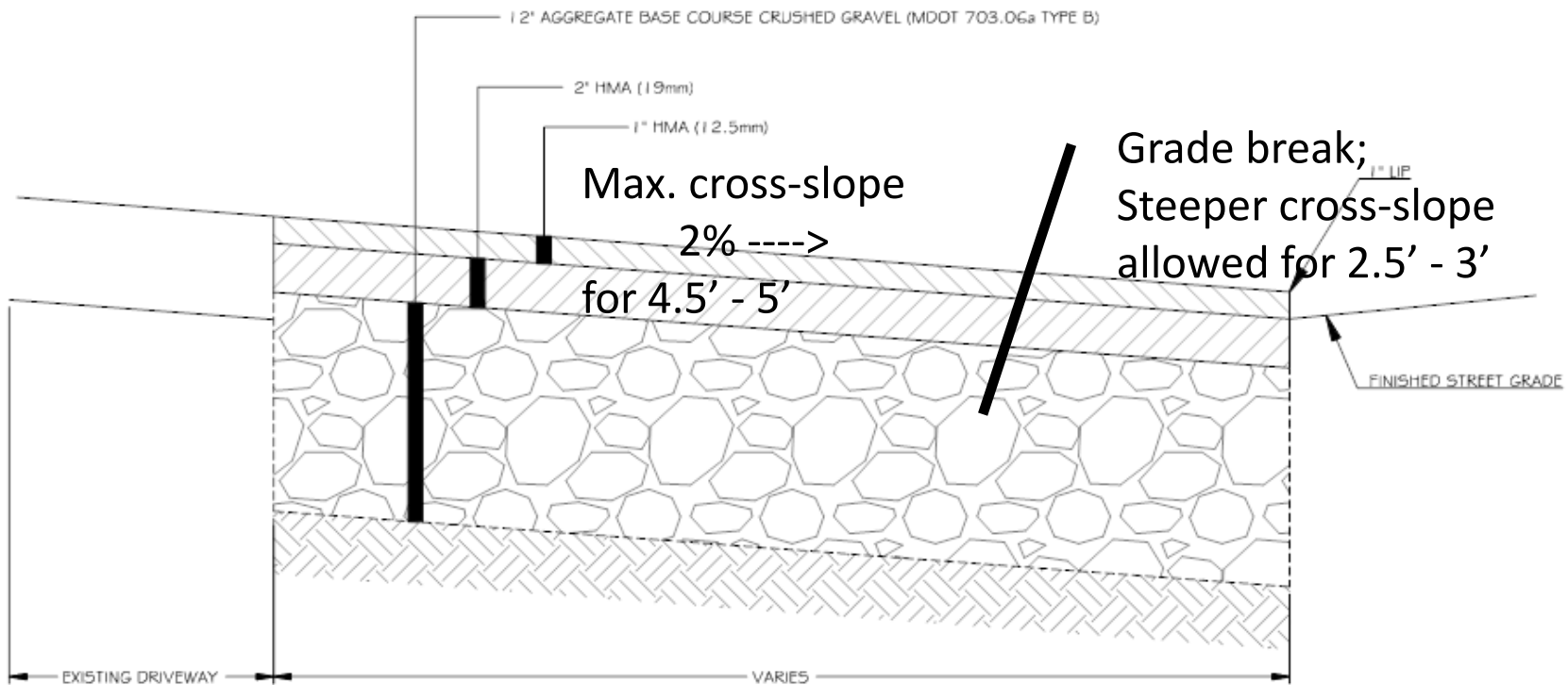


Retain catch basin and headstone as-is

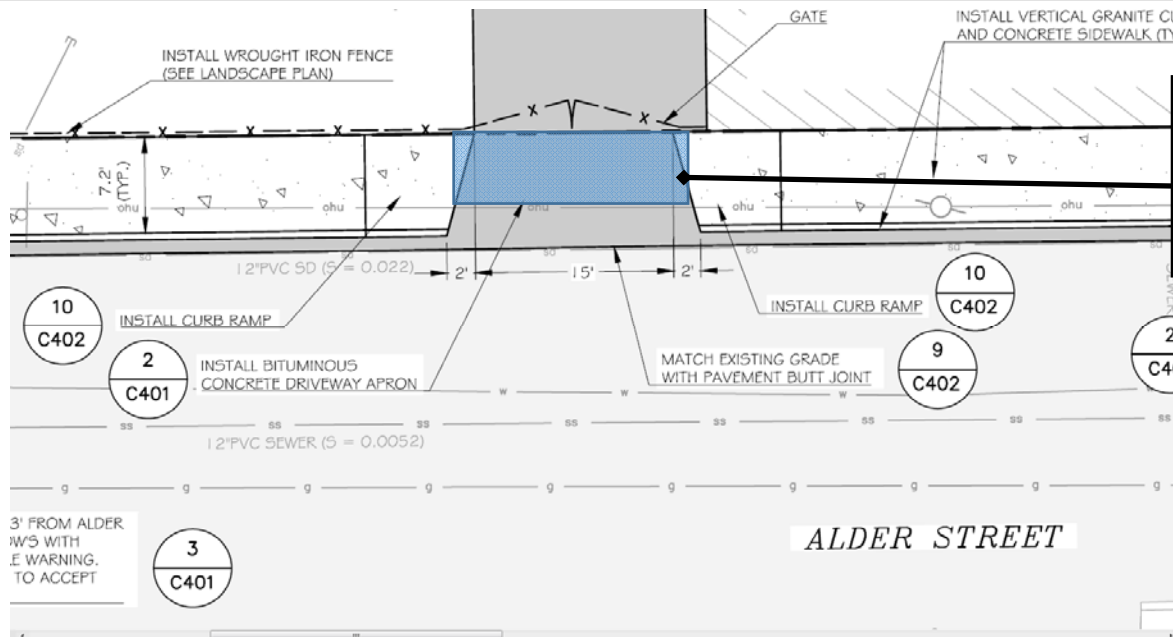
5'-7' radius curb tip-down; brick curb ramp; ramp flares max 8.3%

4' flush radius curb; add 4' wide detectable warning panel; ensure no ponding at bottom of ramp

5'-7' radius curb tip-down; brick curb ramp; ramp flares max 8.3%



2 BITUMINOUS DRIVEWAY APRON DETAIL
C401 NOT TO SCALE



Maintain max. cross-slope across driveway for min. 4.5' - 5' of width; likely no need to ramp down entire width of sidewalk