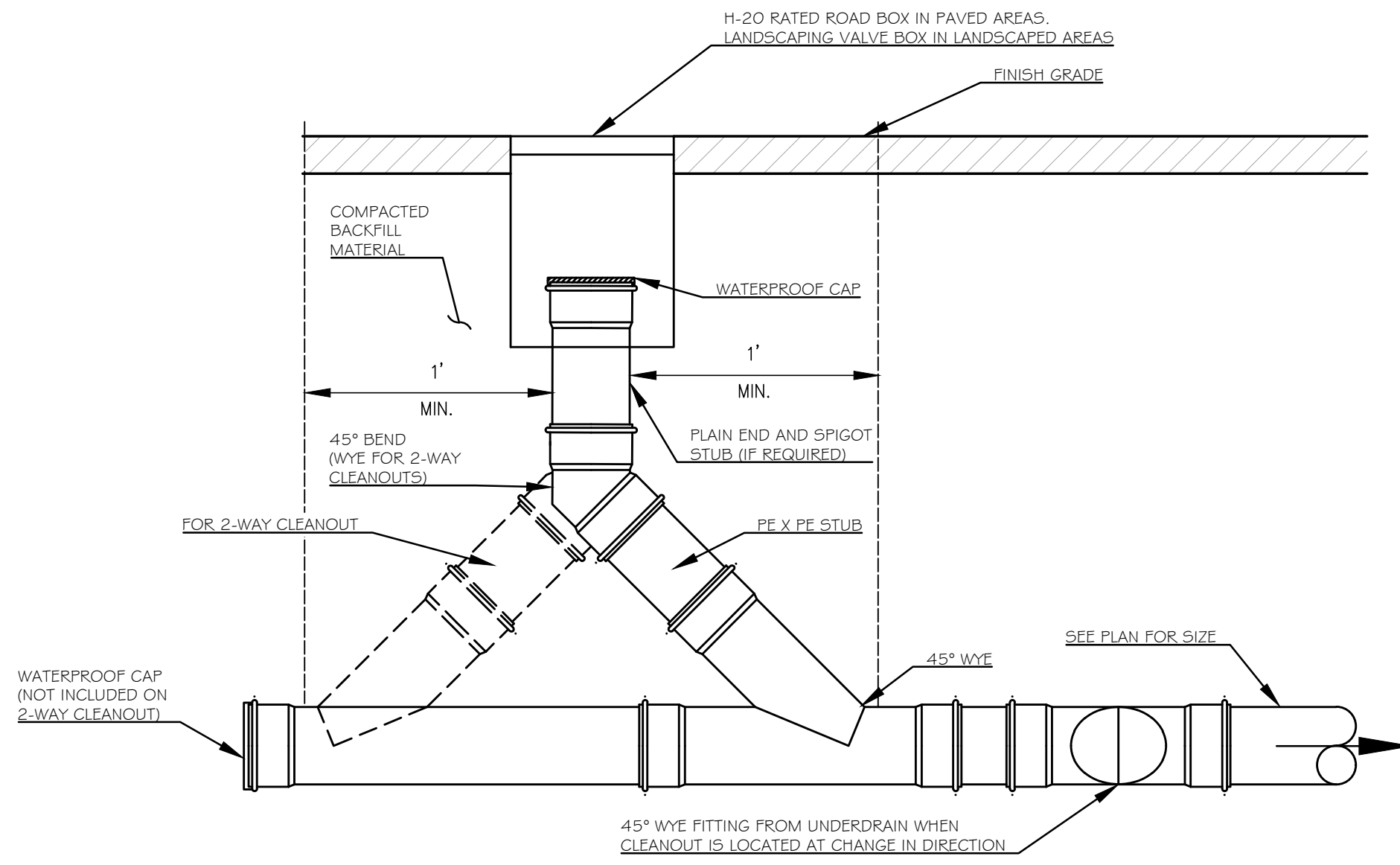
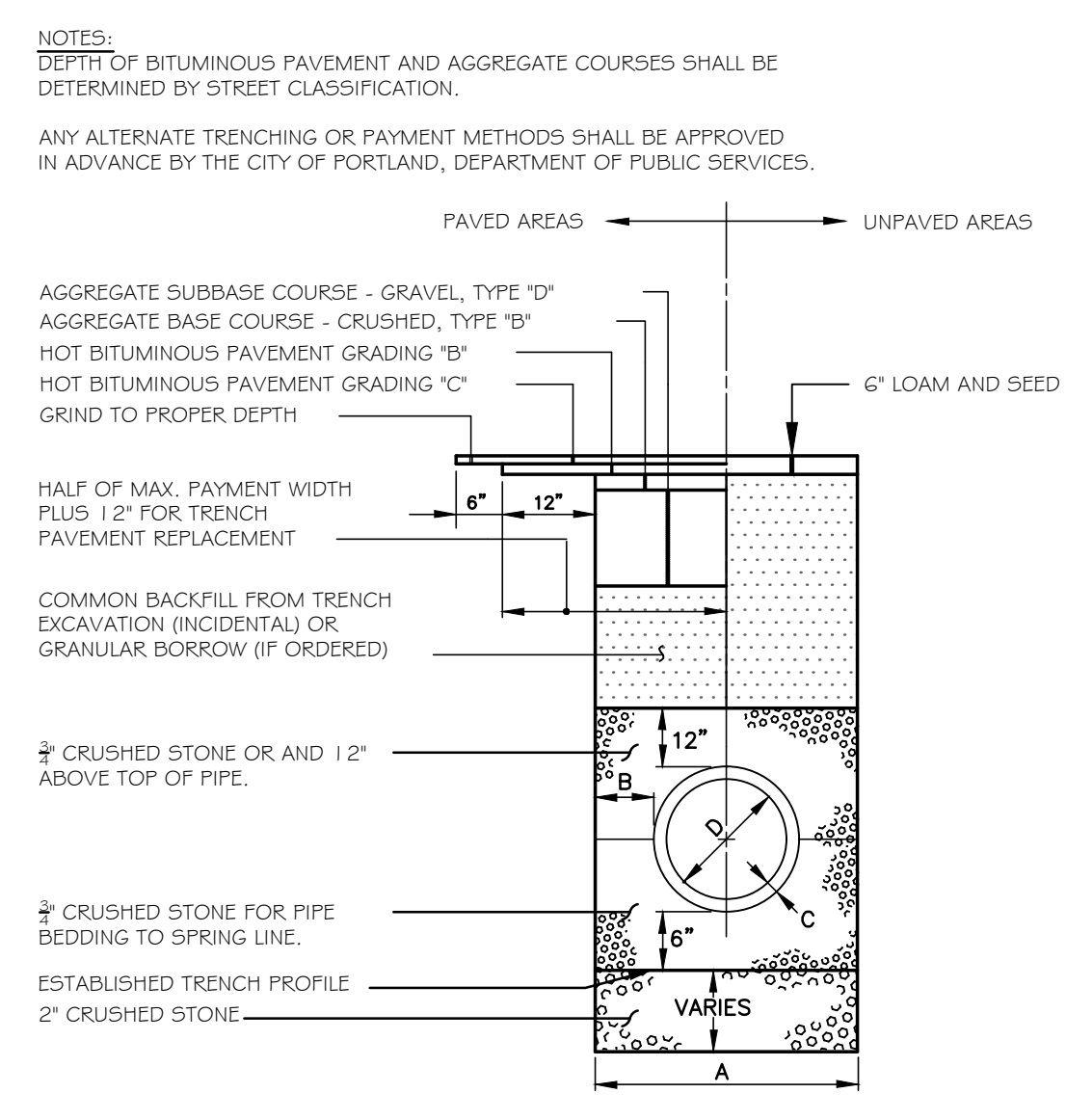


1 VALVE AND VALVE BOX INSTALLATION DETAIL
C402 NOT TO SCALE

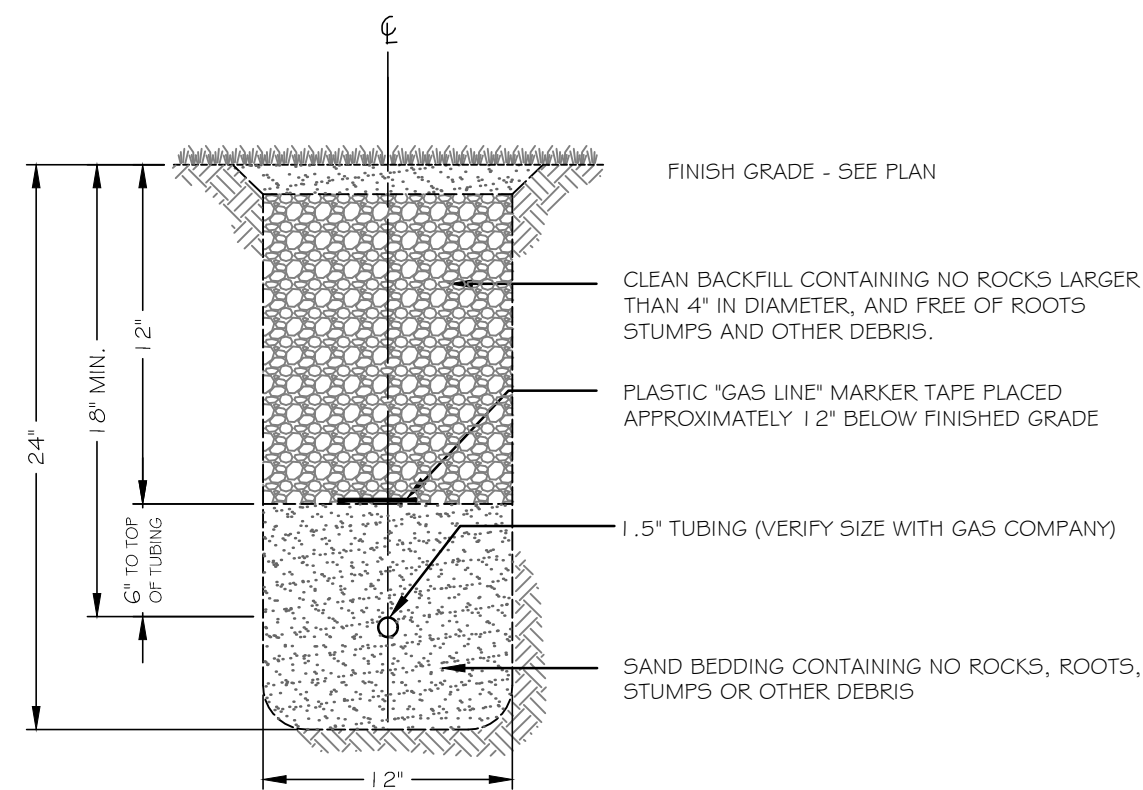


2 SEWER/STORM DRAIN CLEANOUT
C402 NOT TO SCALE

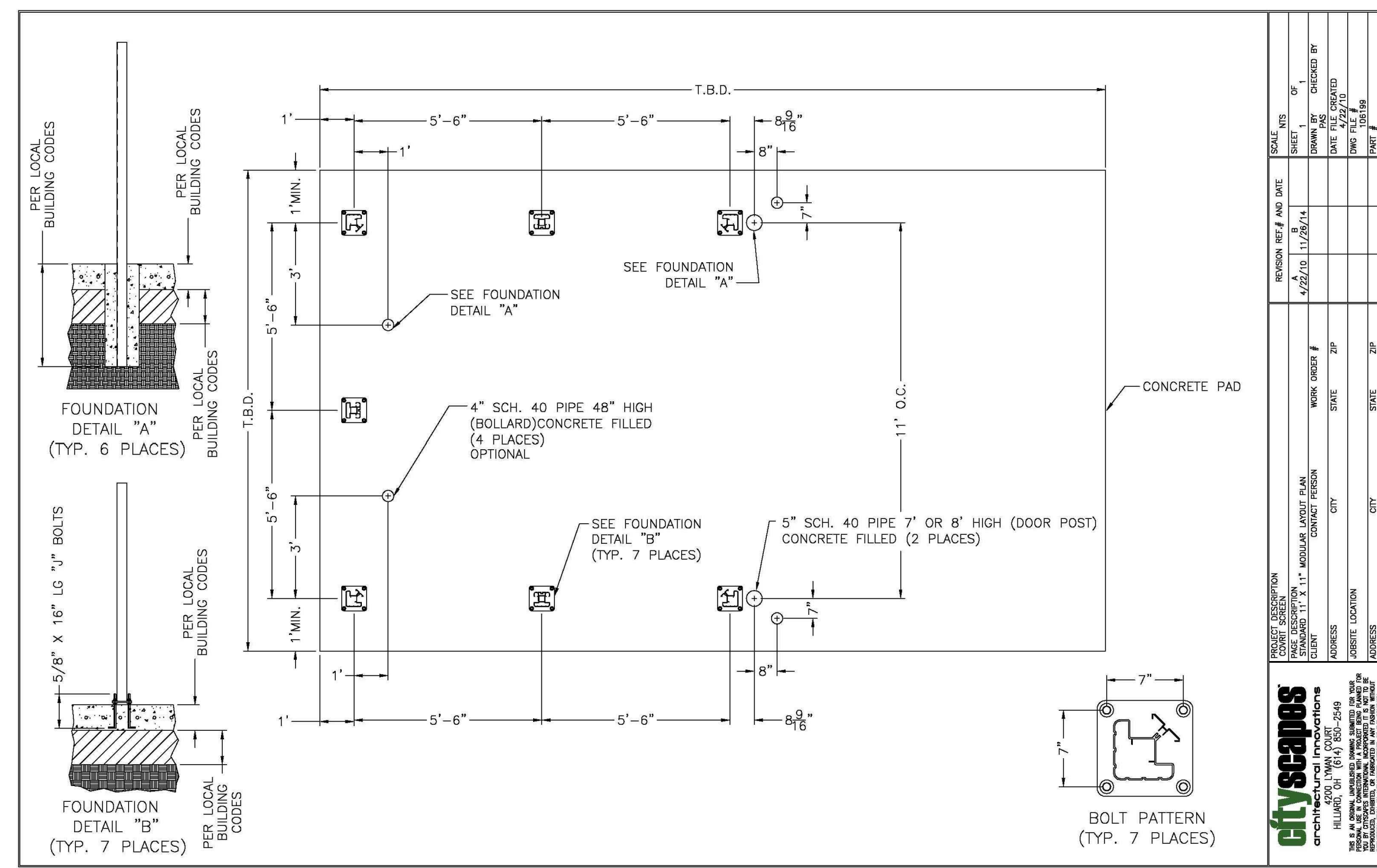


3 TYPICAL PIPE TRENCH & ROAD REPAIR DETAIL
C402 NOT TO SCALE

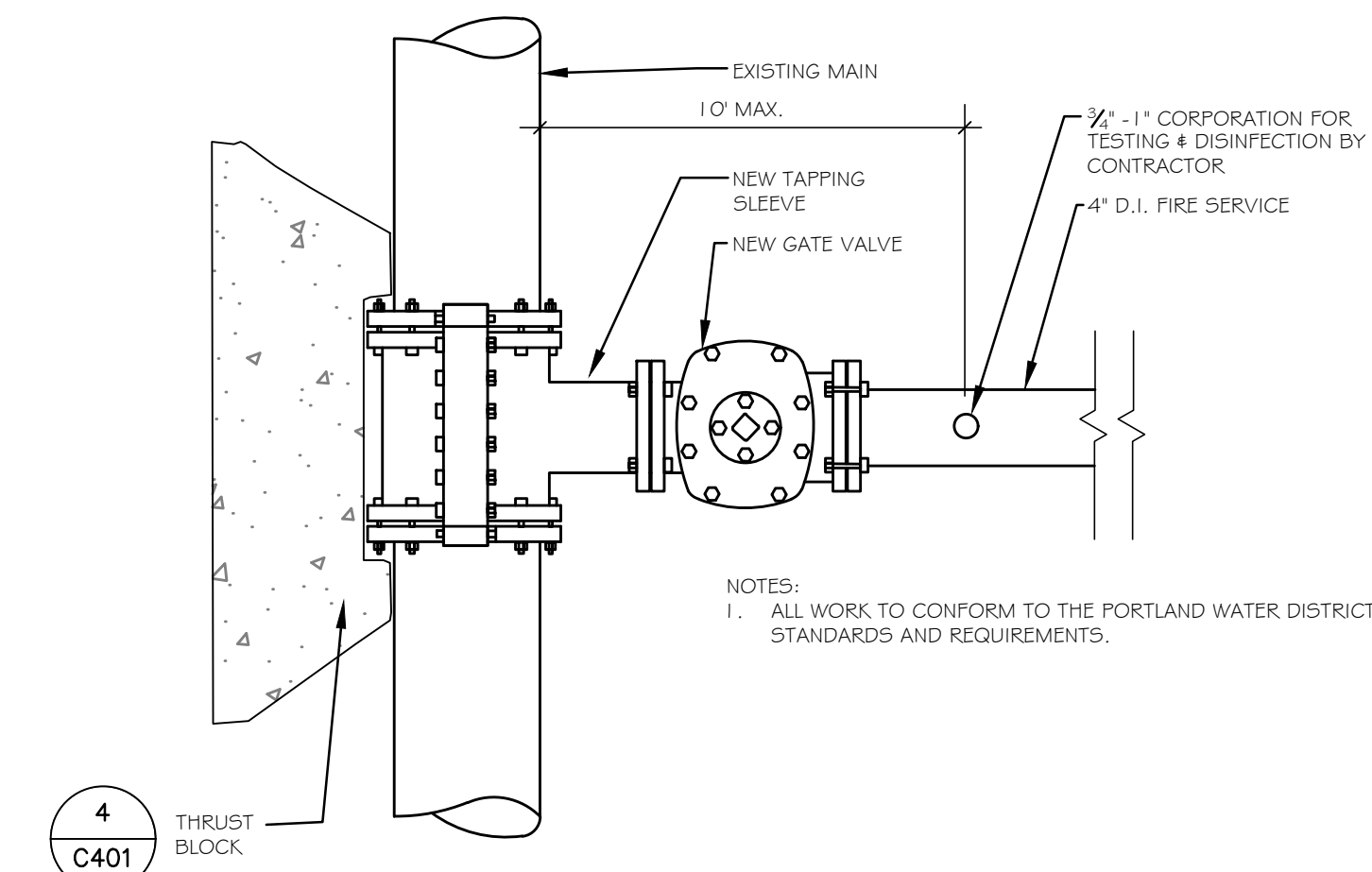
DRAFT - 1/31/17
NOT FOR CONSTRUCTION



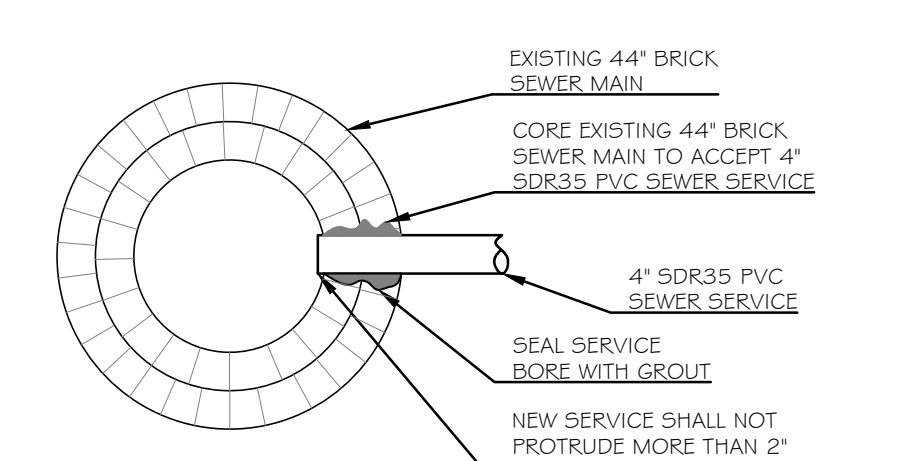
4 GAS LINE TRENCH SECTION
C402 NOT TO SCALE



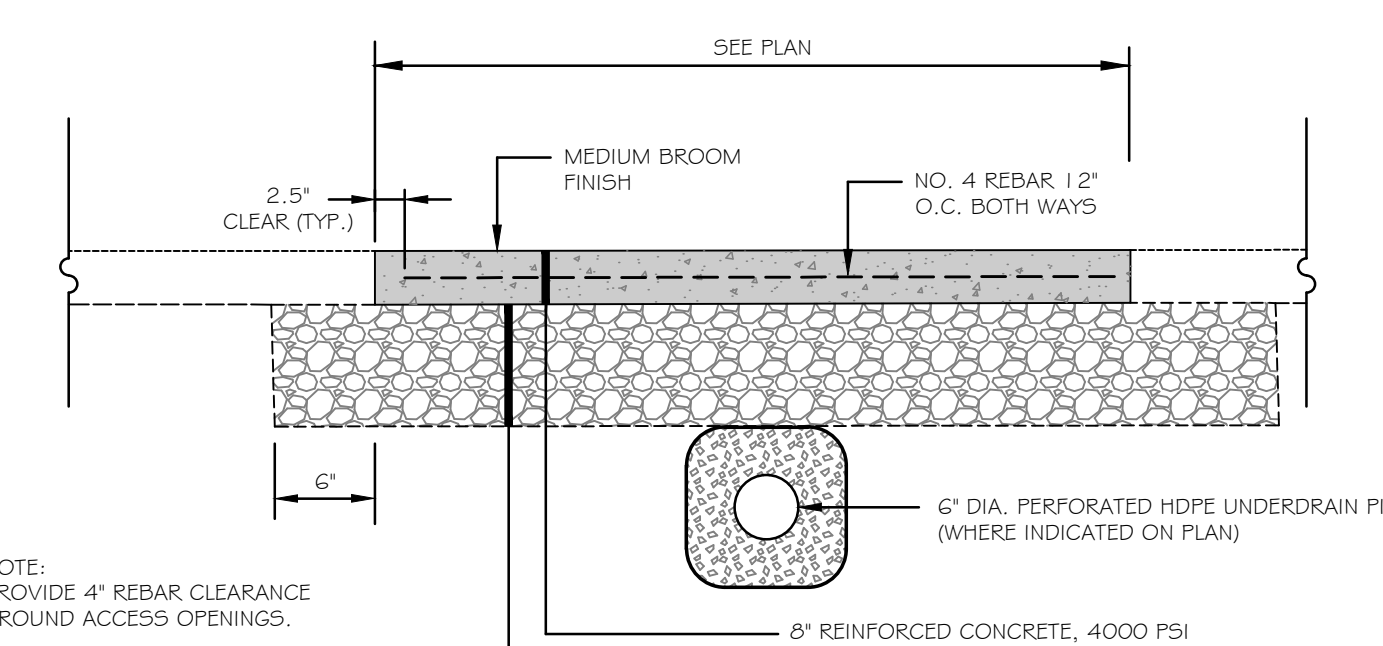
5 DUMPSTER ENCLOSURE DETAIL
C402 NOT TO SCALE



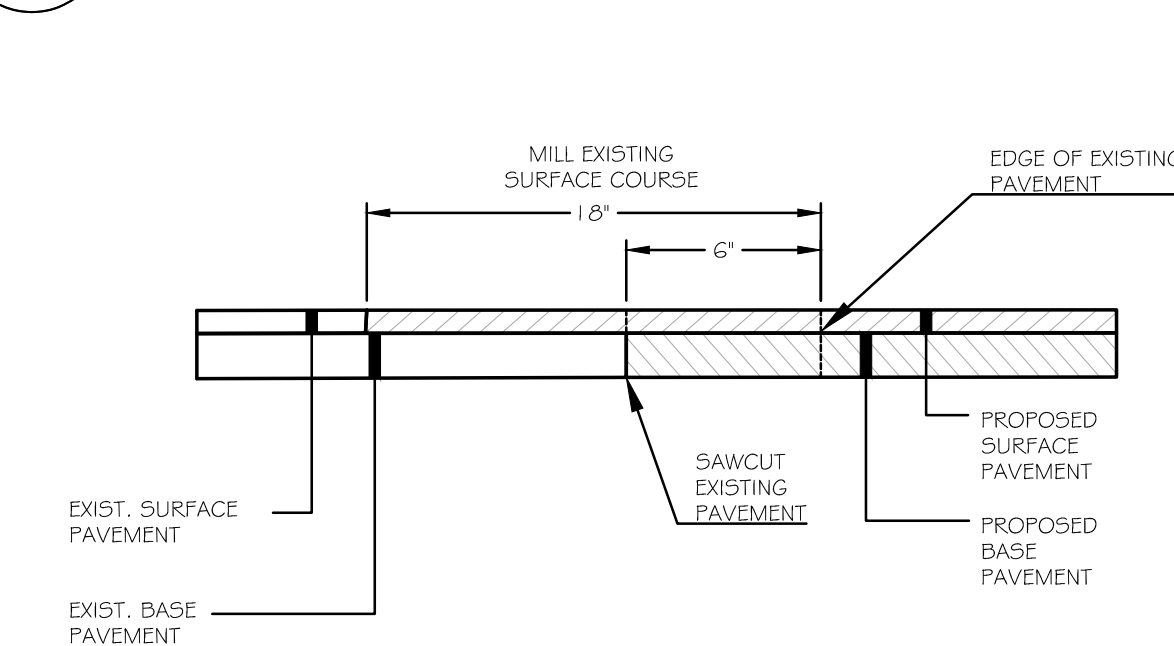
6 STANDARD TAPPING SLEEVE DETAIL (ALTERNATE #1)
C402



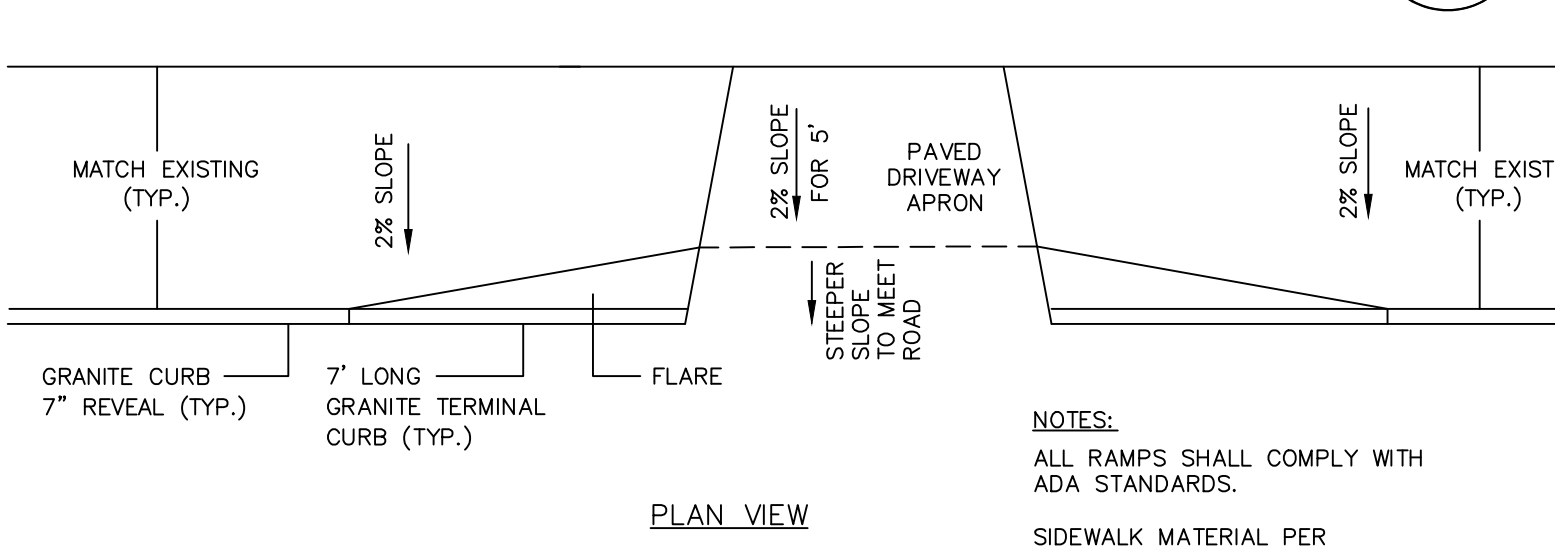
7 SEWER CONNECTION DETAIL
C402 NOT TO SCALE



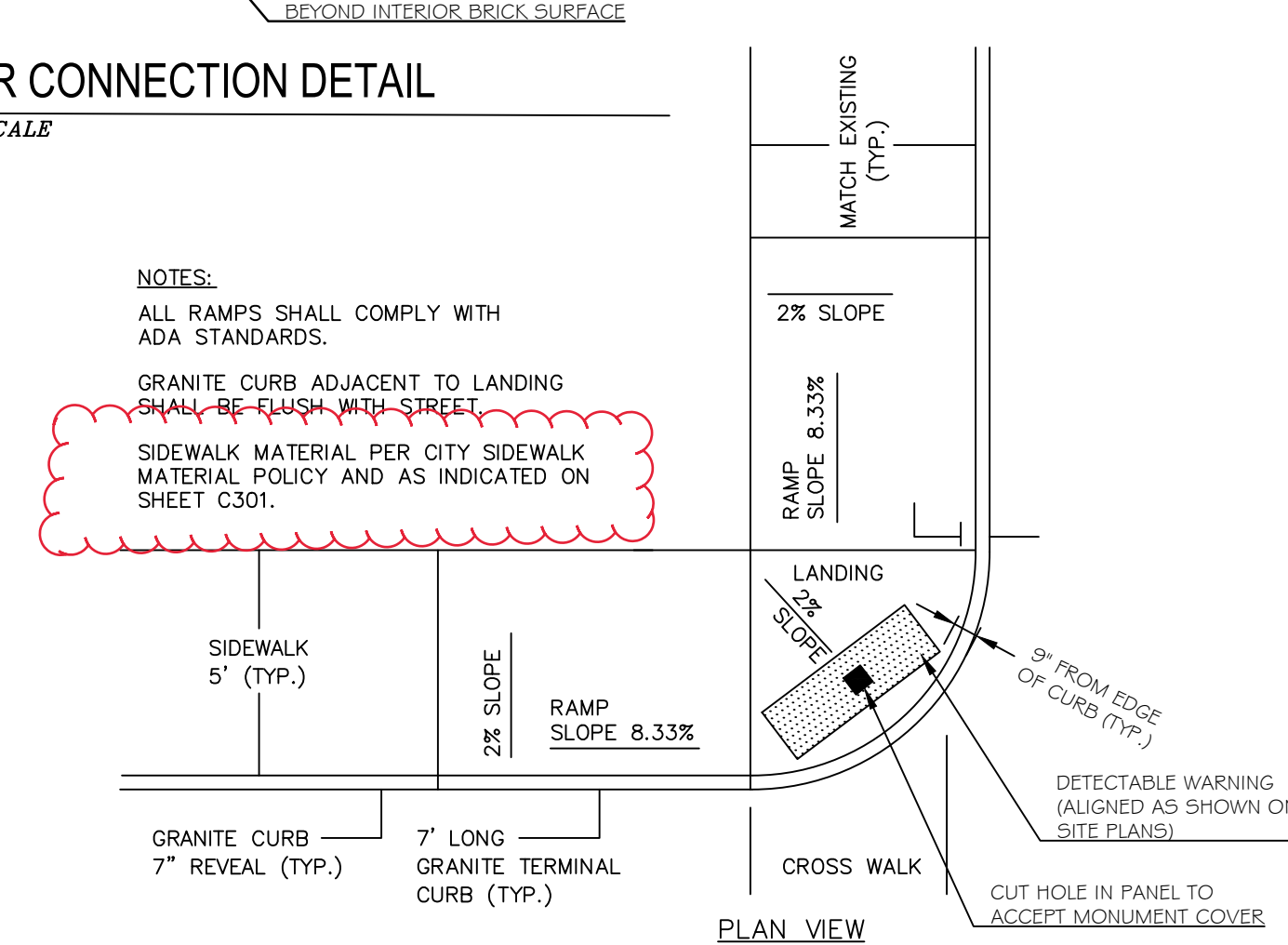
8 CONCRETE PAD
C402 NOT TO SCALE



9 HMA PAVEMENT BUTT JOINT DETAIL
C402 NOT TO SCALE



10 CURB RAMP DETAIL AT DRIVEWAY APRON
C402 NOT TO SCALE



11 CURB RAMP DETAIL AT CROSSWALK
C402 NOT TO SCALE

Bild Architecture
PO Box 8235
Portland, ME
04104
207.408.0168
evan@bildarchitecture.com

WALSH
ENGINEERING ARCHITECTURE, INC.
One Pine Street, Suite 200
Portland, ME 04101
Tel: 207.653.8988 | www.walsh-inc.com
Copyright © 2018

CONSTRUCTION DOCUMENTS

PROJECT NO.
15031

PROJECT NAME
SALVATION ARMY
PORTLAND, MAINE

ISSUE DATE
10/25/16

SHEET SCALE
N.T.S.

DRAWN BY
SWC

SHEET TITLE
Site Details

402