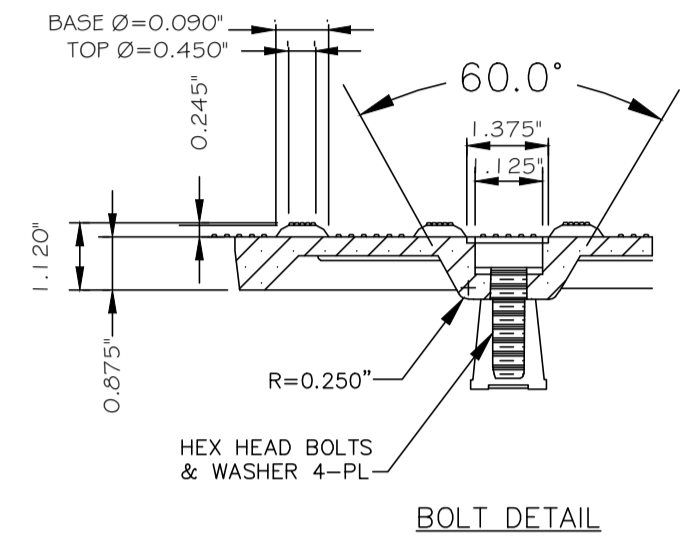
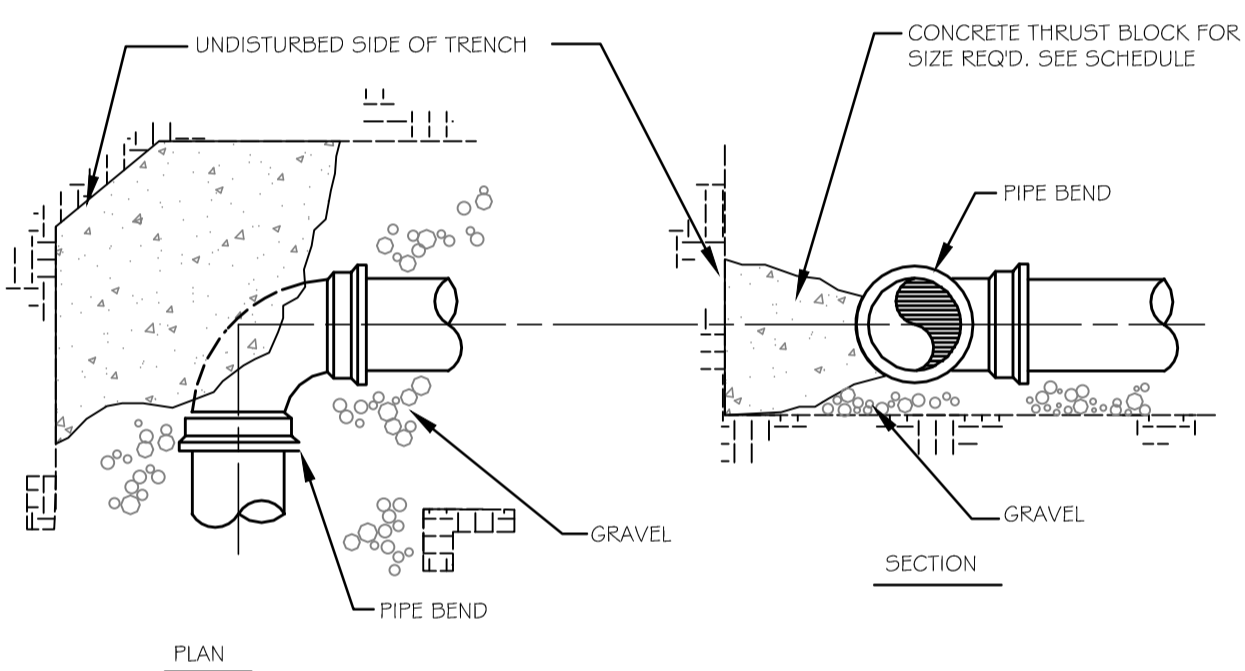
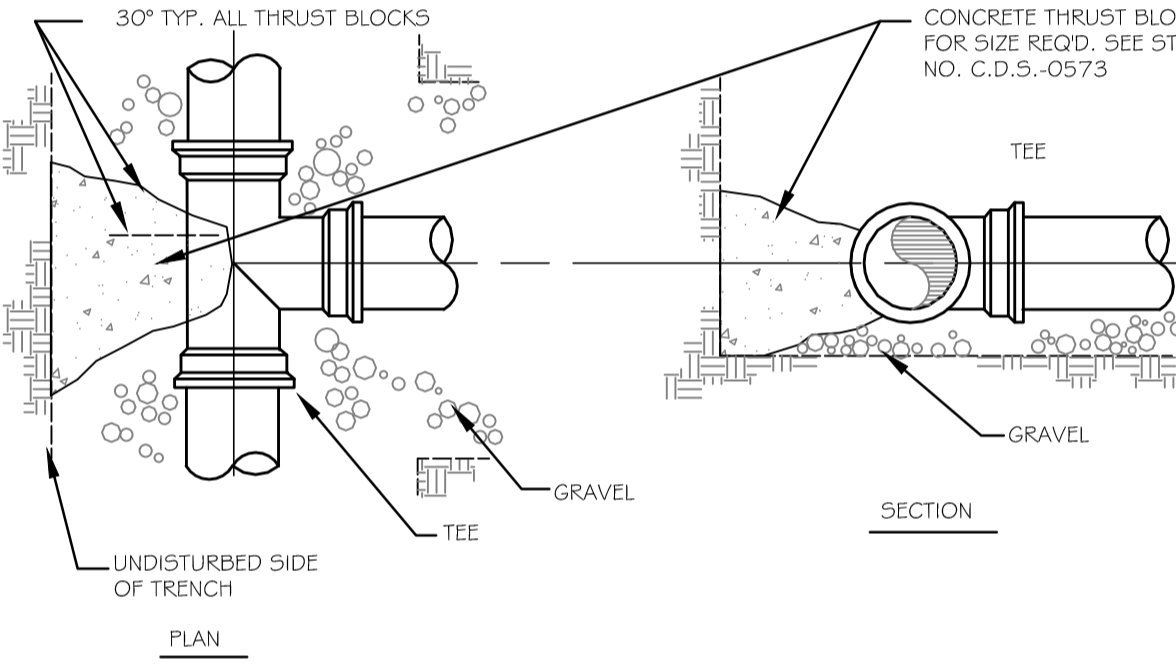


- NOTES:**
1. COMPOSITE WET SET (REPLACEABLE) DETECTABLE WARNING PANELS SHALL BE AS MANUFACTURED BY ADA SOLUTIONS, INC. (WWW.ADATILE.COM), OR APPROVED EQUAL.
  2. CAST IN PLACE CONCRETE SHALL MEET SPECIFICATIONS FOR MAINE D.O.T. CLASS A STRUCTURAL CONCRETE. MINIMUM COMPRESSIVE STRENGTH 4,000 PSI. THE CONCRETE SHALL BE SEALED PRIOR TO SETTING PANELS. THE EXPOSED CONCRETE BORDER SHALL RECEIVE A GROOVED EDGE BETWEEN THE PANEL AND CONCRETE, ALONG WITH A UNIFORM BROOM FINISH PERPENDICULAR TO THE FLOW OF PEDESTRIAN TRAFFIC.
  3. TRUNCATED DOMES SHALL BE ALIGNED IN ROWS, PARALLEL AND PERPENDICULAR TO THE PREDOMINANT DIRECTION OF TRAVEL. TRUNCATED DOME BRICKS AND GRANITE PAVERS ARE NOT ALLOWED.
  4. FOR ALL DETECTABLE WARNING PANELS (EXCEPT AS SPECIFIED IN FIGURE 1-7A AND TECHNICAL MANUAL SECTION 1.8.4), FEDERAL YELLOW COLORED (#33538) PANELS SHALL BE USED. FOLLOW MANUFACTURER'S INSTRUCTIONS FOR INSTALLATION.
  5. SIZE: THE DETECTABLE WARNING PANEL(S) SHALL EXTEND 24 INCHES MINIMUM IN THE DIRECTION OF TRAVEL AND THE FULL WIDTH OF THE CURB RAMP, LANDING, OR BLENDED TRANSITION TO THE STREET.
  6. ORIENTATION: THE DETECTABLE WARNING PANEL SHALL BE LOCATED SO THAT THE EDGE NEAREST THE CURB LINE IS 6 INCHES MINIMUM AND 8 INCHES MAXIMUM FROM THE CURB LINE. THE PANEL SHALL BE ORIENTED TO THE DIRECTION OF TRAVEL AS IDENTIFIED BY THE POINT OF EGRESS.



**1** SIDEWALK RAMP DETECTABLE WARNING PANEL  
C401 NOT TO SCALE

**2** BITUMINOUS DRIVEWAY APRON DETAIL  
C401 NOT TO SCALE



SIZE REQUIREMENTS FOR CONCRETE THRUST BLOCKS

BEARING ON UNDISTURBED SOIL (SQUARE FT.)

FITTINGS	90° BENDS	45° BENDS	TEES & PLUGS	HYDRANTS
PIPE SIZE				
4"	2.0	1.0	1.0	NA
6"	3.0	2.0	2.0	6.0
8"	5.0	3.0	4.0	NA

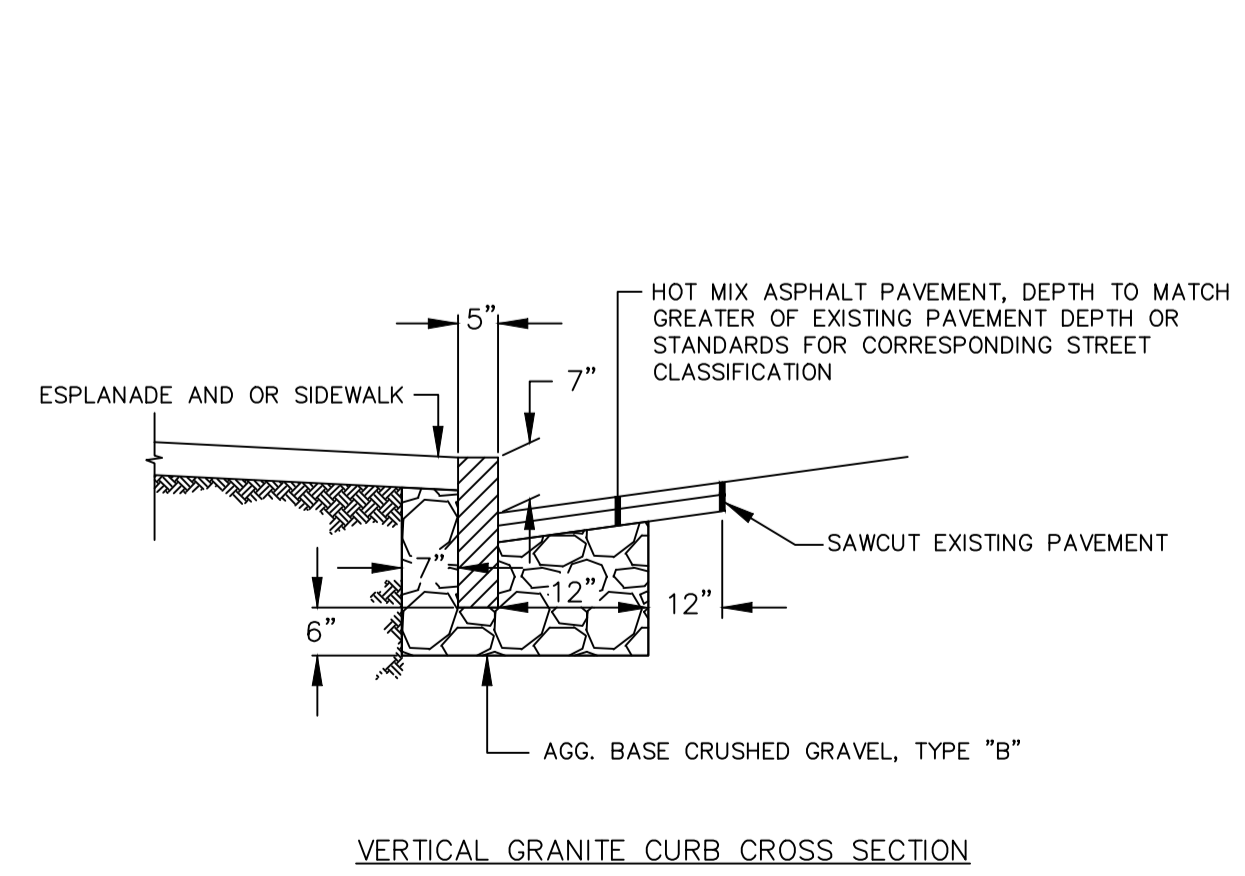
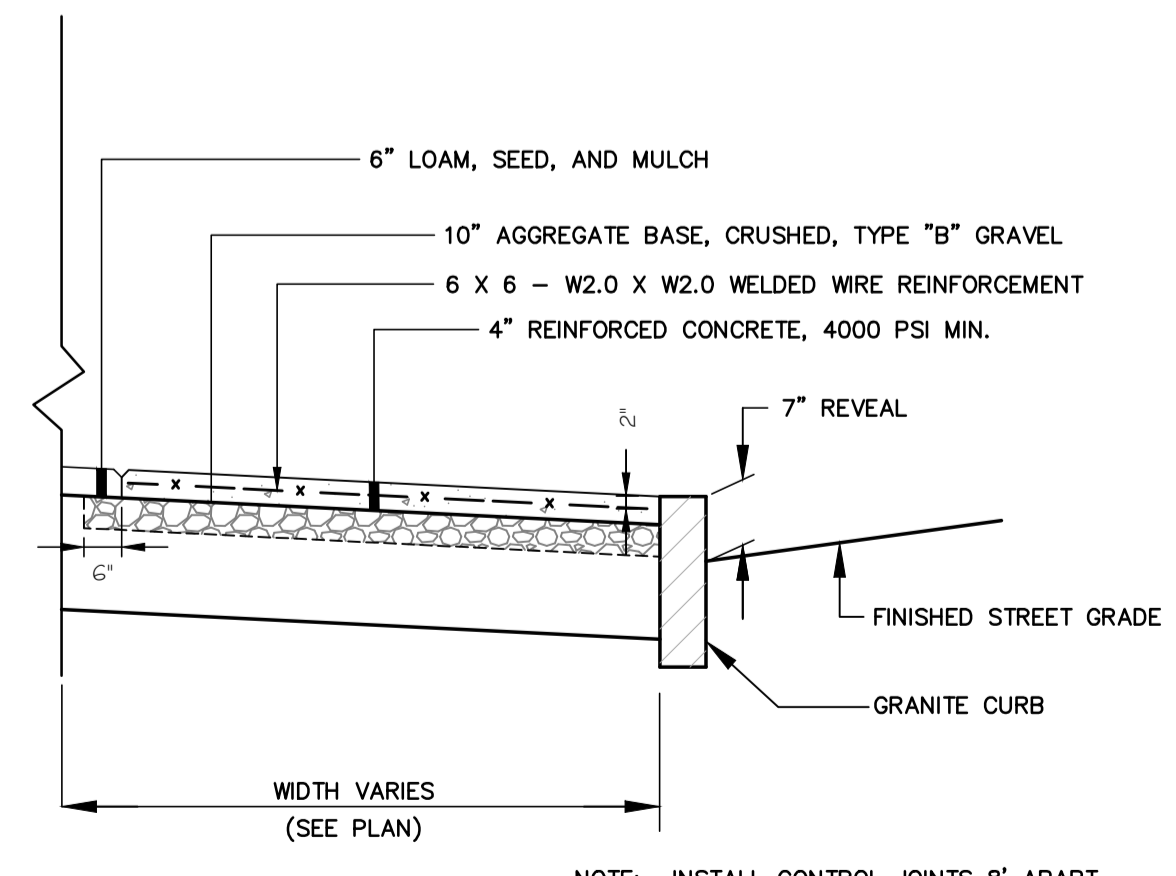
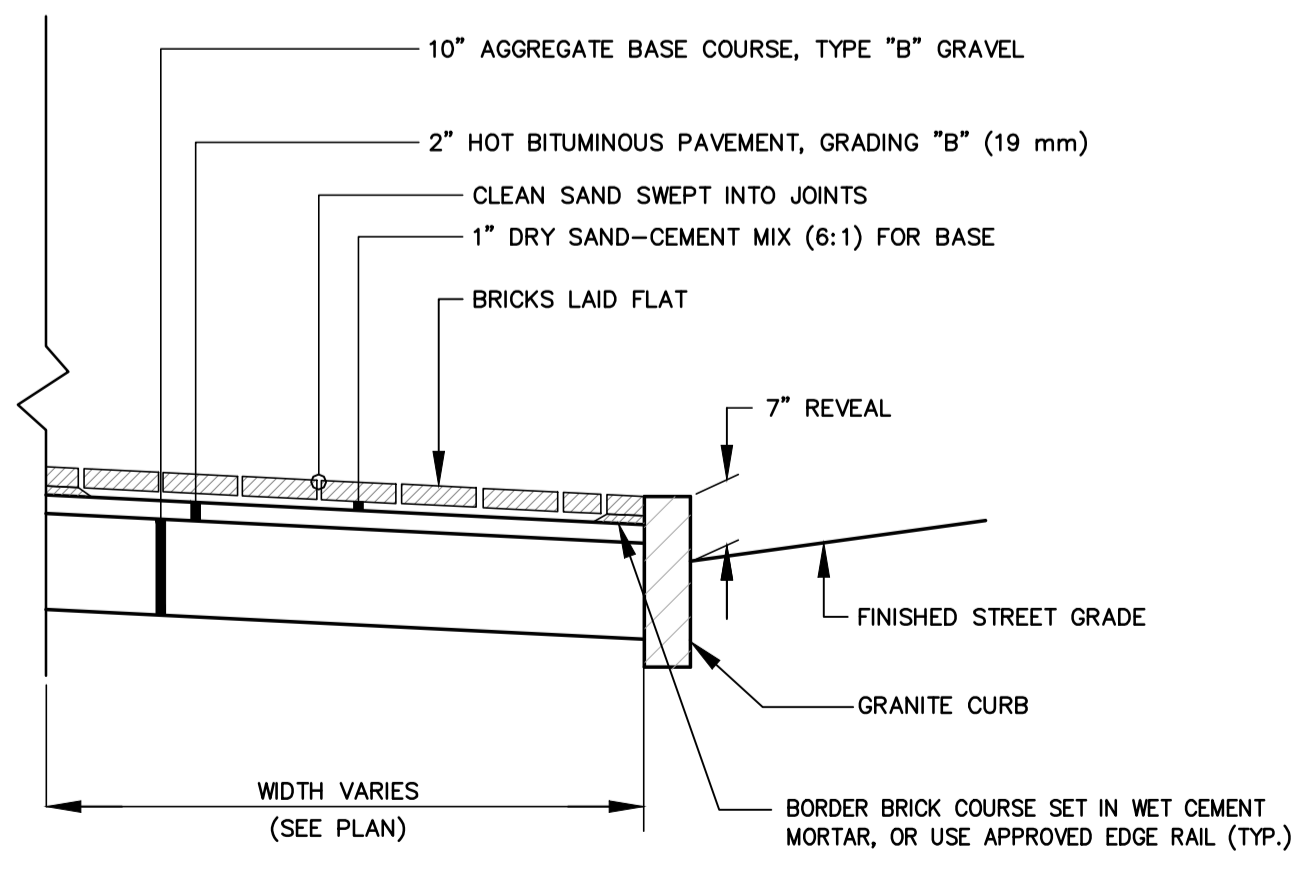
**4** THRUST BLOCK DETAILS  
C401 NOT TO SCALE

**THRUST BLOCK SCHEDULE**

BRICKS TO BE USED:

**NEW CONSTRUCTION: (LANCASTER)**  
4"x8" PINE HALL PATHWAY PAVER BRICK; MFG. BY PINE HALL BRICK CO., MADISON, NORTH CAROLINA. LACHANCE ITEM # 193623. PINE HALL PATHWAY PAVER BRICK.

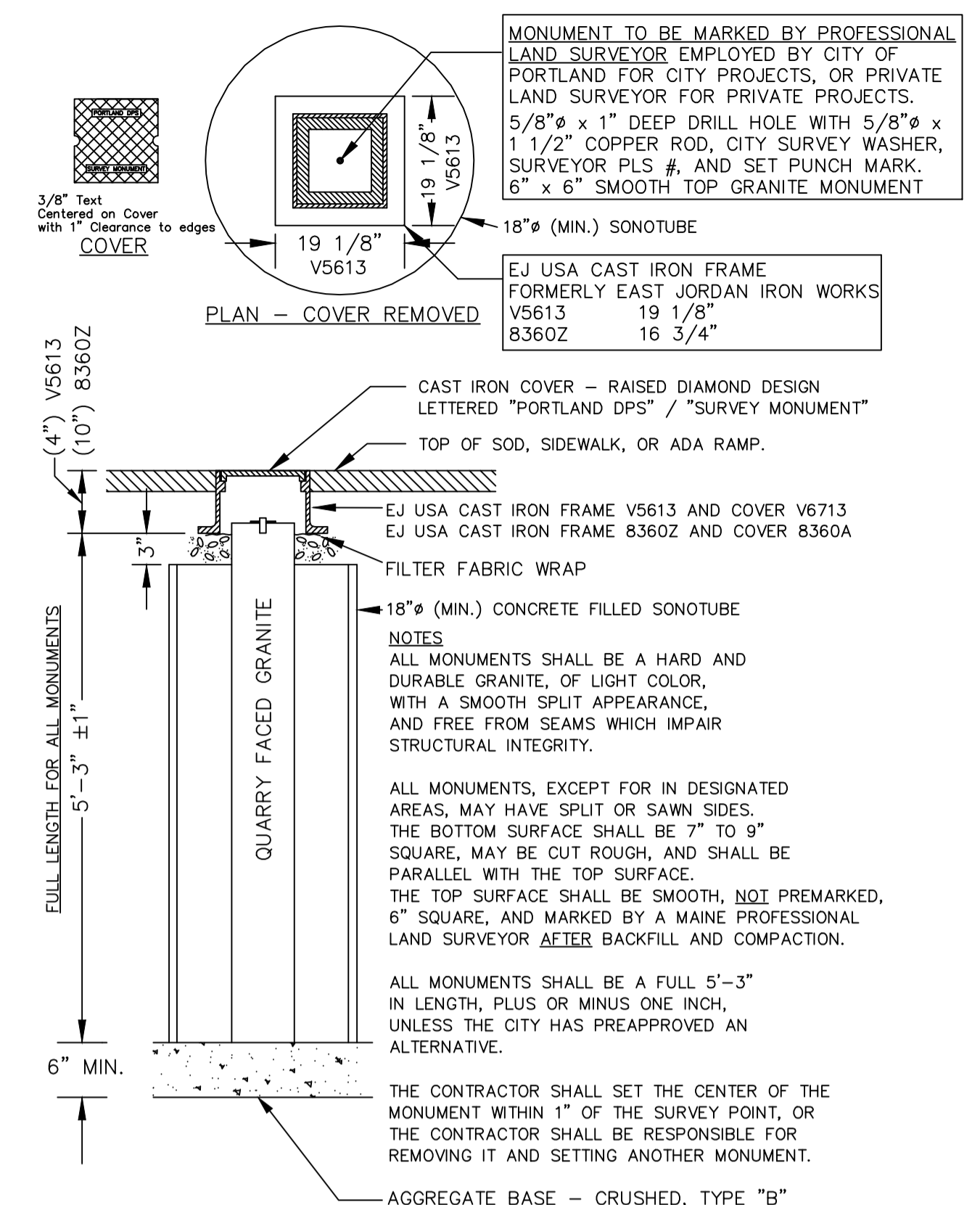
**REPAIR / MAINTENANCE TO EXISTING BRICK SIDEWALKS: (PREBLE)**  
VERMONT PAVER; SUPPLIED BY GAGNE AND SONS. SPECIFICATION NUMBER: VERMONT BACKER BRICK; ITEM NUMBER # VBBB



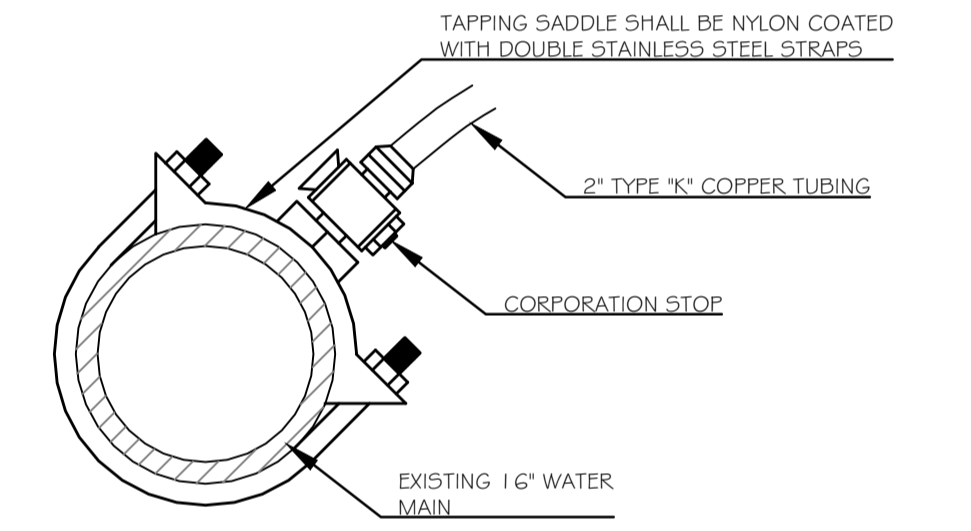
**6** BRICK SIDEWALK WITH BITUMINOUS BASE  
C401 NOT TO SCALE

**7** REINFORCED CONCRETE SIDEWALK  
C401 NOT TO SCALE

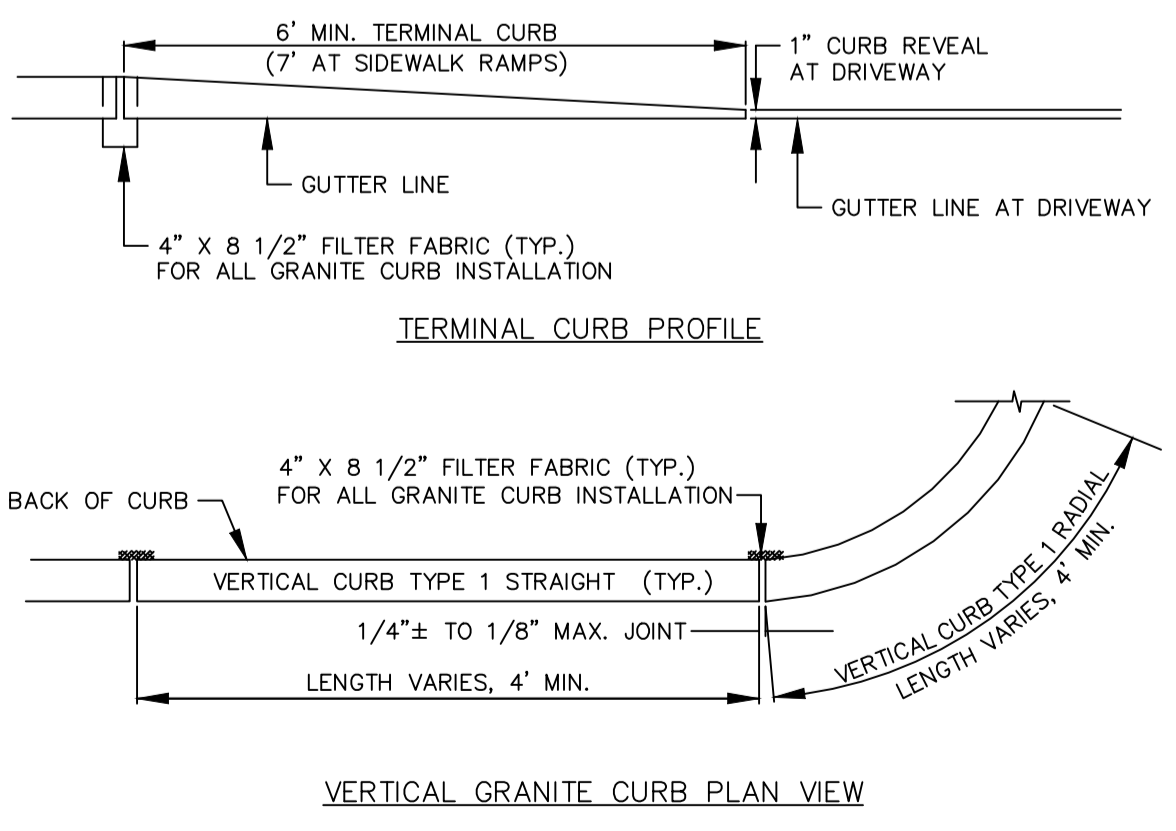
**8** GRANITE CURB INSTALLATION IN EXISTING STREETS DETAIL  
C401 NOT TO SCALE



**3** GRANITE STREET MONUMENT  
C401 NOT TO SCALE



**5** STANDARD CORPORATION STOP DETAIL  
C401 NOT TO SCALE



**8** GRANITE CURB INSTALLATION IN EXISTING STREETS DETAIL  
C401 NOT TO SCALE

**Bild Architecture**  
PO Box 8235  
Portland, ME  
207.408.0168  
evan@bildarchitecture.com

**WALSH ARCHITECTURE**  
100 State St., Suite 201, Westbrook, Maine 04090  
One Island St., Suite 101, Portland, Maine 04101  
Tel: 207.553.9888 | www.walsh-arc.com  
Copyright © 2016

PROJECT NO. **15031**  
PROJECT NAME **SALVATION ARMY**  
PORTLAND, MAINE

REVISIONS

1	08/16/16	ISSUE
2	08/16/16	REVISIONS
3	08/16/16	REV. PER CITY COMMENTS
4		
5		

**DOCUMENTS NOT FOR CONSTRUCTION**

DRAWN BY **SWC**  
SHEET TITLE **Site Details**

ISSUE DATE **8/2/16**  
SHEET SCALE **N.T.S.**

**CITY OF PORTLAND APPROVED SITE PLAN**  
Subject to Conditions of Approval and Standard Conditions

**10-4-2016**  
Jean Fraser  
PLANNER

PROJECT NO. **#2016-016**